

FAIRINGS FIXED TO L.E. CANNON BLANKING CAP FROM SCRAP BLOCK.

1/4 DIA. HOLE IN FRONT LAMINATION Q.P.B. L.E. LAMINATED FROM 3 STRIPS OF 1/8 x 1 - TRIM TO SHAPE AFTER WING IS SHEETED

1/4 PLY COUPLER

PLY SPAR JOINER

1/4 x 1/2 SPARS TOP & BOTTOM

1/8 SHT

3/16 I.D. ALUM TUBE

1/16 I.D. ALUM TUBE MACHINE GUN.

ROUND ON TOP OF WIRE

ROUND ON BOTTOM SURFACE

GREEN LIGHT FROM SCRAP

LANDING GEAR

1/8 SHT. WALL

3/32 PLY SERVO PLATFORM

1/16 WIRE PUSH ROD

CANNON FAIRING BLISTER ON TOP SURFACE.

3/32 PLY

1/16 WIRE PUSH ROD

ENDS PLUG INTO RISER

HINGE PIN 3/32 WIRE

3/16 SHT GUSSET

TIP 3/4 SHT

HOOK FOR CONNECTION TO SERVO.

1/8 SHT. WALL

WHEEL WELL PAINT DARK GRAY ON UNDERSIDE

RADIATORS UNDER WINGS

HINGE PIN 3/32 WIRE

BLOT IN BOTTOM SHEET

3/32 I.D. BRASS TUBE

OUTER REAR SPAR.

3/32 I.D. BRASS TUBE IN AILERON.

WASHER

EXTENSION OF WING SHEET

REAR SPAR JOINER.

TREAD PLATE FINE EMERY CLOTH - RIGHT WING ONLY.

FLAPS - SCORE IN BOTTOM SHEET

3/16 SHT GUSSET

WASHER

1/8 SHT

AILERON SPAR 3/32 SHT. TAPER 1/16 TO 3/16

BRASS TUBE. FILL WITH SCRAP.

HINGE PIN

3/32 SHT T.E.

1/8 SHT.

3/32 SHT T.E.

AILERON BOTTOM PANEL 1/16 SHT. PULL OUTLINE

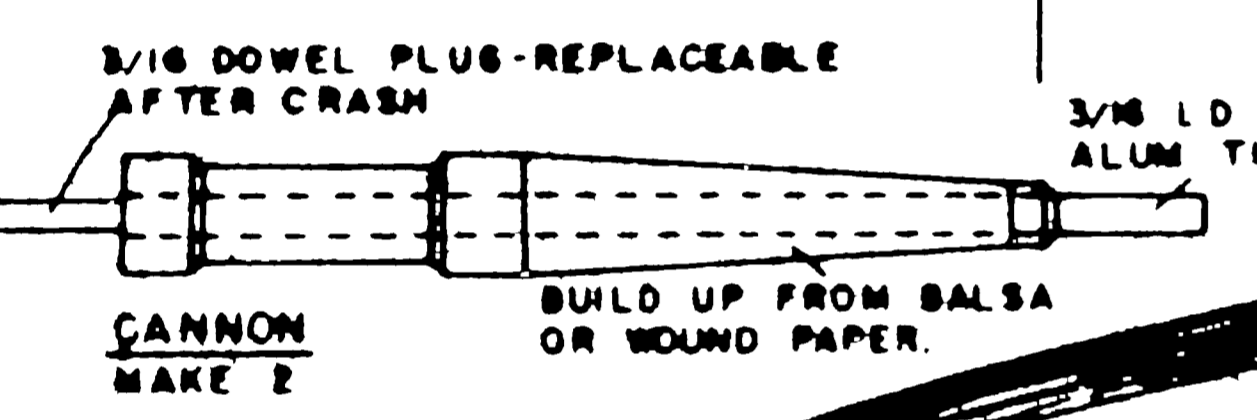
SCRAP BLOCK FILLER.

LAMINATED L.E.

1/16 HARD DURAL HORN

SHROUD BRASS TUBE.

HINGE PIN

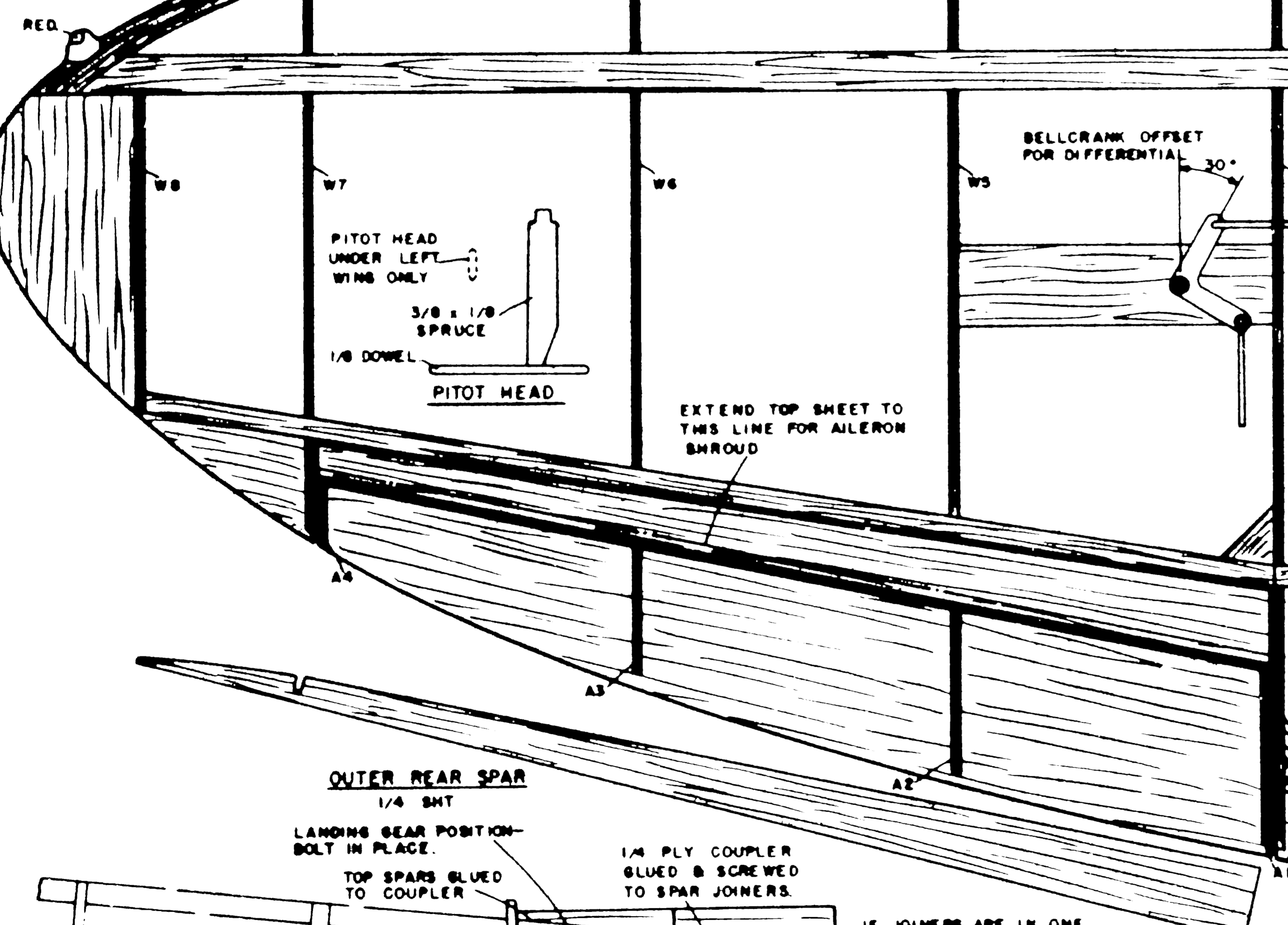


RIGHT WING (SHEETING OMITTED.)

YELLOW L.E. STRIPE 3/8 WIDE TOP & BOTTOM FROM HERE TO WING TIP LIGHT

BOTTOM SPARS STOP AT W1A USE SEPARATE PIECES IN CENTER SECTION.

W2 TYPICAL SECTION



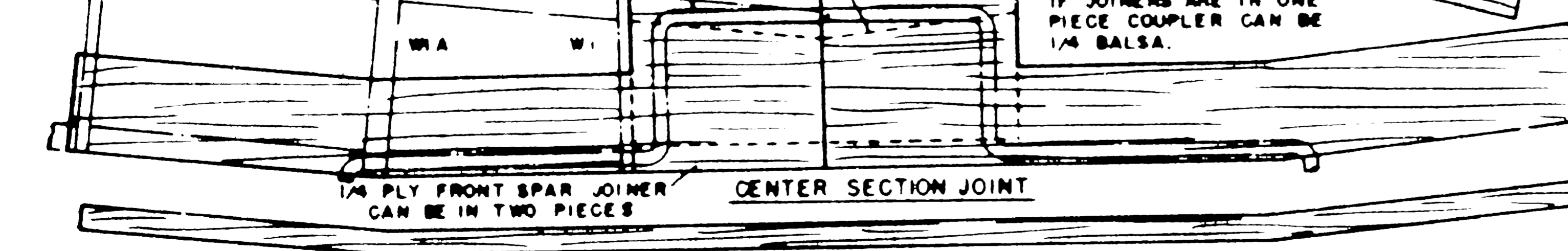
WINGS IDENTICAL EXCEPT AS NOTED BOTH WINGS COMPLETELY COVERED WITH 1/16 SHT

SECTION C-C

CANNON BLISTER SOFT 1/2 SHT

1/2 SHT SIDES

ALL RIBS 3/16 SHT. EXCEPT AS NOTED.



OUTER REAR SPAR 1/4 SHT

LANDING GEAR POSITION - BOLT IN PLACE.

TOP SPARS GLUED TO COUPLER

1/4 PLY COUPLER GLUED & SCREWED TO SPAR JOINERS.

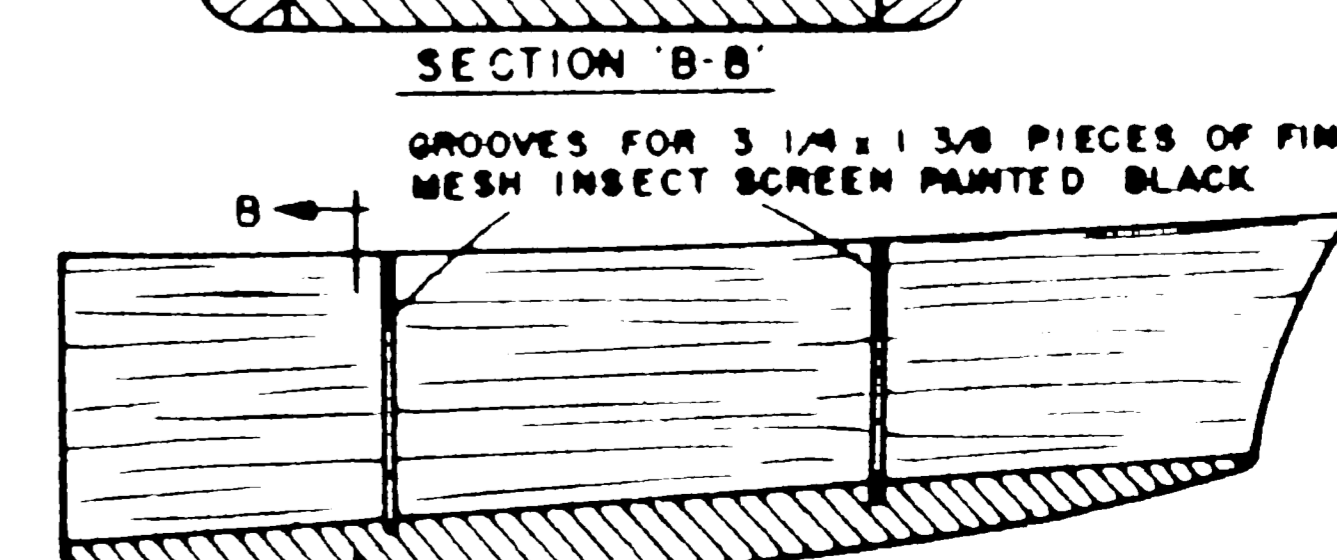
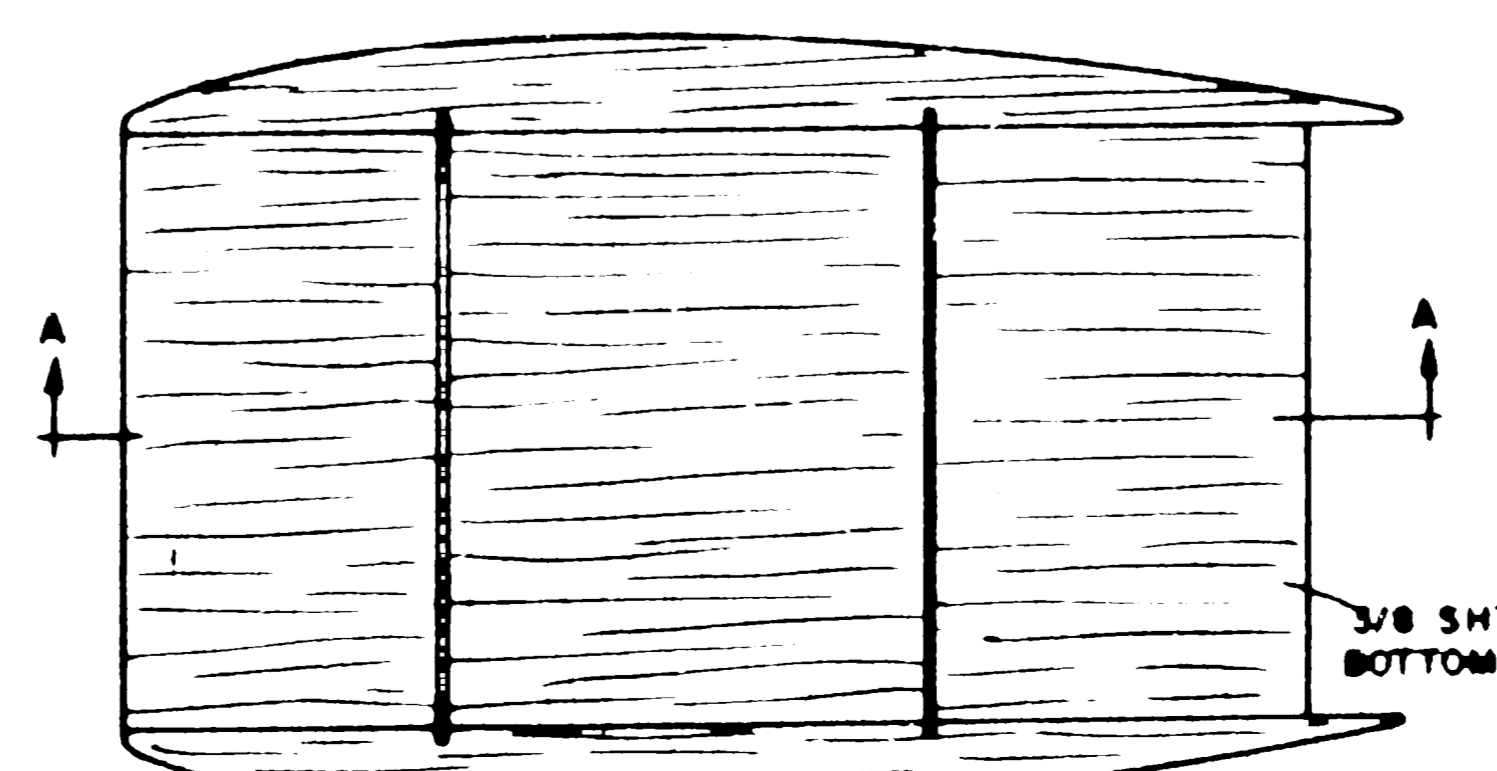
IF JOINERS ARE IN ONE PIECE COUPLER CAN BE 1/4 Balsa.

1/4 PLY FRONT SPAR JOINER CAN BE IN TWO PIECES

CENTER SECTION JOINT

REAR SPAR JOINER. MAKE 2 FROM 1/8 PLY

LEFT WING (SHEETING OMITTED)



WING RADIATOR MAKE 2

SPITFIRE IX SHEET 2

Designed by George Harris American Aircraft Modeler February 1962 Scanned and restored February, 2011 pd1