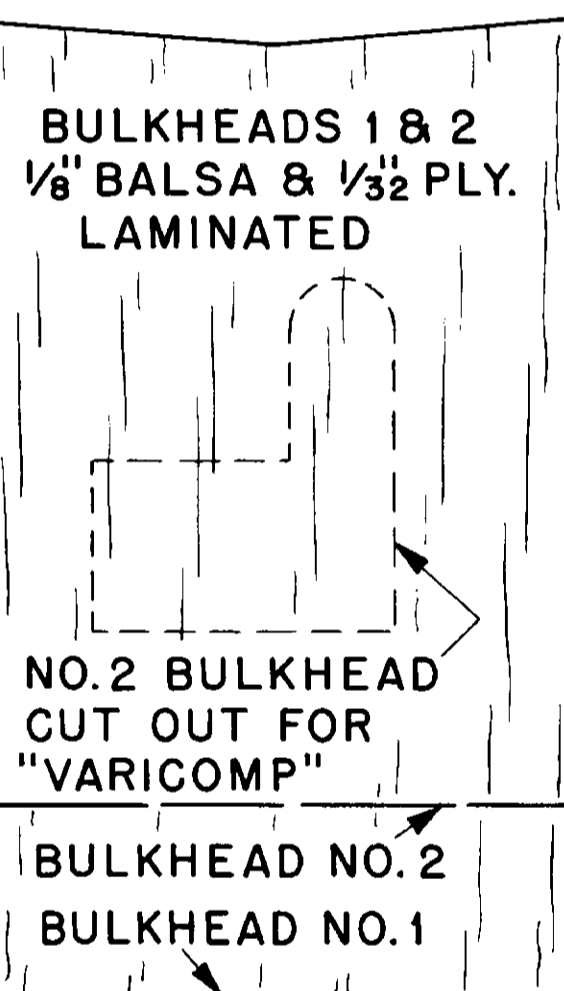
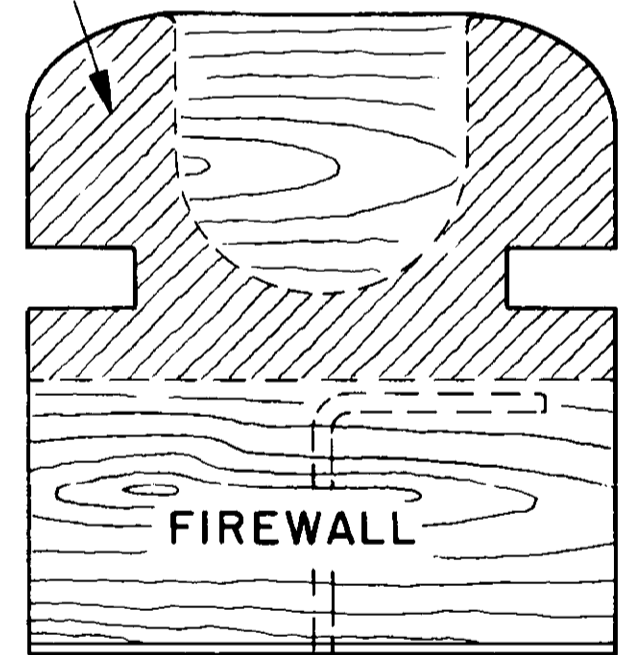


GENERAL NOTES

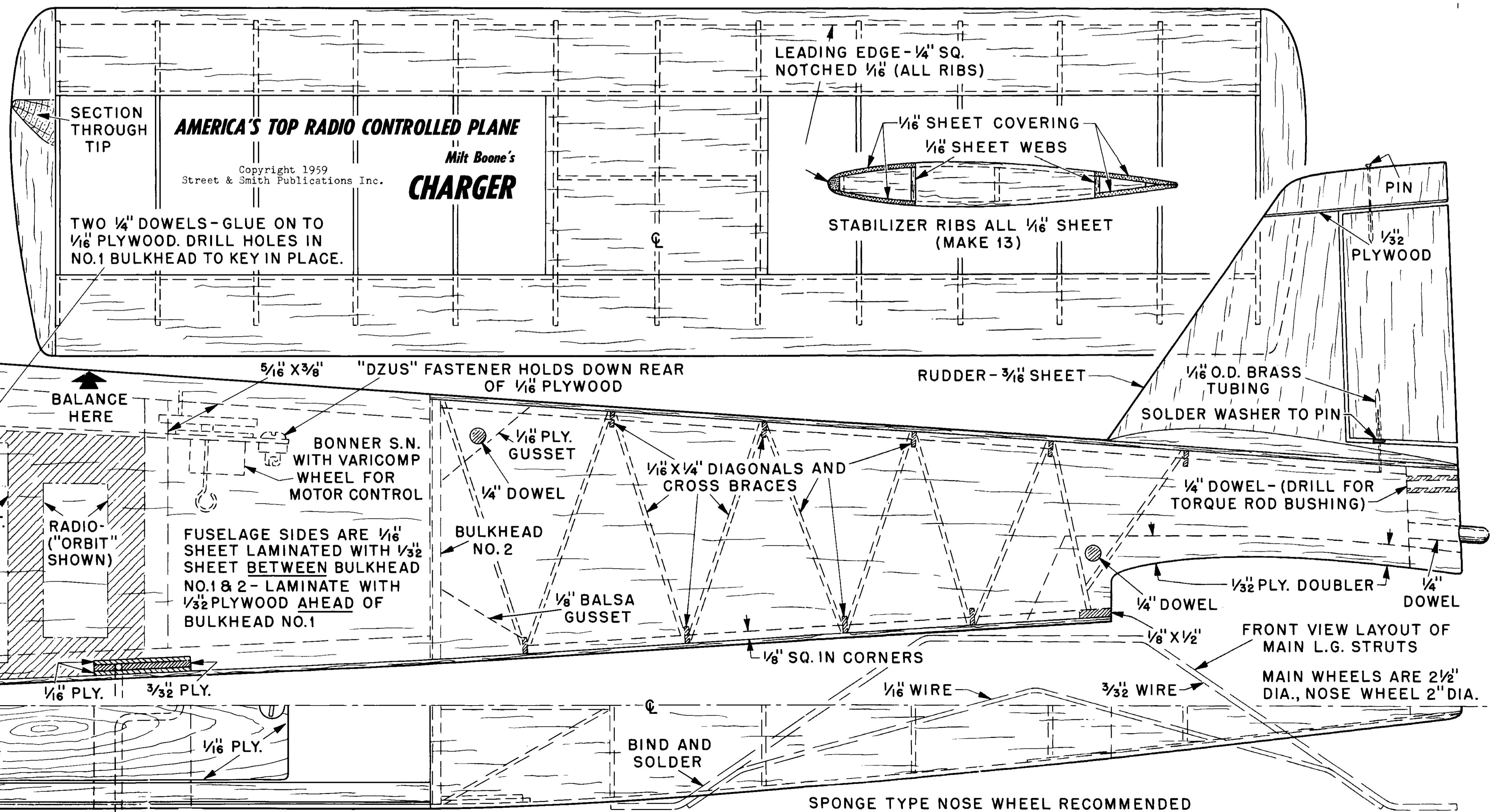
ENGINE MOUNTING PLATE IS $\frac{3}{32}$ " PLYWOOD OR MICARTA.

USE 2 WASHERS UNDER BACK OF ENGINE FOR DOWN-THRUST.

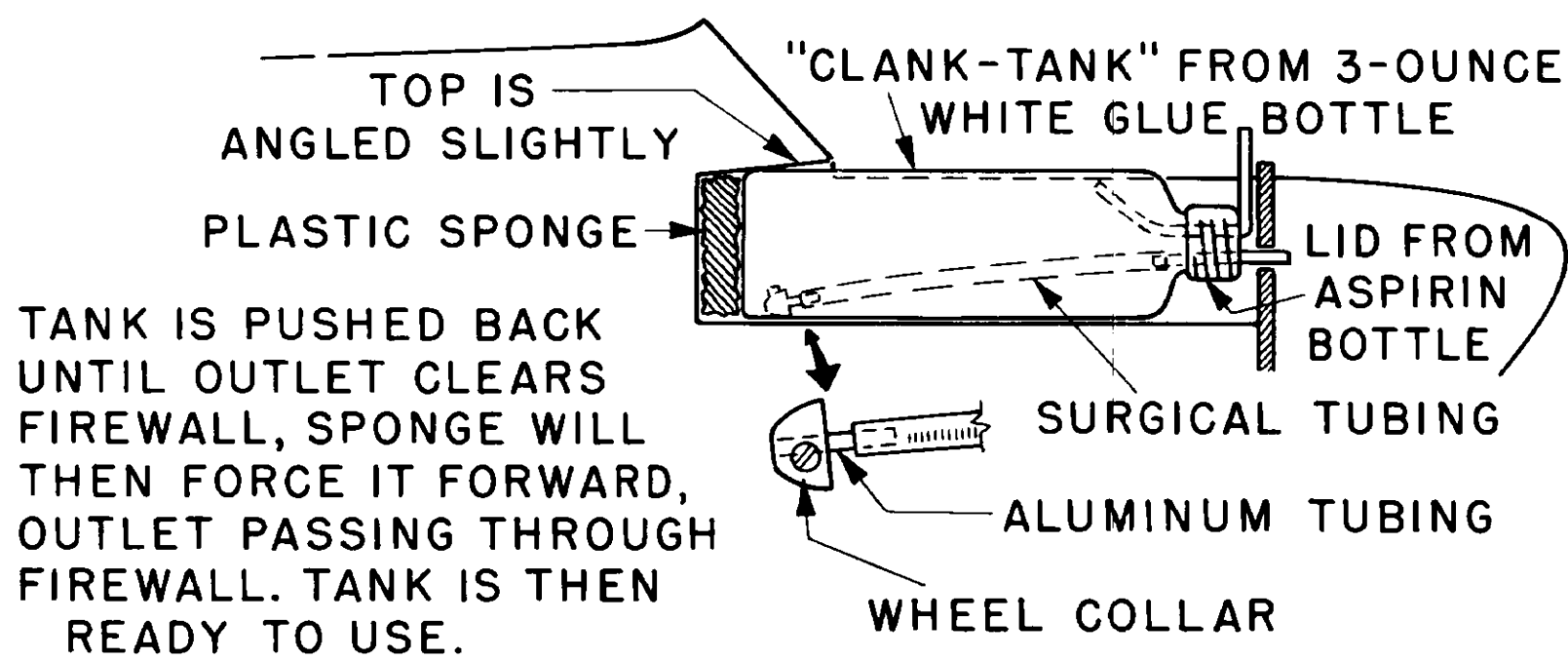
SHADED AREA INDICATES TANK BLOCK SHAPE.



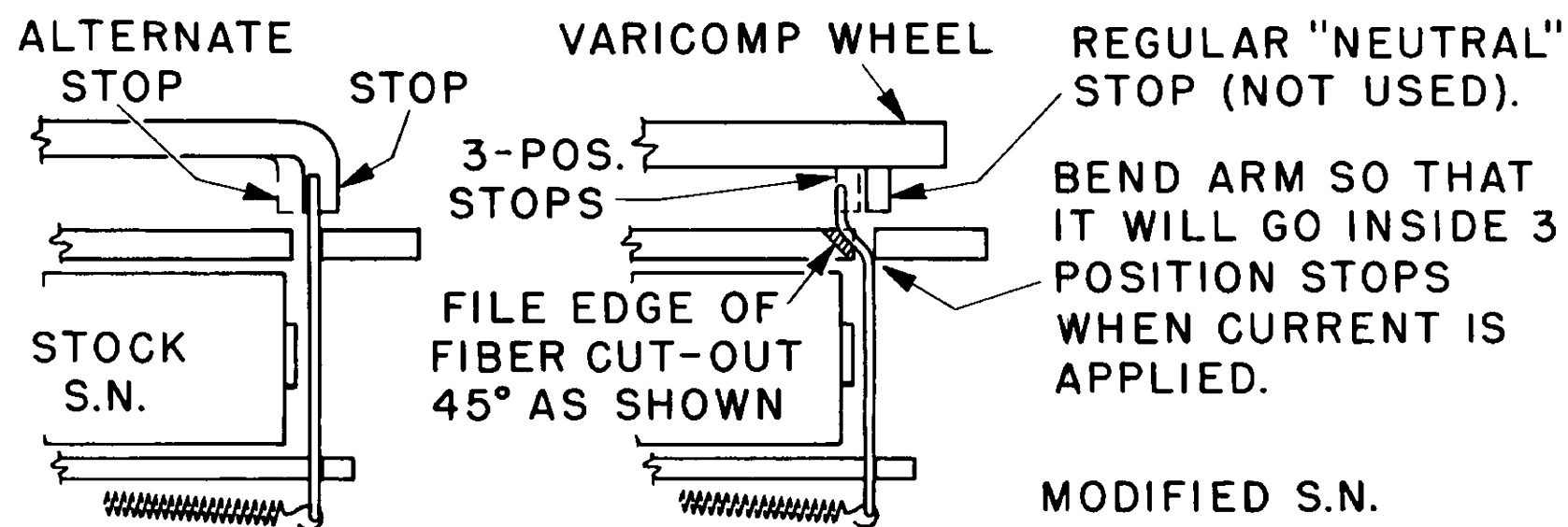
SPONGE AROUND RADIO AND BATTERIES



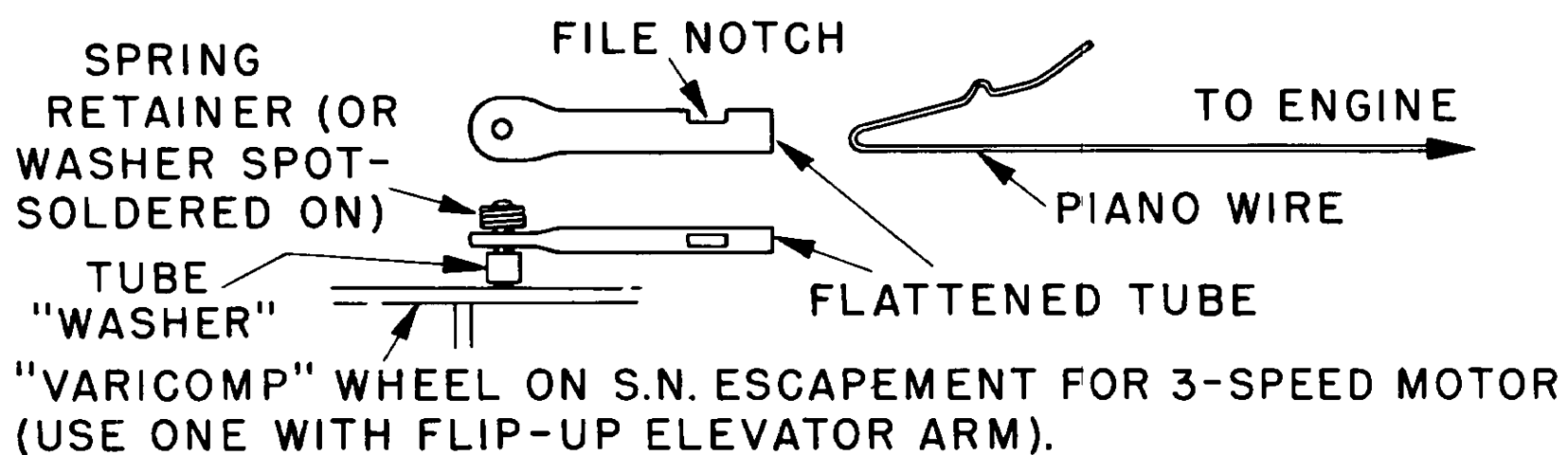
METHOD OF HOLDING TANK IN PLACE



METHOD OF ADAPTING STANDARD BONNER S.N. FOR 3-POSITION MOTOR CONTROL (WORKS ONLY ON QUICK BLIP)



QUICK CONNECTOR FOR MOTOR CONTROL AT ESCAPEMENT (STRONG!)



HOBBY HELPERS

770 HUNTS POINT AVE.
NEW YORK 59, N.Y.

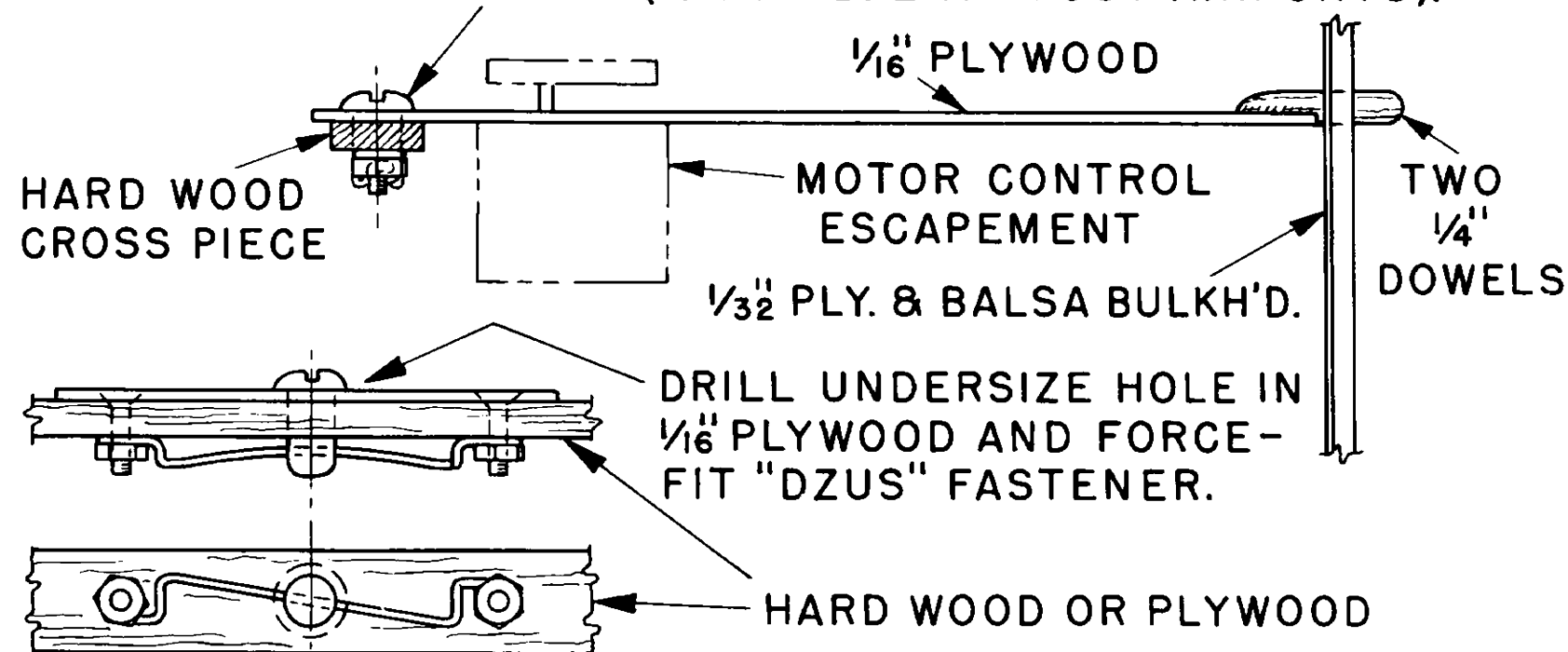
GROUP #160

(Charger; The Texan; S.E.5)

PRINTED
MATTER

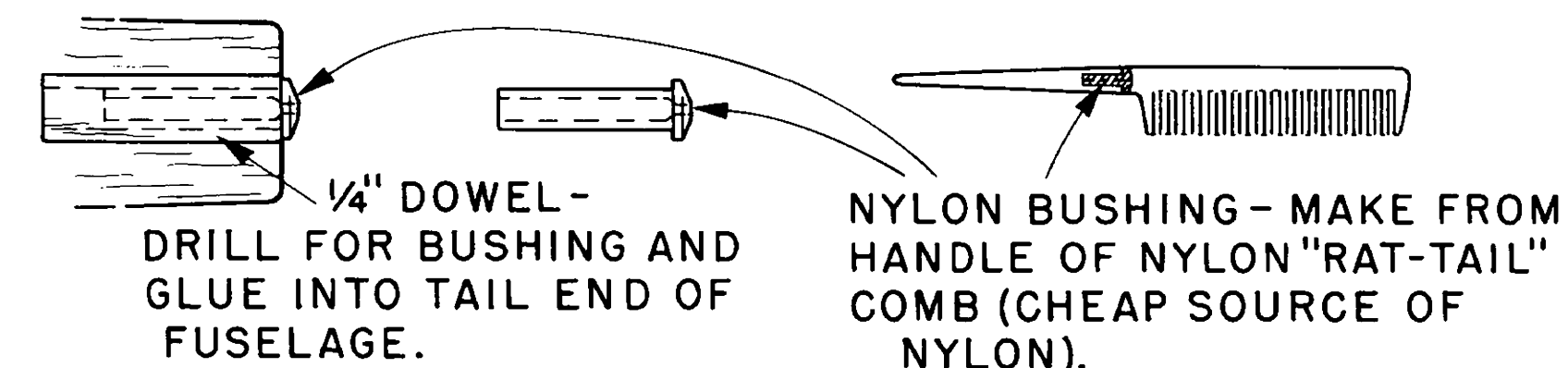
"DZUS" HOLD-DOWN FOR RADIO AND BATTERY COVER BOARD

SMALL "DZUS" FASTENER (AVAILABLE AT MOST AIRPORTS).



FRICTION DEVICE FOR NOSE WHEEL

NYLON REAR TORQUE ROD BUSHING - NO ELECTRICAL NOISE - VERY DURABLE



TORQUE ROD-TO-RUDDER CONNECTOR - NO BACKLASH OR ELECTRICAL NOISE

