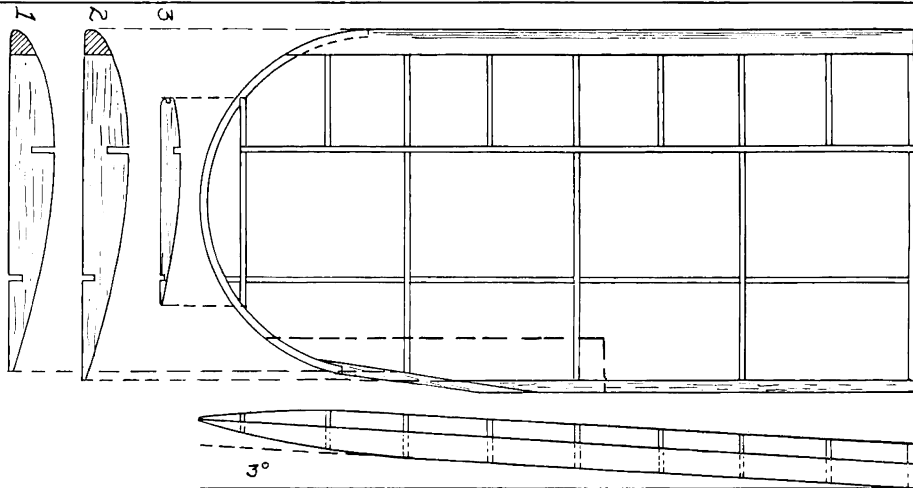


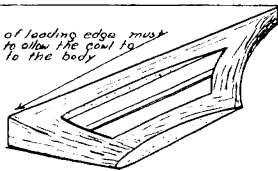
Figure 22a

Figure 22b

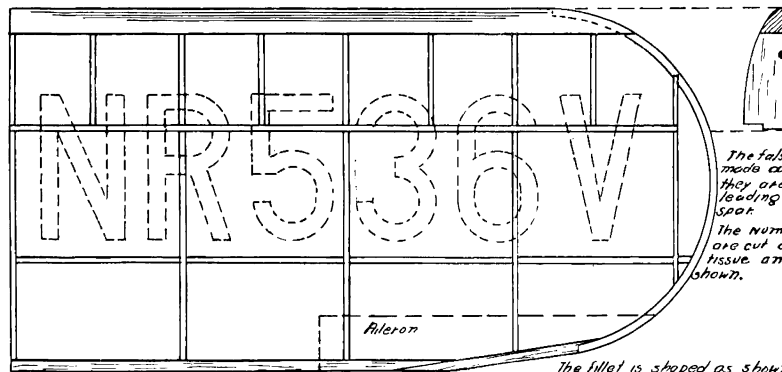


The ribs are cut from 1/16" sheet after all ribs are cut place them in their proper place. The leading edge is glued in place and sanded. The spar are then put in these places. The wing is set at a dihedral angle of 3°.  
The wing tip is 1/16" read.

Corner of leading edge must be cut to allow the gear to slip on to the body.

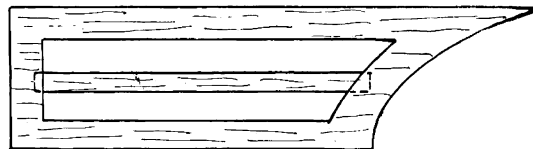
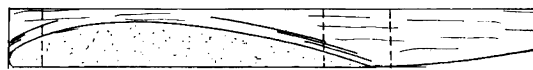


The fillet is carved as shown on the drawing.  
NOTE: The rear part of the fillet does not form a camber but remains as the block end.

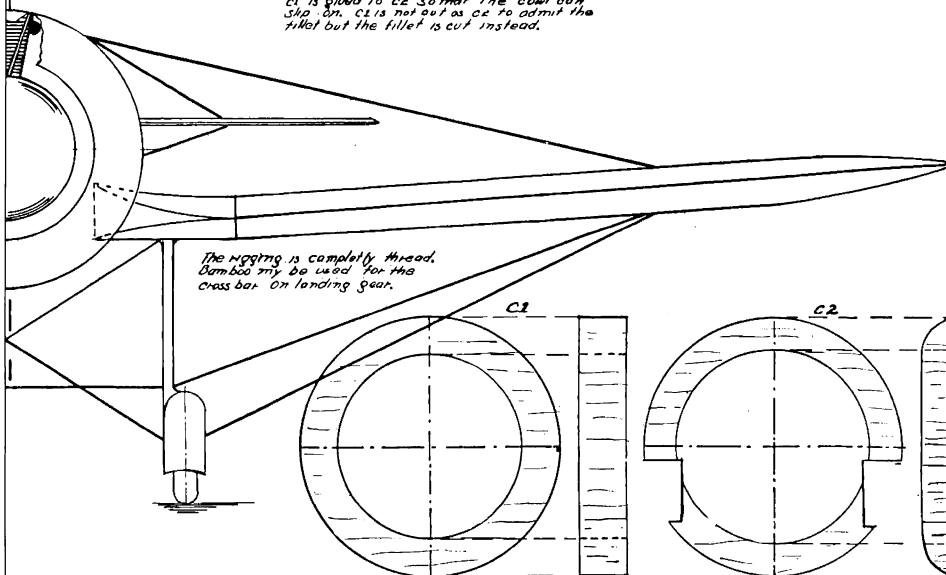


The false ribs are made out of 1/16" sheet they are glued to the leading edge and top spar.  
The numbers on the wing are cut out of black tissue and glued on as shown.

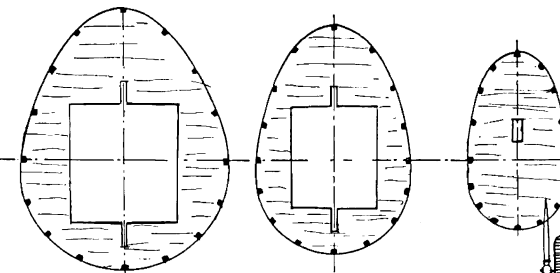
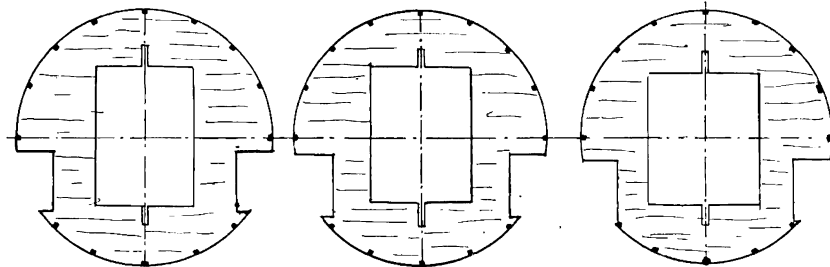
The fillet is shaped as shown.  
NOTE: The strip in the center is for the landing gear strut. The fillet is first glued to the body before gluing to wing.



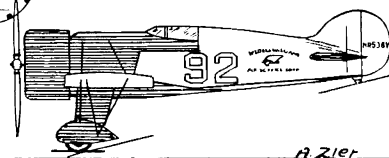
C1+C2 are carved as shown on plan. C2 is glued to formers.  
NOTE: C2 is cut so that the fillet can be glued in place.  
C1 is glued to C2 so that the cowling slip on. C1 is not cut as C2 to admit the fillet but the fillet is cut instead.



The rigging is completely thread. Don't use my do use for the cross bar on landing gear.



The formers are cut from 1/16" sheet. The stringers are 1/16" sp.  
Note: The inside notches should be cut so that they fit tightly on the jig.



R. ZIER

R. ZIER