

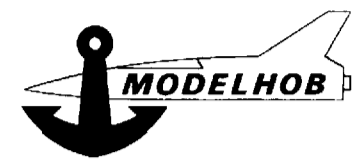
Gancho



ENTRENADOR PARA RADIO CONTROL, MOTOR 2'5 a 3'5 cc.

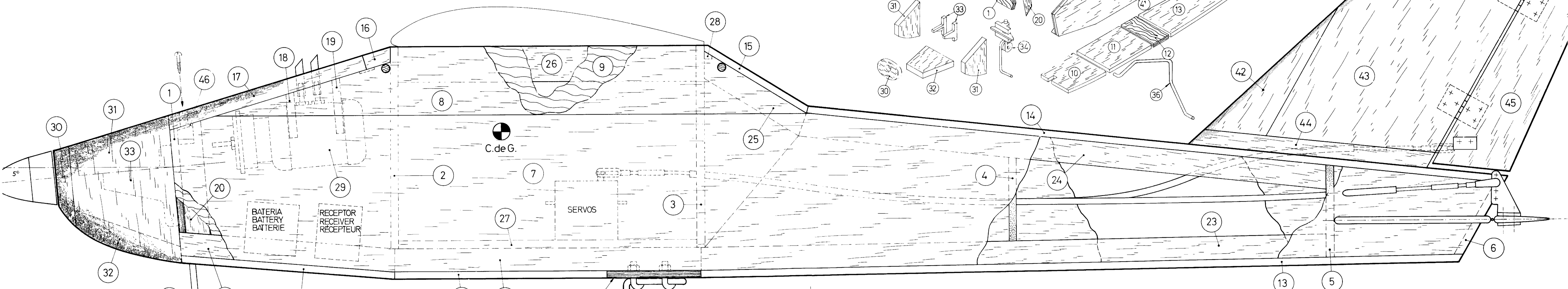
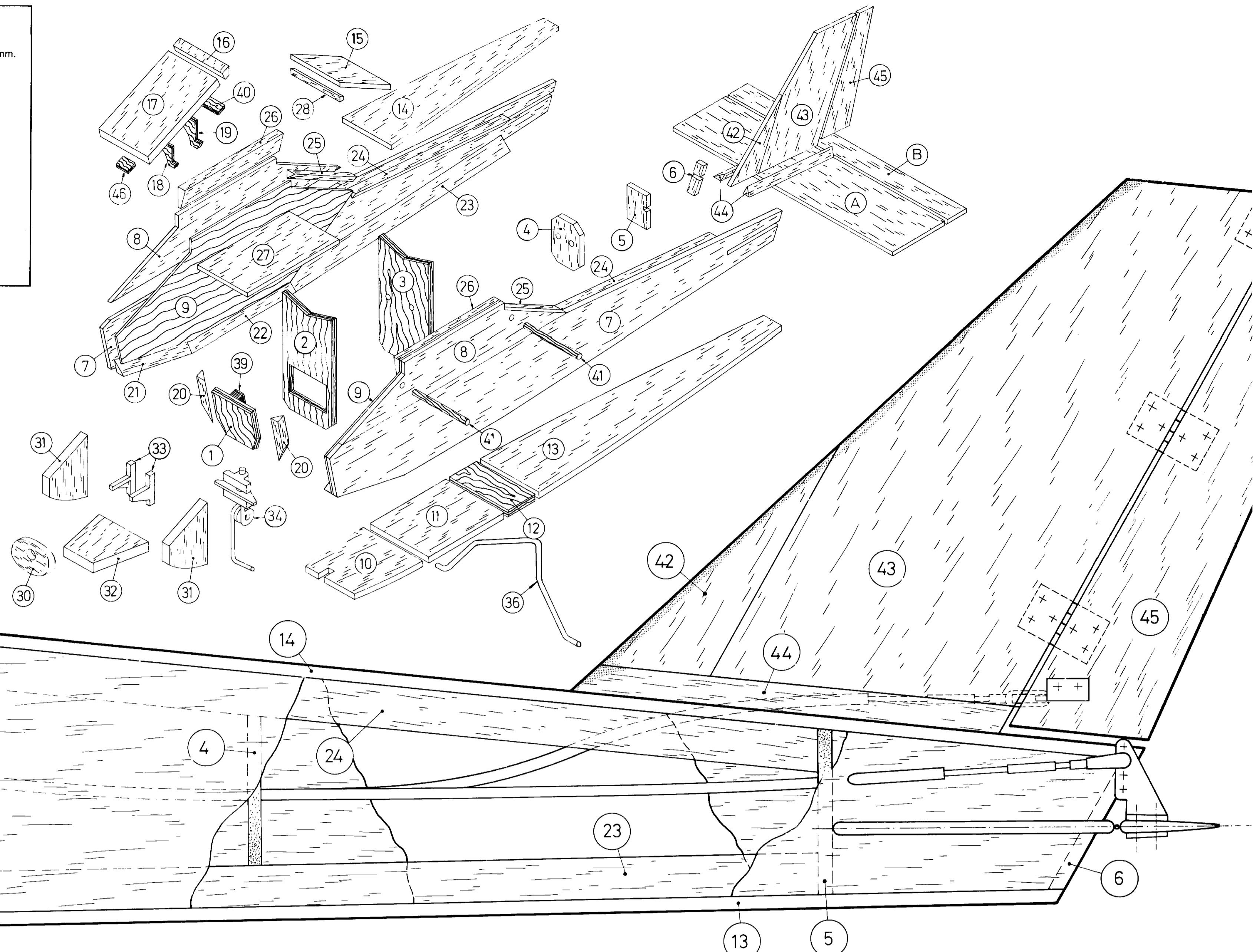
TRAINER R.C., 2.5 to 3.5 cc. ENGINE

ENTRAÎNEUR R.C., MOTEUR 2'5 à 3'5 cc.

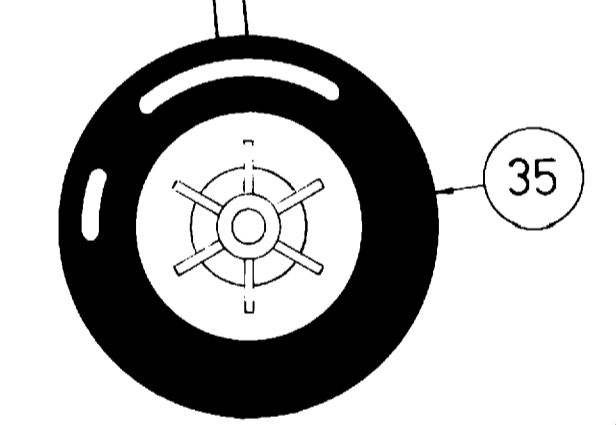


Registro nº 2285/B25

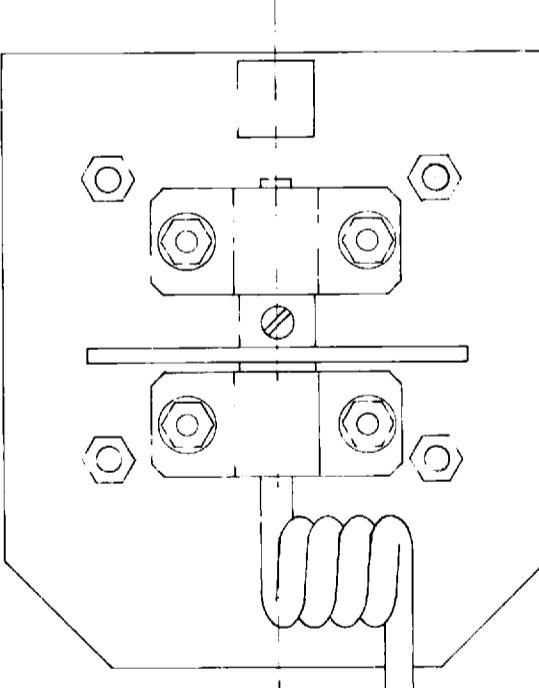
- | | |
|-------------------------------------------------|---------------------------------------------------------------|
| 1 - CONTRACH/PLYWOOD/C.T.P. - 5 mm. | 24 - TRIANGULAR/TRIANGULAIRES/BALSA 15 x 15 mm. |
| 2 - CONTRACH/PLYWOOD/C.T.P. - 5 mm. | 25 - TRIANGULAR/TRIANGULAIRES/BALSA 15 x 15 mm. |
| 3 - CONTRACH/PLYWOOD/C.T.P. - 5 mm. | 26 - BORDE DE SALIDA/END STRIP/BORD DE FUITE/BALSA 23 x 8 mm. |
| 4 - BALSA 5 mm. | 27 - BALSA 5 mm. |
| 5 - BALSA 5 mm. | 28 - BALSA 5 x 5 mm. |
| 6 - BALSA 10 x 5 mm. | 29 - DEPOSITO/FUEL TANK/RESERVOIRS - 50 cc. |
| 7 - BALSA 3 mm. | 30 - BALSA 10 mm. |
| 8 - BALSA 3 mm. | 31 - BALSA 10 mm. |
| 9 - REFUERZO/REINFORCED/RENFORCER - 0,8 mm. | 32 - BALSA 15 mm. |
| 10 - BALSA 5 mm. | 33 - SOPORTE MOTOR/ENGINE MOUNTS/SUPPORT DE MOTEUR |
| 11 - BALSA 5 mm. | 34 - TREN DELANTERO/NOSE GEAR/ROUE AVANT |
| 12 - CONTRACH/PLYWOOD/C.T.P. - 5 mm. | 35 - RUEDA/WHEEL/ROUE - 50 mm. Ø |
| 13 - BALSA 5 mm. | 36 - ACERO/STEEEL/ACIER - 4 mm. Ø |
| 14 - BALSA 5 mm. | 37 - RUEDAS/WHEELS/ROUES - 60 mm. Ø |
| 15 - BALSA 5 mm. | 38 - TORNILLOS "J" BOLT/S VIS "J" 1/8 |
| 16 - BALSA 10 mm. | 39 - HAYABEECH/HETRE - 10 x 10 mm. |
| 17 - BALSA 10 mm. | 40 - CONTRACH/PLYWOOD/C.T.P. - 1,2 mm. |
| 18 - CONTRACH/PLYWOOD/C.T.P. - 5 mm. | 41 - HAYABEECH/HETRE - 5 mm. Ø |
| 19 - CONTRACH/PLYWOOD/C.T.P. - 5 mm. | 42 - BALSA 5 mm. |
| 20 - TRIANGULAR/TRIANGULAIRES/BALSA 15 x 15 mm. | 43 - BALSA 5 mm. |
| 21 - TRIANGULAR/TRIANGULAIRES/BALSA 15 x 15 mm. | 44 - TRIANGULAR/TRIANGULAIRES/BALSA 10 x 10 mm. |
| 22 - TRIANGULAR/TRIANGULAIRES/BALSA 15 x 15 mm. | 45 - BALSA 5 mm. |
| 23 - TRIANGULAR/TRIANGULAIRES/BALSA 15 x 15 mm. | 46 - CONTRACH/PLYWOOD/C.T.P. - 1,2 mm. |



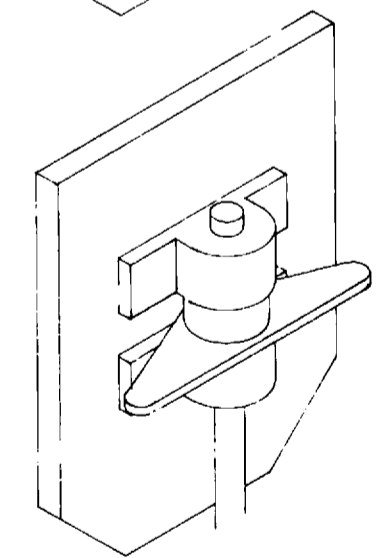
Montaje bancadas motor
Mounting of engine mounts
Montage support de moteur



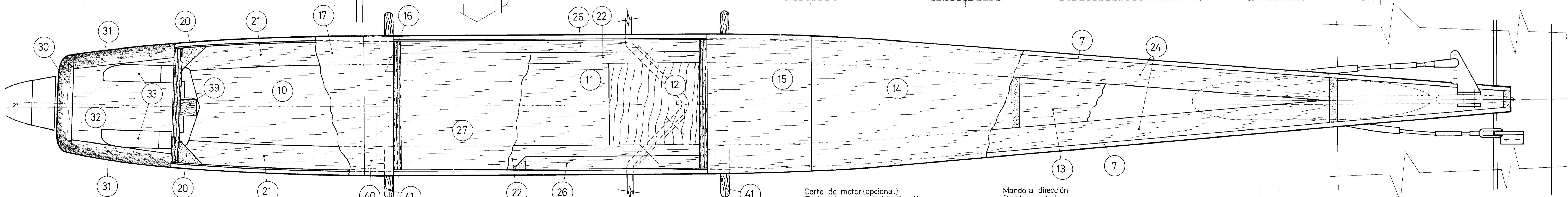
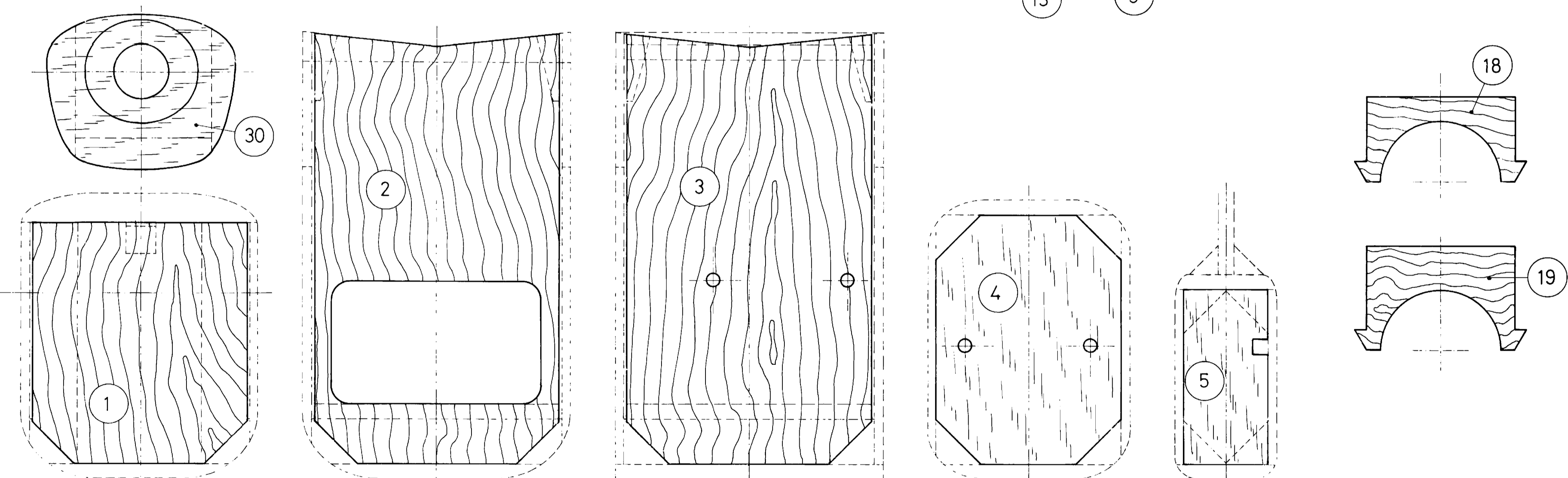
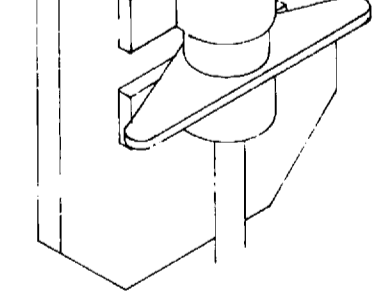
Montaje rueda delantera
Mounting of front wheel
Montage roue avant



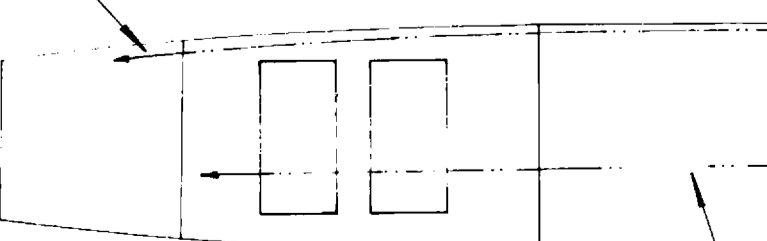
Rueda delantera fija
Bloqued front wheel
Roue avant fixe



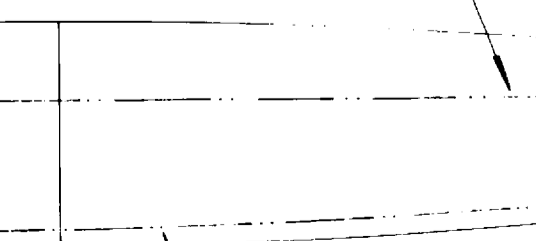
Rueda delantera orientable
Mobile front wheel
Roue avant orientable



Corte de motor (opcional)
Engine throttle control (optional)
Commande des gaz (optionnel)

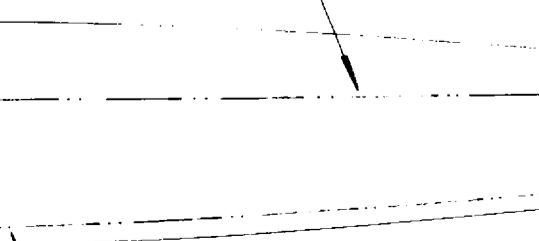


Mando a dirección
Rudder control
Gouvernail de direction



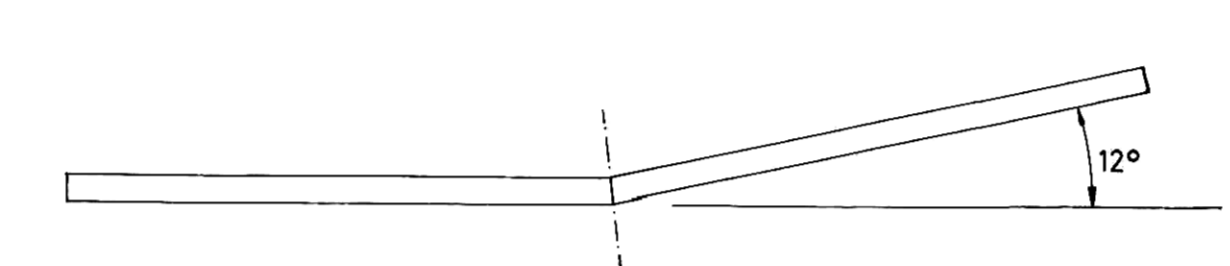
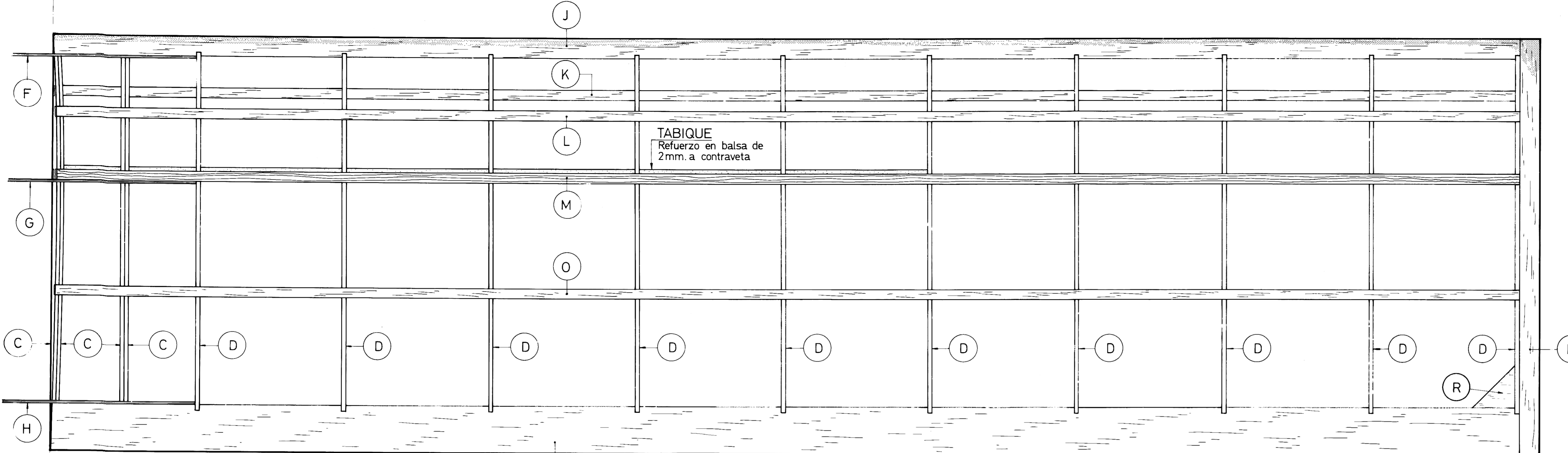
Rueda delantera orientable (opcional)
Mobile front wheel (optional)
Roue avant orientable (optionnel)

Mando a estabilizador
Elevator control
Gouvernail de profondeur

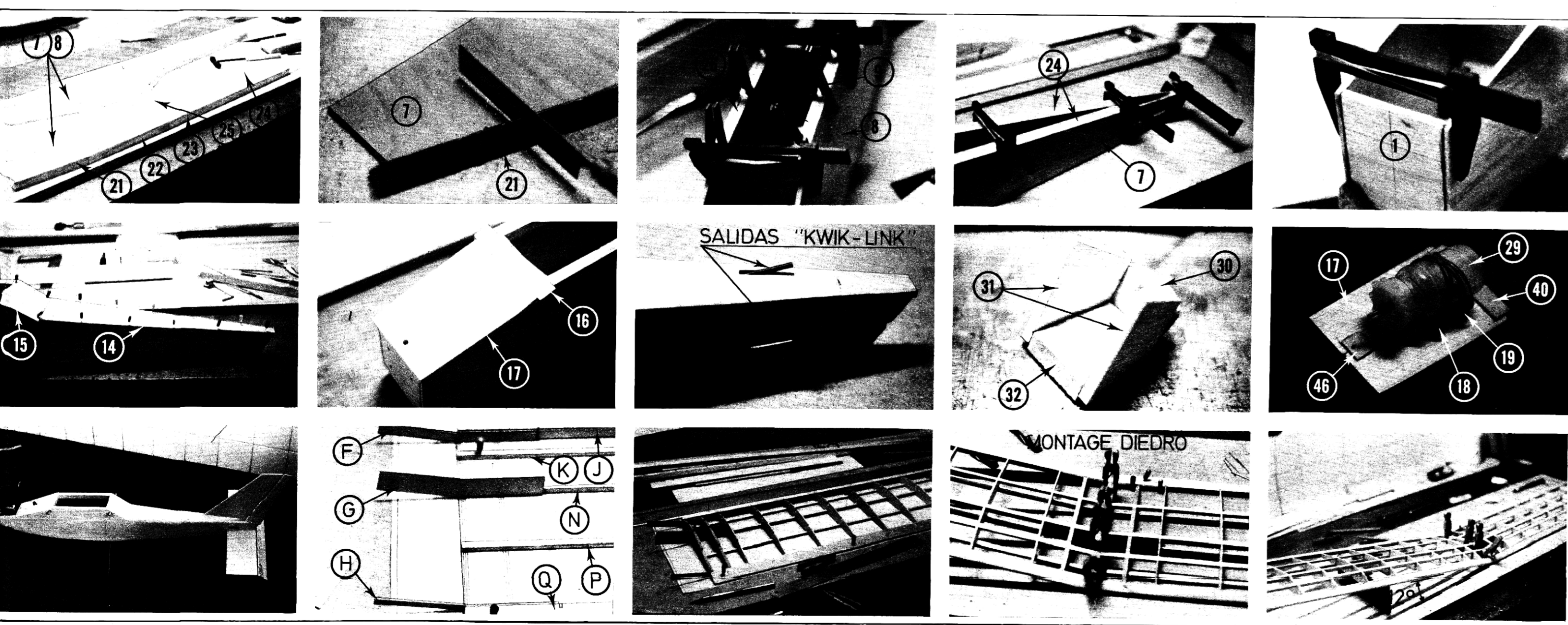
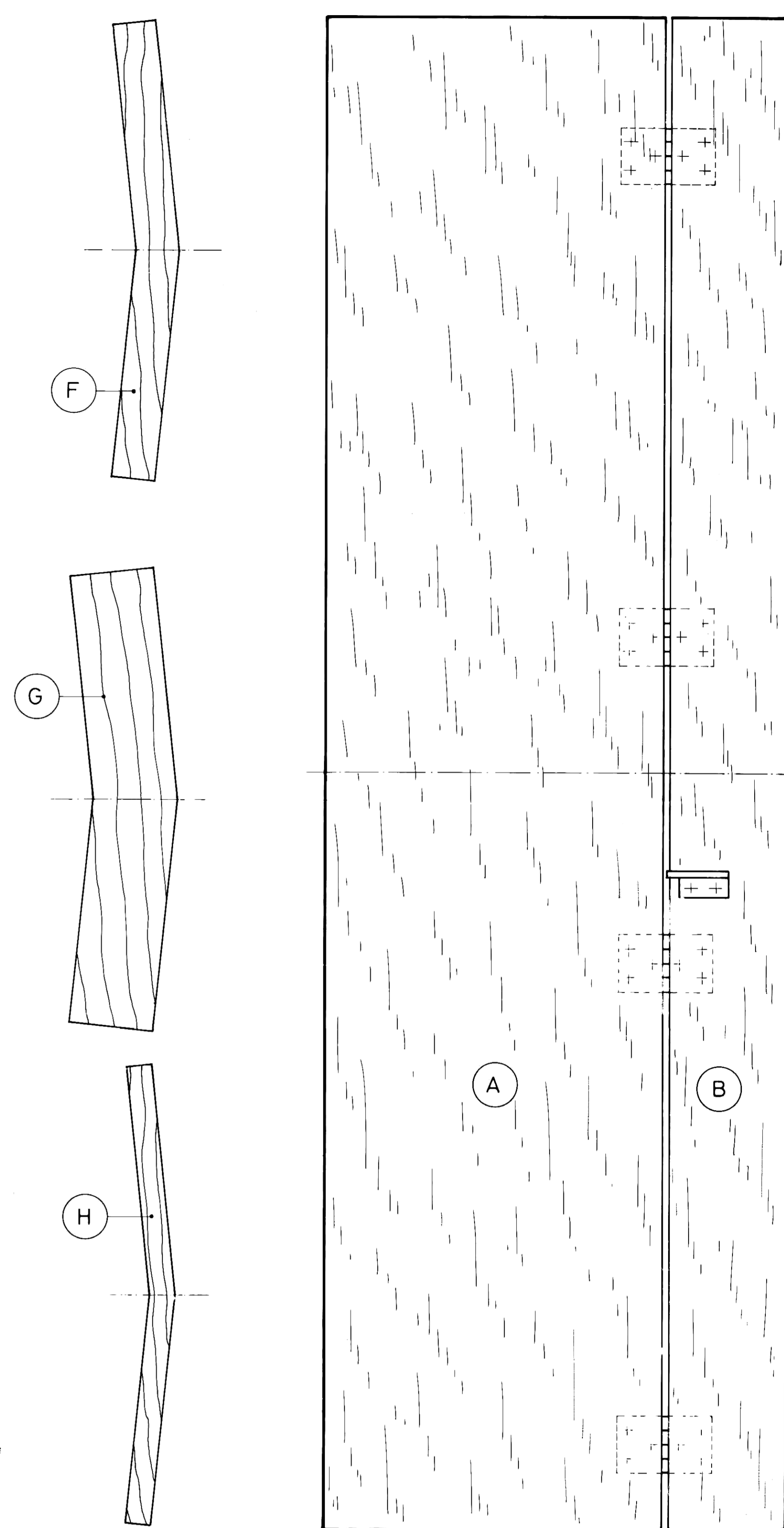
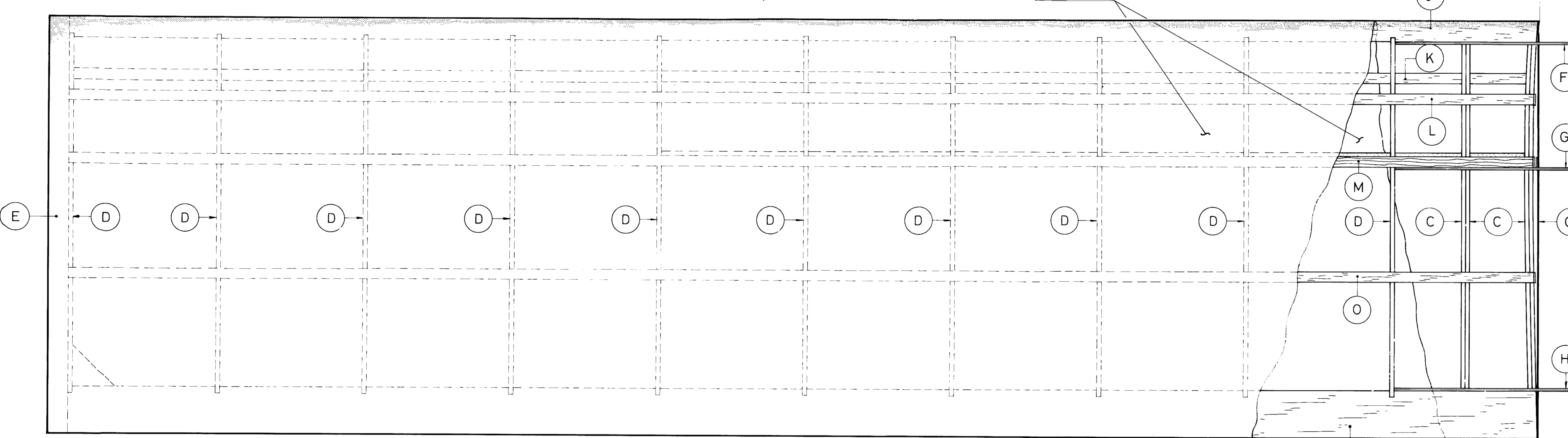


MONTAJE / MOUNTING / MONTAGE "KWIK-LINK"

MONTAJE / MOUNTING / MONTAGE
DIAGRAMAS / LINES / CHARNIERS



MODEL-SKIM



DIE-CUT PIECES / PIÈCES ESTAMPÉES

CONTRACHAPADO 0,8 mm. x2
Balsa 2 mm. x2
Balsa 2 mm. x3
CONTRACHAP. 1,2 mm.
CONTRACHAPADO 5 mm.
CONTRACHAP. 5 mm.
PIEZAS TROQUELADAS
Balsa 3 mm. x2

tabique

- A - Balsa 5 mm.
- B - Balsa 5 mm.
- C - Balsa 2 mm.
- D - Balsa 2 mm.
- E - Balsa 10 mm.
- F - CONTRACH./PLYWOOD/c.t.p. - 1,2 mm.
- G - CONTRACH./PLYWOOD/c.t.p. - 1,2 mm.
- H - CONTRACH./PLYWOOD/c.t.p. - 1,2 mm.
- J - Balsa 10 x 15 mm.
- K - Balsa 5 x 5 mm.
- L - Balsa 5 x 5 mm.
- M - PINO/PINE/PIN - 5 x 7 mm.
- N - PINO/PINE/PIN - 5 x 7 mm.
- O - Balsa 5 x 5 mm.
- P - Balsa 5 x 5 mm.
- Q - BORDE DE SALIDA/END STRIP/BORDO DE FUITE/Balsa 23 x 8 mm.

