

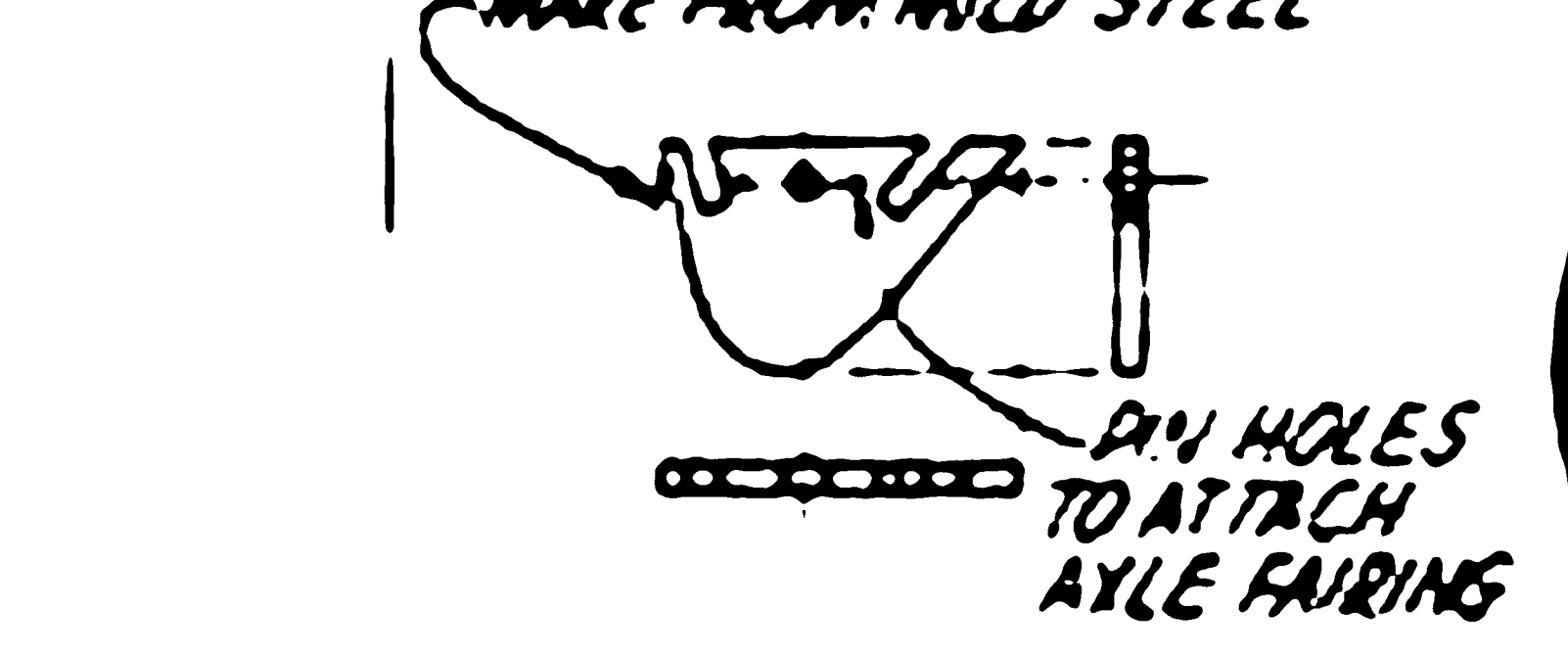
**LOUGHEAD MODEL S-1 SPORT BIPLANE 1920**  
 2" x 1" SHEET 1 OF 2  
 M.R. GROVES 1971

- NOTES:**
1. ALL FLYING SURFACES COVERED WITH SUPER CONCRETE
  2. STD. KRAFT SERVO MOUNTS USED, AILERON MOUNT ON FS, 3 SERVO MOUNTS BETWEEN FA & FS
  3. TURNBUCKLES PROCTOR #2 SIZE
  4. ALL ATTACH BOLTS 0-80 SCREWS
  5. WING WAKES MADE FROM EYE GLASS HINGES, 6 REQ'D
  6. RADIATOR ATTACHED WITH #2 SCREWS
  7. ALL RIGGING PROCTOR #601C CABLE
  8. CABANE/WING MOUNT MAKE FROM 9/16" ID TUBE

ONLY MARKING ON ENTIRE AIRCRAFT

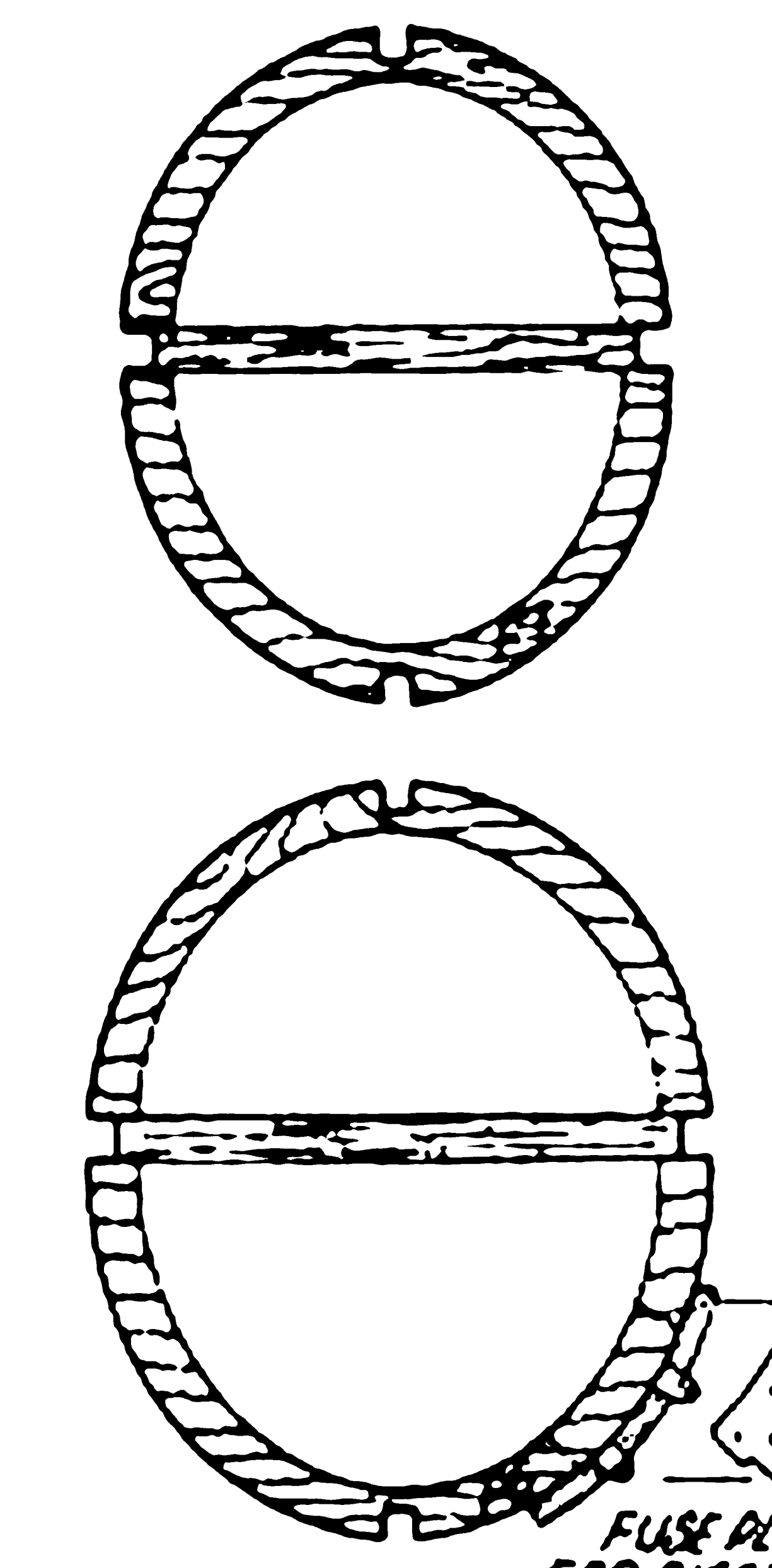
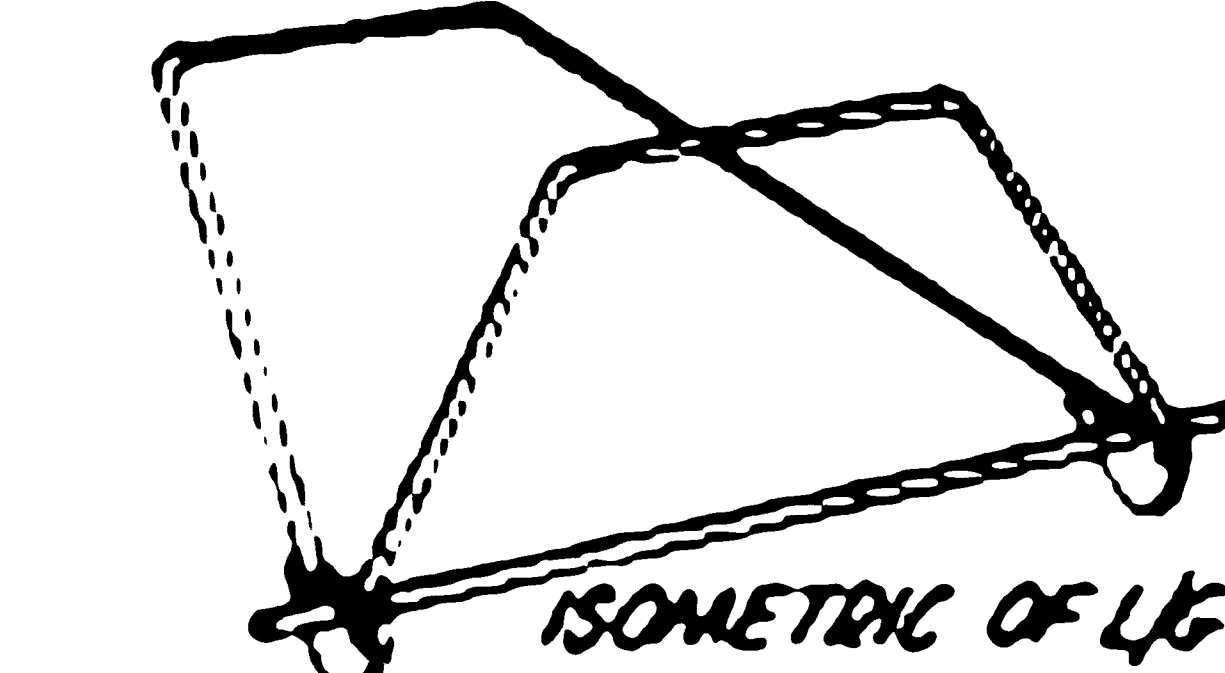
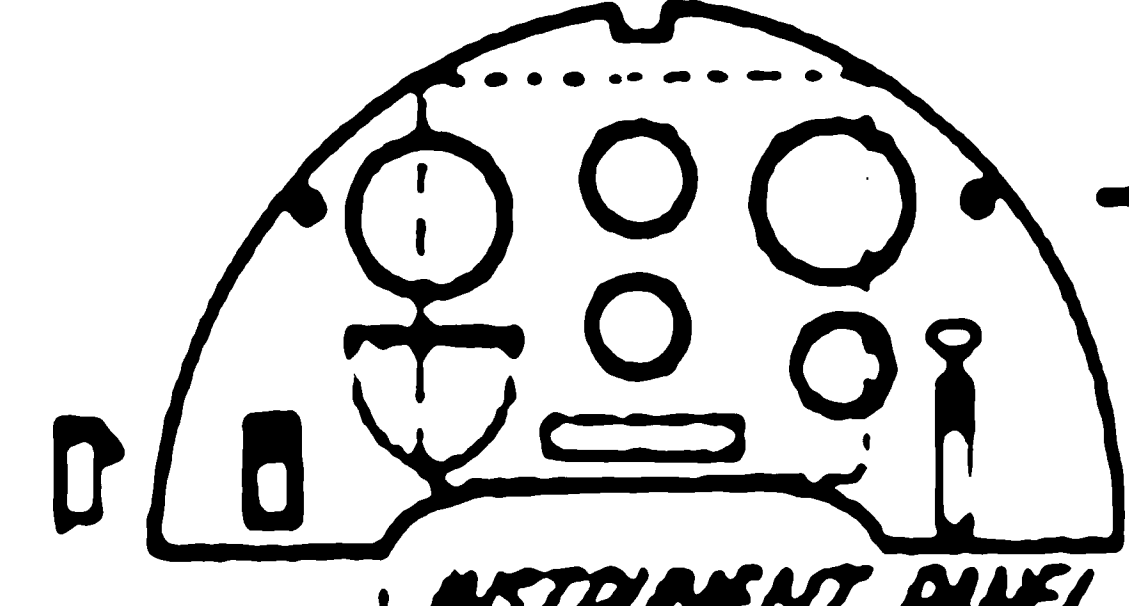
**LOUGHEAD MODEL S-1**

LETTERING DETAIL ON RUDDER



ABS PLASTIC SPINNED W/ENGINE FAIRINGS PULLED OVER FORMS

TAD # MOUNT WITH 0-80 SCREWS 8 REQ'D



"V" STRUT LAMINATED 1/16" PLY 3 SHEETS

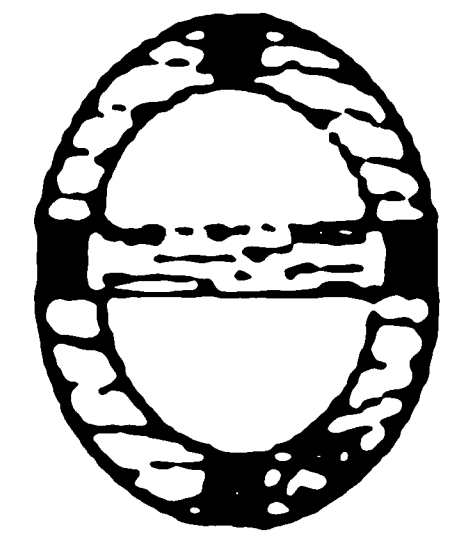
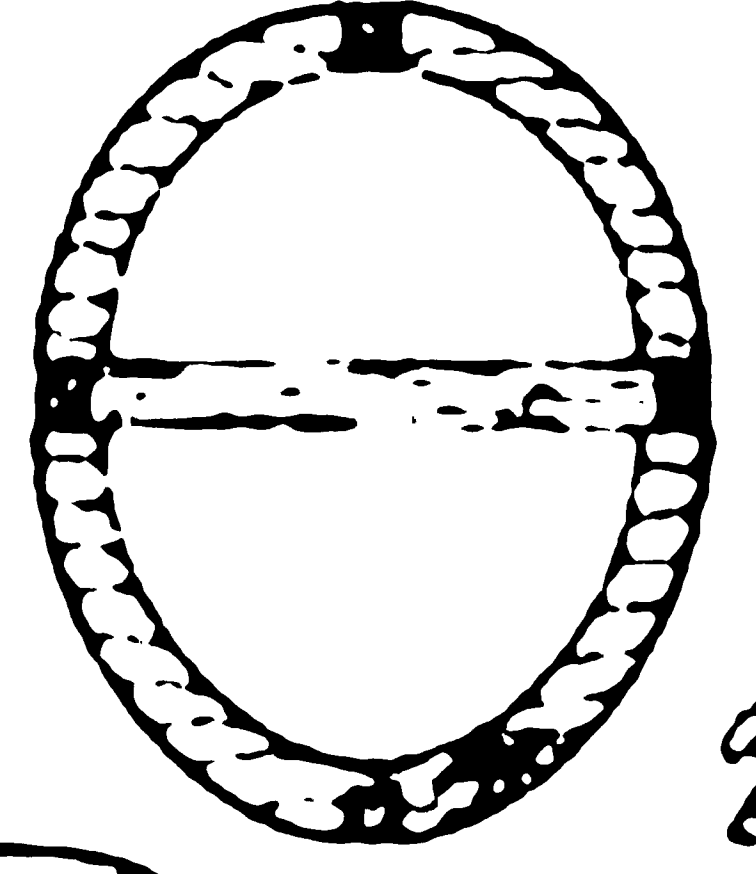
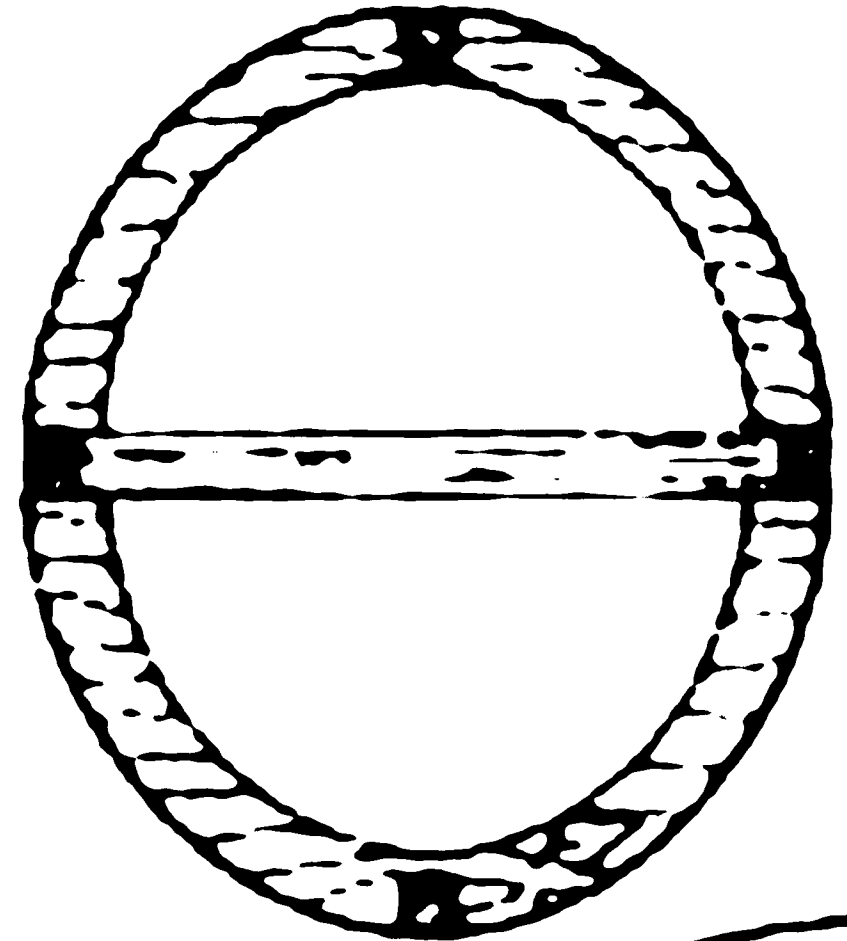
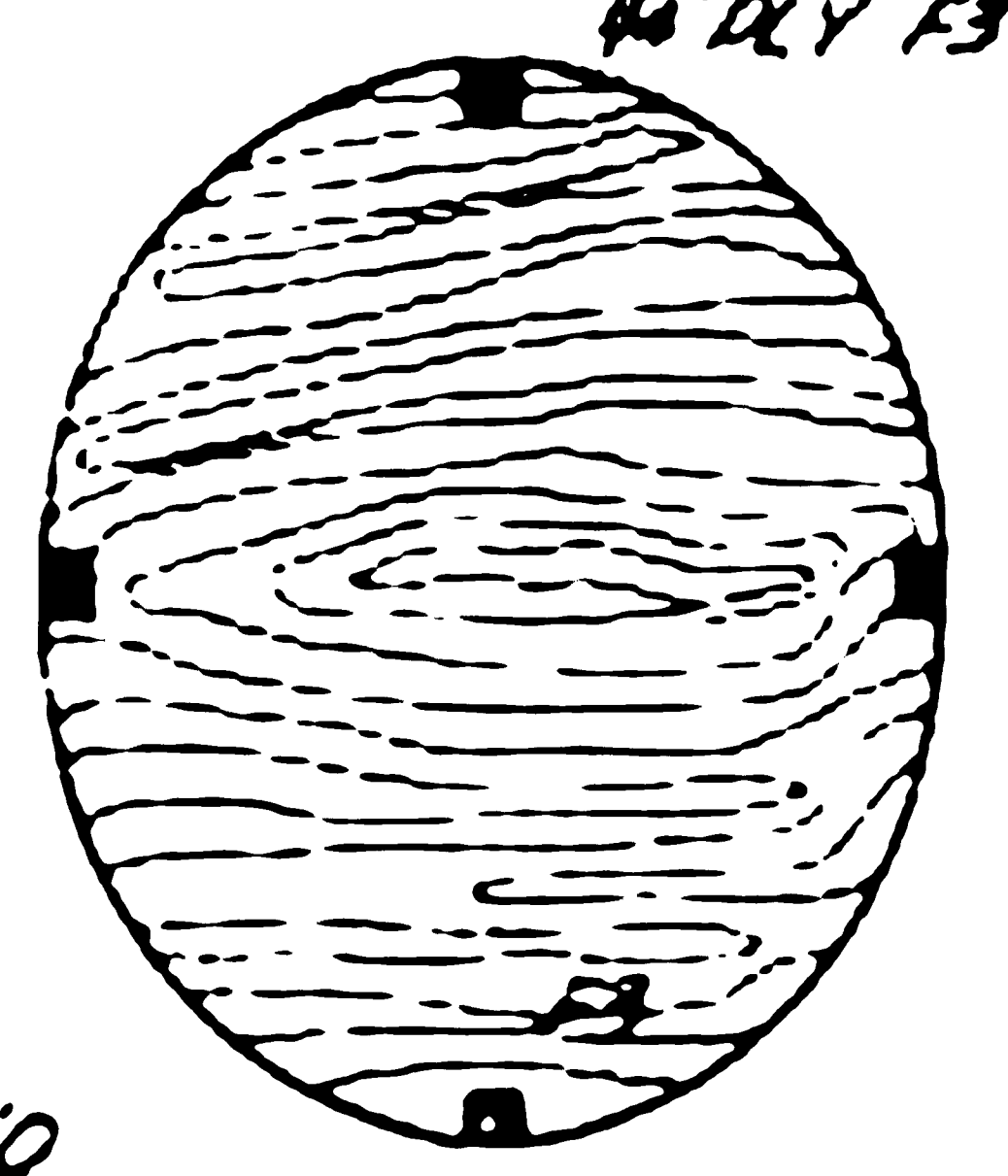
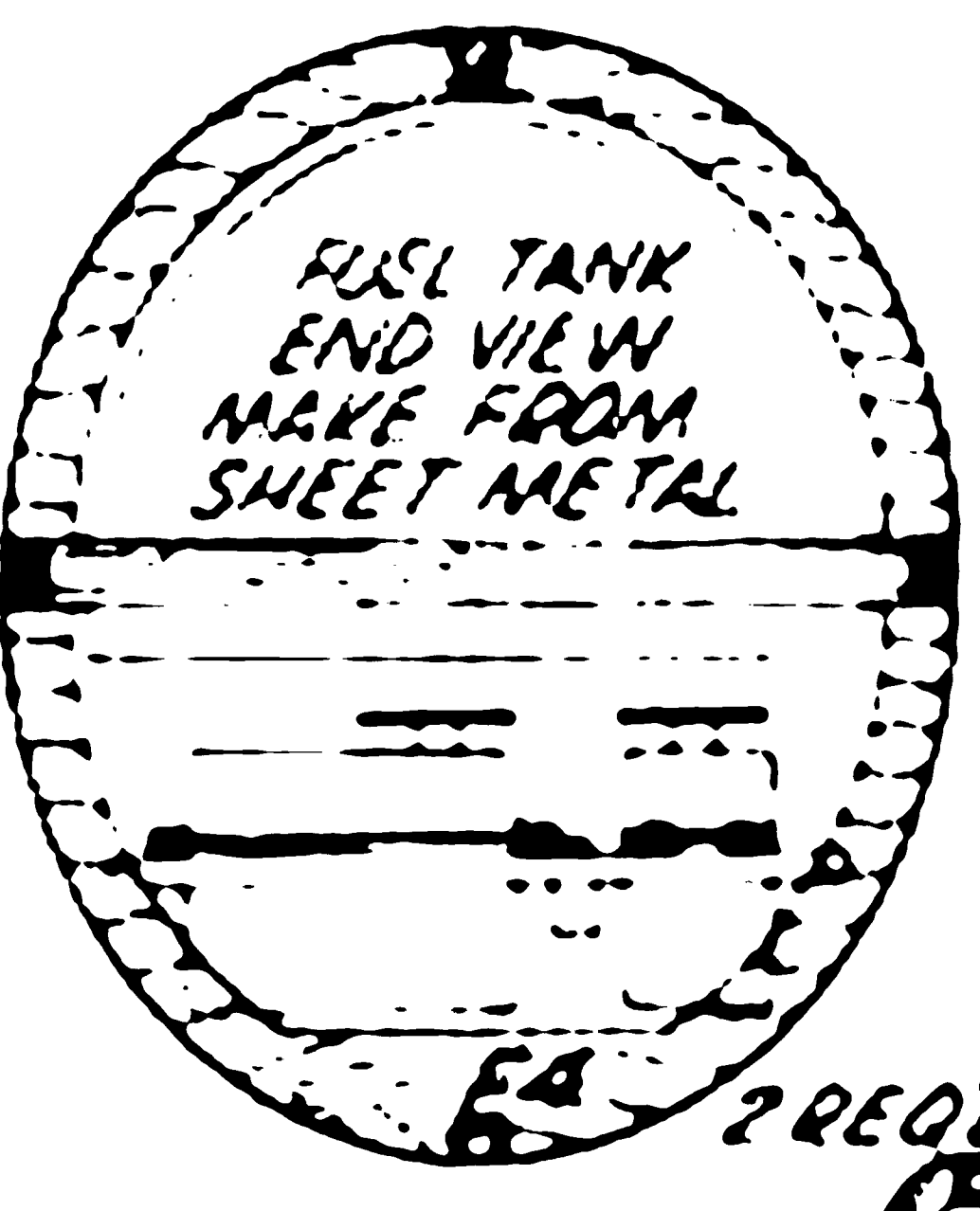
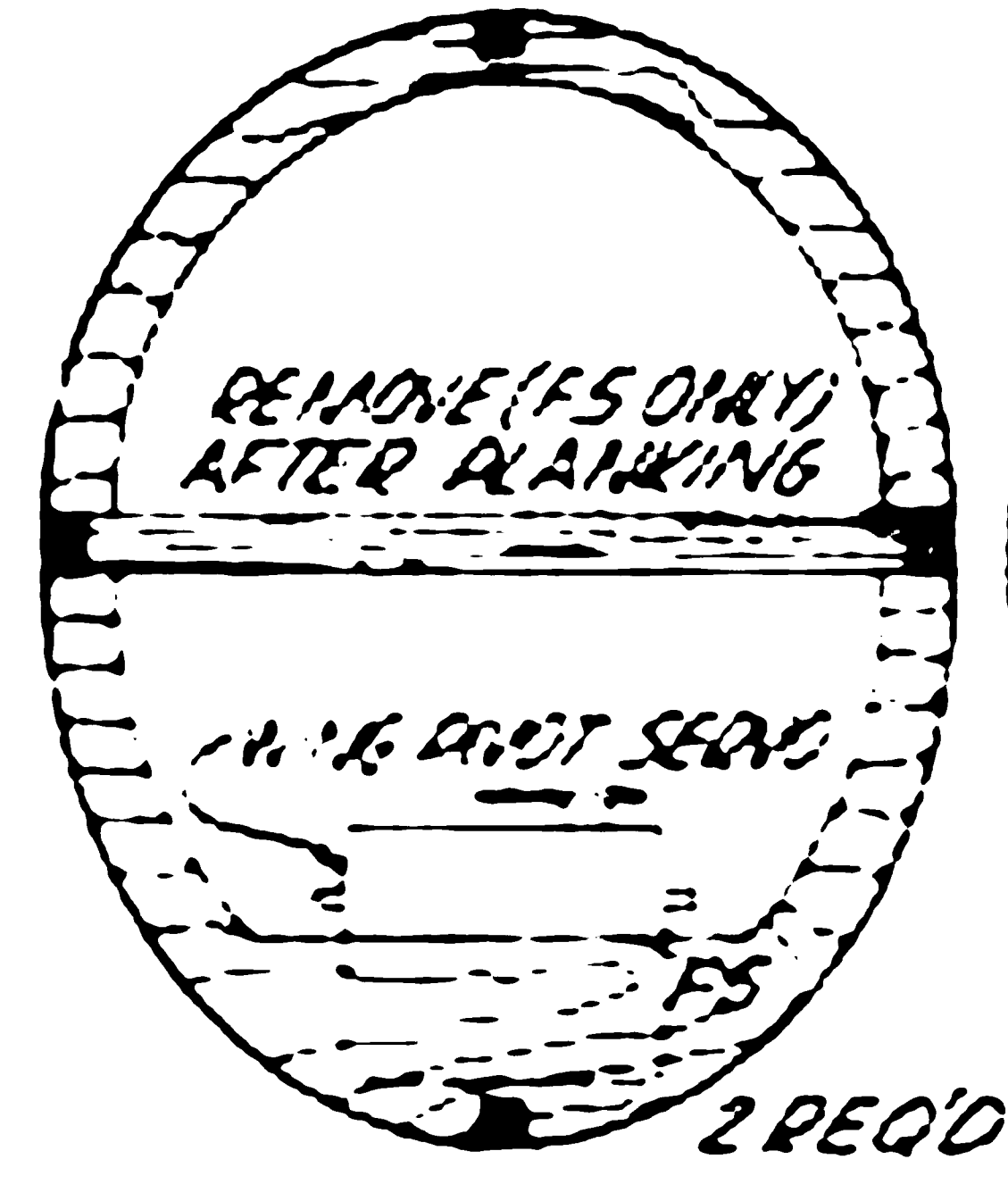
SHOT ALUM ATTACH TO RIB 2 REQ'D

RADIATOR PATTERN MAKE FROM SHEET BRASS

STEP PATTERN SHEET BRASS

MOLE FOR ANTENNA STORAGE

ALL FORMERS 1/8" DLY (EXCEPT F3 & F1 AS NOTED)



BRASS SHEET LOWER WING PIVOT

UPPER "V" STRUT WIRE ATTACH PATTERNS

LOWER "V" STRUT WIRE ATTACH PATTERN

RIG TO 36° DIHEDRAL

RIG TO 14° DIHEDRAL

SCALE PADD (DIAMETER 11" 1/2) DOWN PADD 1/2" SCALE 1

CABANE/WING MOUNT FRONT & REAR CABANE RAT PATTERN 5/16" DIA WIDE

CABANE/WING MOUNT SOLDED TO CABANE 2 SCREWS TO WING

LAMINATED FROM 3 SHIT 1/16" BALS

FUSE PLATE FOR RIGGING ATTACH 2 REQ'D

AXLE FAIRING SEE DETAIL ABOVE

WHEELS ARE PINNED TO AXLE SO THEY ROTATE TOGETHER

SOFT ROLLED LEATHER STITCHED AROUND COCKPIT

1/16" PLANKING

7/8" x 1/4" SQUARE STRINGERS TOP & BOTTOM

1/4" x 1/8" BALS

5/16" WIRE

TAIL SKID SHOE MAKE FROM BRASS SHEET

STEPS - THIS SIDE ONLY SEE PATTERN

TURNUED ALUMINUM SPINNER PLATE

SEE ISOMETRIC & FULL PATTERN

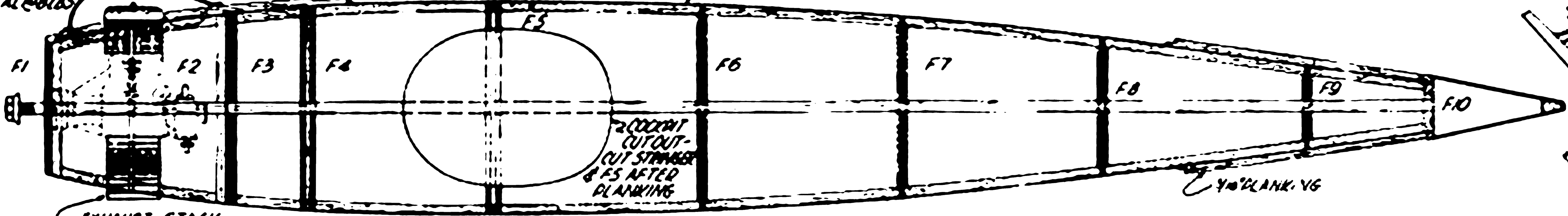
5/16" WIRE (COVERED) OR WILLIAMS WHEELS

PIV HOLES TO ATTACH AXLE FAIRING

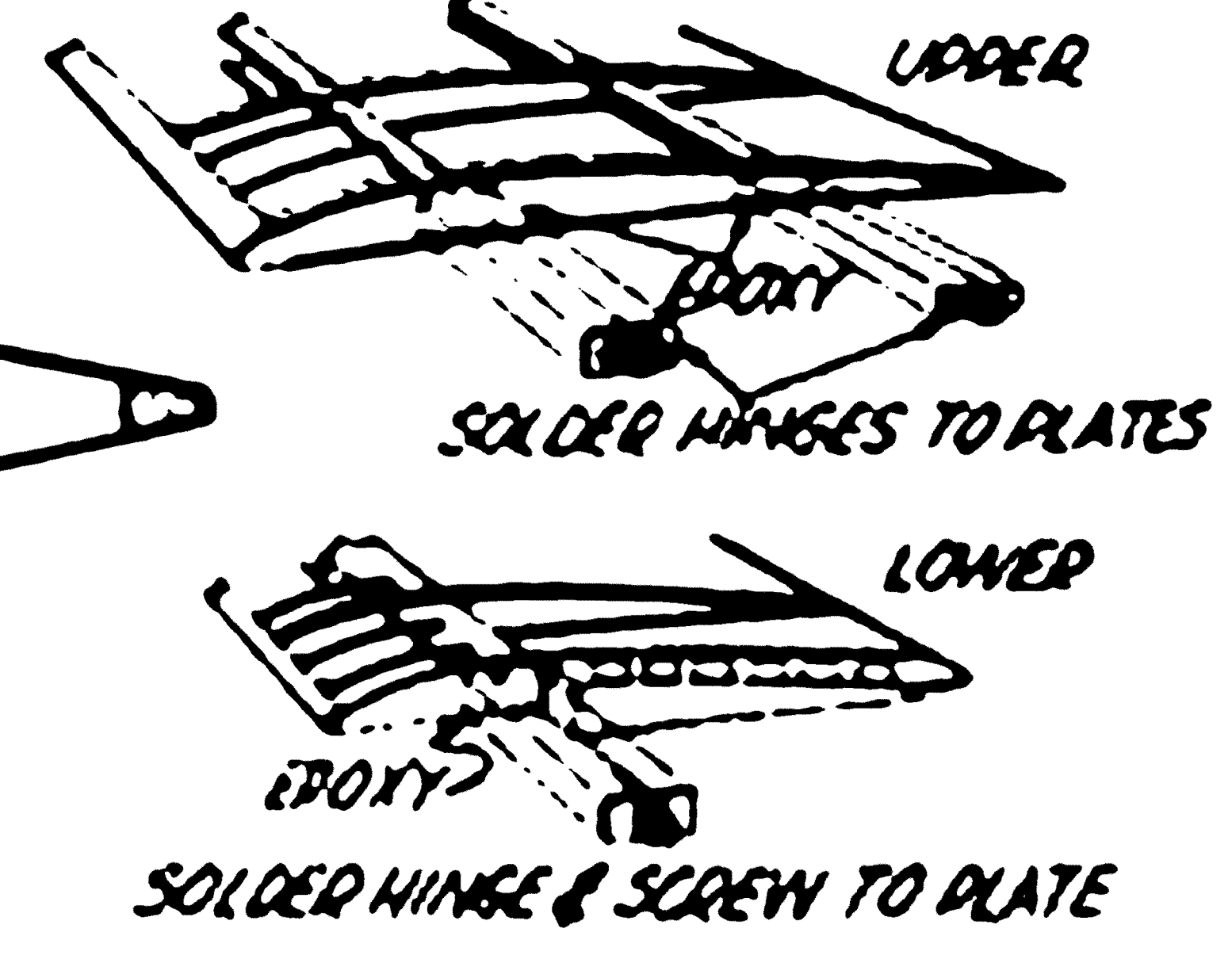
ENGINE POWERED  
40 REAL @ BIAS

REAR VIEW OF CRUTCH

1/4" x 1/8" Balsa

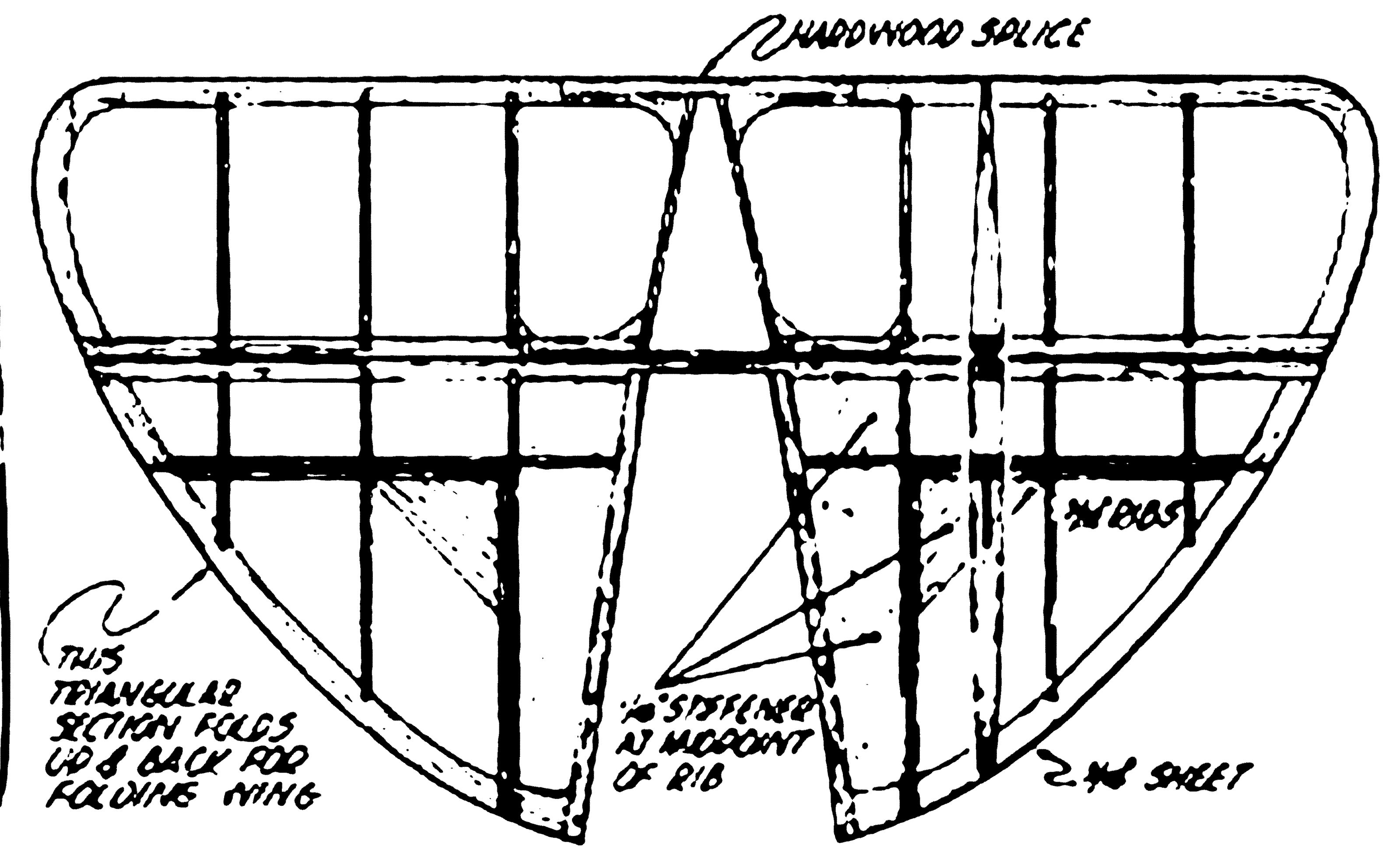
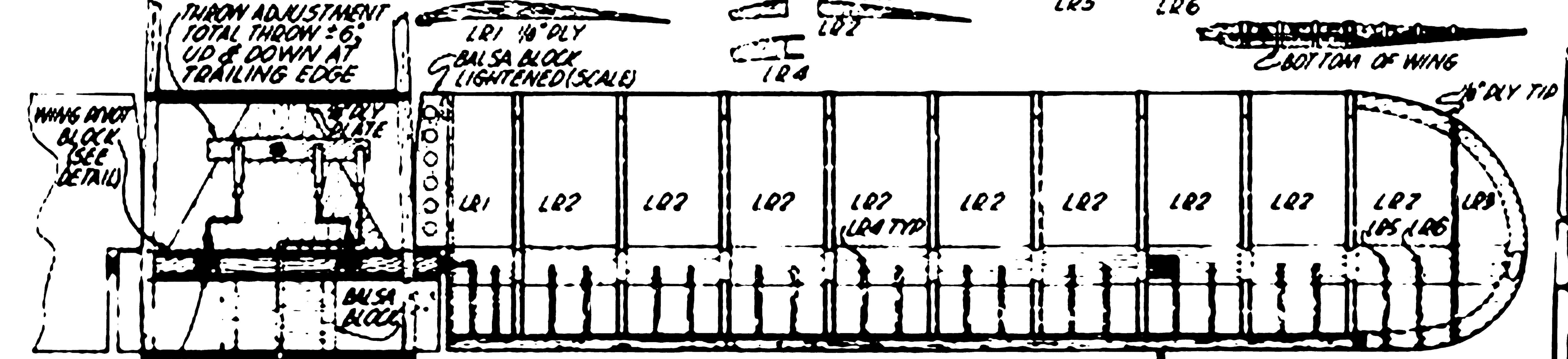


WINGS HINGE ATTACHMENT

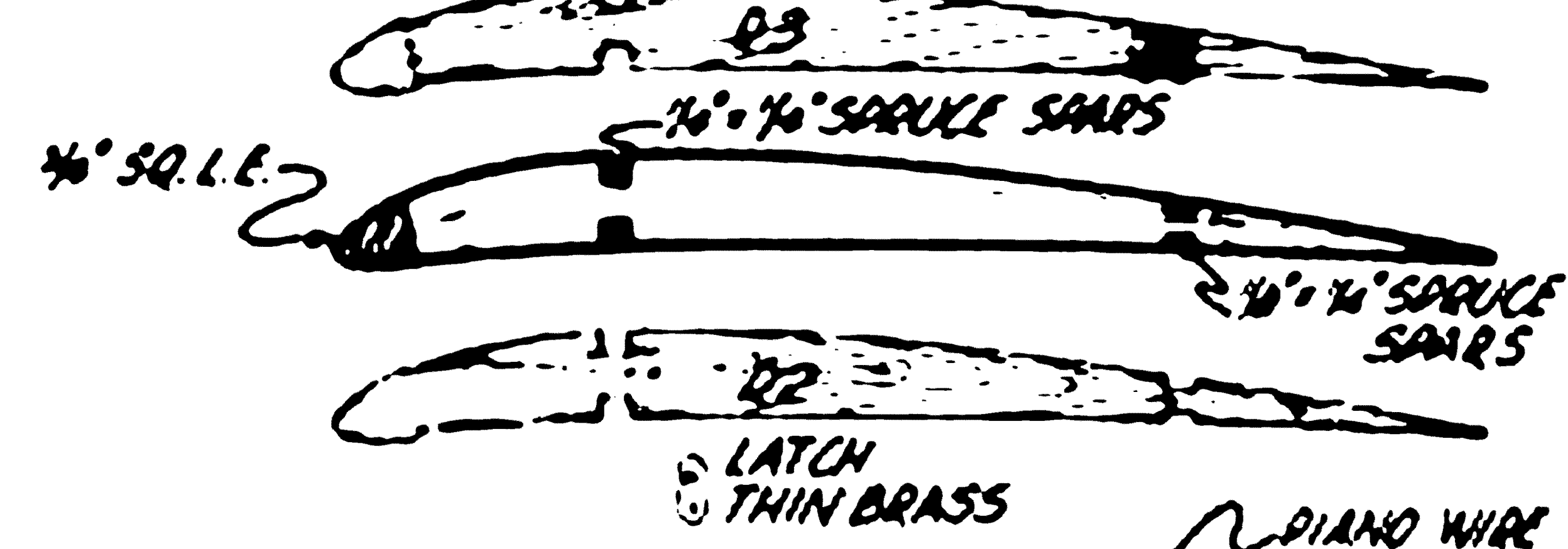


EXHAUST STACK  
IN COUL - SEE TEXT

THROW ADJUSTMENT  
TOTAL THROW = 6°  
UP & DOWN AT  
TRAILING EDGE



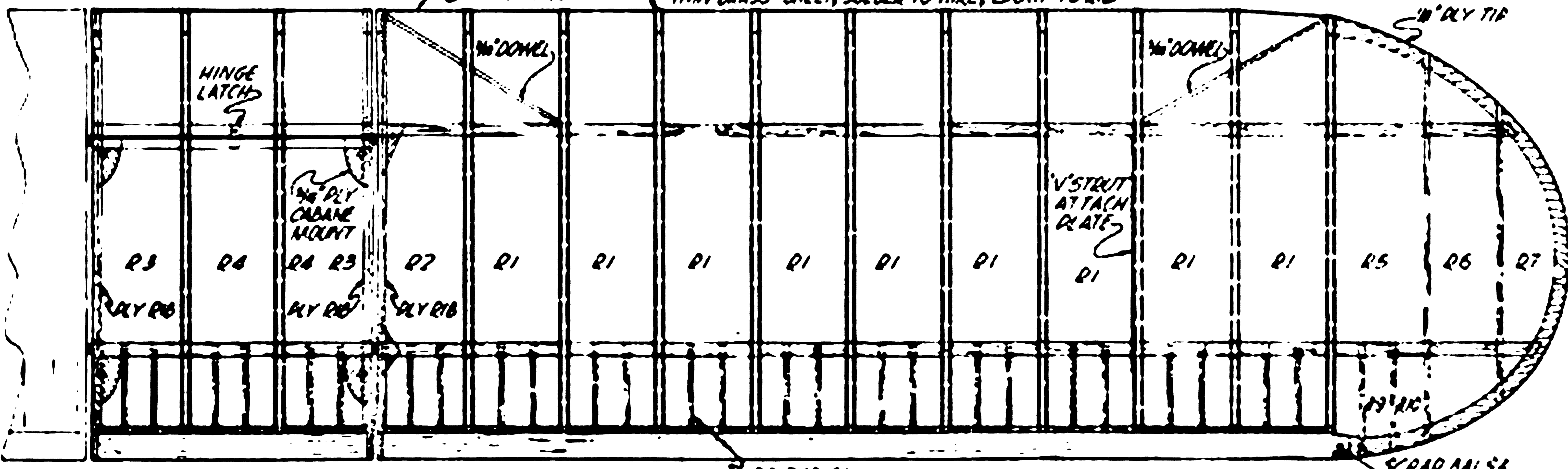
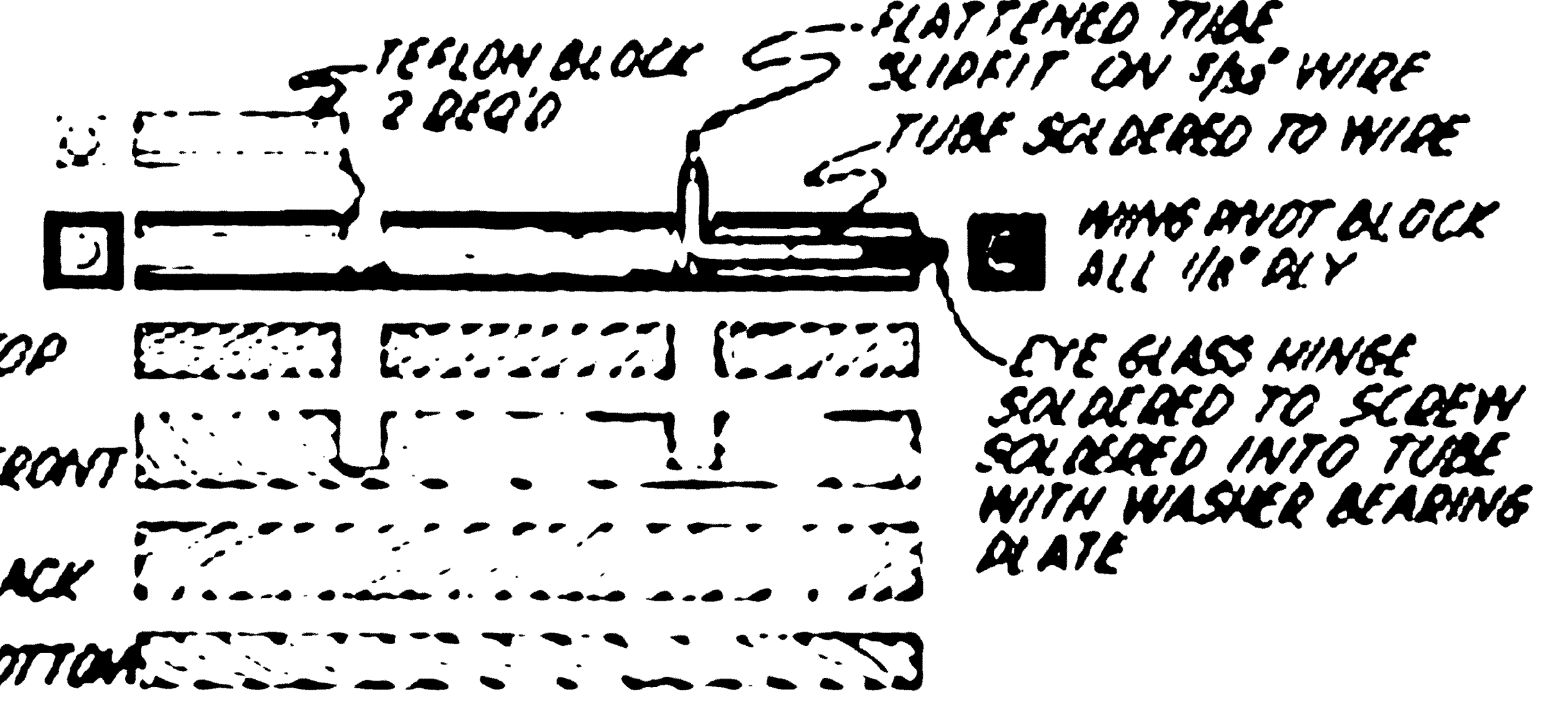
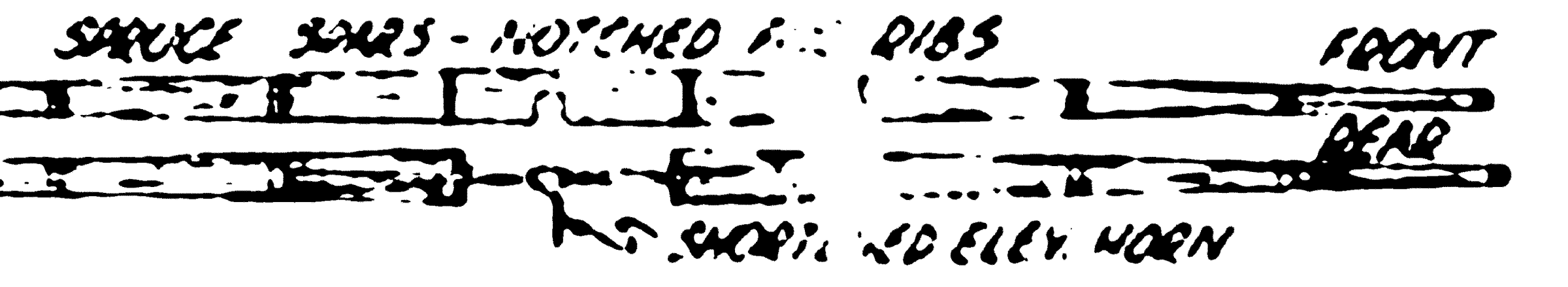
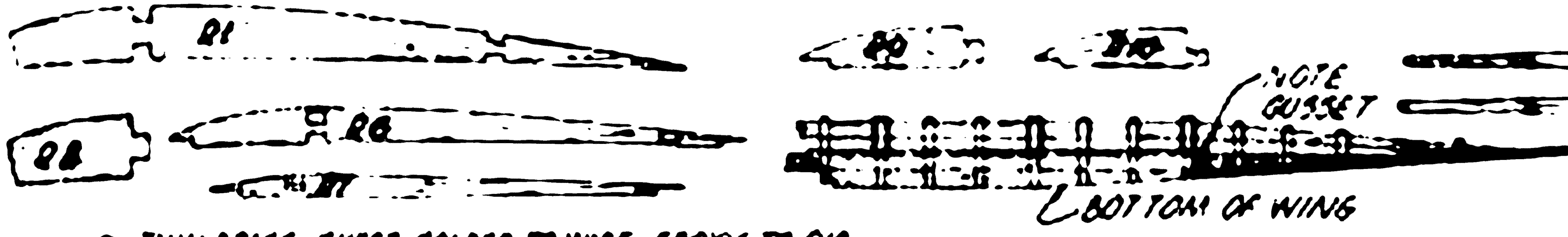
ROCKET CITY  
MOSING LINK



SPRUCES BOX SAND DETAIL  
RIBS OMITTED - SEE RIB DETAIL  
FOR CROSS SECTION

LOWER WING STRUT DIVOT  
SMALL RT ANGLES SOLDERED TO  
PLATE #2 SCREWS TO BOX SPAR

THIS TRIANGULAR  
SECTION FOLDS  
UP & BACK FOR  
FOLDING WING



RIGGING & COLOR DETAIL  
SHADED SECTIONS MAROON HOBBY DORY  
LIGHT SECTIONS CREME DORE  
LETTERING & COCKPIT LEATHER BLACK  
RADIATOR ALL EXPOSED METAL FITTINGS BROWNSTEER GREEN

NOTES:  
1. ALL RIBS 1/8" Balsa EXCEPT AS SHOWN  
2. CAPSTRIPS 1/16" x 3/16" Balsa