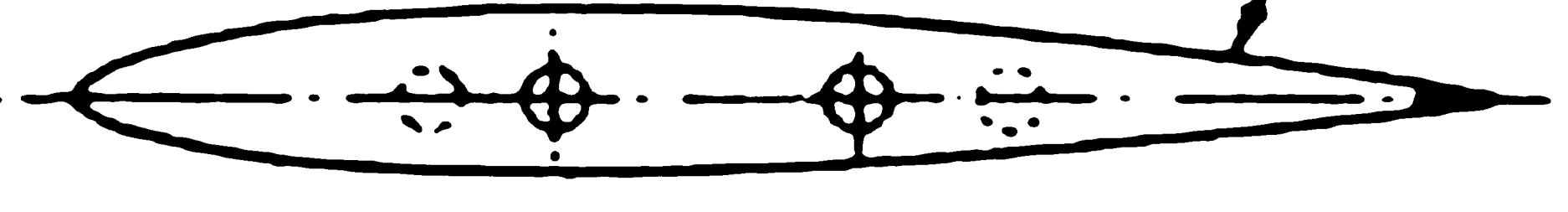


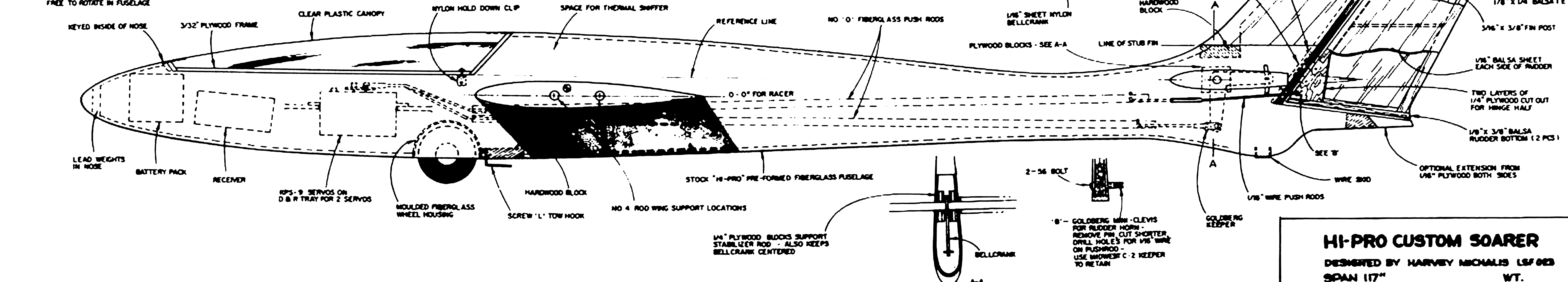
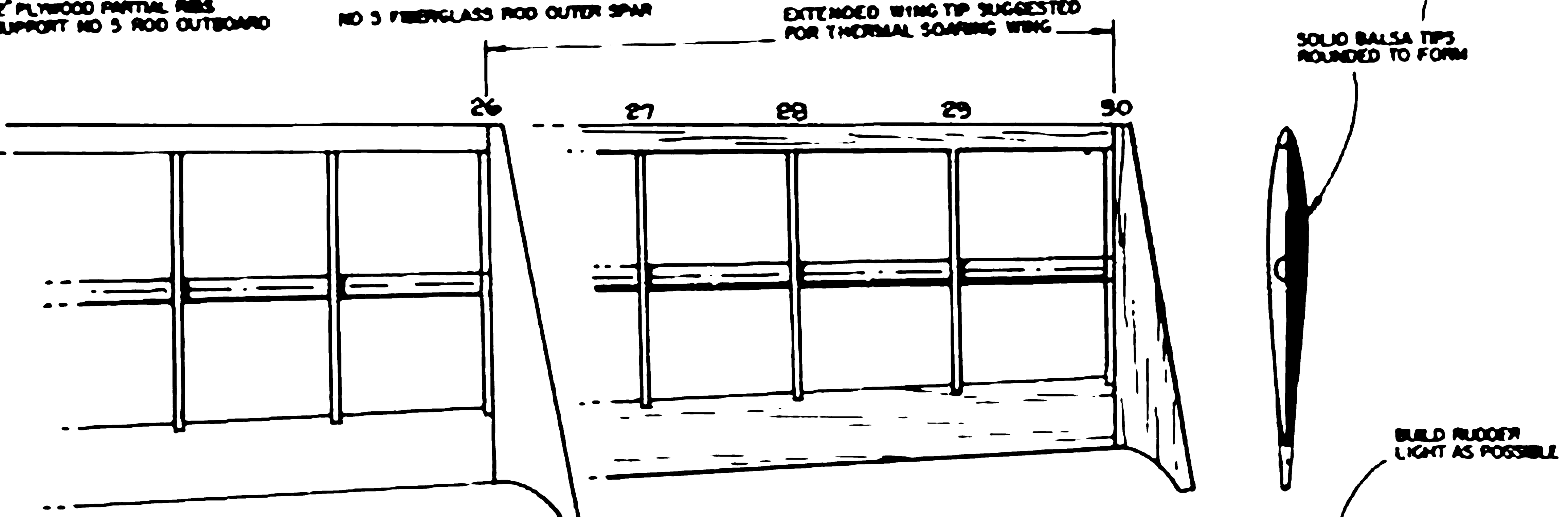
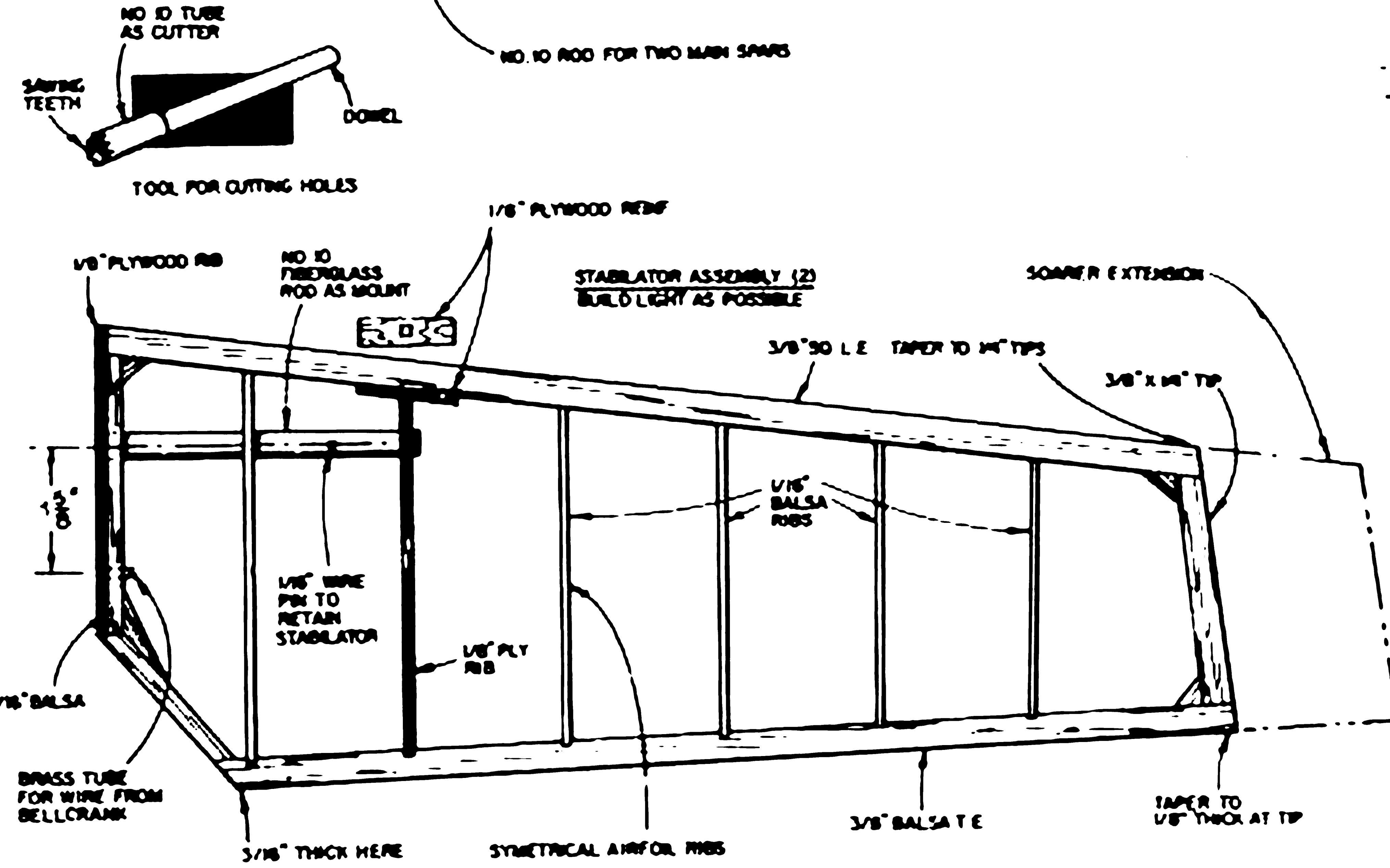
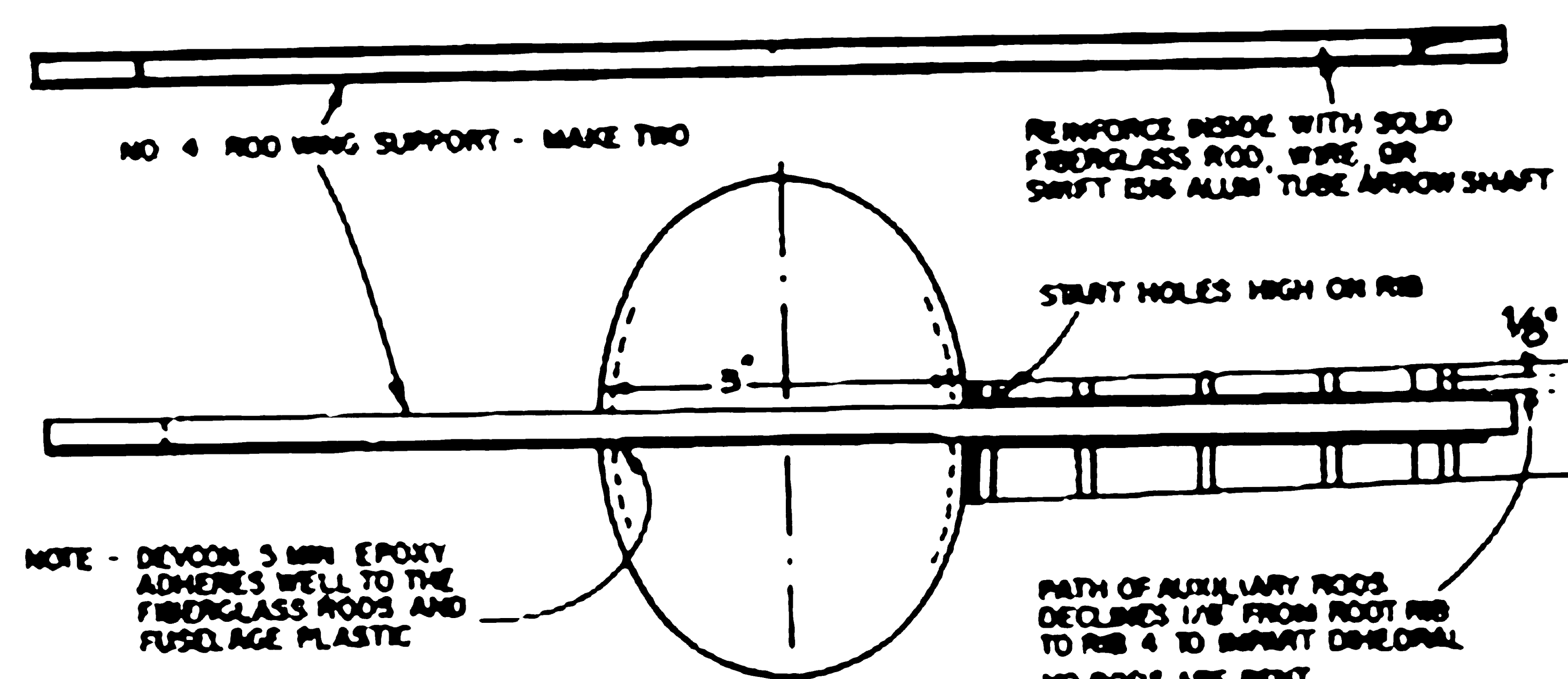
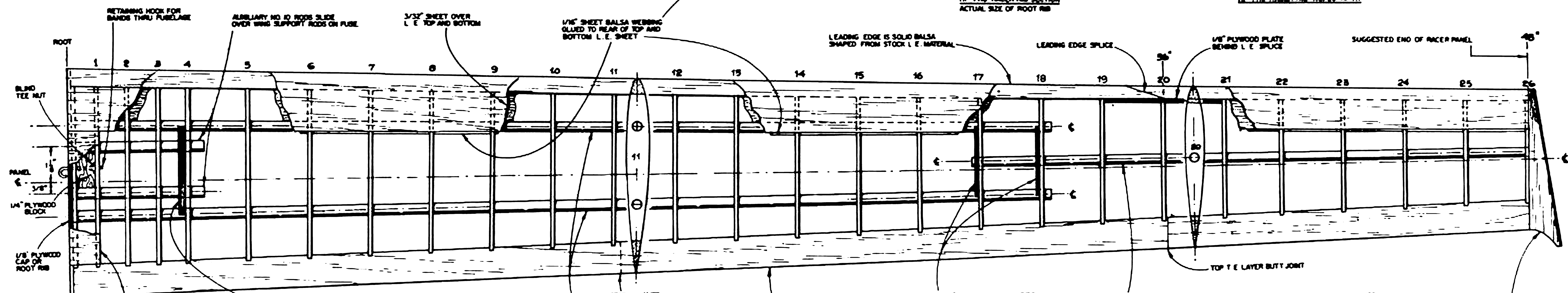
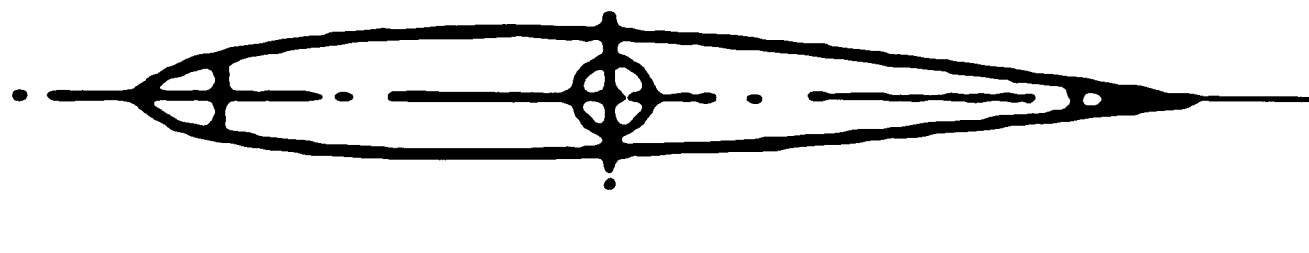
Thermal Soaring Wing Section



All ribs from 1/8" balsa



HI-Pro Racer Rib No. 26 at tip



HI-PRO CUSTOM SOARER
 DESIGNED BY HARVEY MICHAELS (LSF) RFD
 SPAN 117" WT.

TRACED FOR AMERICAN MODELER BY MARK CLARK