

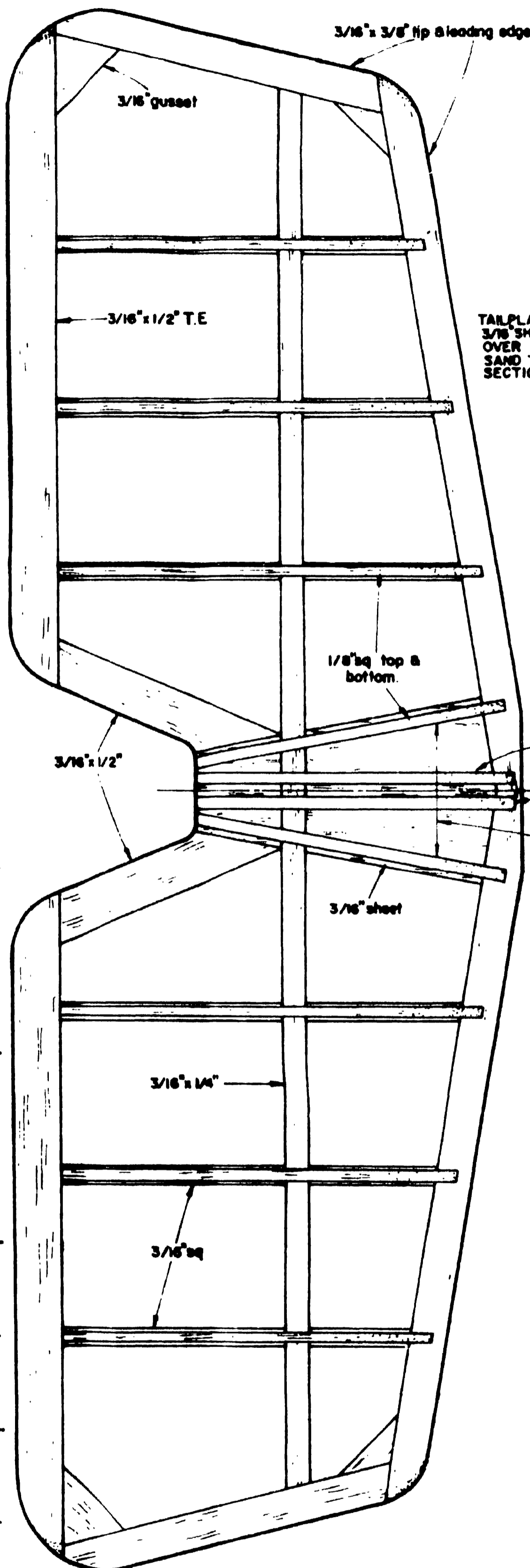
48" span, Semi-Scale biplane for Single Channel Radio Control. For 1.5cc (0.9c) engines, APS code F.

WARRIOR.
DESIGNED BY
D. Boddington.
COPYRIGHT OF
THE RCM & E. PLANS SERVICE.
13-35 BRIDGE STREET, HEMEL HEMPSTEAD, HERTS.
ALL WOODS Balsa UNLESS OTHERWISE STATED.

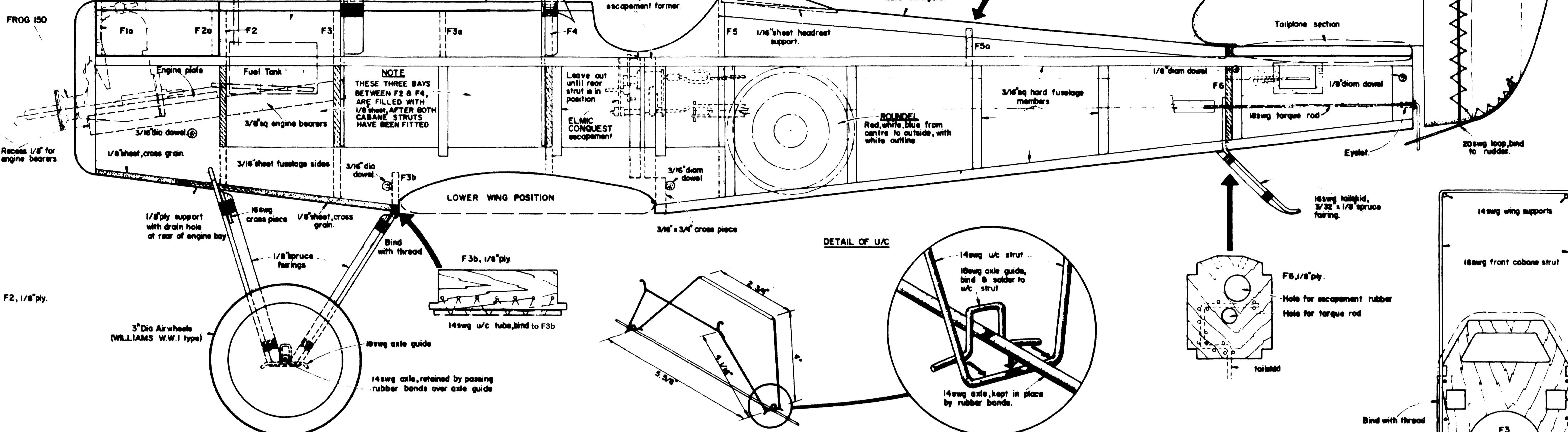
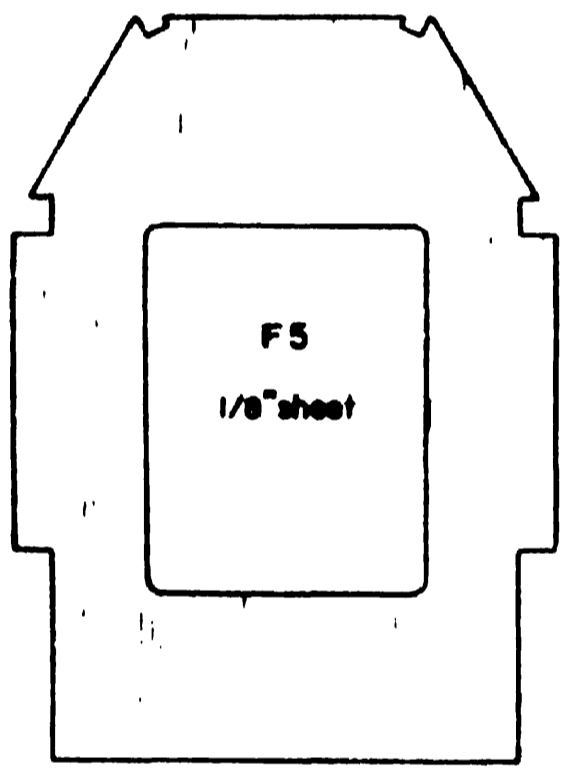
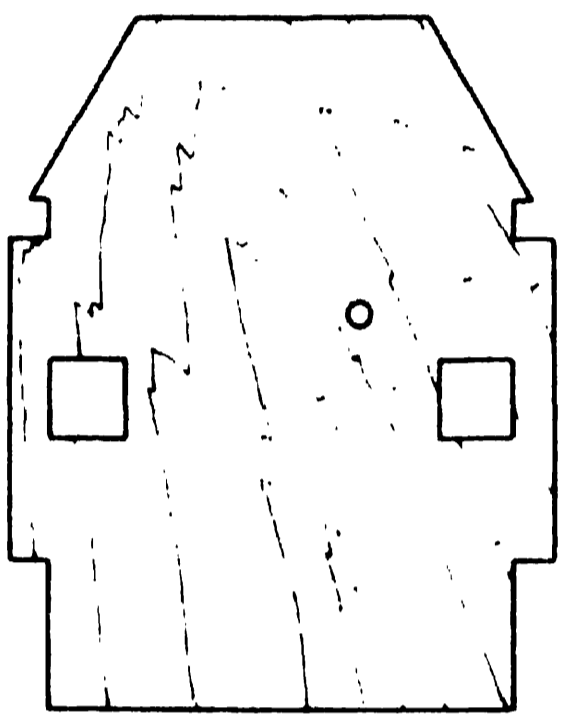
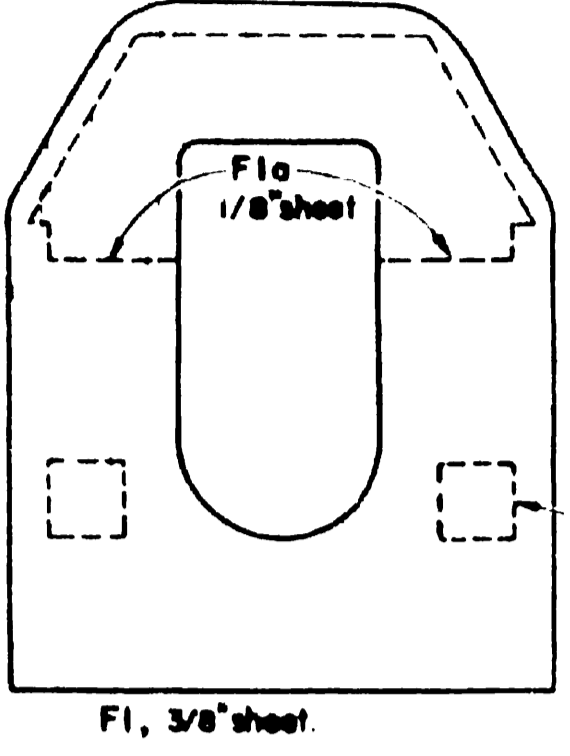
MATERIAL LIST

| | | |
|-----------------------------------|--------------------------------------|---------------------------------|
| 1 sheet 1/8" x 4" x 36" med balsa | 4 strips 1/2" x 1/2" x 36" med balsa | 6" of 1/8" dia dowel |
| 3/32" x 4" x 12" | Scrap block, soft, for headrest | 12" x 3/8" |
| 1/8" x 4" x 36" | 1 piece 1/8" x 6" x 8" plywood | 36' of 20swg piano wire |
| 3/16" x 3" x 36" | 1 1/8" x 6" x 12" | 18 18swg " |
| 1/4" x 3" x 36" | 1 1/8" x 3/8" x 8" spruce | 45' 16swg " |
| 3/8" x 3" x 4" | 2 1/8" x 1/4" x 36" | 48' 14swg " |
| 3 strips 1/8" x 1/8" x 36" | 1 3/8" x 3/8" x 12" beech | 3' 14swg tubing, brass or Dural |
| 14 3/16" x 3/16" x 36" | 1 1/8" x 5" x 3" paxolin | 1 pair 3" dia Airwheels |

Complimentary to WARRIOR is RED KNIGHT, a semi-scale German type Aircraft, PLAN No. RC 949, Price 7/6
BUILD THE TWO FOR AERIAL COMBAT



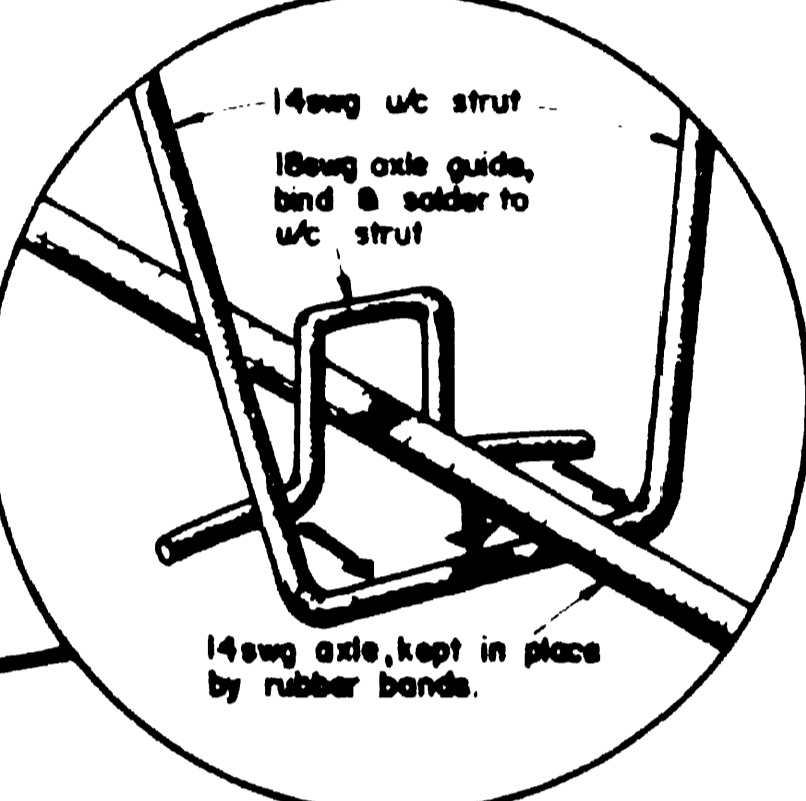
NOTE
TAILPLANE MADE FROM 3/16" SHEET WITH 1/8" sq OVER 3/16" RIBS. THE SAND TO SYMMETRICAL SECTION (SEE FUELLAGE)



NOTE
THESE THREE BAYS BETWEEN F2 & F4, ARE FILLED WITH 1/8" SHEET AFTER BOTH CABANE STRUTS HAVE BEEN FITTED

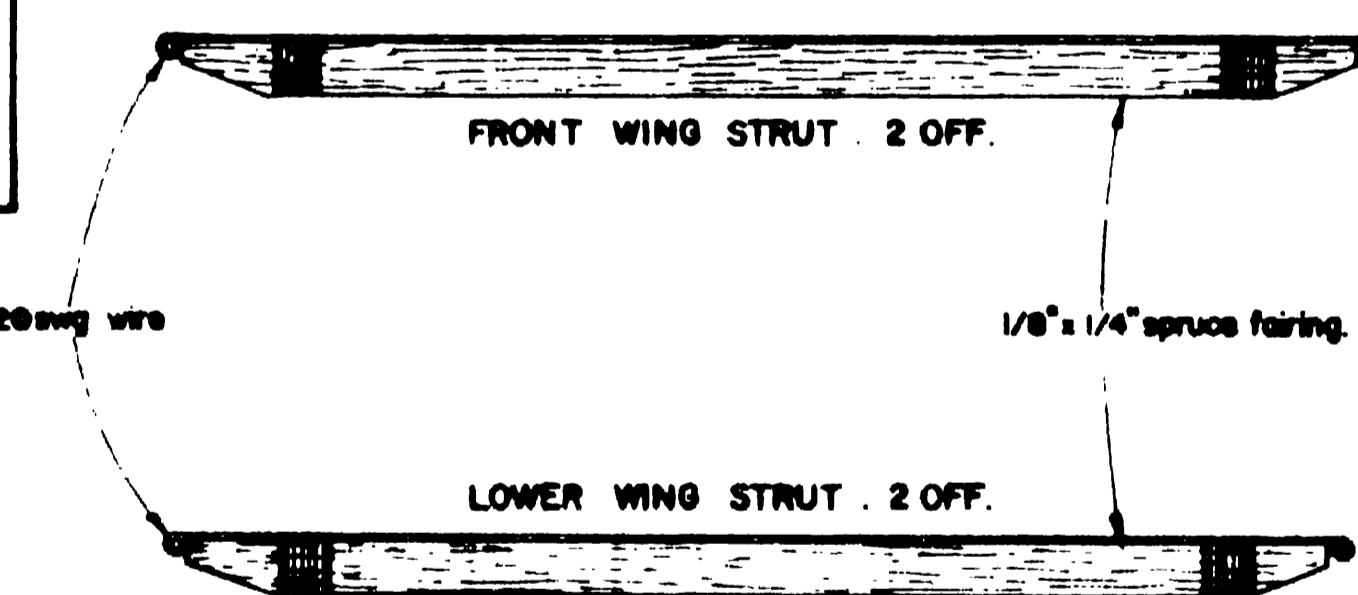
Leave out until rear strut is in position
ELMIC CONQUEST escapement
ROUND Red, white, blue from centre to outside, with white outline

DETAIL OF U/C



COLOUR SCHEME

| | |
|---------------------------------------|--|
| DIRTY CREAM | Top surfaces of both wings & tailplane, fuselage & fin |
| DIRTY CREAM | All undersides of wings & tailplane. |
| VARNISHED WOOD | All centre section struts & all interplane struts |
| Other colour schemes in PROFILE No.1. | |



ROOT RIB TEMPLATE
PLACE AGAINST W2 TO ENSURE CORRECT RIB ANGLE.

