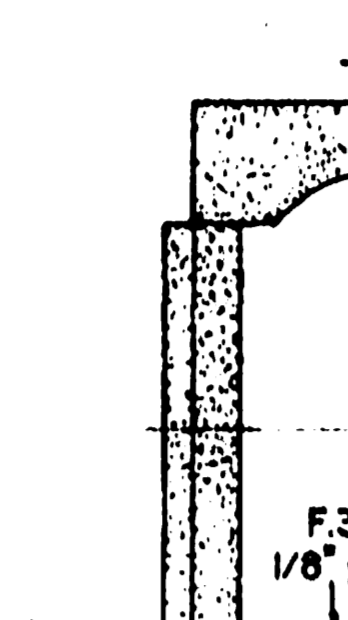
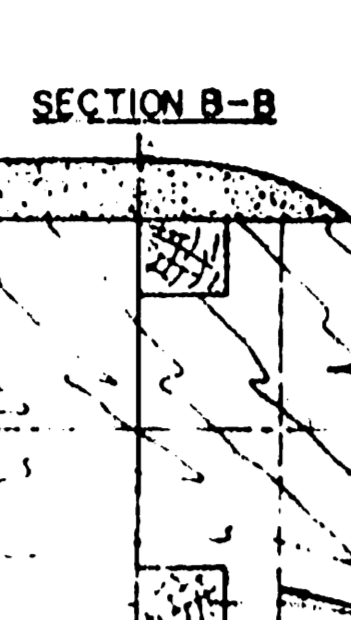
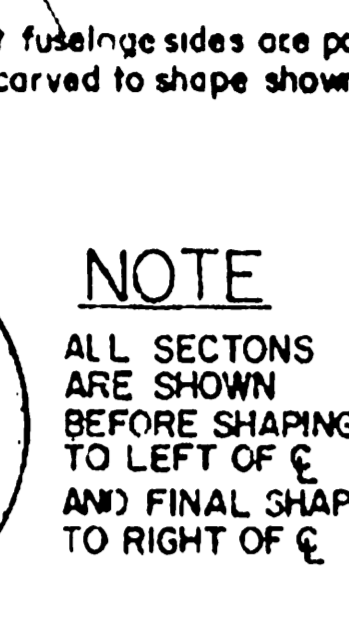
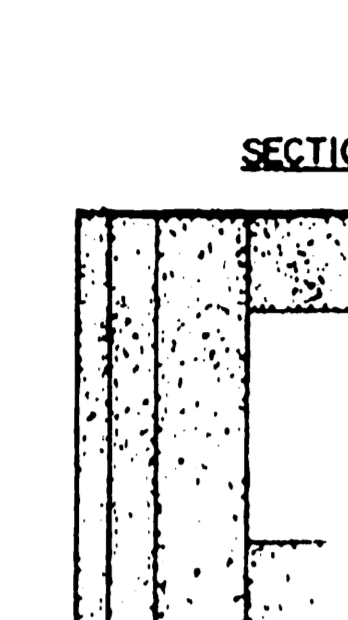
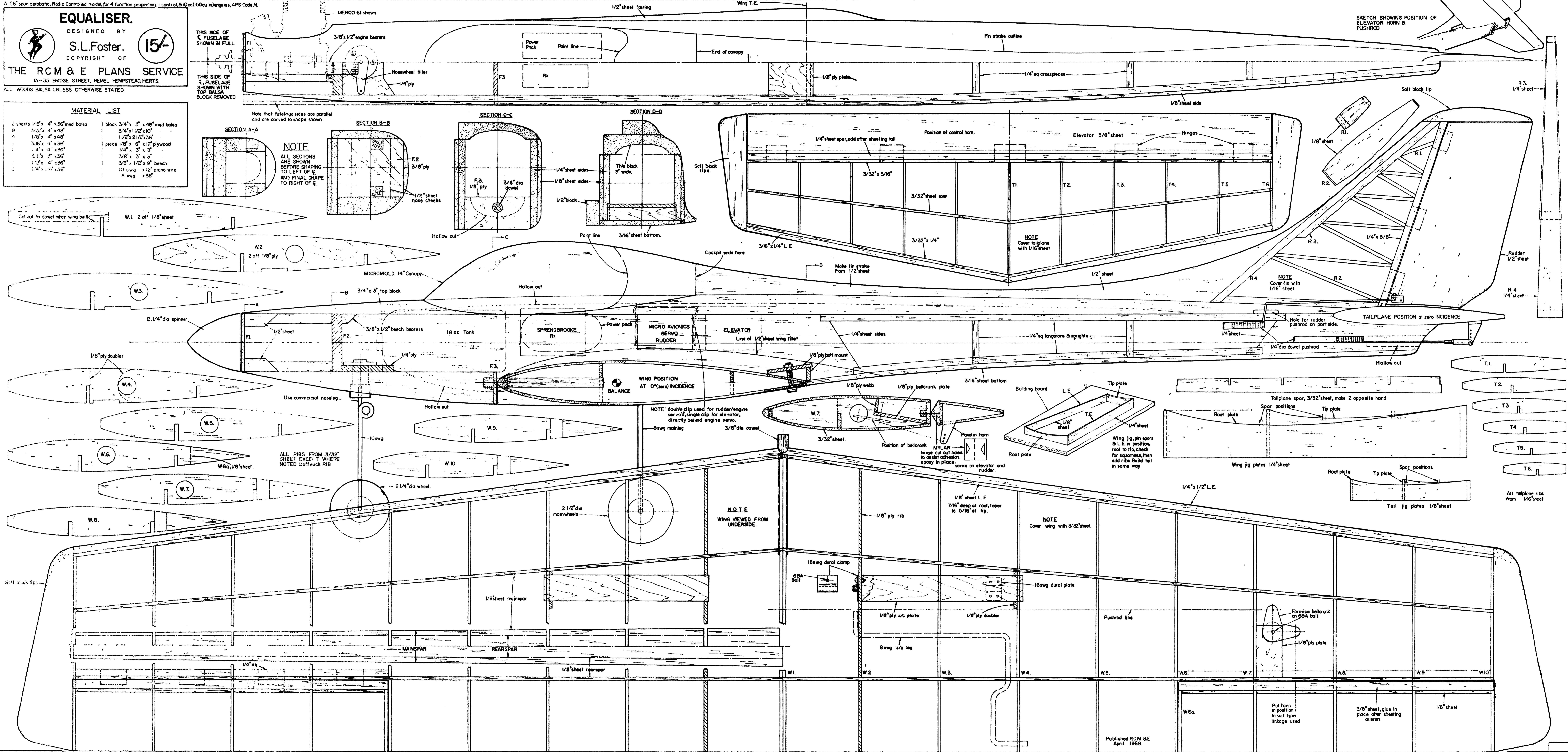


**EQUALISER.**  
 DESIGNED BY  
**S.L.Foster.**  
 COPYRIGHT OF  
**THE RCM & E PLANS SERVICE**  
 13-35 BRIDGE STREET, HEMEL HEMPSTEAD, HERTS.  
 ALL WOODS Balsa UNLESS OTHERWISE STATED

**MATERIAL LIST**

2 sheets 1/16" x 4" x 36" med balsa	1 block 3/4" x 3" x 48" med balsa
9 3/32" x 4" x 48"	3/4" x 1 1/2" x 10"
4 1/8" x 4" x 48"	1 1/2" x 2 1/2" x 36"
3 3/16" x 4" x 36"	1 piece 1/8" x 6" x 12" plywood
4 4" x 4" x 36"	1/4" x 3" x 3"
1 1/2" x 4" x 36"	3/8" x 3" x 3"
1 1/2" x 4" x 36"	3/8" x 1/2" x 9" beech
1 1/4" x 4" x 36"	10 swg x 12" piano wire
	8 swg x 36"



**NOTE**  
 ALL SECTIONS ARE SHOWN BEFORE SHAPING TO LEFT OF C AND FINAL SHAPE TO RIGHT OF C

THIS SIDE OF FUSELAGE SHOWN IN FULL

THIS SIDE OF FUSELAGE SHOWN WITH TOP Balsa BLOCK REMOVED

Note that fuselage sides are parallel and are carved to shape shown

W.1. 2 off 1/8" sheet

W.2. 2 off 1/8" ply

W.3.

W.4.

W.5.

W.6.

W.7.

W.8.

W.9.

W.10.

W.11.

W.12.

W.13.

W.14.

W.15.

W.16.

W.17.

W.18.

W.19.

W.20.

W.21.

W.22.

W.23.

W.24.

W.25.

W.26.

W.27.

W.28.

W.29.

W.30.

W.31.

W.32.

W.33.

W.34.

W.35.

W.36.

W.37.

W.38.

W.39.

W.40.

W.41.

W.42.

W.43.

W.44.

W.45.

W.46.

W.47.

W.48.

W.49.

W.50.

W.51.

W.52.

W.53.

W.54.

W.55.

W.56.

W.57.

W.58.

W.59.

W.60.

W.61.

W.62.

W.63.

W.64.

W.65.

W.66.

W.67.

W.68.

W.69.

W.70.

W.71.

W.72.

W.73.

W.74.

W.75.

W.76.

W.77.

W.78.

W.79.

W.80.

W.81.

W.82.

W.83.

W.84.

W.85.

W.86.

W.87.

W.88.

W.89.

W.90.

W.91.

W.92.

W.93.

W.94.

W.95.

W.96.

W.97.

W.98.

W.99.

W.100.

W.101.

W.102.

W.103.

W.104.

W.105.

W.106.

W.107.

W.108.

W.109.

W.110.

W.111.

W.112.

W.113.

W.114.

W.115.

W.116.

W.117.

W.118.

W.119.

W.120.

W.121.

W.122.

W.123.

W.124.

W.125.

W.126.

W.127.

W.128.

W.129.

W.130.

W.131.

W.132.

W.133.

W.134.

W.135.

W.136.

W.137.

W.138.

W.139.

W.140.

W.141.

W.142.

W.143.

W.144.

W.145.

W.146.

W.147.

W.148.

W.149.

W.150.

W.151.

W.152.

W.153.

W.154.

W.155.

W.156.

W.157.

W.158.

W.159.

W.160.

W.161.

W.162.

W.163.

W.164.

W.165.

W.166.

W.167.

W.168.

W.169.

W.170.

W.171.

W.172.

W.173.

W.174.

W.175.

W.176.

W.177.

W.178.

W.179.

W.180.

W.181.

W.182.

W.183.

W.184.

W.185.

W.186.

W.187.

W.188.

W.189.

W.190.

W.191.

W.192.

W.193.

W.194.

W.195.

W.196.

W.197.

W.198.

W.199.

W.200.

W.201.

W.202.

W.203.

W.204.

W.205.

W.206.

W.207.

W.208.

W.209.

W.210.

W.211.

W.212.

W.213.

W.214.

W.215.

W.216.

W.217.

W.218.

W.219.

W.220.

W.221.

W.222.

W.223.

W.224.

W.225.

W.226.

W.227.

W.228.

W.229.

W.230.

W.231.

W.232.

W.233.

W.234.

W.235.

W.236.

W.237.

W.238.

W.239.

W.240.

W.241.

W.242.

W.243.

W.244.

W.245.

W.246.

W.247.

W.248.

W.249.

W.250.

W.251.

W.252.

W.253.

W.254