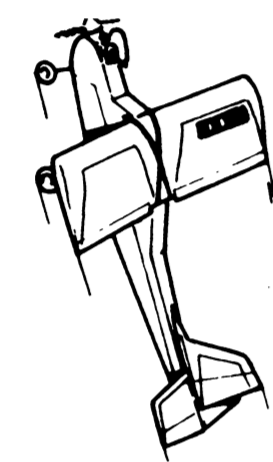
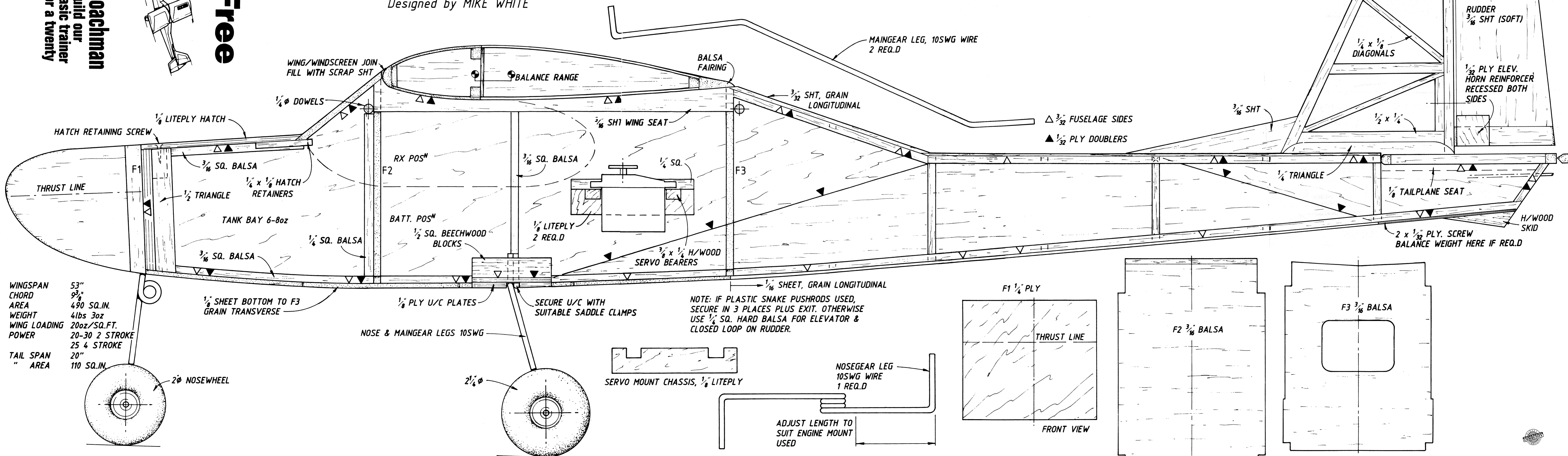


Coachman
Build our basic trainer for a twenty



Free

Designed by MIKE WHITE



WINGSPAN 53"
CHORD 9 3/8"
AREA 490 SQ. IN.
WEIGHT 4lbs 3oz
WING LOADING 20oz/SQ. FT.
POWER 20-30 2 STROKE
25 4 STROKE
TAIL SPAN 20"
AREA 110 SQ. IN.

NOTE: IF PLASTIC SNAKE PUSHRODS USED, SECURE IN 3 PLACES PLUS EXIT. OTHERWISE USE 1/4 SQ. HARD Balsa FOR ELEVATOR & CLOSED LOOP ON RUDDER.



4" WIDE SURGICAL BANDAGE EACH SIDE AROUND CENTRE SECTION TOP & BOTTOM, OVERLAP 1" ON EACH WING PANEL

