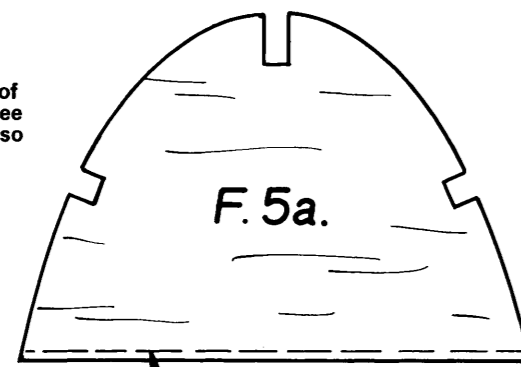
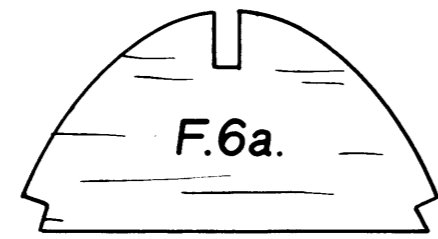


Possible variations of design include addition of complete ply formers (See F.11) at stress points. Also hardwood strip for tow-hook attachment.

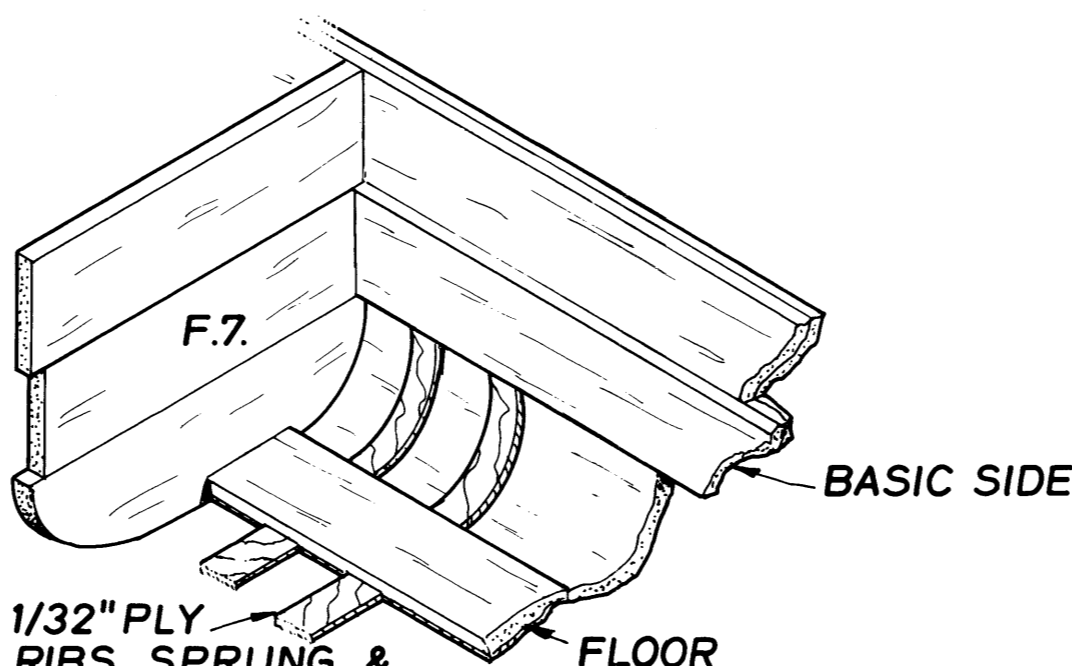


CHAMFER



On all formers except F.1 cut lower parts of formers from sheet trimmed to 1/16 in. width and 1/16 in. less in length than corresponding crutch member.

ALL SHEETING IS 2 LAYERS
1/16" & 1 x 1/32"

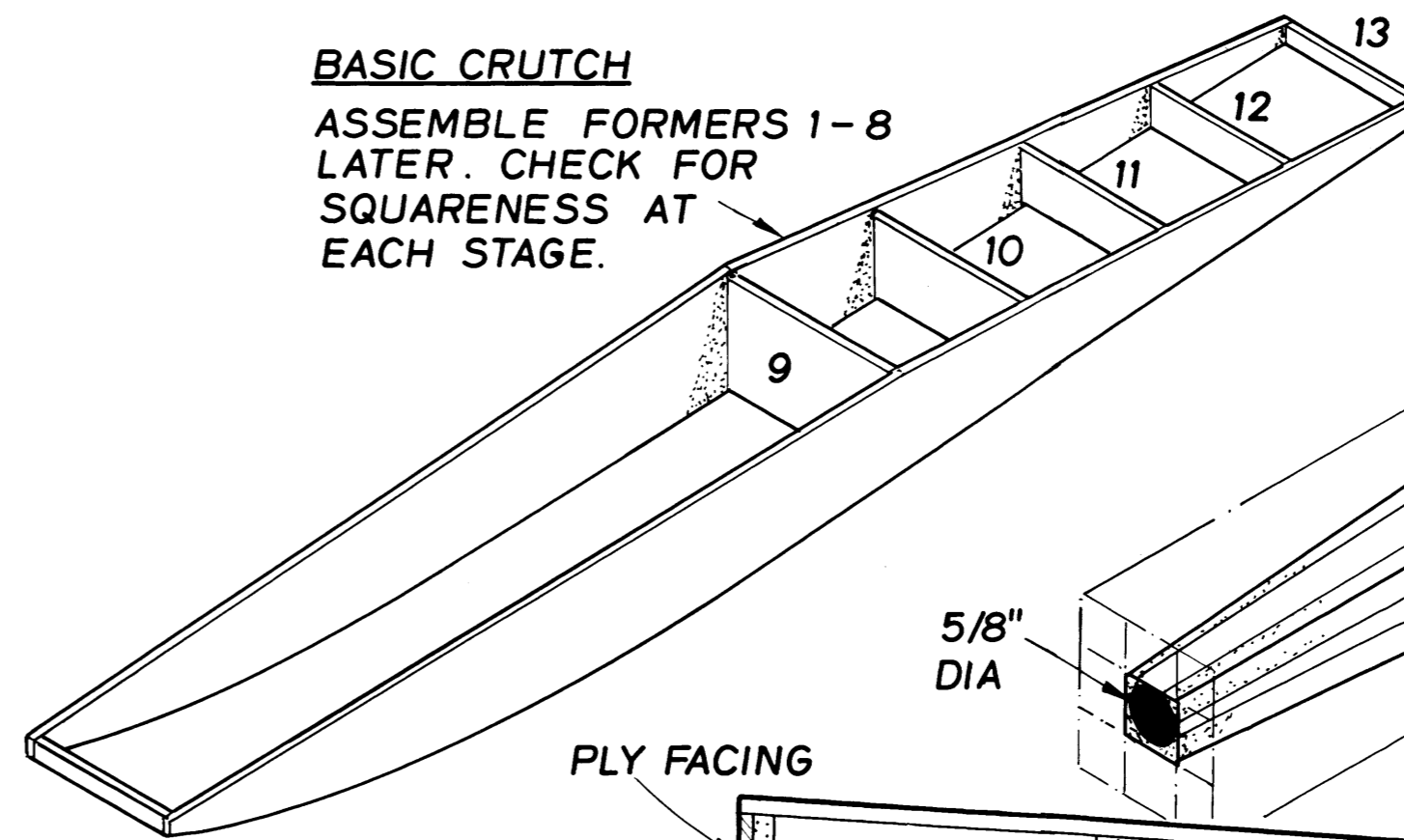


BASIC SIDE

1/32" PLY RIBS SPRUNG & GLUED IN PLACE AS REQUIRED

BASIC CRUTCH

ASSEMBLE FORMERS 1-8 LATER. CHECK FOR SQUARENESS AT EACH STAGE.

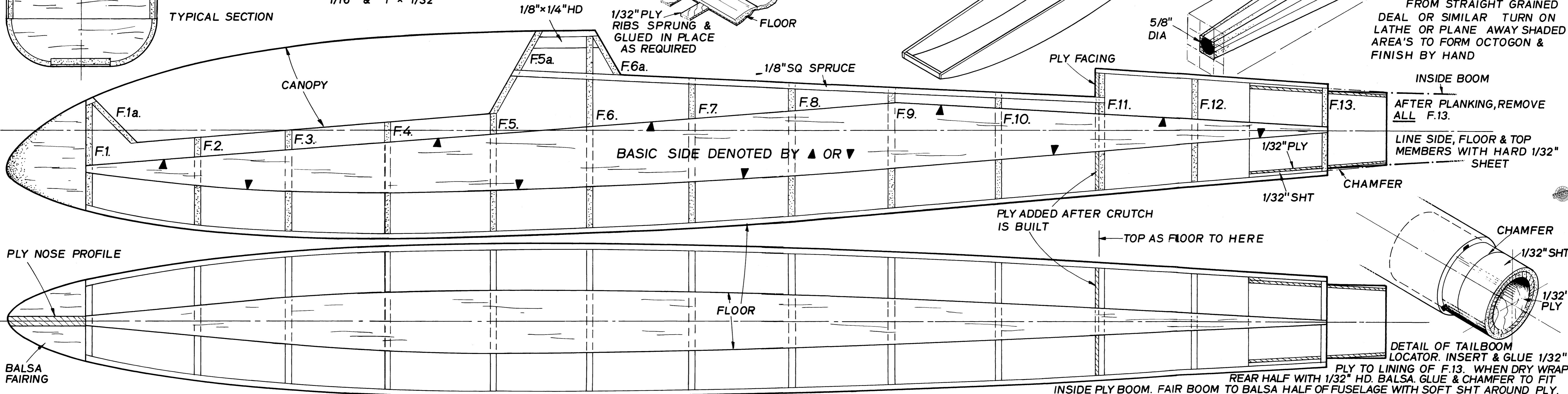


Boom 1/32nd in. (.8mm), soak in hot water until pliable. Wrap around waxed former and secure with crepe bandage. Allow to dry. Prepare chamfered lap joint. Glue and re-bandage until set.

Original boom 25 in. length from F.13 rear.

BOOM BLANK

30" x 15/8" SQ. MAKE FROM STRAIGHT GRAINED DEAL OR SIMILAR TURN ON LATHE OR PLANE AWAY SHADED AREA'S TO FORM OCTOGON & FINISH BY HAND



TYPICAL SECTION

CANOPY

1/8" x 1/4" HD

1/8" SQ SPRUCE

PLY FACING

5/8" DIA

INSIDE BOOM

AFTER PLANKING, REMOVE ALL F.13.

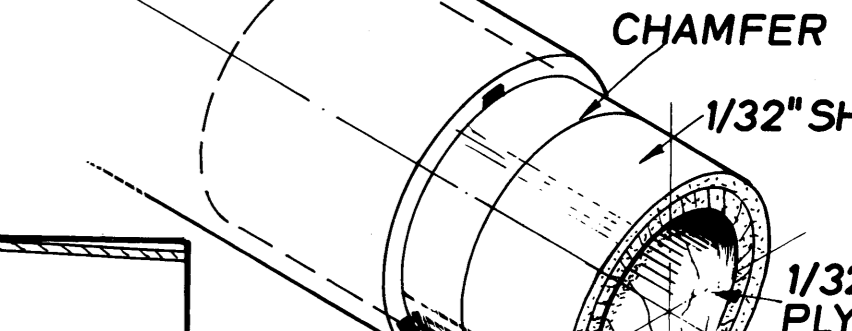
LINE SIDE, FLOOR & TOP MEMBERS WITH HARD 1/32" SHEET

BASIC SIDE DENOTED BY ▲ OR ▼

PLY ADDED AFTER CRUTCH IS BUILT

TOP AS FLOOR TO HERE

FLOOR

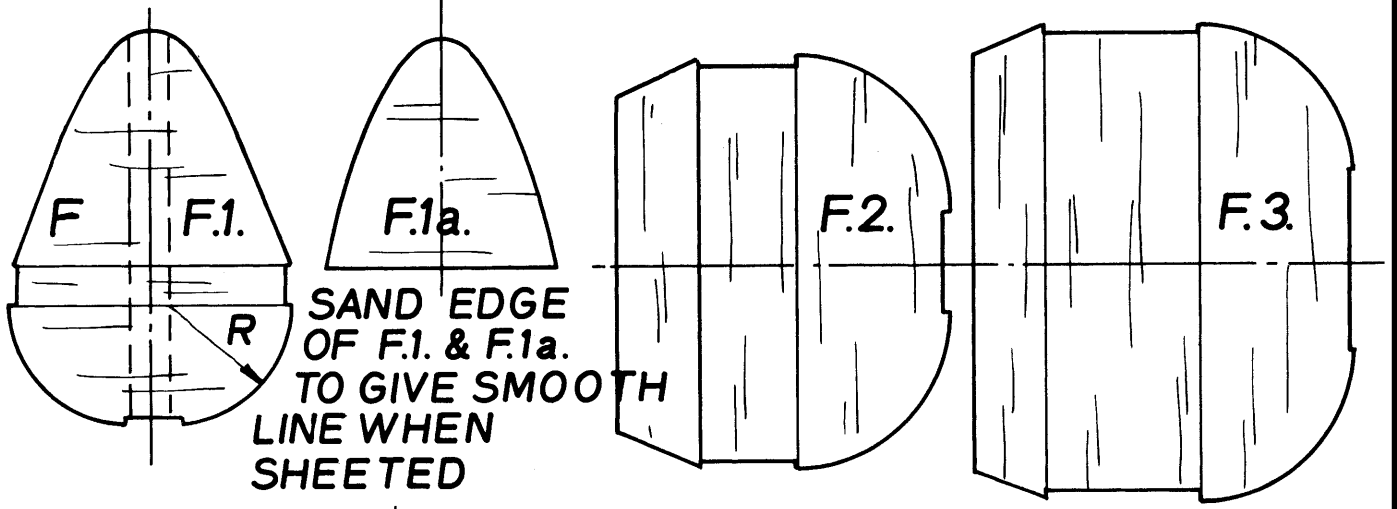


DETAIL OF TAILBOOM LOCATOR. INSERT & GLUE 1/32" PLY TO LINING OF F.13. WHEN DRY WRAP REAR HALF WITH 1/32" HD. Balsa. GLUE & CHAMFER TO FIT

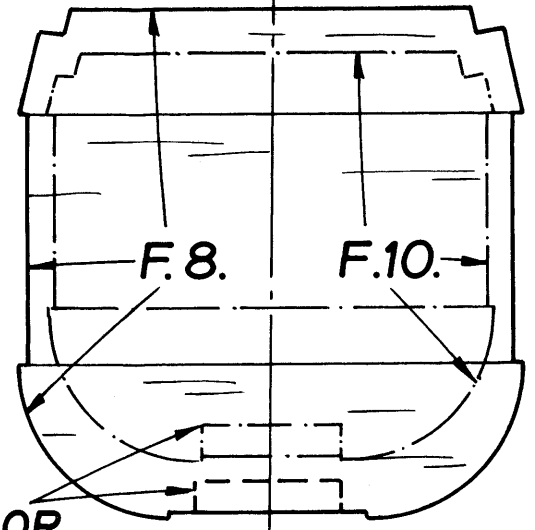
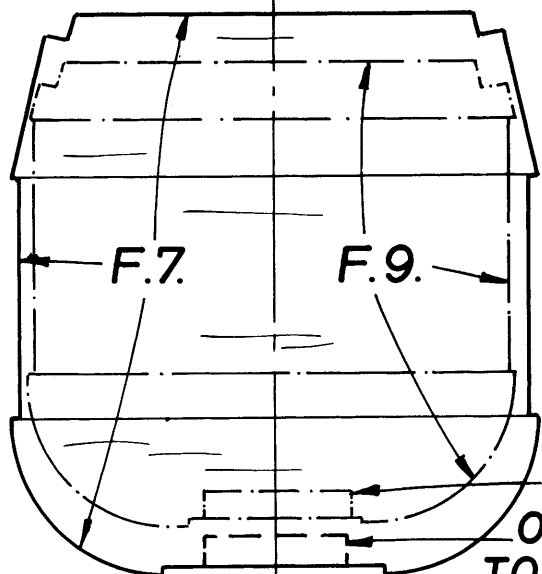
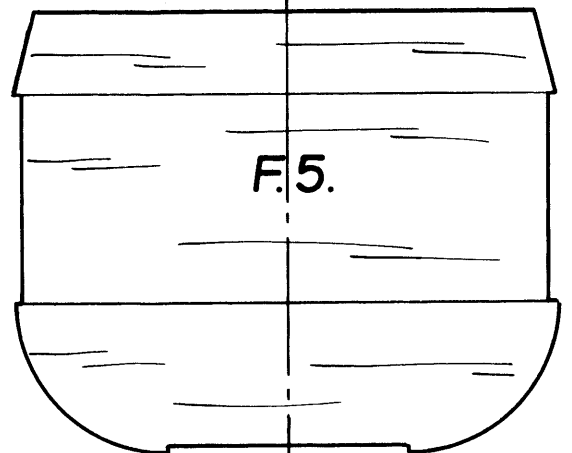
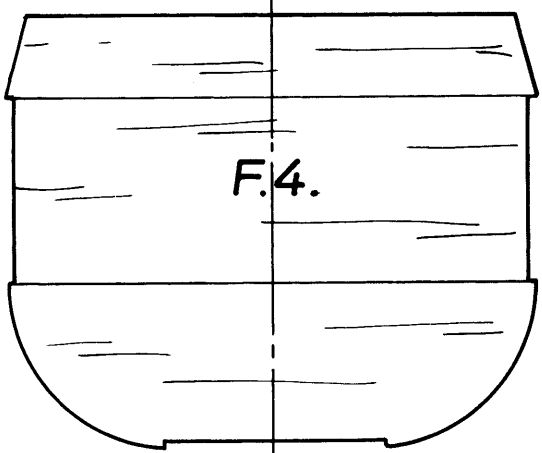
INSIDE PLY BOOM. FAIR BOOM TO Balsa HALF OF FUSELAGE WITH SOFT SHT AROUND PLY.

PLY NOSE PROFILE

Balsa FAIRING



**SAND EDGE
OF F.1. & F.1a.
TO GIVE SMOOTH
LINE WHEN
SHEETED**



**CUT
OUT FOR
TOW HOOK STRIP SHOWN
DOTTED**

