

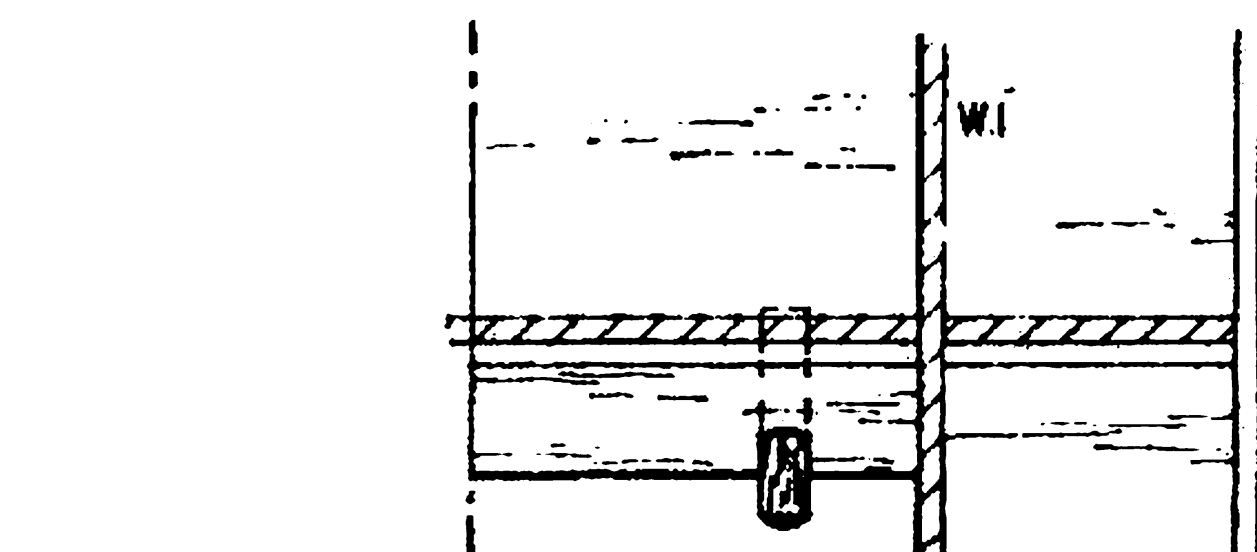
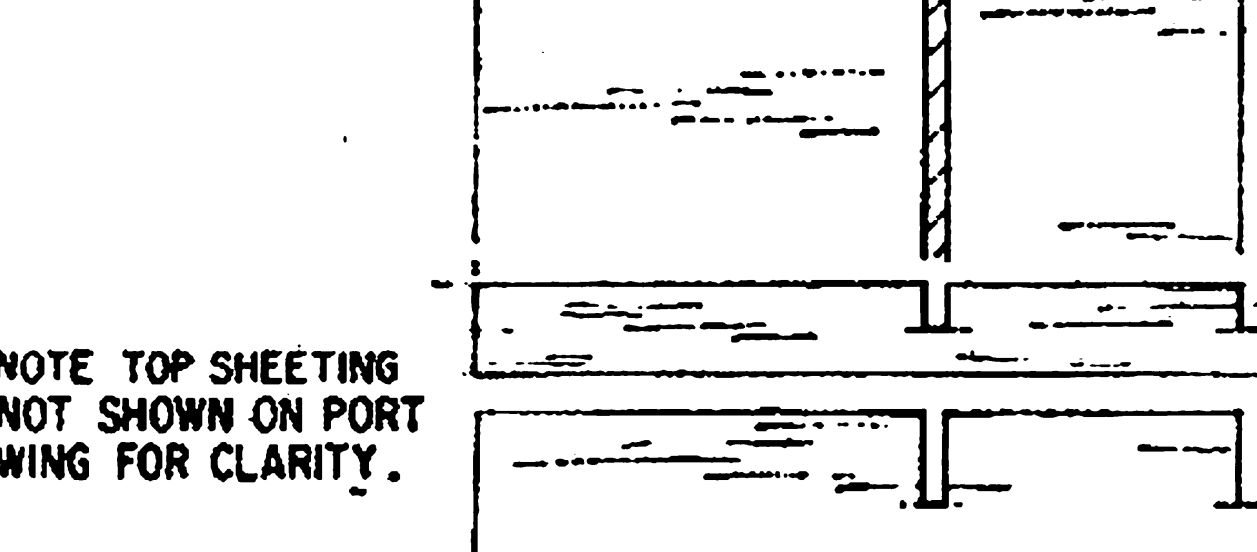
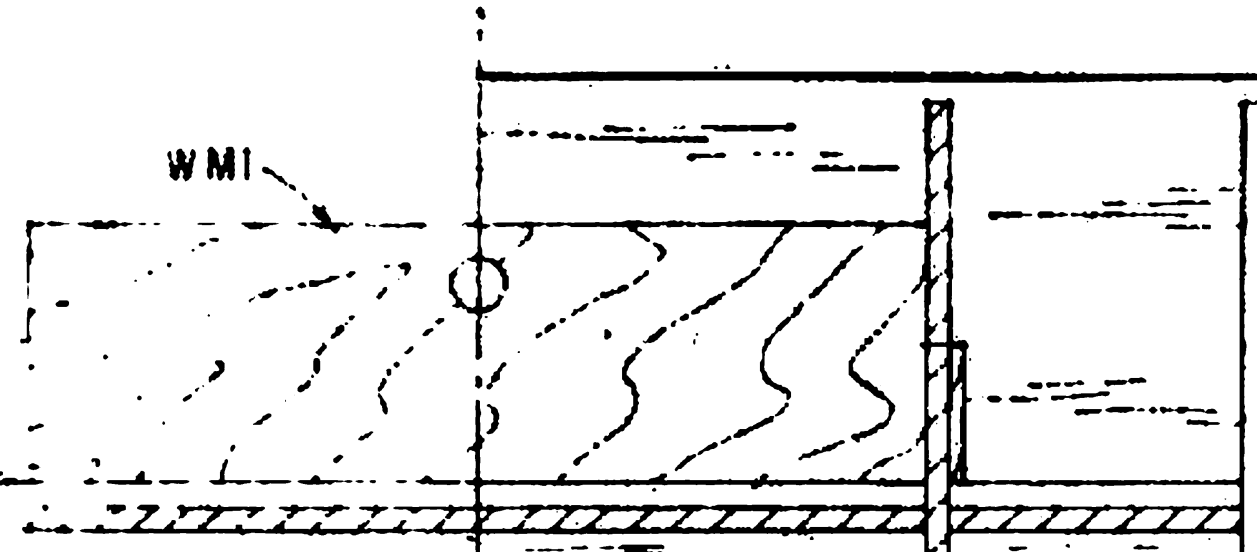
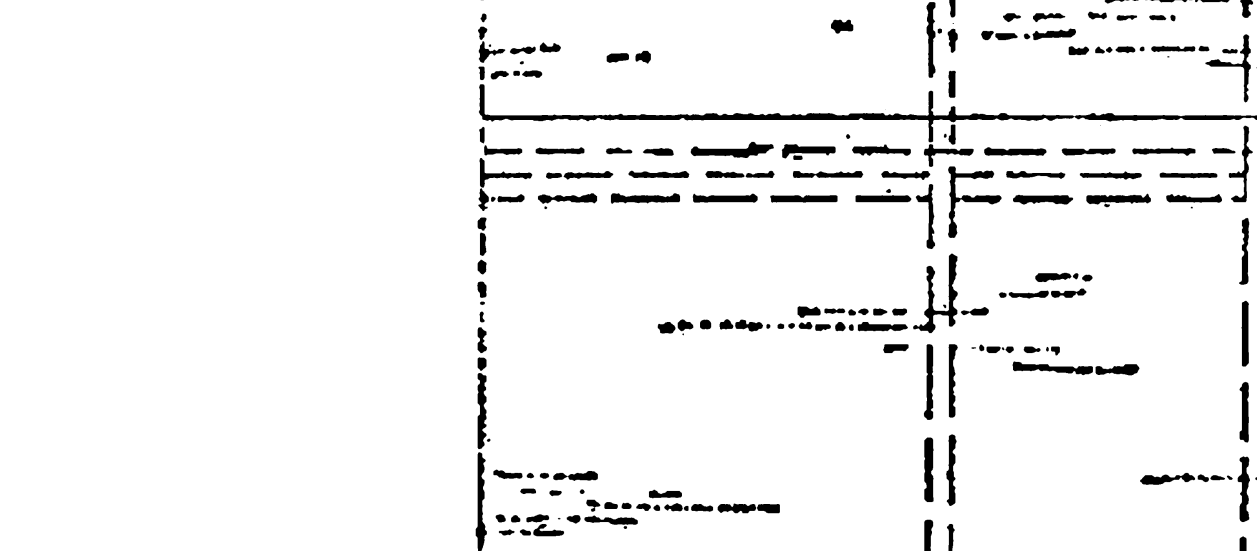
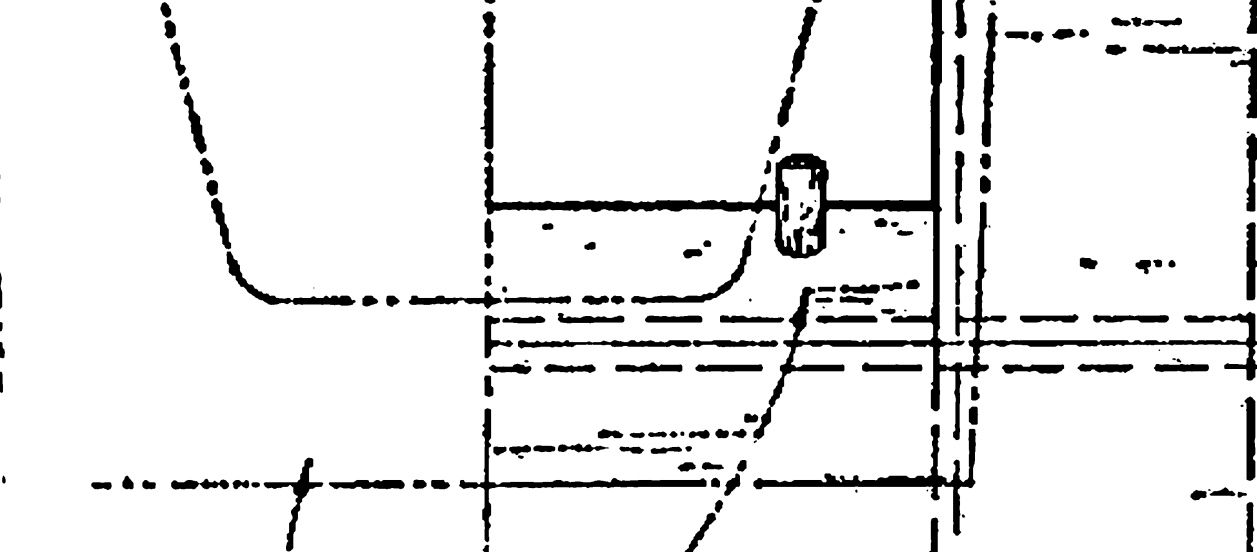
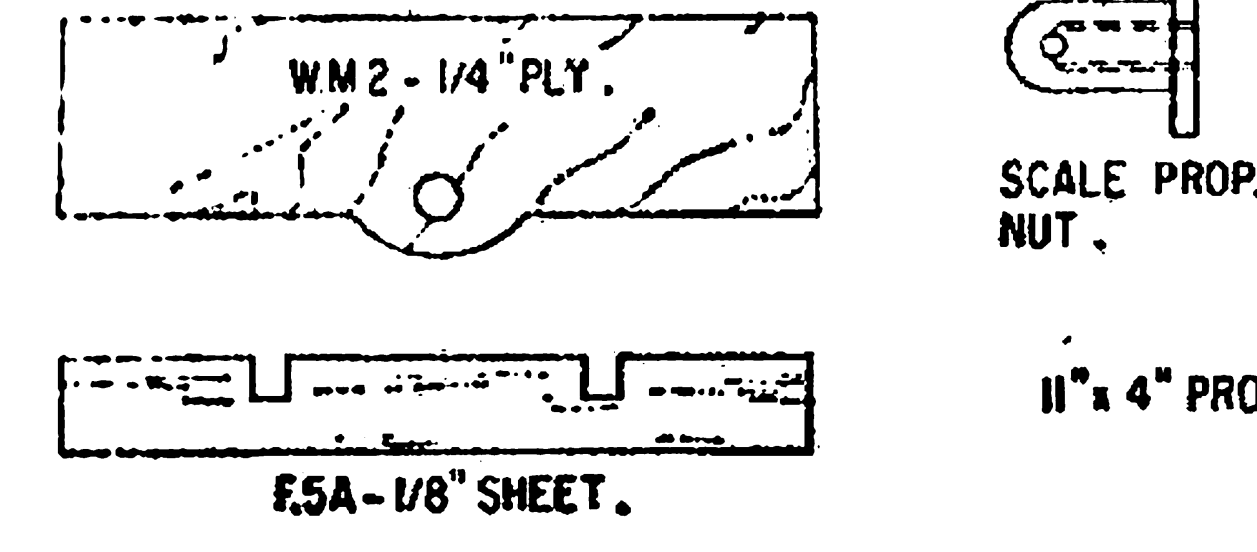
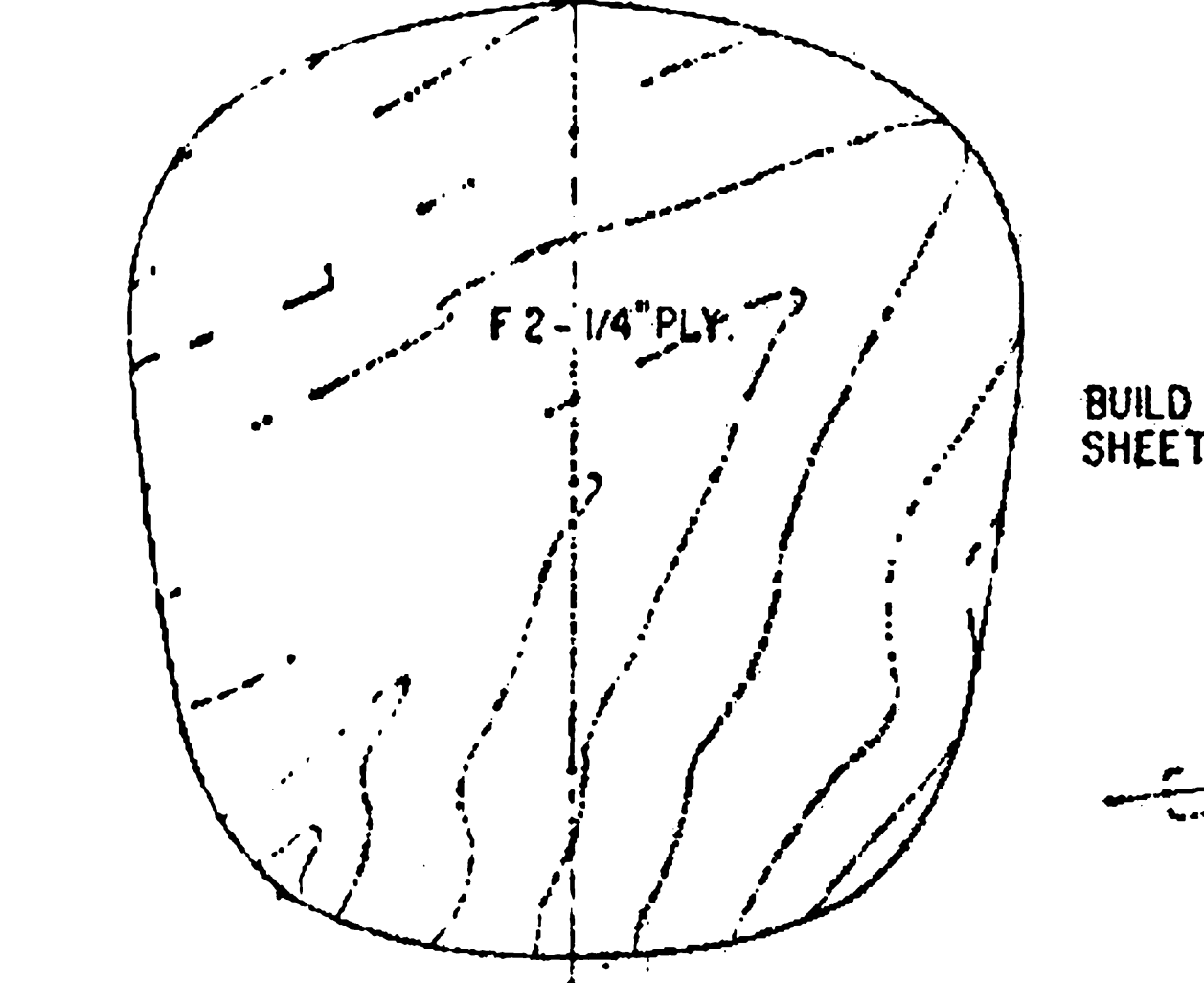
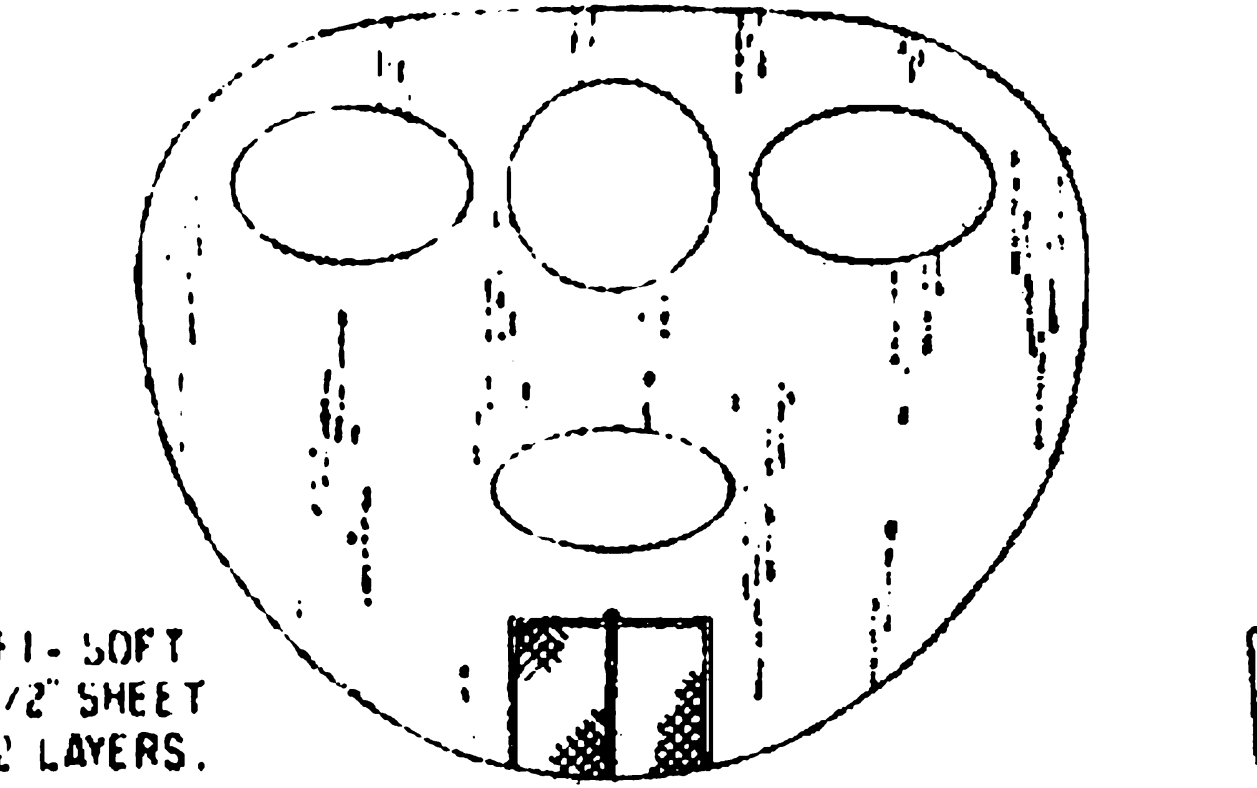
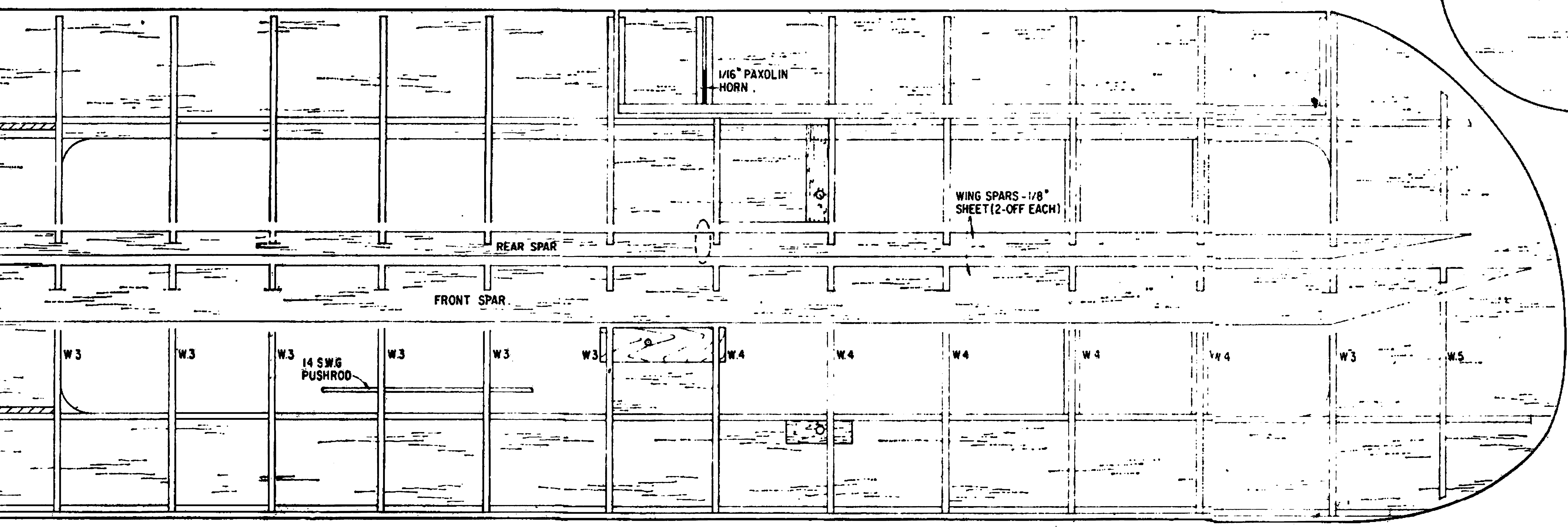
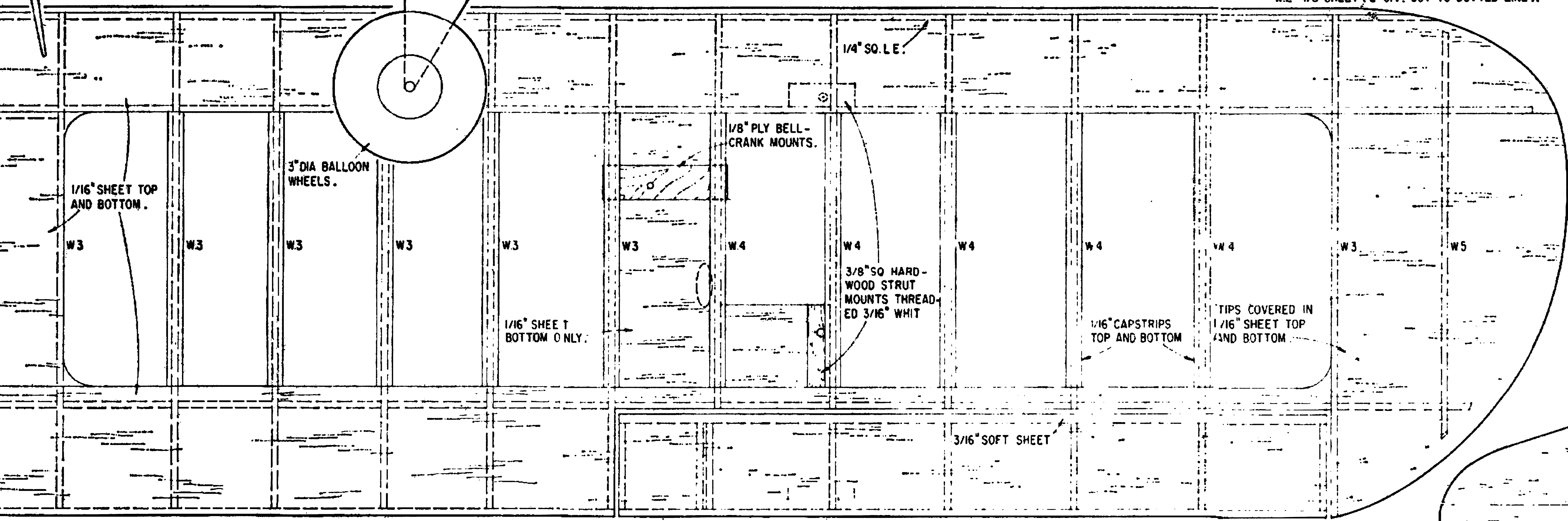
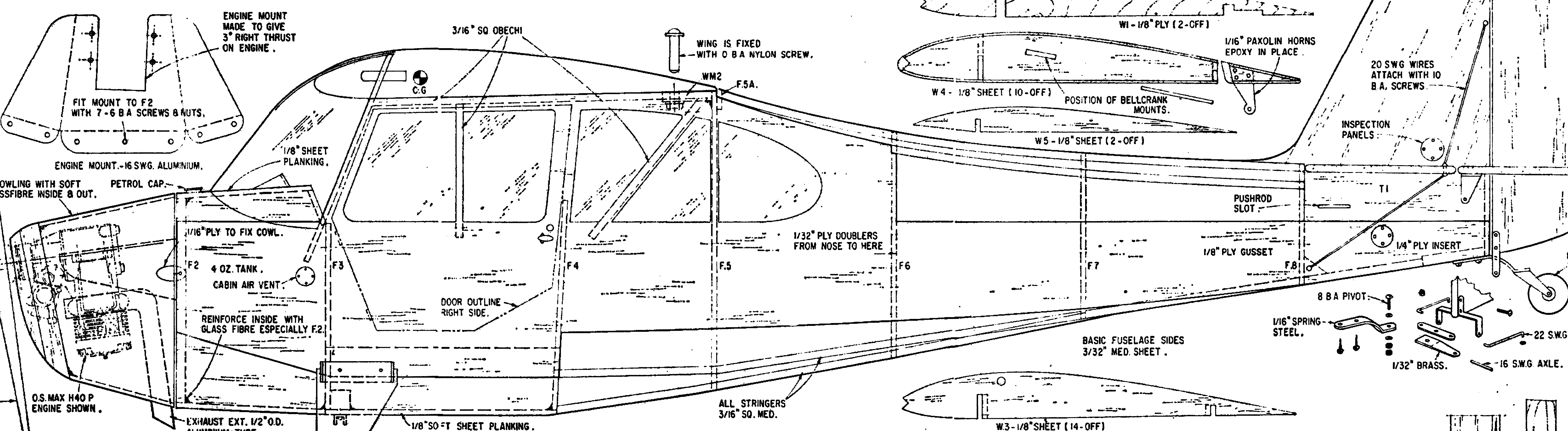
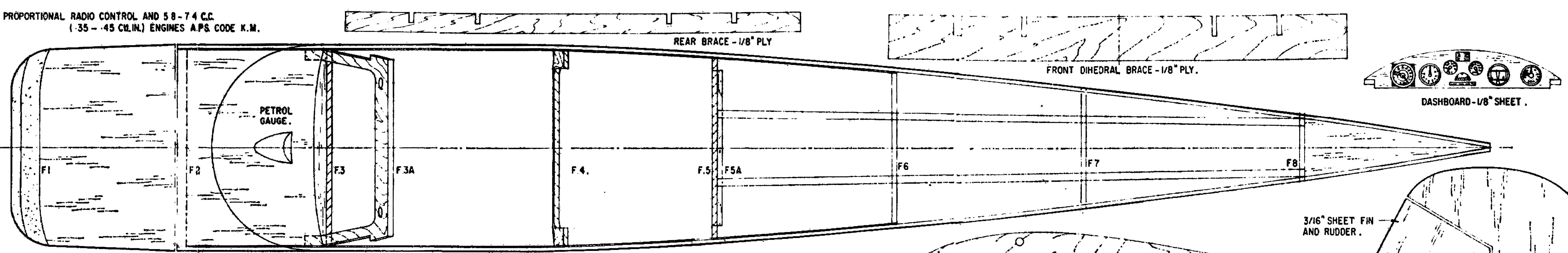
4 7/8" SPAN FULLY AEROBATIC SCALE MODEL FOR 4 FUNCTION PROPORTIONAL RADIO CONTROL AND 5.8-7.4 C.C.  
(.35 - .45 CU. IN.) ENGINES A.P.S. CODE K.M.

**AERONCA CHAMPION**  
designed by  
**D. Stothers.** £1  
The R.C.M.&E. Plans Service  
13-35 Bridge Street, Hemel Hempstead, Herts.

NOTE ALL WOODS Balsa UNLESS OTHERWISE STATED.

**BASIC MATERIALS LIST**

8 LGTHS 1/16" x 3/32" x 3/16" MED SHEET Balsa	1 PCE 1/8" x 1/2" x 1/2" PLYWOOD.
4 3/32" x 1/4" x 3/16"	1 1/8" x 6" x 6"
5 1/8" x 4" x 3/16"	1 1/4" x 8" x 8"
1 3/16" x 3/16" SOFT	1 1/4" x 7" x 10" CELLULOID SHEET
1 3/16" x 3/16" MED	1 1/4" x 10" THIN ALUM.
1 3/16" x 3/16" HARD	2 LGTH 8 SWG x 3/16" PLANO WIRE
2 3/16" x 3/16" x 3/16" MED STRIP	1 14 SWG x 3/16"
1 1/4" x 1/4" x 3/16" SHEET	4 1/4" DIA x 22" ALUM. TUBE.
1 PCE 1/32" x 1/5" x 1/8" PLYWOOD	1 1/4" DIA 8"
1 1/8" x 2" x 2"	1 PCE 16 SWG x 4" x 7" ALUM. SHEET.



NOTE TOP SHEETING NOT SHOWN ON PORT WING FOR CLARITY.