

NOTE: REVERSE PLAN (TURN OVER) TO OBTAIN RIGHT WING PANEL

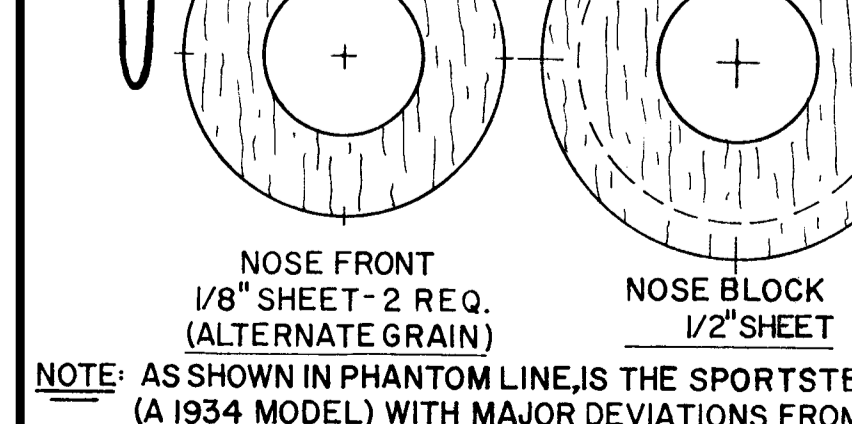
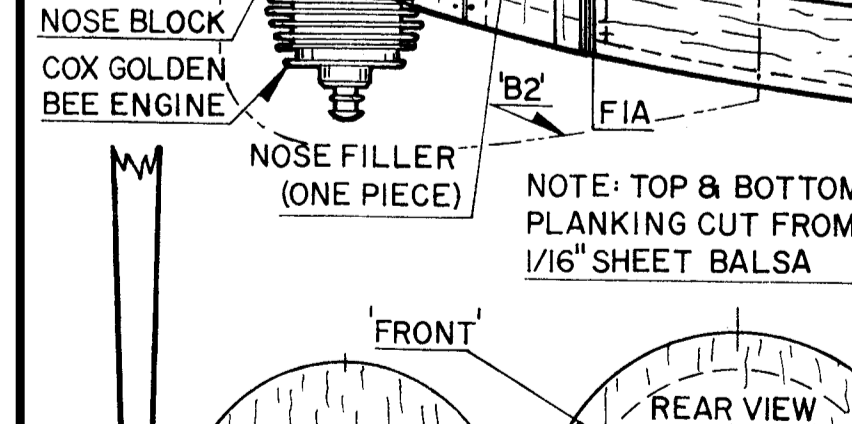
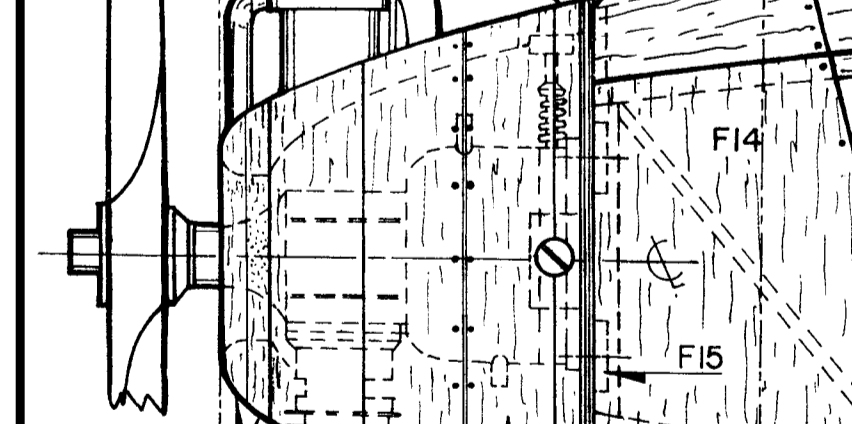
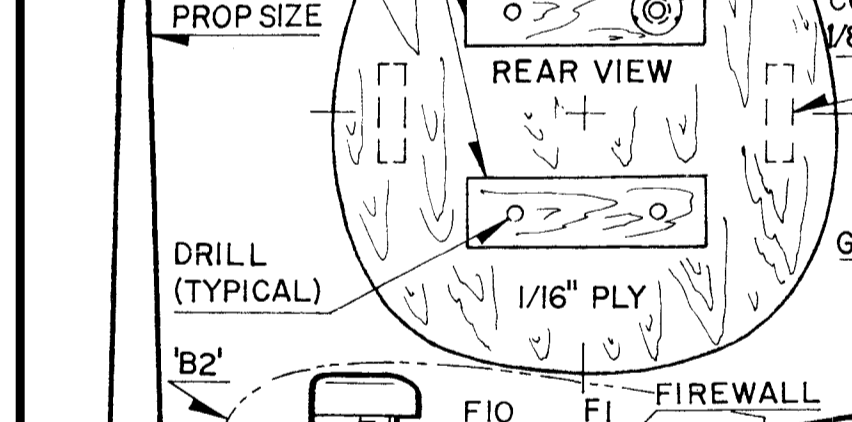
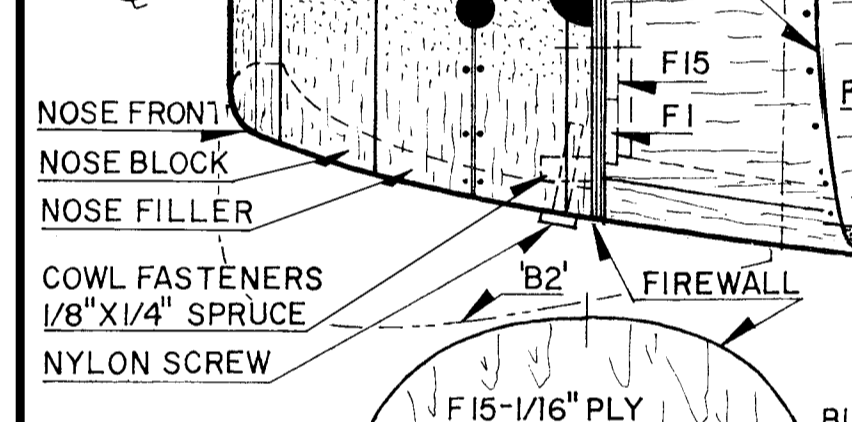
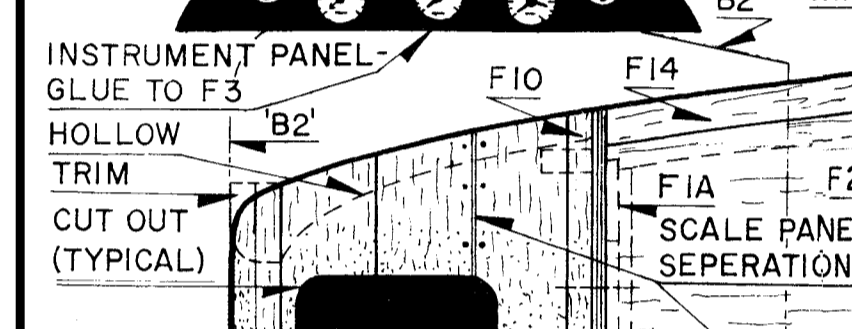
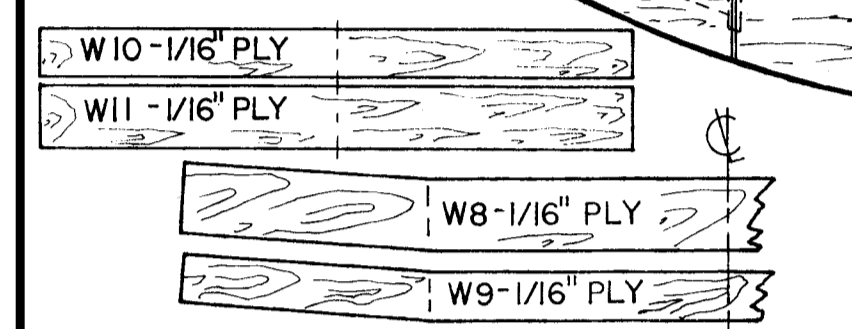
NOTE: ALL 'SCRAP' IS FROM 1/8" SHEET EXCEPT PITOT- MAKE FROM DOWEL & WIRE

NOTE: BLOCK IN WITH SCRAP 1/16" PLY AS PER SIDE VIEW & ZAP OR EPOXY TO WING BOTTOM BEFORE PLANKING

GEAR DETAIL

ORIGINAL WAS COVERED WITH SILKSPAN & DOPED-- KEEP MODEL LIGHT-WEIGHT W/ENGINE, BUT W/O RADIO-12 OZS.

WING DETAIL



NOTE: AS SHOWN IN PHANTOM LINE, IS THE SPORTSTER 'B2', (A 1934 MODEL) WITH MAJOR DEVIATIONS FROM MODEL 'K' AS

THIS END SLIP-FITS UNDER ROBOARD HINGE AT FUSELAGE

THIS END PINS TO 1/16" ALUM. TUBING INDICATED BY 'X' ON FRONT VIEW

AUTHENTIC KINNER K5 ENGINE CYLINDERS ARE SHOWN IN FRONT & SIDE VIEWS, WITHOUT COOLING FINS-- BUILD SAME OR SUBSTITUTE WILLIAMS BROS. WRIGHT J5 CYLINDERS IN 1" SCALE-- FOR KINNER EFFECT, FACE ROCKER ARM COVERS TOWARD THE REAR-- MODEL POWERED BY COX .049 GOLDEN BEE ENGINE W/THROTTLE

COLOR SCHEME: FUSELAGE--FIN & RUDDER--STRUTS, (WING & GEAR) ARE LIGHT BLUE--- WING--STAB & ELEVATOR ARE CREAM---DETAILS ARE BLACK

MAKE CORRUGATED CARDBOARD TEMPLATE TO INSIDE DIMENSION-- WET STRIPS, PIN IN POSITION WITH OVER-SIZE LENGTH, & GLUE-- TRIM WHEN DRY-- SAME FOR WING TIPS

USE WHITE GLUE FOR ABOVE

TAIL BLOCK-- 1" X 3" Balsa

PLANKING FROM 1/16" SHEET (TYPICAL)

SECTION AT F3

LONGERONS, UPRIGHTS, 1/16" X 1/8" STRINGERS, 1/16" X 3/16" STRINGERS, COVERING (FRONT VIEW), F13, F12-DRILL, F3A

NOTE: F16'S (2 PCS) ARE PART OF THE FUSELAGE SIDE IN CONSTRUCTION

SAW TO OUTSIDE & INSIDE DEMENSION, THEN TAPER TO 'FRONT' FOR ACCURACY-- SAME FOR NOSE BLOCK

FOLLOWS: ENGINE COWL, GEAR FAIRINGS & LESS WING AREA WITH INCREASED H.P. (100 ON K5 TO 125 ON B5 ENGINE) - THESE ADDITIONS LABELED AS 'B2' & OPTIONAL-- BALANCE OF BOTH AIRCRAFT IDENTICAL

THE 1932 **KINNER 'SPORTSTER'** MODEL K
 - SCALE - 1" = 1' -
 DESIGNED BY: HURST G. BOWERS
 PLANS & ENGINEERING: HERB CLUKEY
 FOR RADIO CONTROL - 2 TO 4 CHANNELS
 SPAN: 39" - LENGTH: 24 1/8" - WEIGHT: 17 OZS. (4 CH.)
FLYLINE MODELS
 10643 ASHBY PL. FAIRFAX, VA. 22030

KINNER AIRPLANE & MOTOR CORPORATION
 Glendale, Calif.
 SPORTSTER - 2 PLACE
 ENGINE: KINNER K-5