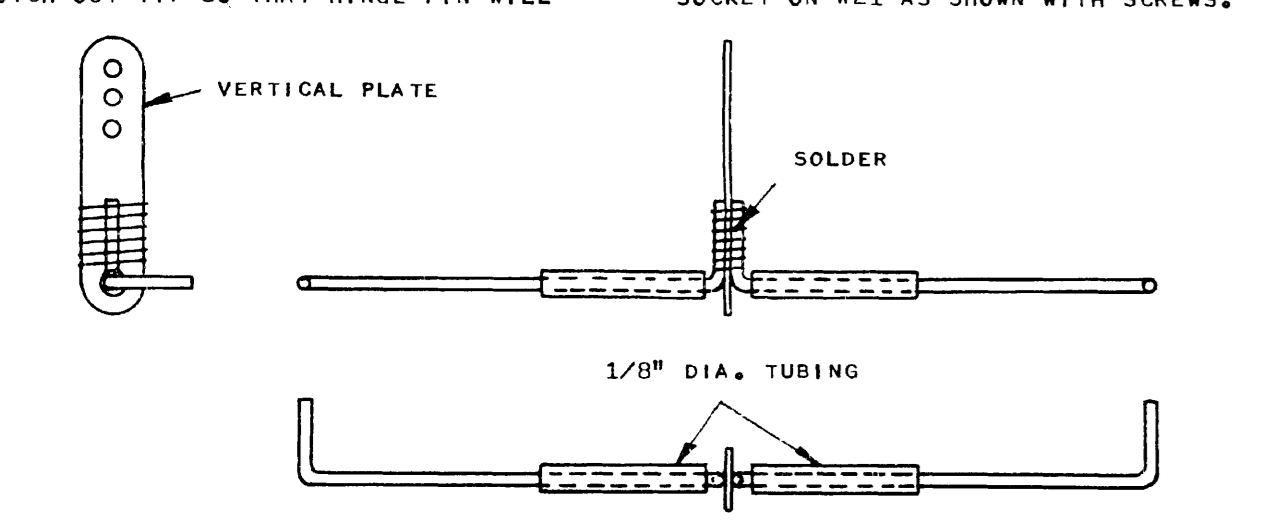


AILERON CONTROL DETAIL

USING PATTERNS PROVIDED, BEND THE FOLLOWING FROM #16 WIRE: 2 PUSH RODS, 2 CONTROL ROD HALVES, 2 TIP HINGE PINS (#16) AND 1 CENTER HINGE PIN. SOLDER WASHER TO SPURS AS SHOWN. INSERT BOTH HALVES OF CONTROL ROD THRU HOLES IN RIBS, SPUR TOWARDS TIPS AS SHOWN. CUT NOTCH THRU CENTER PIECE & BOTTOM WEB BETWEEN RIBS #7 & #1 AT LOCATIONS SHOWN ON SKETCH. DRILL 1/16" DIA. HOLES IN SLIP PUSH ROD THRU SLOT, LONG SPUR TO REAR. DRILL 1/16" DIA. HOLES IN WIRE BY INSERTING PUSH-ROD SPUR THRU END OF SHEET (SEE FULL SIZE WING DRAWING), AND INSERTING SPUR OF CONTROL ROD IN OTHER SIDE. SLIP WASHER OVER 1/4" X 1/2" SCREW AND INSERT THRU BOTTOM OF #15, TIGHTEN IN PLACE WITH NUT ON OPPOSITE SIDE, OPEN FACE OF NUT AGAINST PLUMB, APPLY A COAT OF CEMENT AROUND HEAD OF SCREW AND NUT, WHEN DRY, SLIP DOWN LEAVING JUST ENOUGH CLEARANCE FOR FREE AND EASY MOVEMENT OF CONTROL ROD. TIGHTEN IN PLACE ON SCREW, SOLDER RETAINER WASHERS TO TOP OF SPURS AS SHOWN. CARDSHARDEN PLATE BETWEEN WASHER AND WIRE WHILE SOLDERING WILL ALLOW CLEARANCE FOR FREE AND EASY MOVEMENT. INSTALL OPPOSITE SIDE IN SAME MANNER. SLIP AILERON ON HINGE PIN AND PUSH-ROD SPUR, INSERT TIP HINGE PIN (WITH WASHER) INTO AILERON AND HOLD AILERON IN POSITION PLACING CARDSHARDEN BETWEEN UNITS TO ALLOW CLEARANCE FOR MOVEMENT. MARK OF LOCATION OF SPUR AND REMOVE AILERON, DRILL 1/16" HOLE FOR SPUR AND NOTCH OUT TIP SO THAT HINGE PIN WILL



ELEVATOR HORN ASSEMBLY

MAKE VERTICAL PLATE FROM #40 TO #45 BRASS (NOT INCLUDING HORN AS DRAWING IS FULL SIZE). DRILL 1/16" HOLES AS SHOWN. CARDSHARDEN PLATE AS SHOWN. LENGTHS OF 1/8" DIA. TUBING TO BE SOLDERED TO HORN. HORN IS NOW READY TO BE INSTALLED IN PLACE BEFORE SECOND BEND IS MADE.

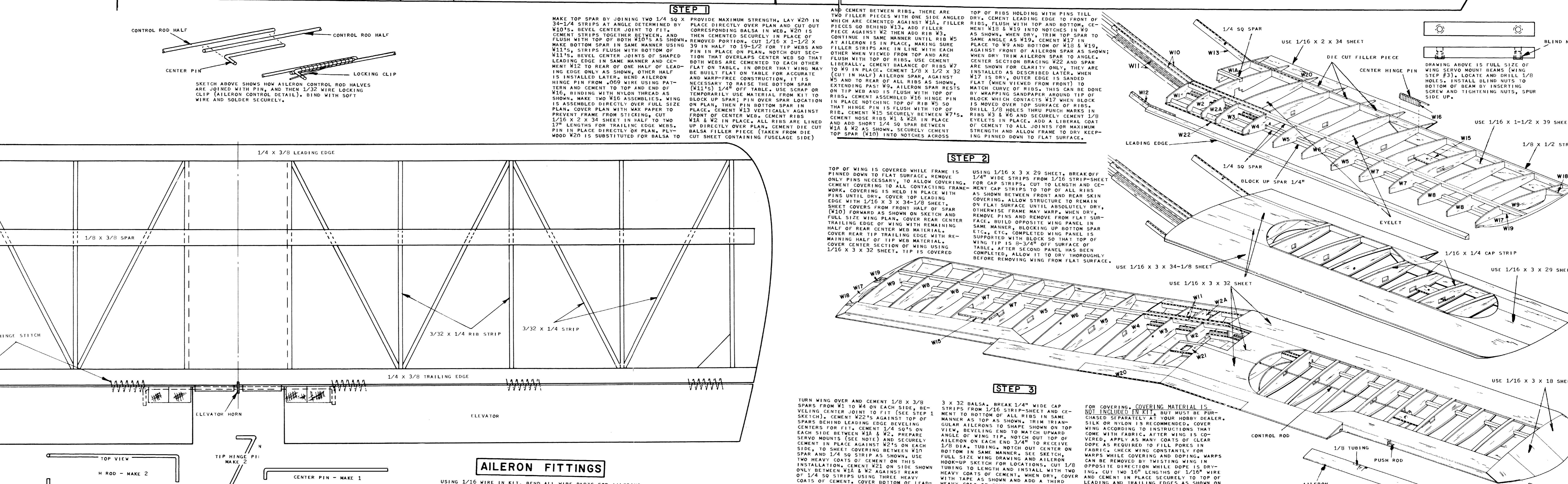
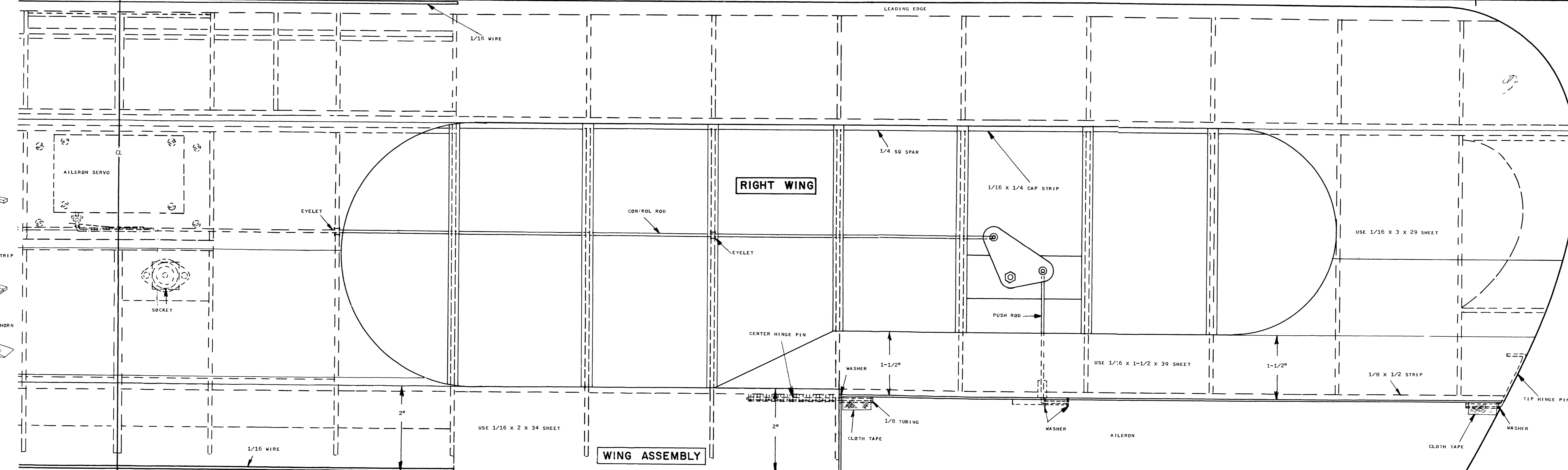
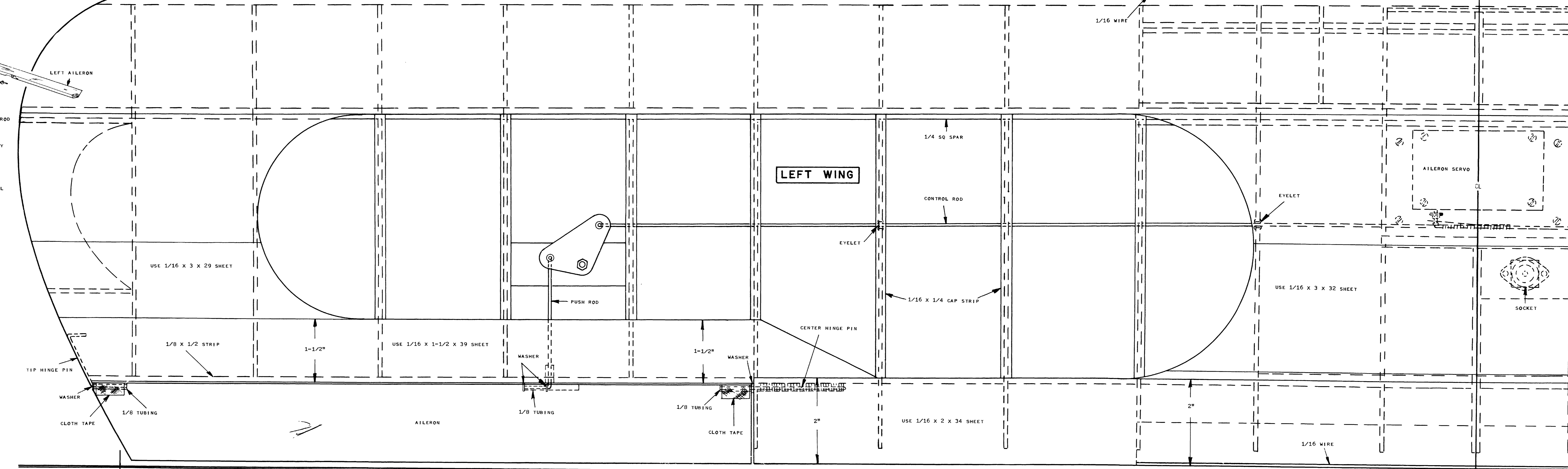
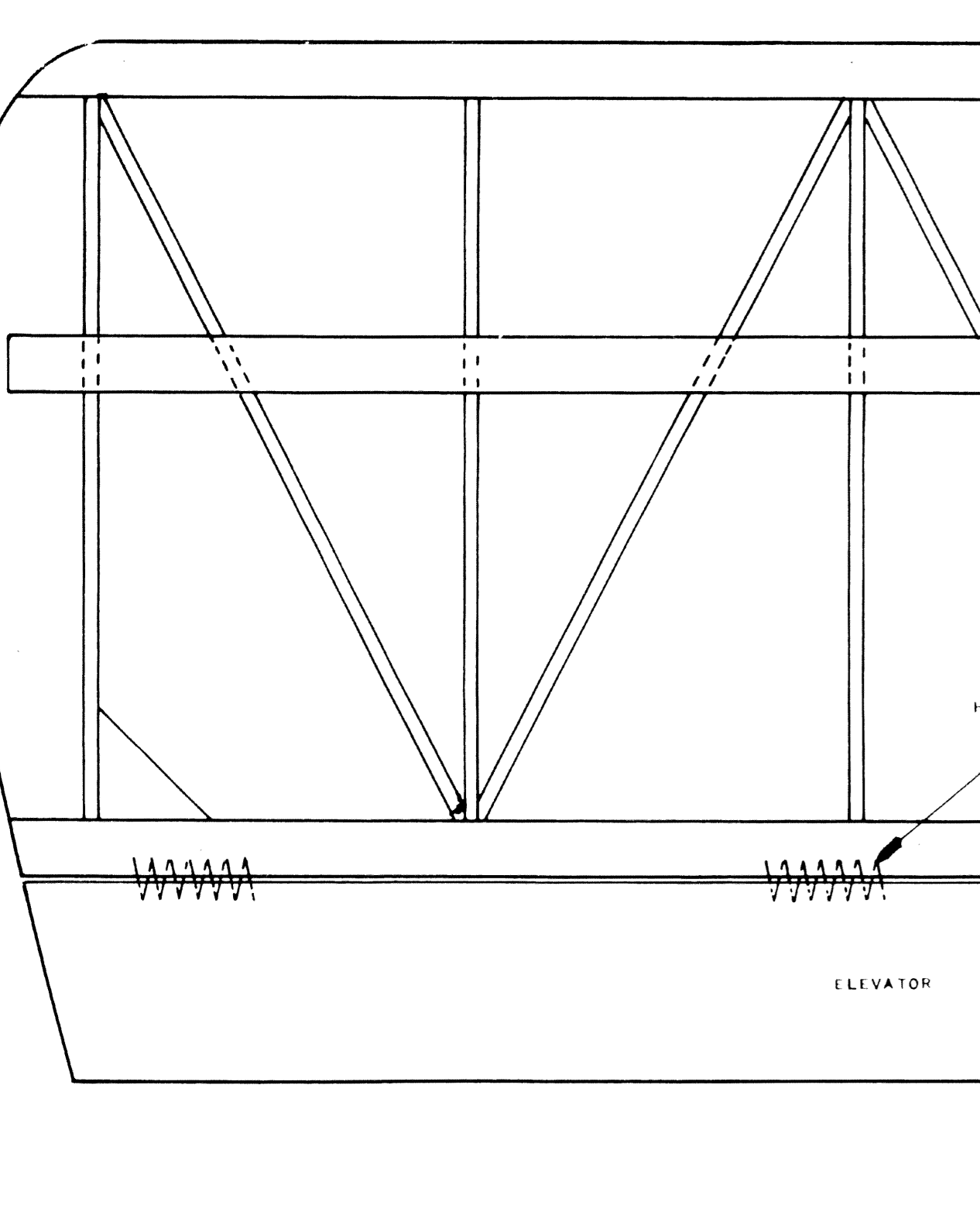


STABILIZER CONSTRUCTION

TURN WING OVER AND CEMENT 1/8" X 3/8" SPURS FROM #10 TO #15 IN SAME MANNER AS BOTTOM AND ALLOW STRUCTURE TO DRY THOROUGHLY ON FLAT SURFACE BEFORE REMOVING. SAND ENTIRE STRUCTURE SMOOTH ROUNDING ALL EDGES AS SHOWN IN SKETCH AND FULL SIZE SIDE VIEW DRAWING. MAKE ELEVATOR HORN ASSEMBLY AS DESCRIBED IN DETAIL NOTE, LOCATE AND DRILL 1/16" HOLES IN TOP SPURS IN CENTER OF ELEVATORS (VIEWED FROM FRONT) AND NOTCH OUT FRONT OF ELEVATORS SO THAT HORN IS FLUSH WHEN IT IS INSTALLED. CEMENT HORN IN PLACE WITH TWO HEAVY COATS OF CEMENT. WHEN DRY, COVER WITH CLOTH AND APPLY A THIRD COAT OF CEMENT. HORN MUST BE VERTICAL AND ELEVATORS IN LINE WITH EACH OTHER, WHEN VIEWED FROM SIDE. FRAMEWORK IS NOW COVERED WITH SIDE OF NYLON. COVERING MATERIAL IS NOT SUPPLIED WITH KIT BUT MUST BE PURCHASED SEPARATELY BY MODEL BUILDER. BE CERTAIN TO ALSO COVER ELEVATORS. APPLY ENOUGH COATS OF CLEAR DOPE TO FILL PORES AND PAINT AS DESCRIBED IN FINAL ASSEMBLY NOTE. CHECK STRUCTURE CONSTANTLY FOR WARPS. IF WARPS OCCUR, APPLY AN ADDITIONAL COAT OF DOPE AND PAINT IN OPPOSITE DIRECTION HOLDING UNTIL DRY. AFTER PARTS HAVE BEEN PAINTED, MAKE TWO VEE SHAPED HOLES LARGE ENOUGH TO PASS A NEEDLE THRU AT CENTER OF EACH ON PLANS AND INITIAL ELEVATORS TO STABILIZER WITH FLIGHT OF CENTER RIBS AS SHOWN IN DOTTED LINES IN FULL SIZE DRAWING TO ALLOW FOR 1/8" SHEET COVERING THEM. PIN FRAME BACK ON PLAN, SUPPORTING LEADING AND TRAILING EDGES WITH 1/8"

AILERON FITTINGS

TURN WING OVER AND CEMENT 1/8" X 3/8" SPURS FROM #10 TO #15 IN SAME MANNER AS BOTTOM AND ALLOW STRUCTURE TO DRY THOROUGHLY ON FLAT SURFACE BEFORE REMOVING. SAND ENTIRE STRUCTURE SMOOTH ROUNDING ALL EDGES AS SHOWN IN SKETCH AND FULL SIZE SIDE VIEW DRAWING. MAKE ELEVATOR HORN ASSEMBLY AS DESCRIBED IN DETAIL NOTE, LOCATE AND DRILL 1/16" HOLES IN TOP SPURS IN CENTER OF ELEVATORS (VIEWED FROM FRONT) AND NOTCH OUT FRONT OF ELEVATORS SO THAT HORN IS FLUSH WHEN IT IS INSTALLED. CEMENT HORN IN PLACE WITH TWO HEAVY COATS OF CEMENT. WHEN DRY, COVER WITH CLOTH AND APPLY A THIRD COAT OF CEMENT. HORN MUST BE VERTICAL AND ELEVATORS IN LINE WITH EACH OTHER, WHEN VIEWED FROM SIDE. FRAMEWORK IS NOW COVERED WITH SIDE OF NYLON. COVERING MATERIAL IS NOT SUPPLIED WITH KIT BUT MUST BE PURCHASED SEPARATELY BY MODEL BUILDER. BE CERTAIN TO ALSO COVER ELEVATORS. APPLY ENOUGH COATS OF CLEAR DOPE TO FILL PORES AND PAINT AS DESCRIBED IN FINAL ASSEMBLY NOTE. CHECK STRUCTURE CONSTANTLY FOR WARPS. IF WARPS OCCUR, APPLY AN ADDITIONAL COAT OF DOPE AND PAINT IN OPPOSITE DIRECTION HOLDING UNTIL DRY. AFTER PARTS HAVE BEEN PAINTED, MAKE TWO VEE SHAPED HOLES LARGE ENOUGH TO PASS A NEEDLE THRU AT CENTER OF EACH ON PLANS AND INITIAL ELEVATORS TO STABILIZER WITH FLIGHT OF CENTER RIBS AS SHOWN IN DOTTED LINES IN FULL SIZE DRAWING TO ALLOW FOR 1/8" SHEET COVERING THEM. PIN FRAME BACK ON PLAN, SUPPORTING LEADING AND TRAILING EDGES WITH 1/8"



STEP 1

MAKE TOP SPAR BY JOINING TWO 1/4" X 50 X 3/8" BALSAS AT ANGLE DETERMINED BY CORRESPONDING BALSAS IN WING. WOOD IS PLACE DIRECTLY OVER PLAN AND CUT OUT REMOVED PORTION. CUT 1/16" X 1/2" X 3/8" BALSAS IN SAME MANNER USING 3/8" IN HALF TO OVERLAP CENTER WEB. BOTH WEBS ARE CEMENTED TO EACH OTHER FLAT ON TABLE IN ORDER THAT WING MAY BE BUILT FLAT ON TABLE FOR ACCURATE AND WARP-FREE CONSTRUCTION. IT IS NECESSARY TO RAISE THE BOTTOM SPAR ON PLAN, THEN PIN BOTTOM SPAR IN PLACE. CENTER WEB VERTICALLY AGAINST FRONT OF CENTER WEB. CEMENT RIBS #2, #3, #4, #5, #6, #7, #8, #9, #10, #11, #12, #13, #14, #15 DIRECTLY OVER PLAN. CEMENT DIE CUT Balsa FILLER PIECE (TAKEN FROM DIE CUT SHEET CONTAINING FUSELAGE SIDE)

STEP 2

TOP OF WING IS COVERED WHILE FRAME IS PINNED DOWN TO FLAT SURFACE. REMOVE ONLY PINS NECESSARY TO ALLOW COVERING. CEMENT COVERING TO ALL CONTACTING FRAME PINS UNTIL DRY. COVER TOP LEADING EDGE WITH 1/16" X 3 X 34-1/2 SHEET. CUT FORWARD FROM FRONT HALF OF SPAR TO REAR CENTER WEB MATERIAL. TRAILING EDGE OF WING SHOULD REMAIN COVER REAR CENTER WEB MATERIAL. SERVO MOTOR IS TO BE COVERED BY REMAINING HALF OF TIP WEB MATERIAL. SIDE OF WING IS COVERED BY 1/16" X 3 X 32 SHEET. TIP IS COVERED

STEP 3

TURN WING OVER AND CEMENT 1/8" X 3/8" SPURS FROM #10 TO #15 IN SAME MANNER AS BOTTOM AND ALLOW STRUCTURE TO DRY THOROUGHLY ON FLAT SURFACE BEFORE REMOVING. SAND ENTIRE STRUCTURE SMOOTH ROUNDING ALL EDGES AS SHOWN IN SKETCH AND FULL SIZE SIDE VIEW DRAWING. MAKE ELEVATOR HORN ASSEMBLY AS DESCRIBED IN DETAIL NOTE, LOCATE AND DRILL 1/16" HOLES IN TOP SPURS IN CENTER OF ELEVATORS (VIEWED FROM FRONT) AND NOTCH OUT FRONT OF ELEVATORS SO THAT HORN IS FLUSH WHEN IT IS INSTALLED. CEMENT HORN IN PLACE WITH TWO HEAVY COATS OF CEMENT. WHEN DRY, COVER WITH CLOTH AND APPLY A THIRD COAT OF CEMENT. HORN MUST BE VERTICAL AND ELEVATORS IN LINE WITH EACH OTHER, WHEN VIEWED FROM SIDE. FRAMEWORK IS NOW COVERED WITH SIDE OF NYLON. COVERING MATERIAL IS NOT SUPPLIED WITH KIT BUT MUST BE PURCHASED SEPARATELY BY MODEL BUILDER. BE CERTAIN TO ALSO COVER ELEVATORS. APPLY ENOUGH COATS OF CLEAR DOPE TO FILL PORES AND PAINT AS DESCRIBED IN FINAL ASSEMBLY NOTE. CHECK STRUCTURE CONSTANTLY FOR WARPS. IF WARPS OCCUR, APPLY AN ADDITIONAL COAT OF DOPE AND PAINT IN OPPOSITE DIRECTION HOLDING UNTIL DRY. AFTER PARTS HAVE BEEN PAINTED, MAKE TWO VEE SHAPED HOLES LARGE ENOUGH TO PASS A NEEDLE THRU AT CENTER OF EACH ON PLANS AND INITIAL ELEVATORS TO STABILIZER WITH FLIGHT OF CENTER RIBS AS SHOWN IN DOTTED LINES IN FULL SIZE DRAWING TO ALLOW FOR 1/8" SHEET COVERING THEM. PIN FRAME BACK ON PLAN, SUPPORTING LEADING AND TRAILING EDGES WITH 1/8"

STEP 4

FOR COVERING, COVERING MATERIAL IS NOT INCLUDED IN KIT, BUT MUST BE PURCHASED SEPARATELY AT YOUR HOBBY SHOP. SILK OR NYLON IS RECOMMENDED. COVER WING ACCORDING TO YOUR HOBBY SHOP. COME WITH FABRIC, AFTER WING IS COVERED, APPLY AS MANY COATS OF CLEAR DOPE AS REQUIRED TO FILL PORES IN CARDSHARDEN WING CONSTANTLY FOR WARPS WHILE COVERING AND DOPING. WARPS CAN BE REMOVED BY CHASTING WING OPPOSITE DIRECTION WHILE DOPE IS DRYING. CUT THE TRAILING EDGES AS SHOWN ON FULL SIZE WING PLAN. THIS WILL PREVENT DAMAGE FROM THE DOWN HUBBER. FINISH WITH COLOR DOP AS DESCRIBED IN FINAL ASSEMBLY AND PAINT NOTE.

STEP 5

FOR COVERING, COVERING MATERIAL IS NOT INCLUDED IN KIT, BUT MUST BE PURCHASED SEPARATELY AT YOUR HOBBY SHOP. SILK OR NYLON IS RECOMMENDED. COVER WING ACCORDING TO YOUR HOBBY SHOP. COME WITH FABRIC, AFTER WING IS COVERED, APPLY AS MANY COATS OF CLEAR DOPE AS REQUIRED TO FILL PORES IN CARDSHARDEN WING CONSTANTLY FOR WARPS WHILE COVERING AND DOPING. WARPS CAN BE REMOVED BY CHASTING WING OPPOSITE DIRECTION WHILE DOPE IS DRYING. CUT THE TRAILING EDGES AS SHOWN ON FULL SIZE WING PLAN. THIS WILL PREVENT DAMAGE FROM THE DOWN HUBBER. FINISH WITH COLOR DOP AS DESCRIBED IN FINAL ASSEMBLY AND PAINT NOTE.

