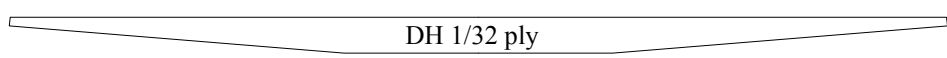
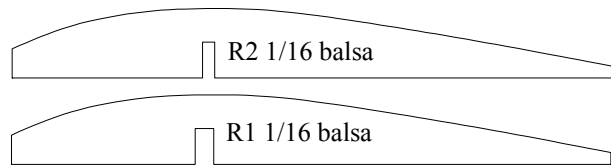
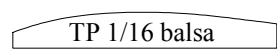
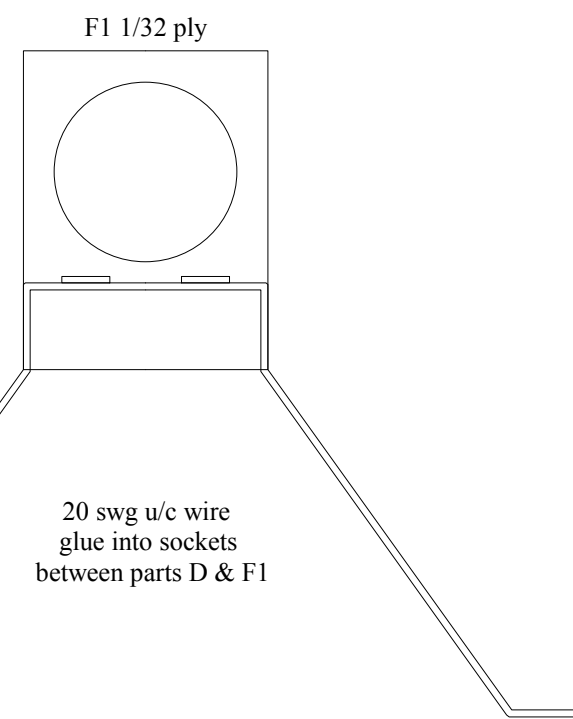
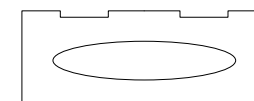
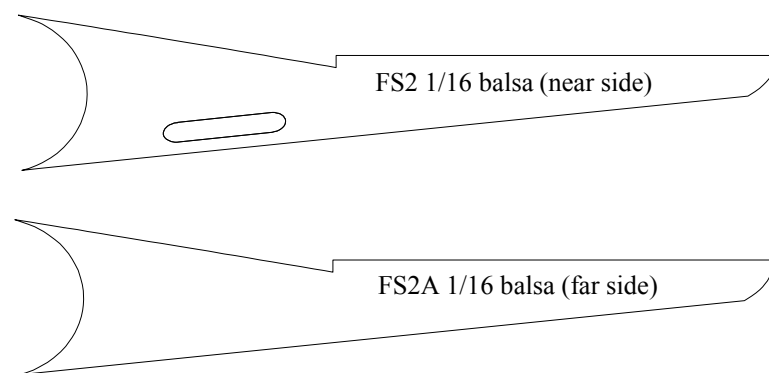
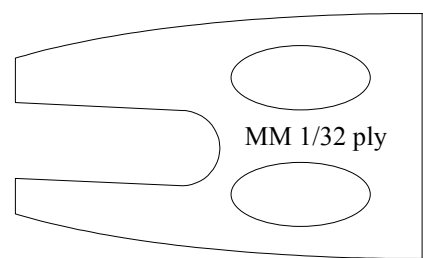
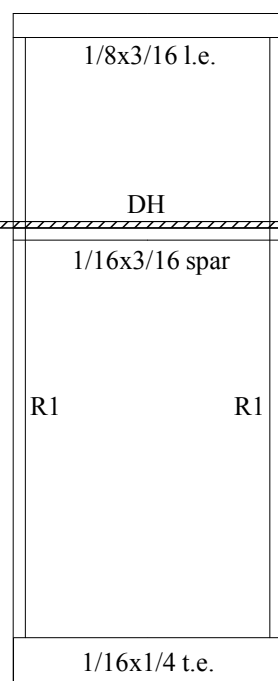
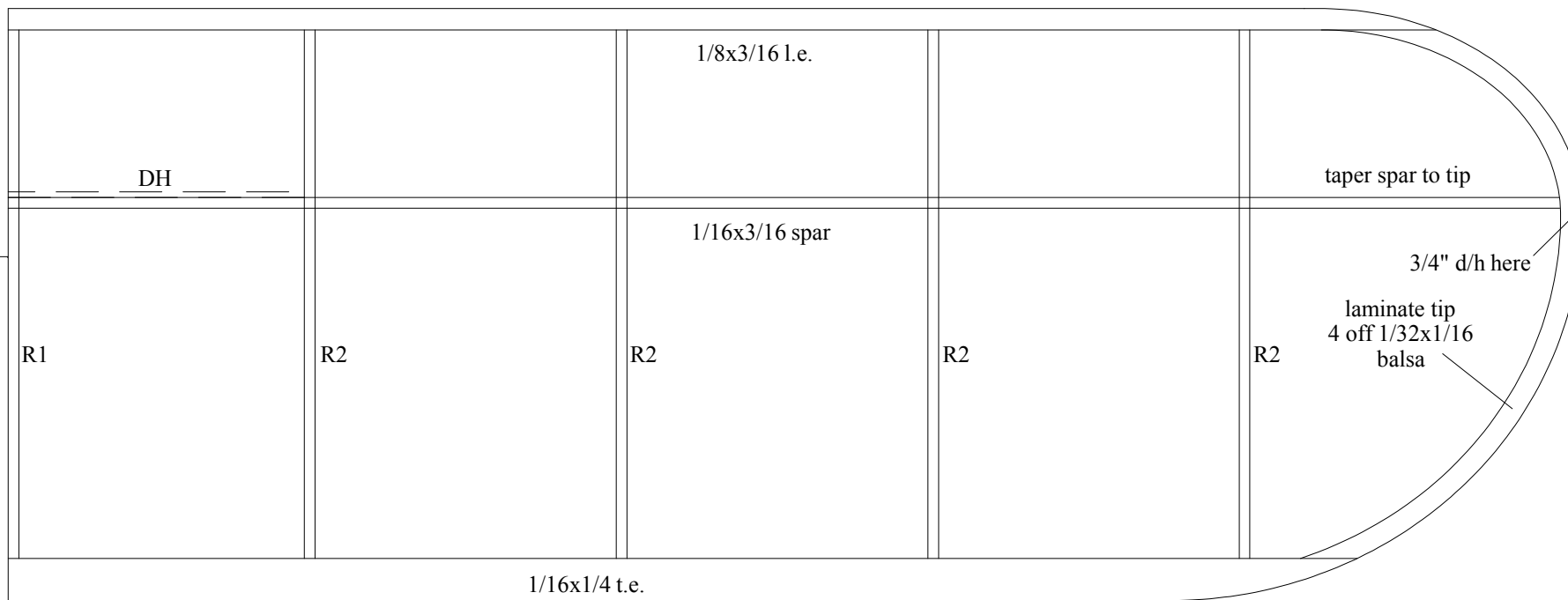


use DHG to set root rib for dihedral

unless stated otherwise all wood is 1/16 balsa by size or shape shown



use DHG to set root rib for dihedral



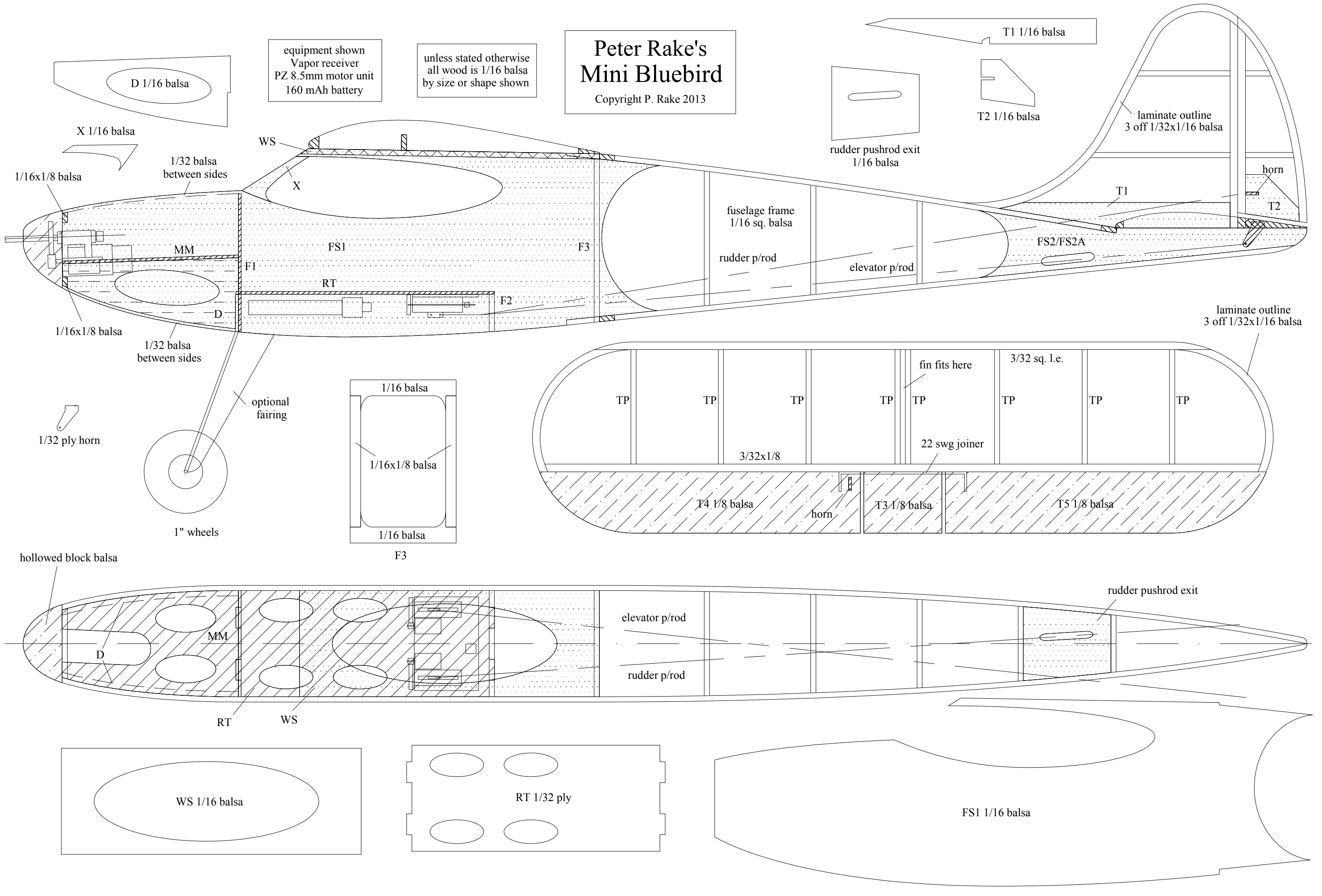
Peter Rake's Mini Bluebird  
Copyright P. Rake 2013

# Peter Rake's Mini Bluebird

Copyright P. Rake 2013

equipment shown  
Vapor receiver  
PZ 8.5mm motor unit  
160 mAh battery

unless stated otherwise  
all wood is 1/16 balsa  
by size or shape shown



D 1/16 balsa

X 1/16 balsa

WS

equipment shown  
Vapor receiver  
PZ 8.5mm motor unit  
160 mAh battery

unless stated otherwise  
all wood is 1/16 balsa  
by size or shape shown

# Peter Rake's Mini Bluebird

Copyright P. Rake 2013

T1 1/16 balsa

T2 1/16 balsa

laminated outline  
3 off 1/32x1/16 balsa

horn

T2

FS2/FS2A

rudder pushrod exit  
1/16 balsa

fuselage frame  
1/16 sq. balsa

rudder p/rod

elevator p/rod

laminated outline  
3 off 1/32x1/16 balsa

1/32 balsa  
between sides

1/16x1/8 balsa

MM

FS1

F3

F1

RT

F2

1/16x1/8 balsa

1/32 balsa  
between sides

optional  
fairing

1/32 ply horn

1" wheels

1/16 balsa

1/16x1/8 balsa

1/16 balsa

F3

TP

TP

TP

TP

fin fits here

3/32 sq. l.e.

TP

TP

TP

3/32x1/8

22 swg joiner

T4 1/8 balsa

horn

T3 1/8 balsa

T5 1/8 balsa

hollowed block balsa

D

MM

elevator p/rod

rudder p/rod

rudder pushrod exit

RT

WS

WS 1/16 balsa

RT 1/32 ply

FS1 1/16 balsa