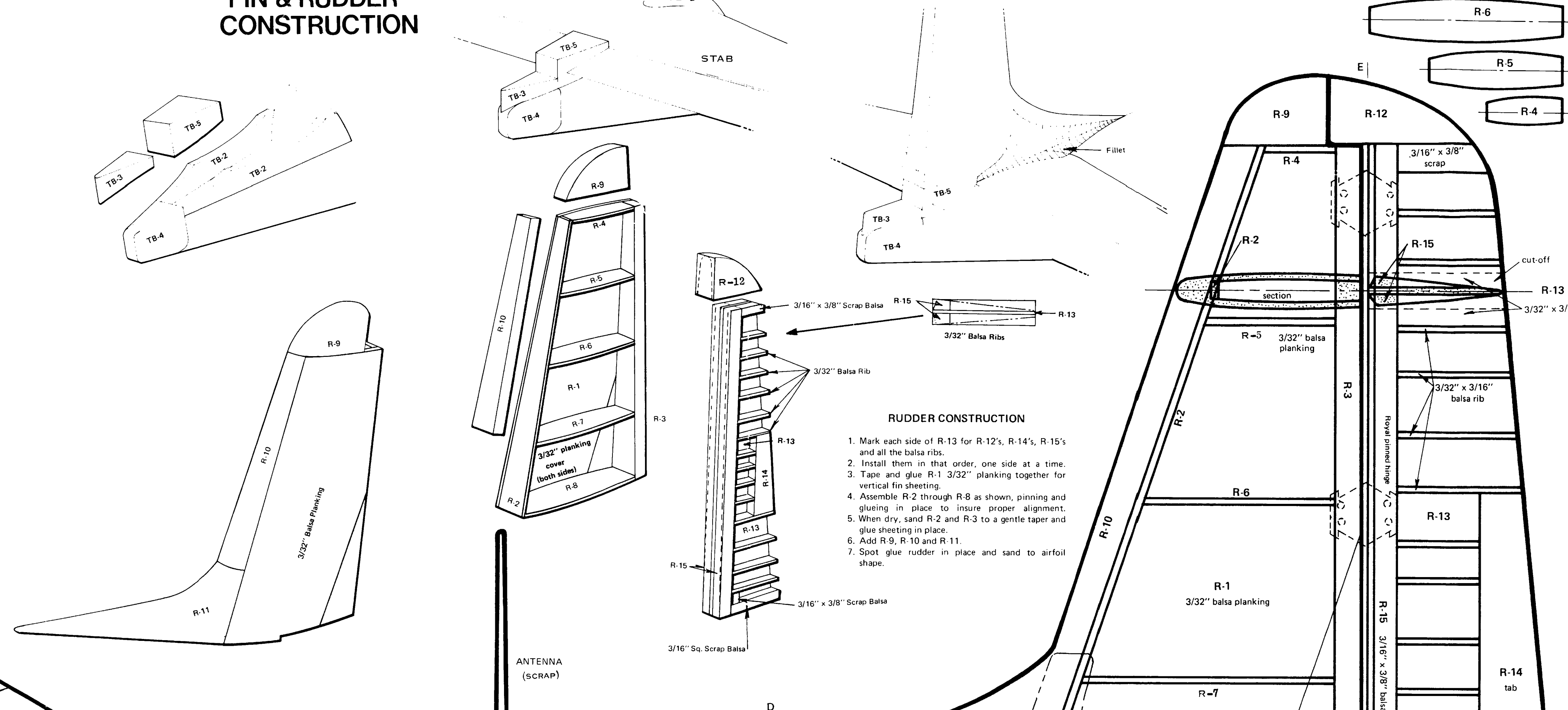
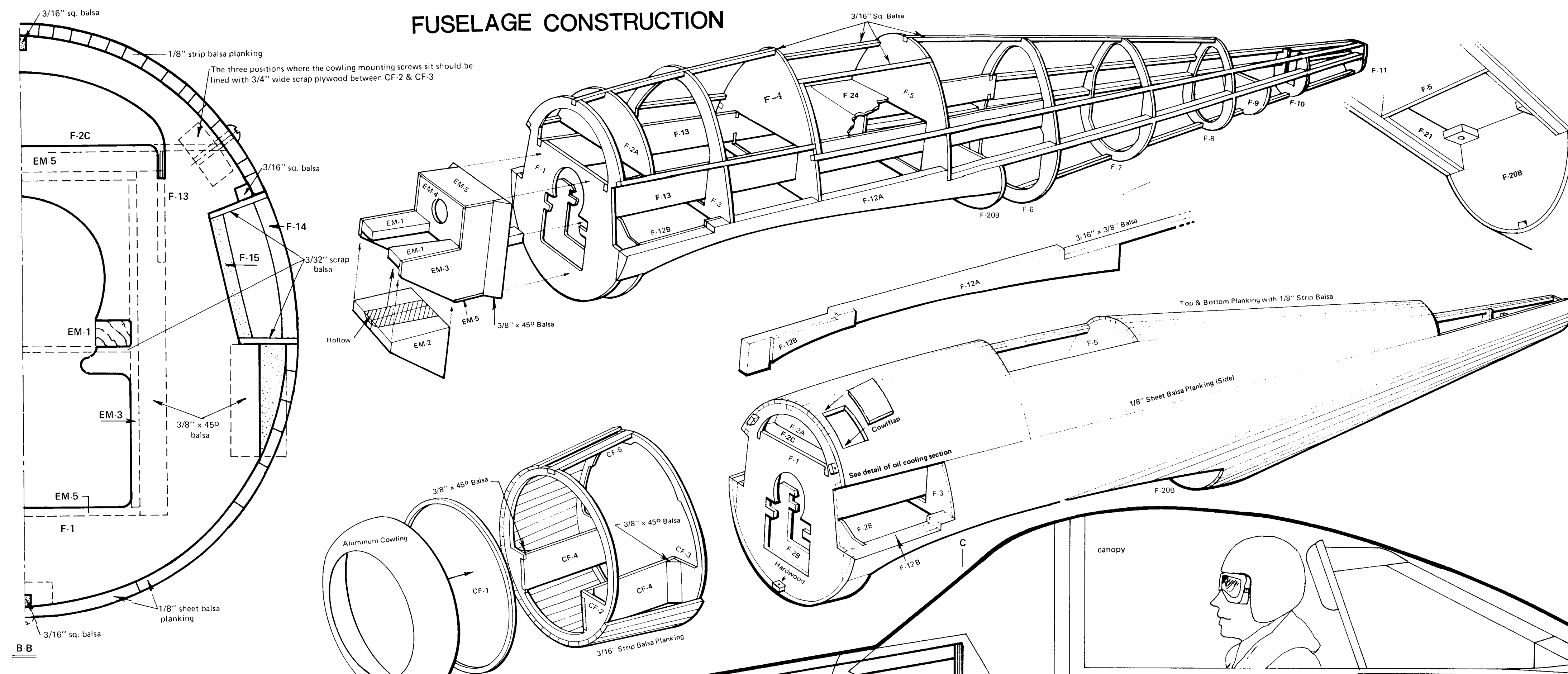
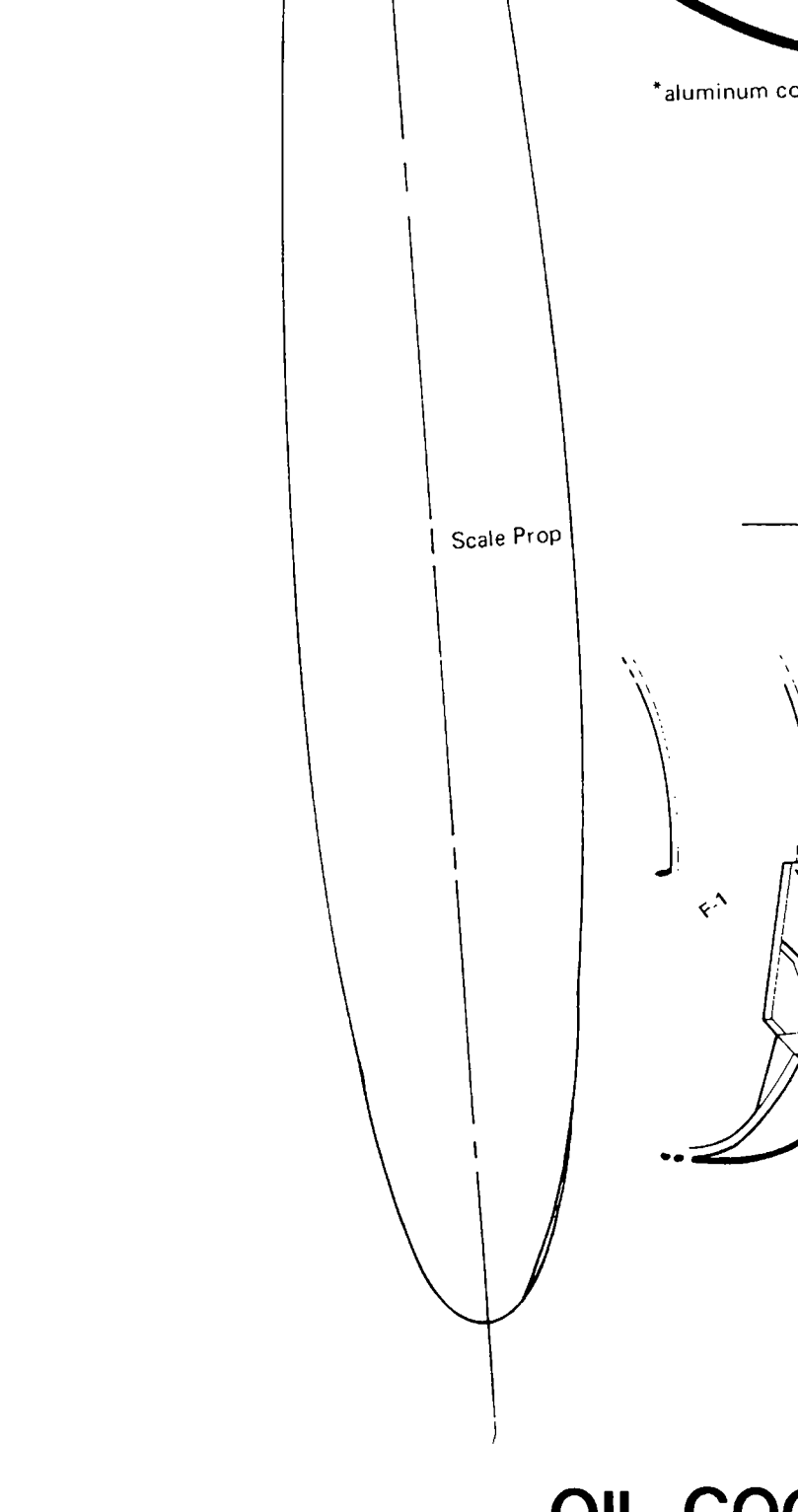
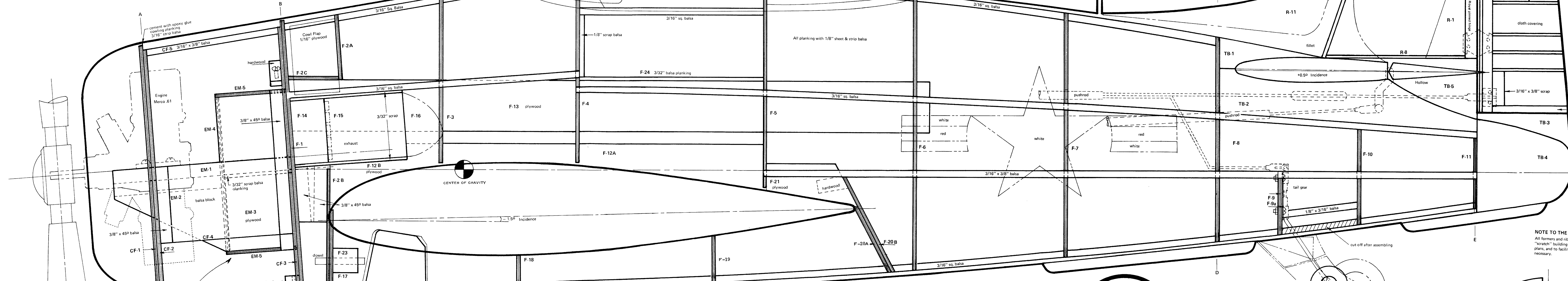
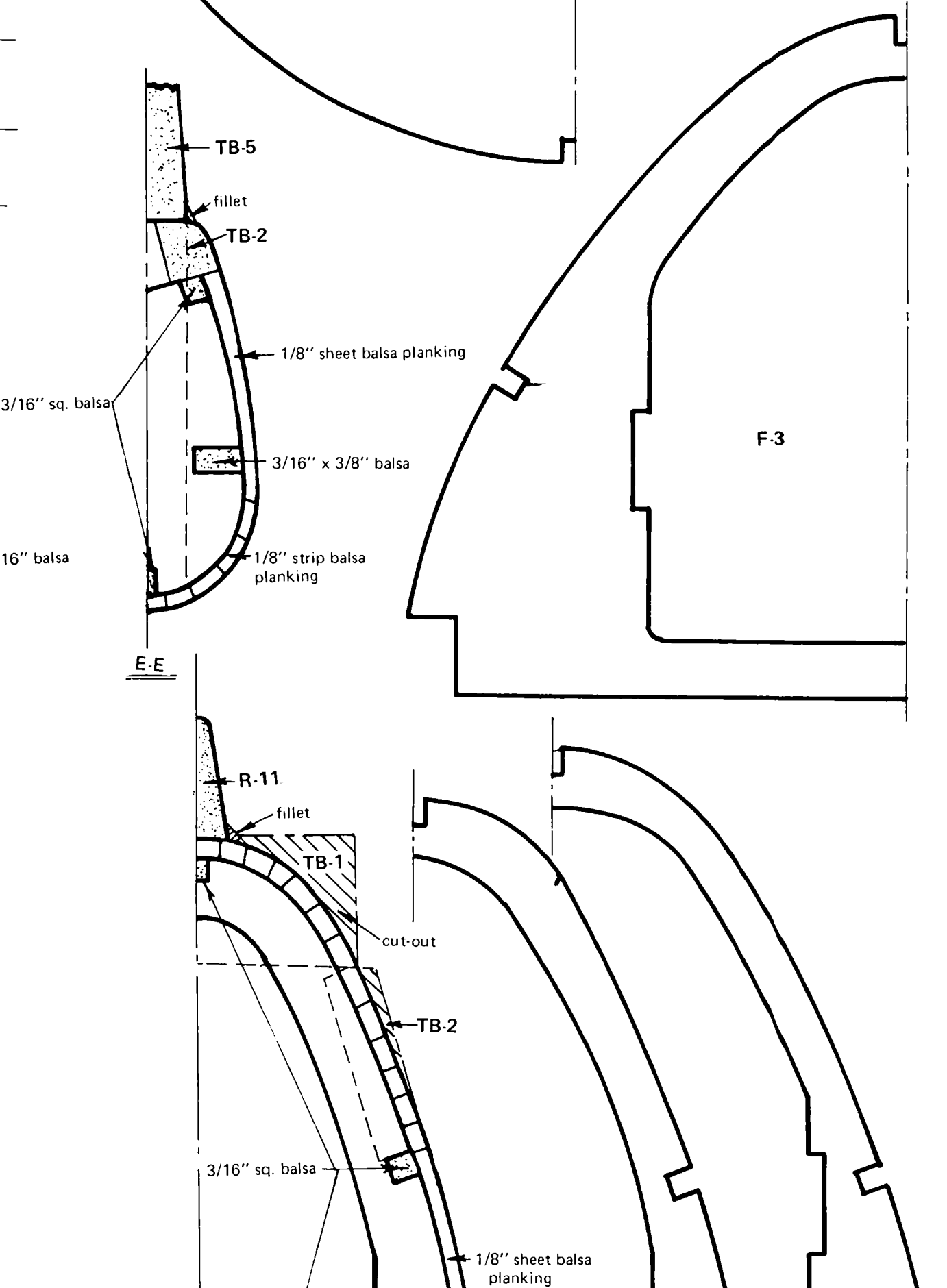
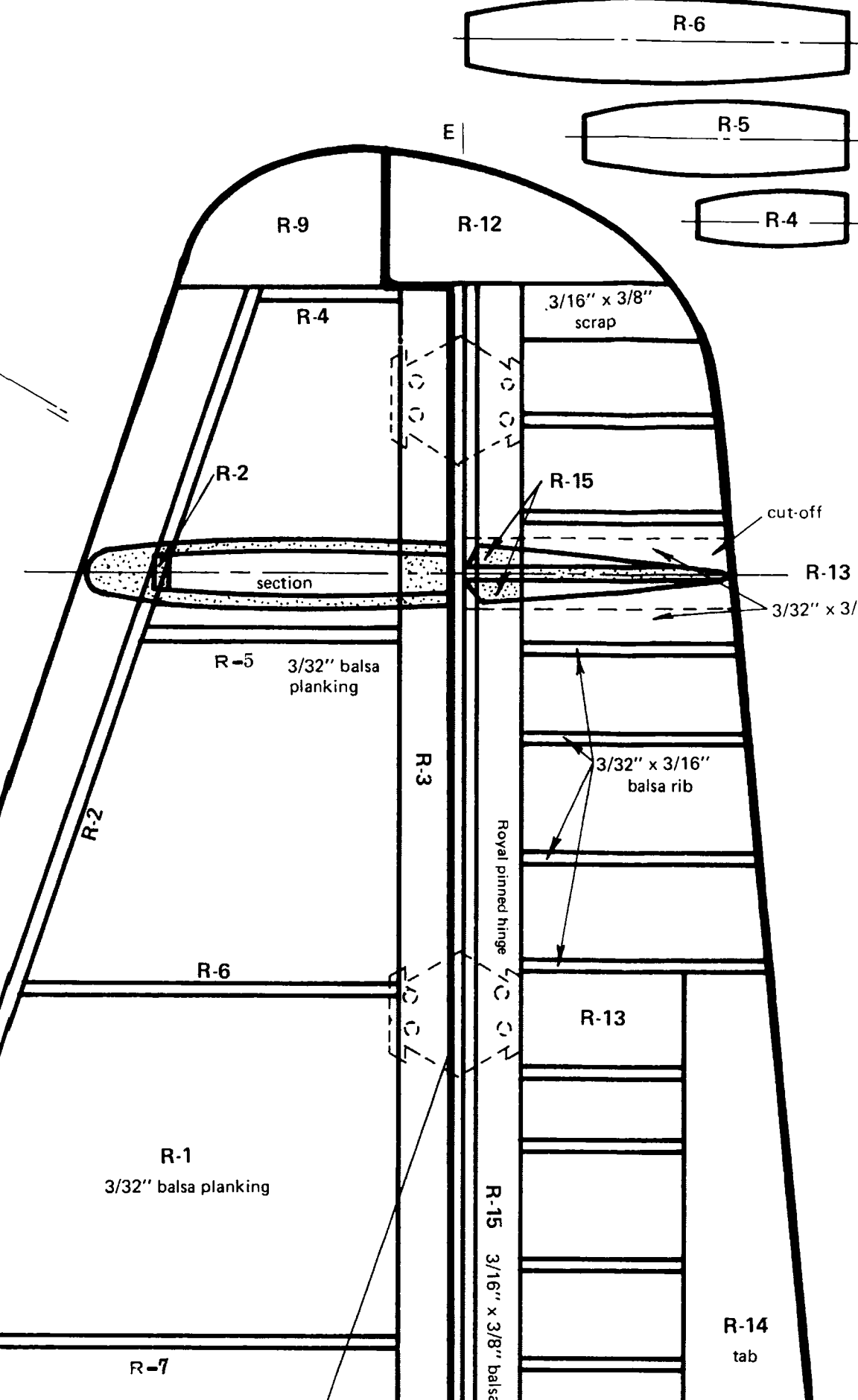
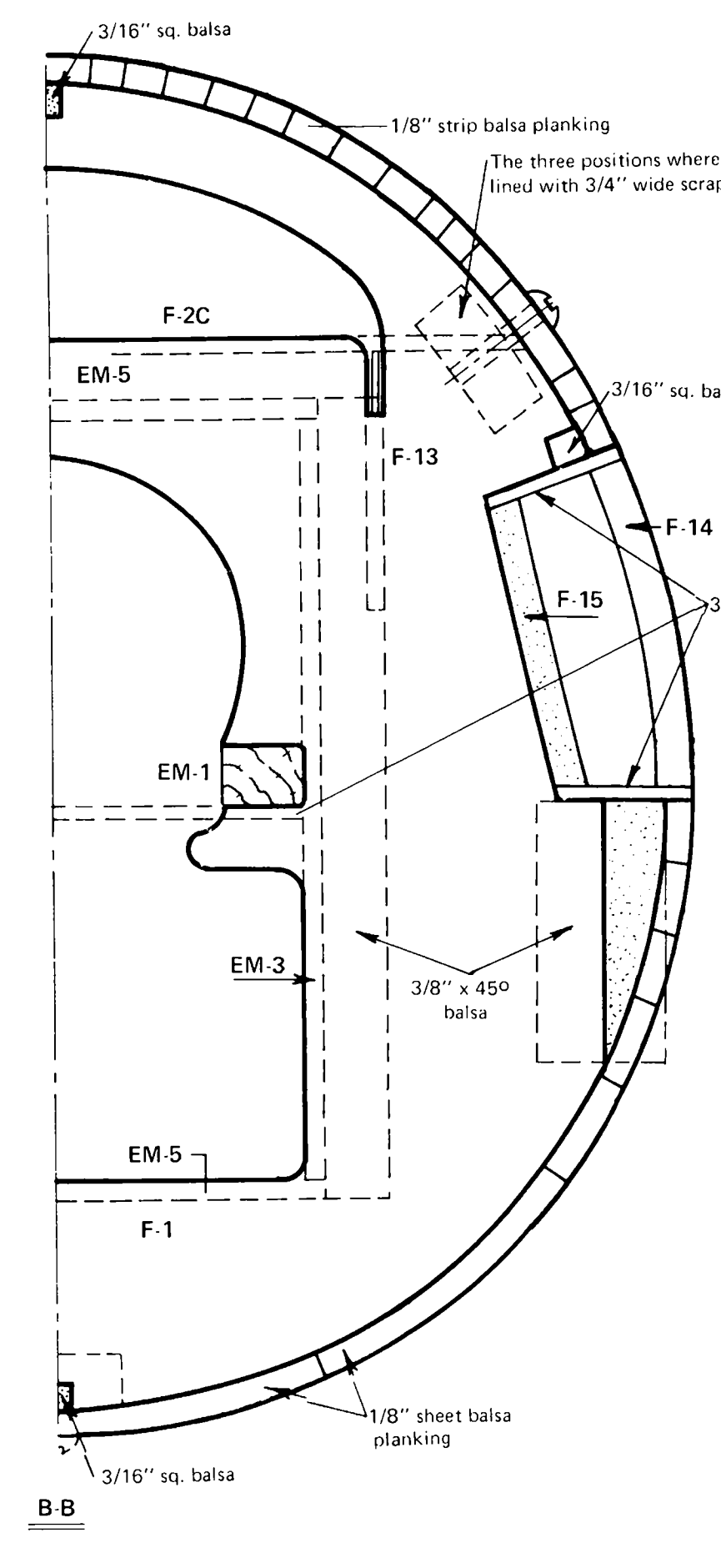
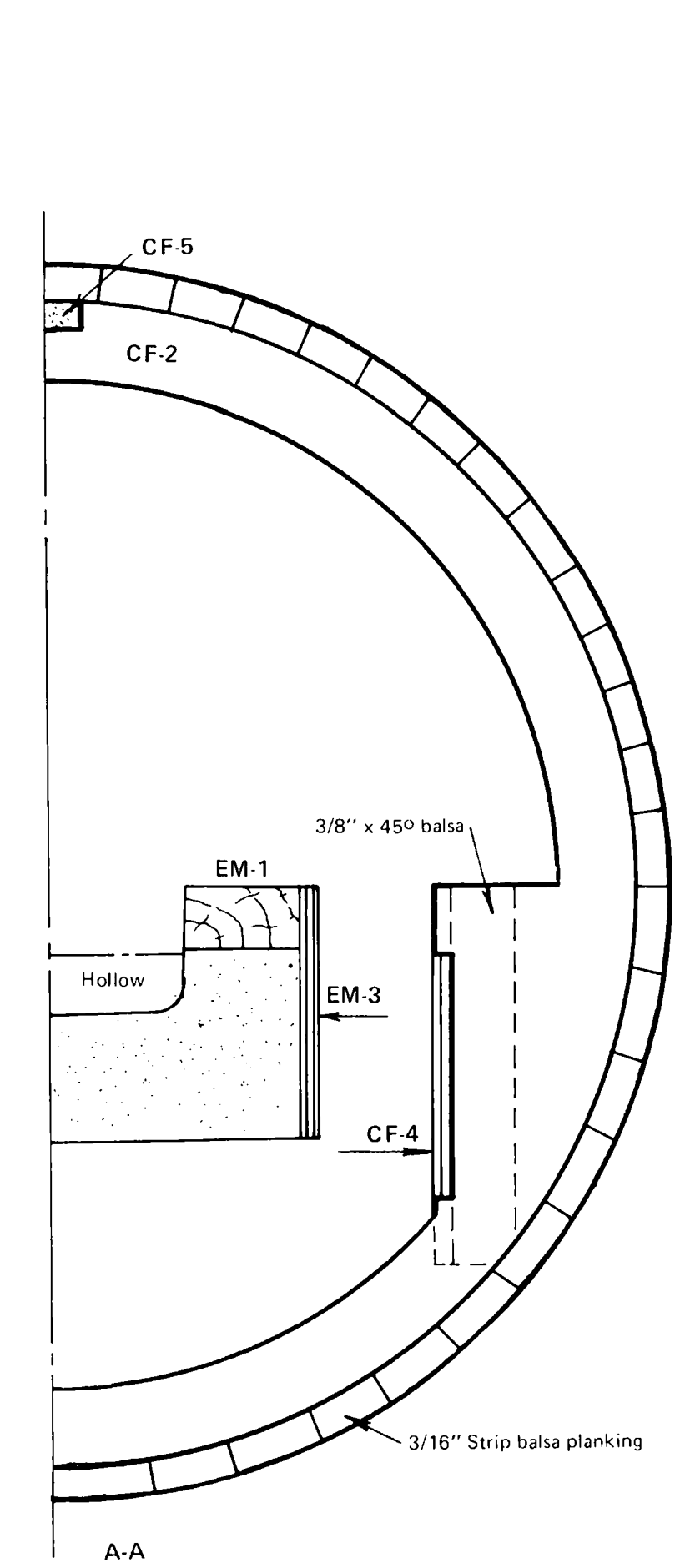


FUSELAGE CONSTRUCTION

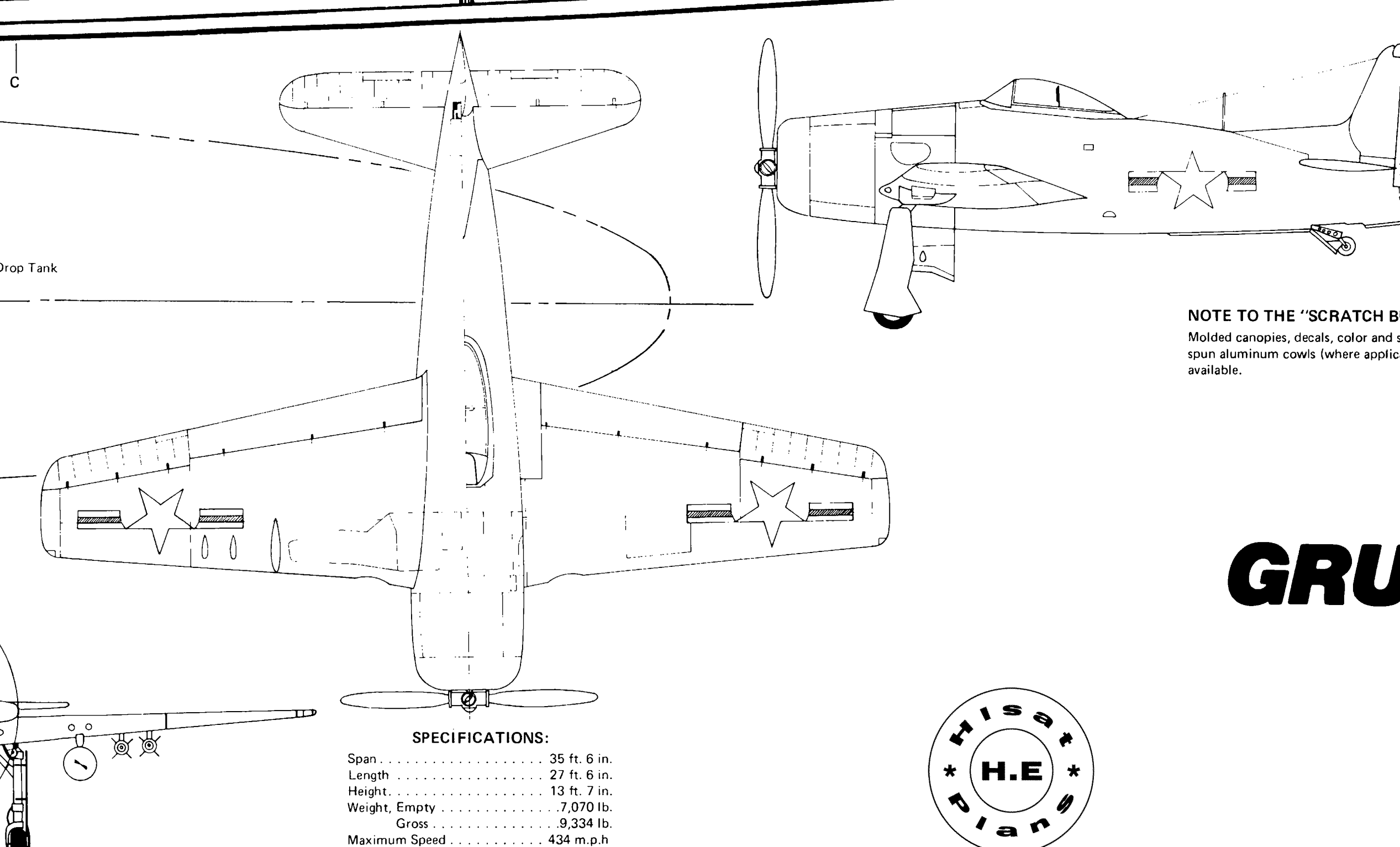
FIN & RUDDER CONSTRUCTION



- RUDDER CONSTRUCTION**
1. Mark each side of R-13 for R-12's, R-14's, R-15's and all the balsa ribs.
 2. Glue them in place center, one side at a time.
 3. Tape and glue R-13 3/32" planking together for vertical R-13 through R-15 as shown, pinning and gluing in place to insure proper alignment, glue working in place.
 4. Add R-1, R-2 and R-3 to a grille tape and glue working in place.
 5. Add R-4, R-5 and R-6.
 6. Add R-7, R-8 and R-9.
 7. Spot glue rudder in place and sand to airfoil shape.



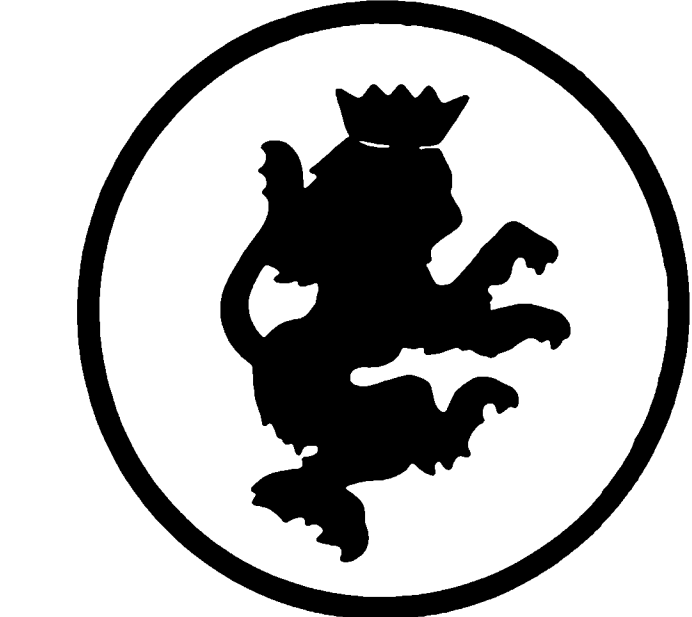
OIL COOLING SECTION



SPECIFICATIONS:

Span	35 1/4 in.
Length	27 1/2 in.
Height	13 1/2 in.
Wing Area	707 sq. in.
Weight	8 1/2 lbs.
Maximum Speed	438 m.p.h.
Service Ceiling	38,000 ft.
Range	1,140 mi.

NOTE TO THE "SCRATCH BUILDER"
 Molded canopies, discs, color and scale information, soon aluminum covers, where applicable are available.



ROYAL PRODUCTS CORP.

GRUMMAN

Bearcat

Scale: 1 3/4" = 1'

Length	48 3/16"
Wing Span	42 3/16"
Wing Area	652 sq. in.
Weight	8 1/2 lb.
Engine	60-80
Control	4.6 ch. Prop.

NOTE TO THE MODELER:
 All forms and ribs are shown actual size to make "scratch" building easily accomplished from these plans, and to facilitate any views that may be necessary.

