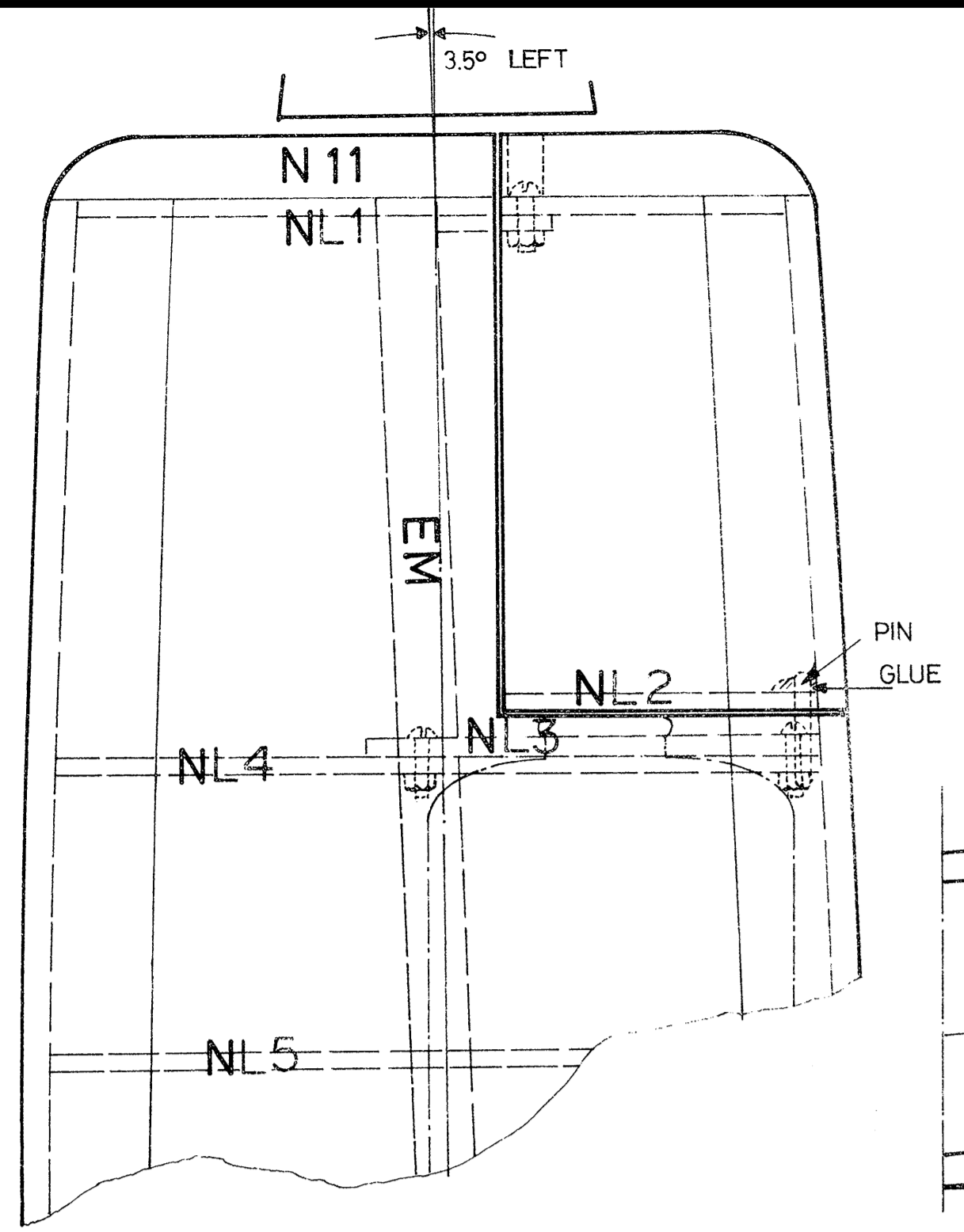


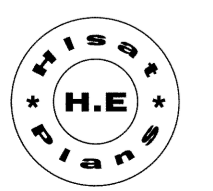
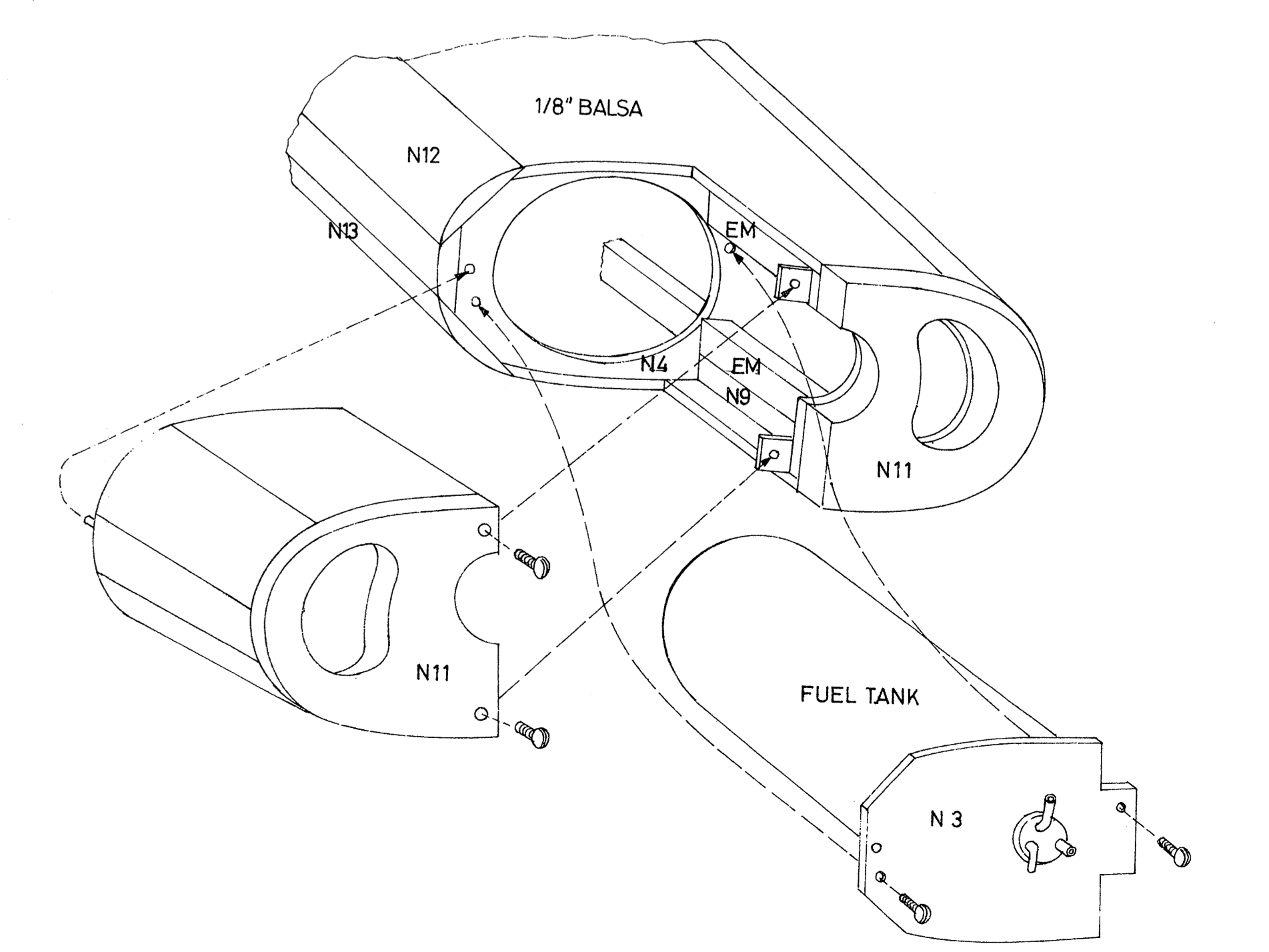
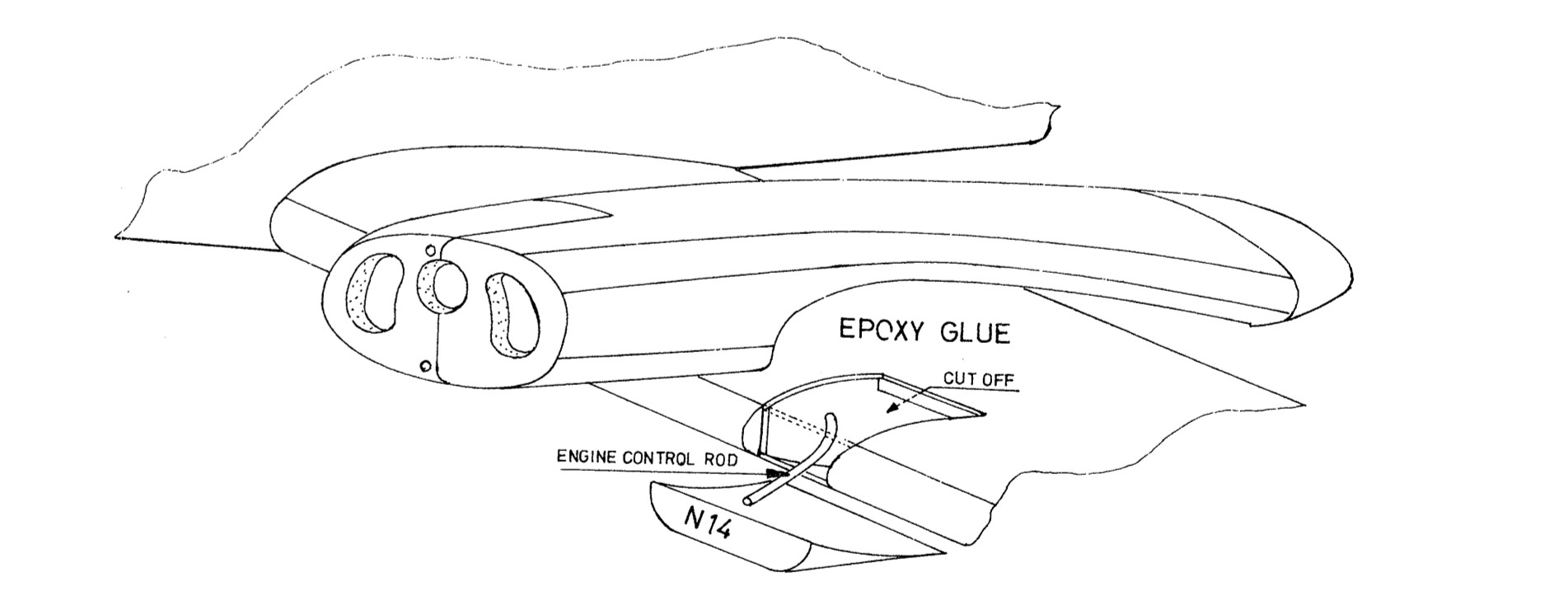
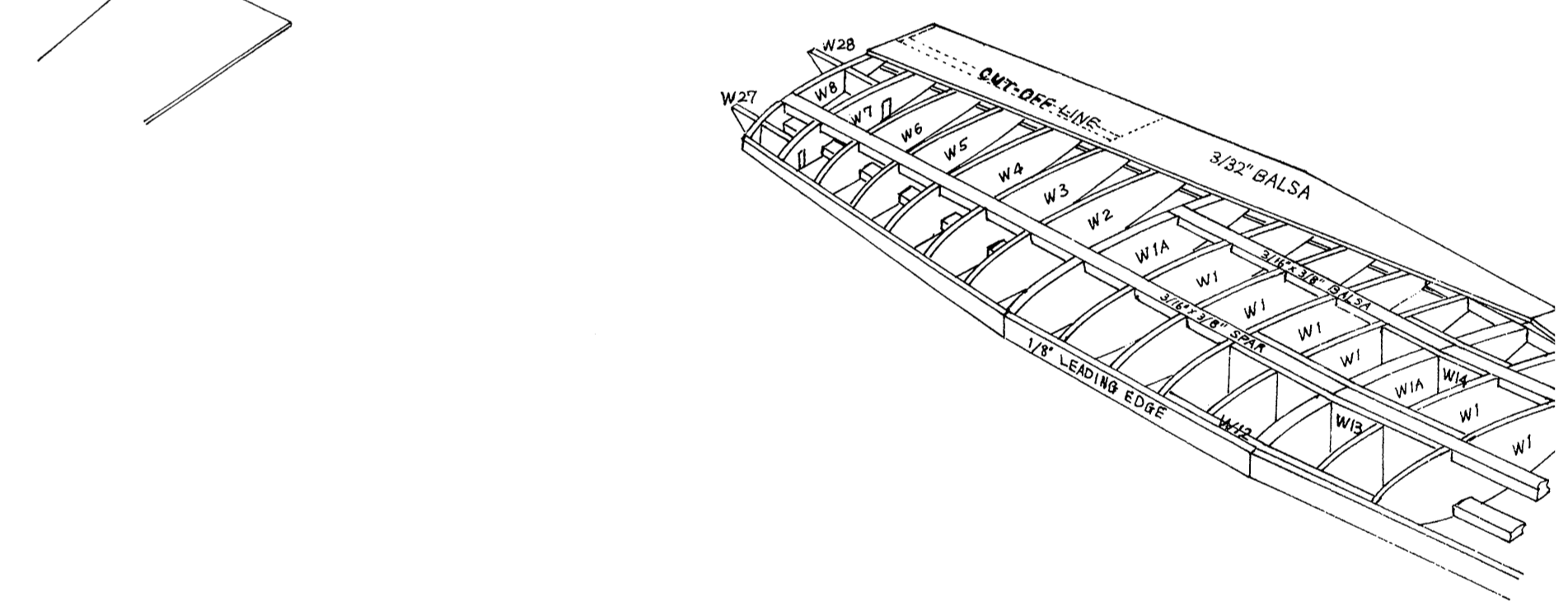
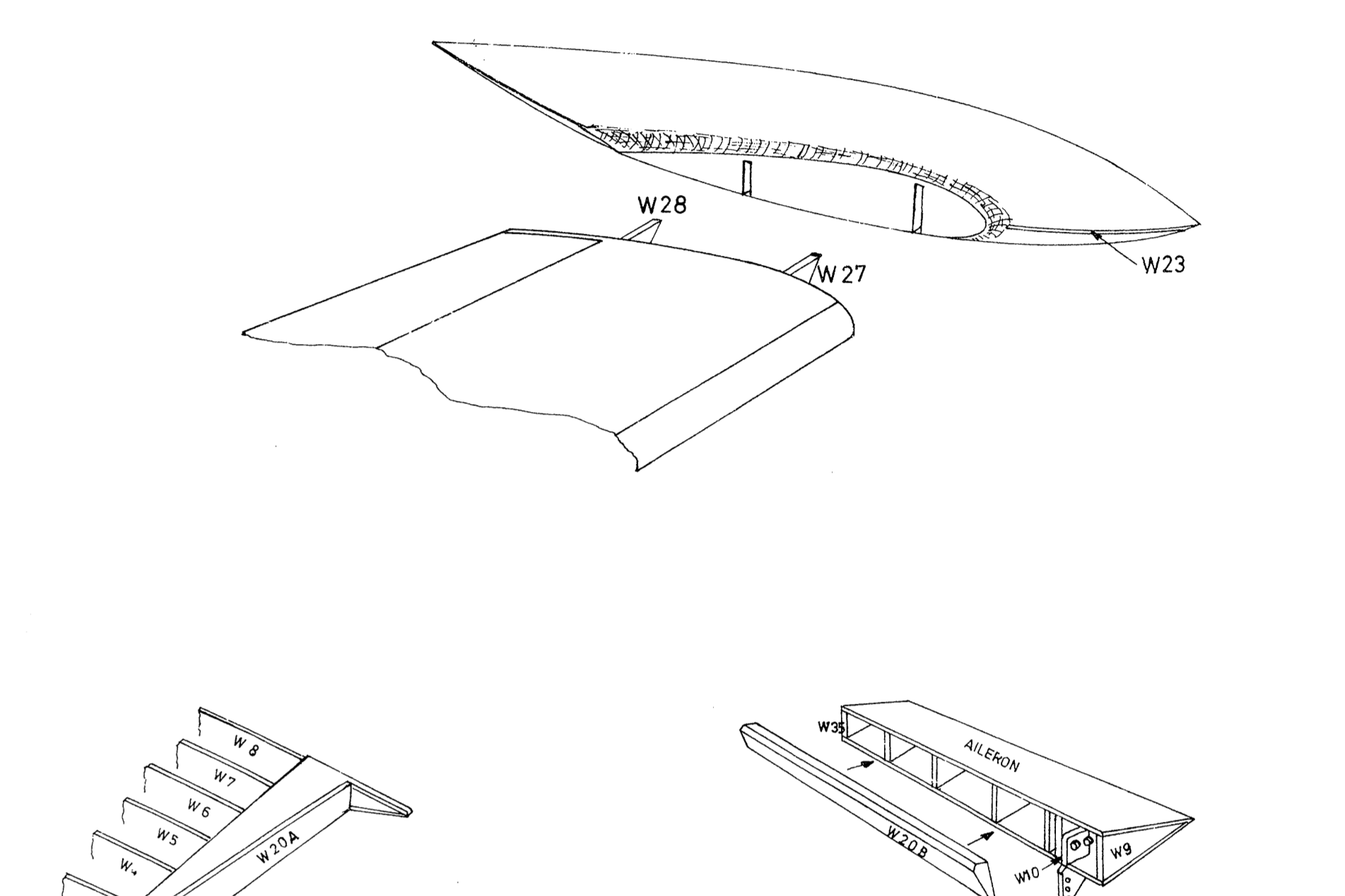
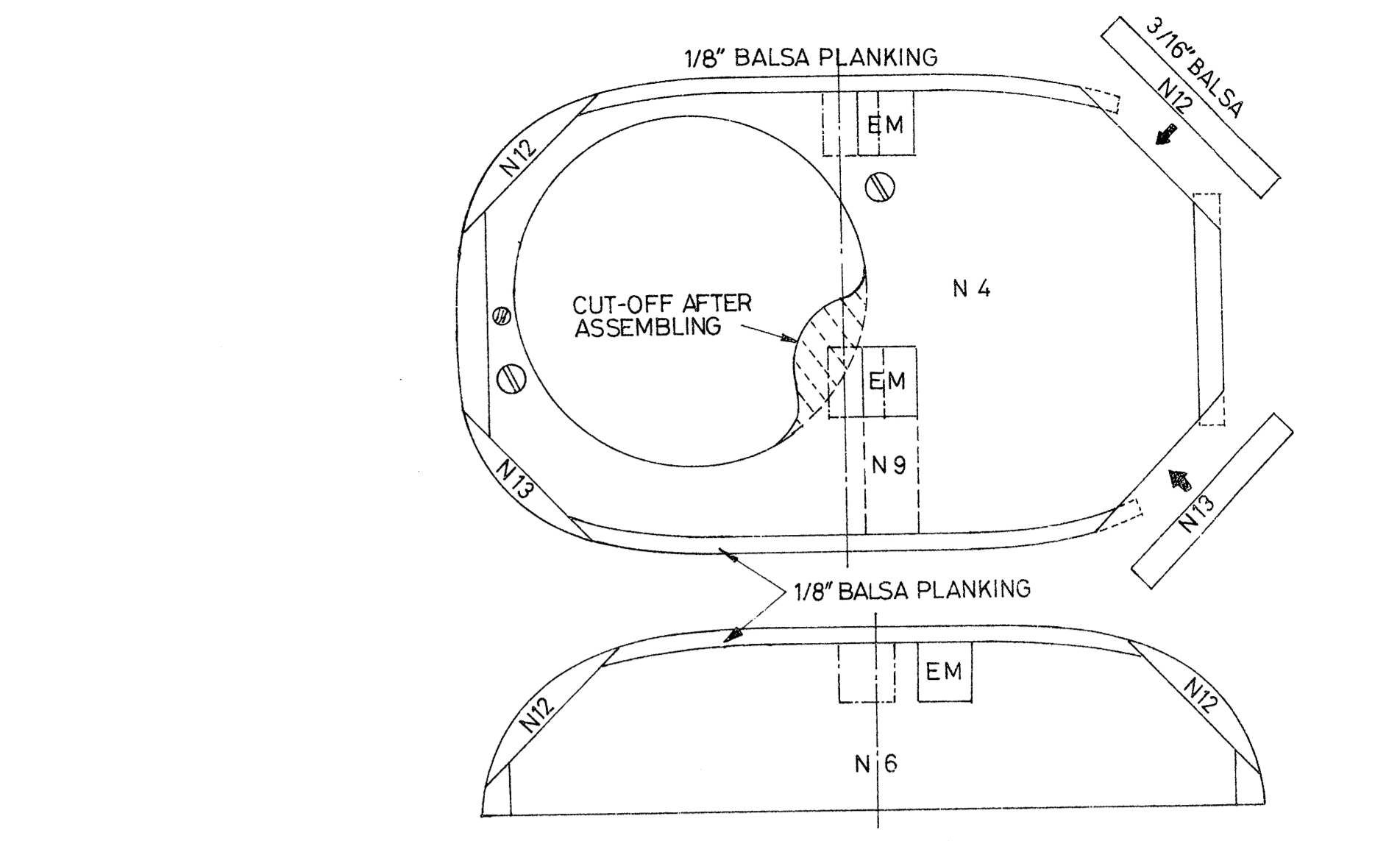
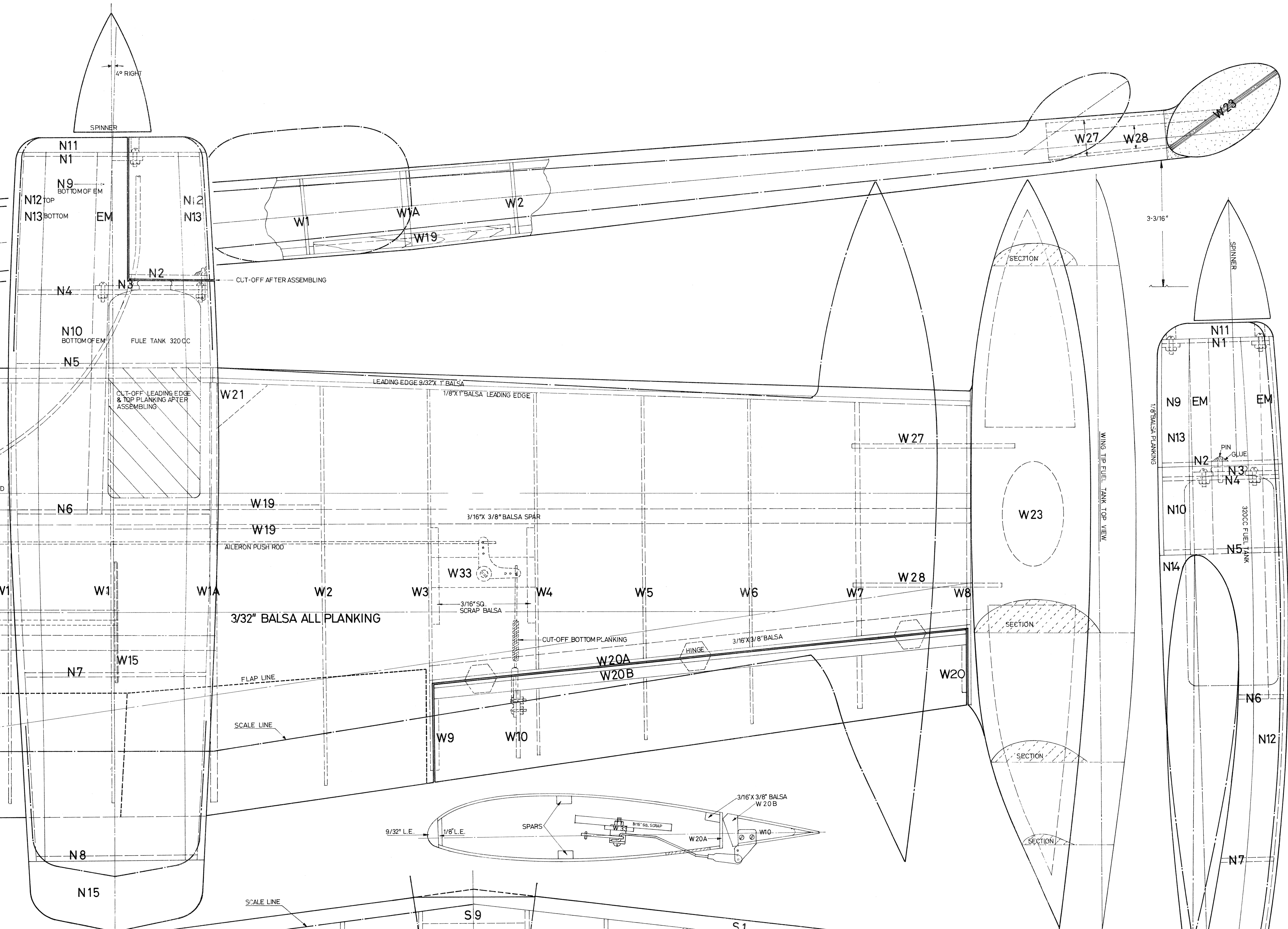
Cessna 310Q

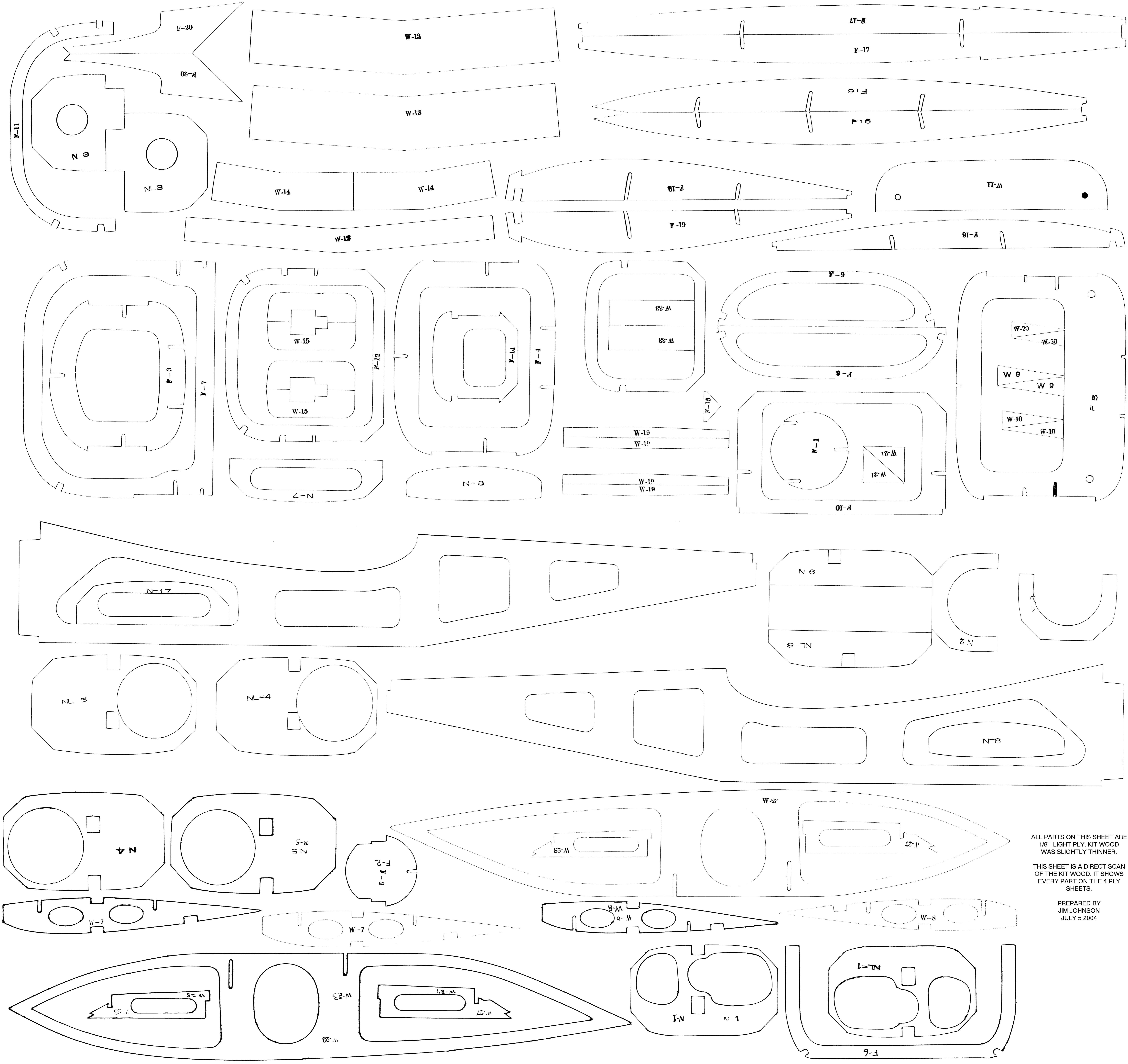


SCALE	1-3/4"=1'-0"
LENGTH	52-1/2"
WING SPAN	72-7/8" (SCALE 64-9/16")
WING AREA	725 SQ. IN.
WEIGHT	9-10 LB.
ENGINE	35-61 TWIN
DESIGNED BY	M. R. M.



LEFT ENGINE NACELLE

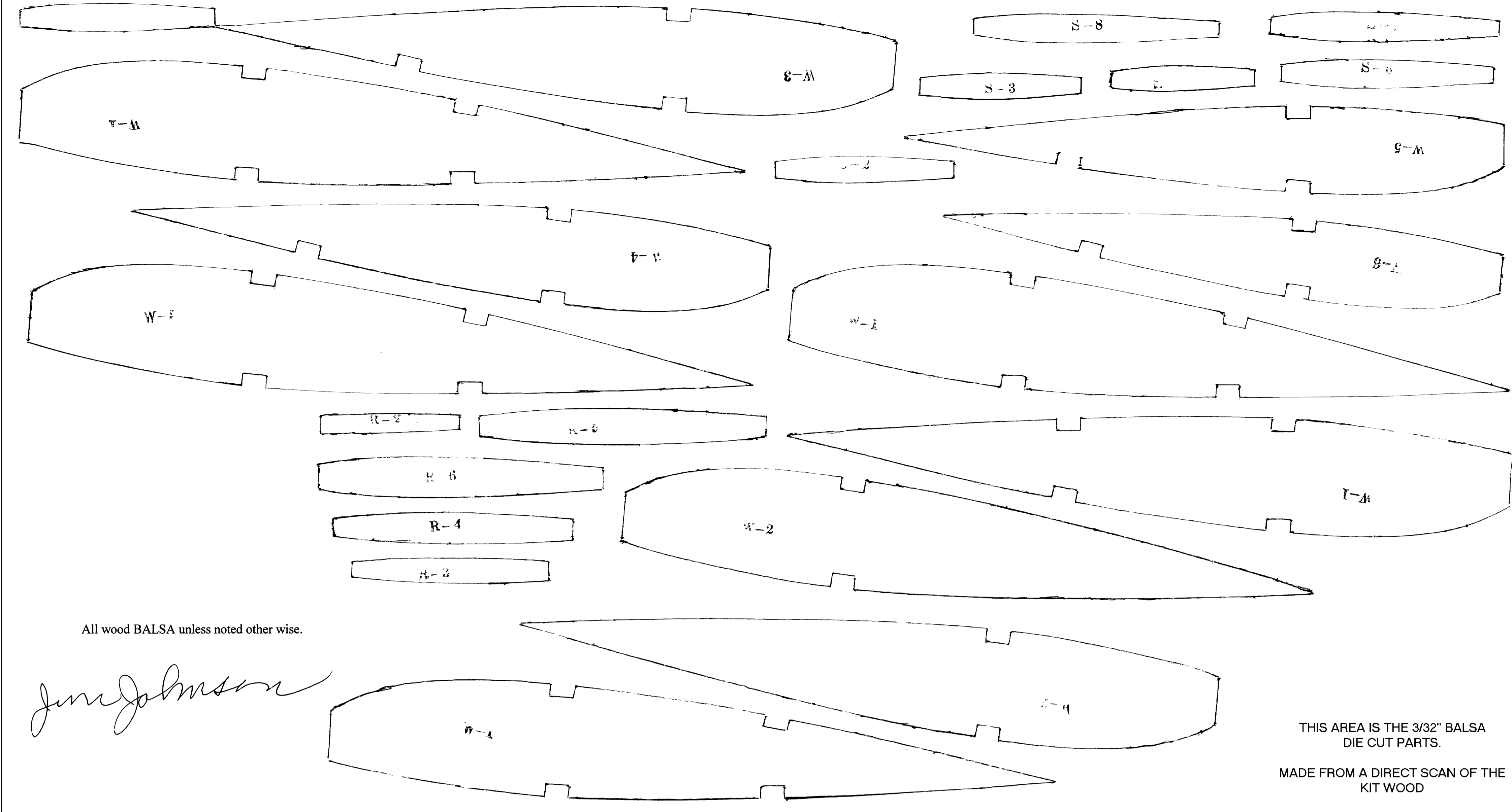
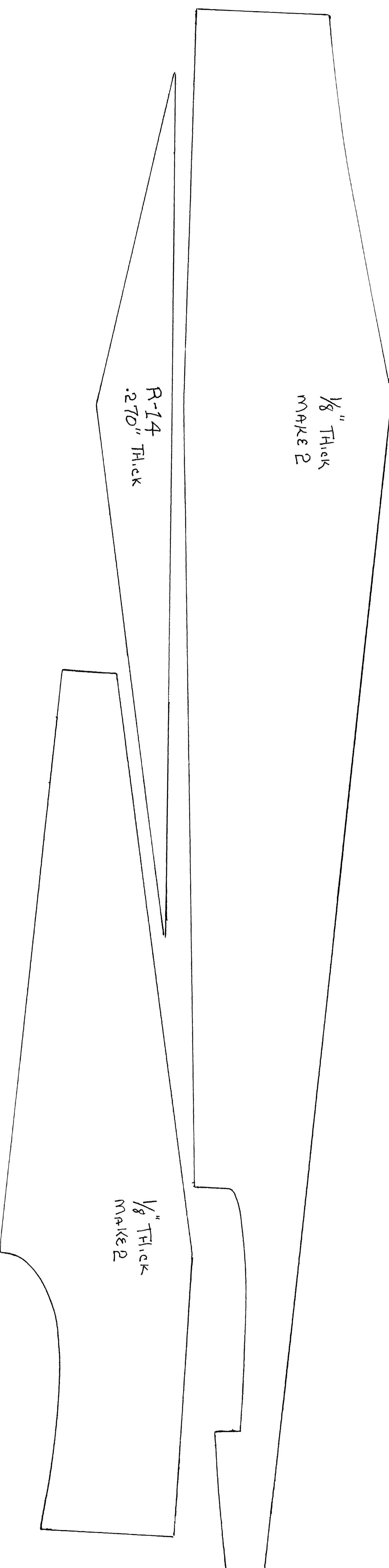




ALL PARTS ON THIS SHEET ARE
1/8" LIGHT PLY. KIT WOOD
WAS SLIGHTLY THINNER.

THIS SHEET IS A DIRECT SCAN
OF THE KIT WOOD. IT SHOWS
EVERY PART ON THE 4 PLY
SHEETS.

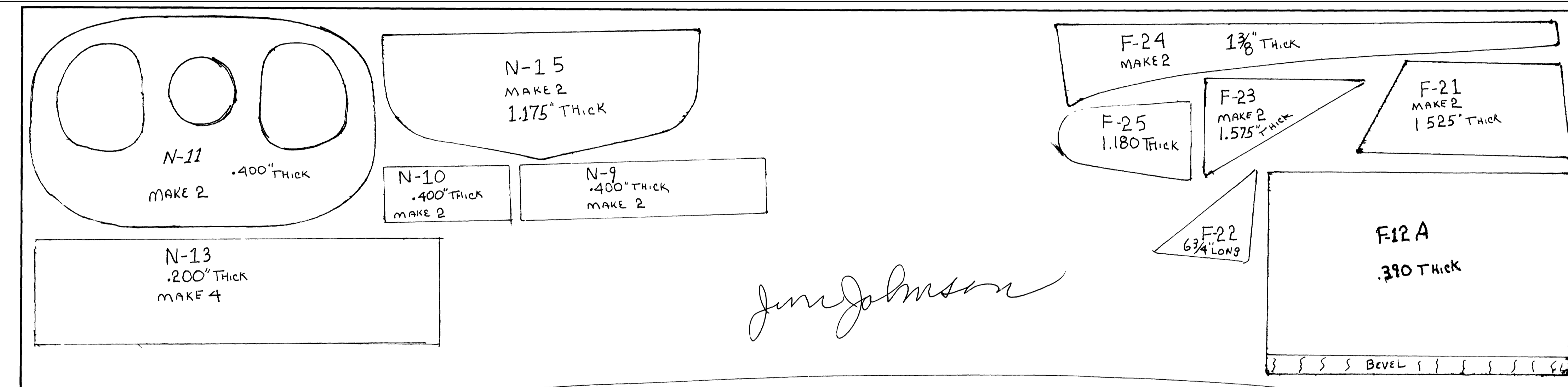
PREPARED BY
JIM JOHNSON
JULY 5 2004



All wood Balsa unless noted other wise.

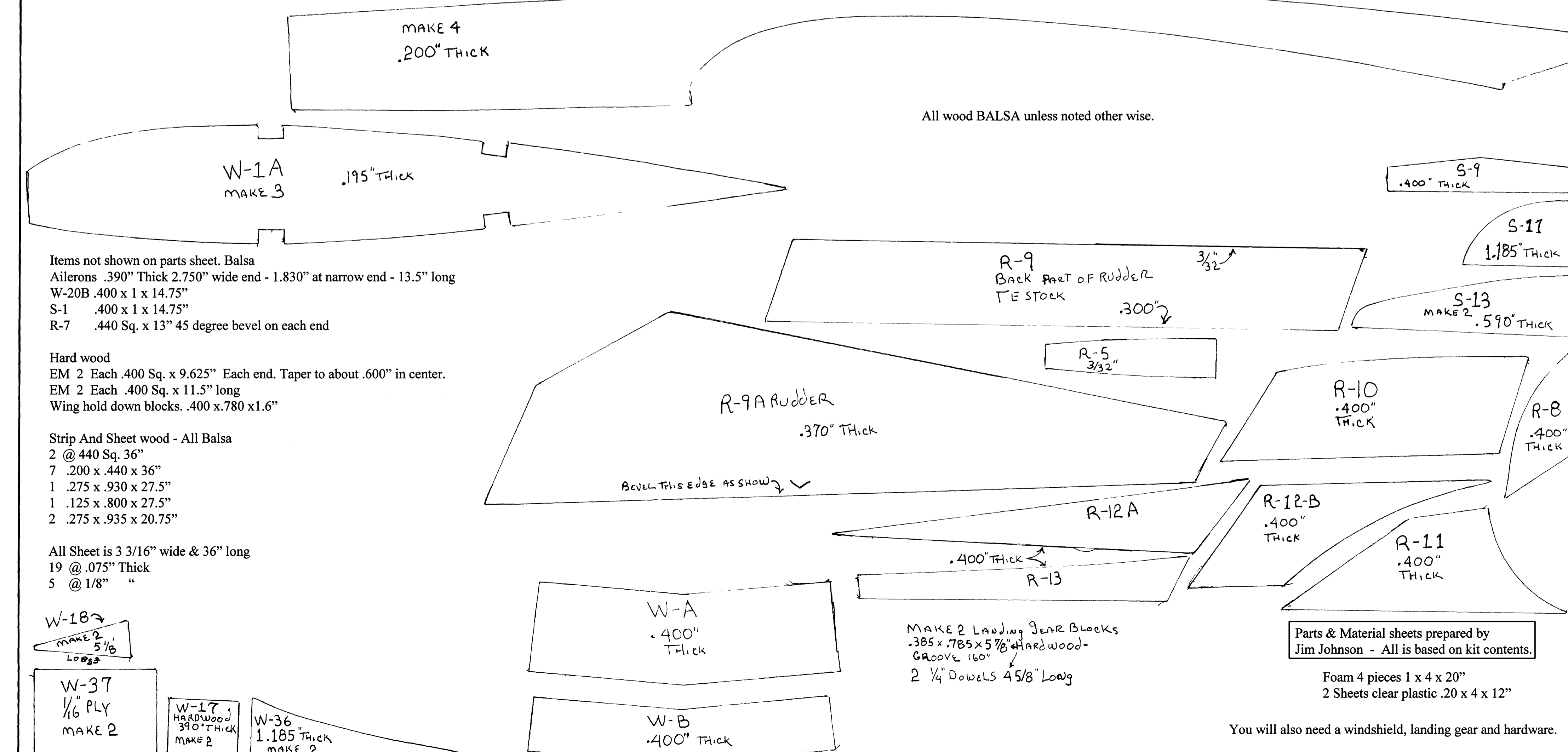
Jim Johnson

THIS AREA IS THE 3/32" Balsa DIE CUT PARTS.
MADE FROM A DIRECT SCAN OF THE KIT WOOD



Jim Johnson

All wood Balsa unless noted other wise.



Items not shown on parts sheet. Balsa
Ailerons .390" Thick 2.750" wide end - 1.830" at narrow end - 13.5" long
W-20B .400 x 1 x 14.75"
S-1 .400 x 1 x 14.75"
R-7 .440 Sq. x 13" 45 degree bevel on each end

Hard wood
EM 2 Each .400 Sq. x 9.625" Each end. Taper to about .600" in center.
EM 2 Each .400 Sq. x 11.5" long
Wing hold down blocks. 400 x .780 x 1.6"

Strip And Sheet wood - All Balsa
2 @ 440 Sq. 36"
7 .200 x .440 x 36"
1 .275 x .930 x 27.5"
1 .125 x .800 x 27.5"
2 .275 x .935 x 20.75"

All Sheet is 3 3/16" wide & 36" long
19 @ .075" Thick
5 @ 1/8" "

W-18
MAKE 2
5/16"
LONG

W-37
1/16" PLY
MAKE 2

W-17
HARDWOOD
3/32" THICK
MAKE 2

W-36
1.185 THICK
MAKE 2

W-A
.400" THICK

W-B
.400" THICK

MAKE 2 Landing Gear Blocks
.385 x .785 x 5 3/8" HARDWOOD -
GROOVE 160"
2 1/4" Dowels 4 5/8" Long

Parts & Material sheets prepared by
Jim Johnson - All is based on kit contents.

Foam 4 pieces 1 x 4 x 20"
2 Sheets clear plastic .20 x 4 x 12"

You will also need a windshield, landing gear and hardware.