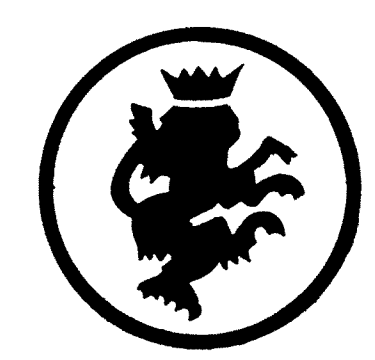
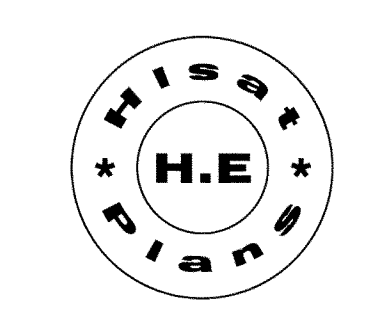


BLERIOT XI

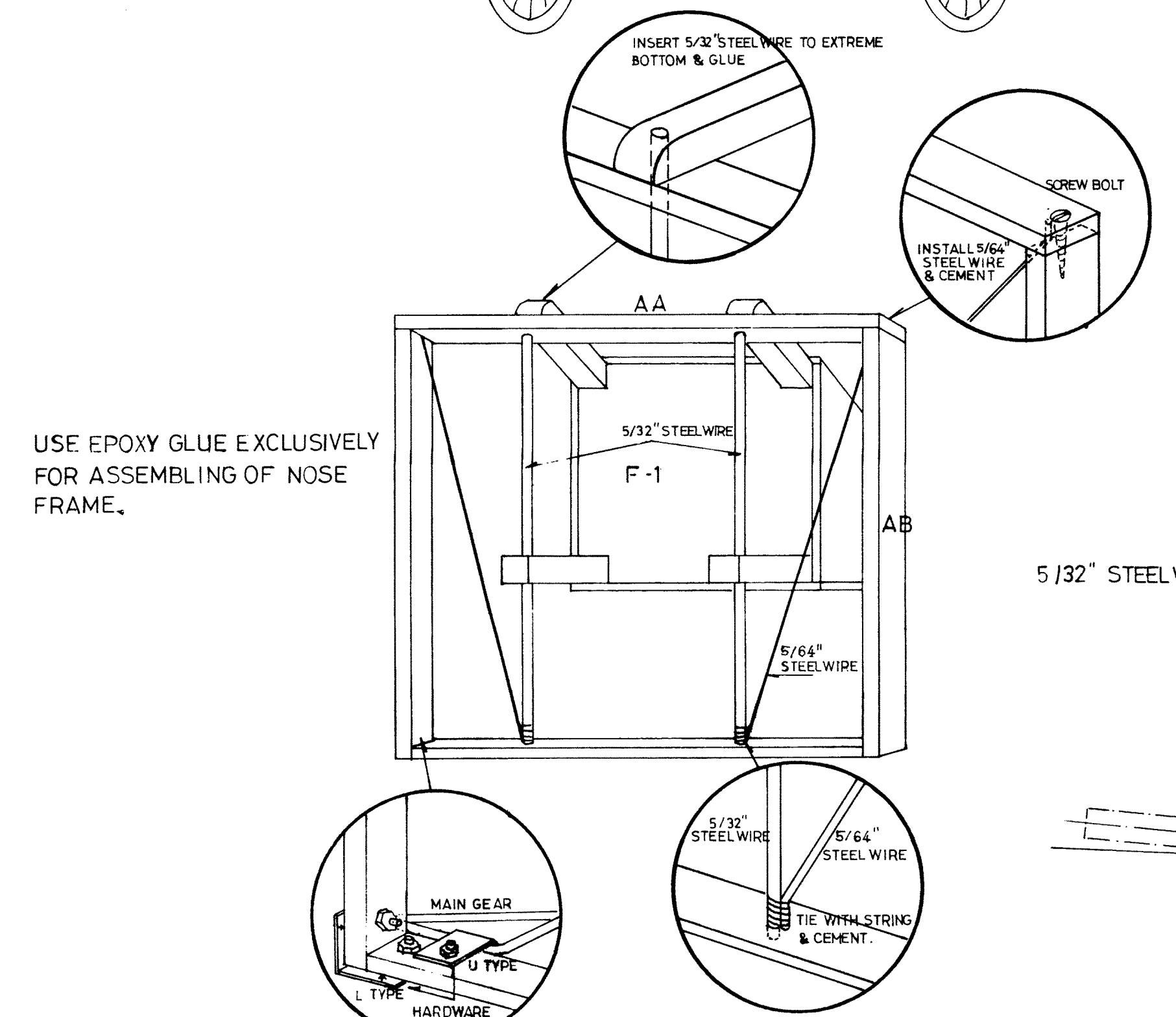
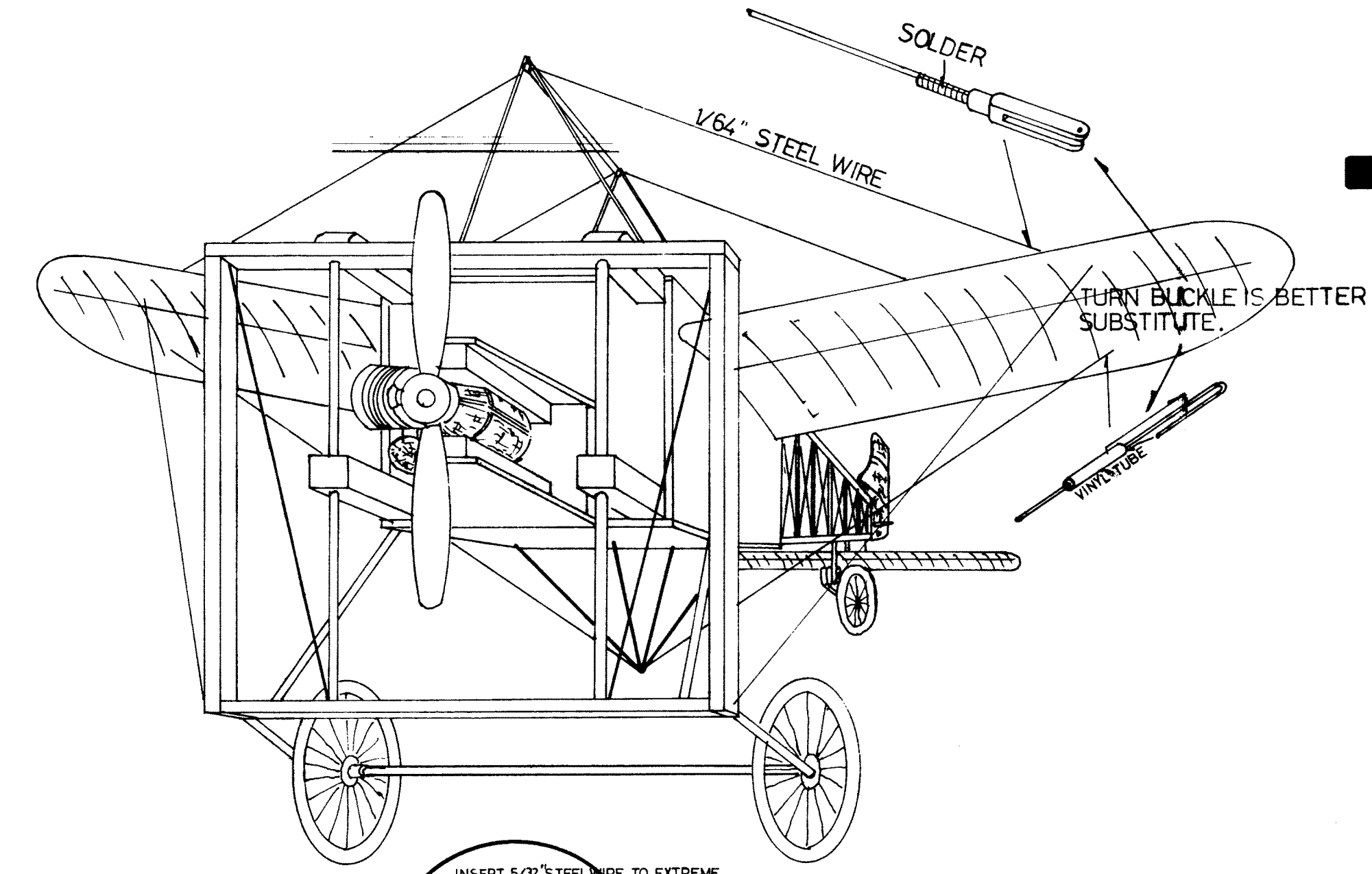


Royal Products Corporation

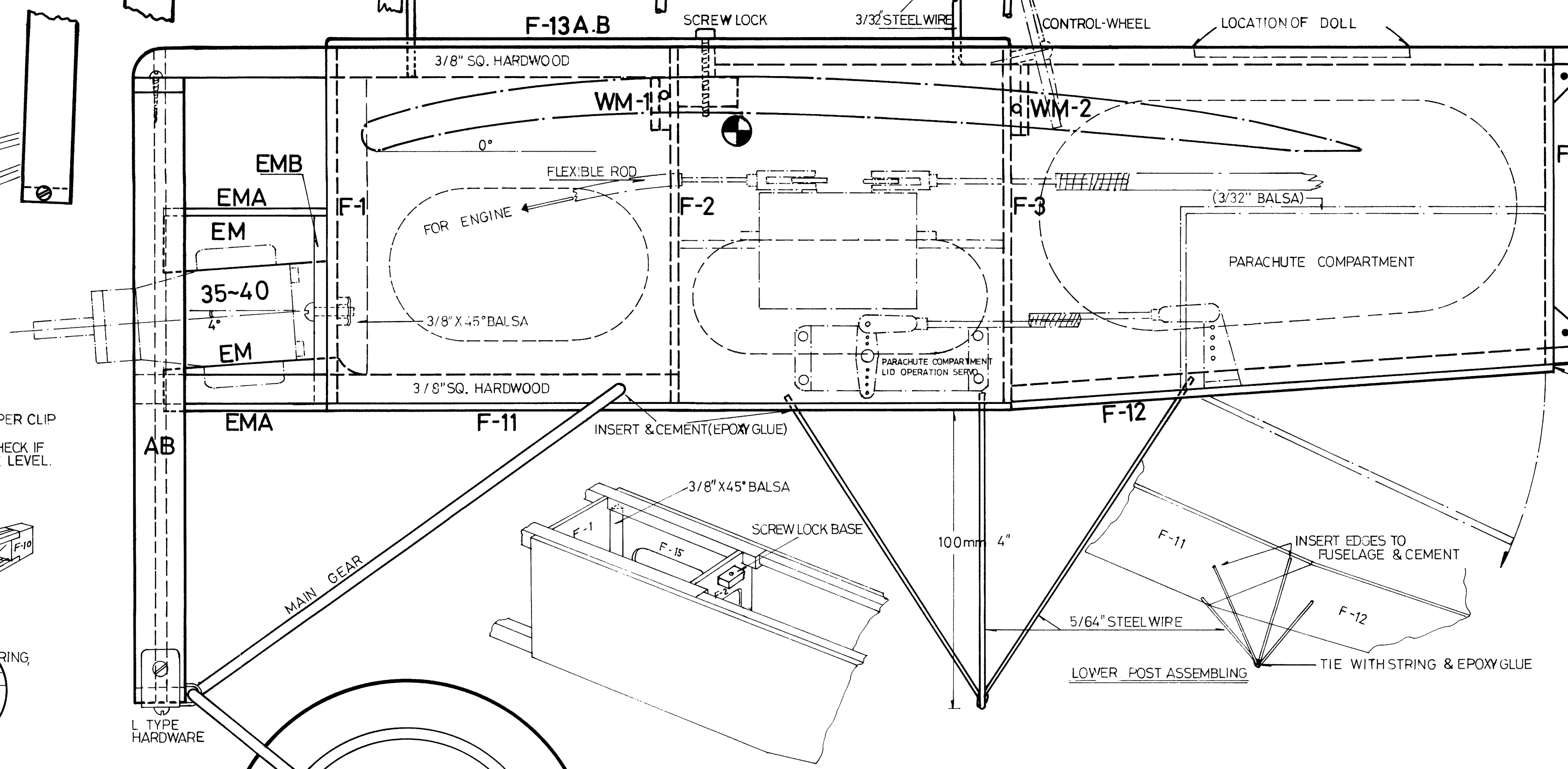
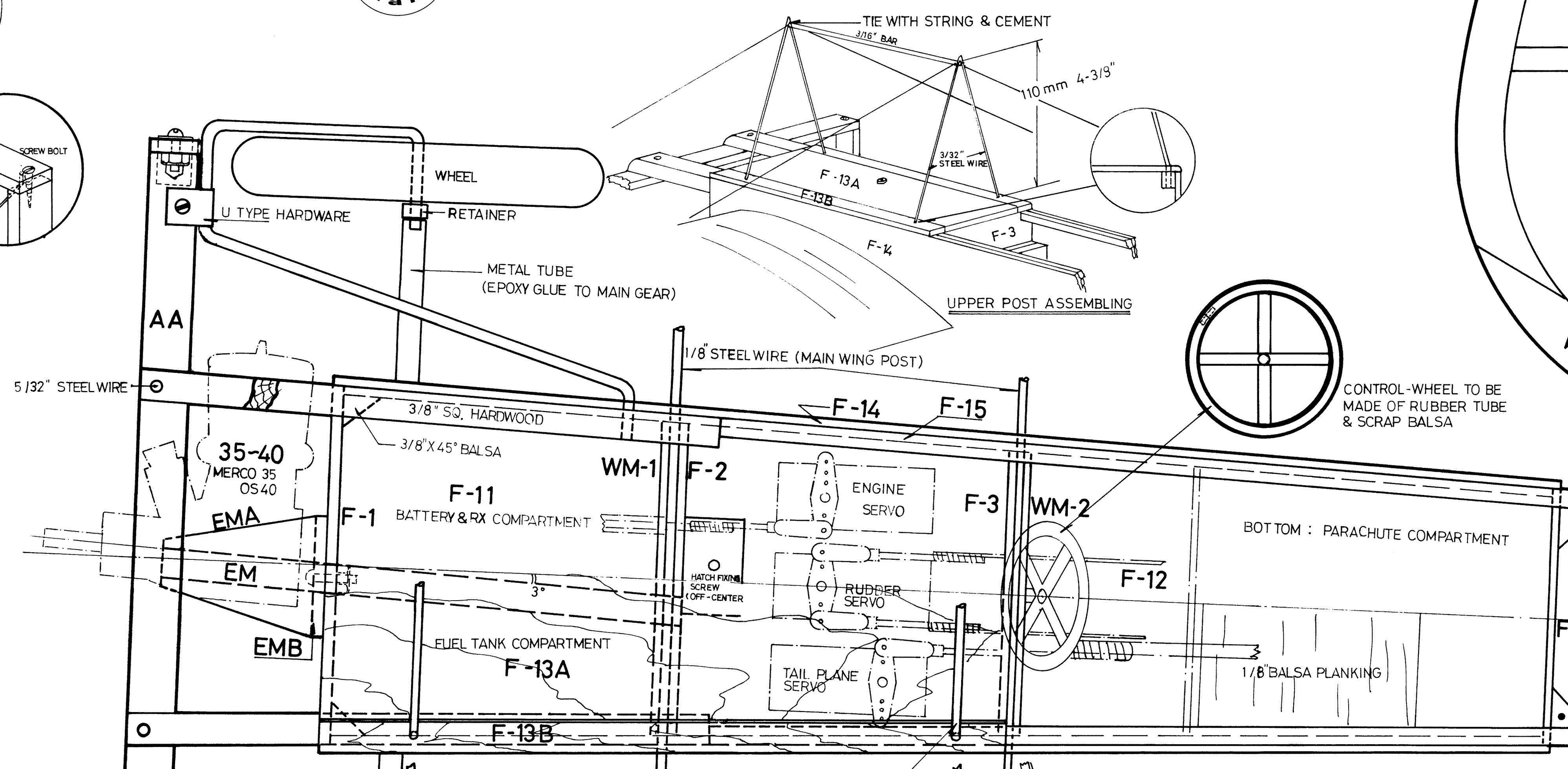


SCALE 1-7/8"=1'

LENGTH 47-3/4"
 WING SPAN 51-9/16"
 WING AREA 564 SQ. IN.
 WEIGHT 45-60 LB.
 ENGINE 35-40 (MERCOS OS)
 CONTROL 3-4 CH.
 Designed By M.R.M.



USE EPOXY GLUE EXCLUSIVELY FOR ASSEMBLING OF NOSE FRAME.



PILOT & PARACHUTE

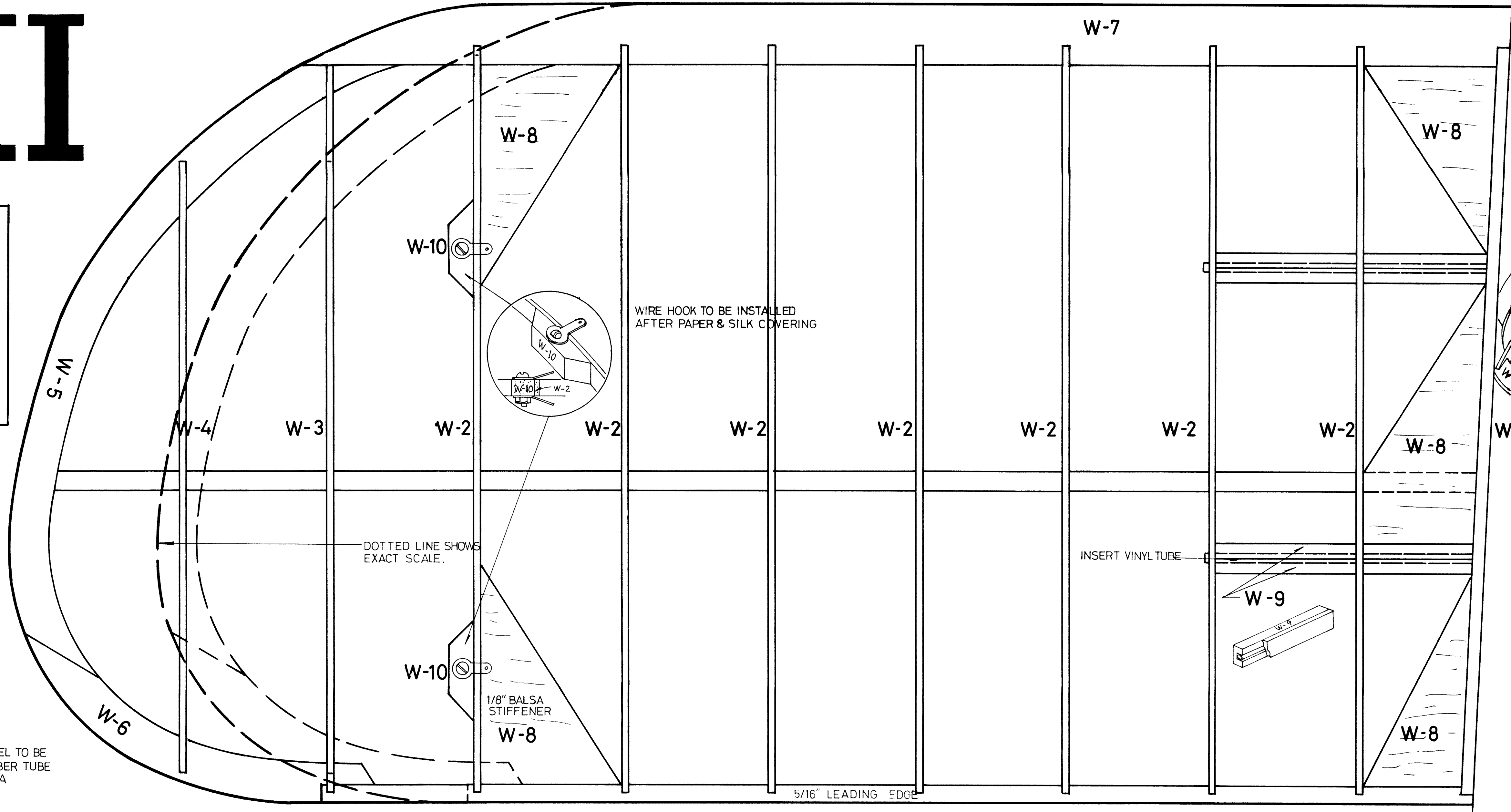
EQUIPMENT NEEDED: A 2" SCALE HEAD & SHOULDERS PILOT AND A ROYAL SMALL PARACHUTE. THE PARACHUTE DROPPING SYSTEM AS ILLUSTRATED ON THE PLANS, BUT THE THROTTLE SERVO MAY BE USED TO ACTUATE THE COMPARTMENT DOOR RATHER THAN A SEPARATE SERVO. SINCE BALANCE IS IMPORTANT, PAY SPECIAL ATTENTION TO THE PLACEMENT OF YOUR EQUIPMENT.

FLYING HINTS

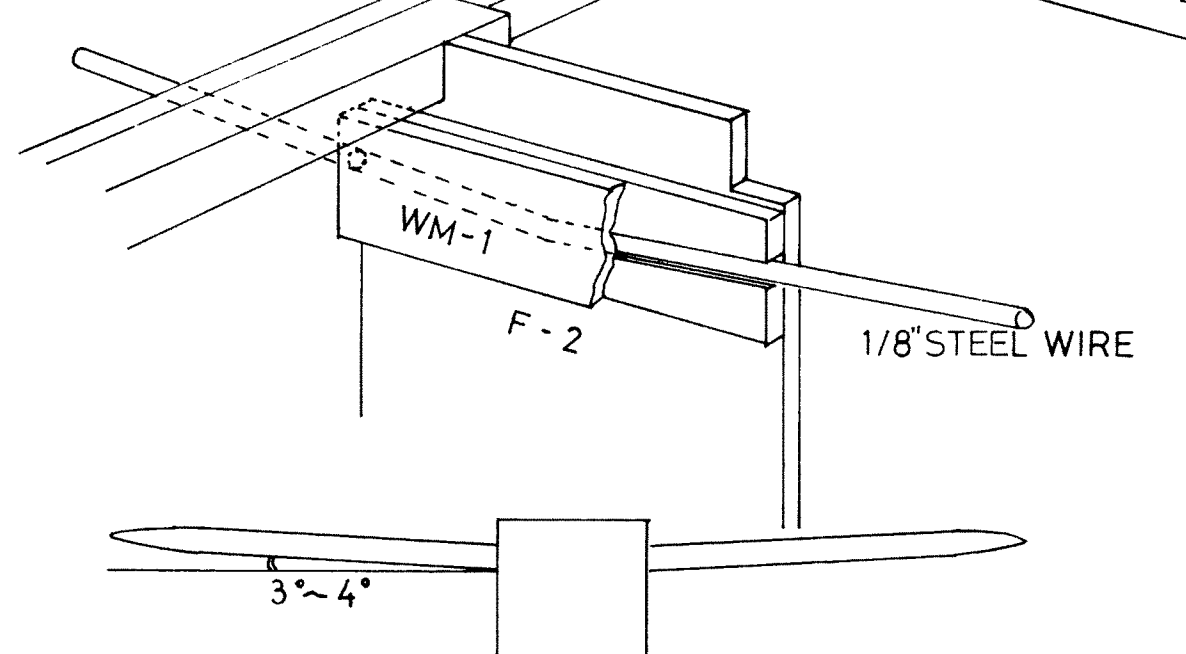
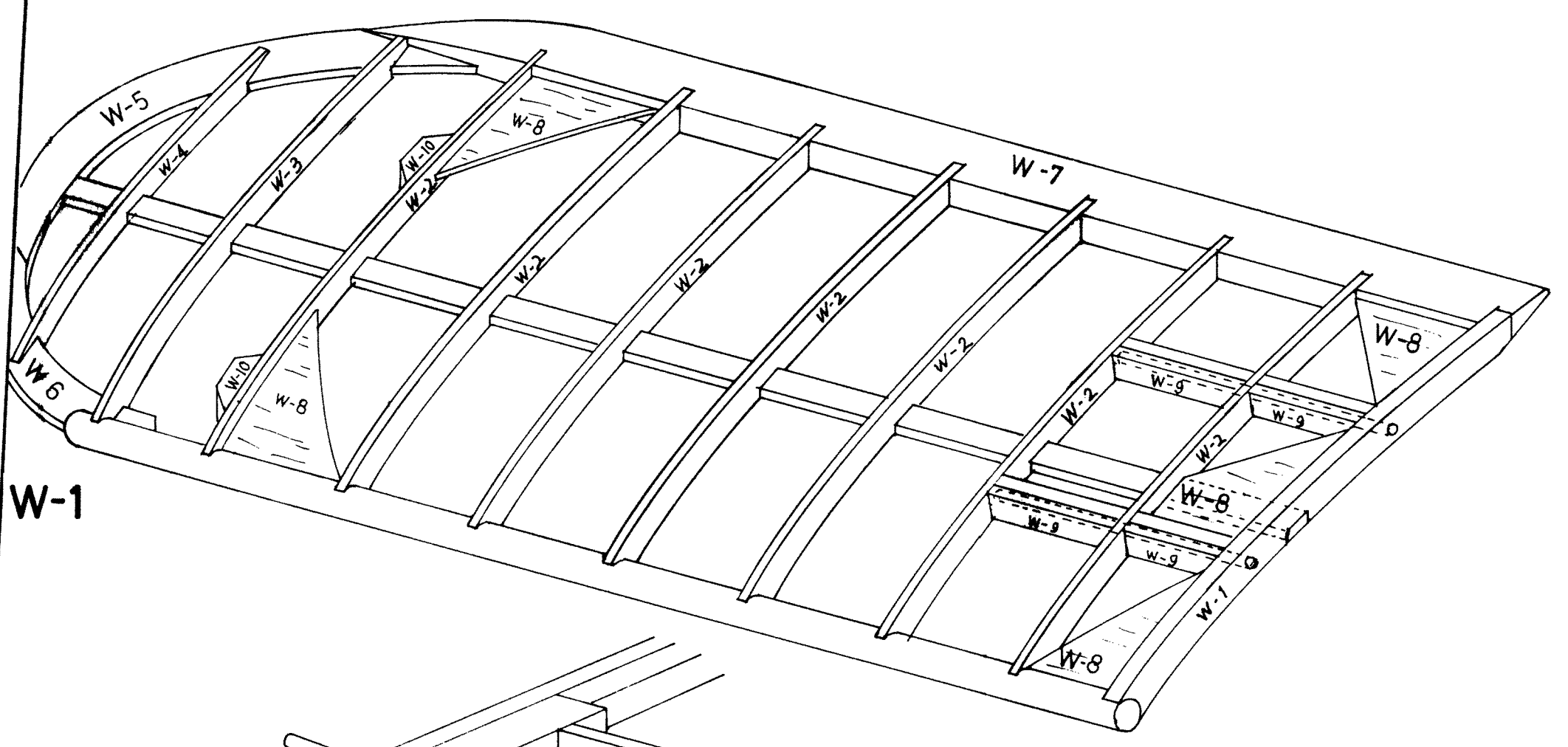
NO SPECIAL TECHNIQUE IS REQUIRED DURING TAKE-OFF OR GENERAL FLIGHT. WHEN LANDING, HOWEVER, WE DO SUGGEST THAT YOU MAINTAIN A SLIGHTLY GREATER AIR SPEED THAN NORMAL. ONCE YOU HAVE DESCENDED TO AN ALTITUDE OF 3 OR 4 FEET, THEN RETARD YOUR THROTTLE COMPLETELY AND LAND THE AIRCRAFT. UNTIL YOU BECOME USED TO THE HANDLING CHARACTERISTICS OF A FLYING STABILIZER, WE SUGGEST YOU LIMIT ITS TRAVEL TO ABOUT 5°. THE VERTICAL STABILIZER SHOULD ALSO BE LIMITED TO 5°-6° DURING THE LEARNING STAGE.

APPLICATION OF STEELWIRE & VINYL TUBE

1/16" X 1/16" STEEL WIRE	1	TAIL PLANE
5/64" X 8"	2	NOSE FRAME
5/64" X 1/8"	2	POST (FUSELAGE LOWER PART)
3/32" X 10-3/8"	2	POST (FUSELAGE UPPER PART)
3/32" X 10-3/8"	1	TAIL WHEEL
1/8" X 10-5/8"	2	WING POST
5/32" X 8-23/32"	2	NOSE FRAME
1/64" X 19-3/4"	1	MAIN WING WIRING
METAL TUBE		MAIN GEAR LUNCTION
VINYL TUBE (THICK)		MAIN WING STEELWIRE RECEPTION
VINYL TUBE (THIN)		TAIL PLANE & WIRING RETAINER



HINTS ON COVERING THE LOWER SIDE OF THE WING AND STAB
 USING SILK OR SILON: LIGHTLY SAND THE ENTIRE WING PANNEL AND THEN APPLY A LIGHT COAT OF DOPE. BEFORE IT IS ALLOWED TO DRY, LAY YOUR MOISTENED COVERING MATERIAL IN PLACE AND SMOOTH IT TO CONFORM TO THE WING'S CAMBER. HOLD IN PLACE BY PINNING STRIPS OF 1/16" X 1/4" Balsa ALONG THE WING WING RIBS, THUS HOLDING THE COVERING FIRMLY IN PLACE. REMOVE THE PINS AND Balsa STRIPS AFTER DRY AND THEN DOPE AS NORMAL.



TIE THE PLASTIC TUBING OF ELEV. HARNESS TO S-1 & 1/4" SQ. HARDWOOD WITH STRING & CEMENT. ELEV. HARNESS SHOULD BE FIXED TO S-1 BEFOREHAND. THEN MOUNT TO TAIL PLANE. THE 0° ADJUSTMENT OF TAIL PLANE SHOULD BE DONE AFTER SERVO ROD CONNECTION.

