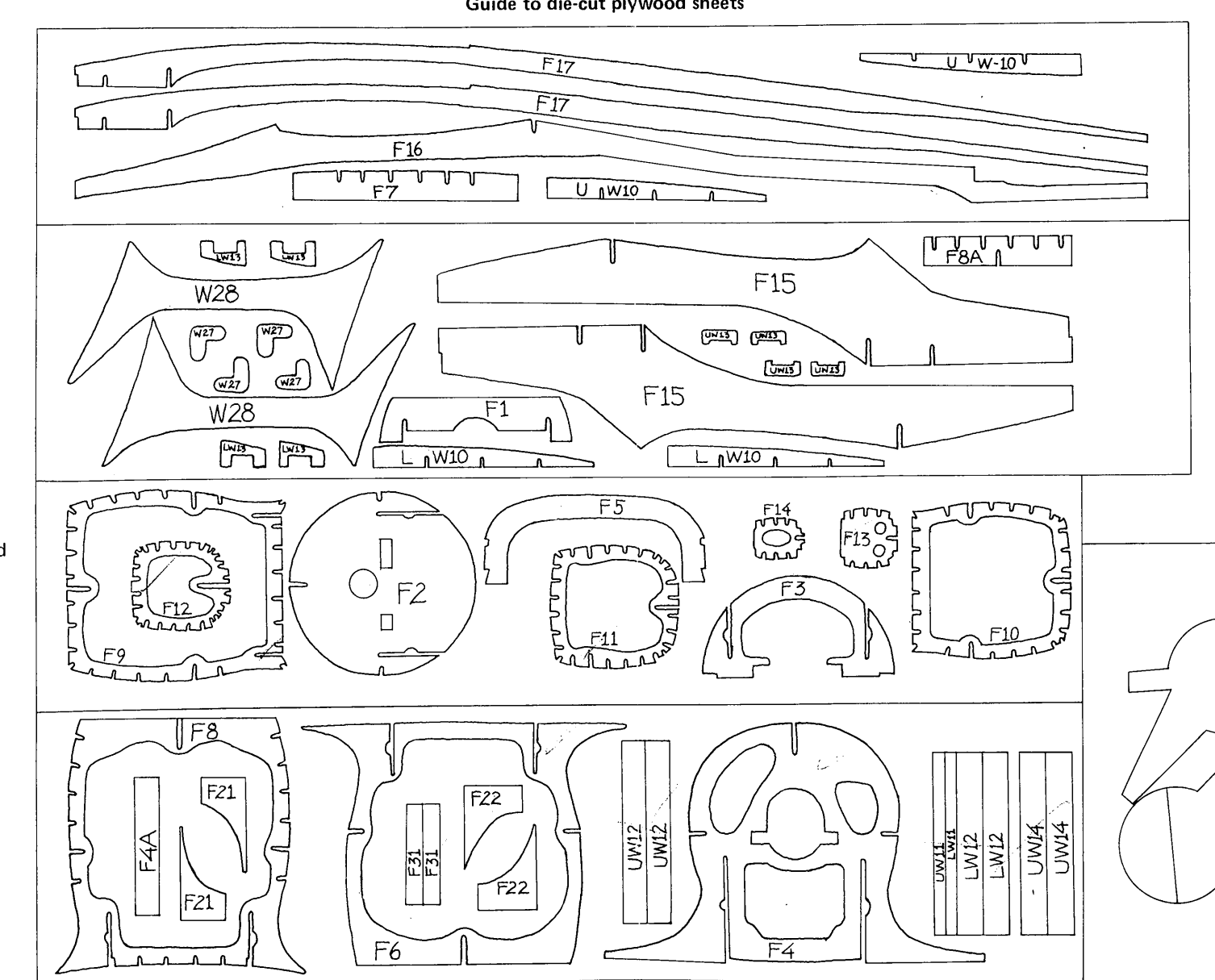


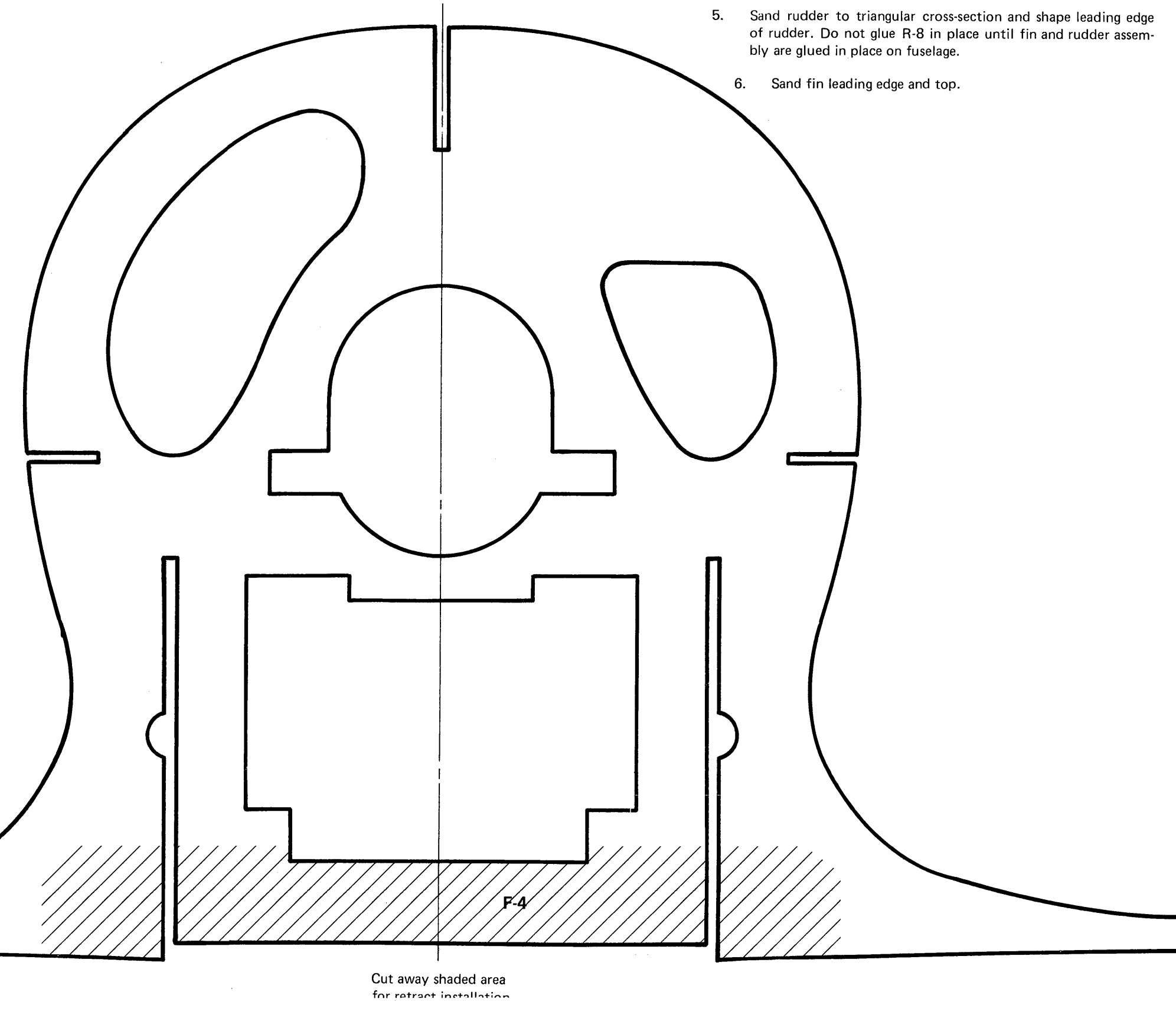
BEECHCRAFT D-17 STAGGERWING

**ROYAL
PRODUCTS CORP.**

- FIN AND RUDDER**
1. Build perimeter from pieces R-1, R-2, and R-6. Glue 3/8" thick scrap balsa reinforcement at R-1/R-6 joint. Cut upper two ribs from 3/32" x 3/8" balsa and glue in place. Cut lower ribs from 3/32" x 1/8" stock and glue in place. Sheet lower section with 3/32" stock and glue in place. Sheet lower section with 3/32" sheet stock. Only do one side at this time.
 2. Fit R-4 to bench. Glue R-5 on back edge. Glue one R-8 and one R-11 in place. Cut rib from 3/32" x 3/16" stock and glue in place. Allow to dry.
 3. When Fin is dry, flip over and sheet other side.
 4. When Rudder is dry, flip over and sheet other side. Butt glue R-3 in place. Glue R-7 in place.
 5. Sand rudder to triangular cross section and shape leading edge of rudder. Do not glue R-8 in place until fin and rudder assembly are glued in place on fuselage.
 6. Sand fin leading edge and top.



SCALE PROP



RETRACT MODIFICATION, FUSELAGE

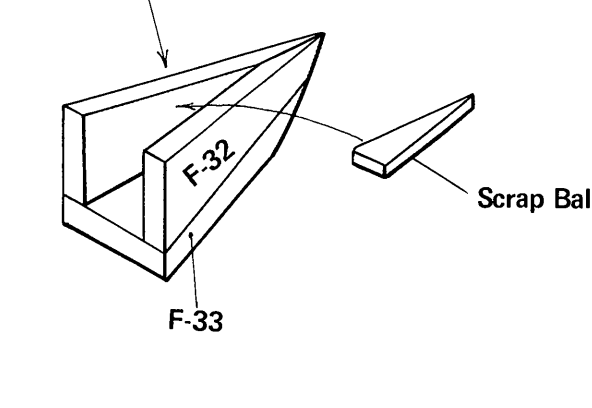
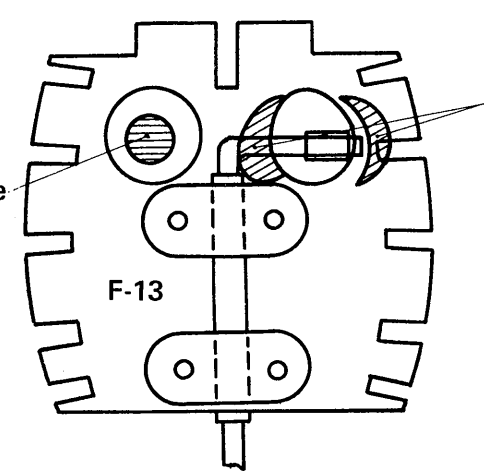
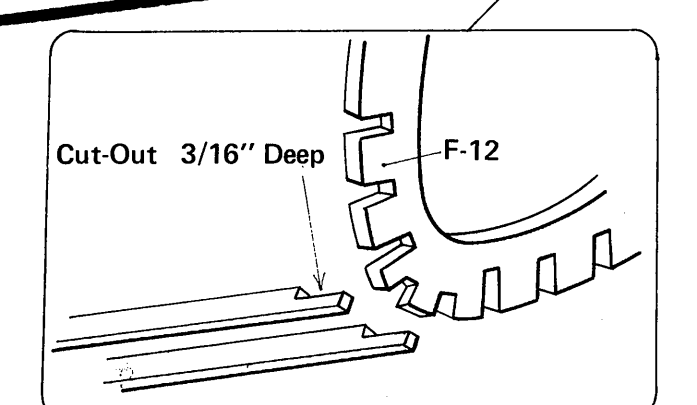
Fairing on wing to lower retract mechanism
NOTE: If a completely enclosed retract installation is desired, check on the availability of streamline retract mechanisms.

NOTE: Rear of wheel cover is left unattached for retract gear installation.

This area must be added to accept wing leading edge. Use Balsa wood covered with fiberglass cloth for necessary strength. Note extension on underside view for wheels and wheel covers.

For Elevator Adjustment it is convenient if F-32 is made removable by means of a dowel & wood screws

Elelevator Rod Outlet Hole
Cut-Out So That Tail Wheel Bracket Does Not Hit



FA To Be Made of Paper or Aluminum Sheet

Wood Screw Lock

Wood Screw Lock

Wood Screw Lock

Wood Screw Lock

A-A Cross Section

F-35A

F-35A

F-35A

F-35A

F-35A

F-35A

F-35A

F-35A

F-35A

F-35A

F-35A

F-35A

F-35A

F-35A

F-35A

F-35A

F-35A

F-35A

F-35A

F-35A

F-35A

F-35A

F-35A

F-35A

F-35A

F-35A

F-35A

F-35A

F-35A

F-35A

F-35A

F-35A

F-35A

F-35A

F-35A

F-35A

F-35A

F-35A

F-35A

F-35A

F-35A

F-35A

F-35A

F-35A

F-35A

F-35A

F-35A

F-35A

F-35A

F-35A

F-35A

F-35A

F-35A

F-35A

F-35A

F-35A

F-35A

F-35A

F-35A

F-35A

F-35A

F-35A

F-35A

F-35A

F-35A

F-35A

F-35A

F-35A

F-35A

F-35A

F-35A

F-35A

F-35A

F-35A

F-35A

F-35A

F-35A

F-35A

F-35A

F-35A

F-35A

F-35A

F-35A

F-35A

F-35A

F-35A

F-35A

F-35A

F-35A

F-35A

F-35A

F-35A

F-35A

F-35A

F-35A

F-35A

F-35A

F-35A

F-35A

F-35A

F-35A

F-35A

F-35A

F-35A

F-35A

F-35A

F-35A

F-35A

F-35A

F-35A

F-35A

F-35A

F-35A

F-35A

F-35A

F-35A

F-35A

F-35A

F-35A

F-35A

F-35A

F-35A

F-35A

F-35A

F-35A

F-35A

F-35A

F-35A

F-35A

F-35A

F-35A

F-35A

F-35A

F-35A

F-35A

F-35A

F-35A

F-35A

F-35A

F-35A

F-35A

F-35A

F-35A

F-35A

F-35A

F-35A

F-35A

F-35A

F-35A

F-35A

F-35A

F-35A

F-35A

F-35A

F-35A

F-35A

F-35A

F-35A

F-35A

F-35A

F-35A

F-35A

F-35A

F-35A

F-35A

F-35A

F-35A

F-35A

F-35A

F-35A

F-35A

F-35A

F-35A

F-35A

F-35A

F-35A

F-35A

F-35A

F-35A

F-35A

F-35A

F-35A

F-35A

F-35A

F-35A

F-35A

F-35A

F-35A

F-35A

F-35A

F-35A

F-35A

F-35A

F-35A

F-35A

F-35A

F-35A

F-35A

F-35A

F-35A

F-35A

F-35A

F-35A

F-35A

F-35A

F-35A

F-35A

F-35A

F-35A

F-35A

F-35A

F-35A

F-35A

F-35A

F-35A

F-35A

F-35A

F-35A

F-35A

F-35A

F-35A

F-35A

F-35A

F-35A

F-35A

F-35A

F-35A

F-35A

F-35A

F-35A

F-35A

F-35A

F-35A

F-35A

F-35A

F-35A

F-35A

F-35A

F-35A

F-35A

F-35A

F-35A

F-35A

F-35A

F-35A

F-35A

F-35A

F-35A

F-35A

F-35A

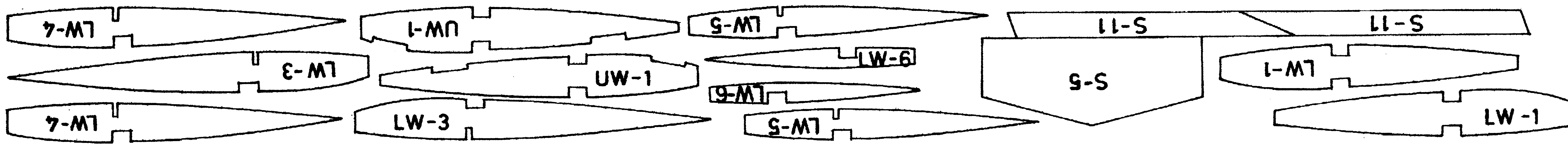
F-35A

F-35A

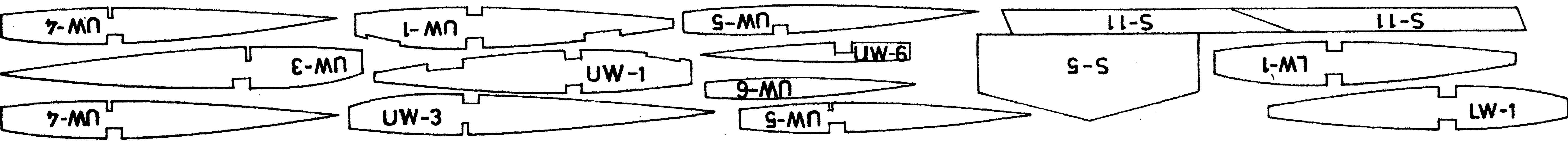
F-35A

BEACH CRAFT

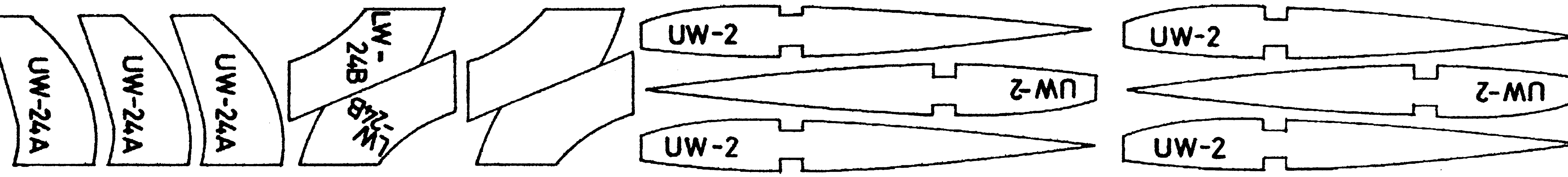
2mm パールサ Balsa (x1)



2mm パールサ Balsa (x1)



2mm パールサ Balsa (x2)



START ASSEMBLING AFTER REFERING THE DIE CUT Balsa AND PLYWOOD PARTS TO THE NUMBER ON THE PLANS.

BEFORE STARTING BUILDING

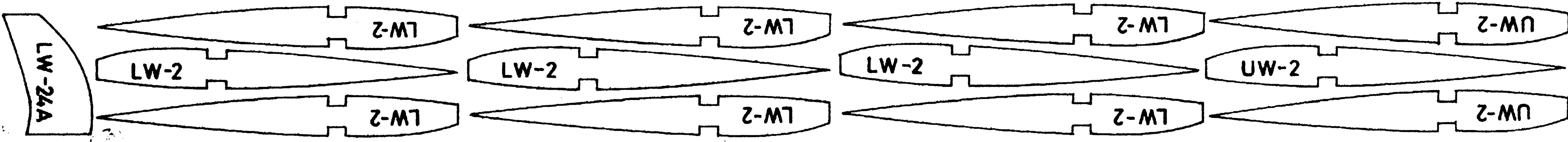
For better finish and flight performance, take time in reading building instruction and referring to the plans, and assemble in good order and correctly and carefully.

Cut off each part with cutter or razor blade avoiding damage, particularly on the jointing cut out and slot.

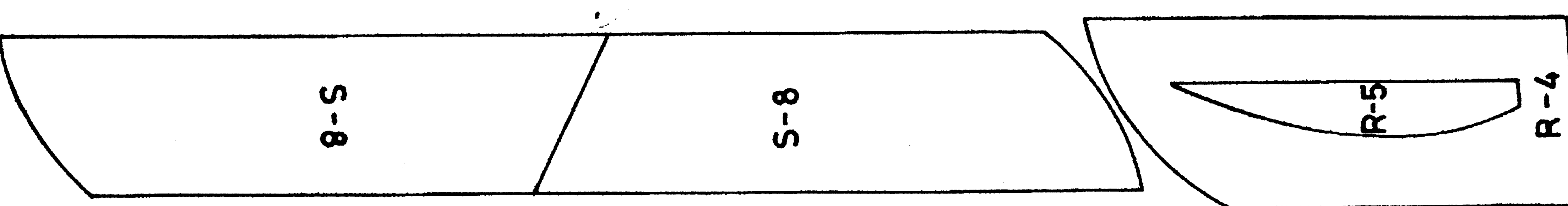
If necessary trim the parts for easier fitting. When cementing use thread, rubber band, pins, clothes clips etc.

Until cement sets for forming and working, cutter, balsa plane and/or file are to be used. Wood tip wrapped with sand paper can also be used as a file.

2mm パールサ Balsa (x2)



2mm パールサ Balsa (x1)



3mm パールサ Balsa (x1)

