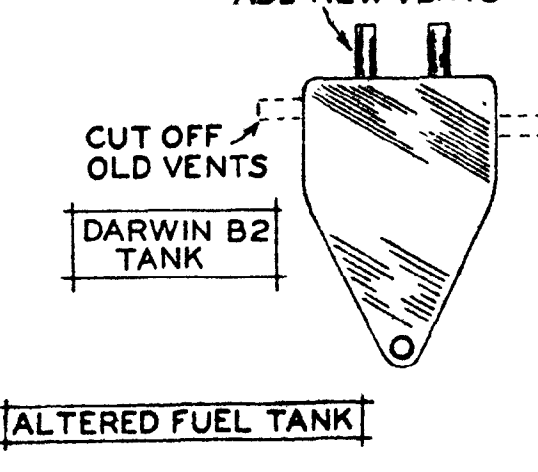


# DMECO'S LIVE WIRE KITTEN

FOR A GREAT NEW THRILL, 1/2A R/C FLYING!

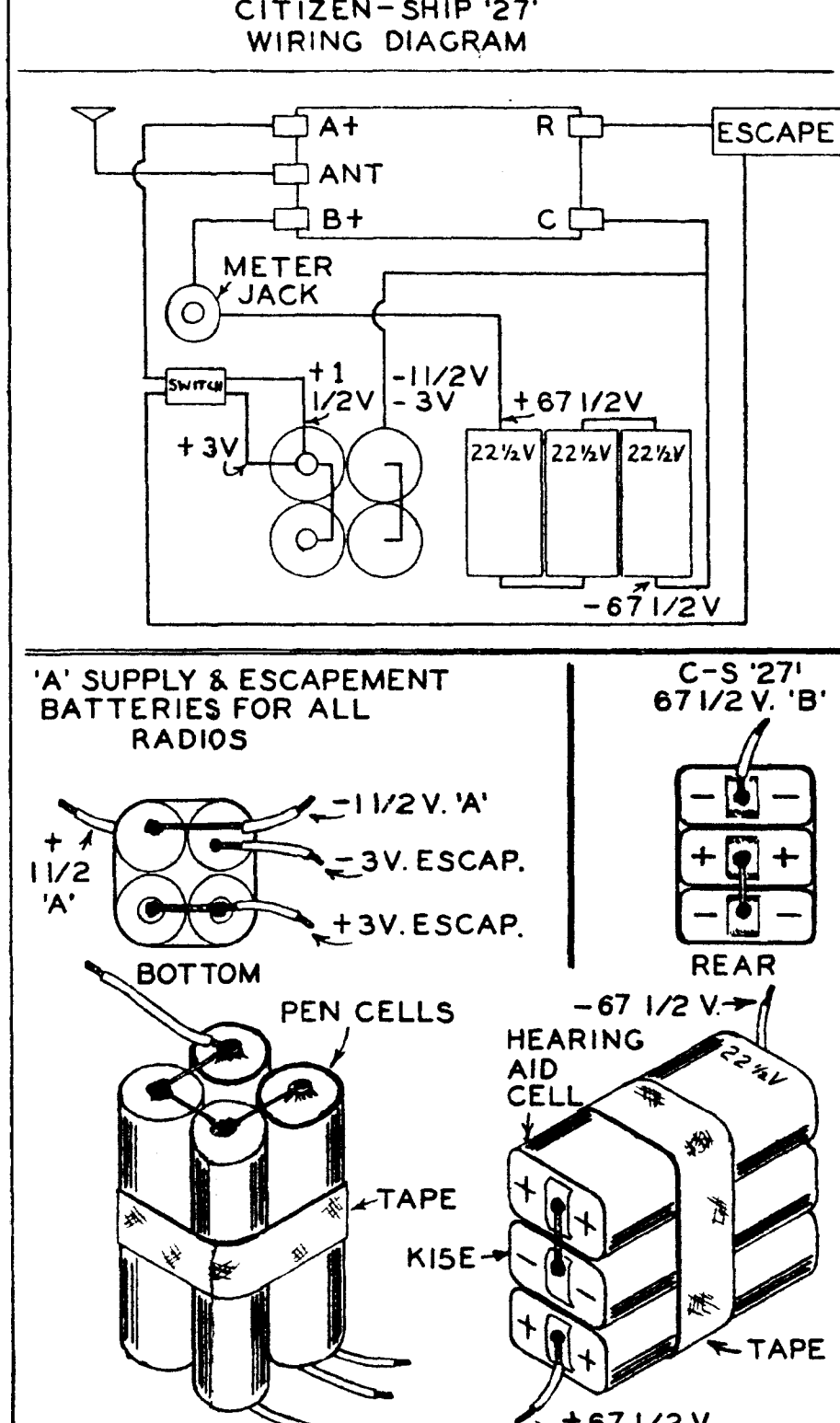
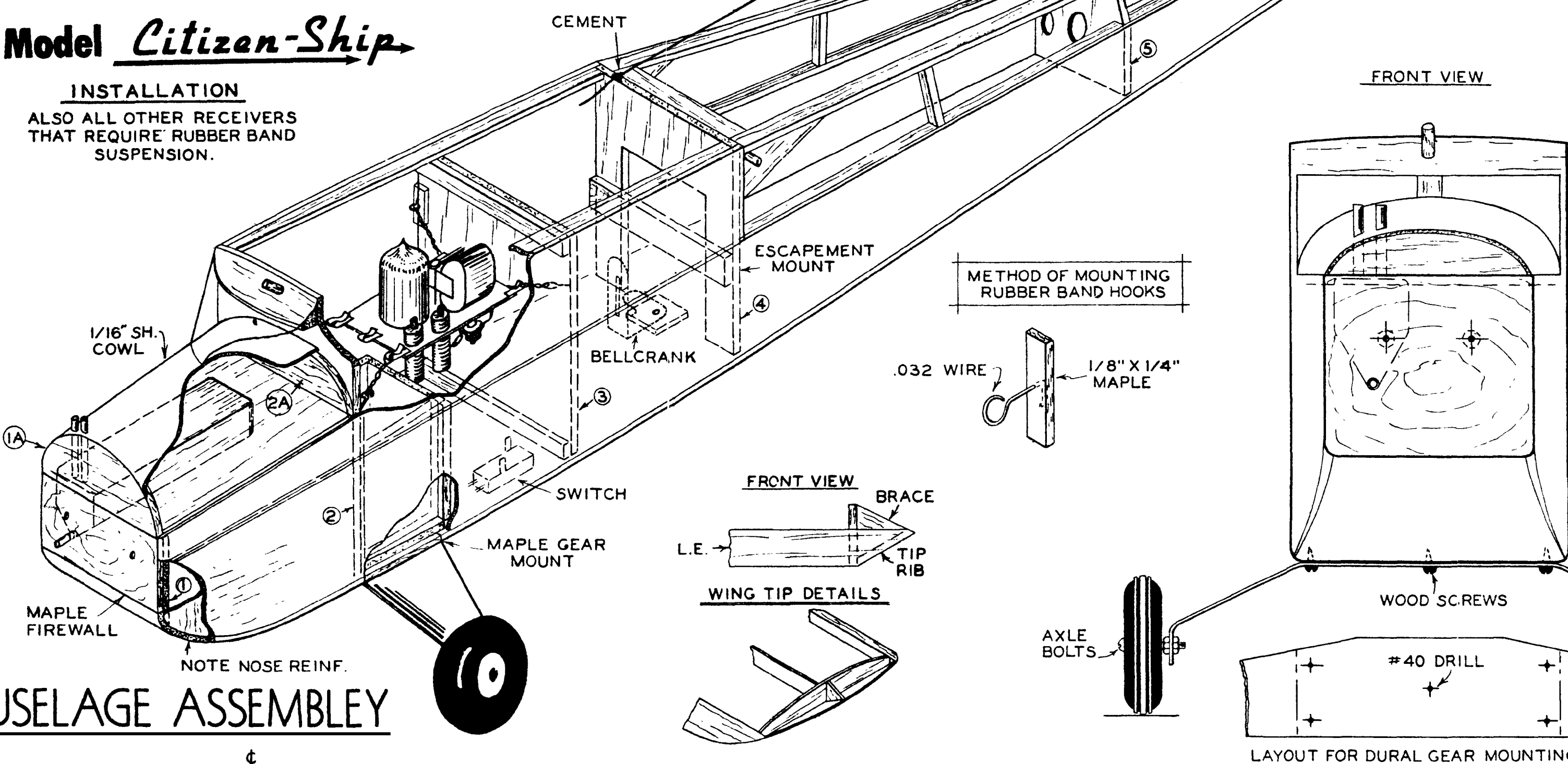
WING SPAN... 34"  
WING AREA... 220 SQ. IN.  
WING LOAD... 12.7 SQ. FT.  
WEIGHT WITH RADIO... 18 OZ.  
RADIO WEIGHT... 10 OZ.  
MODEL WEIGHT... 8 OZ.  
DESIGNED BY *W. B. PATRICK*  
© 1953 DMECO  
A PRODUCT OF THE DE BOLT MODEL ENG. CO.  
WILLIAMSVILLE, N.Y.

MAKE ANTENNA FROM WIRE TO LENGTH PRESCRIBED FOR YOUR PARTICULAR RECEIVER.

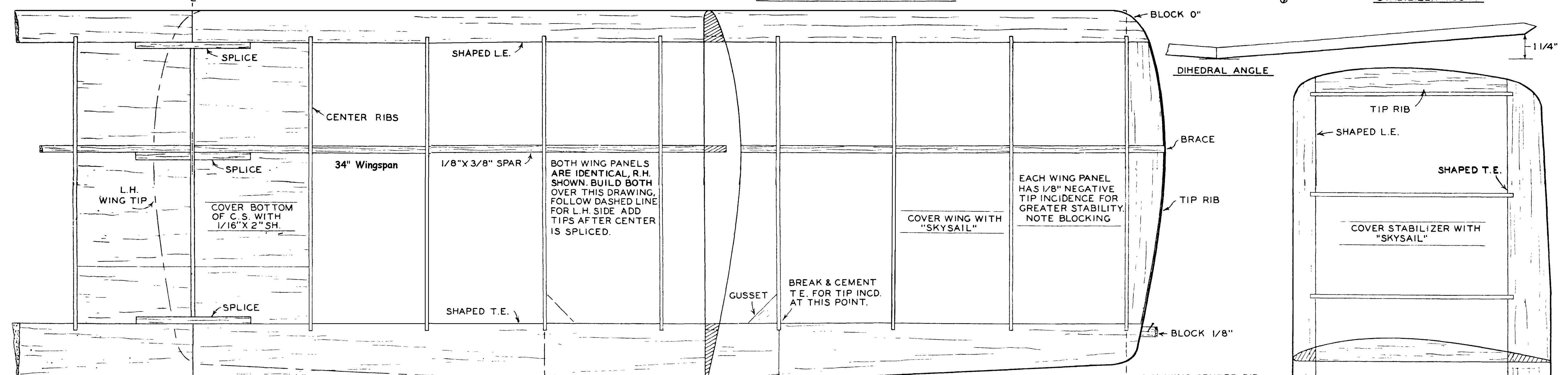


## "27" Model Citizen-Ship

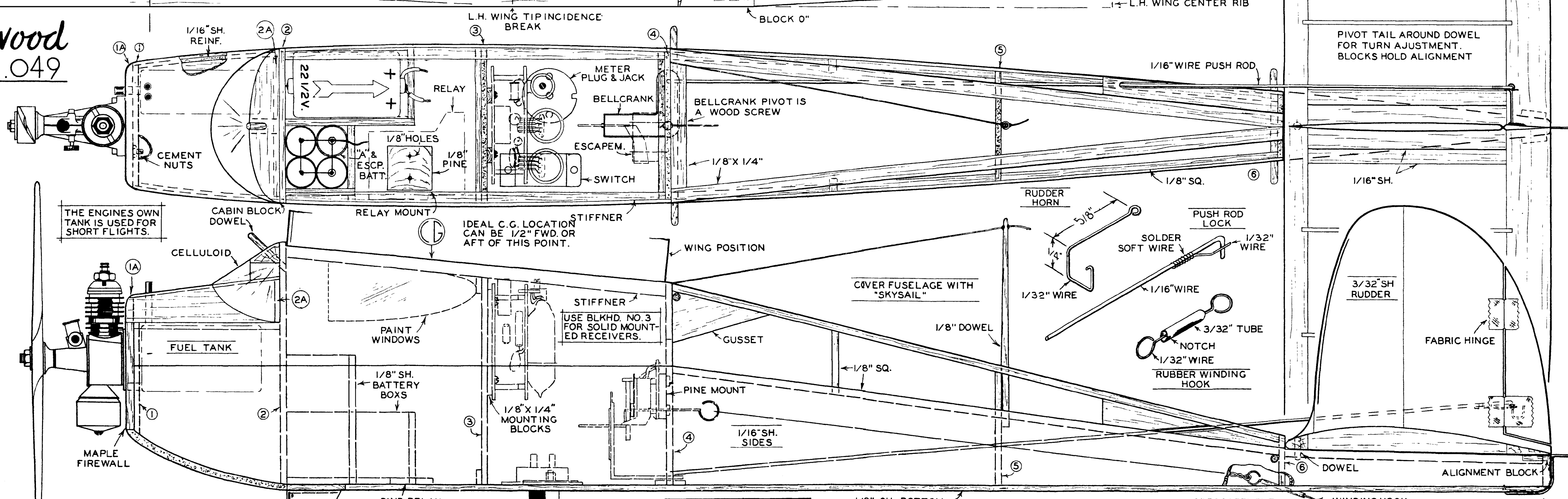
**INSTALLATION**  
ALSO ALL OTHER RECEIVERS THAT REQUIRE RUBBER BAND SUSPENSION.



## FUSELAGE ASSEMBLY



## Atwood .049



- SUITABLE ENGINES-**  
ATWOOD .049  
O.K. CUB .049  
WA SP .049  
K & B .049  
MC COY .049 DIESEL  
THERMAL HOPPER .049  
PROP. 6"-3" TORNAO

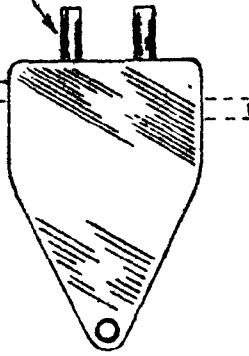
- SUITABLE RADIOS-**  
CITIZEN-SHIP "27"  
NORTH AMERICAN P/C  
SUPER AEROTROL  
TELESCO E.C.C.  
POLK'S E.D.  
AIR TRAILS "27"  
M.A.N. LORENZ 2 TUBE



ADD NEW VENTS

CUT OFF  
OLD VENTS

DARWIN B2  
TANK



DMECO'S

**LIVE  
KIT**

FOR A GREAT NEW T

WING SPAN.... 34"  
WING AREA.... 220 SQ. IN.  
WING LOAD.... 12 / SQ. FT.

WGH  
RADI  
MODE

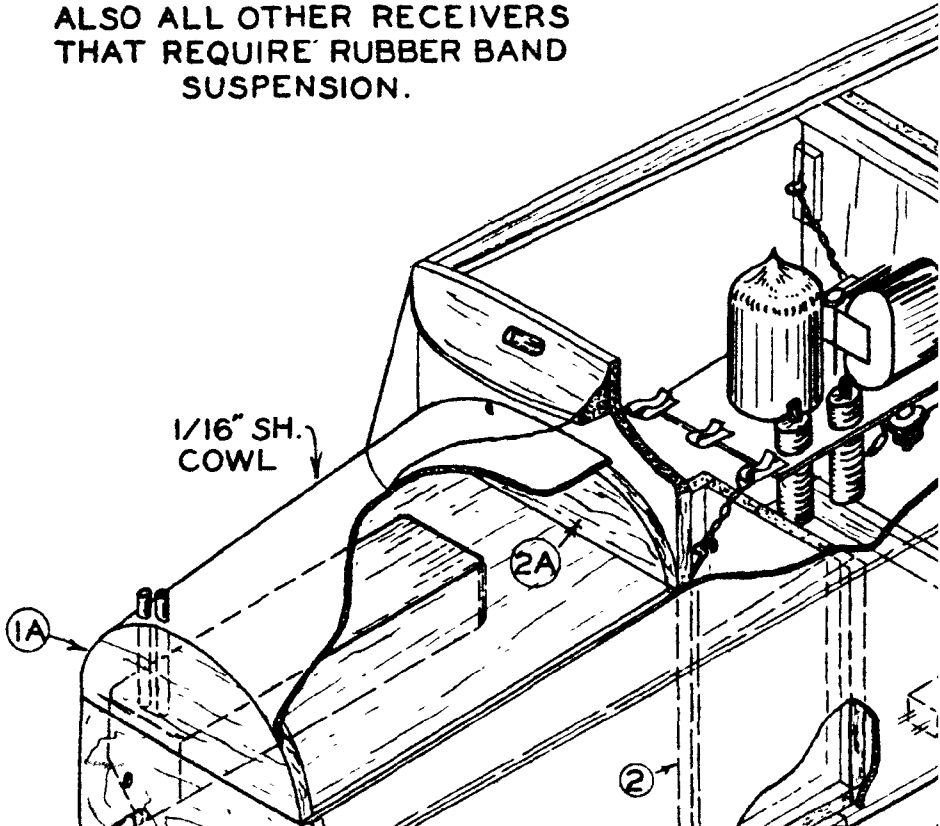
A PRODUCT OF TI  
WILLI

ALTERED FUEL TANK

# "27" Model *Citizen-Ship*

## INSTALLATION

ALSO ALL OTHER RECEIVERS  
THAT REQUIRE RUBBER BAND  
SUSPENSION.

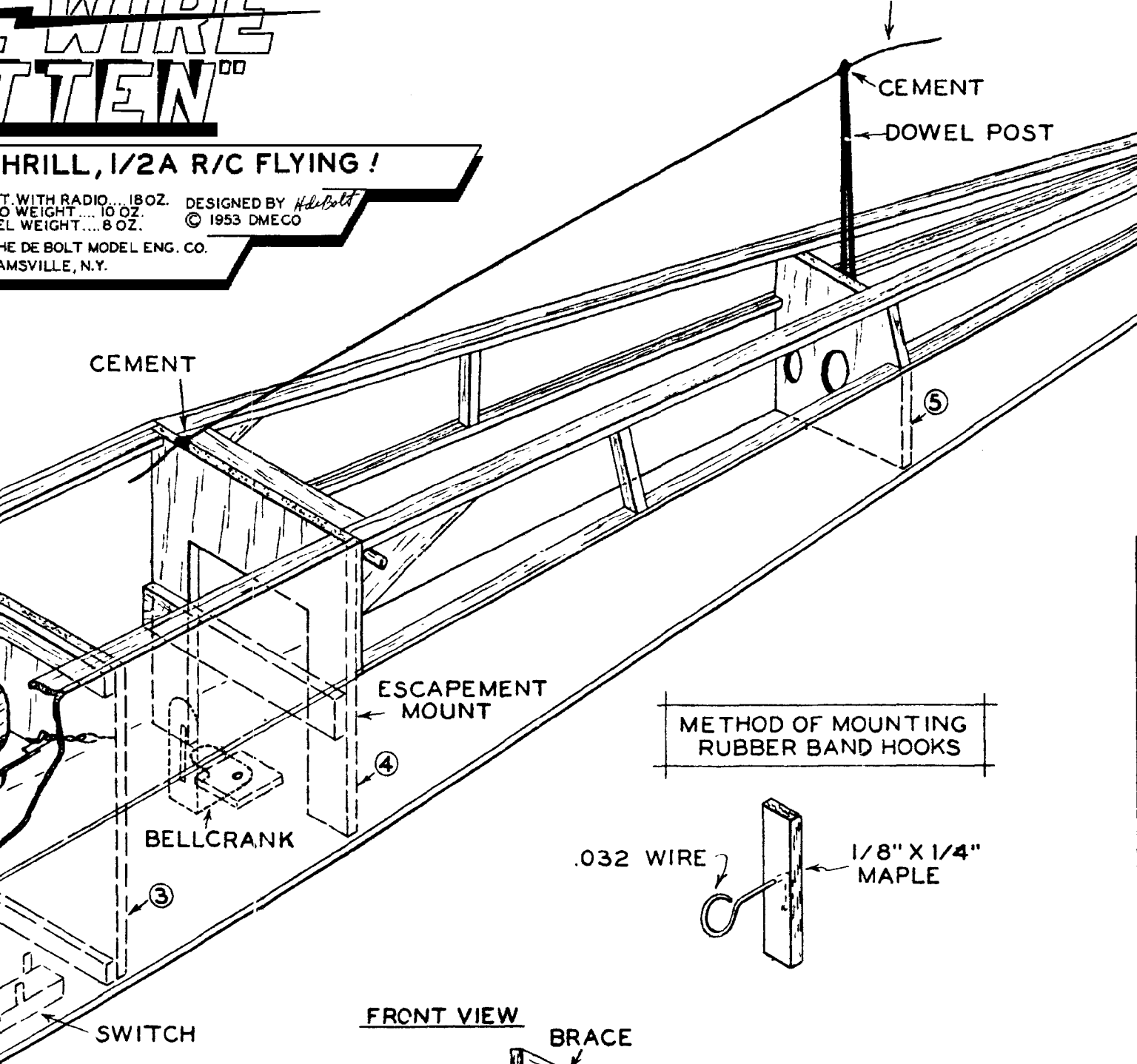


# "WIDE" "WIRE" "TEN"

THRILL, 1/2A R/C FLYING!

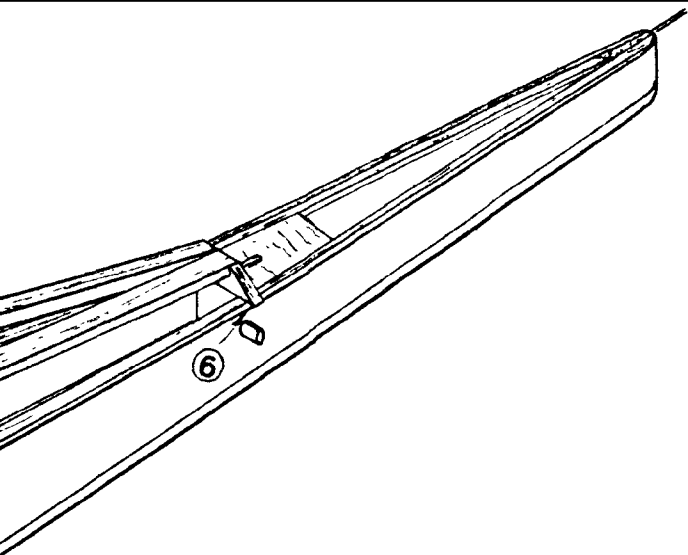
T. WITH RADIO.... 18 OZ. DESIGNED BY *Heide Bolt*  
 O WEIGHT.... 10 OZ. © 1953 DMECO  
 EL WEIGHT.... 8 OZ.  
 HE DE BOLT MODEL ENG. CO.  
 AMSVILLE, N.Y.

MAKE ANTENNA FROM WIRE TO LENGTH PRESCRIBED FOR YOUR PARTICULAR RECEIVER.

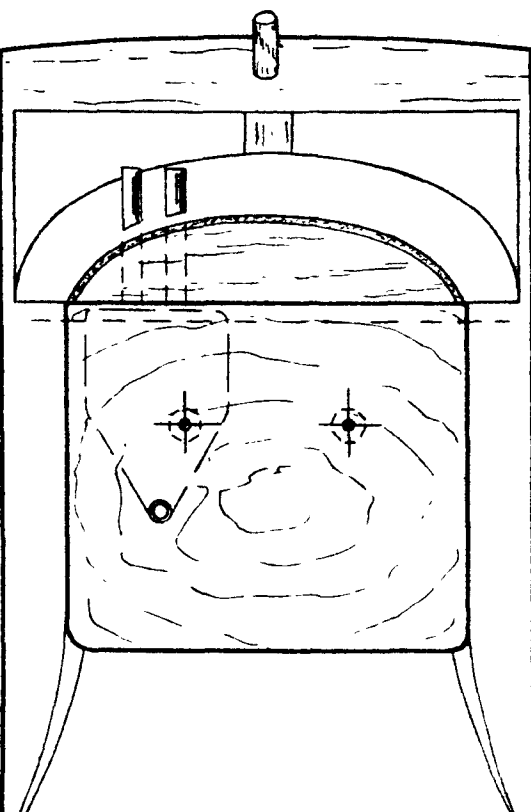


FRONT VIEW

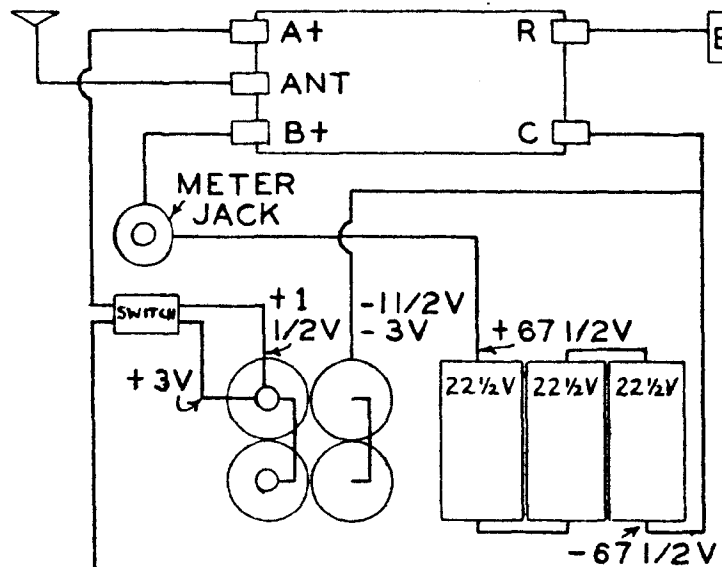
BRACE



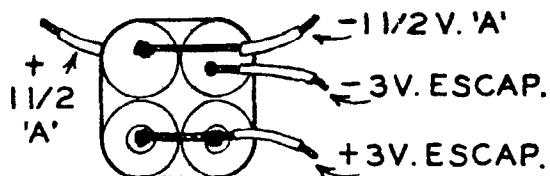
FRONT VIEW



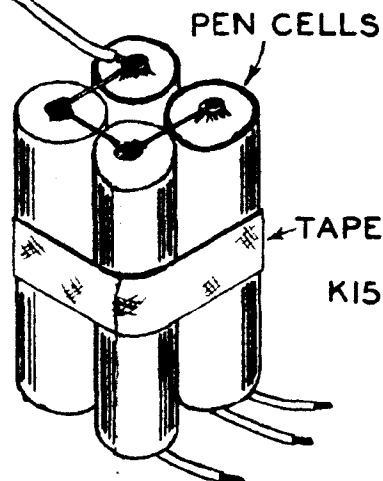
CITIZEN-SHIP '27'  
WIRING DIAGRAM



'A' SUPPLY & ESCAPEMENT  
BATTERIES FOR ALL  
RADIOS



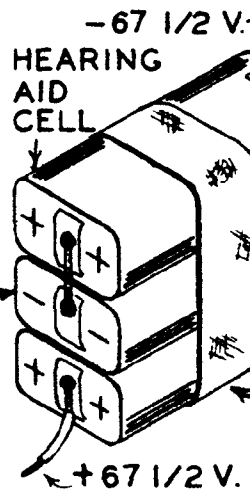
BOTTOM



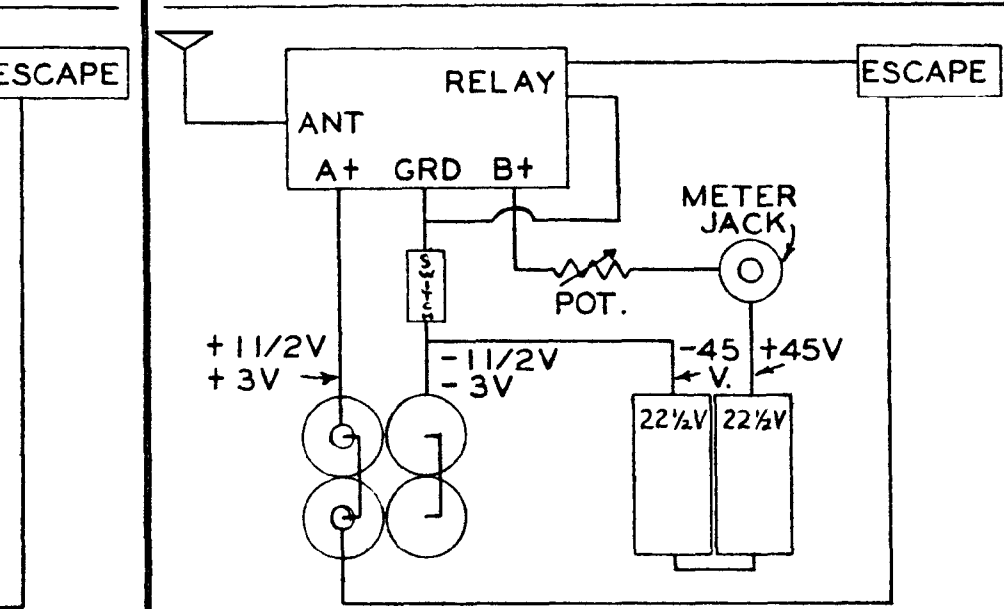
C-5  
67 1/2V



RE



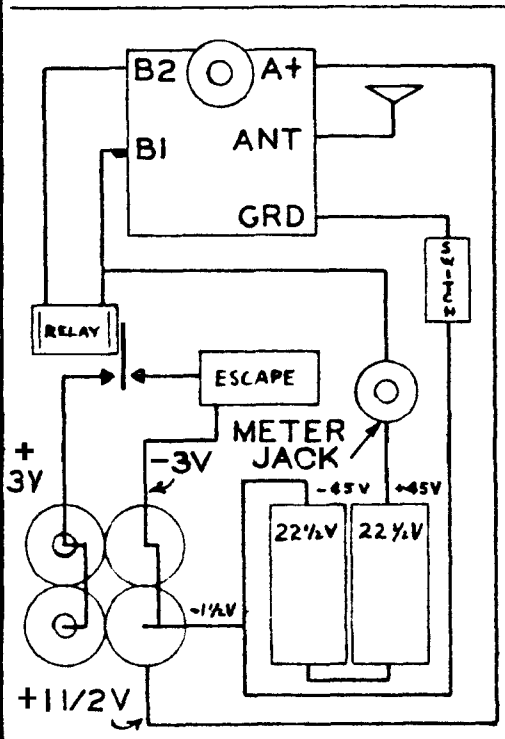
# RK61 & XFG-1 WIRING DIAGRAM



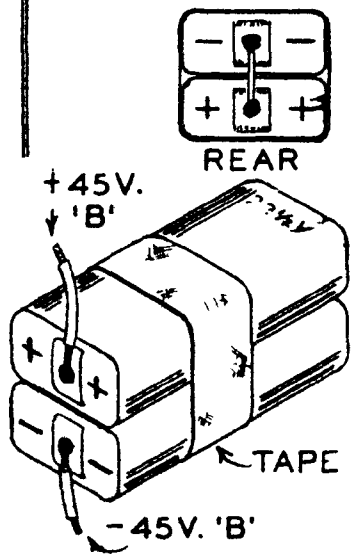
S '27'  
2V. 'B'



## NORTH AMERICAN P/C WIRING DIAGRAM



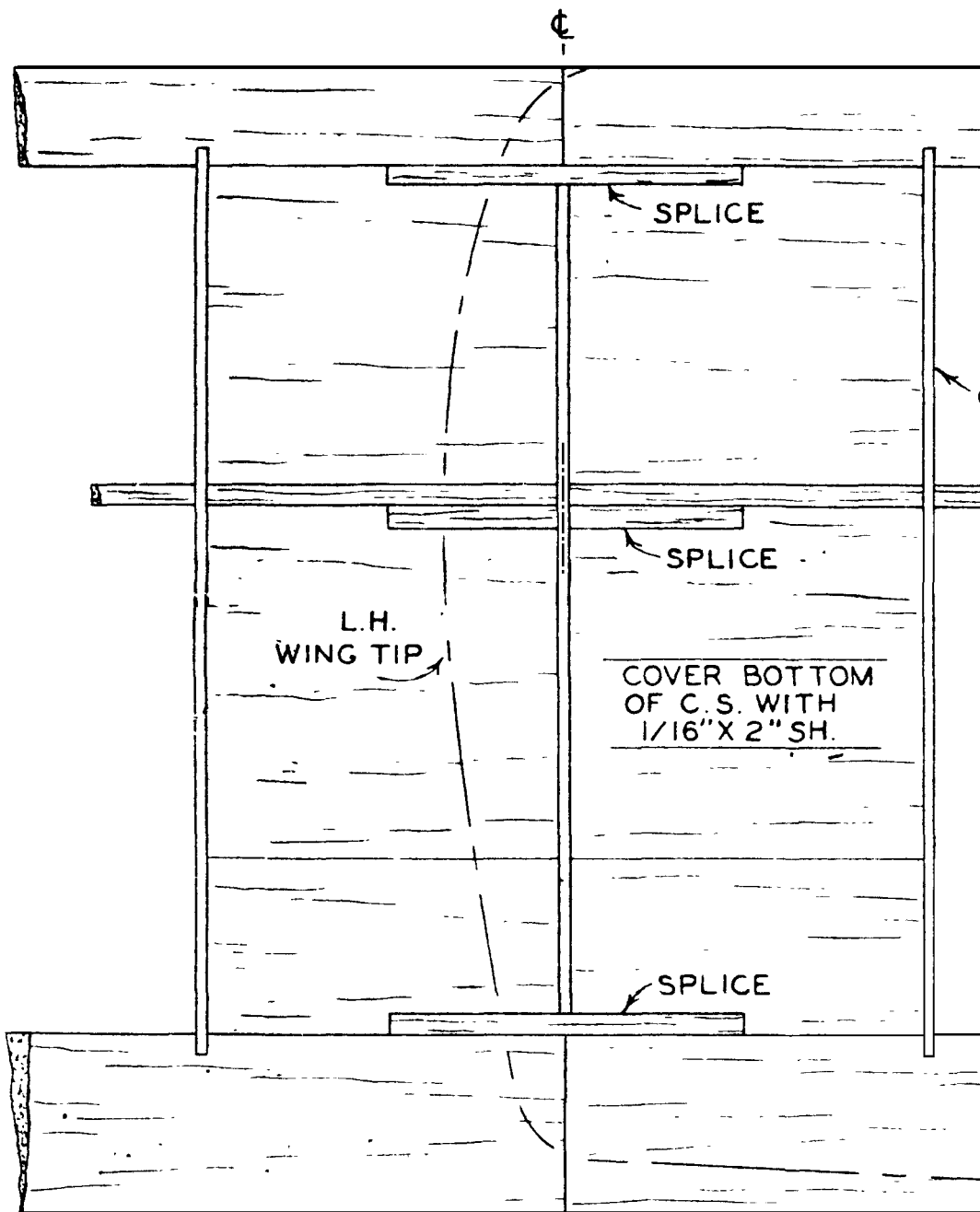
45V. 'B' SUPPLY  
FOR MOST  
RADIOS



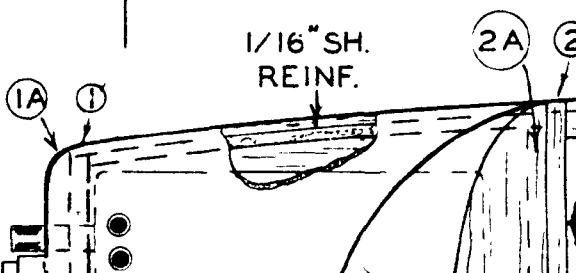
MAPLE  
FIREWALL

NOTE NOSE REINF.

# FUSELAGE ASSEMBLY



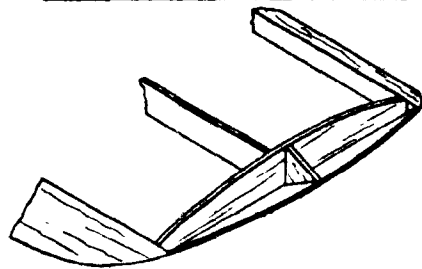
*Atwood*  
.049



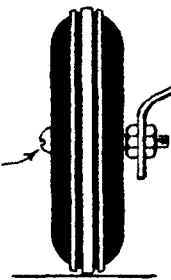
MAPLE GEAR MOUNT



WING TIP DETAILS



AXLE BOLTS



LAYO

CENTER RIBS

34" Wingspan

SHAPED L.E. ↗

1/8" X 3/8" SPAR ↗

SHAPED T.E. ↘

BOTH WING PANELS ARE IDENTICAL, R.H. SHOWN. BUILD BOTH OVER THIS DRAWING, FOLLOW DASHED LINE FOR L.H. SIDE ADD TIPS AFTER CENTER IS SPLICED.

GUSSET ↘

L.H. WING TIP INCIDENCE BREAK

③

④

22 1/2

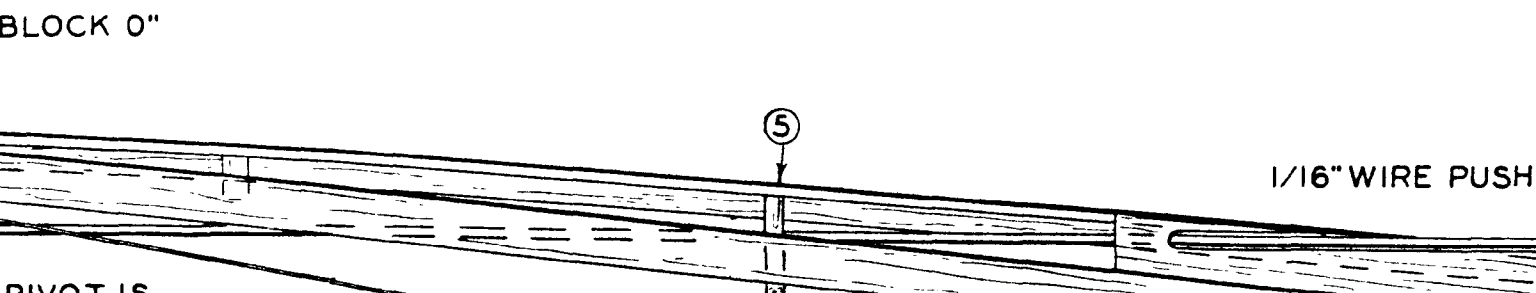
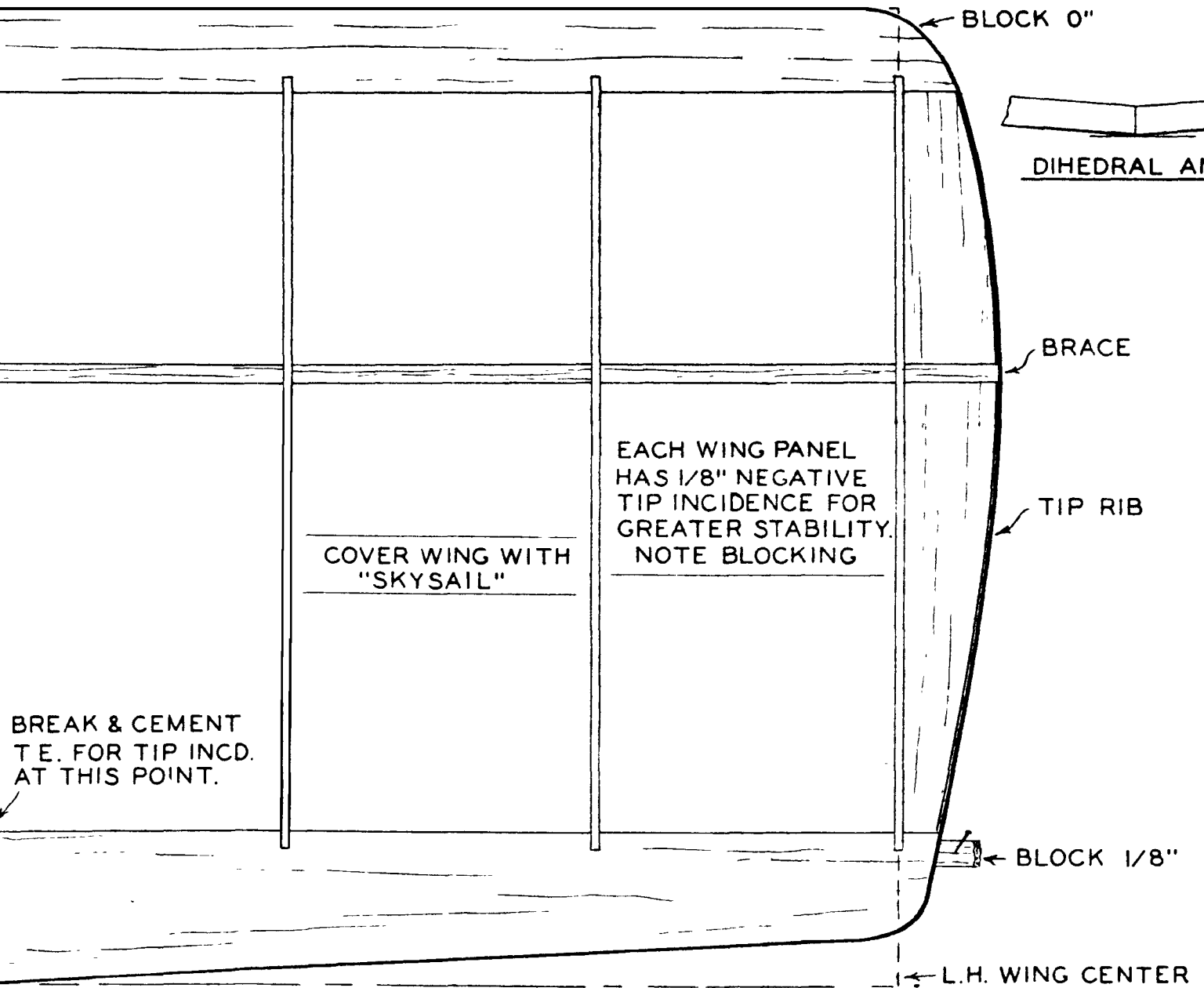
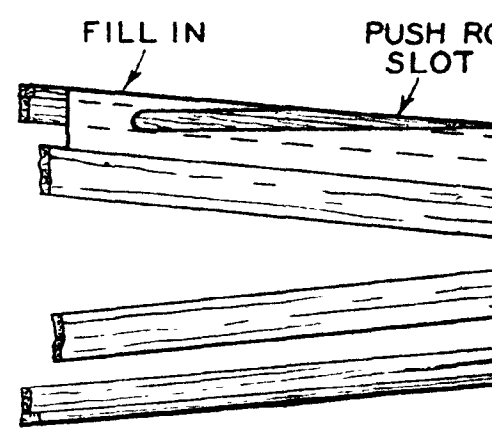
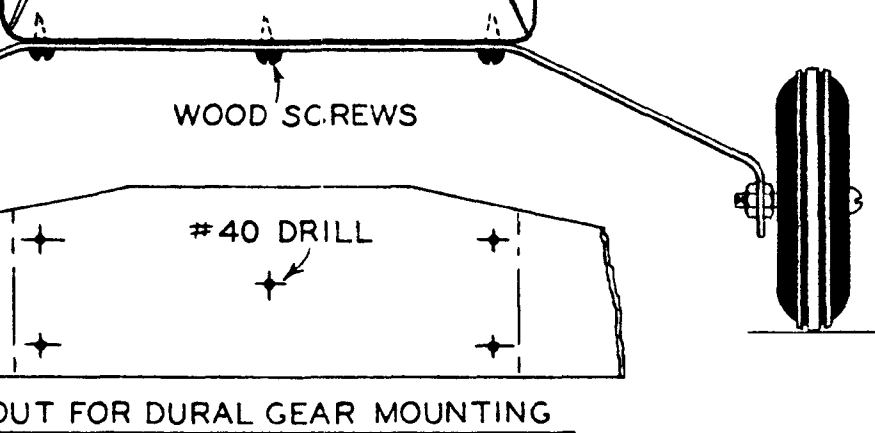
RELAY

METER PLUG & JACK

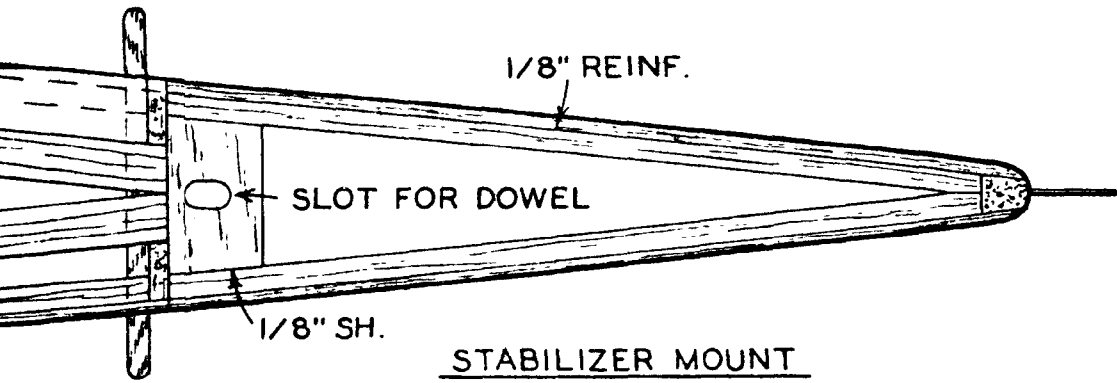
BELL CRANK

BELL CRANK

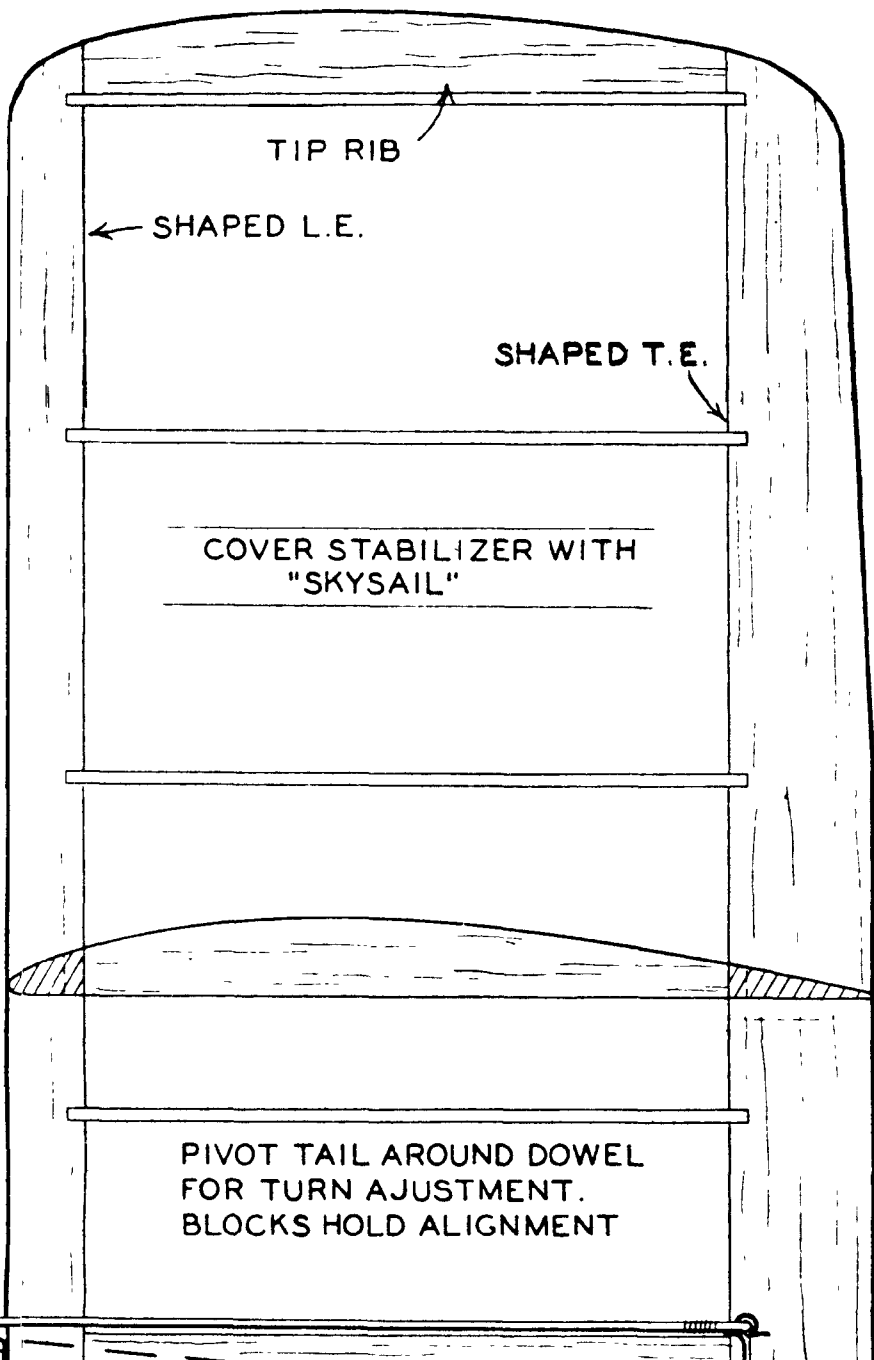




OD

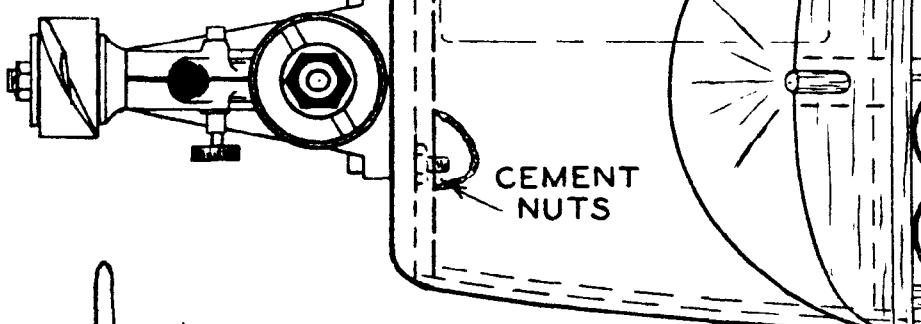


ANGLE



RIB

ROD

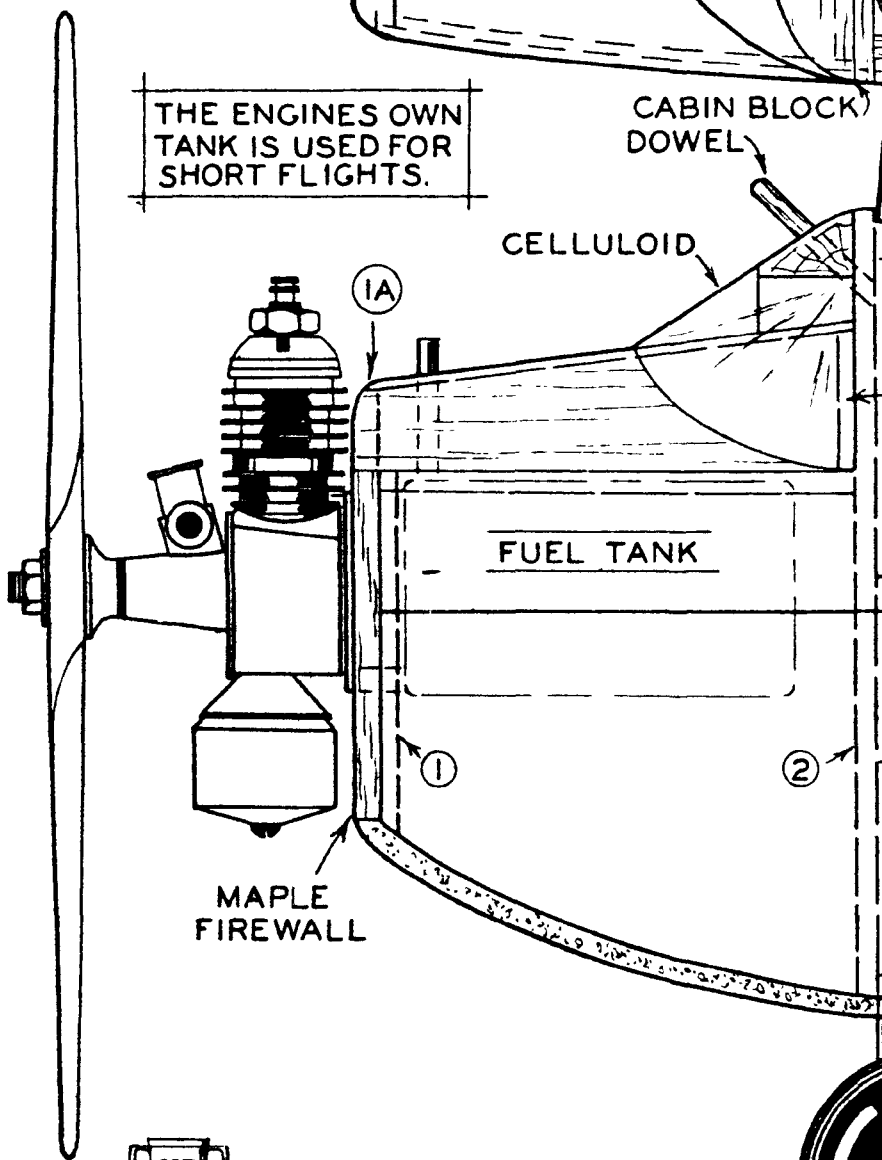


CEMENT NUTS

THE ENGINES OWN TANK IS USED FOR SHORT FLIGHTS.

CABIN BLOCK DOWEL

CELLULOID



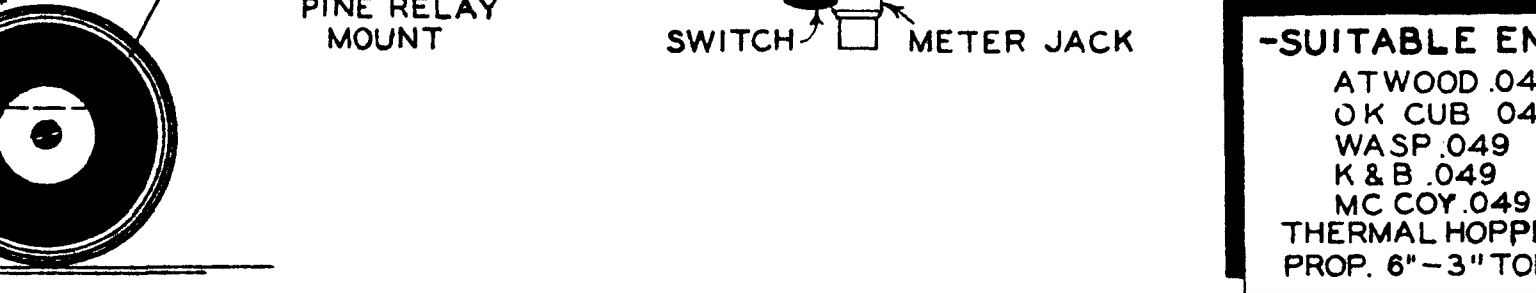
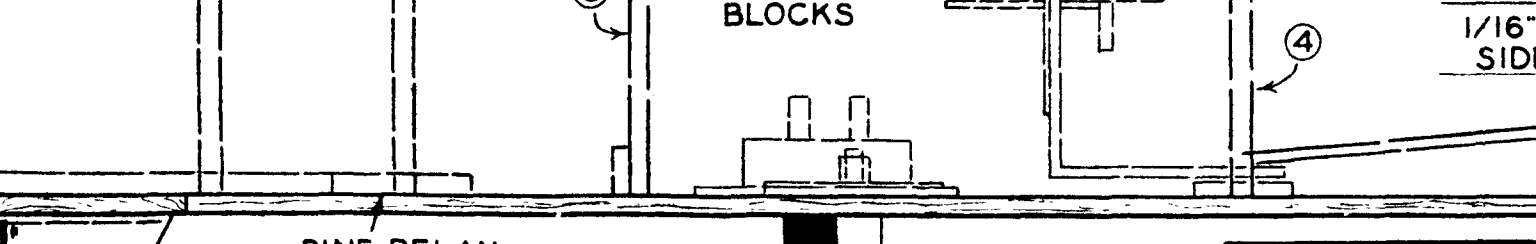
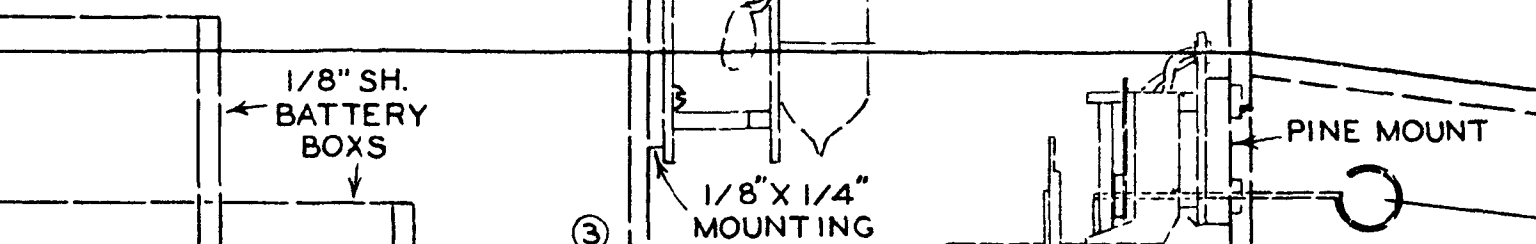
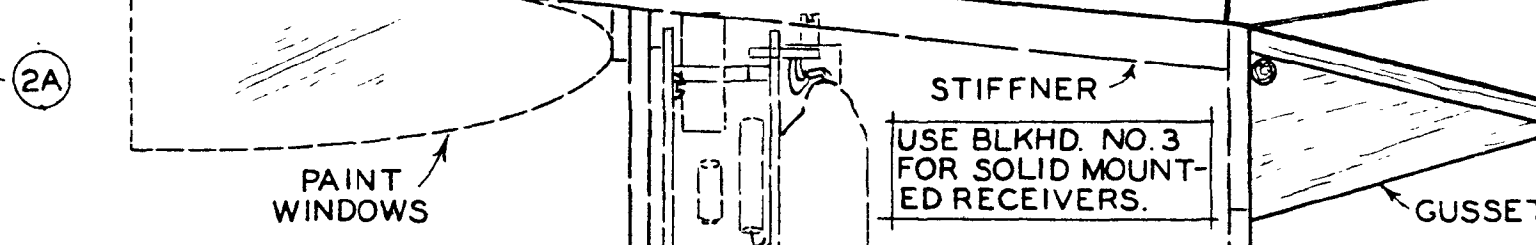
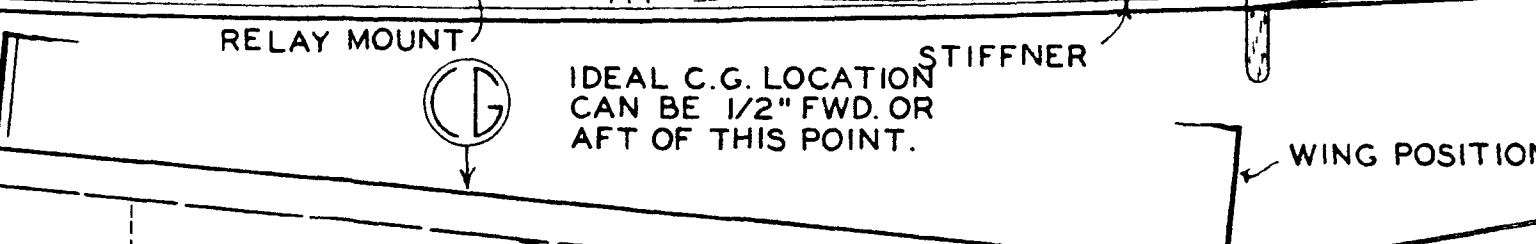
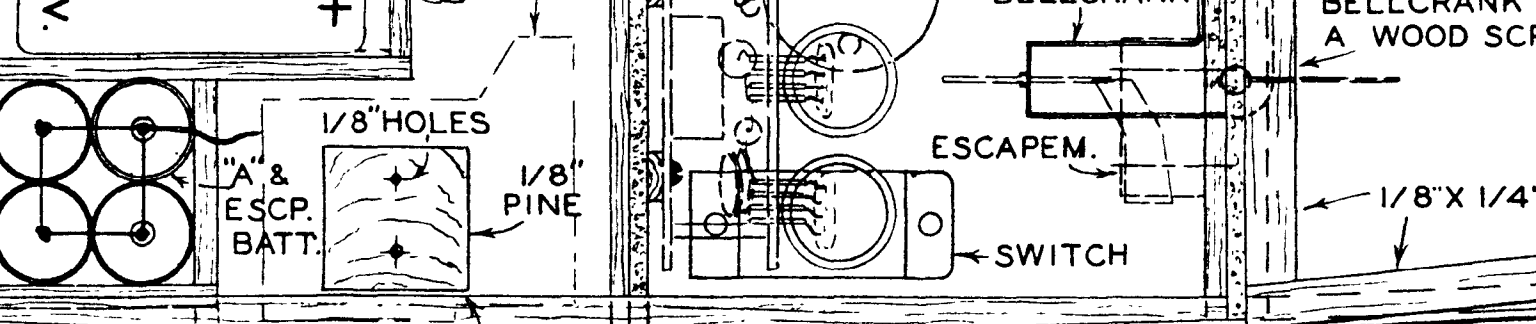
FUEL TANK

MAPLE FIREWALL

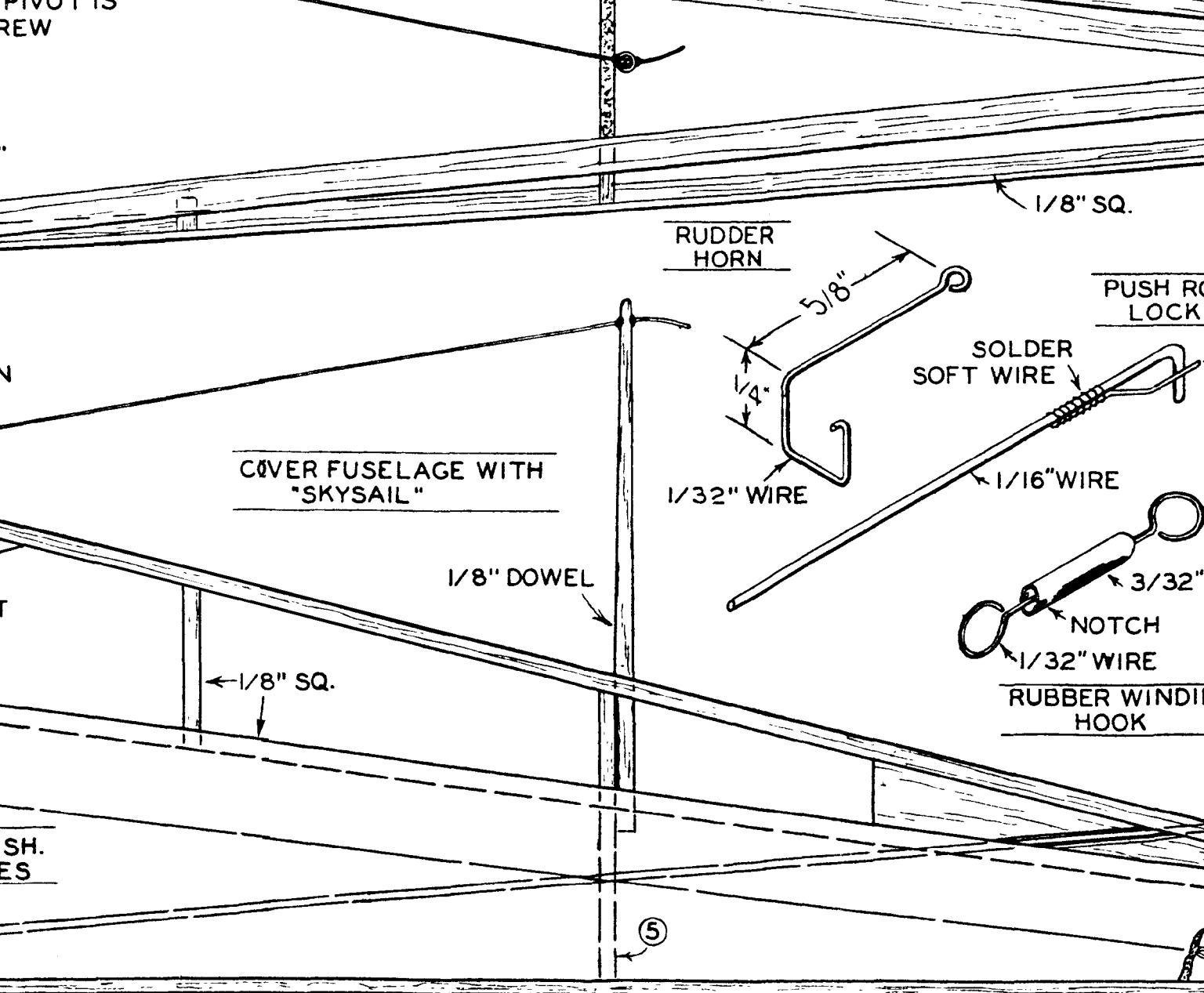
**TORPEDO**



.049



- SUITABLE EN**
- ATWOOD .04
  - OK CUB .04
  - WASP .049
  - K & B .049
  - MC COY .049
  - THERMAL HOPPE
  - PROP. 6" - 3" TO

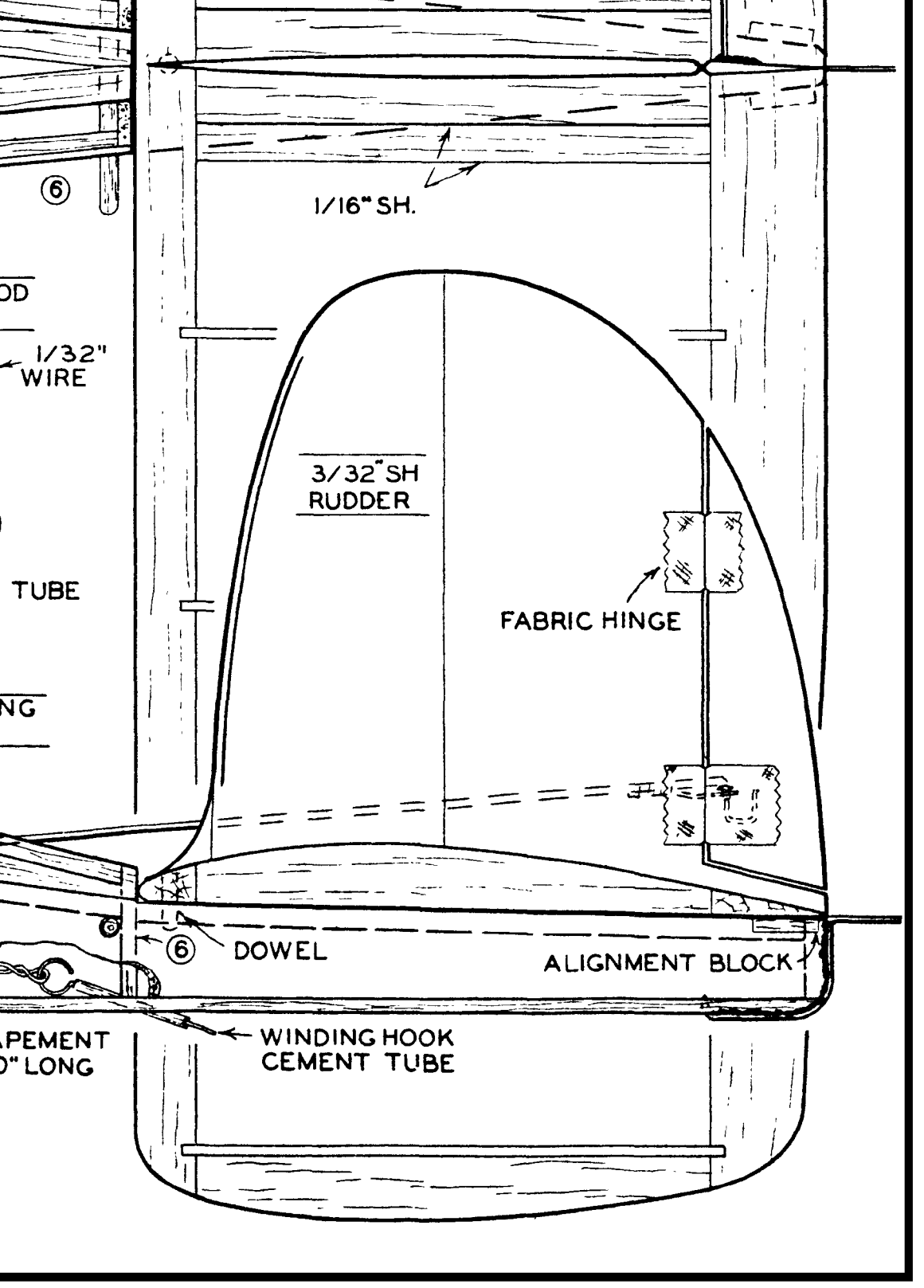


ENGINES -  
 9  
 9  
 DIESEL  
 ER .049  
 RNADO

1/8" SH. BOTTOM

-SUITABLE RADIOS-  
 CITIZEN-SHIP "27"  
 NORTH AMERICAN P/C  
 SUPER AEROTROL  
 TELASCO E.C.C.  
 POLK'S E.D.  
 AIR TRAILS "27"  
 M.A.N. LORENZ 2 TUBE

1/8" ESCA  
RUBBER IC



⑥

1/16" SH.

OOD

1/32" WIRE

3/32" SH  
RUDDER

TUBE

FABRIC HINGE

NG

⑥

DOWEL

ALIGNMENT BLOCK

CEMENT  
" LONG

WINDING HOOK  
CEMENT TUBE