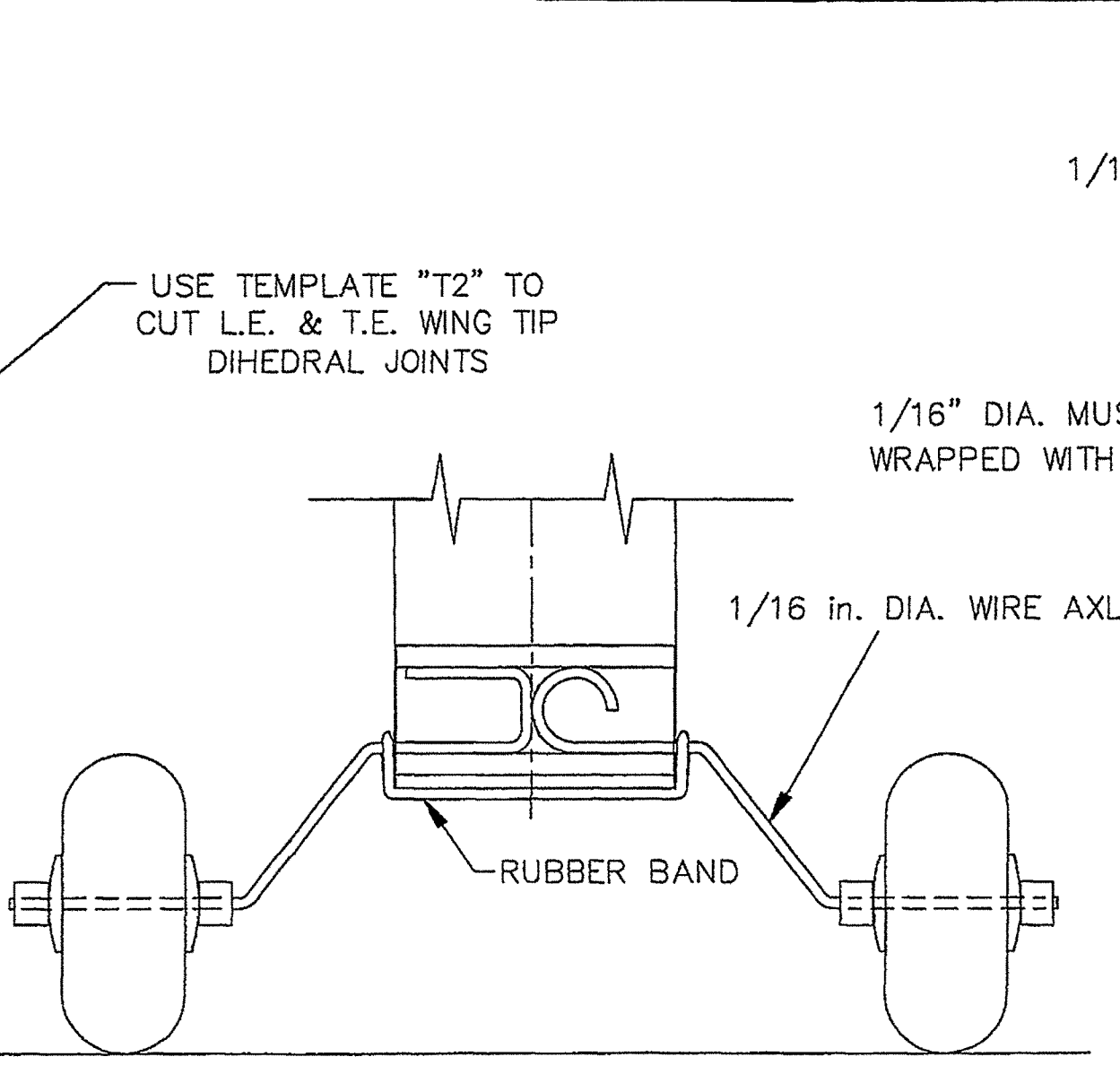
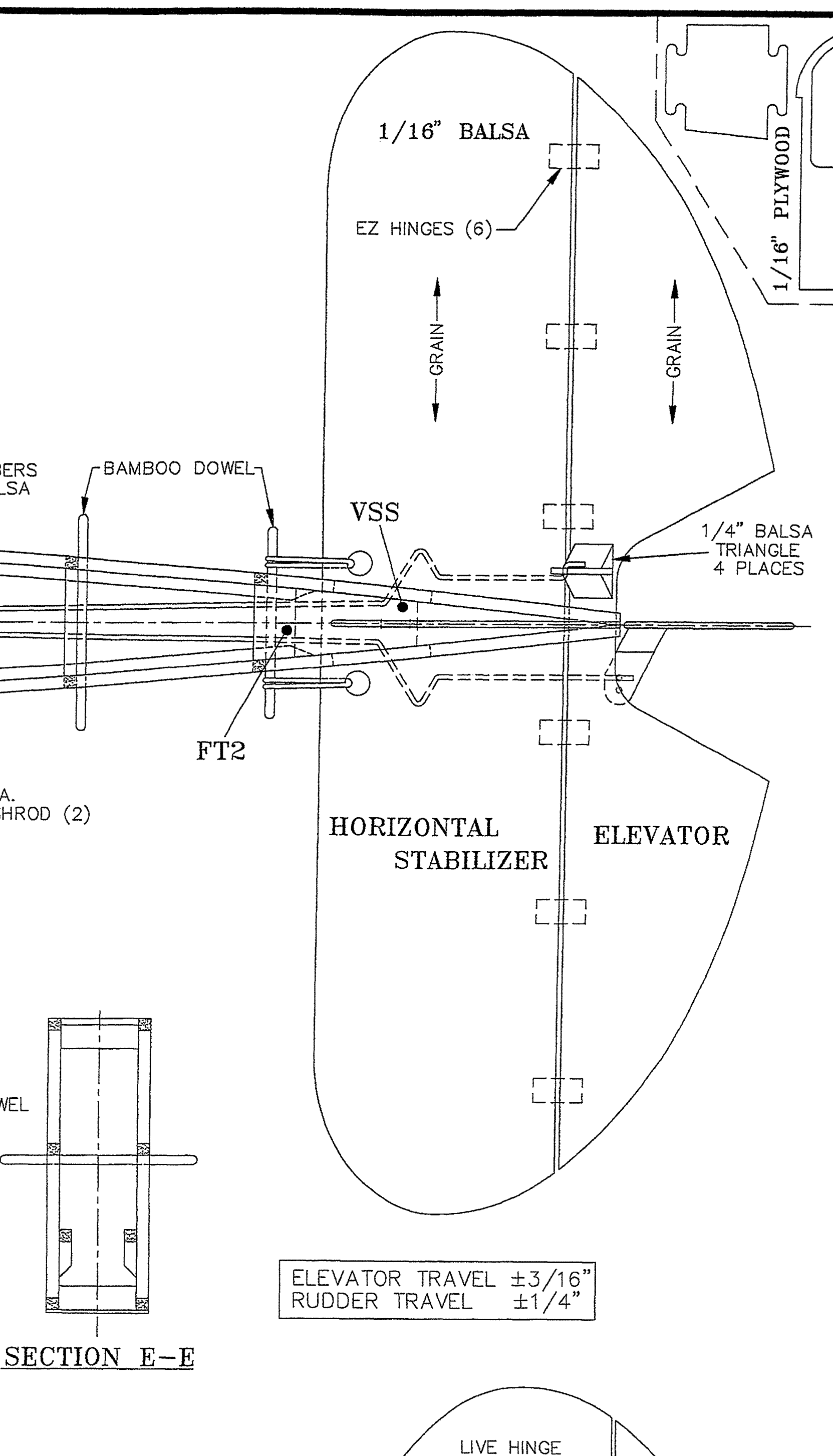
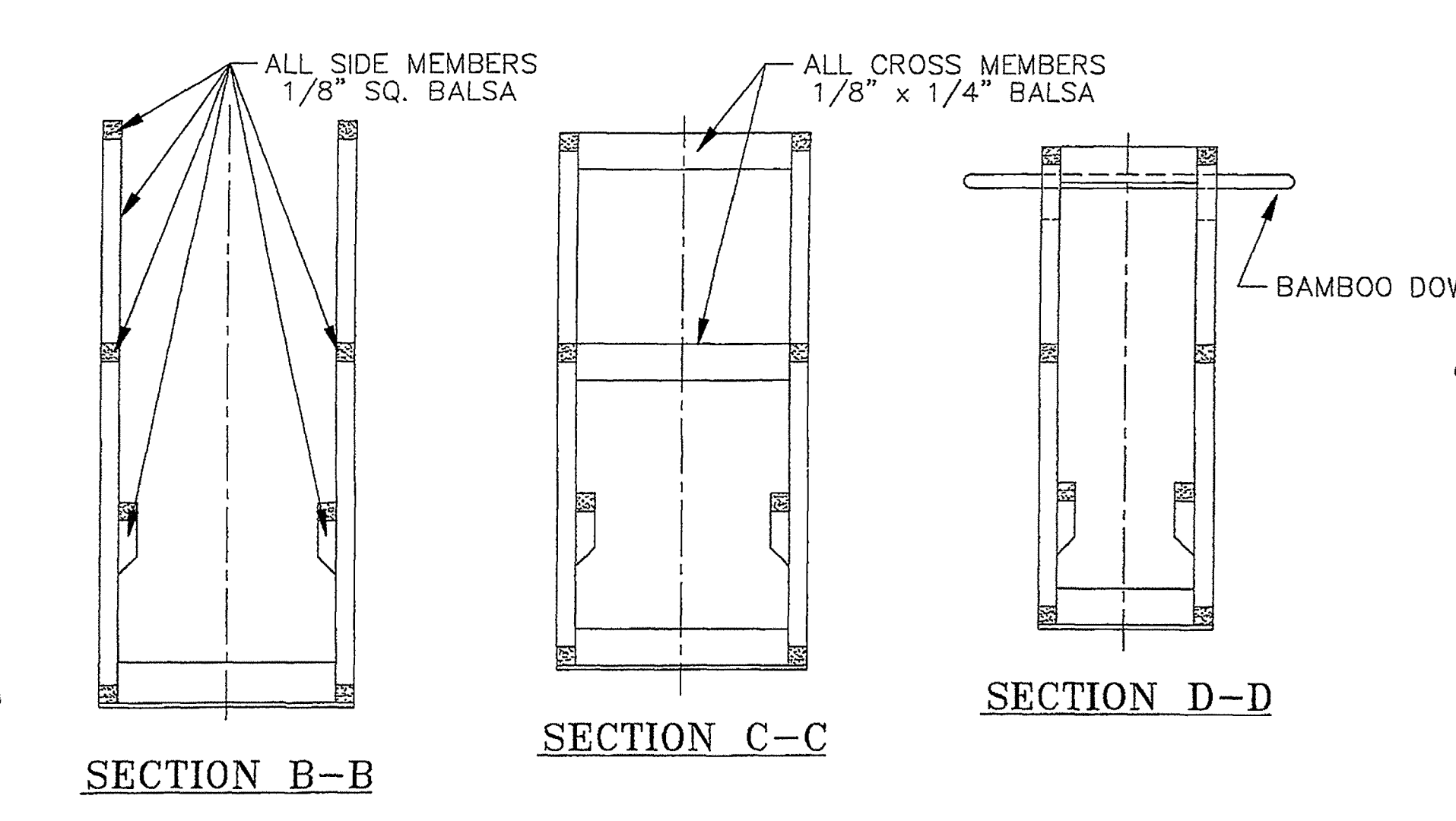
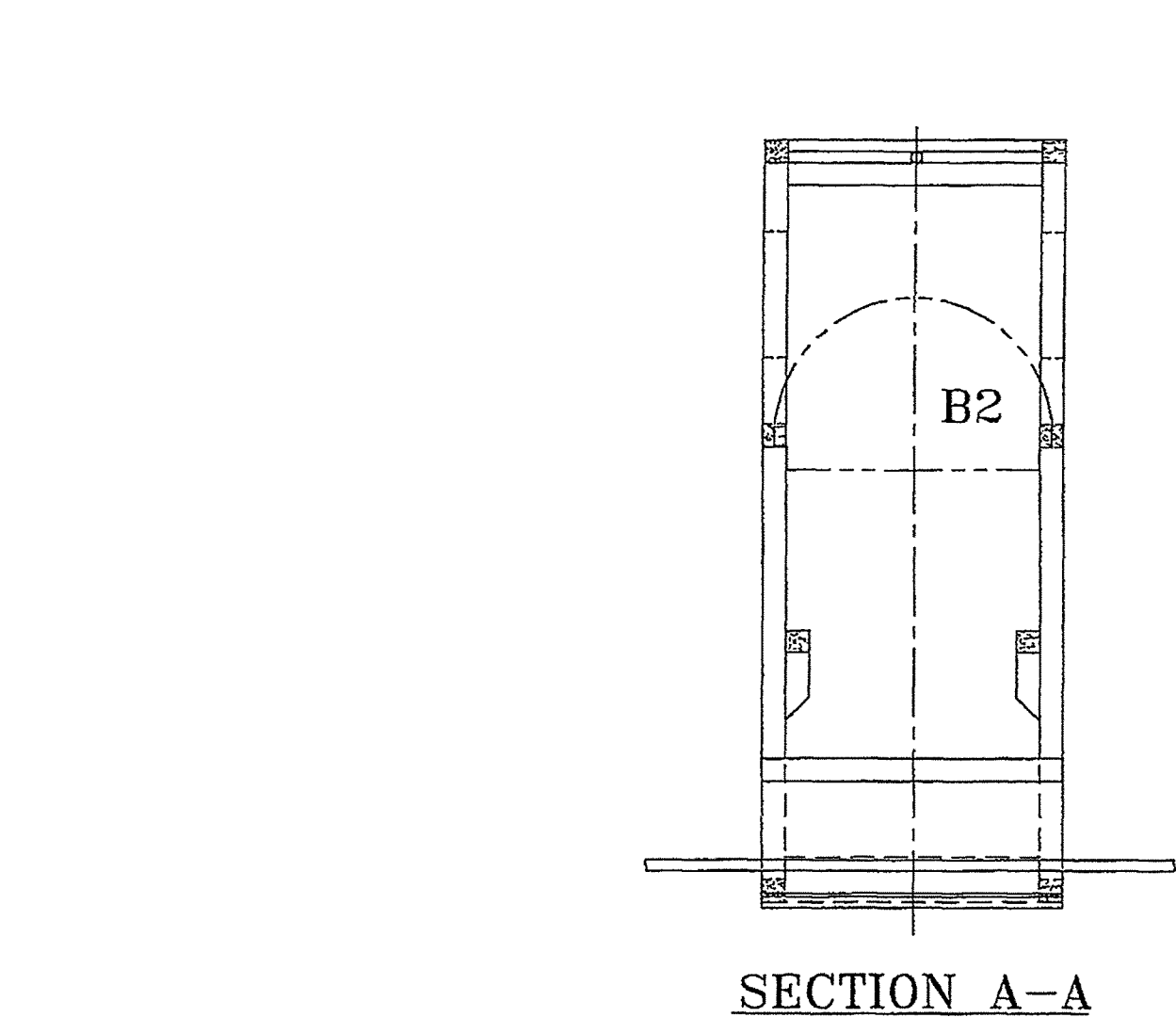
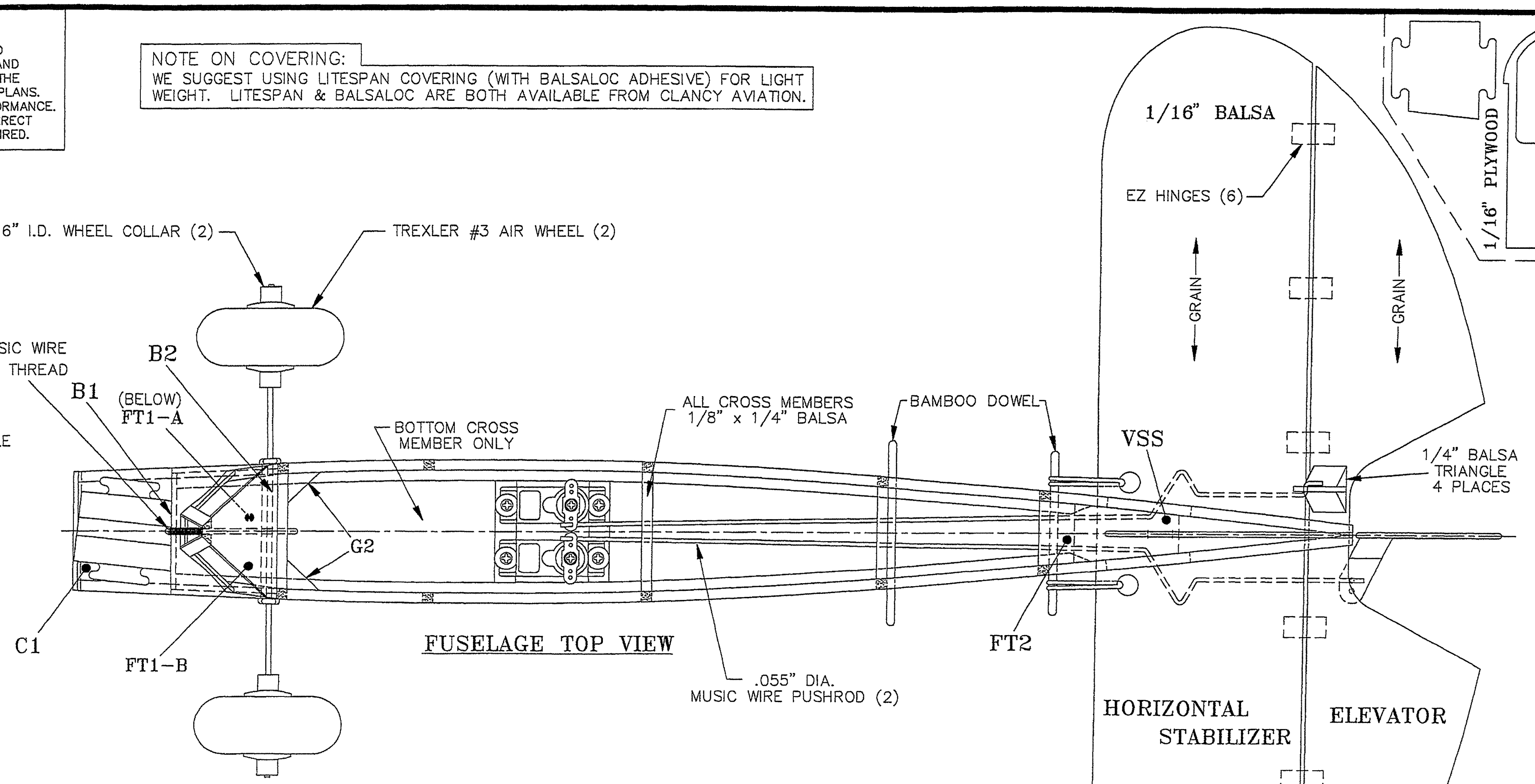


NOTE TO KIT BUILDERS:
 DUE TO CHANGES IN TEMPERATURE AND HUMIDITY, THE PAPER PLANS MAY EXPAND OR CONTRACT SLIGHTLY. THEREFORE, THE PARTS MAY NOT EXACTLY MATCH THE PLANS. THIS WILL NOT AFFECT AIRCRAFT PERFORMANCE. ASSUME THE PRE-CUT PARTS ARE CORRECT AND ADJUST YOUR ASSEMBLY AS REQUIRED.

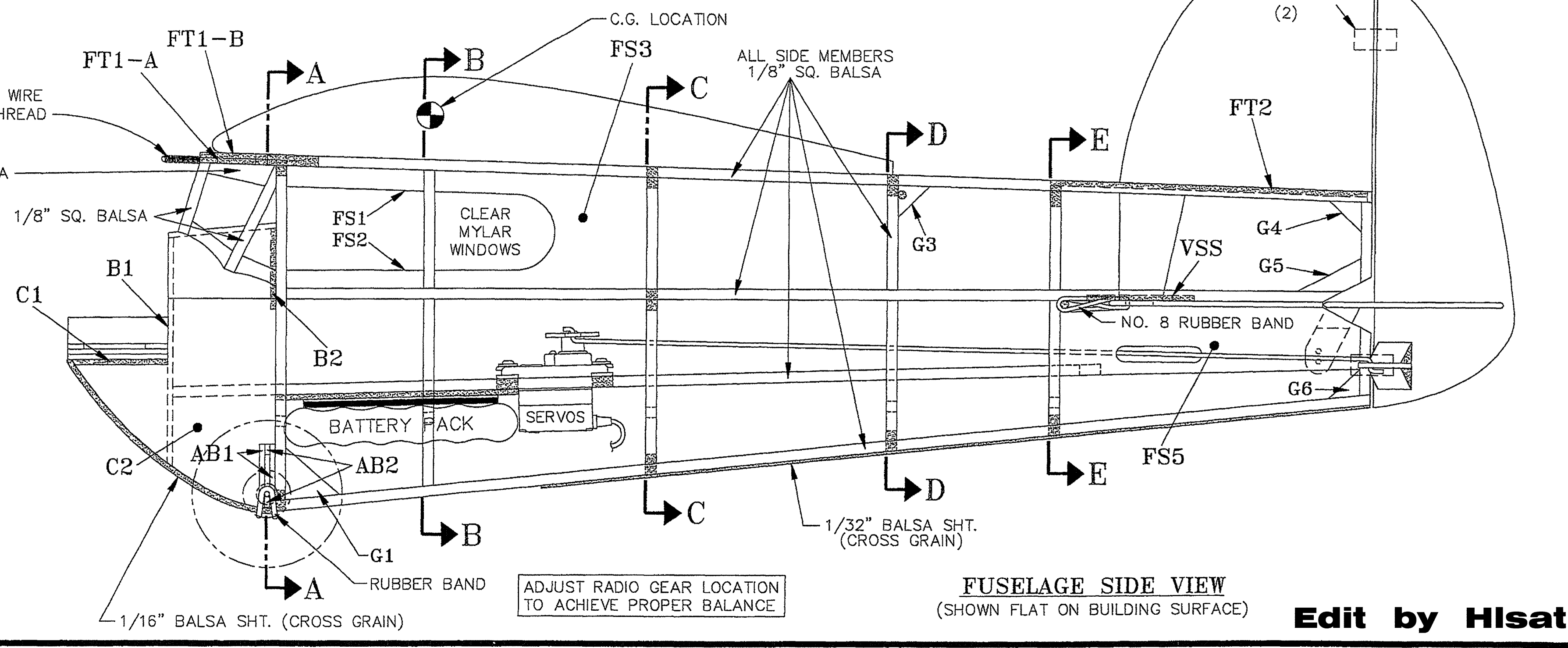
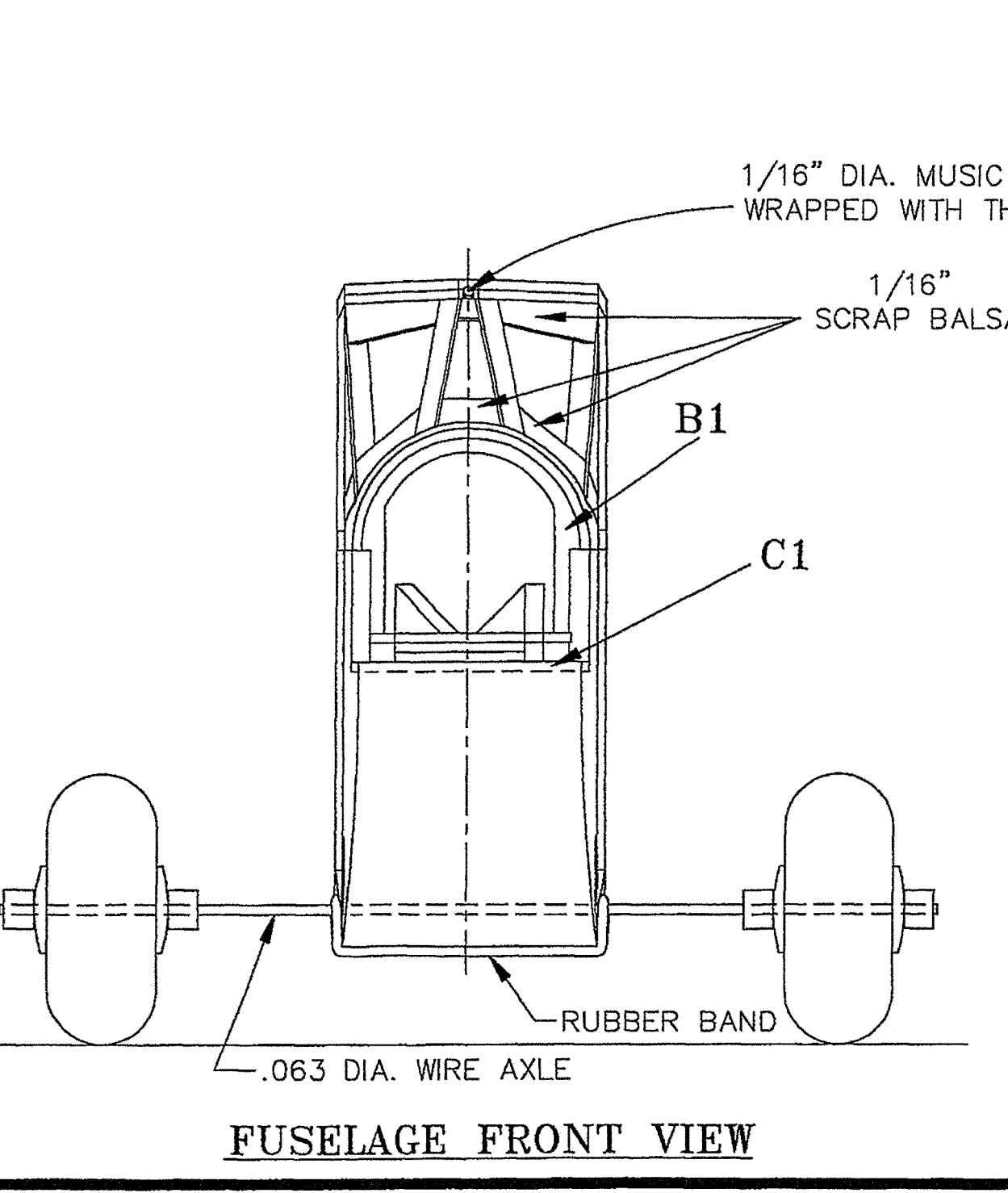
NOTE ON COVERING:
 WE SUGGEST USING LITESPAN COVERING (WITH BALSALOC ADHESIVE) FOR LIGHT WEIGHT. LITESPAN & BALSALOC ARE BOTH AVAILABLE FROM CLANCY AVIATION.



FUSELAGE FRONT VIEW
 OPTIONAL L.G. FOR LARGE DIAMETER PROPELLER CLEARANCE
 THE LEFT L.G. WILL GIVE A STIFFER SUSPENSION AND THE RIGHT L.G. WILL GIVE A SOFTER SUSPENSION



ELEVATOR TRAVEL $\pm 3/16"$
 RUDDER TRAVEL $\pm 1/4"$



ADJUST RADIO GEAR LOCATION TO ACHIEVE PROPER BALANCE

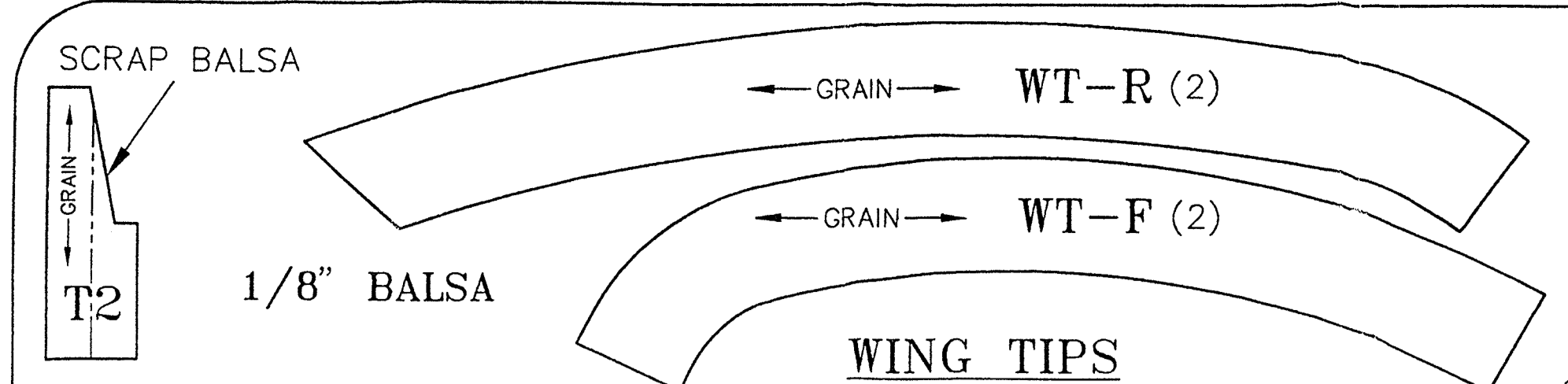
CLANCY AVIATION
 P.O. BOX 4125, MESA, AZ. 85211-4125
 TEL: (480)649-1534 FAX: (480)649-9040

Lady Bug™
 .020 TO .051 POWERED SMALL FIELD R/C AIRPLANE
 ORIGINAL DESIGN BY: ANDY CLANCY
 REV. D DRAWING BY: RANDY HEYDON

COPYRIGHT © 2001
 ALL RIGHTS RESERVED

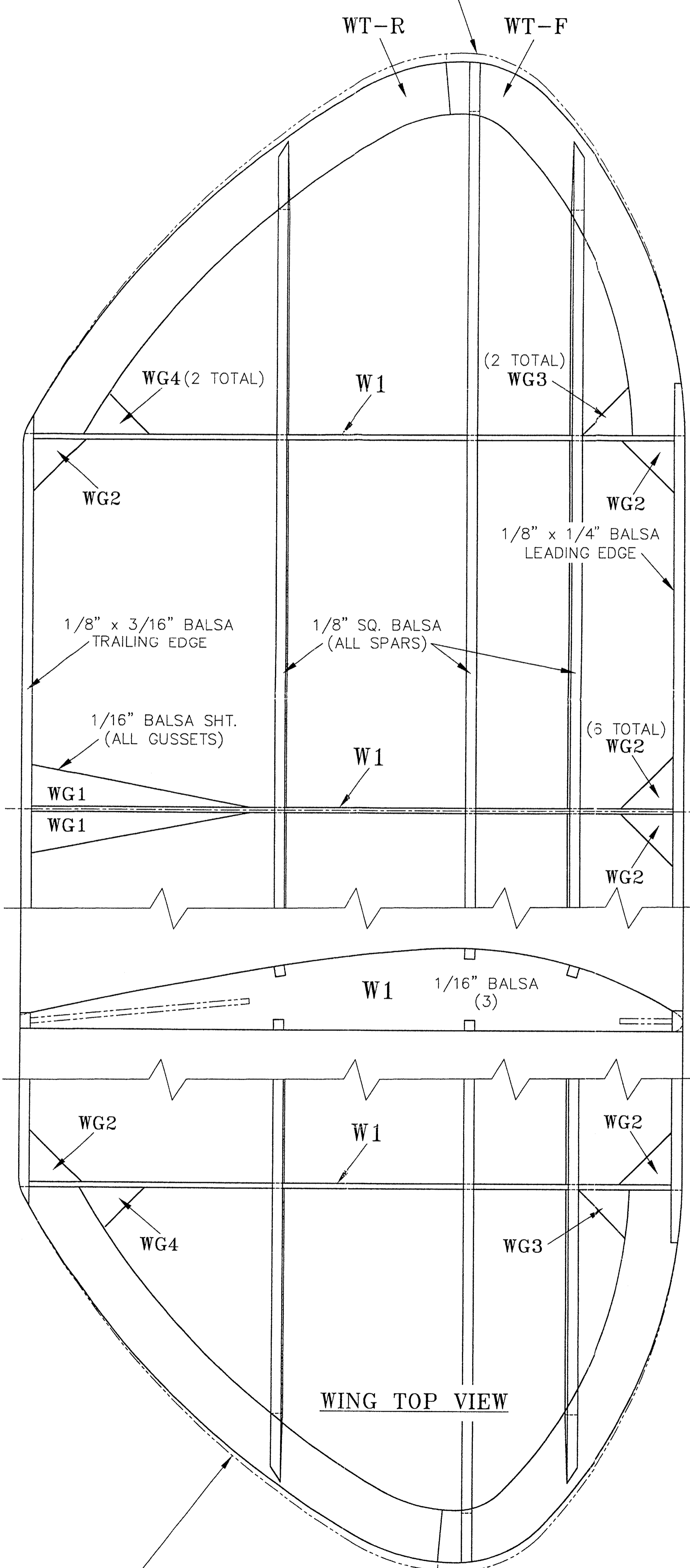
SCALE: 1:1 REV: E 6/02 SHT: 1 OF 1

Edit by Hlsat.

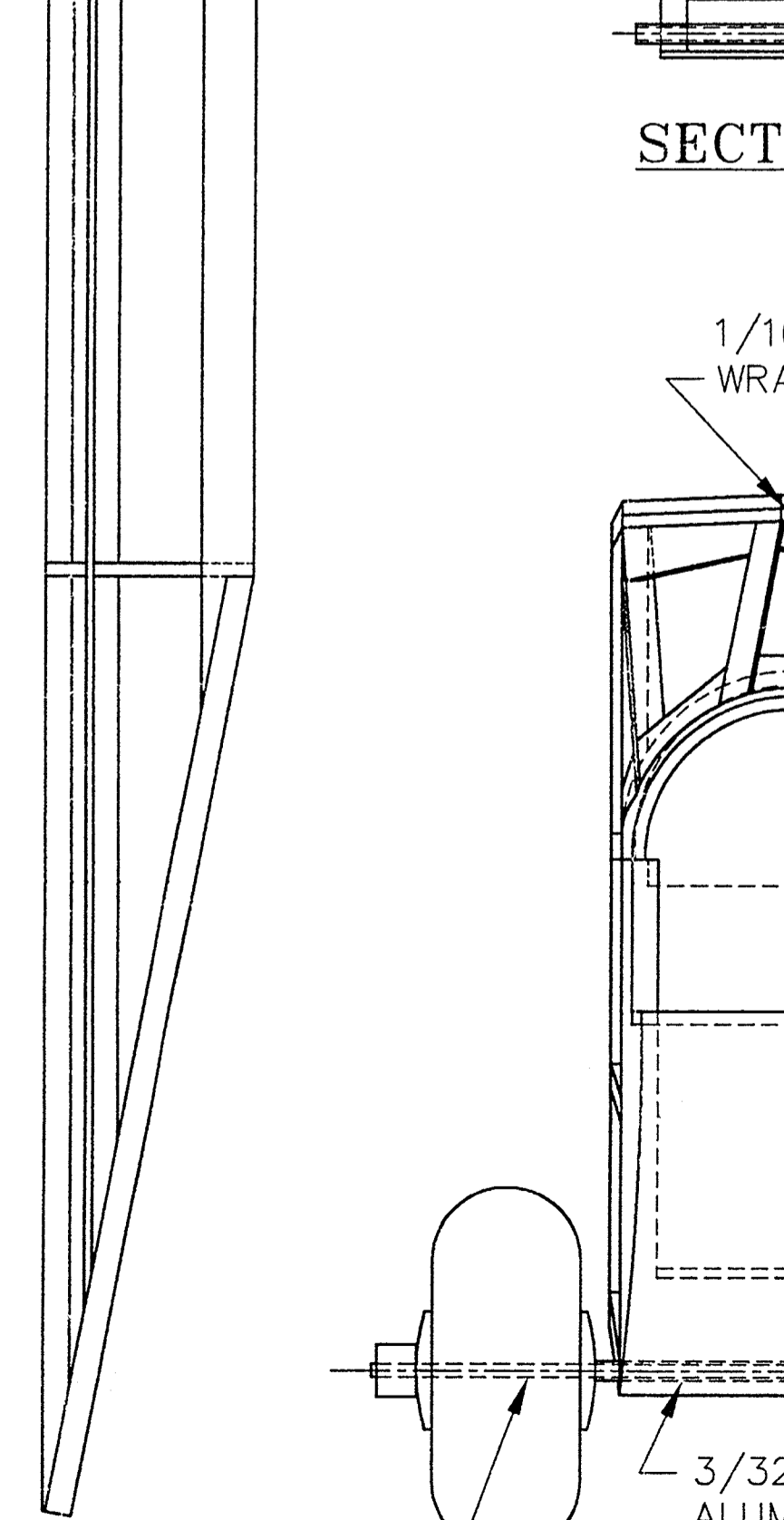
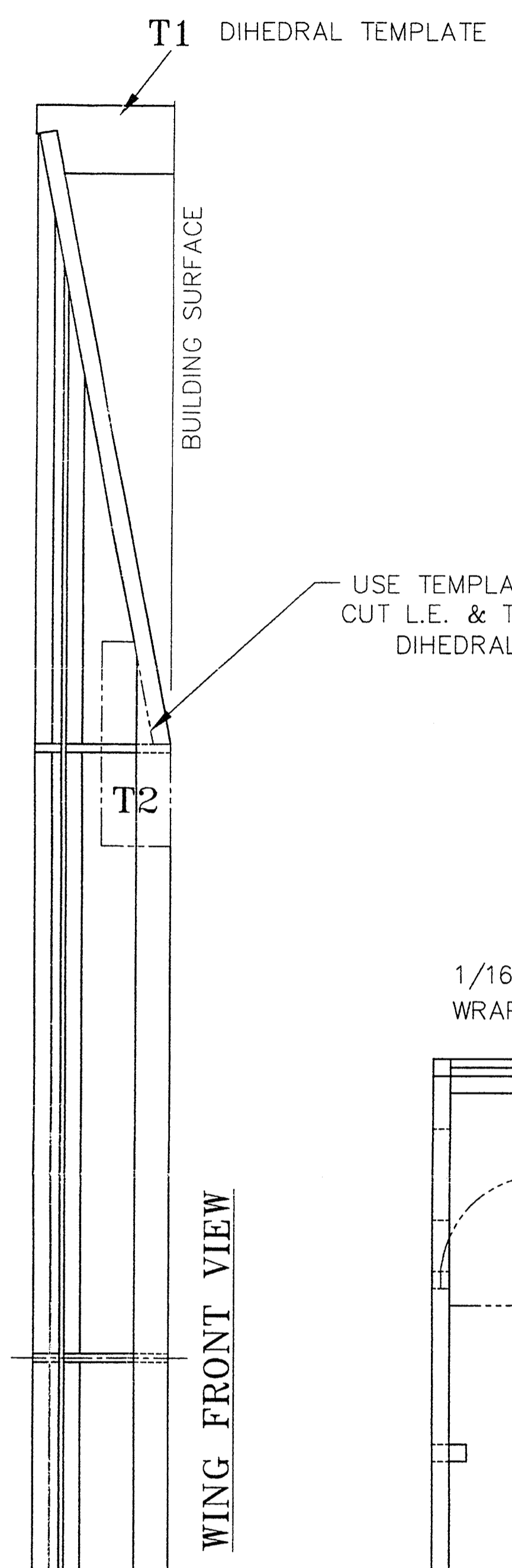


NOTE TO KIT BUILDERS:
DUE TO CHANGES IN TEMPERATURE AND HUMIDITY, THE PAPER PLANS MAY EXPAND OR CONTRACT SLIGHTLY. THEREFORE, THE PARTS MAY NOT EXACTLY MATCH THE PLANS. THIS WILL NOT AFFECT AIRCRAFT PERFORMANCE. ASSUME THE PRE-CUT PARTS ARE CORRECT AND ADJUST YOUR ASSEMBLY AS REQUIRED.

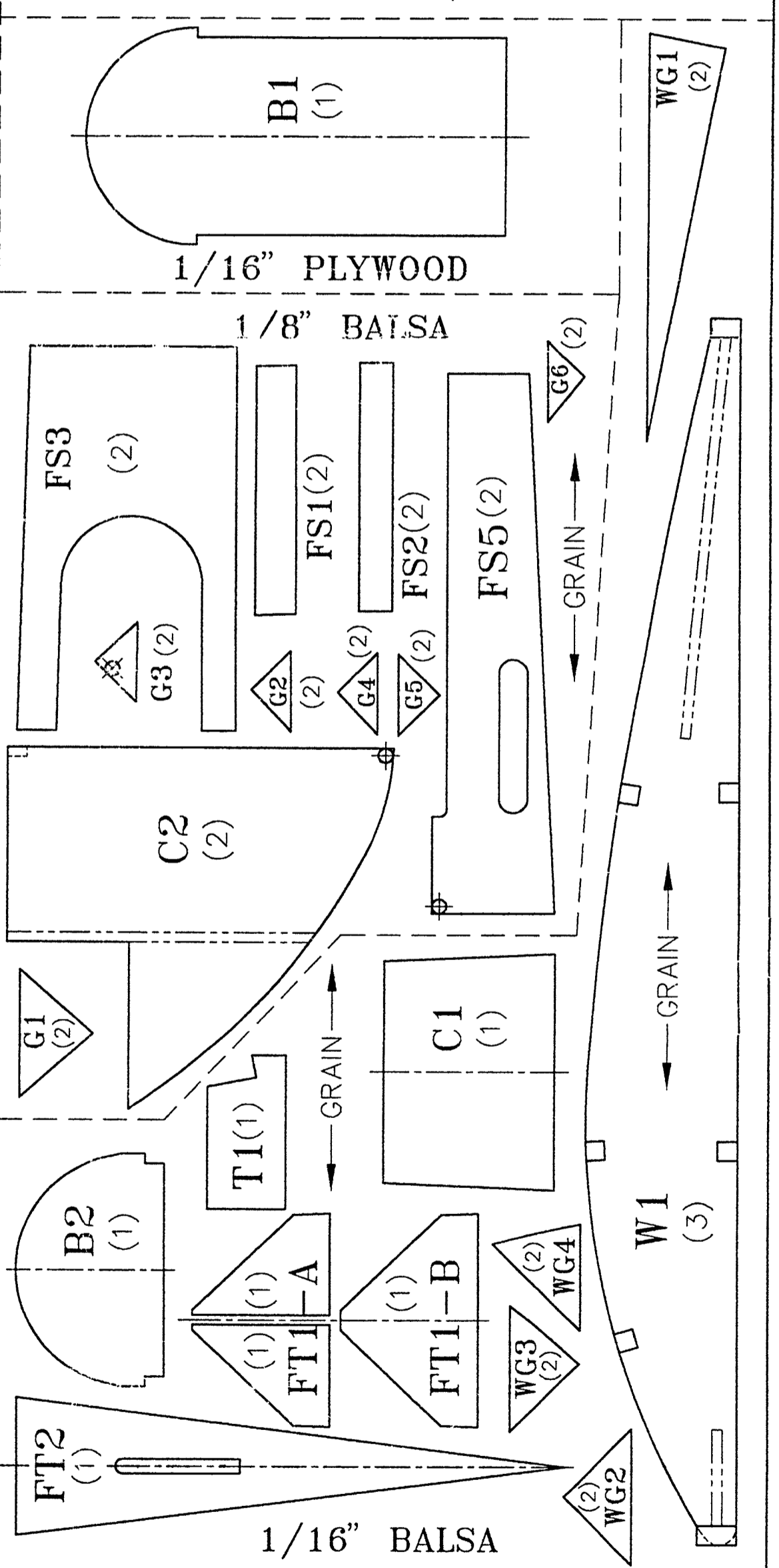
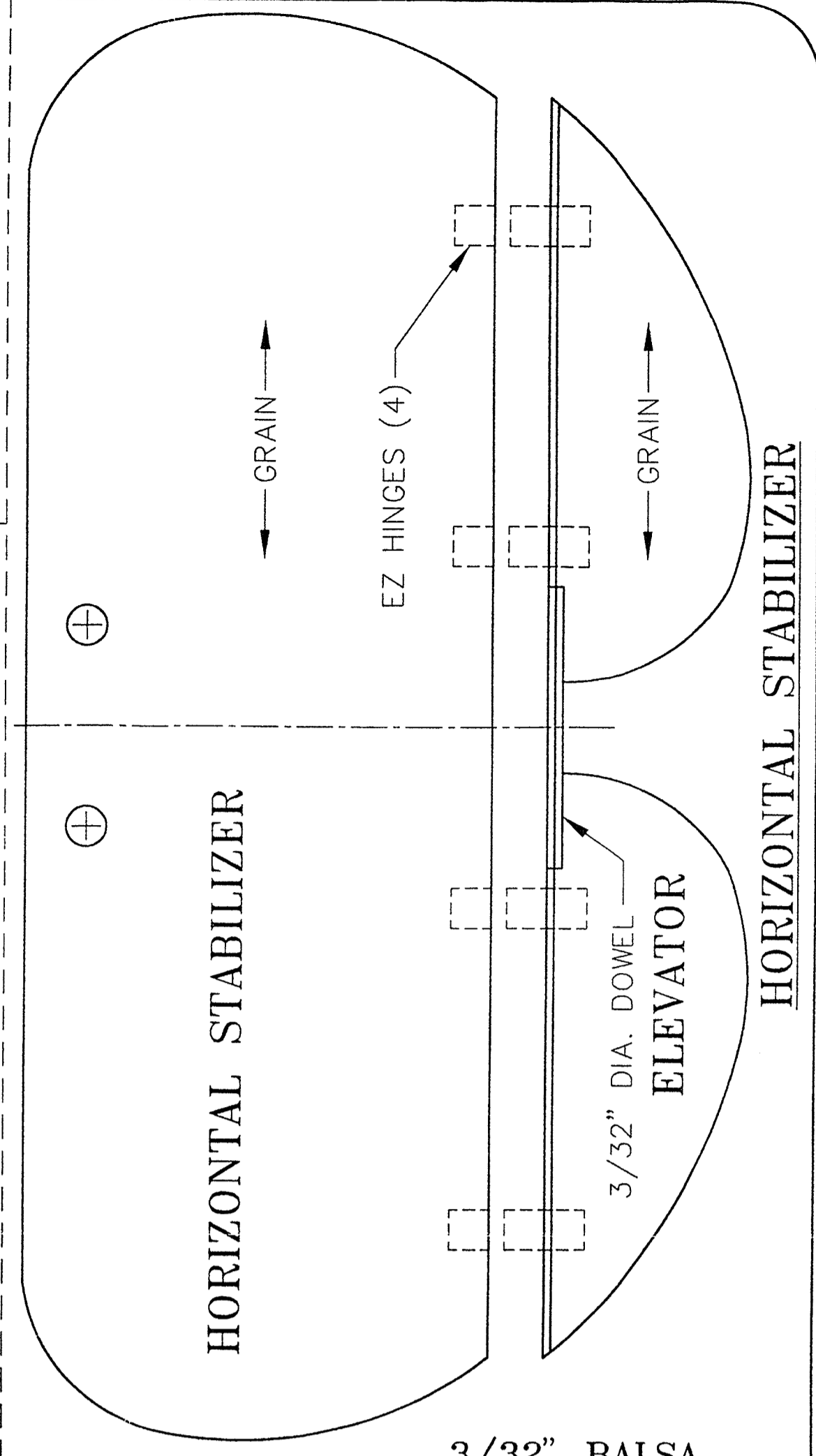
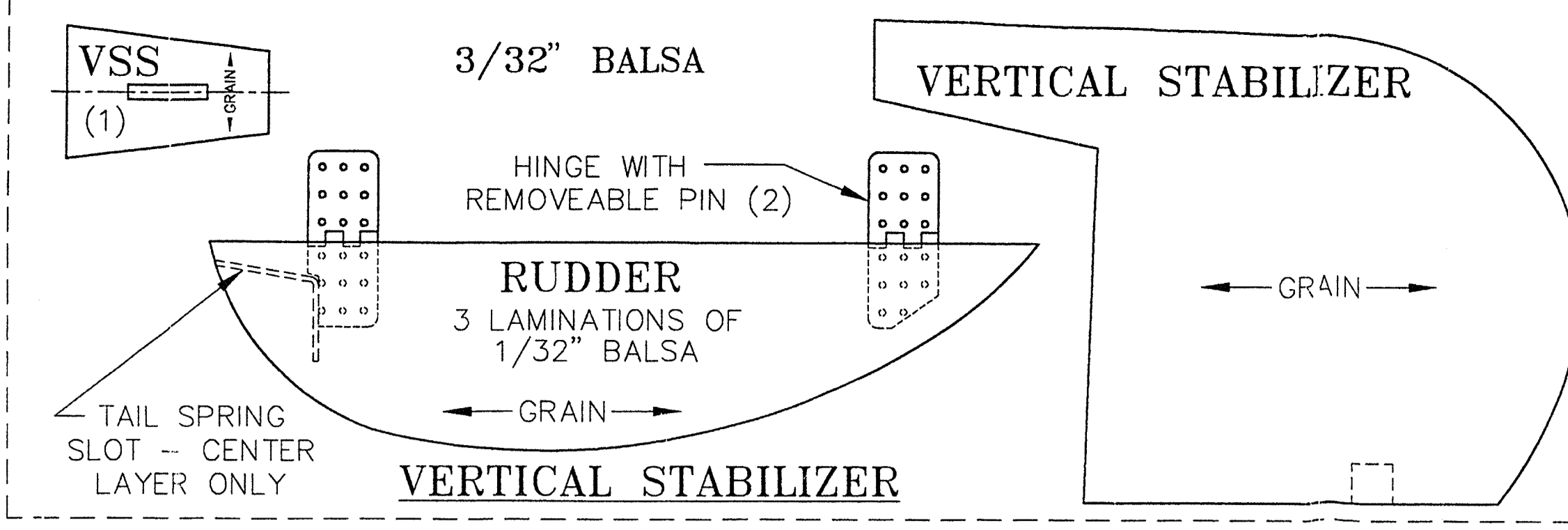
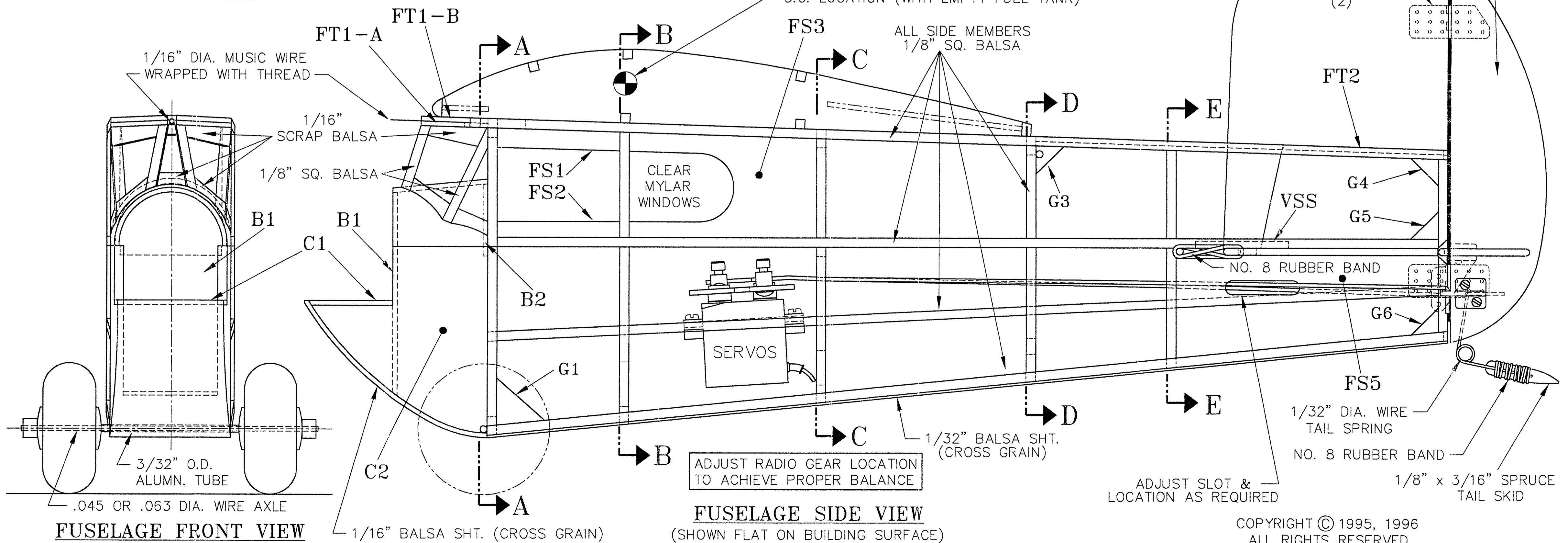
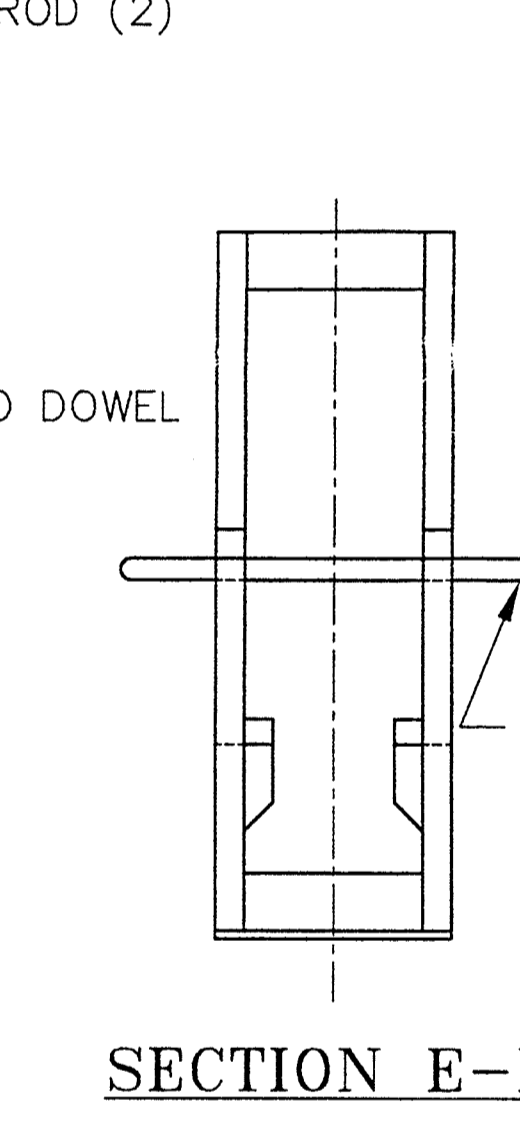
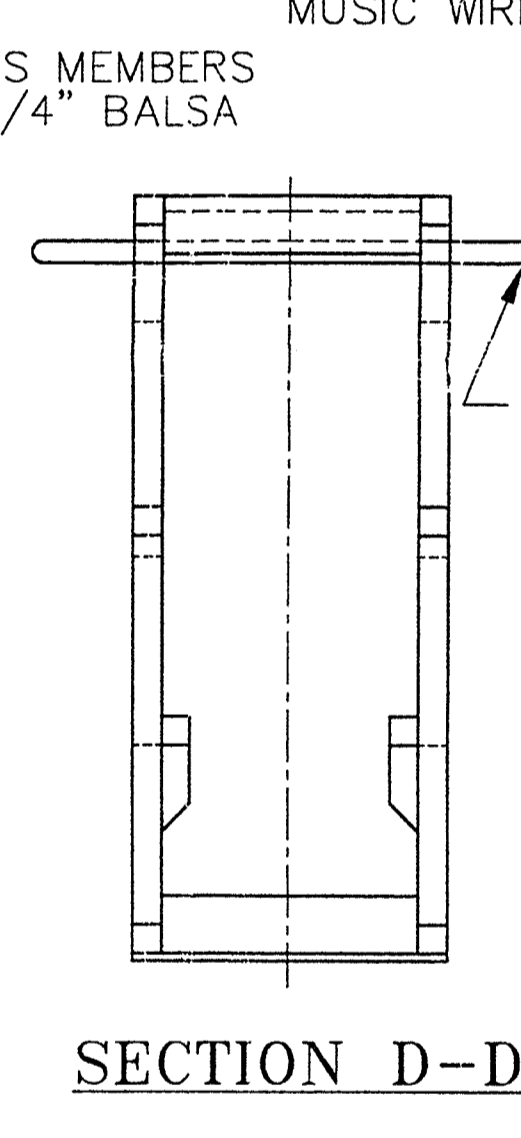
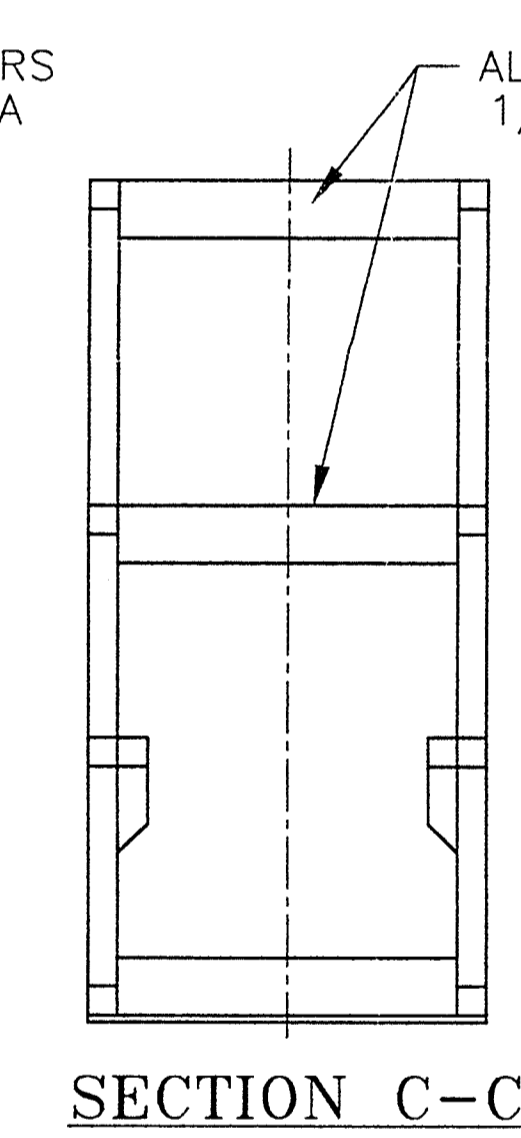
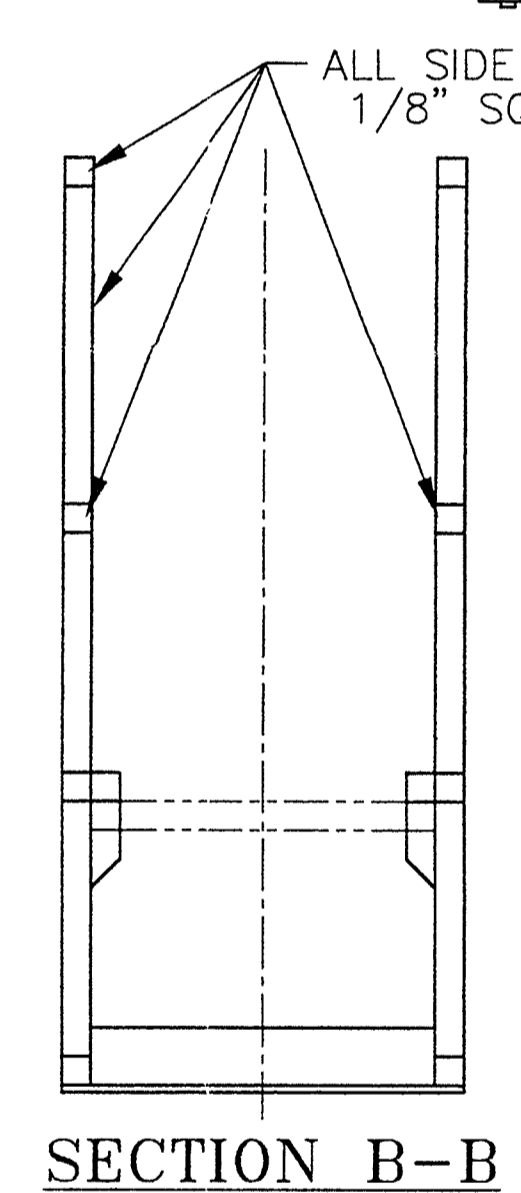
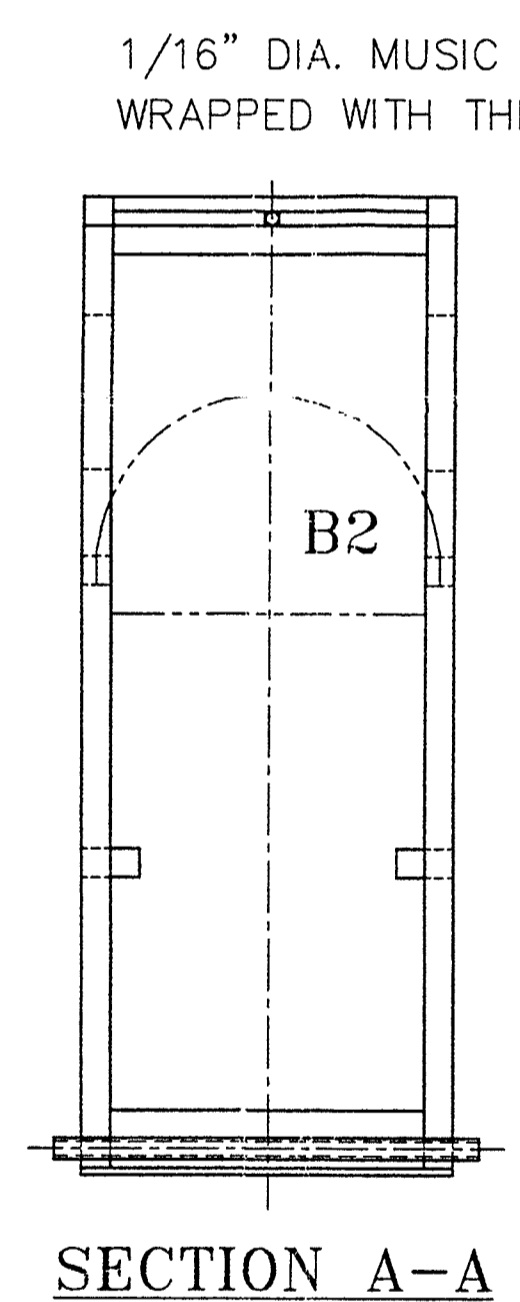
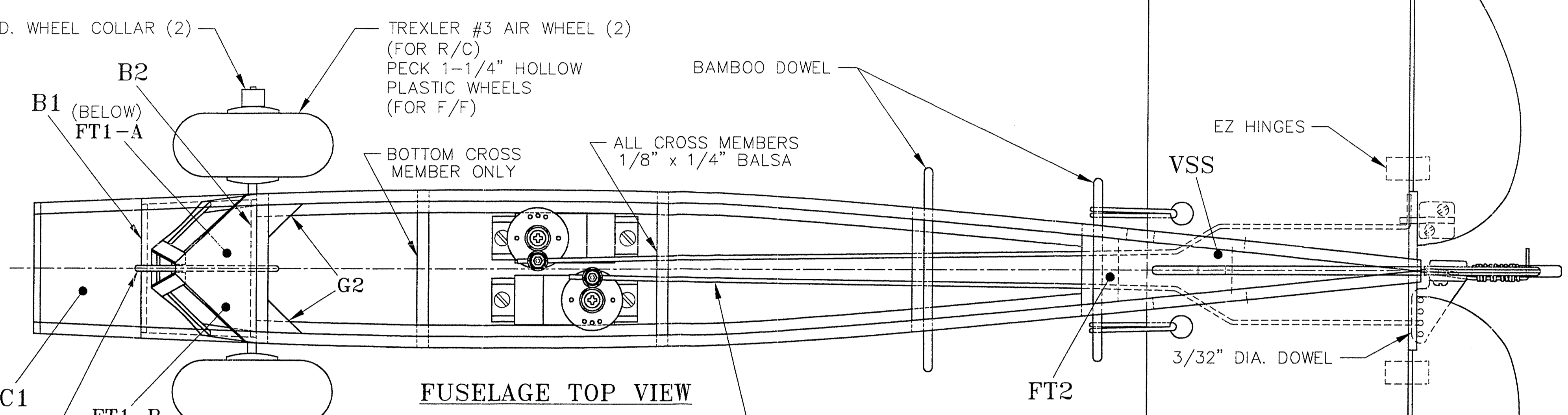
OUTER LINE SHOWS LOCATION OF WING TIP ASSEMBLED FLAT ON BUILDING SURFACE



Edit by Hlsat.



NOTE ON COVERING:
WE SUGGEST USING LITESPAN COVERING (WITH BALSALOC ADHESIVE) FOR LIGHT WEIGHT. LITESPAN & BALSALOC ARE BOTH AVAILABLE FROM CLANCY AVIATION.



CLANCY AVIATION
219 W. 2nd AVENUE, MESA, AZ. 85210
TEL: (602)649-1534 FAX: (602)649-9040

LADY BUG™
.020 TO .051 POWERED SMALL FIELD R/C AIRPLANE
ORIGINAL DESIGN BY: ANDY CLANCY
REVISED DESIGN BY: DICK MILLER
CAD DRAWING BY: CRAIG HAVILAND
SCALE: 1:1 | REV: B 4/97 | SHT: 1 OF 1

COPYRIGHT © 1995, 1996
ALL RIGHTS RESERVED