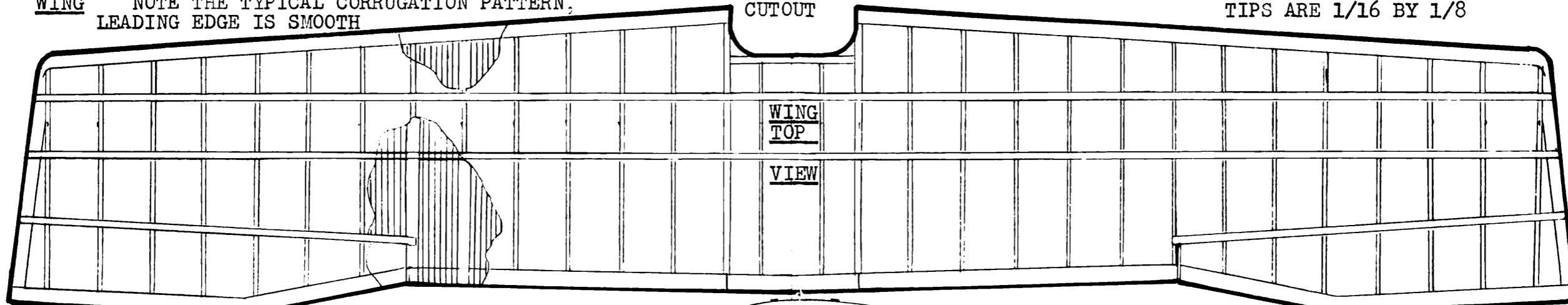


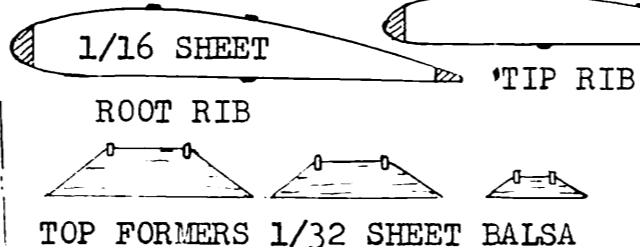
WING NOTE THE TYPICAL CORRUGATION PATTERN,  
LEADING EDGE IS SMOOTH

COCKPIT  
CUTOUT

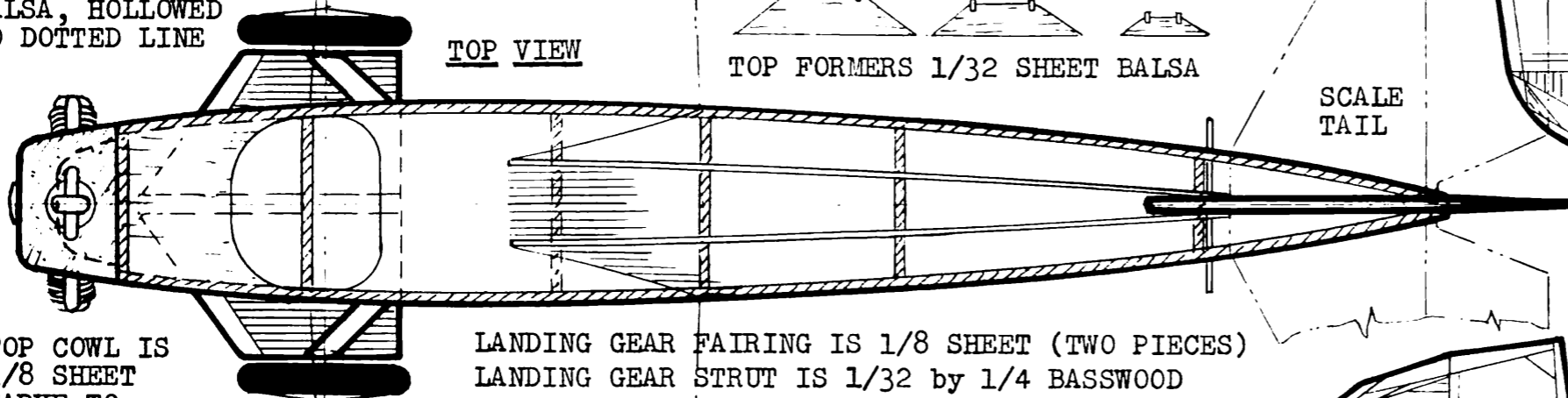
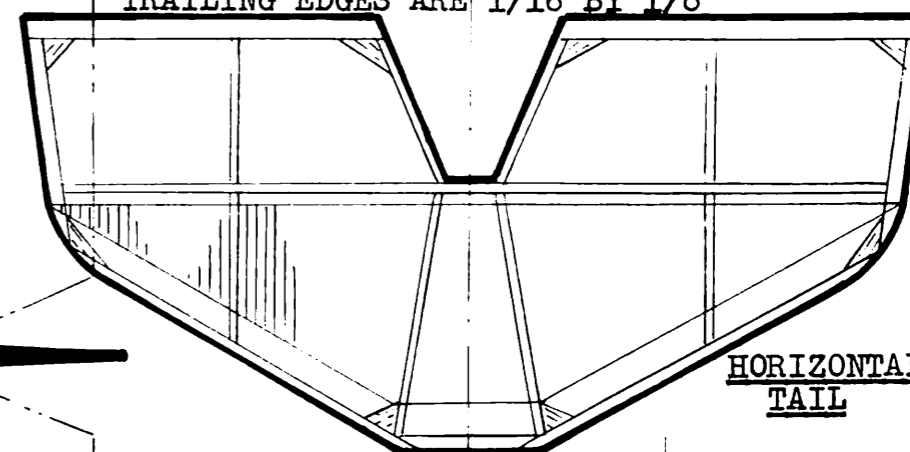
LEADING EDGE STOCK IS LIGHT WEIGHT 1/8 BY 1/4 Balsa  
TIPS ARE 1/16 BY 1/8



ALL SPARS ARE .012 BY 1/16 BASSWOOD  
ALL RIBS EXCEPT ROOT RIBS ARE 1/32 SHEET  
NOSE BLOCK IS SOLID Balsa, HOLLOWED TO DOTTED LINE



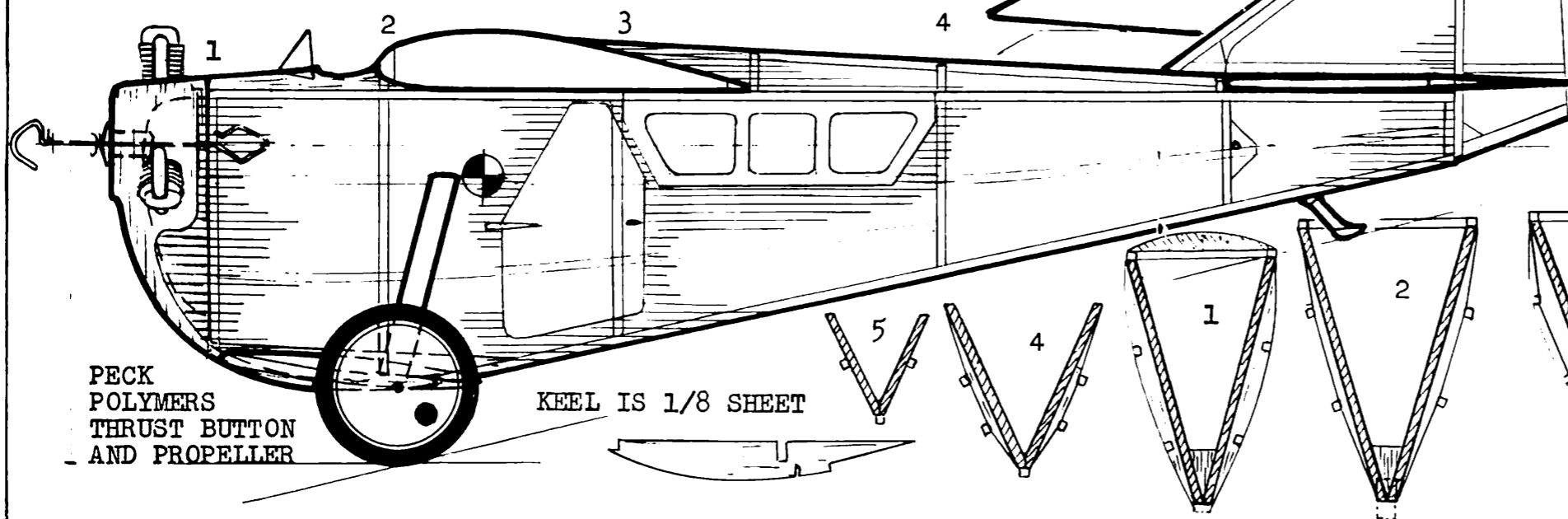
TRAILING EDGES ARE 1/16 BY 1/8



TOP COWL IS 1/8 SHEET  
CARVE TO CONTOUR

LANDING GEAR FAIRING IS 1/8 SHEET (TWO PIECES)  
LANDING GEAR STRUT IS 1/32 BY 1/4 BASSWOOD  
WHEELS BY F. HUNGERFORD, COVER SPOKES WITH PAPER DISK, NOTE VALVE ACCESS HOLE

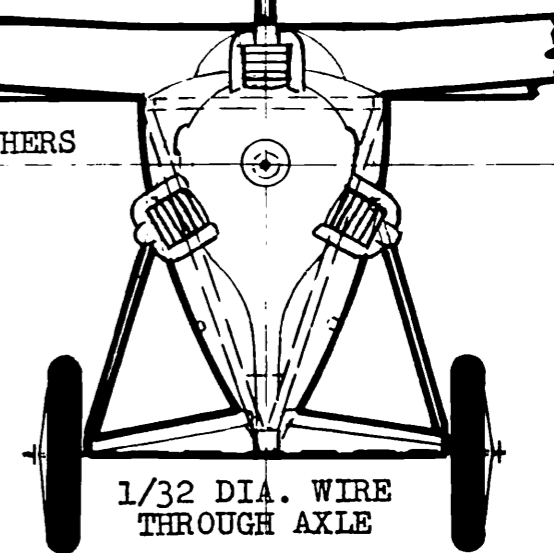
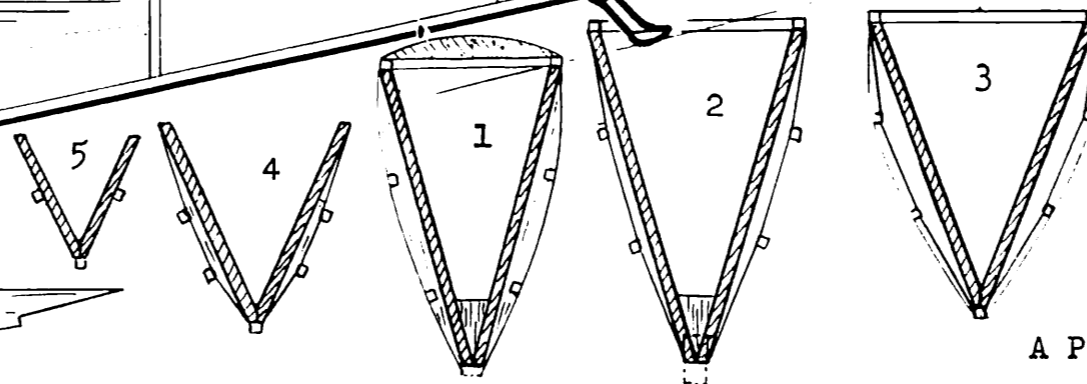
THE ANT-2 WAS BUILT USING CORRUGATED METAL STRUCTURE. LEADING EDGES, DOOR, AND WINDOW FRAMES WERE SMOOTH METAL. ALL MOVABLE SURFACES WERE PROBABLY FABRIC COVERED. NOTE DIHEDRAL



WILLIAMS BROTHERS CYLINDERS (3)

PECK POLYMERS THRUST BUTTON AND PROPELLER

KEEL IS 1/8 SHEET



A PEANUT SCALE TUPOLEV ANT-2 BY

*Walt Murney*