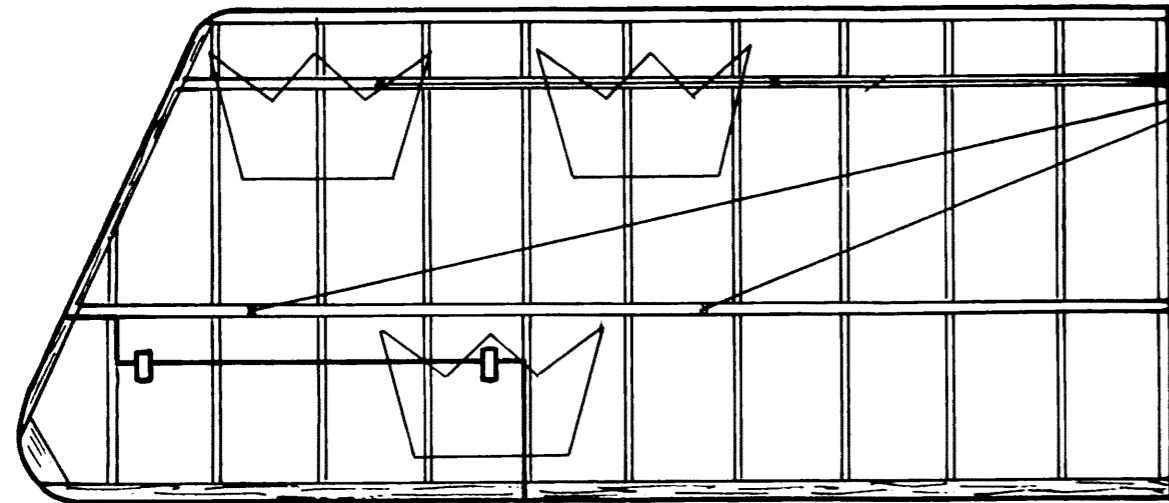
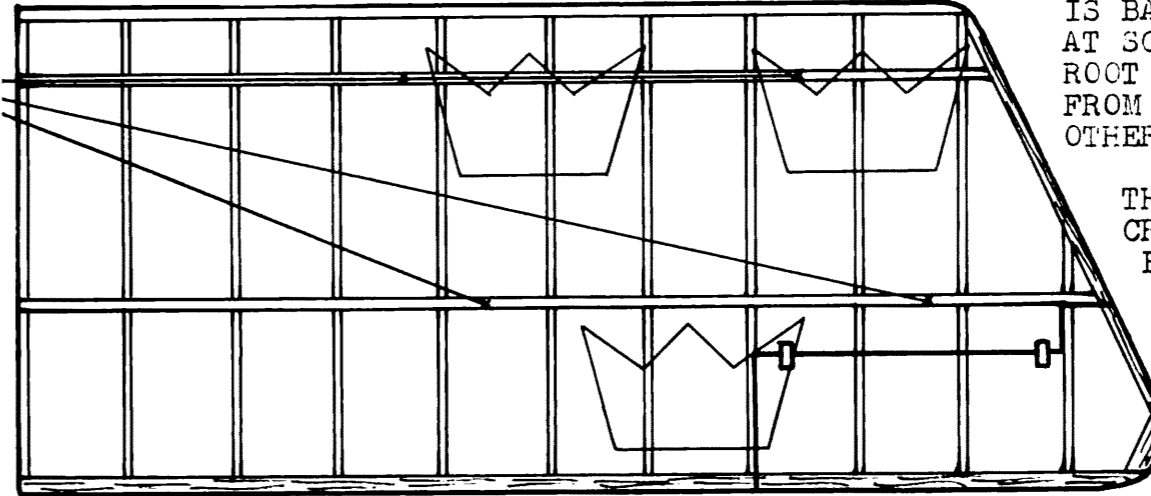


WING TIP IS CURVED TO MATCH BOTTOM OF AIRFOIL CONTOUR.

NOTE WHERE WING WIRES GO - THE SMALL "X" MARKS THE SPOT. ALL WING STRUCTURE IS BALSA. RIBS ARE AT SCALE SPACING. ROOT RIBS ARE CUT FROM 1/16TH SHEET. OTHERS ARE LIGHTER.

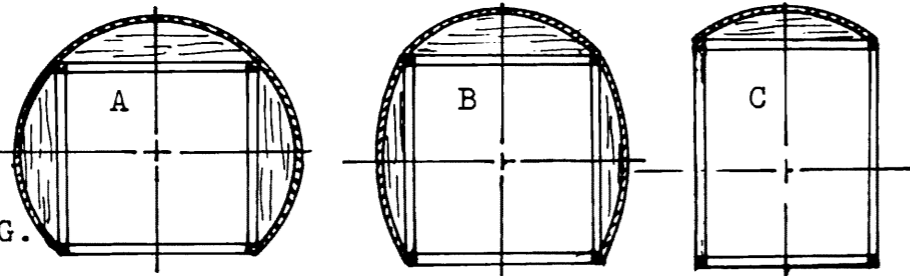


WING TOP VIEW



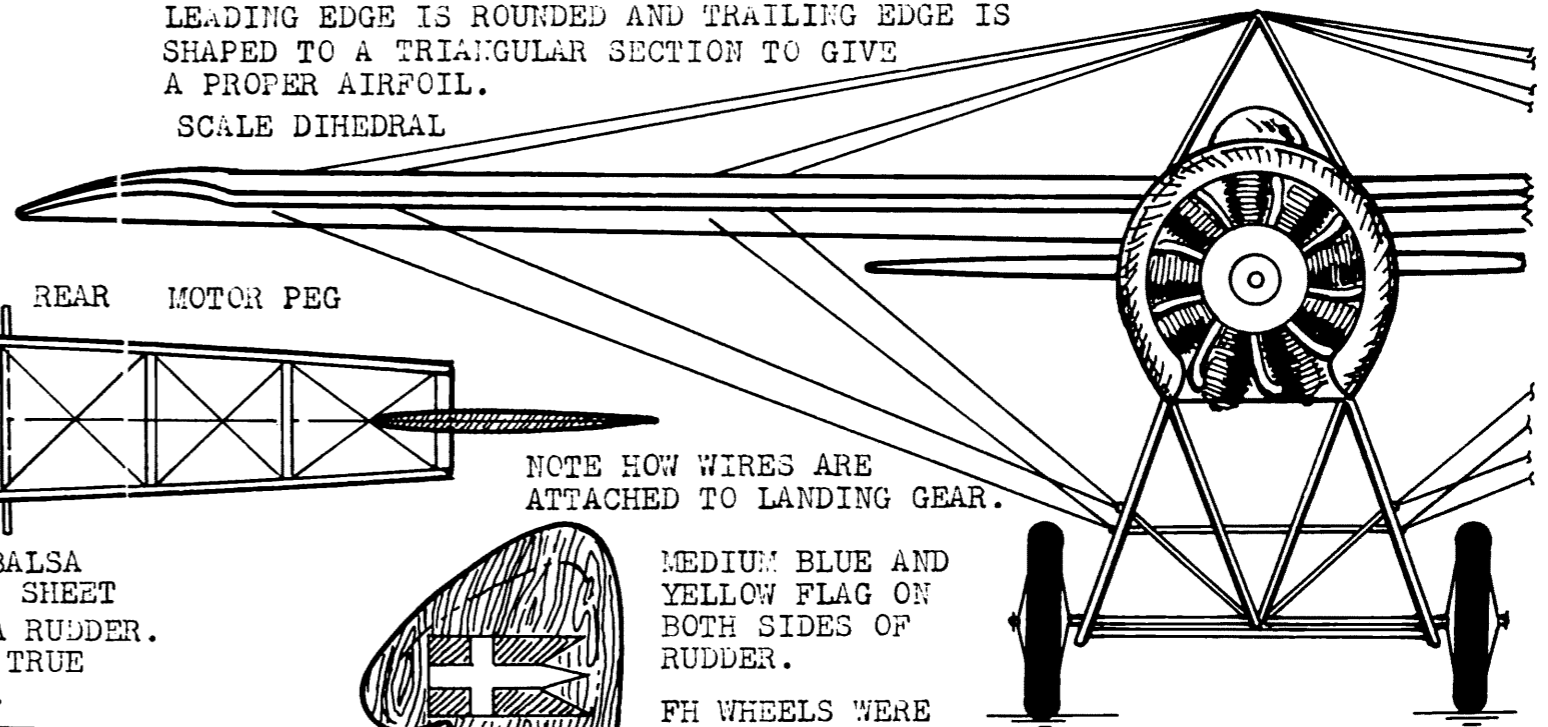
THE THREE CROWNS ARE SOLID BLACK ON TOP AND BOTTOM OF BOTH WINGS.

AN ALTERNATE NOSE BLOCK CAN BE SOLID OR LAMINATED AND THE ENGINE DEPICTED BY A SIMPLE PAINTING.



FORMER DETAILS

LEADING EDGE IS ROUNDED AND TRAILING EDGE IS SHAPED TO A TRIANGULAR SECTION TO GIVE A PROPER AIRFOIL. SCALE DIHEDRAL



NOTE HOW WIRES ARE ATTACHED TO LANDING GEAR.

MEDIUM BLUE AND YELLOW FLAG ON BOTH SIDES OF RUDDER.

FH WHEELS WERE USED (HUNGERFORD)

FRONT VIEW

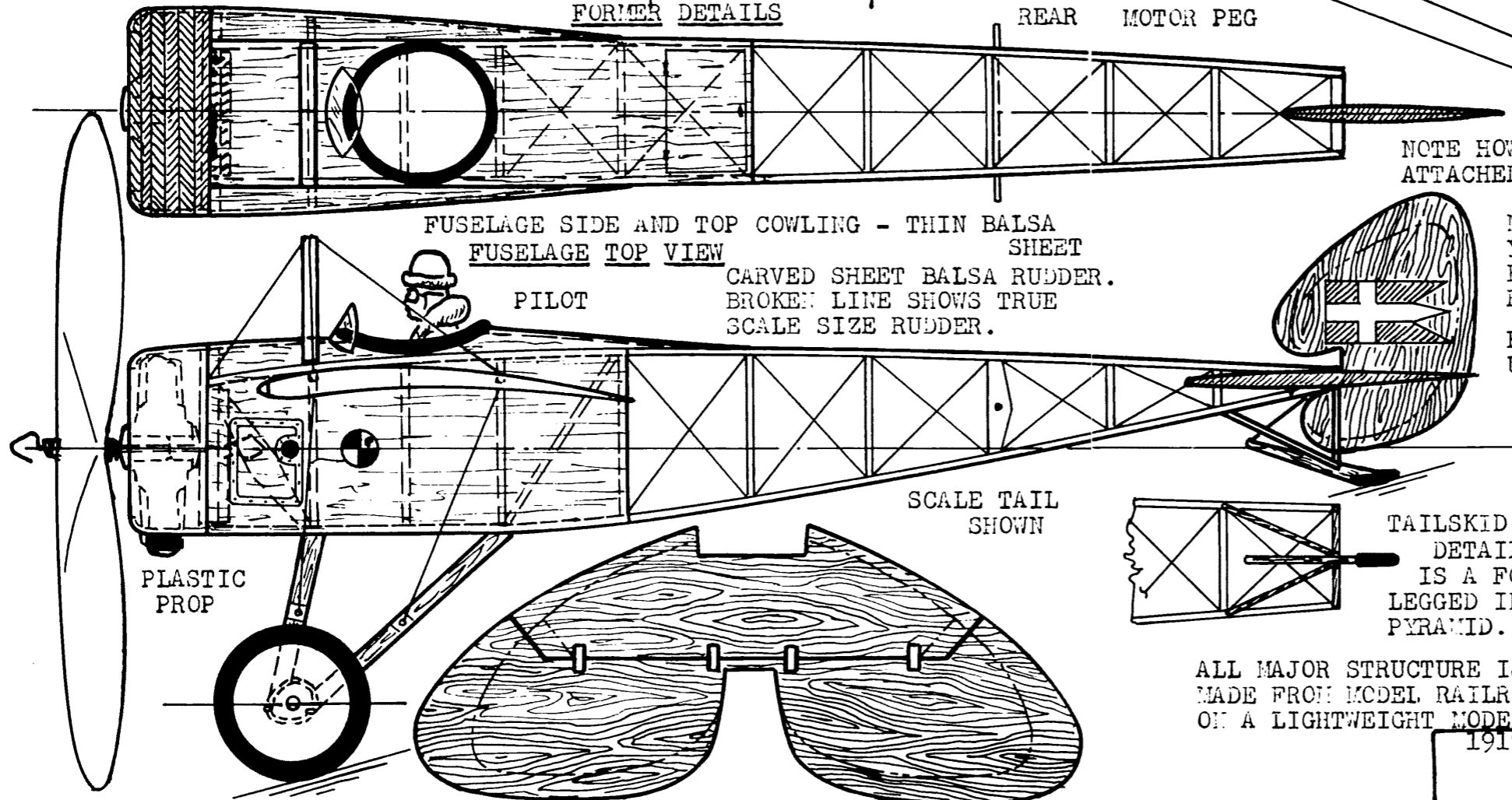
(PROPELLER OMITTED FOR CLARITY)

FUSELAGE SIDE AND TOP COWLING - THIN BALSA SHEET

FUSELAGE TOP VIEW

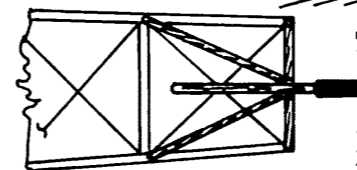
CARVED SHEET BALSA RUDDER. BROKEN LINE SHOWS TRUE SCALE SIZE RUDDER.

PILOT



SCALE TAIL SHOWN

TAILSKID SUPPORT DETAIL - IT IS A FOUR LEGGED INVERTED PYRAMID.



ALL MAJOR STRUCTURE IS BALSA, EXCEPT THE EXTERNAL STRUTS WERE ALL MADE FROM MCEL RAILROAD BASSWOOD STOCK. (FIRM BALSA WOULD WORK ON A LIGHTWEIGHT MODEL.)

COLOR SCHEME:

CLEAR DOPED FABRIC (CONDENSER PAPER) AND VARNISHED PLYWOOD (DOPED BALSA) ALUMINUM COWL BLACK TIRES, SKID, ENGINE CYLINDERS, INSIGNIA AND OTHER DETAILS.

1917 THULIN K-JAGAREN A SWEDISH PEANUT

BY *Walt Mooney*