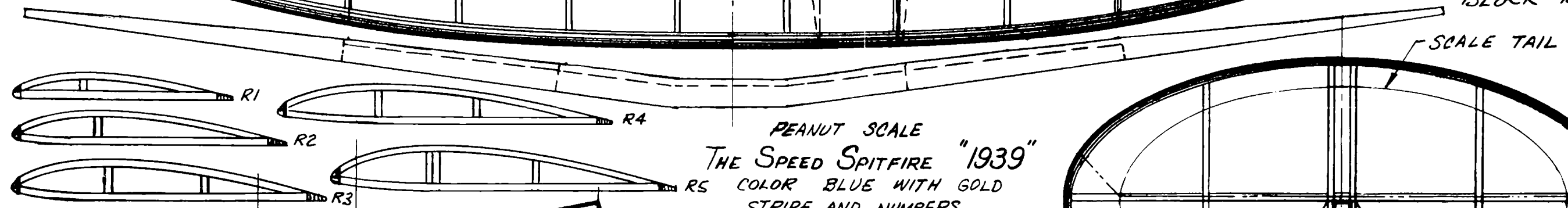
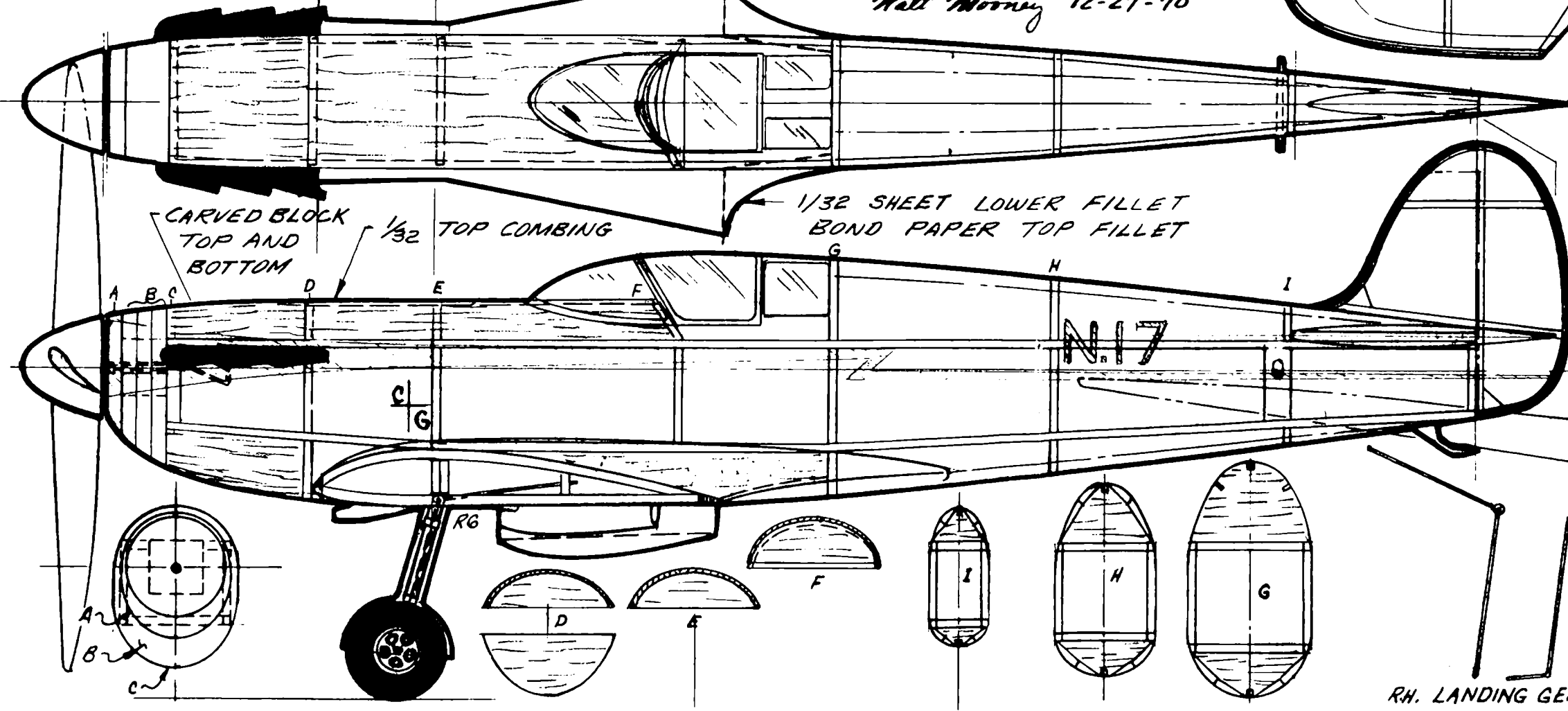
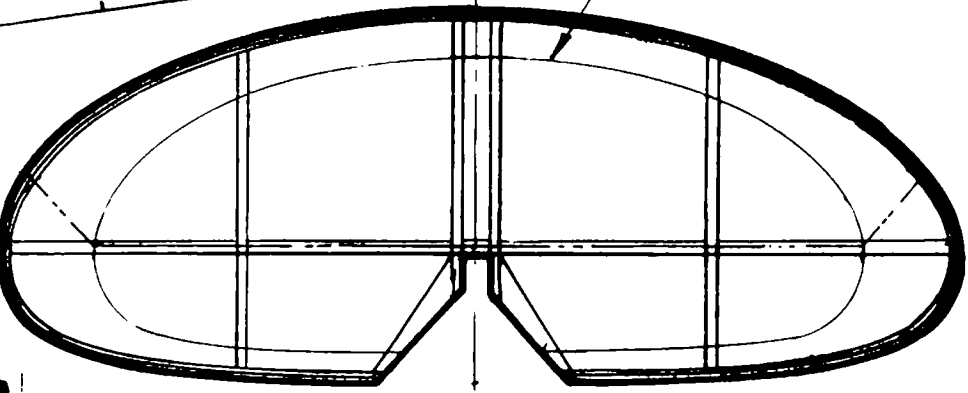


TYPICAL ALTERNATE RIB AND WING CONSTRUCTION

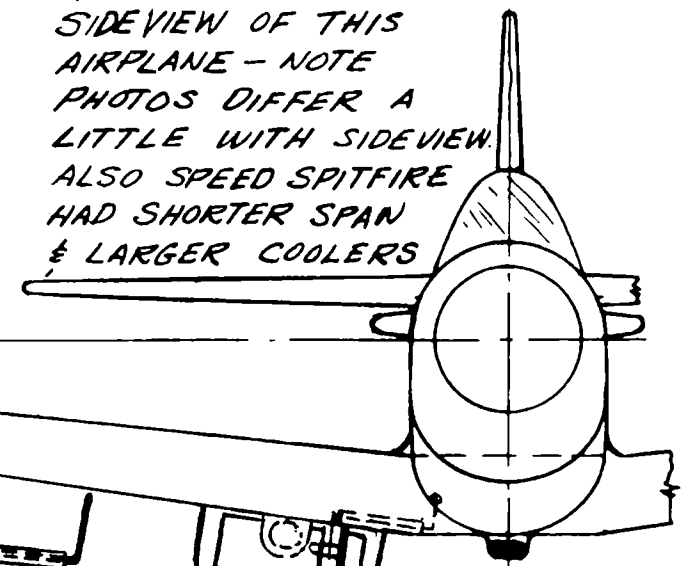
NOTE: • RADIATOR IS MADE UP OF 3 PIECES FRONT & BACK LEFT OPEN FOR AIR PASSAGE
• OIL COOLER, CARBURETER AIR INLET, AND EXHAUST STACKS ARE CARVED BLOCK Balsa.



PEANUT SCALE
THE SPEED SPITFIRE "1939"
R5 COLOR BLUE WITH GOLD STRIPE AND NUMBERS
Walt Morrey 12-27-70



PROFILE NO. 41 "SPITFIRE I & II" HAS PHOTOS AND A COLOR SIDEVIEW OF THIS AIRPLANE - NOTE PHOTOS DIFFER A LITTLE WITH SIDEVIEW. ALSO SPEED SPITFIRE HAD SHORTER SPAN & LARGER COOLERS



RADIATOR IS ON R.H. SIDE
OIL COOLER IS ON L.H. SIDE

RH. LANDING GEAR WIRE