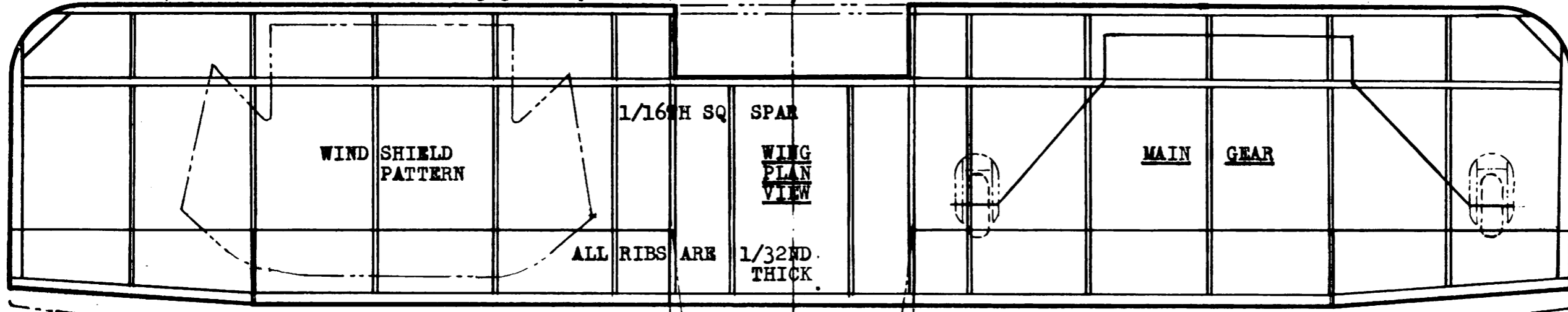


1/8TH SHEET TIP PIECES

3/32ND SQUARE LEADING EDGE, REMOVE CENTER PORTION AFTER ASSEMBLY



ALL RIBS ARE 1/32ND THICK.

1/20TH BY 1/8TH TRAILING EDGE.

LANDING GEAR WIRE PATTERNS

NOSE GEAR

DIHEDRAL

ALUMINUM TUBE REAR MOTOR PEG

TYPICAL HORIZONTAL TAIL RIB

BODY PLAN VIEW

USE 1/4TH THICK BLOCK Balsa PIECES FOR NOSE BLOCK, COWL SIDES, AND COWL BOTTOM. -- COWL TOP IS MADE FROM 1/32ND SHEET WRAPPED OVER FORMERS

ALL LONGERONS AND MOST UPRIGHTS AND CROSS PIECES ARE 1/20TH SQUARE FIRM Balsa STICKS.

VERTICAL TAIL AIRFOILS BOND PAPER DORSAL FAIRING

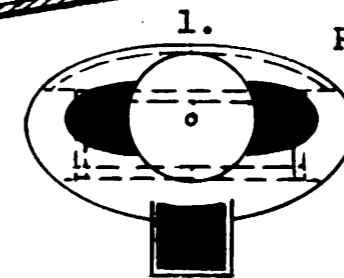
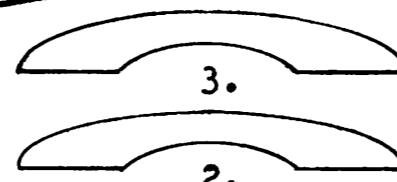
BODY SIDE VIEW

SPAR PATTERN

PAPER AIR INLET

OPTIONAL WHEEL PANTS ARE MADE FROM THREE Balsa SHEET LAMINATES

NOSE PLUG 1/4TH THICK



POTTIER P100TS A FRENCH HOMEBUILT PEANUT BY *Walt Mooney* 05-15-81