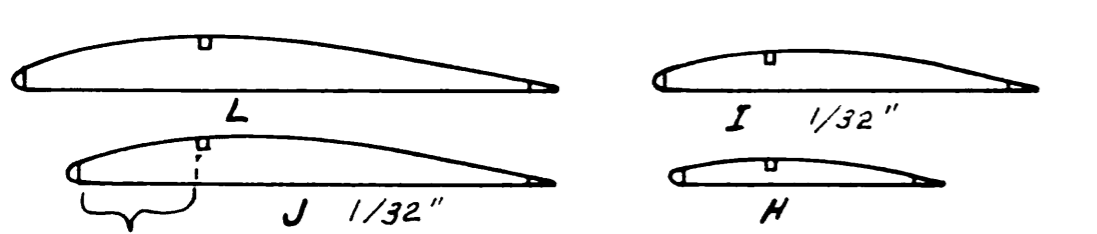
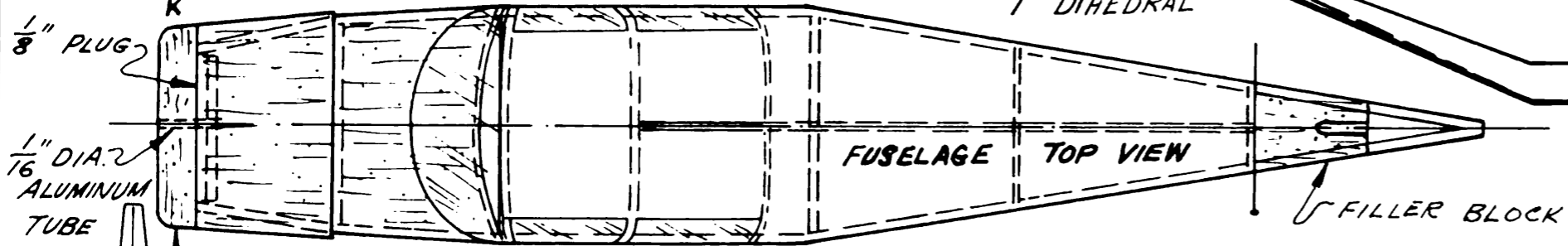
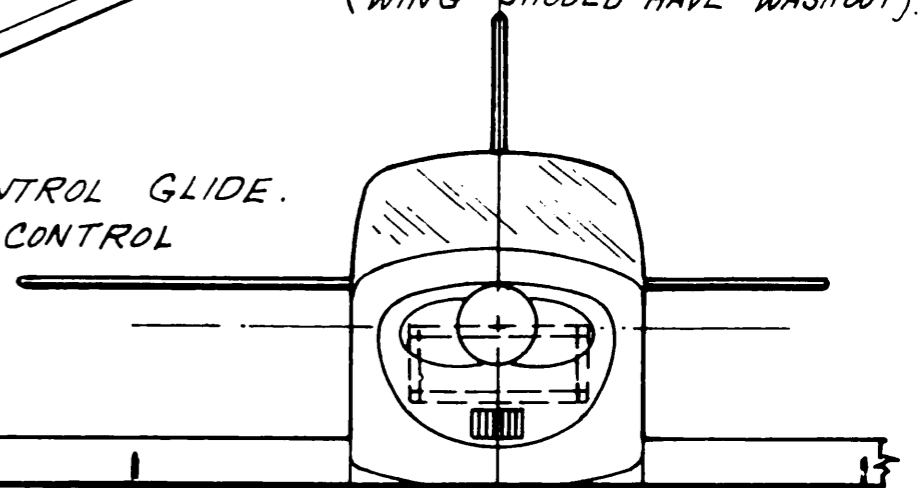


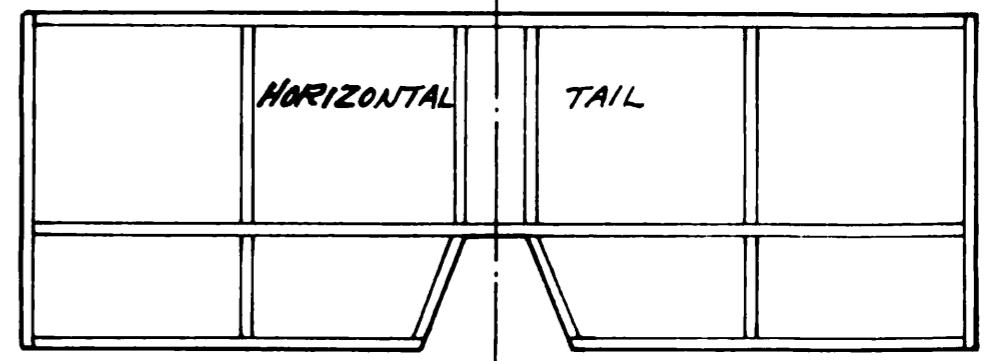
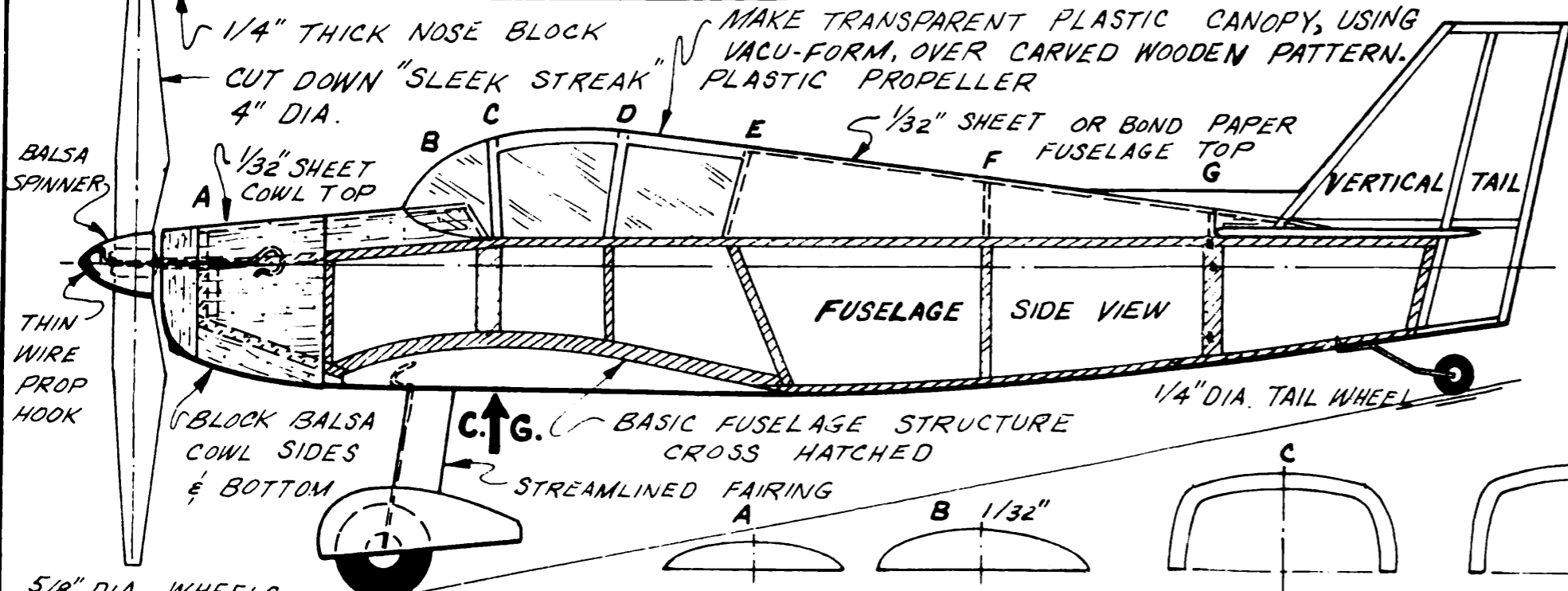
- MODEL MAY BE FLOWN WITH ONE LOOP OF $1/8"$ FLAT RUBBER $9"$ LONG.
- BALLAST TO GET C.G. AT POSITION SHOWN.
- TRAILING EDGE OF WING TIPS SHOULD BE $1/16"$ HIGHER THAN LEADING EDGE (WING SHOULD HAVE WASHOUT).



- TRAILING EDGE $1/16" \times 1/8"$ TAPERED
- WARP TRAILING EDGE OF TAIL TO CONTROL GLIDE.
 - USE DOWN AND/OR SIDE THRUST TO CONTROL POWERED FLIGHT.



- $1/32"$ DIA. LANDING GEAR WIRE
- PLASTIC WHEEL PANTS, MAKE USING WOODEN MOLD & MATTEL "VACU-FORM"
- BALSA IF DESIRED.



$5/8"$ DIA WHEELS

• ALL PARTS, UNLESS OTHERWISE NOTED, ARE $1/16"$ THICK BALSA BY THE SHAPE SHOWN COVER WITH "SUPERFINE" OR "JAP TISSUE".

PEANUT SCALE
 JODEL D. 150 "MASCARET" 6-20-68
Halt Mooney