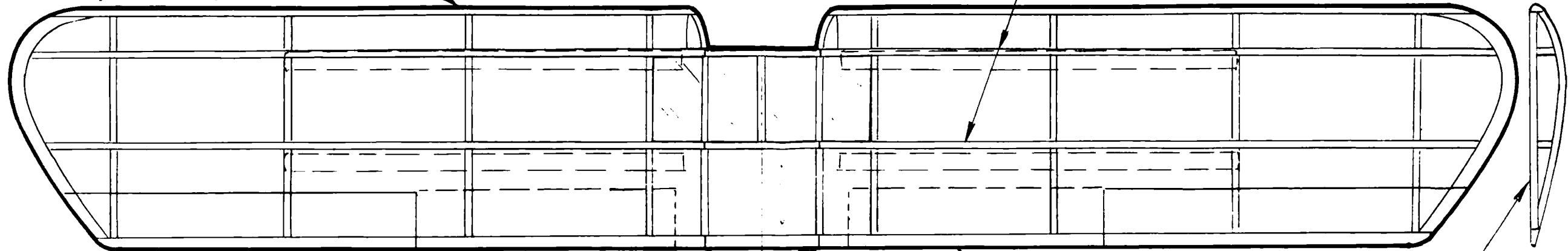


1/16TH BY 1/8TH LEADING EDGES

CUT RIBS AND TIPS FROM 1/16TH SHEET Balsa

SPARS ARE 1/16TH SQUARE



NOTE: FOUR WINDOWS IN TOP OF WING

DIHEDRAL BREAKS

1/16TH BY 1/8TH TRAILING EDGES

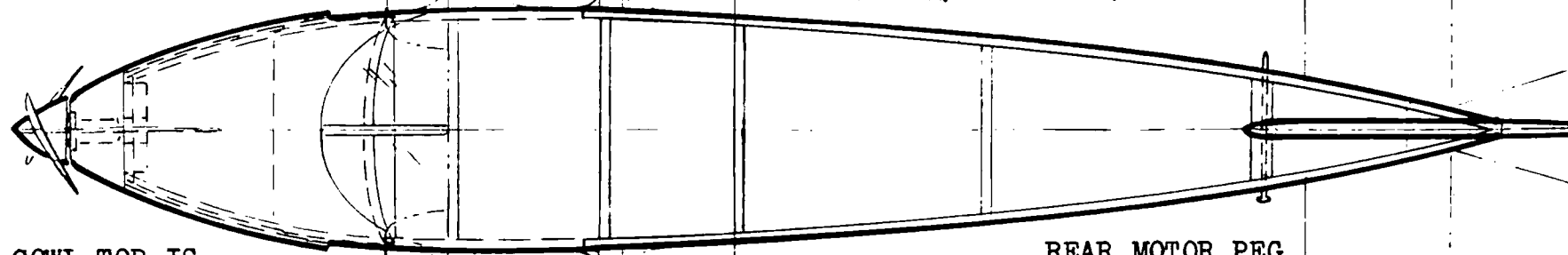
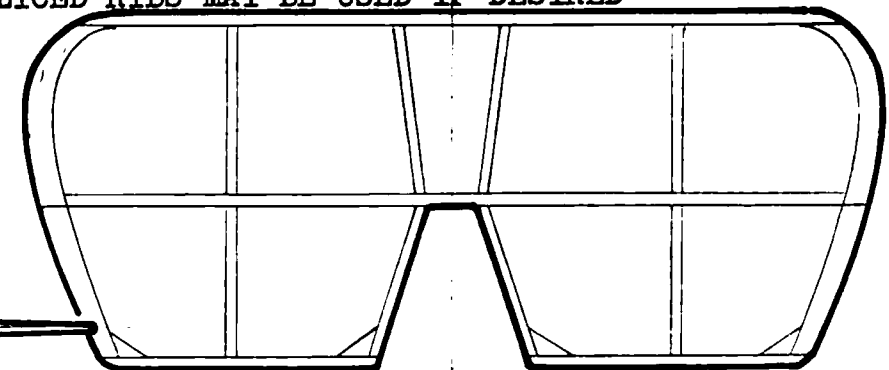
SLICED RIBS MAY BE USED IF DESIRED

NOTE:

ALL PARTS ARE Balsa UNLESS OTHERWISE NOTED.  
USE THIN CLEAR PLASTIC FOR WINDSHIELD AND WINDOWS  
USE 1/32ND DIA. OR THINNER PIANO WIRE FOR LANDING GEAR WIRE  
AND FOR PROPELLER HOOK

WING

FUSELAGE LONGERONS, UPRIGHTS, AND CROSS PIECES ARE 1/16TH SQUARE EXCEPT AS NOTED  
UPRIGHTS 1/16TH BY 1/8TH AT REAR MOTOR PEG

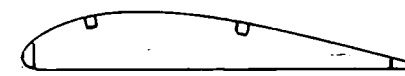


REAR MOTOR PEG

FUSELAGE TOP VIEW

HORIZONTAL AND VERTICAL TAILS MAY BE SHEET Balsa IF DESIRED

ALL TAIL PIECES ARE 1/16TH THICK Balsa



WING RIBS



CENTER SECTION NOSE RIBS



COWL TOP FORMERS

COWL TOP IS

1/32ND SHEET OVER

THREE FORMERS, OR

IT CAN BE CARVED FROM BLOCK Balsa AND HOLLOWED OUT FOR RUBBER CLEARANCE

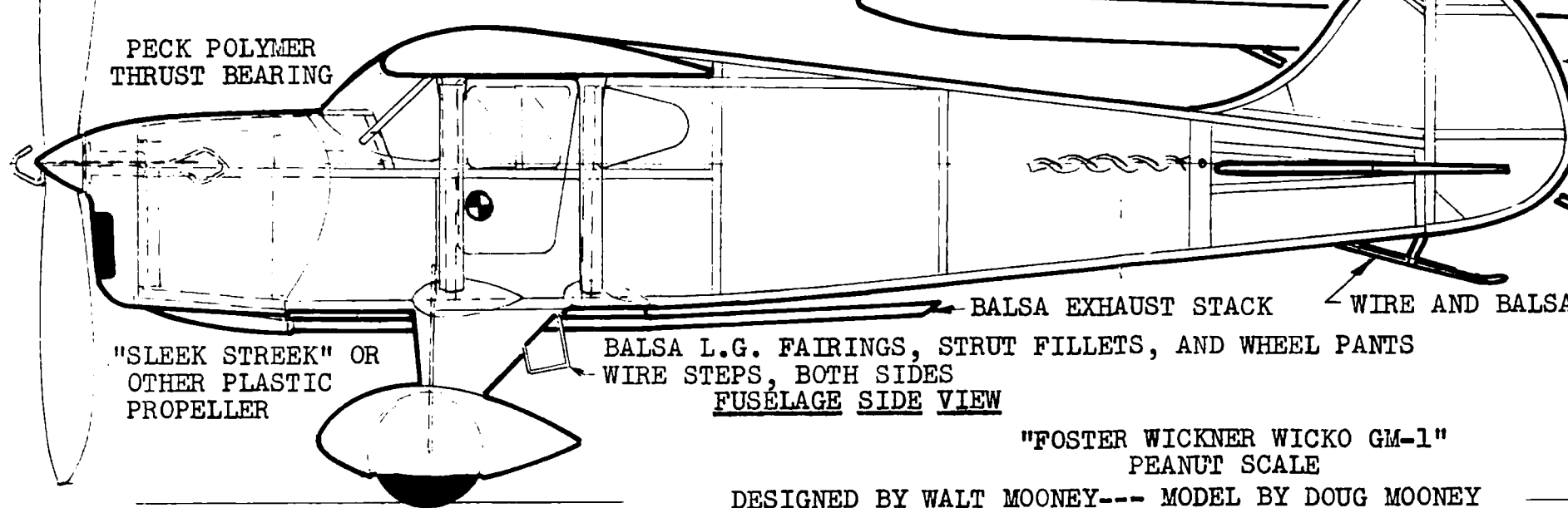
COWL SIDES ARE COVERED WITH 1/32ND SHEET Balsa

COWL BOTTOM IS COVERED WITH 1/32ND SHEET Balsa

CARVE NOSE FROM BLOCK Balsa

LAMINATED OUTLINE

PECK POLYMER THRUST BEARING



Balsa EXHAUST STACK

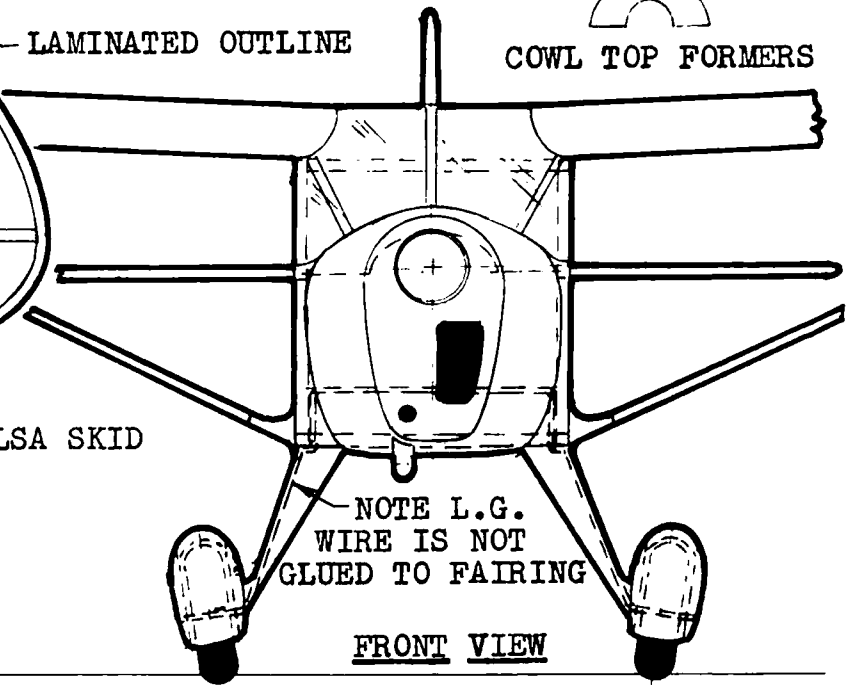
WIRE AND Balsa SKID

"SLEEK STREEK" OR OTHER PLASTIC PROPELLER

Balsa L.G. FAIRINGS, STRUT FILLETS, AND WHEEL PANTS

WIRE STEPS, BOTH SIDES

FUSELAGE SIDE VIEW



NOTE L.G. WIRE IS NOT GLUED TO FAIRING

FRONT VIEW

"FOSTER WICKNER WICKO GM-1"  
PEANUT SCALE

DESIGNED BY WALT MOONEY--- MODEL BY DOUG MOONEY