

# SCORPION

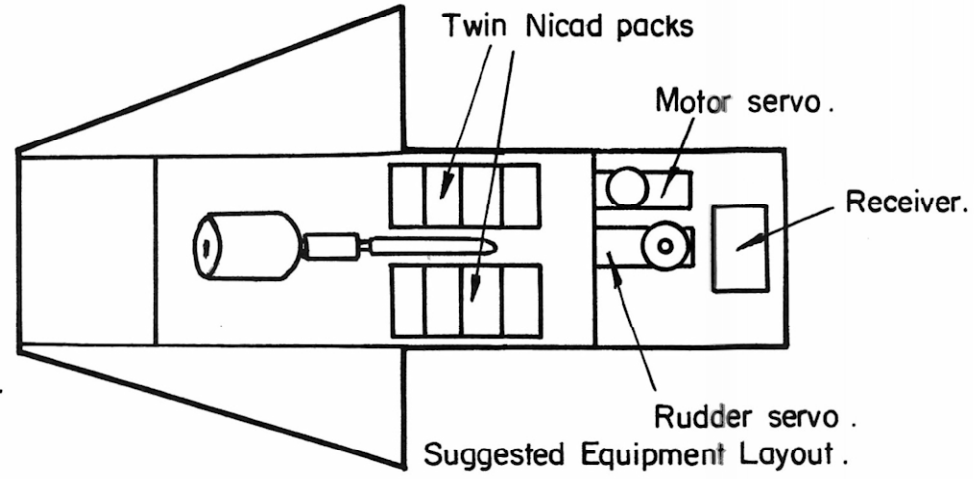
By Glynn Guest

52a.

53a.

54a.

S1. - 2 req.



Notch for propeller.

B2

B1.

B3

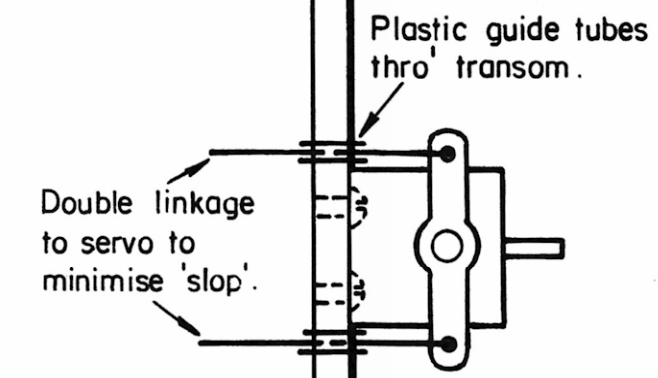
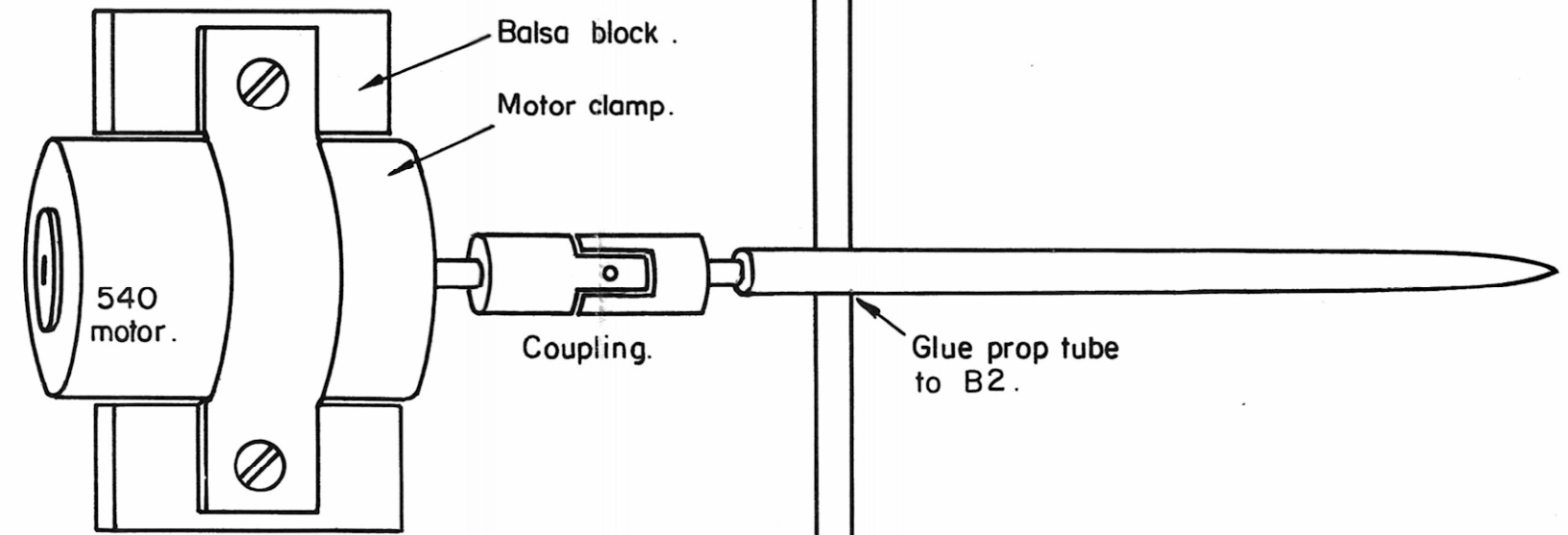
B4

B1.

B2

B3

B4



S4a - 2 req.

S4b - 2 req.

S2a - 2 req.

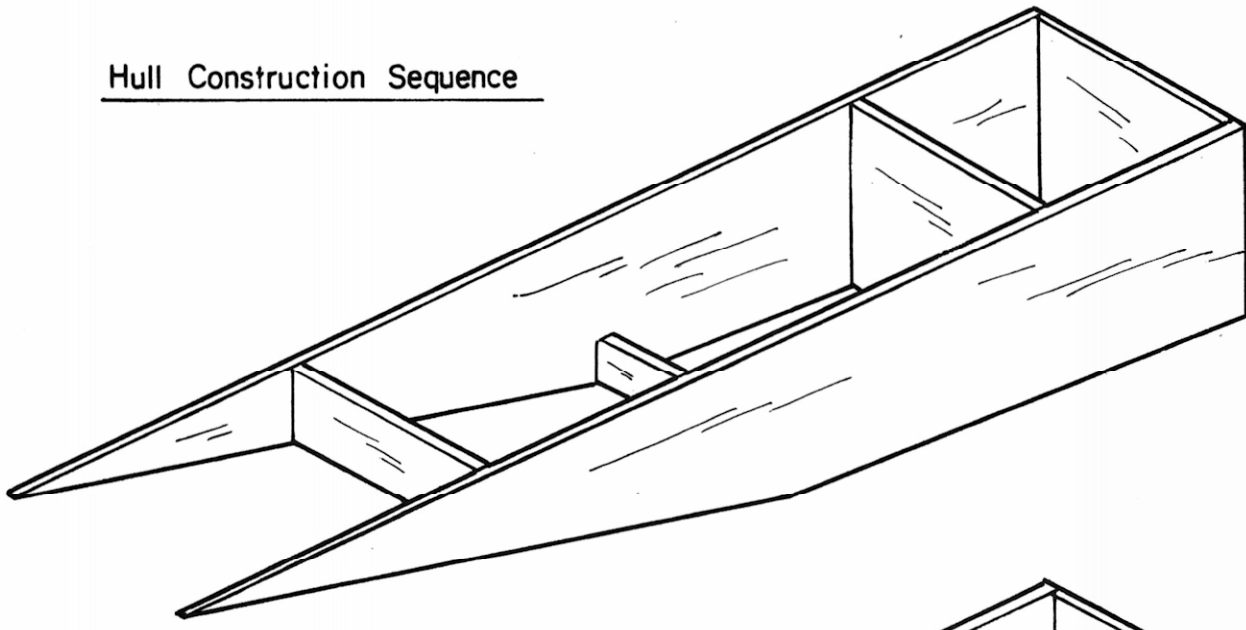
S3a - 2 req.

S2b - 2 req.

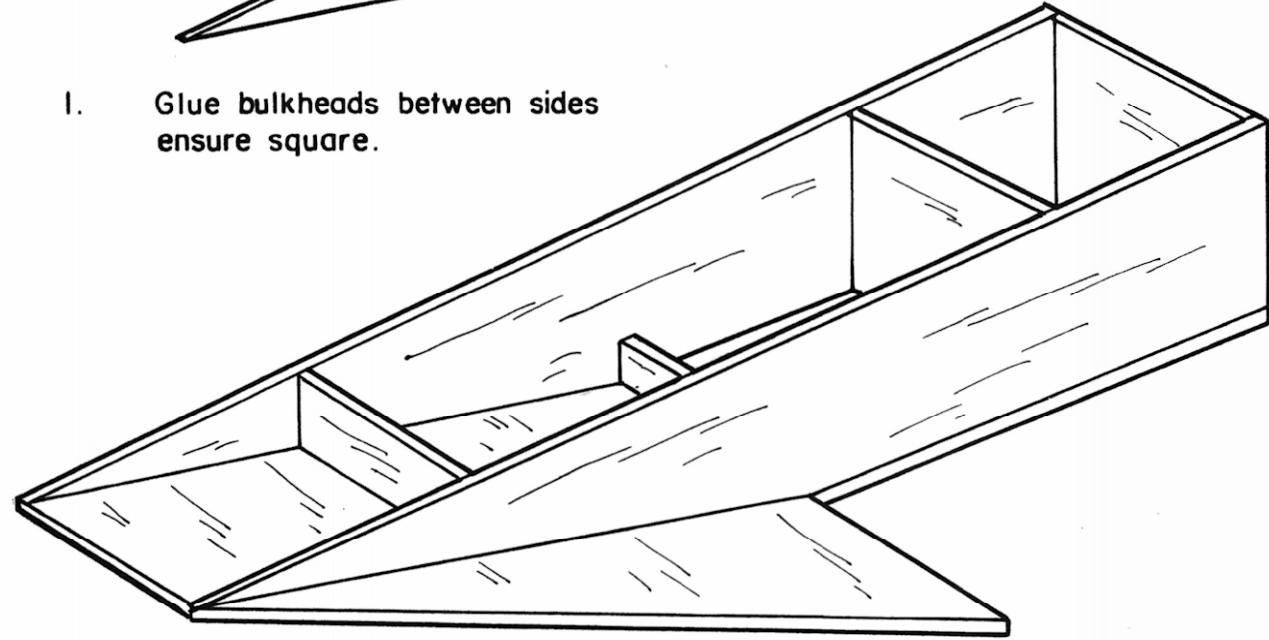
S3b - 2 req.

Hull sides - 2 req.

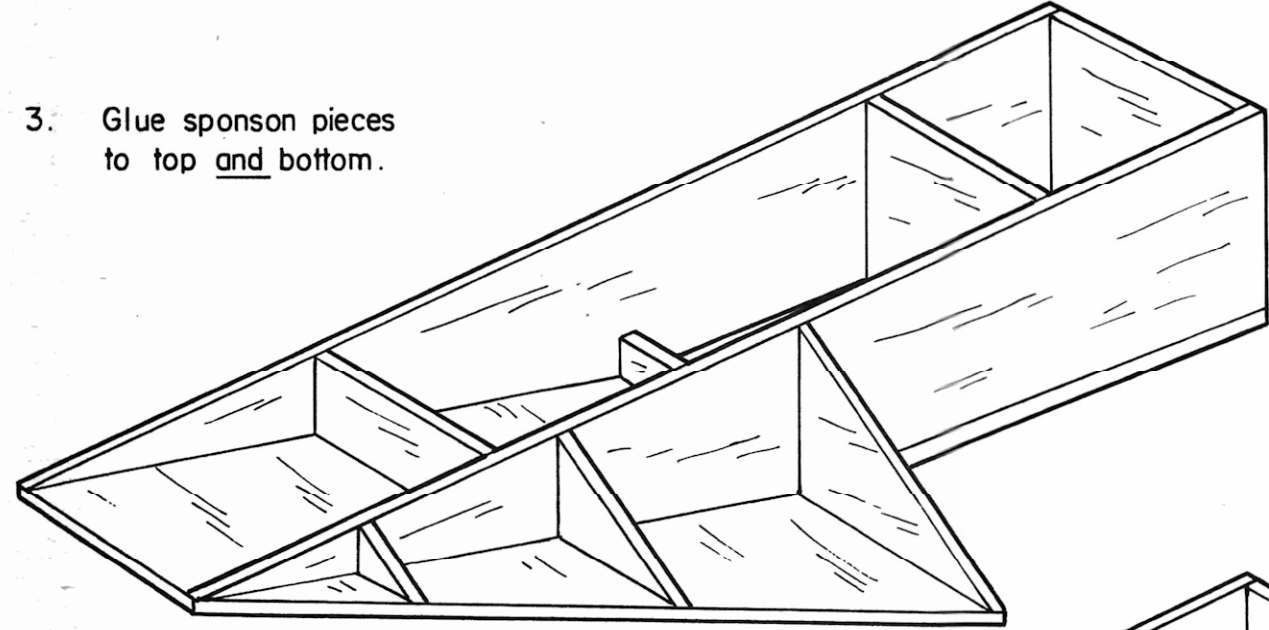
Hull Construction Sequence



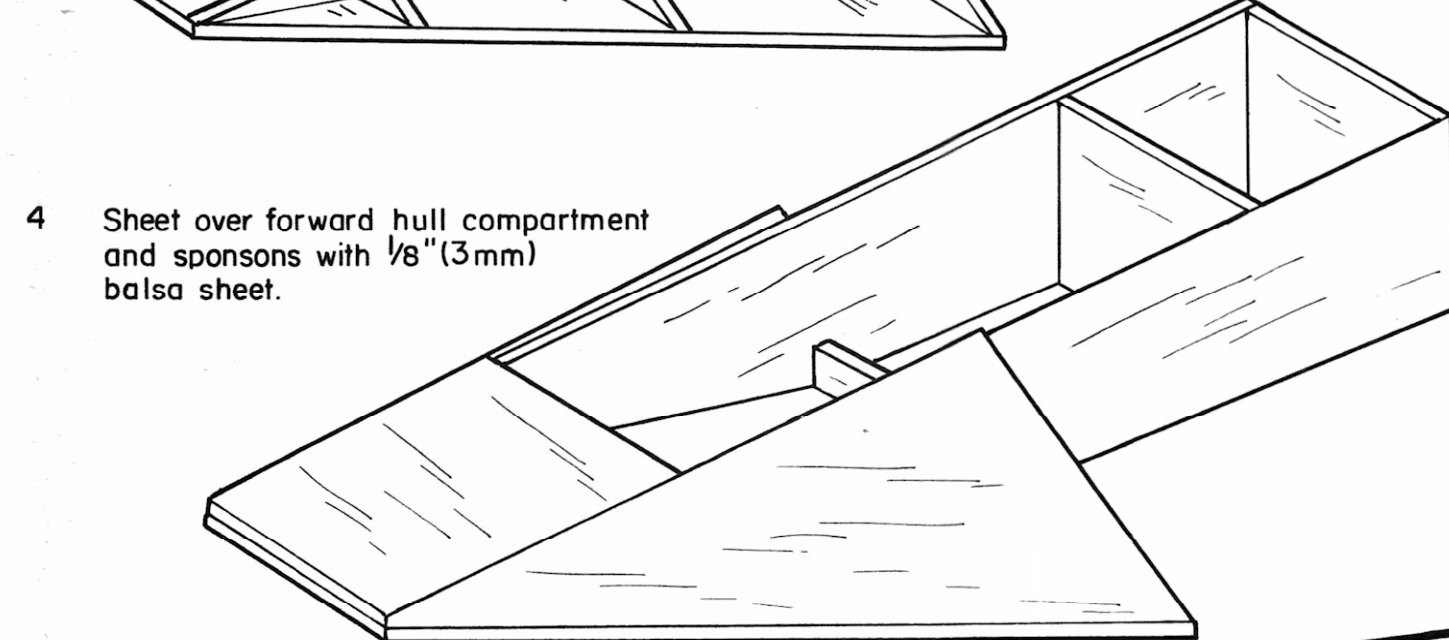
1. Glue bulkheads between sides ensure square.



2. Add hull bottom sheeting from 1/8" (3mm) balsa.



3. Glue sponson pieces to top and bottom.



4. Sheet over forward hull compartment and sponsons with 1/8" (3mm) balsa sheet.

