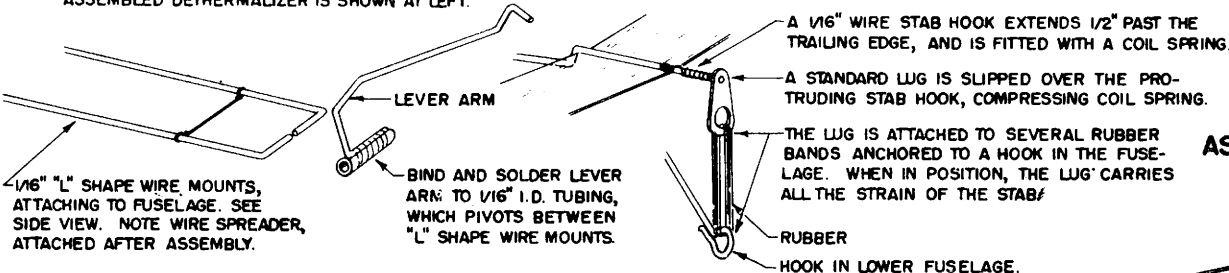
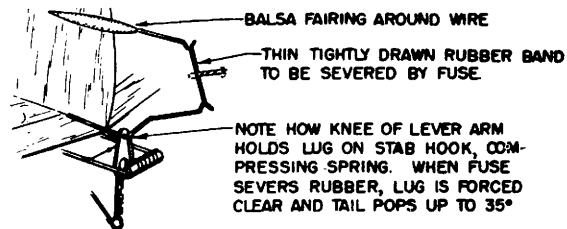


DETHERMALIZER COMPONENTS

THIS DETHERMALIZER IS ACTUATED BY A FUSE (CORD SOAKED IN 3 PARTS OF WATER TO 1 PART OF POTASSIUM NITRATE.

SHOWN BELOW ARE THE VARIOUS FITTINGS REQUIRED. ASSEMBLED DETHERMALIZER IS SHOWN AT LEFT.

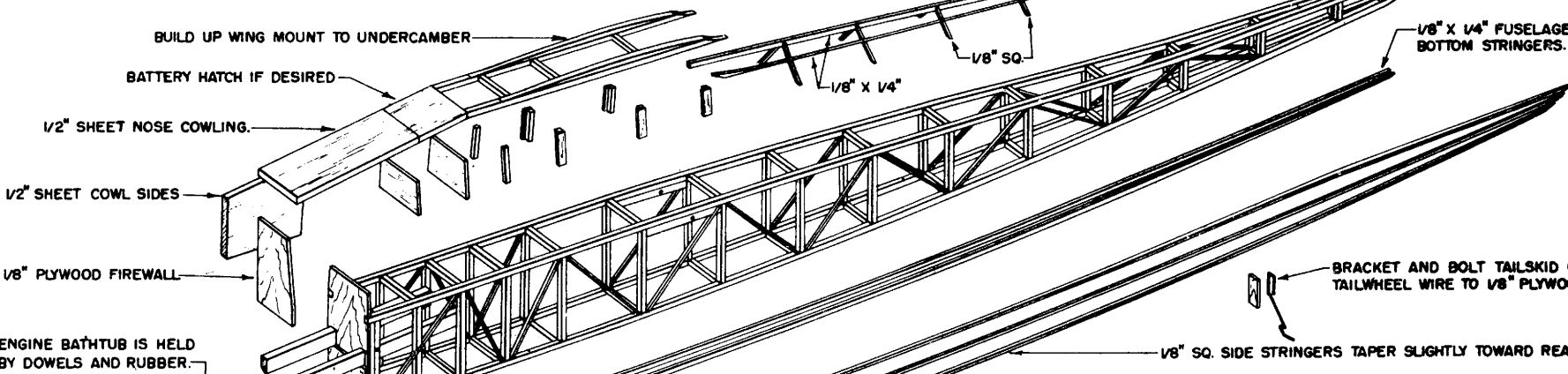


ASSEMBLED DETHERMALIZER

USE RUBBER TENSION FROM TOP OF FUSELAGE TO RUDDER TO RAISE TAIL TO 33° HOLD WITH CORD.

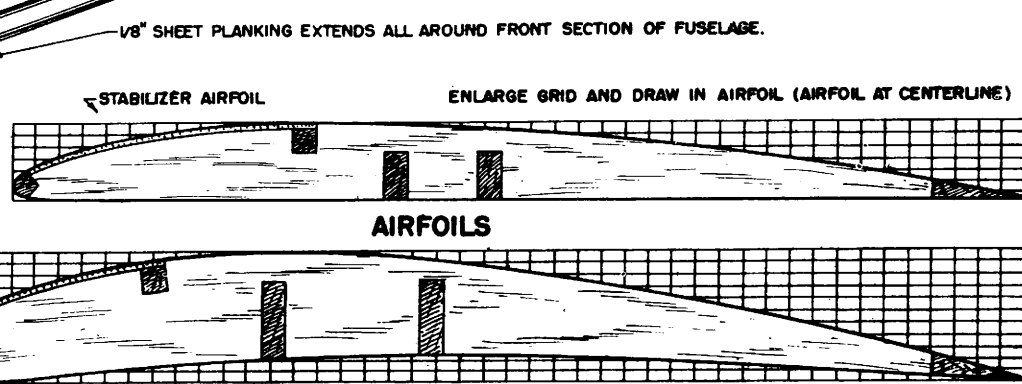
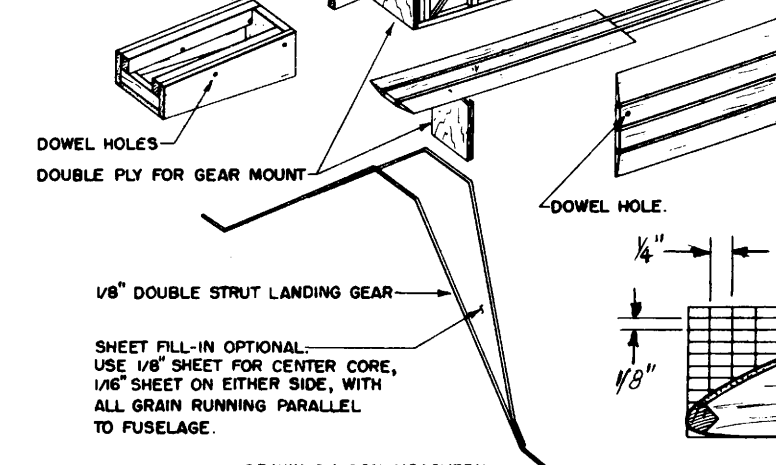
1/16" "L" SHAPE WIRE MOUNTS, ATTACHING TO FUSELAGE. SEE SIDE VIEW. NOTE WIRE SPREADER, ATTACHED AFTER ASSEMBLY.

BIND AND SOLDER LEVER ARM TO 1/16" I.D. TUBING, WHICH PIVOTS BETWEEN "L" SHAPE WIRE MOUNTS.



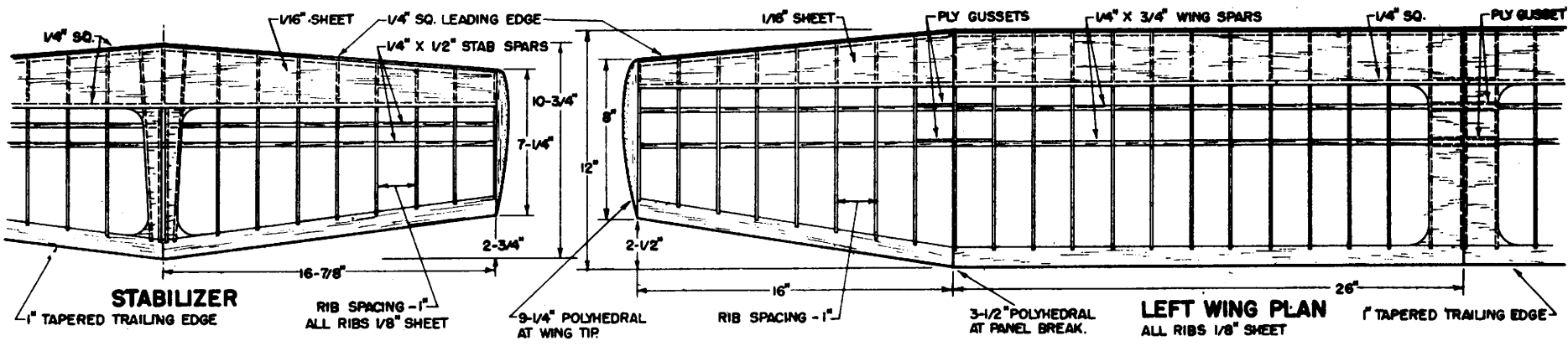
EXPLODED FUSELAGE

FROSTBITE

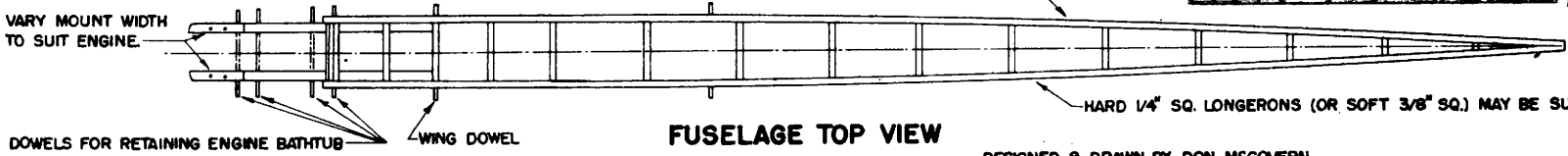
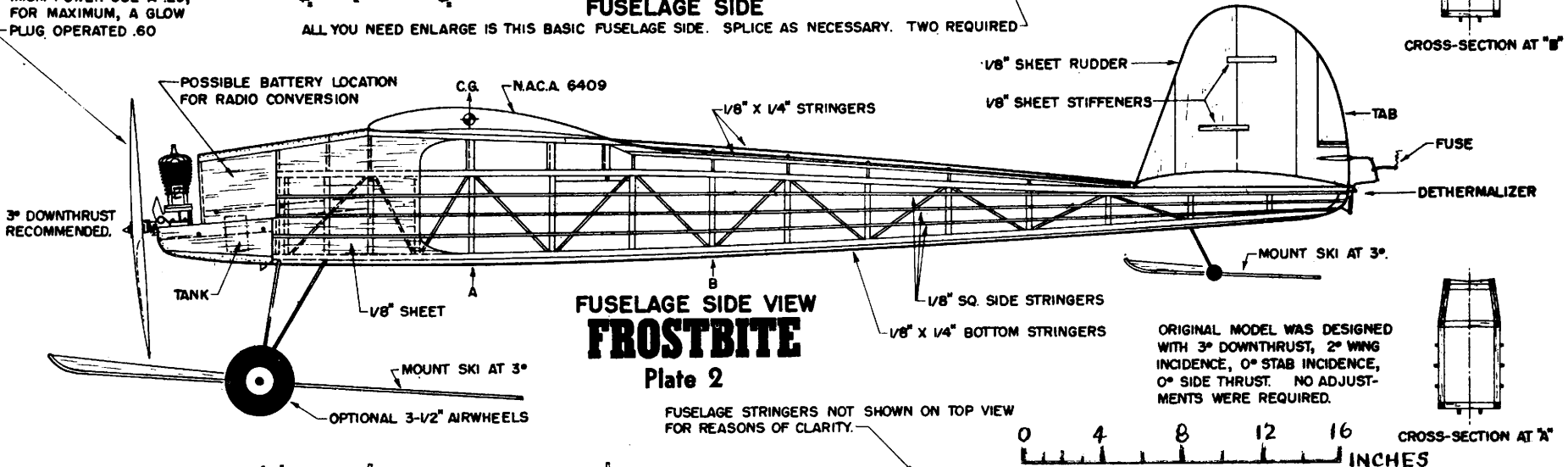
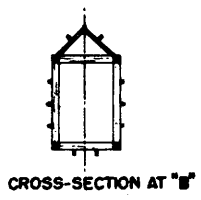
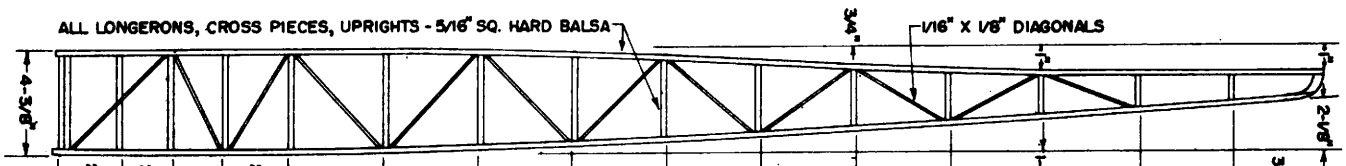


SHEET FILL-IN OPTIONAL. USE 1/8" SHEET FOR CENTER CORE, 1/16" SHEET ON EITHER SIDE, WITH ALL GRAIN RUNNING PARALLEL TO FUSELAGE.

WING AIRFOIL (N.A.C.A. 6409)



CHOOSE YOUR POWERPLANT FOR THE TYPE OF FLYING YOU DESIRE. FOR MINIMUM POWER USE A 29, FOR MAXIMUM, A GLOW PLUG OPERATED .60



DESIGNED & DRAWN BY: DON MCGOVERN