

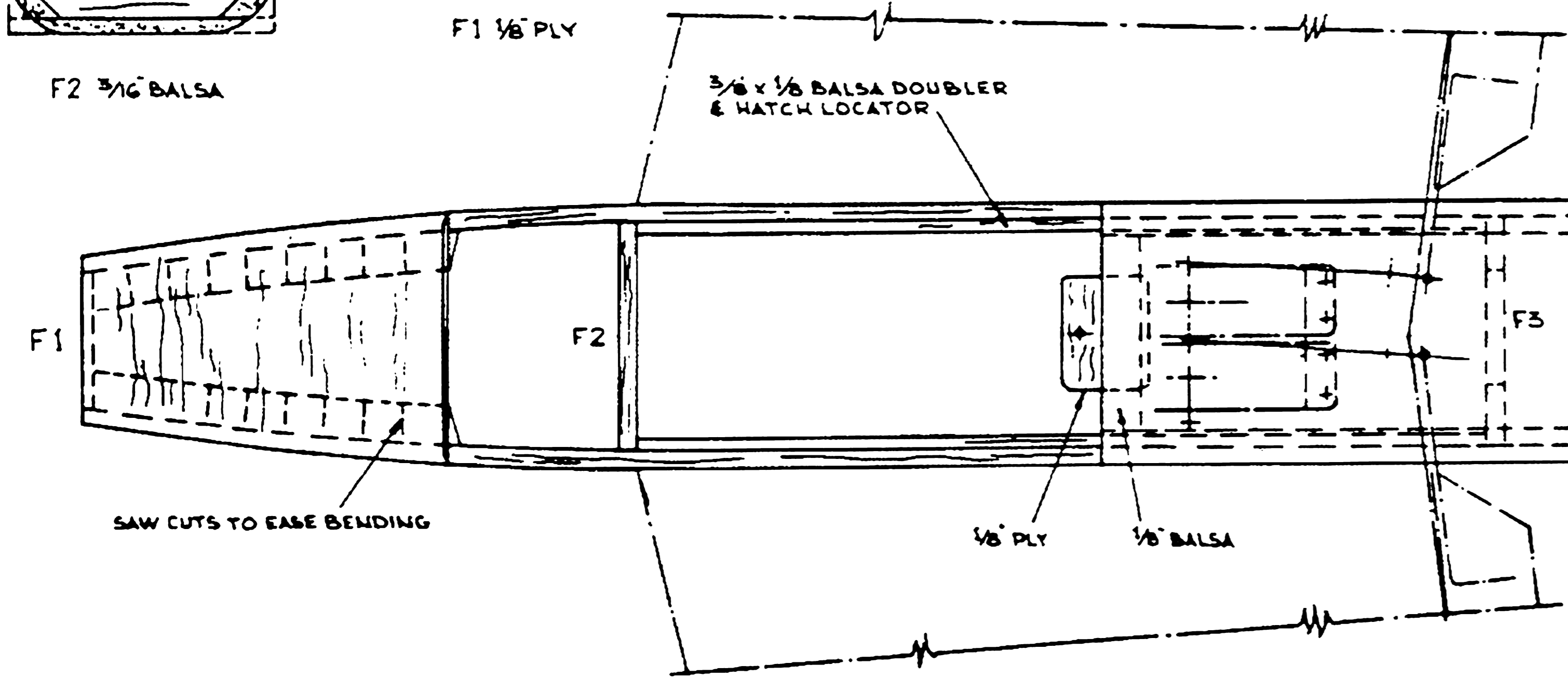
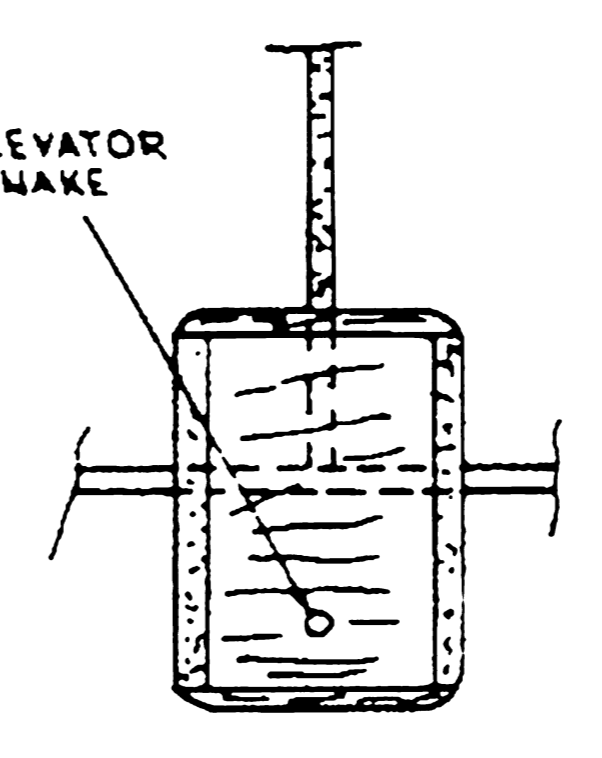
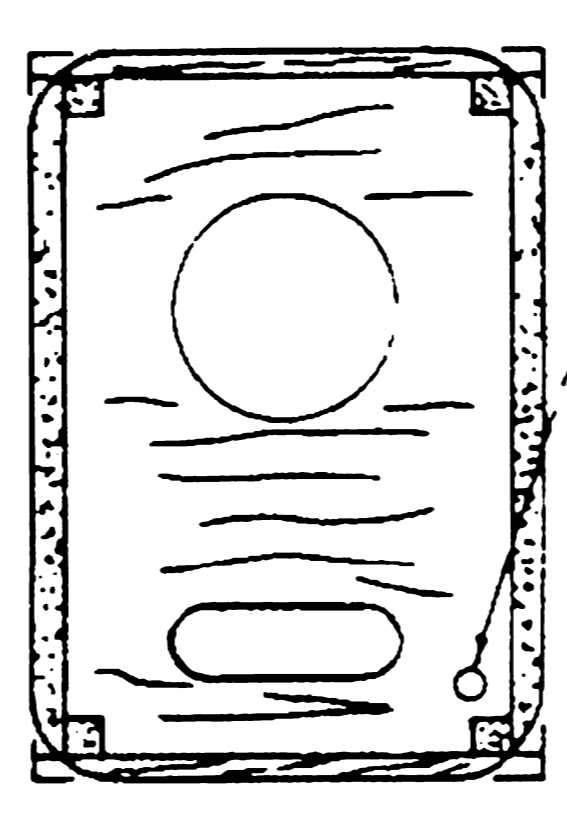
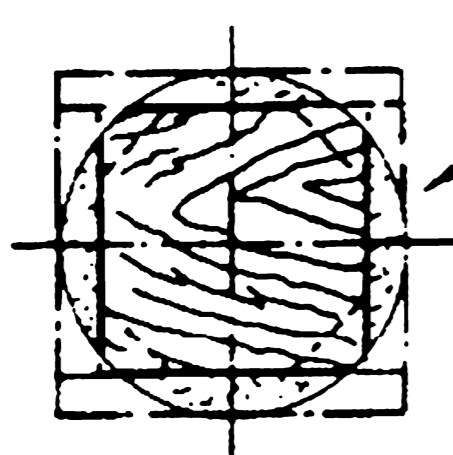
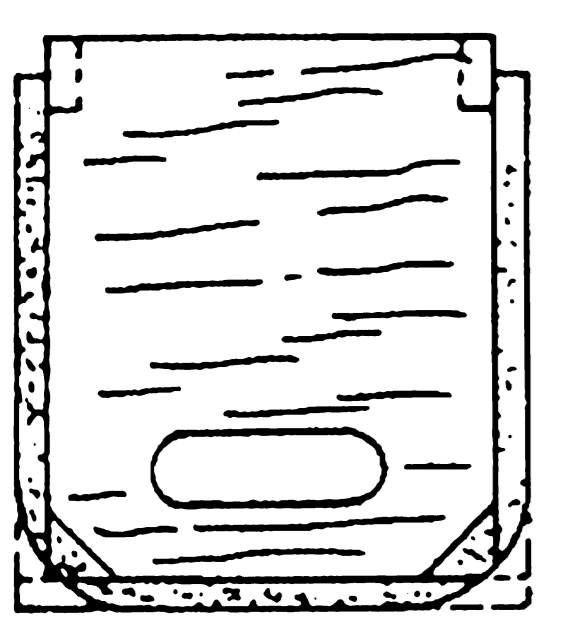
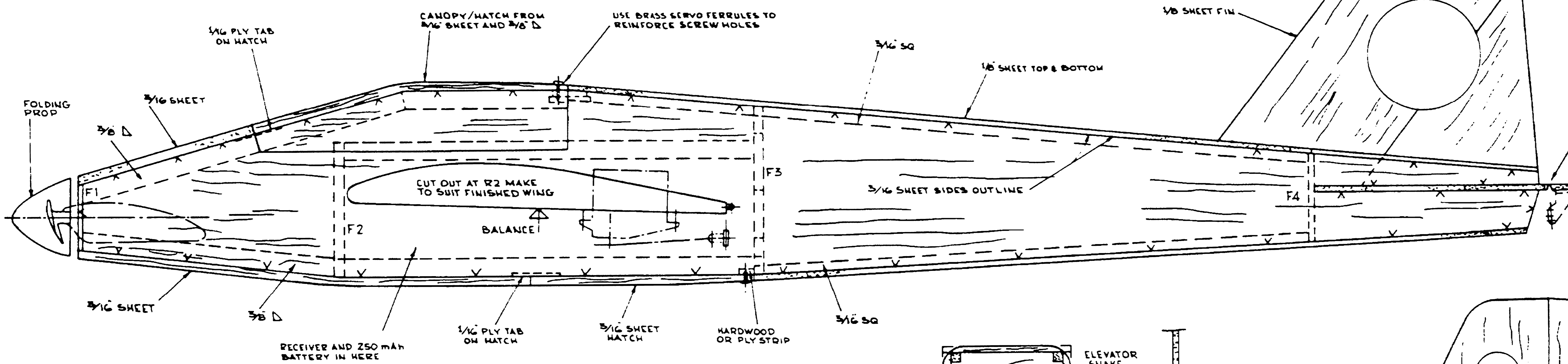
(COVER AND HULL ELEVATOR BEFORE FITTING TO FUSELAGE. LEAVE AREAS TO BE GLUED UNCOVERED)

1 LAY ELEVATOR UPSIDE DOWN ON TAILPLANE (2004 OR FILM STRIP)

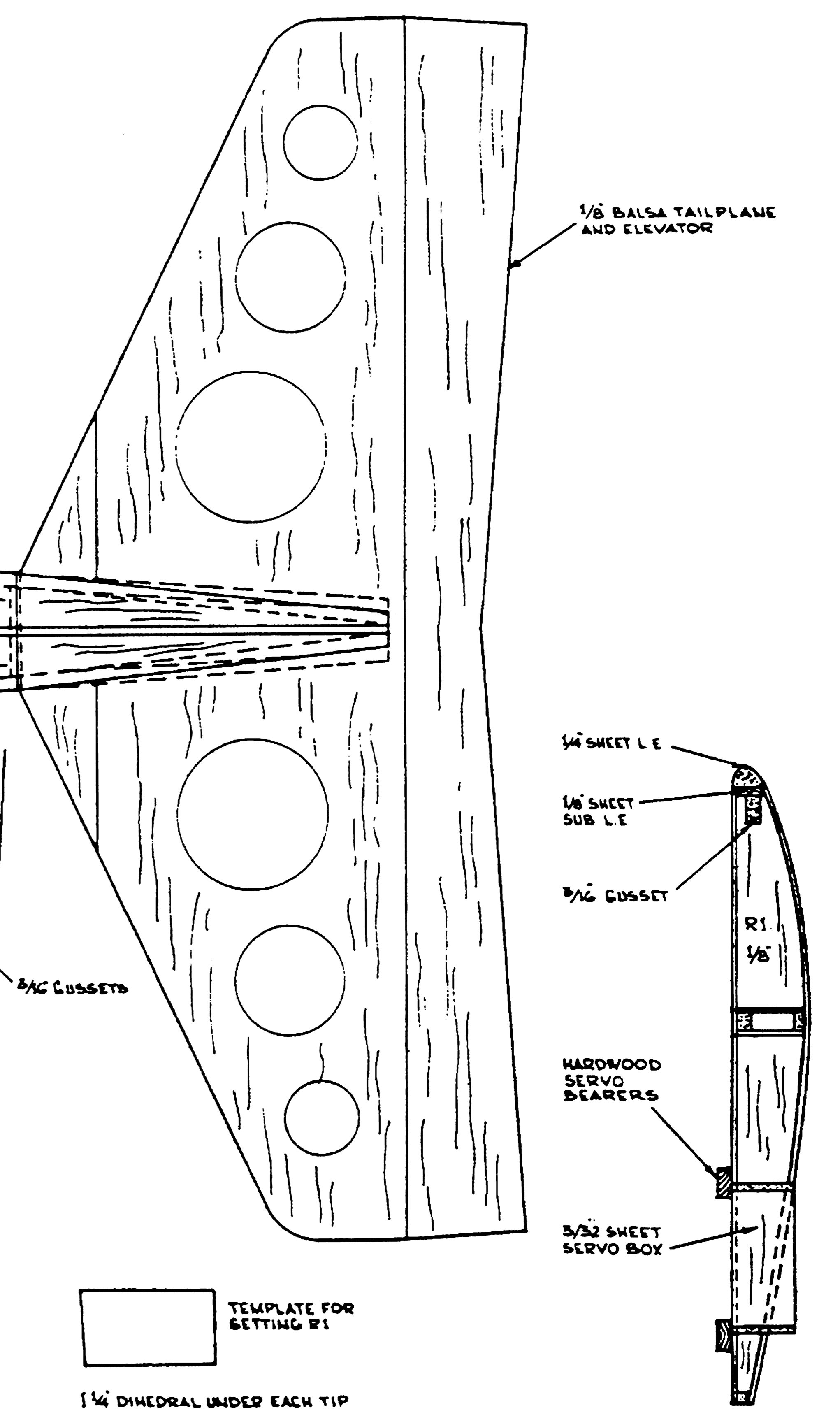
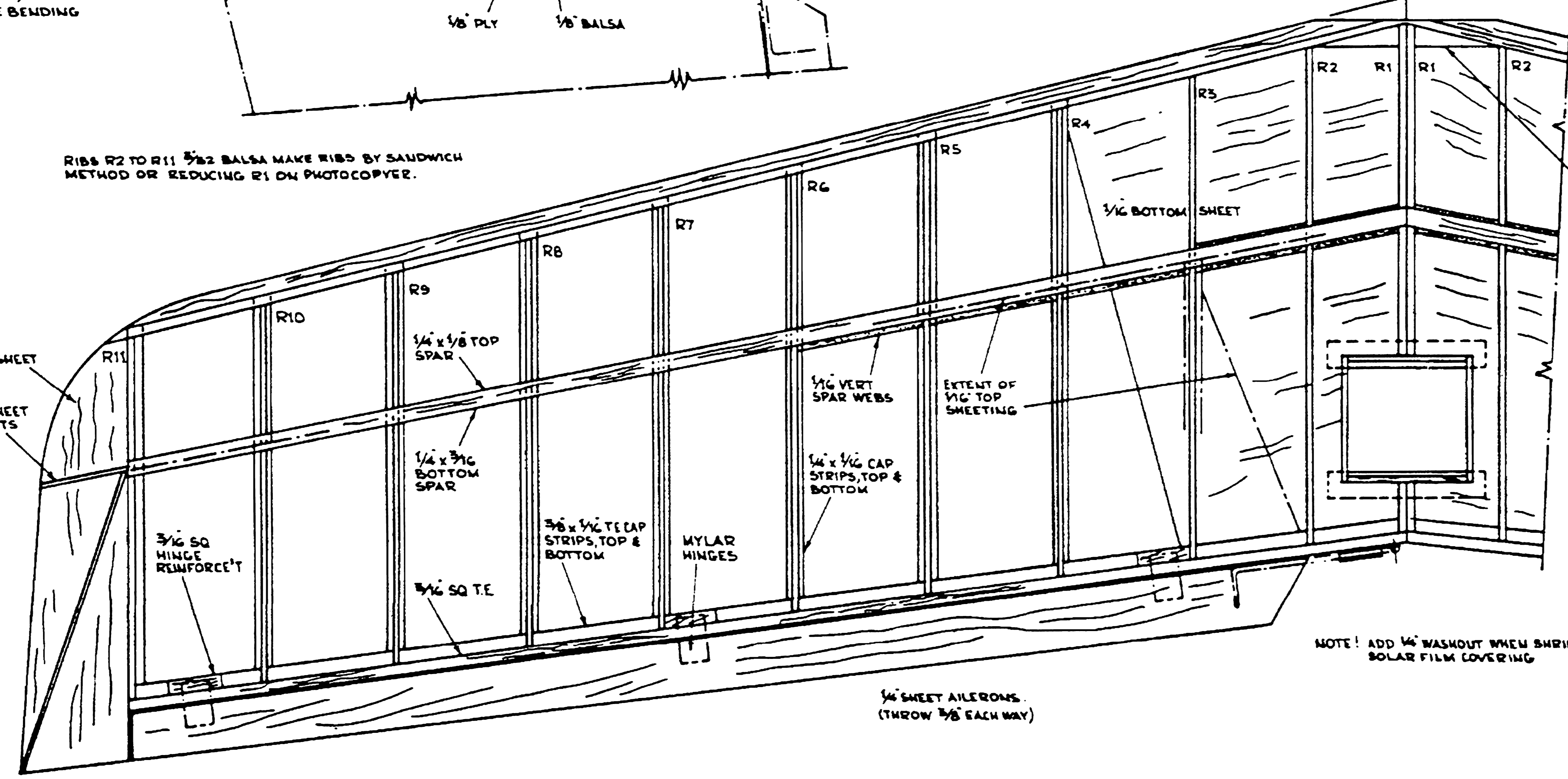
2 IRON ON SECOND STRIP OF FILM ON TOP

HINGE AT TOP WITH SOLAR FILM AS ABOVE OR USE THIN MYLAR HINGES THOS.

3/8" UP & DOWN (AT CENTRE)



RIBS R2 TO R11 3/32 Balsa MAKE RIBS BY SANDWICH METHOD OR REDUCING R1 ON PHOTOCOPIER.



NOTE! ALL Balsa MEDIUM WEIGHT

NOTE! ADD 1/4" WASHOUT WHEN SHRINKING SOLAR FILM COVERING

