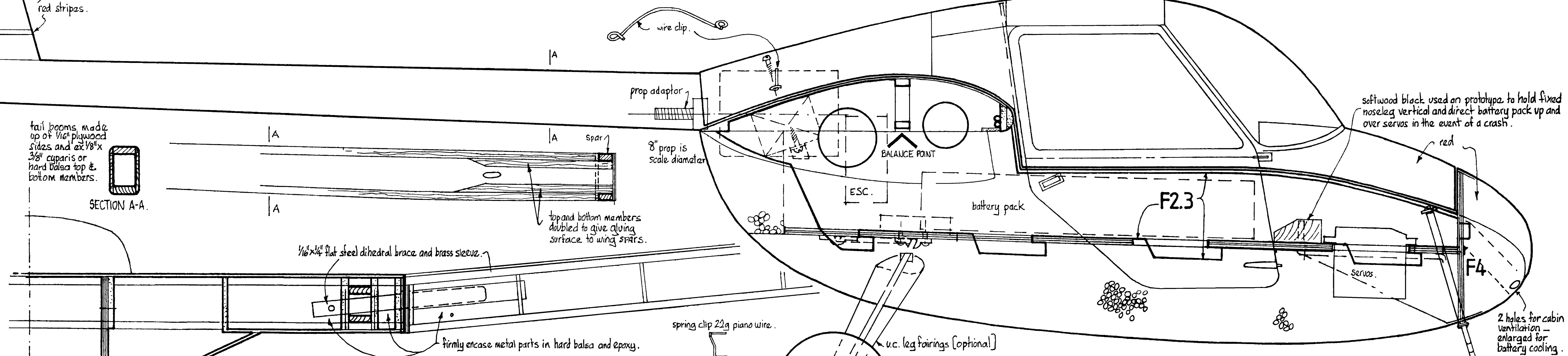
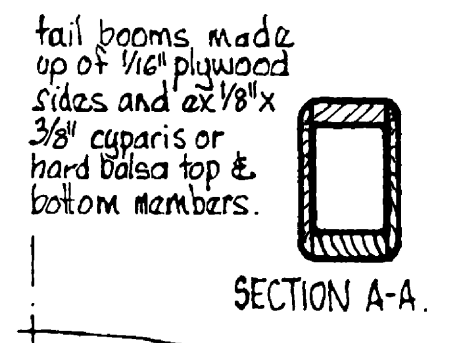
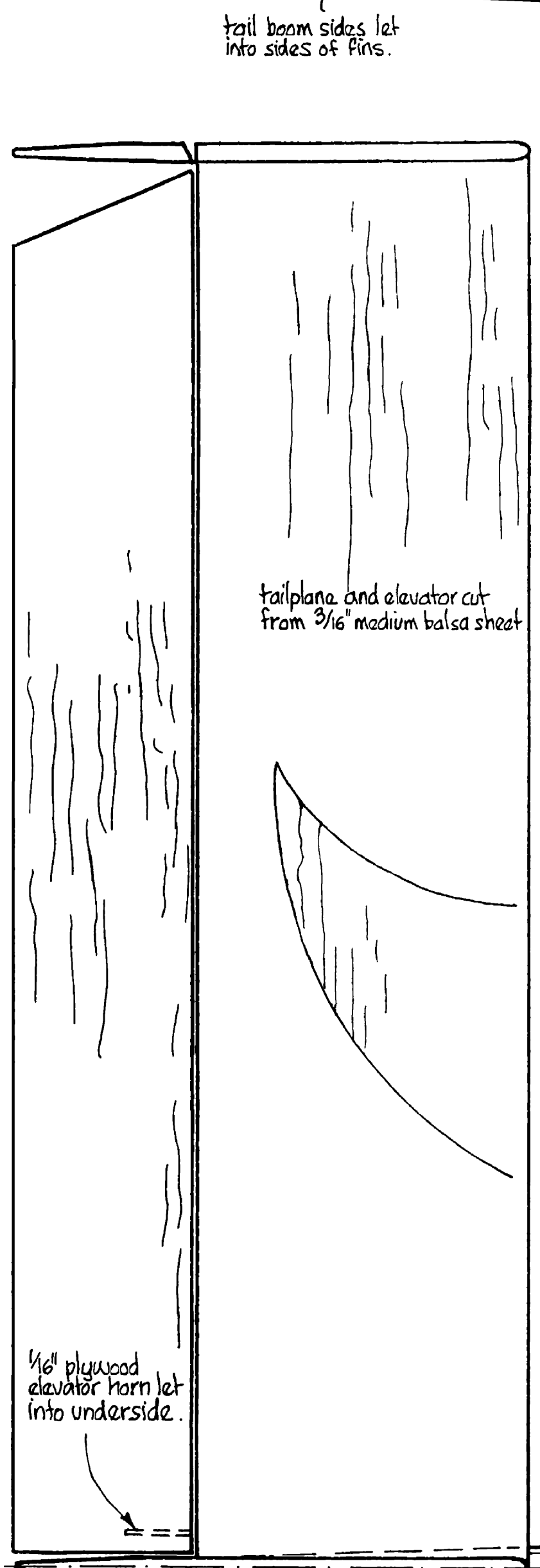
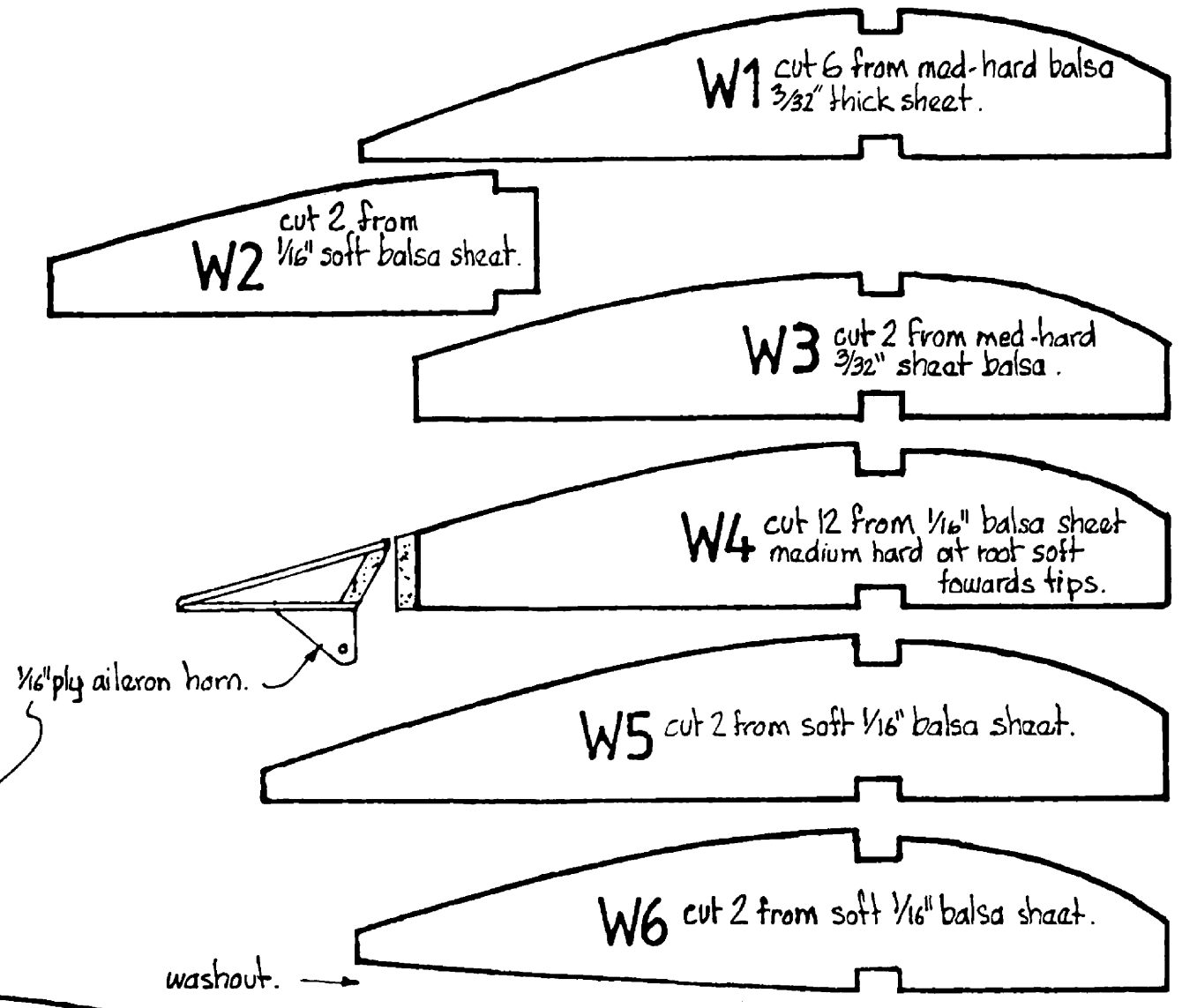
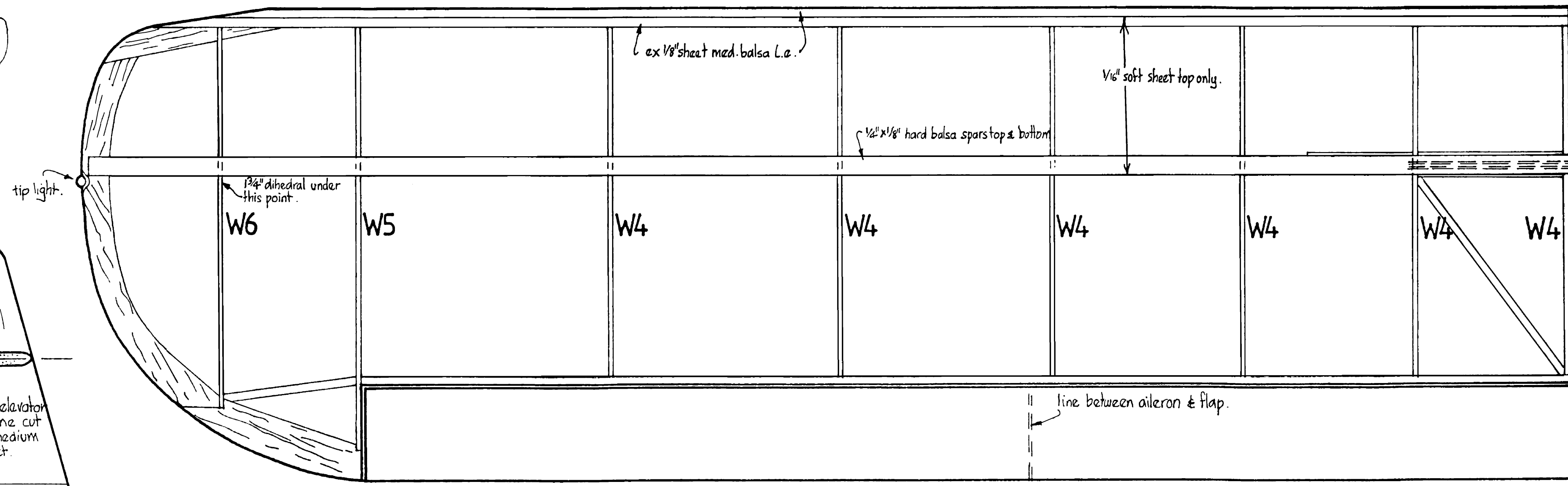
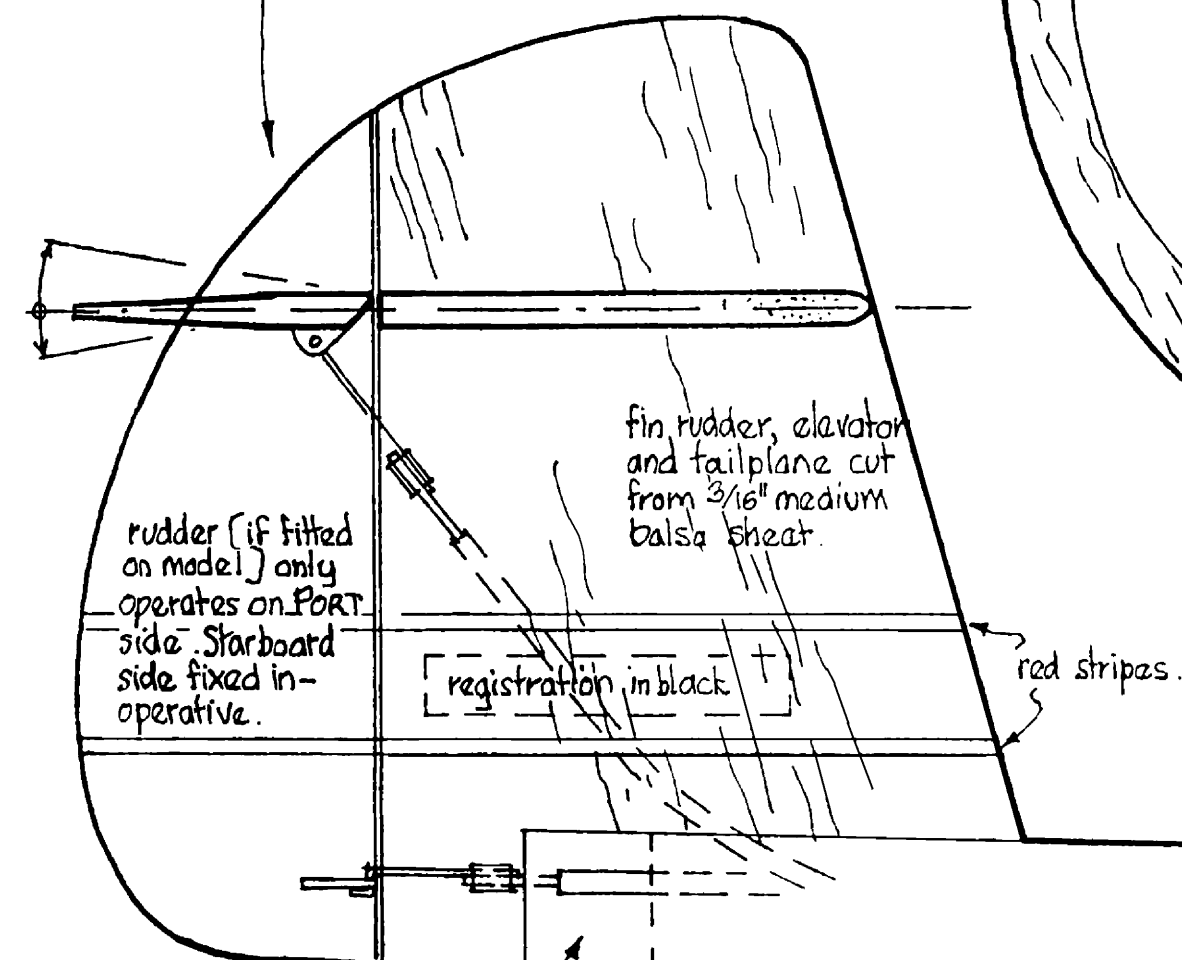


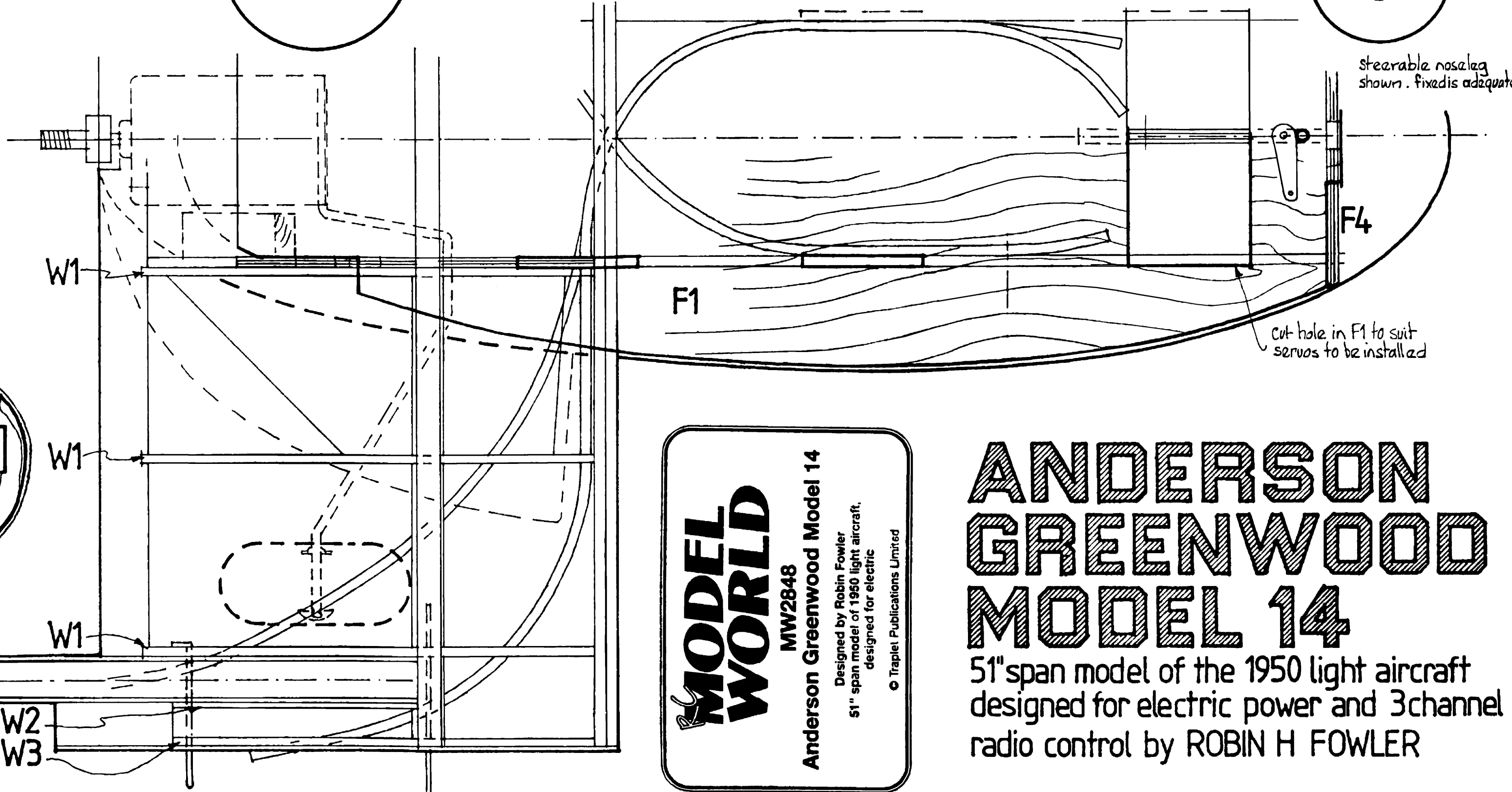
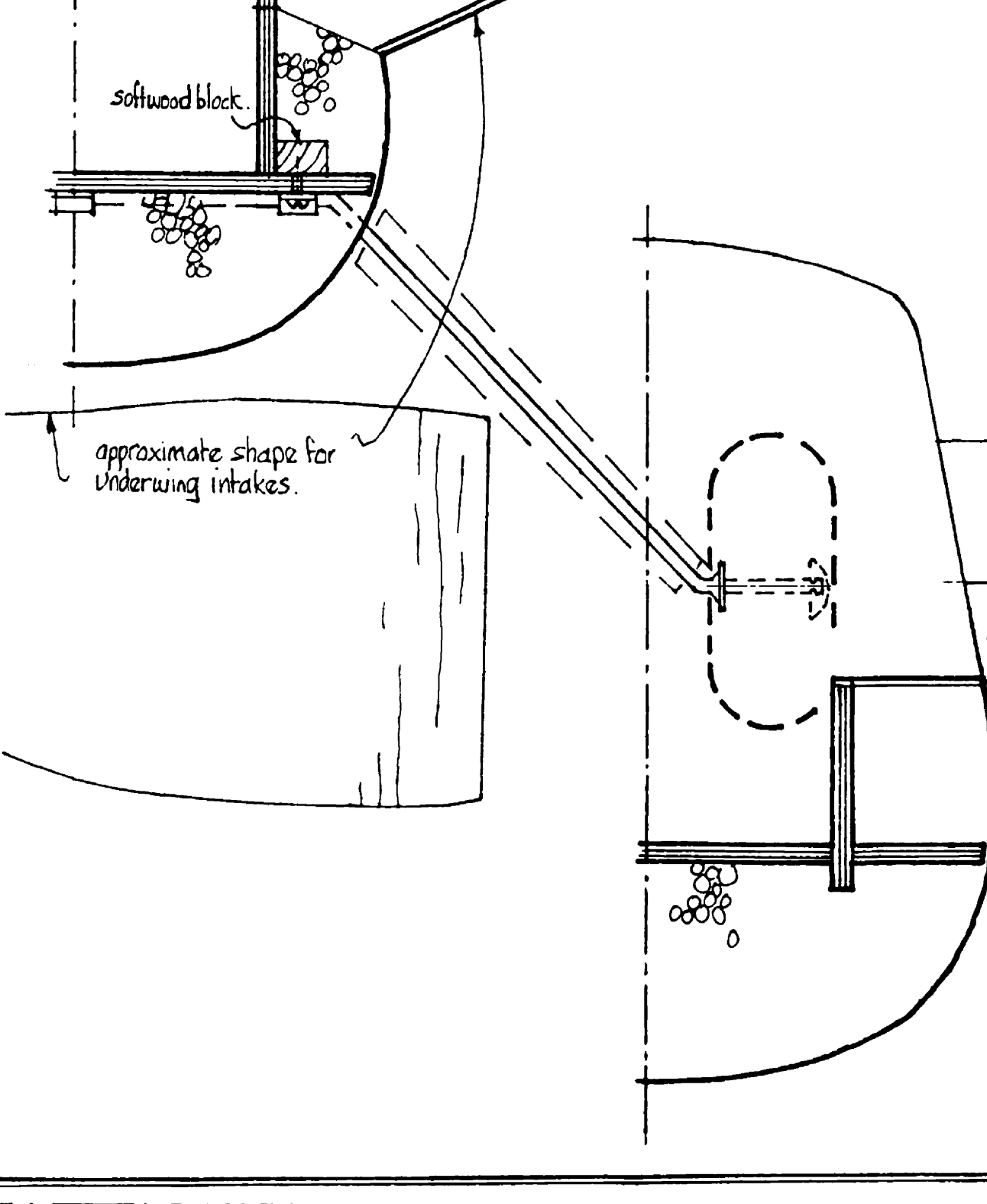
**N3900K**

Registration on top of starboard wing and underneath port wing. 2 1/2" high on this model. Also 3/16" high on fins. All registrations black on aluminium.

\* elevator operating system shown here but is fitted on inboard side of starboard fin.



- MATERIALS USED.**
- 3/16" balsa sheet. 1 sheet medium 4"
  - 1/4" x 1/8" balsa strip. 2 lengths hard, approx. 21" x 10"
  - 1/8" litaply.
  - 1/16" med balsa sheet. 2 sheets
  - 1/16" soft balsa sheet. 1 sheet 4"
  - 3/32" med hard balsa. 1 sheet 3"
  - 1/2" e.a. stock. 2 lengths
  - 1/8" med. balsa sheet. 1 sheet 3"
  - Cyparis (or spruce) strip. 2 lengths 1/8" x 1/2", 1 length 1/8" x 1/4"



**MODEL WORLD**  
 MW2848  
 Anderson Greenwood Model 14  
 Designed by Robin Fowler  
 51" span model of 1950 light aircraft.  
 designed for electric power.  
 © Triplet Publications Limited

**ANDERSON GREENWOOD MODEL 14**  
 51" span model of the 1950 light aircraft designed for electric power and 3 channel radio control by ROBIN H FOWLER