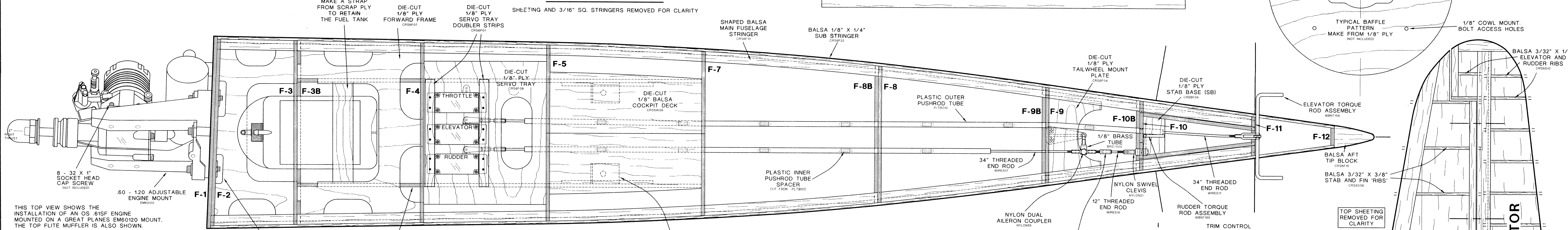


FWD DECK SHEETING PATTERN  
CUT FROM CRS6F25

AFT DECK SHEETING PATTERN  
CUT FROM CRS6F18

BELLY-PAN SHEETING PATTERN  
CUT FROM CRS6F24

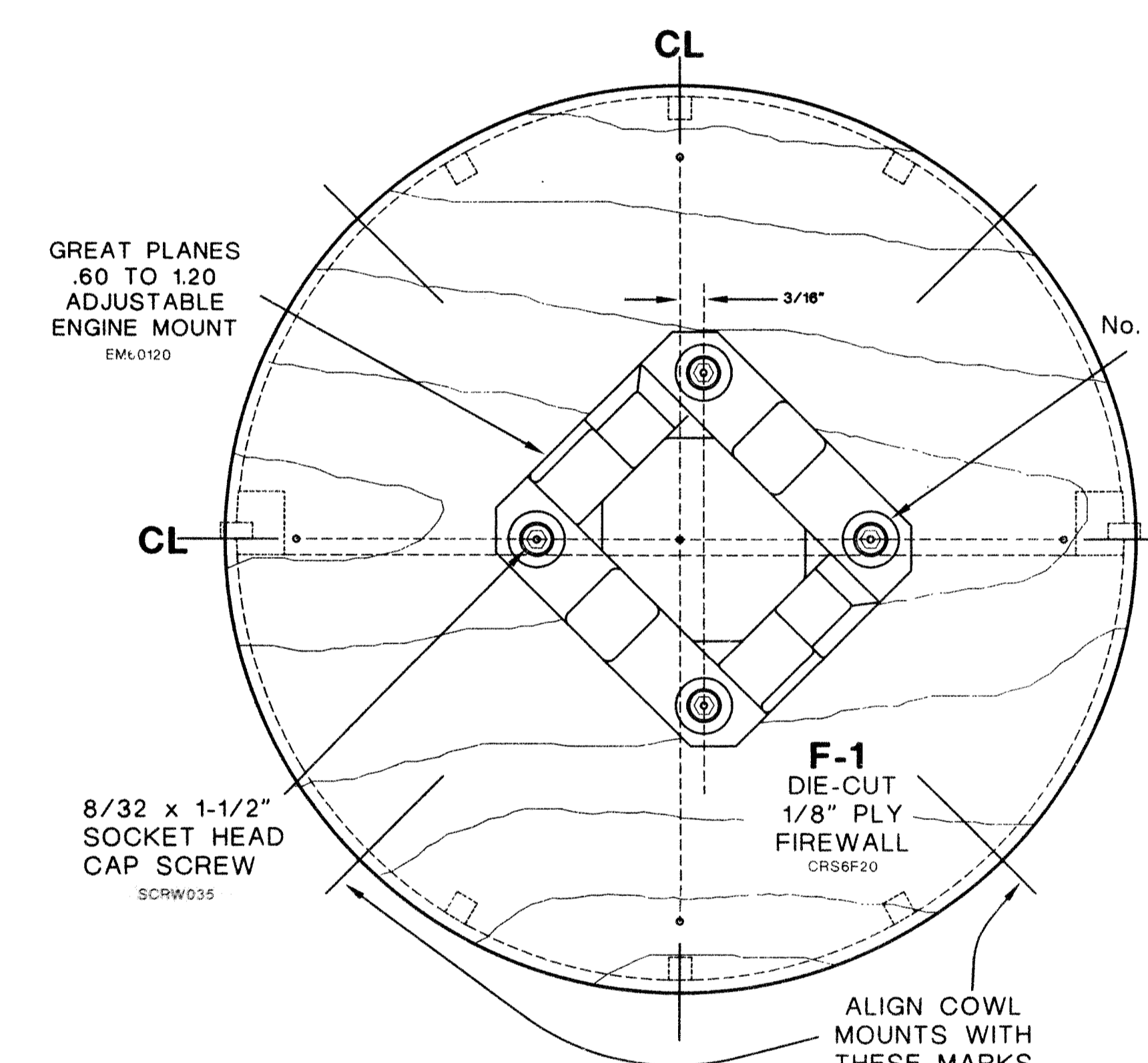
### FUSE TOP VIEW



THIS TOP VIEW SHOWS THE INSTALLATION OF AN OS .61SF ENGINE MOUNTED ON A GREAT PLANES EM60120 MOUNT. THE TOP FLITE MUFFLER IS ALSO SHOWN.

TRIM THE NOTCHES IN THE FORWARD CRUTCH AS NEEDED.

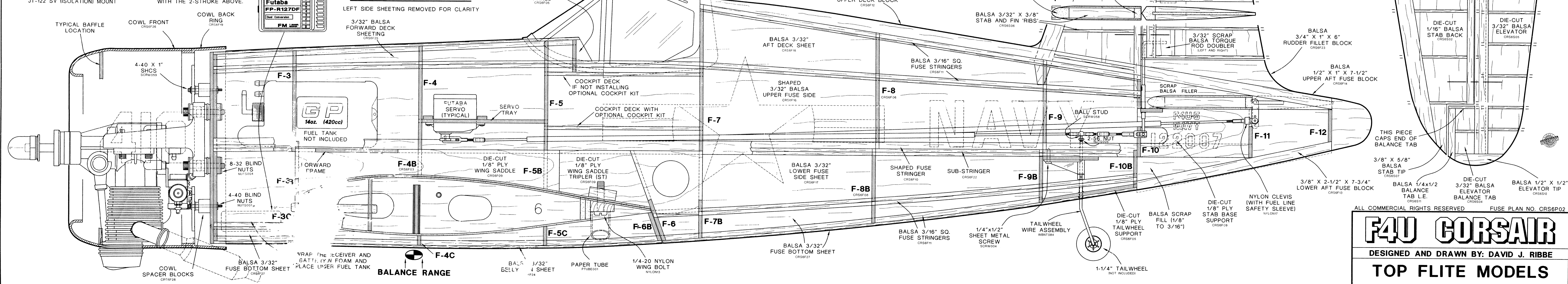
TOP SHEETING REMOVED FOR CLARITY



THIS SIDE VIEW SHOWS THE INSTALLATION OF AN INVERTED AND SOFT MOUNTED OS 120 4-STROKE. IT IS MOUNTED ON A J-TEC NO. JT-122 SV (ISOLATION) MOUNT

4-STROKE ENGINES MAY BE MOUNTED WITH THE HEAD TOWARD THE RIGHT SIDE OF THE MODEL, OR AT A 45° ANGLE AS SHOWN WITH THE 2-STROKE ABOVE.

### FUSE SIDE VIEW



LEFT SIDE SHEETING REMOVED FOR CLARITY

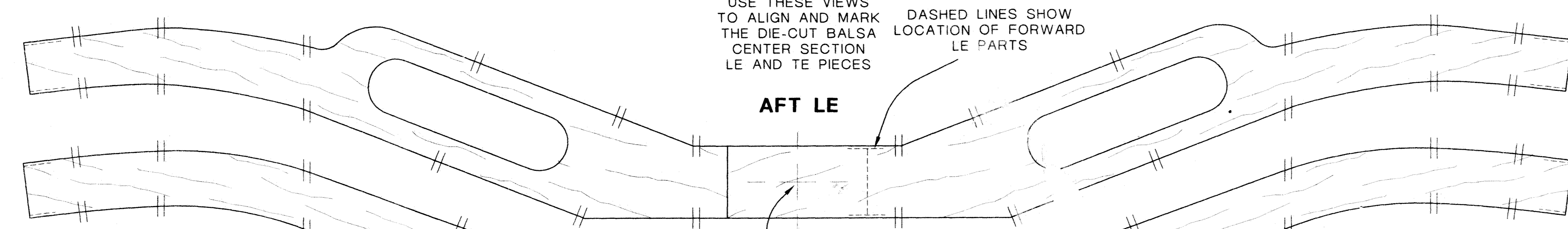
THIS PIECE CAPS END OF BALANCE TAB

ALL COMMERCIAL RIGHTS RESERVED FUSE PLAN NO. CRS6P02

**F4U CORSAIR**  
DESIGNED AND DRAWN BY: DAVID J. RIBBE  
**TOP FLITE MODELS**  
PO BOX 721 URBANA, IL 61801

GLUE THIS PATTERN TO A PIECE OF SCRAP WOOD AND CUT OUT TO AID IN LE SHAPING

USE THESE VIEWS TO ALIGN AND MARK THE DIE-CUT Balsa CENTER SECTION LE AND TE PIECES  
DASHED LINES SHOW LOCATION OF FORWARD LE PARTS

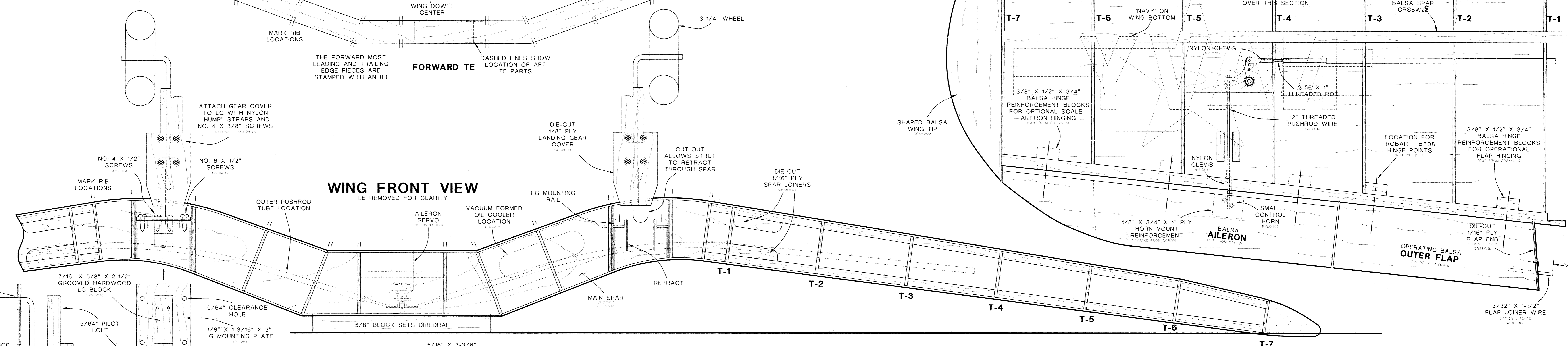


THE FORWARD MOST LEADING AND TRAILING EDGE PIECES ARE STAMPED WITH AN (F)

DASHED LINES SHOW LOCATION OF AFT TE PARTS

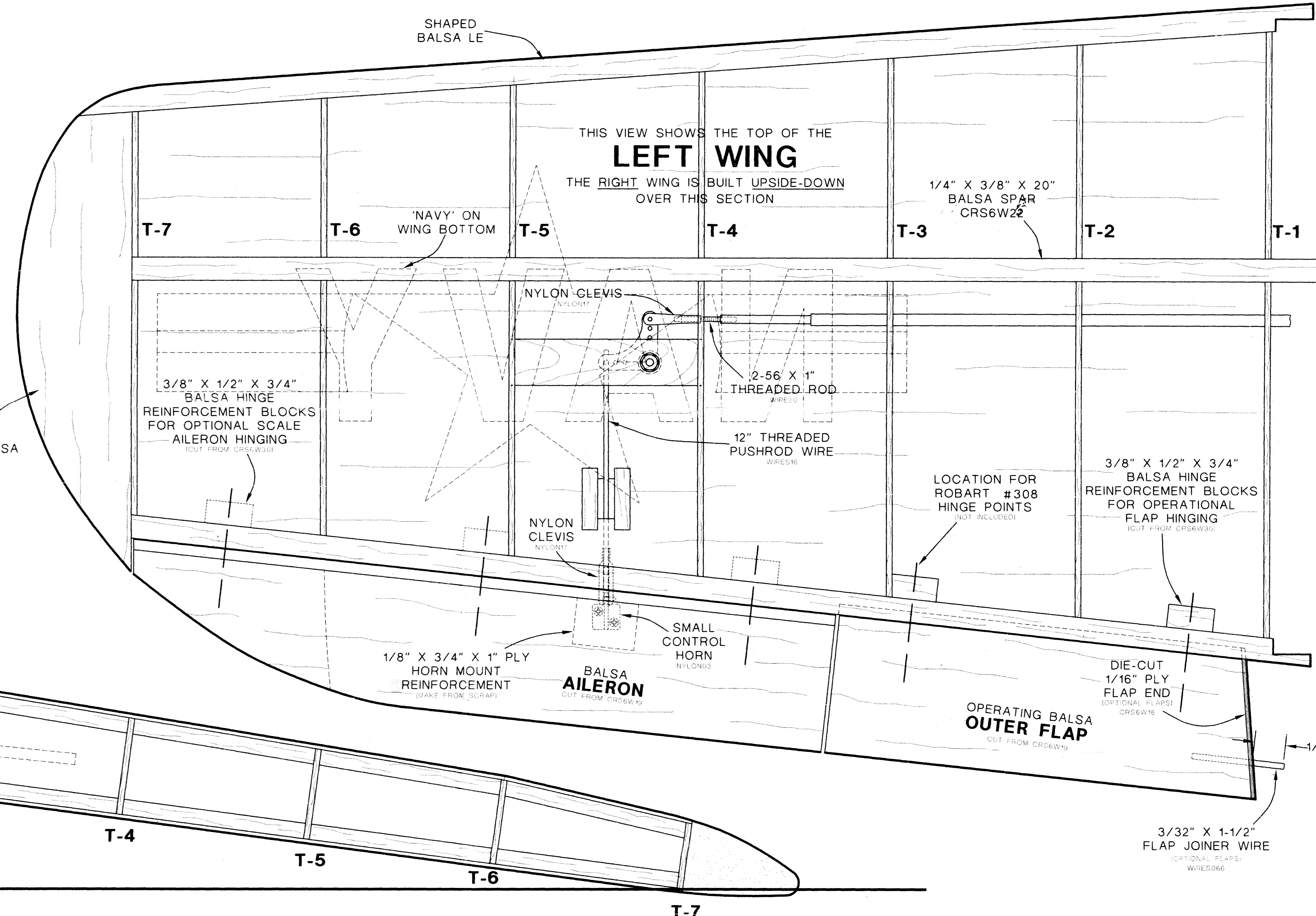
### WING FRONT VIEW

LE REMOVED FOR CLARITY



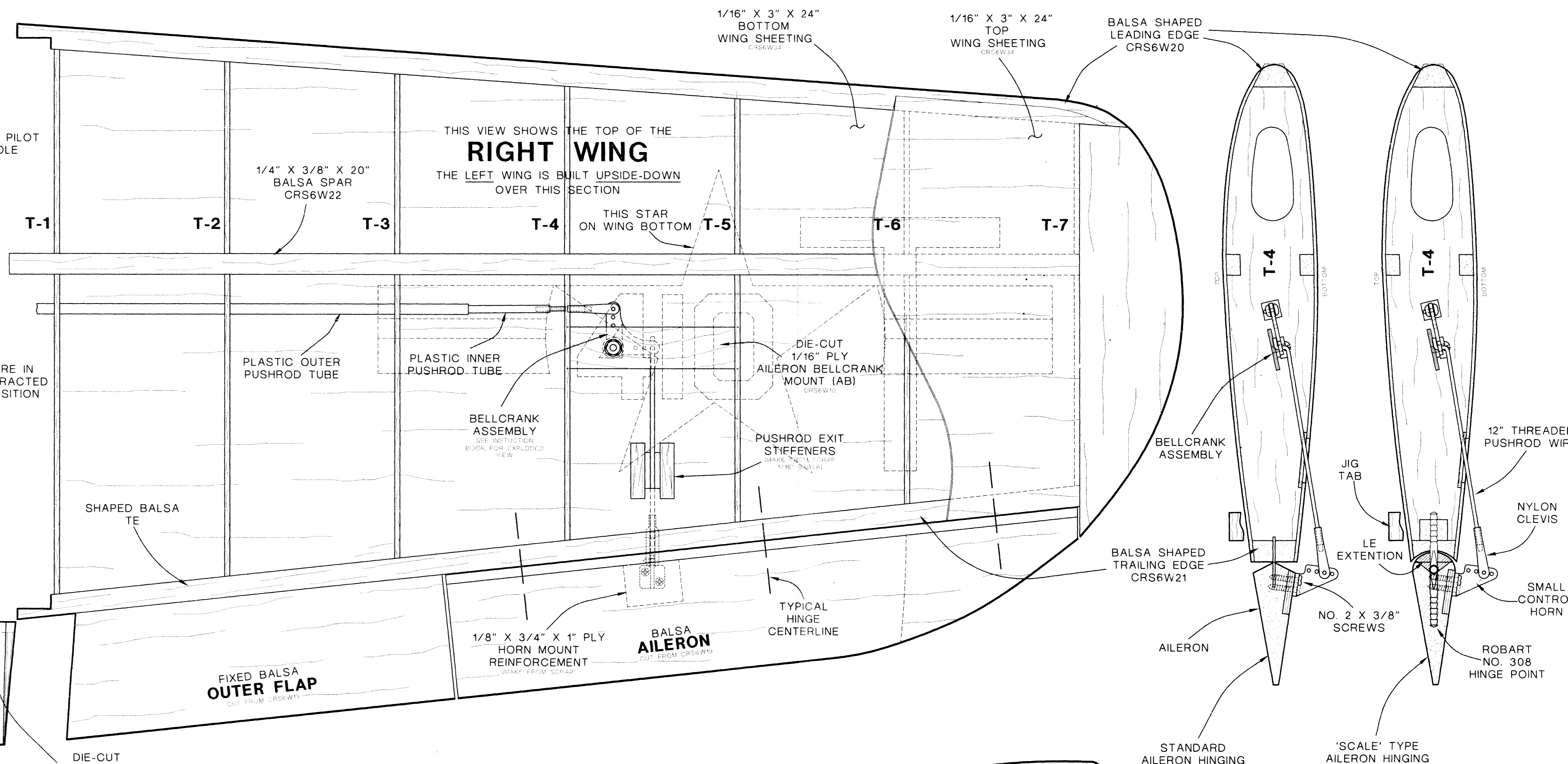
### LEFT WING

THIS VIEW SHOWS THE TOP OF THE LEFT WING THE RIGHT WING IS BUILT UPSIDE-DOWN OVER THIS SECTION



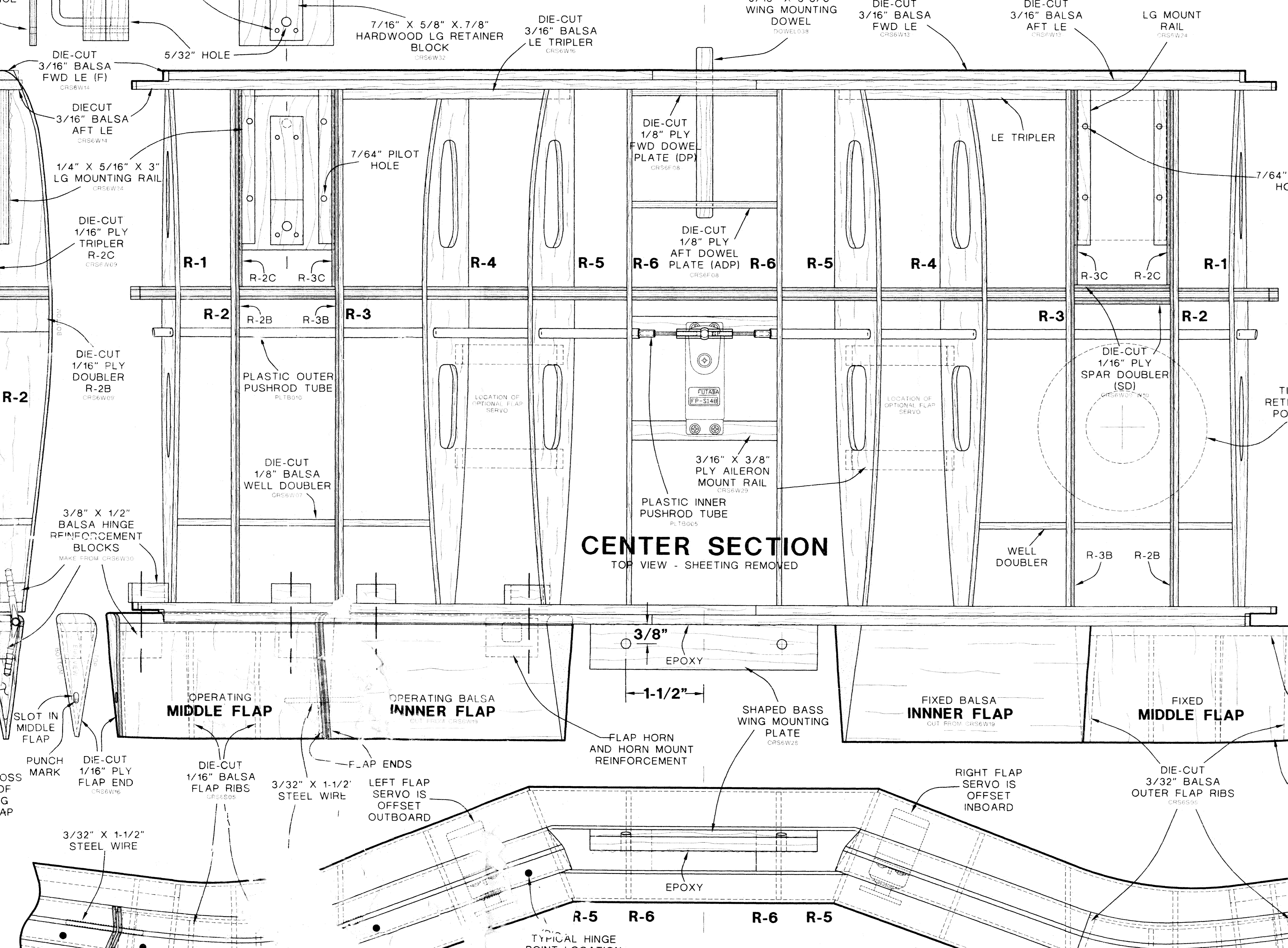
### RIGHT WING

THIS VIEW SHOWS THE TOP OF THE RIGHT WING THE LEFT WING IS BUILT UPSIDE-DOWN OVER THIS SECTION



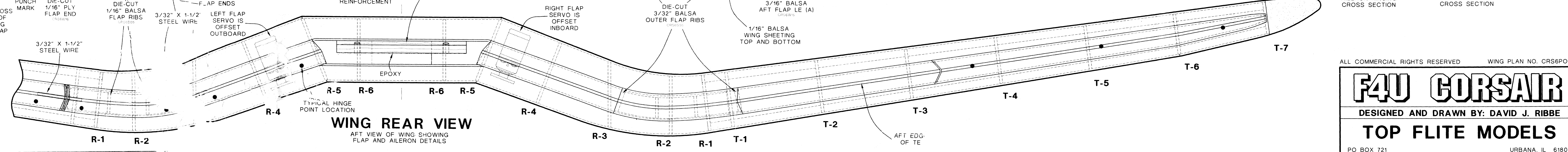
### CENTER SECTION

TOP VIEW - SHEETING REMOVED



### WING REAR VIEW

AFT VIEW OF WING SHOWING FLAP AND AILERON DETAILS



ALL COMMERCIAL RIGHTS RESERVED WING PLAN NO. CRS6PO1

# F4U CORSAIR

DESIGNED AND DRAWN BY: DAVID J. RIBBE

## TOP FLITE MODELS

PO BOX 721 URBANA, IL 61801