

12-6 SUPER M PROP (NOT FURNISHED)
 60 to 90 R/C ENGINE (NOT FURNISHED)
 #2 #4-40 x 3/4 R.H.M.S.
 #4-40 x 7/8 R.H.M.S. & #4-40 BLIND NUTS
 #2-56 x 3/8 R.H.M.S. & #2-56 HEX NUTS
 3 1/2 DIA WHEELS (NOT FURNISHED)

VACUUM FORMED GUN MOUNT TRIM AND FIT AS REQUIRED
 APPLY TO FUSELAGE WITH A CONTACT CEMENT SUCH AS
 WILHOLD SOLVENT BASE ADHESIVE WING STYRO STICK ETC
 INSTALL GUN MOUNT BEFORE THE CANOPY

VACUUM FORMED CANOPY TO BE INSTALLED AFTER THE
 GUN MOUNT TRIM AND FIT AS REQUIRED USE A
 CYANOACRYLATE FOR ADHESIVE

ANTENNA MAST MAKE FROM 3/16
 x 3/8 HARD Balsa OR 1/16
 LAMINATED PLYWOOD

1/4 THICK MAKE
 FROM ANY SCRAP

SECTION G-G

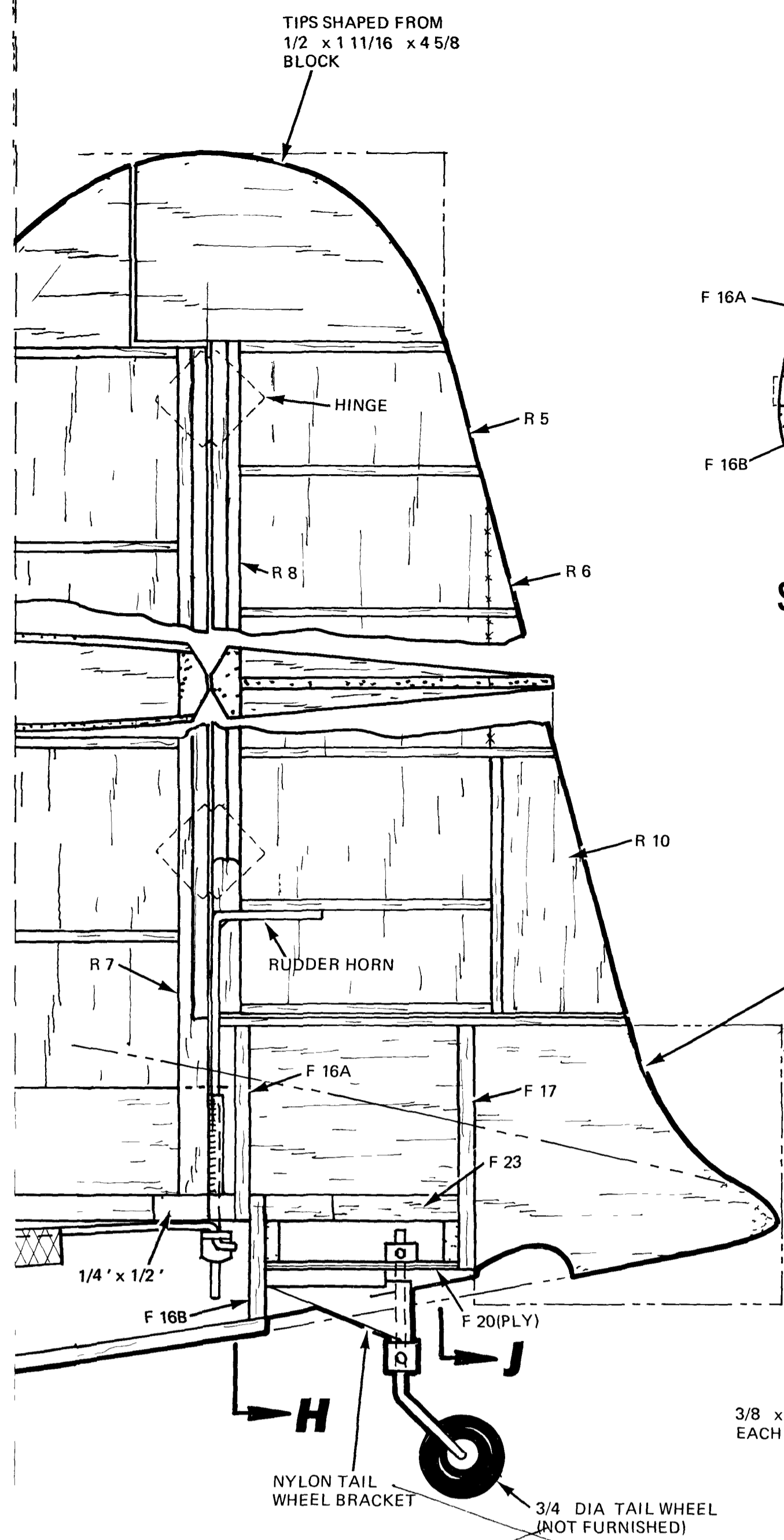
SECTION E-E

**SIDE VIEW
 SHOWN WITHOUT SHEETING FOR CLARITY**

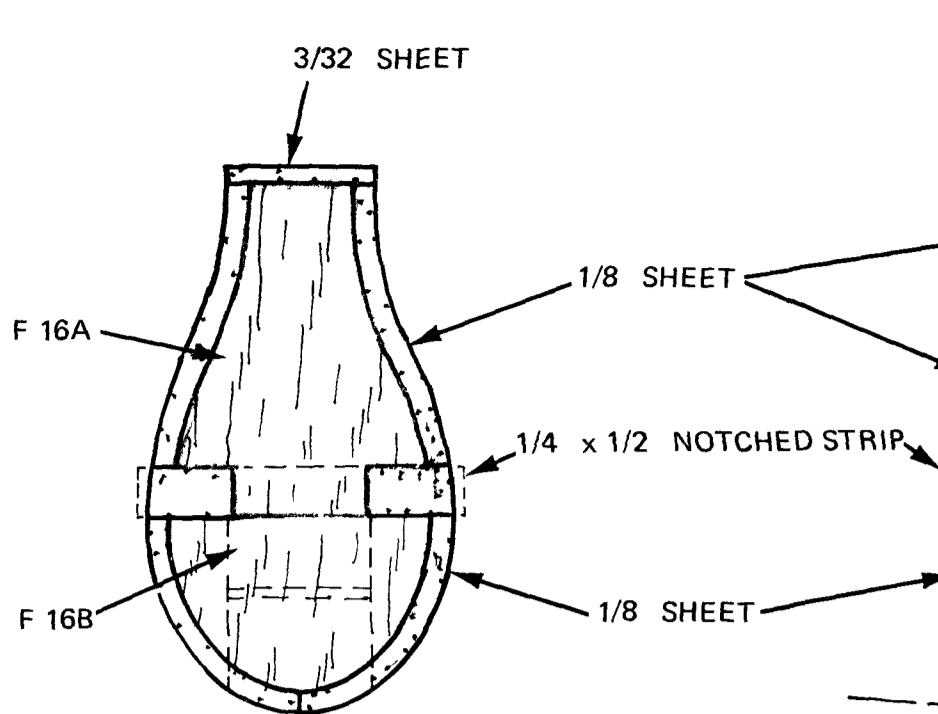
SECTION A-A

SECTION D-D

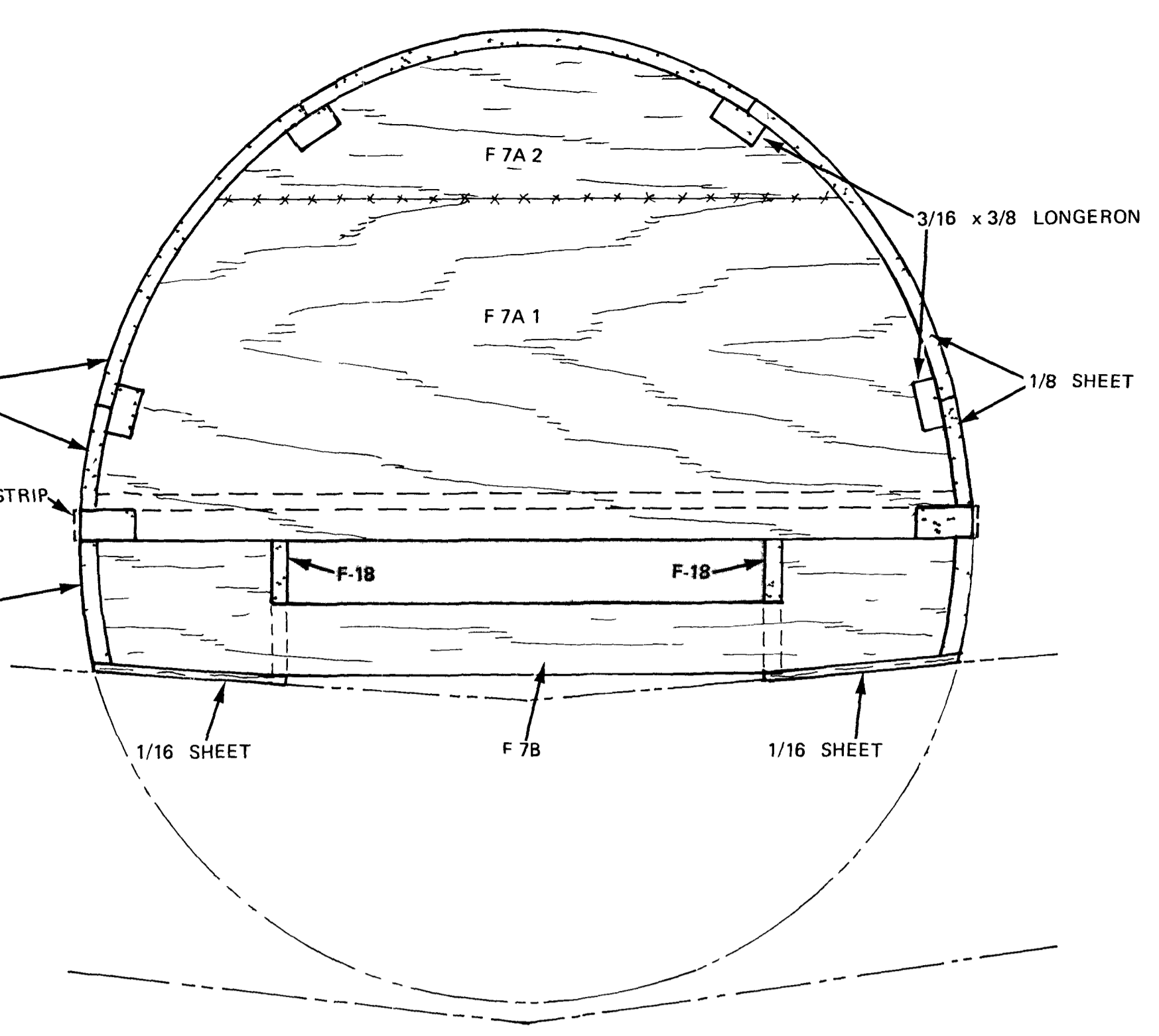
**TOP/BOTTOM VIEW
 SHOWN WITHOUT SHEETING FOR CLARITY
 DRAWING ABOVE C/L IS TOP VIEW
 DRAWING BELOW C/L IS BOTTOM VIEW**



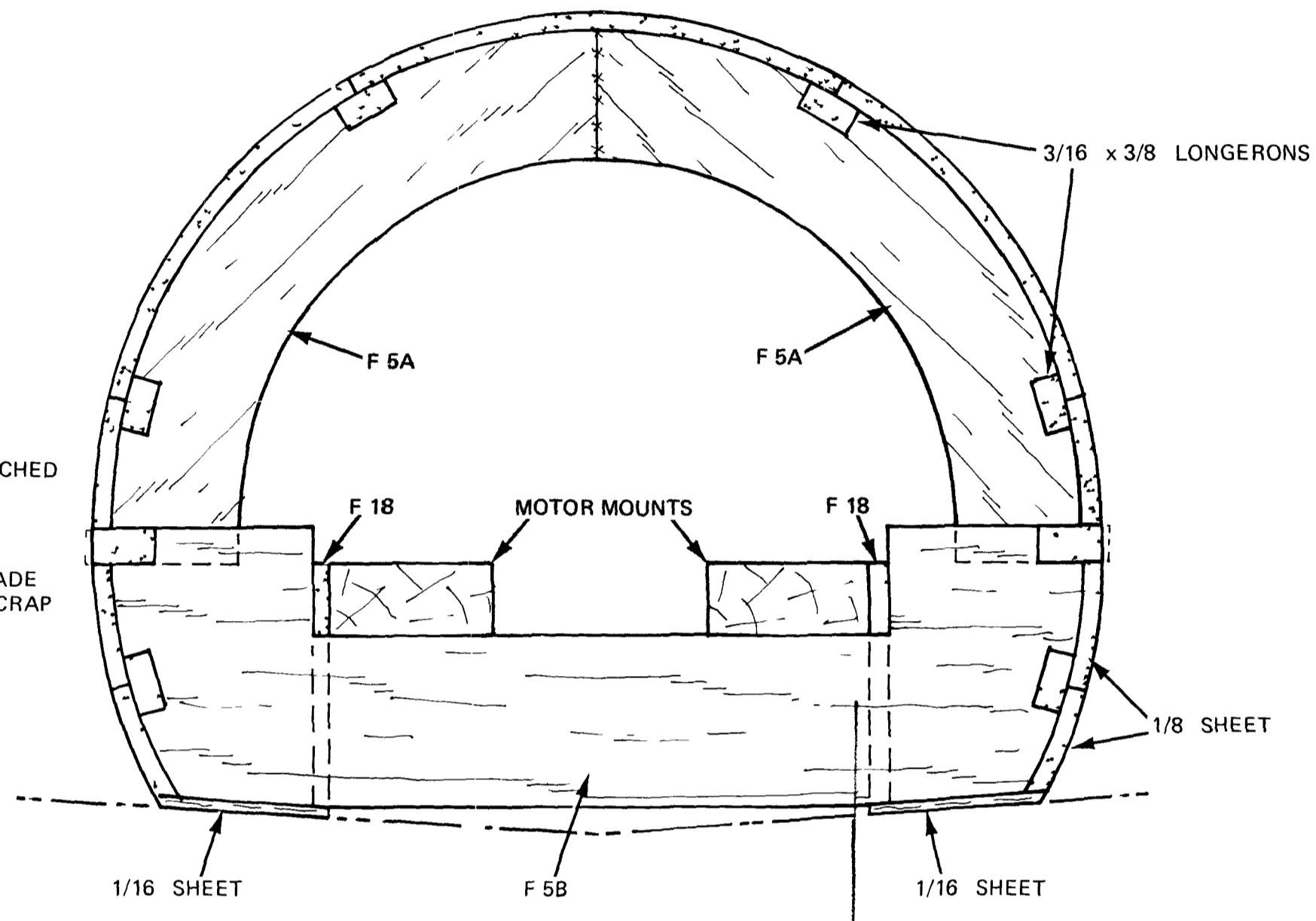
SECTION H-H



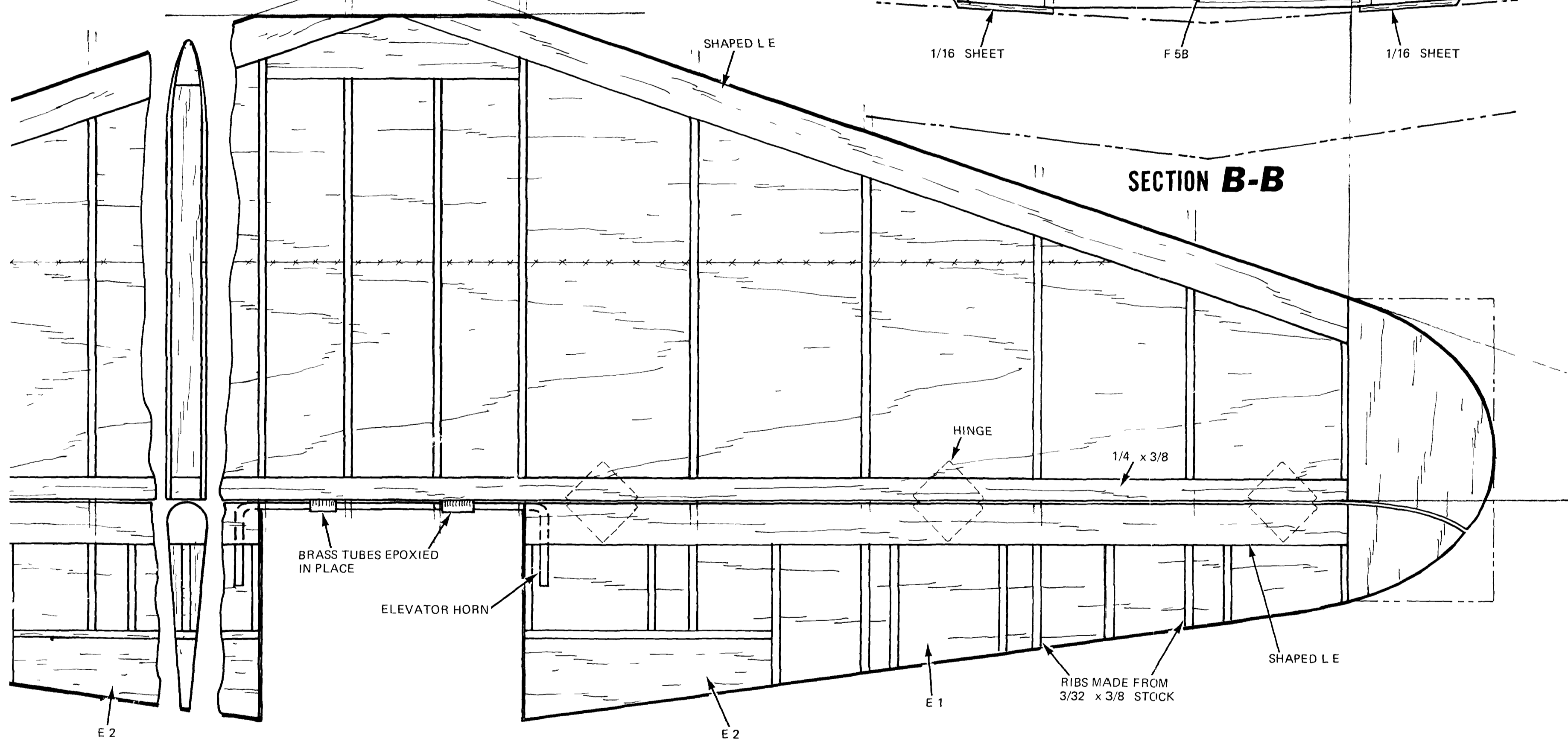
SECTION J-J



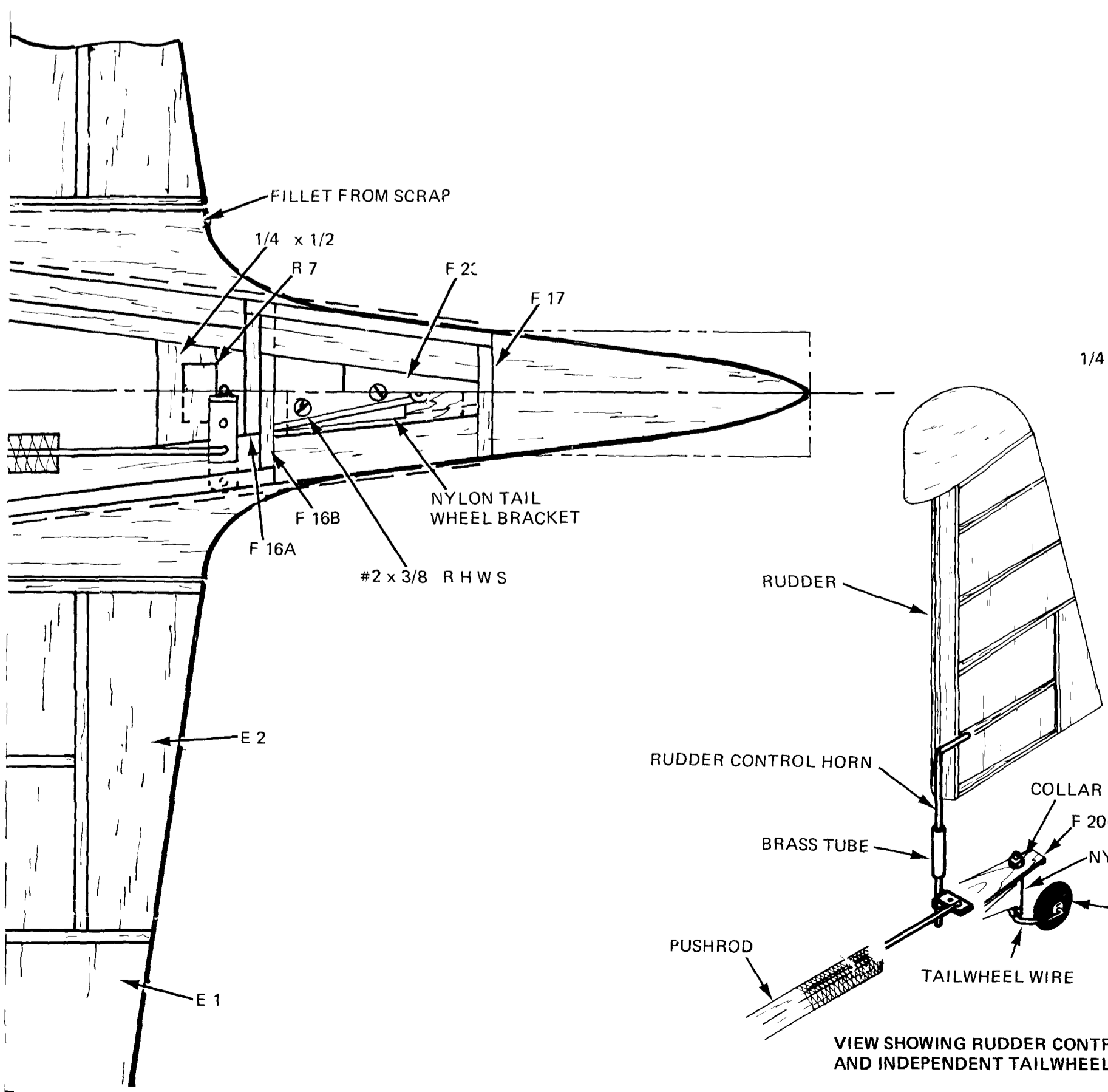
SECTION C-C



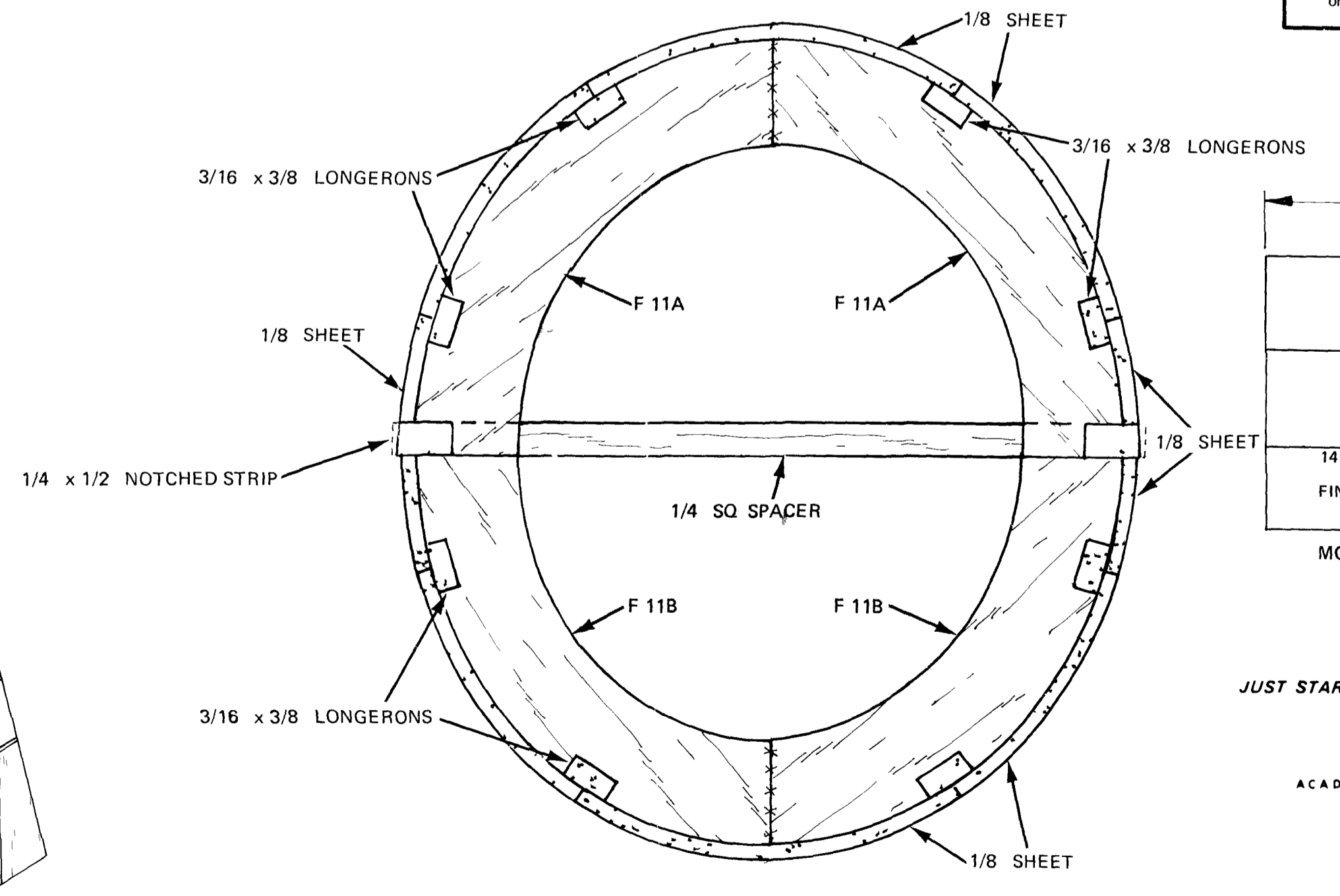
SECTION B-B



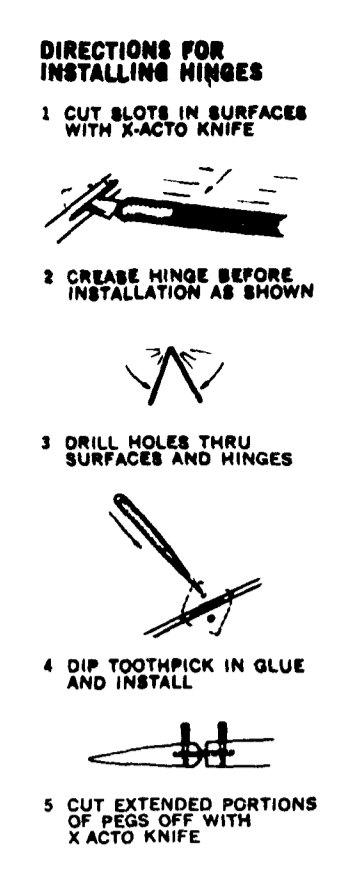
STABILIZER/ELEVATOR



VIEW SHOWING RUDDER CONTROL HOOK UP AND INDEPENDENT TAILWHEEL



SECTION F-F



INSTRUCTION AND WARNING SHEET
HOW TO USE PROPELLERS SAFELY & PROPERLY
 The failure to read and follow instructions above or misuse may result in serious personal injury!
 1 For correct propeller size and pitch follow advice of engine manufacturer or prop chart available free from dealer of Top Flite
 2 Install prop with Curved Pinning you. See Curved pinning propeller eye correct wrench for this purpose
 3 When starting engine keep propellers away 120 feet or more and out of path of rotating prop
 4 Keep hands away from prop as much as possible use check/stop device or electric starter follow instructions supplied with device
 5 Keep face and body away from path of prop as you start and run engine
 6 Make all engine adjustments from behind rotating prop
 7 To stop engine cut off fuel supply or follow engine manufacturer's directions. DON'T use hands fingers or any part of body DON'T throw anything into a running engine
 8 Observe any props with nicks scratches splits or cracks or any sign of wear or damage Never repair after shave or bend a prop! Normal engine vibration can loosen a prop inspect and retighten if necessary!

ADDITIONAL PRECAUTIONS
 A Use safety glasses when starting or running engine
 B Don't run engine in area of loose gravel or sand prop may throw such material in face or eyes
 C KEEP AWAY FROM PROP Loose clothing — shirt sleeves — ties — scarfs or loose objects (pencil screw drivers) that may fall out of shirt or jacket pockets into prop
 D Make certain glow plug clip or connector is secure so that it will not pop off or otherwise get into running prop
 E If a spinner is used be certain its edges do not touch the prop blades

ADDITIONAL SPECIAL WARNINGS AND INSTRUCTIONS FOR NYLON PROPELLERS
 Nylon props are affected by amount of moisture in the air and will become brittle and break if too dry. Since amount of moisture may vary greatly from time of manufacture do as follows:
 1 Soak each propeller in water for 30 minutes before first use. Water should cover the entire prop. Do not cover pot. Let prop stay in water until cool
 2 You can add dye (bit etc) in the water to identify banded props as against unbanded
 3 After use of prop remove from engine wrap in moist cloth paper towel or rag and store in a water tight plastic bag

RETRACTING LANDING GEAR
 DUE TO THE LARGE NUMBER OF SYSTEMS PRESENTLY AVAILABLE SPECIFIC INSTALLATION DIAGRAMS FOR ALL TYPES ARE NOT POSSIBLE IN ALL CASES FOLLOW INSTRUCTIONS PROVIDED WITH YOUR SYSTEM IN CASE OF DIFFICULTY CONTACT GEAR MANUFACTURER

WOOD INFORMATION
 TOP FLITE MODELS INC STRIVE TO FURNISH THE FINEST GRADE Balsa THAT IS POSSIBLE. WORLD WIDE DEMAND FOR Balsa sometimes exceeds the supply making the finest grade Balsa difficult to obtain. TOP FLITE INSISTS THAT ONLY THE HIGHEST QUALITY Balsa AVAILABLE AT THE TIME BE SHIPPED TO THEM.
 SMALL KNOTS OR STAINS IN THE Balsa DOES NOT AFFECT IT'S STRENGTH. ALL WOOD Balsa INCLUDED WILL WARP OR BOW DURING THE CUTTING AND OTHER MANUFACTURING OPERATIONS. THESE PIECES CAN BE BENT BACK INTO ALIGNMENT DURING BUILDING. IN THE CASE OF SHEETS THE EDGES CAN BE TRUED UP BY USING A METAL STRAIGHT EDGE AND A RAZOR BLADE.
 TOP FLITE DOES IT'S BEST TO ASSURE YOU OF THE QUALITY YOU HAVE EXPECTED AND RECEIVED OVER THE YEARS

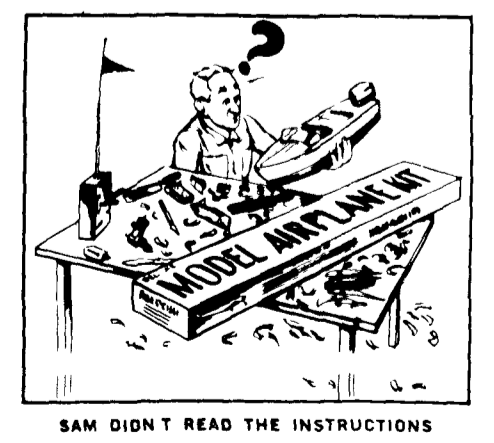
WARNING !!!
 A radio controlled model is not a toy. Care and caution must be taken in properly building the model as well as in the installation and use of the radio control device. It is important to follow all directions as to the construction of this kit as well as installation and use of the engine and radio gear. The advice and assistance of a well experienced builder and pilot is highly recommended. Don't take chances! Improper building operation or flying of this model could result in serious bodily injury to others, yourself or property damage.

MONOKOTE CUTTING CHART FOR FUSELAGE AND TAIL SURFACES

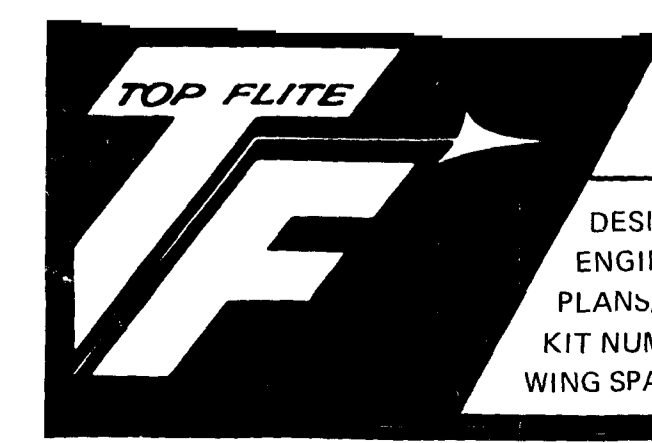
STANDARD 6 FT LENGTH		
28		44
STAB		
28		FUSELAGE
STAB		
14	14	28
FIN	FIN	

JUST STARTED MODELING? THEN JOIN THE

ACADEMY OF MODEL AERONAUTICS
 Write for details to
 915 Fifteenth St. N.W.
 Washington, D.C. 20005

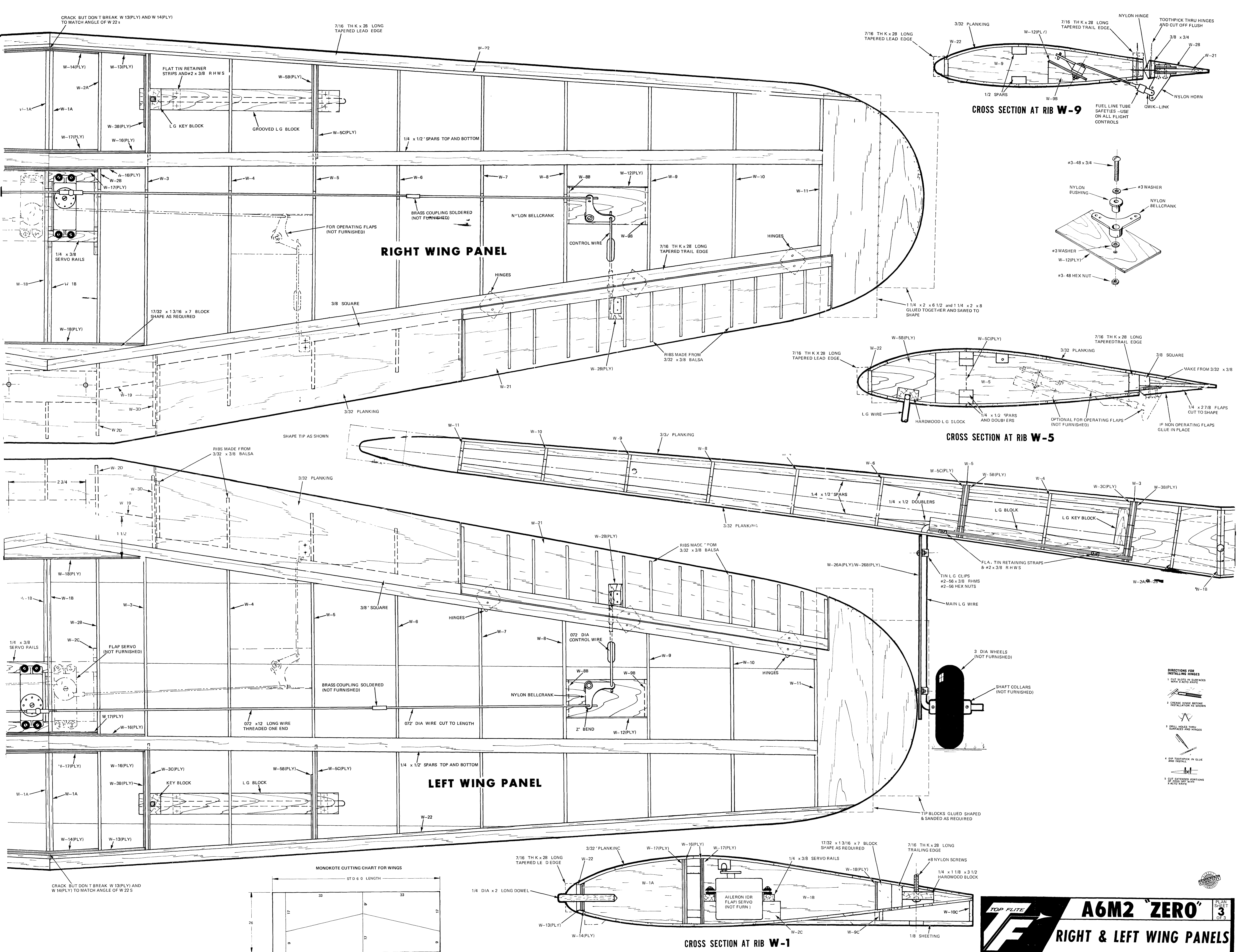


SCALE
 Prop 1:4.25"



A6M2 "ZERO"

DESIGNED BY	HAL PARENTI	WING AREA	688 SQ INCHES
ENGINEERED BY	SCOTT CHRISTENSEN	LENGTH	49 1/4"
PLANS/INSTRUCT BY	CARL LINDEE	ENGINE SIZE	60 TO 90 RC
KIT NUMBER	RC 25	RADIO	TO 8 CHANNEL
WING SPAN	61 INCHES	WEIGHT	7 3/4 TO 10 LBS

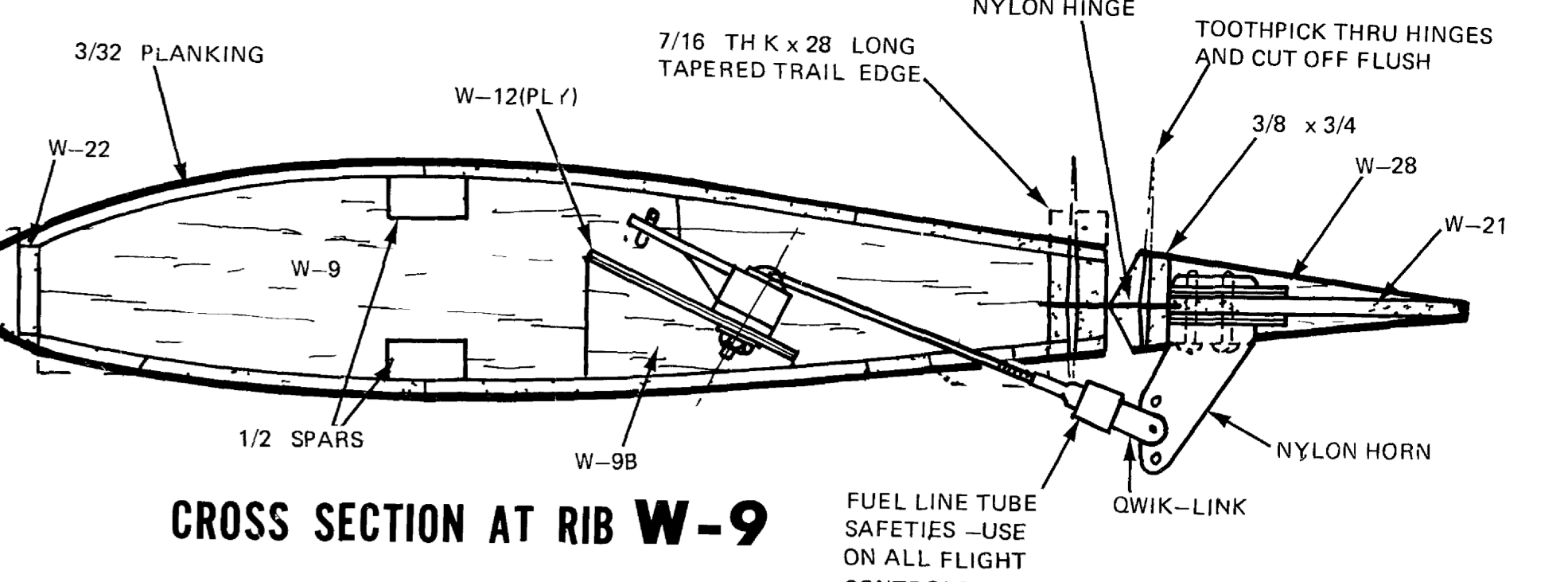


CRACK BUT DON'T BREAK W 13(PLY) AND W 14(PLY) TO MATCH ANGLE OF W 22'S

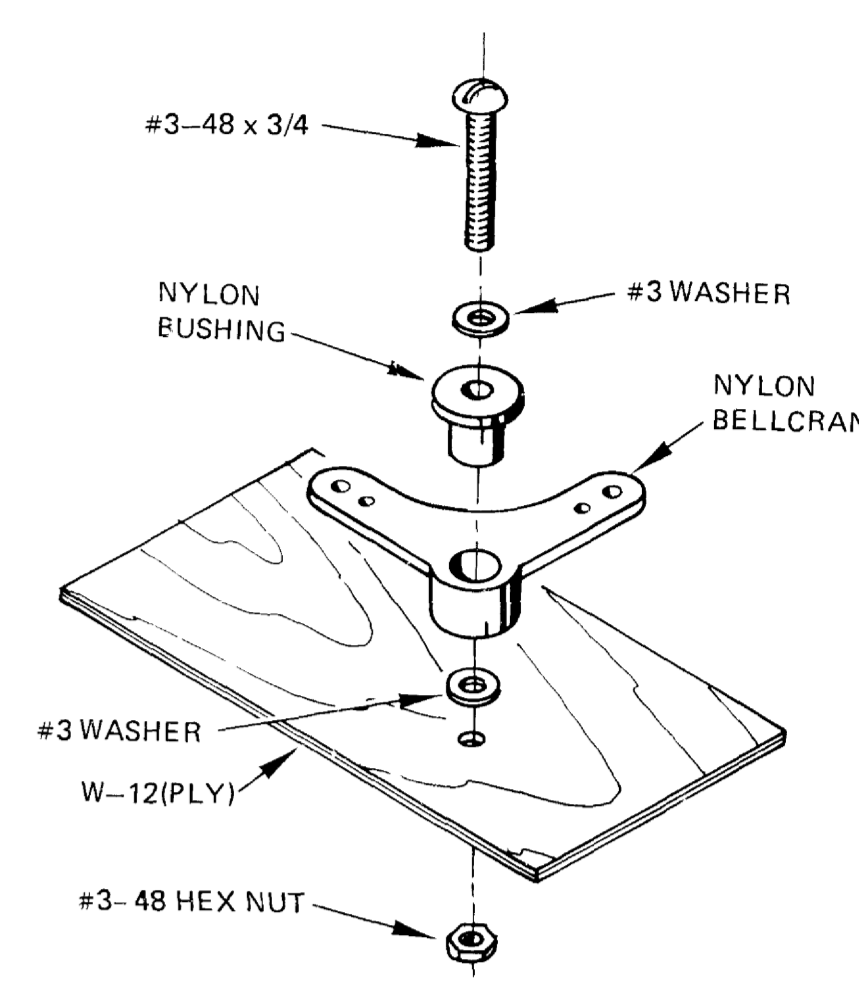
7/16 TH K x 28 LONG TAPERED LEAD EDGE

W-22

7/16 TH K x 28 LONG TAPERED LEAD EDGE

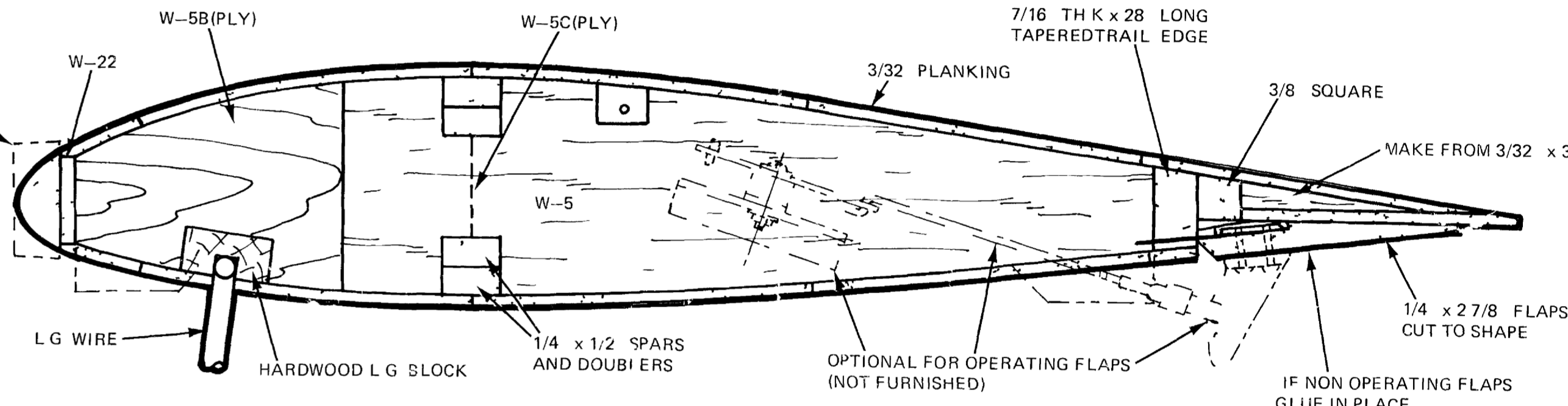


CROSS SECTION AT RIB W-9



RIGHT WING PANEL

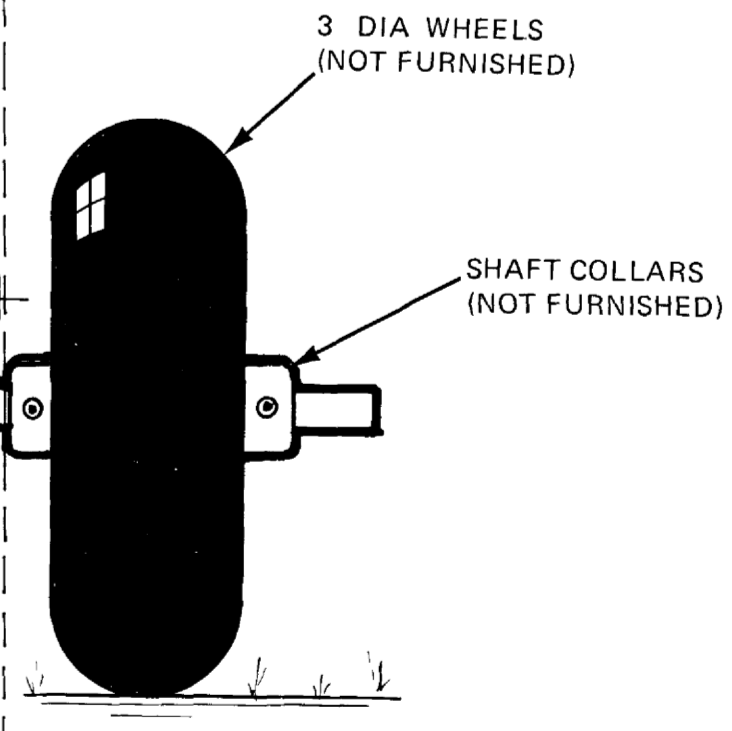
3/8 SQUARE



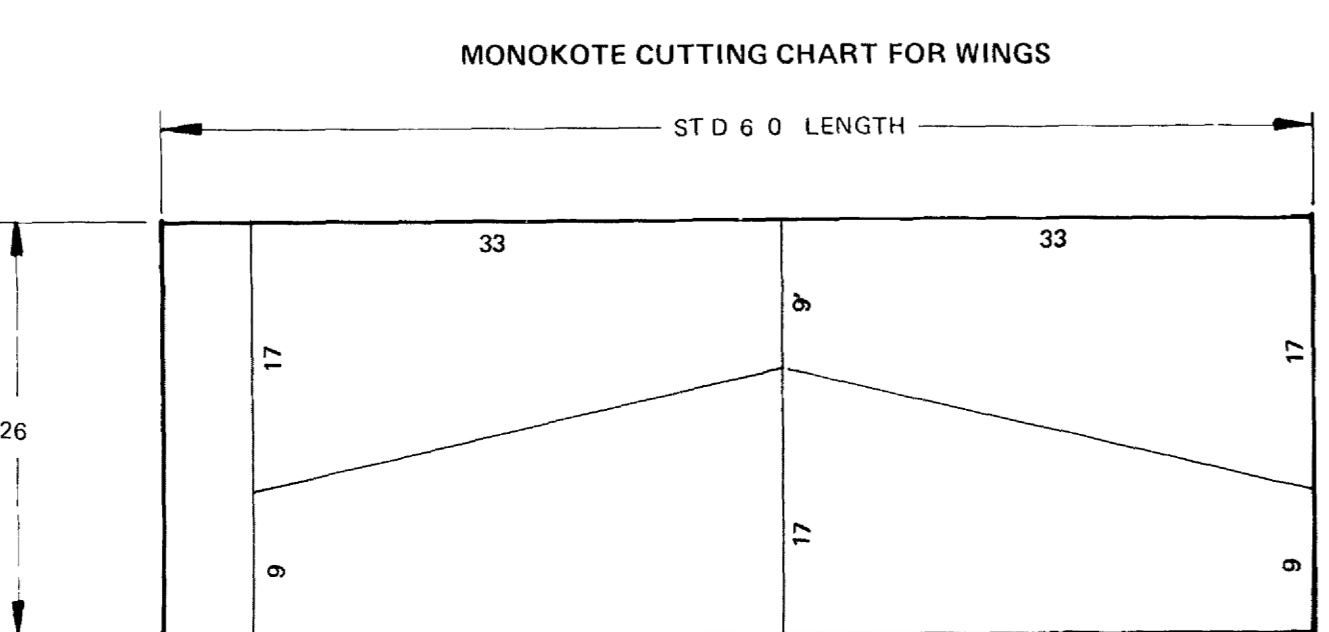
CROSS SECTION AT RIB W-5

LEFT WING PANEL

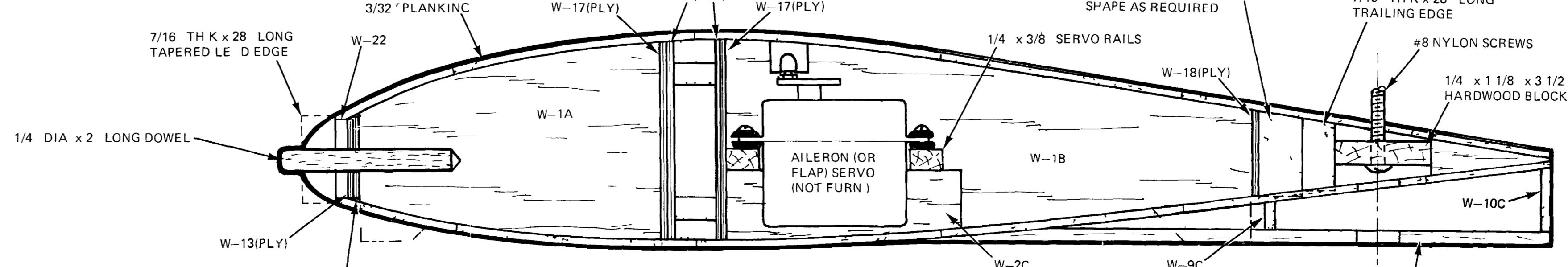
3/8 SQUARE



- DIRECTIONS FOR INSTALLING HINGES**
- CUT HOLES IN SURFACES WITH X-ACTO KNIFE
 - CREATE HINGE BEFORE INSTALLATION AS SHOWN
 - DRILL HOLES THRU SURFACES AND HINGES
 - GLUE TOOTHPICK IN GLUE AND RETAIL
 - IF FITTED PORTIONS FACTORY-WIRE



CRACK BUT DON'T BREAK W 13(PLY) AND W 14(PLY) TO MATCH ANGLE OF W 22'S



CROSS SECTION AT RIB W-1

TOP FLITE
A6M2 "ZERO"
RIGHT & LEFT WING PANELS
PLAN SHEET 3 OF 3
© TOP FLITE MODELS INC 1981 150307 RC 25 No 3