

WING IS BUILT UP SIDE DOWN ON FLAT, THUS NO DIHEDRAL AS TOP OF WING IS FLAT. SOFT BLOCK TIPS

NOTE SWEEPBACK ON T.E. CHAMFER THIS AREA TO FIT FUSELAGE

1/8" x 1/16" T.E. SECTION

OUTLINE OF 1/16" SHEET WING FAIRING

WING VIEWED FROM UNDER SIDE

SUGGESTED SHEET JOINTS

BONNER TYPE HINGES CUT INTO THESE

AILERON SPARS CUT FROM 1/4" SHEET

SMALL BLOCK HORN MOUNT

1/16" PLY DRILL CRANK MOUNT

SERVO AREA

1/8" PUSHROD

1/16" SHEET COVERING

ALL RIBS 1-9 1/16" SHEET

SPARS CUT FROM 1/8" SHEET. STAGGER JOINT TOP & BOTTOM

SHAPE UIC MOUNT TO RIB CONTOURS BEFORE GLUING PERMANENTLY

3/4" x 1/2" HARDWOOD UIC MOUNTS CUT 45°-90° GROOVE. HALF SAW ON 4 AND BEVEL 2 TO DIHEDRAL ANGLE.

GS WOOD SPARKS

1/8" SHEET BRACE TOP & BOTTOM

3/4" x 1/2" HARDWOOD SHAPED TO RIB CONTOUR

1/2" SO. L.E.

BEVEL INSIDE EDGES OF FAIRING BEFORE FITTING.

FUEL FEED HOLE. ENGINE TILTED TO THIS ANGLE

THRUSTLE CONDUIT. TANK VENT HOLE

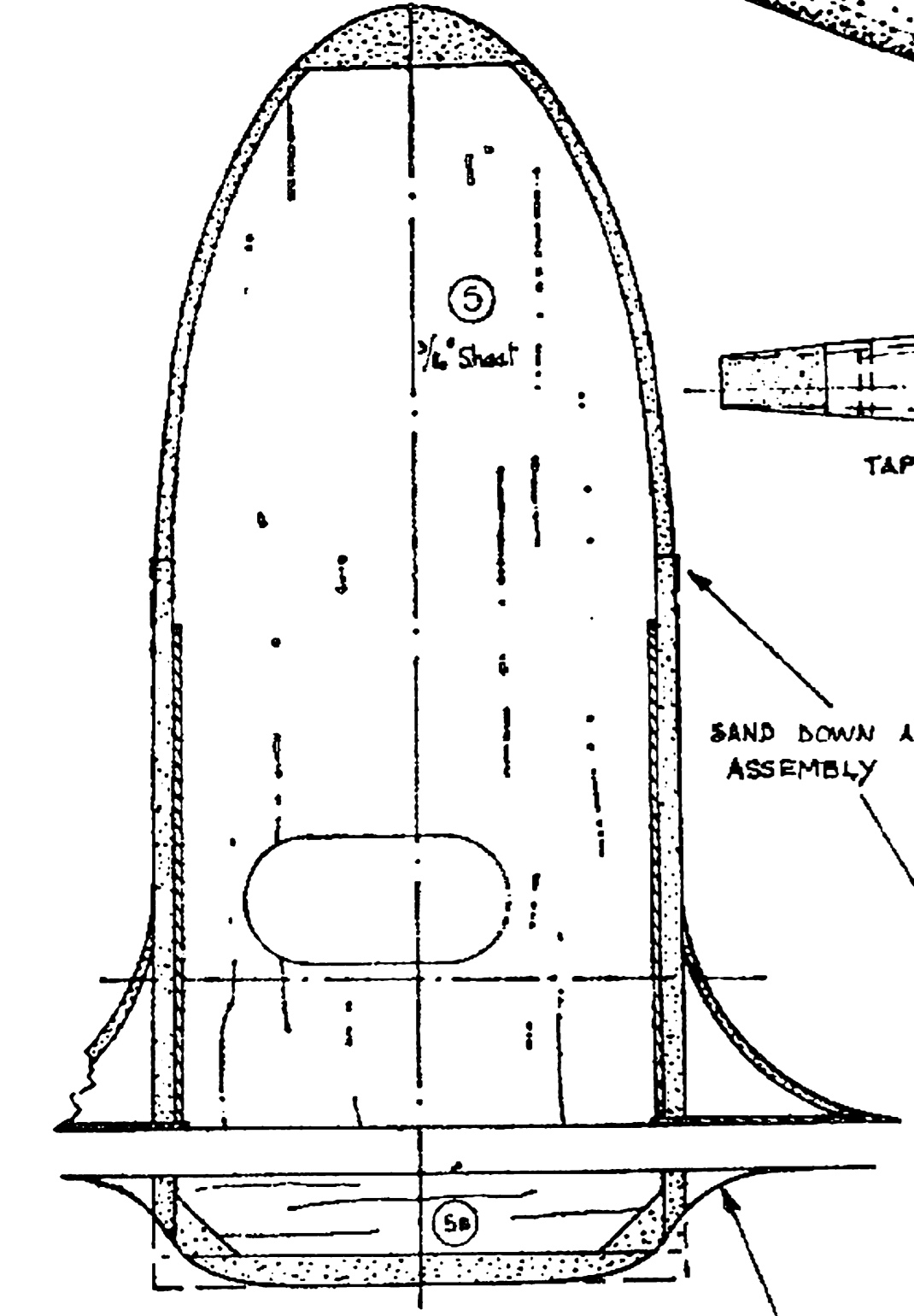
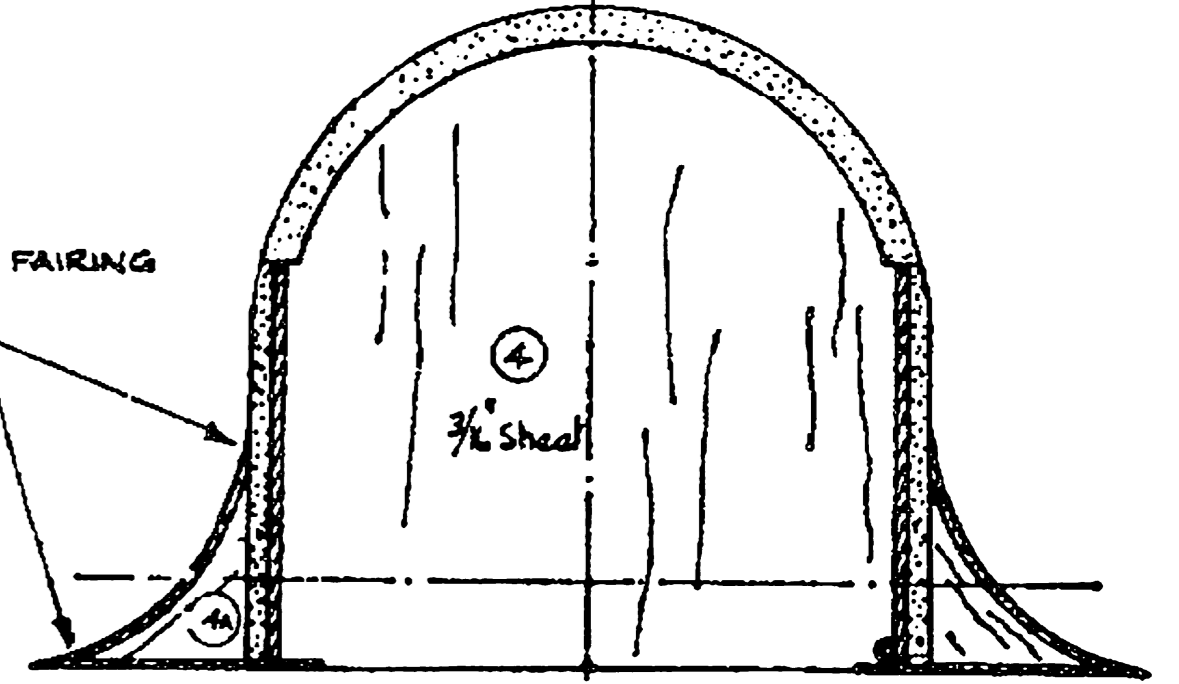
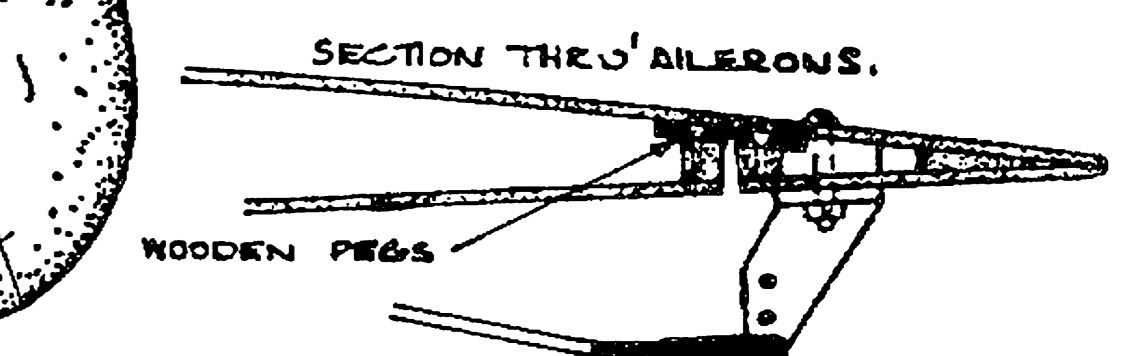
1/4" PLY

AIR OUTLET.

ACTUAL SHAPE OF TOPSIDES.

1/2" SHEET TOP SEE PLAN VIEW.

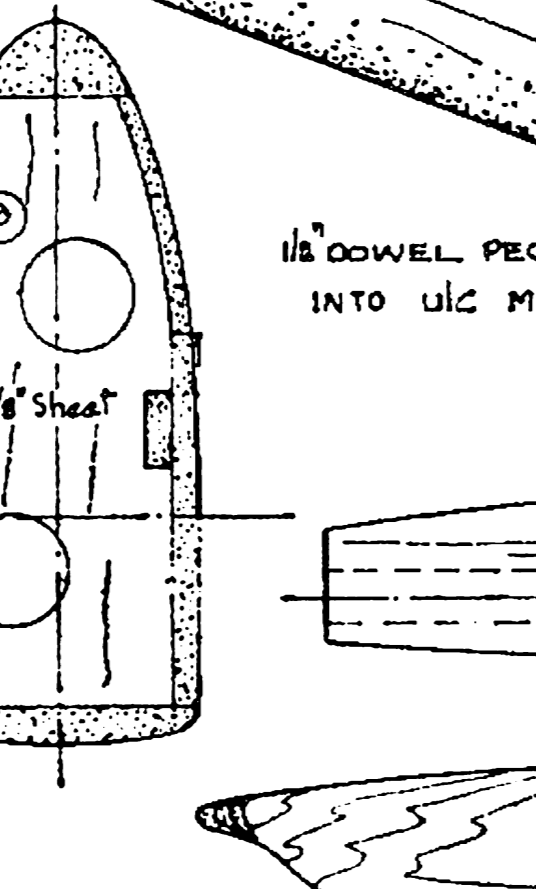
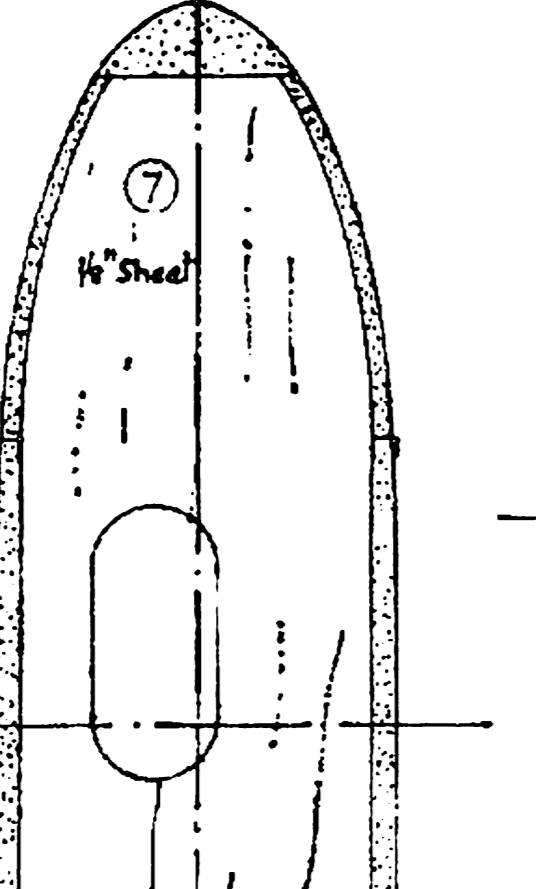
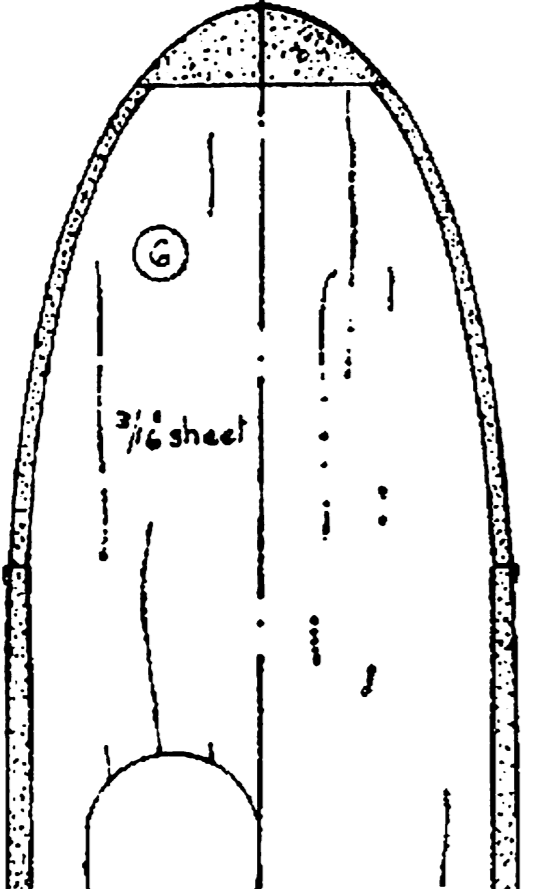
GRAIN DIRECTION



1/16" SHEET

TAPER TO RIB CONTOUR

SAND DOWN AFTER ASSEMBLY



1/16" DOWEL PEGS THRU L.E. INTO UIC MOUNT.

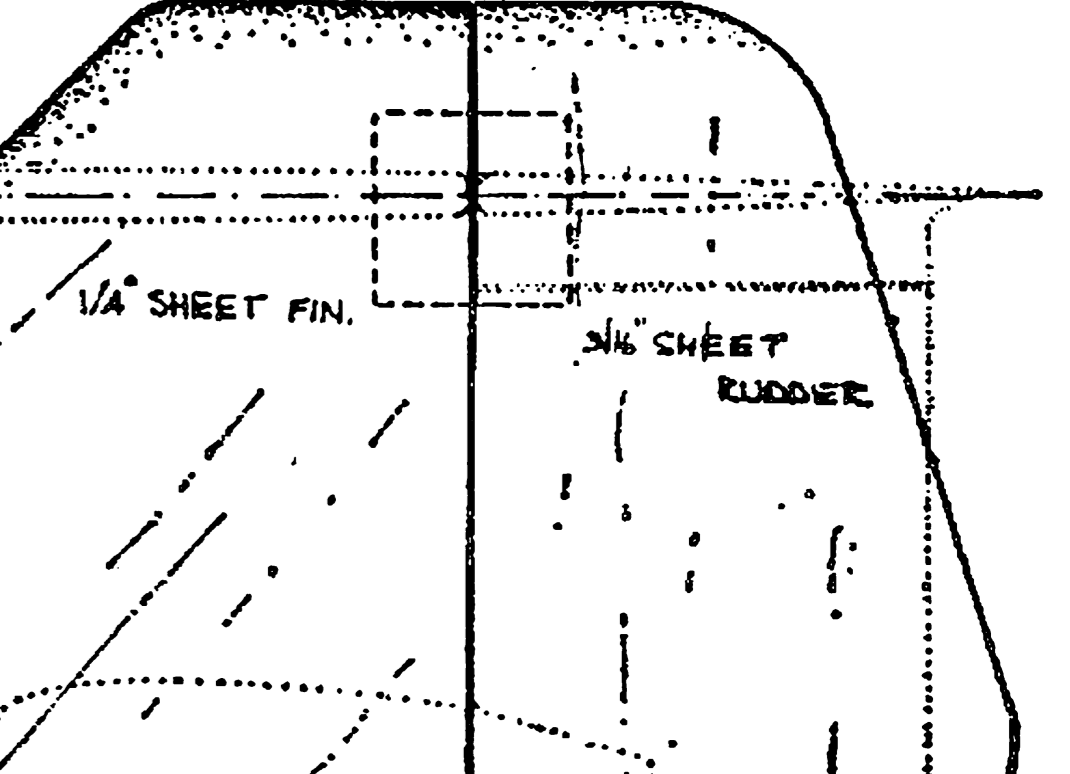
FILLETTS FORMED FROM PLASTIC WOOD OR SIMILAR MATERIAL.

MICRO-MOLD CANOPY

PAINT LINE

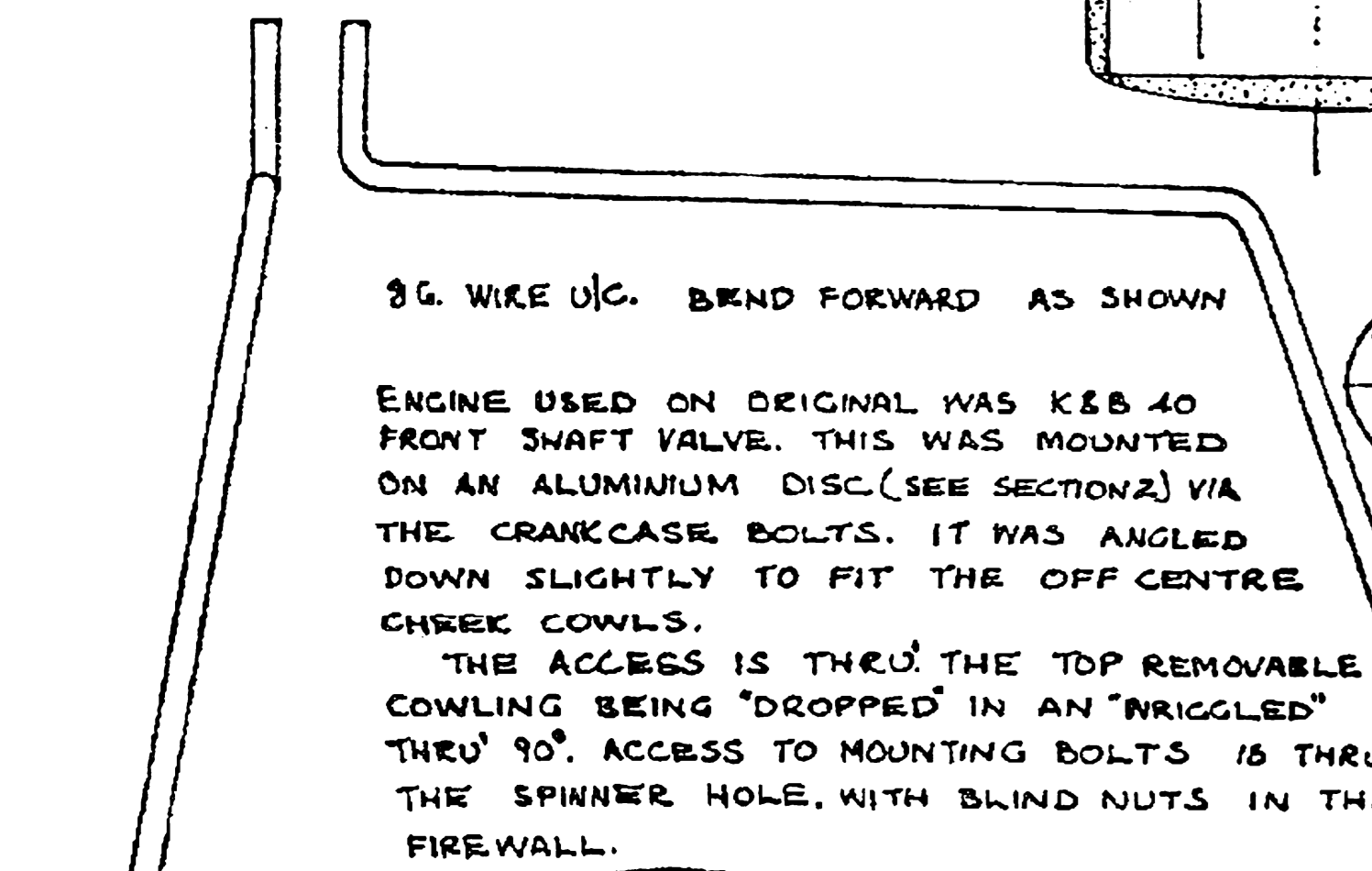
1/32" SHEET TOPSIDES.

GRAIN DIRECTION



1/4" SHEET FIN.

1/4" SHEET RUDDER.



ENGINE USED ON ORIGINAL WAS K&B .40 FRONT SHAFT VALVE. THIS WAS MOUNTED ON AN ALUMINIUM DISC (SEE SECTION 2) VIA THE CRANKCASE BOLTS. IT WAS ANGLED DOWN SLIGHTLY TO FIT THE OFF CENTRE CHEEK COWLS. THE ACCESS IS THRU THE TOP REMOVABLE COWLING BEING "DROPPED" IN AN "WRIGGLED" THRU 90° ACCESS TO MOUNTING BOLTS IS THRU THE SPINNER HOLE. WITH BLIND NUTS IN THE FIREWALL.

SOFT BLOCK COWLING

SOFT BLOCK UNDER NOSE

2 1/2" SPINNER

SOFT BLOCK UNDER NOSE

18G BRASS SOLDER WELL TO UIC LEGS.

1/16" PLY

1/16" PLY

1/16" PLY

1/16" PLY

1/16" PLY

1/16" PLY

1/16" PLY

1/16" PLY

1/16" PLY

1/16" PLY

1/16" PLY

SOFT BLOCK TOP OR 3/16" PLANKING

FAIRING OUTLINE

1/16" PLY DOUBLERS WITH LIGHTENING HOLES.

1/16" PLY DOUBLERS WITH LIGHTENING HOLES.

1/16" PLY DOUBLERS WITH LIGHTENING HOLES.

1/16" PLY DOUBLERS WITH LIGHTENING HOLES.

1/16" PLY DOUBLERS WITH LIGHTENING HOLES.

1/16" PLY DOUBLERS WITH LIGHTENING HOLES.

1/16" PLY DOUBLERS WITH LIGHTENING HOLES.

1/16" PLY DOUBLERS WITH LIGHTENING HOLES.

1/16" PLY DOUBLERS WITH LIGHTENING HOLES.

1/16" PLY DOUBLERS WITH LIGHTENING HOLES.

1/16" PLY DOUBLERS WITH LIGHTENING HOLES.

1/16" PLY DOUBLERS WITH LIGHTENING HOLES.

1/16" PLY DOUBLERS WITH LIGHTENING HOLES.

1/16" PLY DOUBLERS WITH LIGHTENING HOLES.

SOFT BLOCK TOP OR 3/16" PLANKING

FAIRING OUTLINE

1/16" PLY DOUBLERS WITH LIGHTENING HOLES.

1/16" PLY DOUBLERS WITH LIGHTENING HOLES.

1/16" PLY DOUBLERS WITH LIGHTENING HOLES.

1/16" PLY DOUBLERS WITH LIGHTENING HOLES.

1/16" PLY DOUBLERS WITH LIGHTENING HOLES.

1/16" PLY DOUBLERS WITH LIGHTENING HOLES.

1/16" PLY DOUBLERS WITH LIGHTENING HOLES.

1/16" PLY DOUBLERS WITH LIGHTENING HOLES.

1/16" PLY DOUBLERS WITH LIGHTENING HOLES.

1/16" PLY DOUBLERS WITH LIGHTENING HOLES.

1/16" PLY DOUBLERS WITH LIGHTENING HOLES.

1/16" PLY DOUBLERS WITH LIGHTENING HOLES.

1/16" PLY DOUBLERS WITH LIGHTENING HOLES.

1/16" PLY DOUBLERS WITH LIGHTENING HOLES.

SOFT BLOCK TOP OR 3/16" PLANKING

FAIRING OUTLINE

1/16" PLY DOUBLERS WITH LIGHTENING HOLES.

1/16" PLY DOUBLERS WITH LIGHTENING HOLES.

1/16" PLY DOUBLERS WITH LIGHTENING HOLES.

1/16" PLY DOUBLERS WITH LIGHTENING HOLES.

1/16" PLY DOUBLERS WITH LIGHTENING HOLES.

1/16" PLY DOUBLERS WITH LIGHTENING HOLES.

1/16" PLY DOUBLERS WITH LIGHTENING HOLES.

1/16" PLY DOUBLERS WITH LIGHTENING HOLES.

1/16" PLY DOUBLERS WITH LIGHTENING HOLES.

1/16" PLY DOUBLERS WITH LIGHTENING HOLES.

1/16" PLY DOUBLERS WITH LIGHTENING HOLES.

1/16" PLY DOUBLERS WITH LIGHTENING HOLES.

1/16" PLY DOUBLERS WITH LIGHTENING HOLES.

1/16" PLY DOUBLERS WITH LIGHTENING HOLES.

SOFT BLOCK TOP OR 3/16" PLANKING

FAIRING OUTLINE

1/16" PLY DOUBLERS WITH LIGHTENING HOLES.

1/16" PLY DOUBLERS WITH LIGHTENING HOLES.

1/16" PLY DOUBLERS WITH LIGHTENING HOLES.

1/16" PLY DOUBLERS WITH LIGHTENING HOLES.

1/16" PLY DOUBLERS WITH LIGHTENING HOLES.

1/16" PLY DOUBLERS WITH LIGHTENING HOLES.

1/16" PLY DOUBLERS WITH LIGHTENING HOLES.

1/16" PLY DOUBLERS WITH LIGHTENING HOLES.

1/16" PLY DOUBLERS WITH LIGHTENING HOLES.

1/16" PLY DOUBLERS WITH LIGHTENING HOLES.

1/16" PLY DOUBLERS WITH LIGHTENING HOLES.

1/16" PLY DOUBLERS WITH LIGHTENING HOLES.

1/16" PLY DOUBLERS WITH LIGHTENING HOLES.

1/16" PLY DOUBLERS WITH LIGHTENING HOLES.

SOFT BLOCK TOP OR 3/16" PLANKING

FAIRING OUTLINE

1/16" PLY DOUBLERS WITH LIGHTENING HOLES.

1/16" PLY DOUBLERS WITH LIGHTENING HOLES.

1/16" PLY DOUBLERS WITH LIGHTENING HOLES.

1/16" PLY DOUBLERS WITH LIGHTENING HOLES.

1/16" PLY DOUBLERS WITH LIGHTENING HOLES.

1/16" PLY DOUBLERS WITH LIGHTENING HOLES.

1/16" PLY DOUBLERS WITH LIGHTENING HOLES.

1/16" PLY DOUBLERS WITH LIGHTENING HOLES.

1/16" PLY DOUBLERS WITH LIGHTENING HOLES.

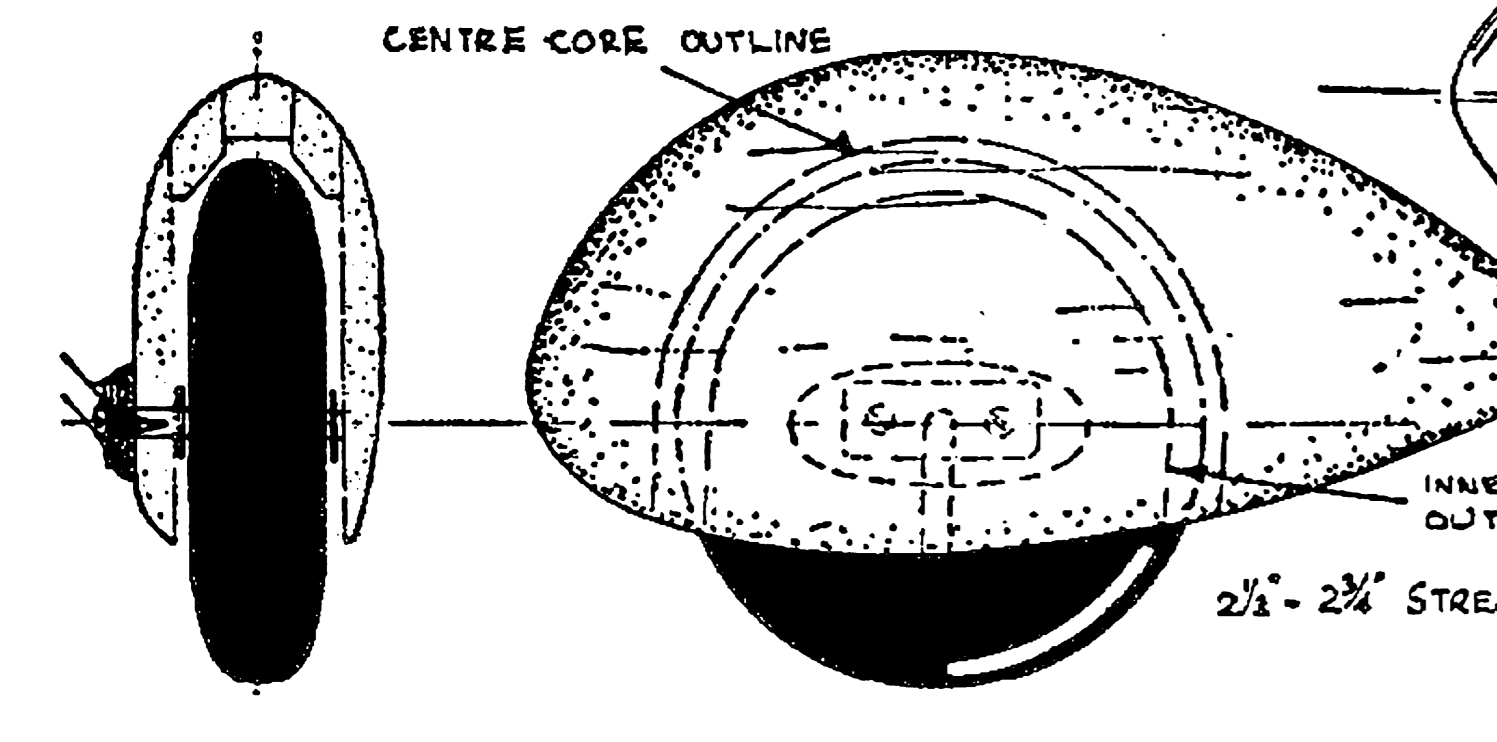
1/16" PLY DOUBLERS WITH LIGHTENING HOLES.

1/16" PLY DOUBLERS WITH LIGHTENING HOLES.

1/16" PLY DOUBLERS WITH LIGHTENING HOLES.

1/16" PLY DOUBLERS WITH LIGHTENING HOLES.

1/16" PLY DOUBLERS WITH LIGHTENING HOLES.



CENTRE CORE OUTLINE

INNER CORE OUTLINE

2 1/2" - 2 3/4" STREAM LINED WHEELS.

1/4" SHEET NOSE DOUBLERS GRAIN VERTICAL

25° SIDE THROUGHT.

1/4" SHEET NOSE DOUBLERS GRAIN VERTICAL

25° SIDE THROUGHT.

AIR OUTLET.

TOP BLOCK OMITTED.

PLANKING LINE UNDERNEATH

1/4" SHEET NOSE DOUBLERS GRAIN VERTICAL

25° SIDE THROUGHT.

AIR OUTLET.

TOP BLOCK OMITTED.

PLANKING LINE UNDERNEATH

1/4" SHEET NOSE DOUBLERS GRAIN VERTICAL

25° SIDE THROUGHT.

AIR OUTLET.

TOP BLOCK OMITTED.

PLANKING LINE UNDERNEATH

1/4" SHEET NOSE DOUBLERS GRAIN VERTICAL

25° SIDE THROUGHT.

AIR OUTLET.

TOP BLOCK OMITTED.

PLANKING LINE UNDERNEATH

1/4" SHEET NOSE DOUBLERS GRAIN VERTICAL

25° SIDE THROUGHT.

AIR OUTLET.

TOP BLOCK OMITTED.

PLANKING LINE UNDERNEATH

1/4" SHEET TAIL PLANE

1/4" SHEET ELEVATOR

1/32" PLY FAIRING BASE. NOTE GRAIN DIRECTION AND BEVELLED EDGE