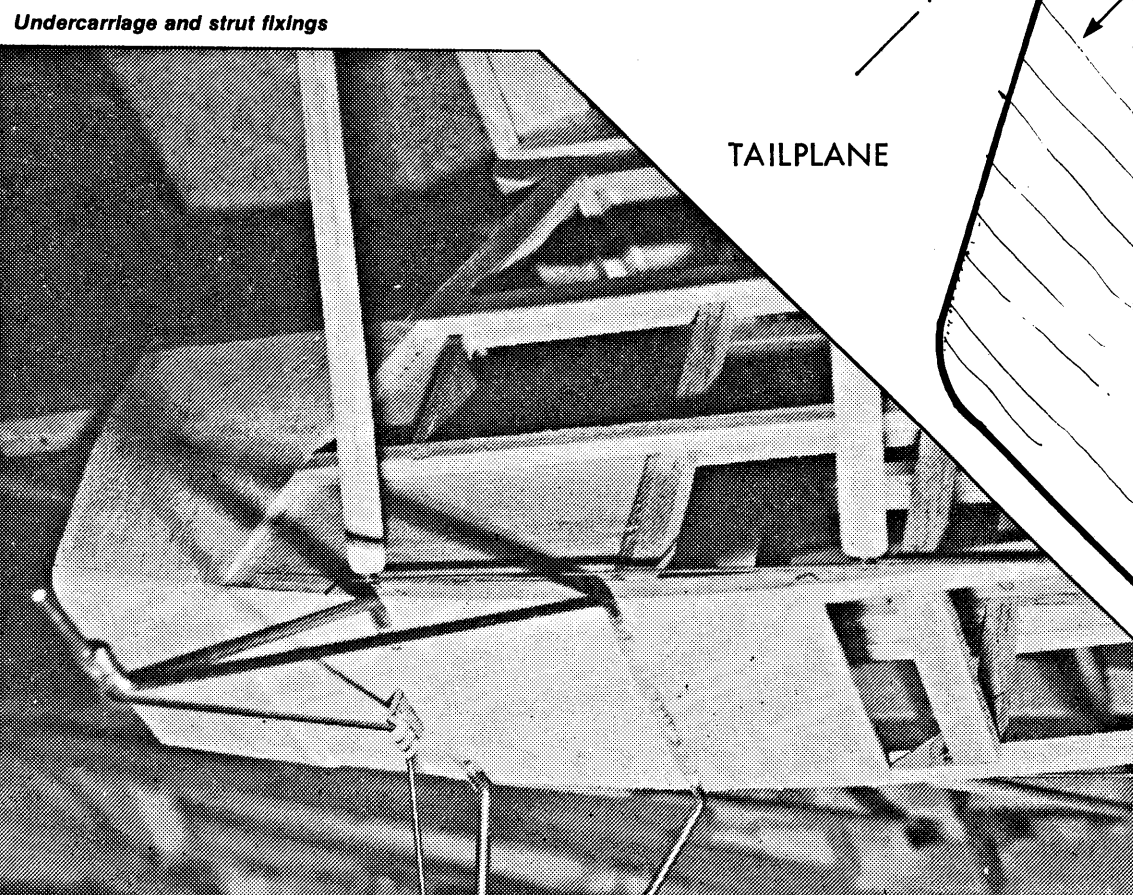
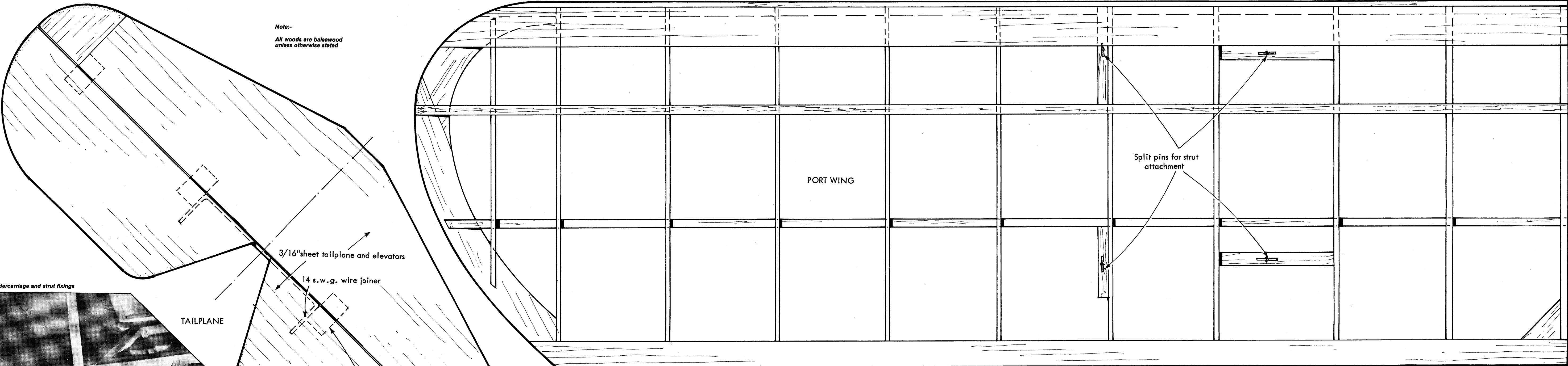


Note:-
All woods are balsawood
unless otherwise stated



Undercarriage and strut fixings

TAILPLANE

3/16" sheet tailplane and elevators

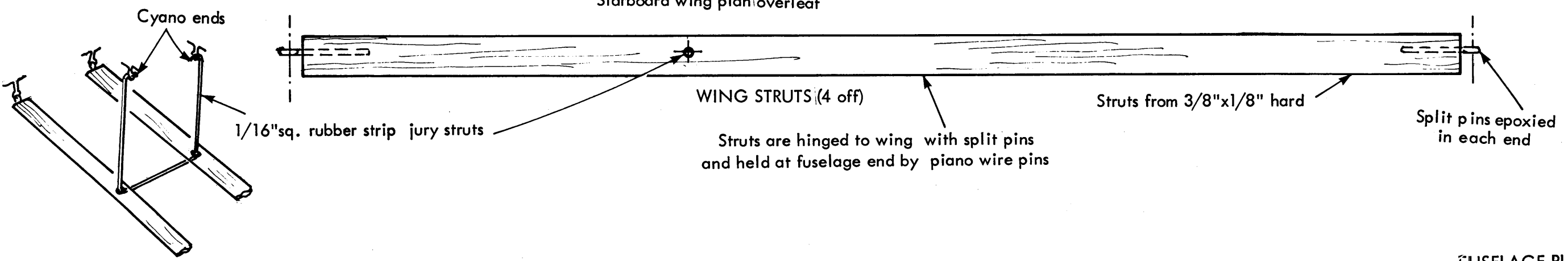
14 s.w.g. wire joiner

Hinge positions

PORT WING

Split pins for strut attachment

NOTE: material sizes shown on
Starboard wing plan/overleaf



Cyano ends

1/16"sq. rubber strip jury struts

WING STRUTS (4 off)

Struts are hinged to wing with split pins
and held at fuselage end by piano wire pins

Struts from 3/8" x 1/8" hard

Split pins epoxied
in each end

Free plan issued with
March 1985 Radio Modeller

Plan value £1.50

FUSELAGE PLANS APPEARED IN RADIO MODELLER LAST MONTH



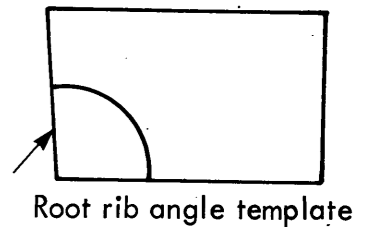
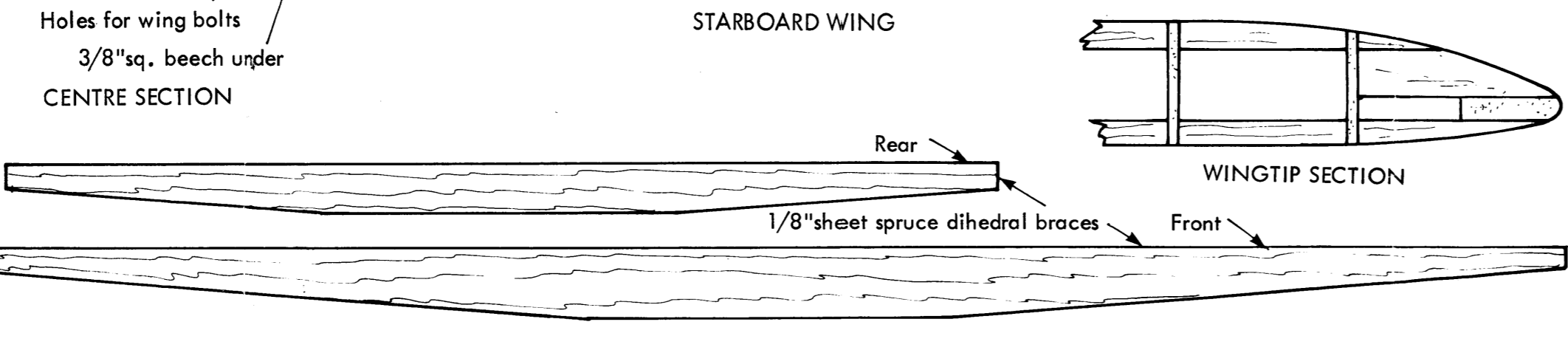
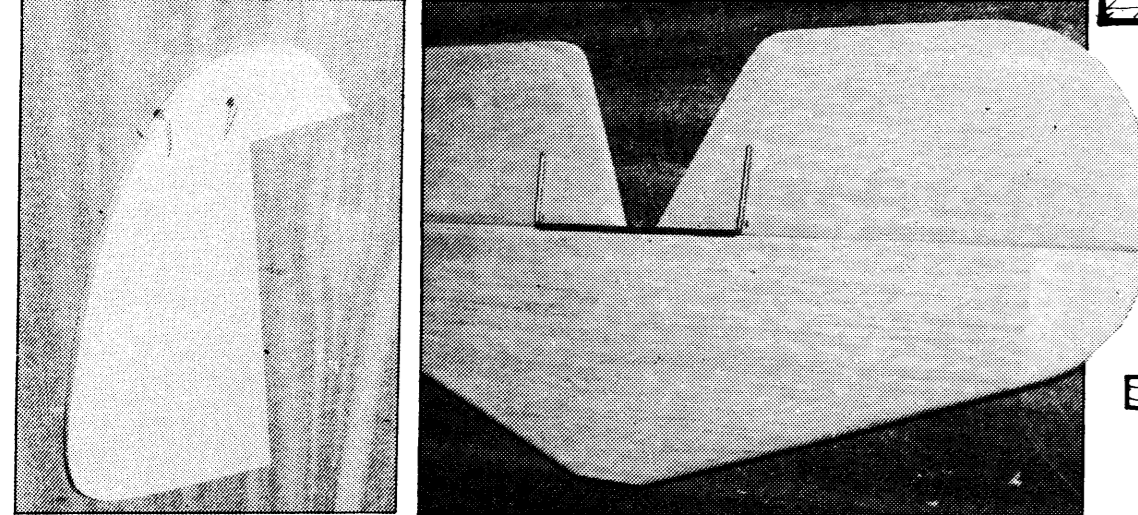
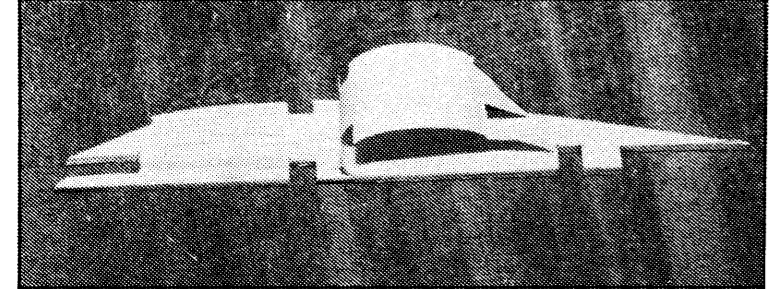
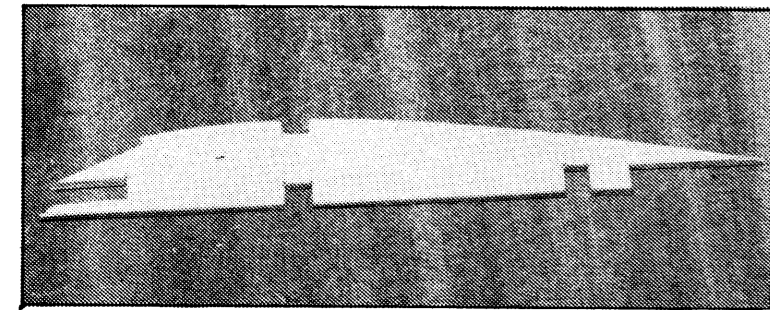
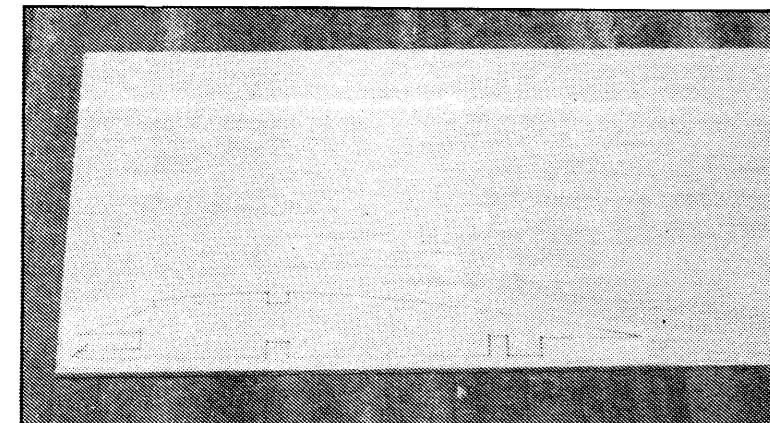
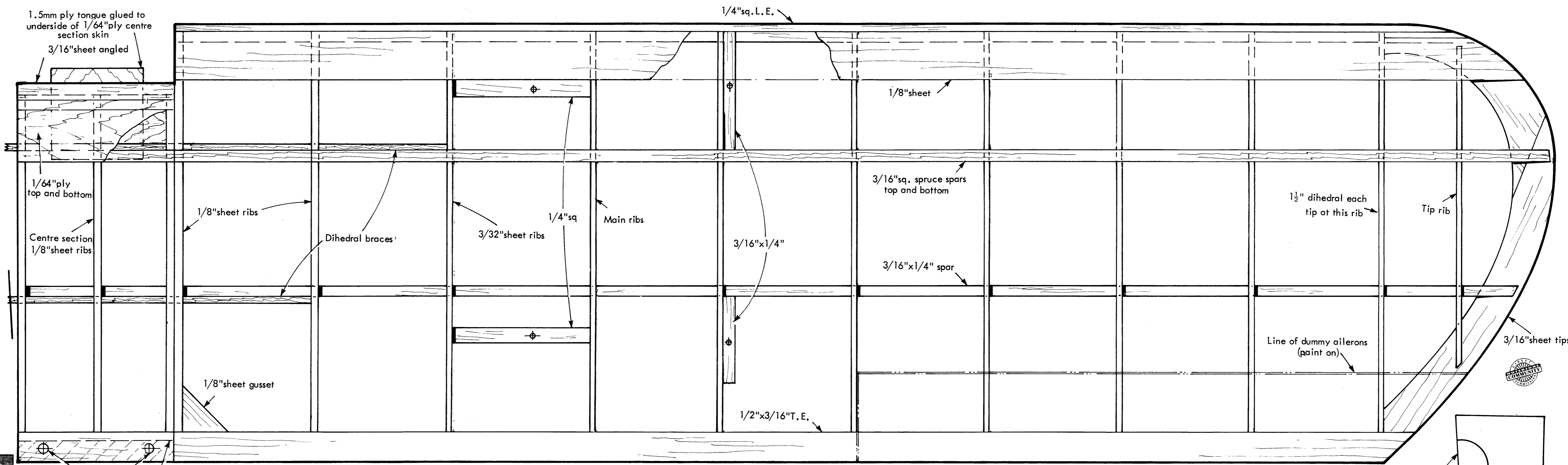
RM Flight Training Course

Porterfield 'Collegiate' CP65

47 1/2 in. span scale model for .15-.19 cu. ins. engines and 3 function radio control.

Main wing ribs are cut by the 'sandwich' method, or by cutting around a plywood or plastic template. Tip ribs, and centre section ribs are easiest to cut by taking a photostat copy of the rib and gluing it to the balsa sheet with Cow Gum (available from stationary stores). The paper backing helps to prevent the wood from splitting. As soon as the rib is cut, peel off the paper and rub away any surplus gum. Cow Gum is applied to the paper only to allow for easy removal.

Tail surfaces are from sheet balsa wood, the tips have the grain running chordwise to resist any warping tendencies. Taper the elevators and the rudder to about 1/16 in. at the trailing edges and round off the leading edges. Note the elevator joiner positioned over the elevators for marking the positions of the holes and grooves.



R.M. Porterfield 'Collegiate'

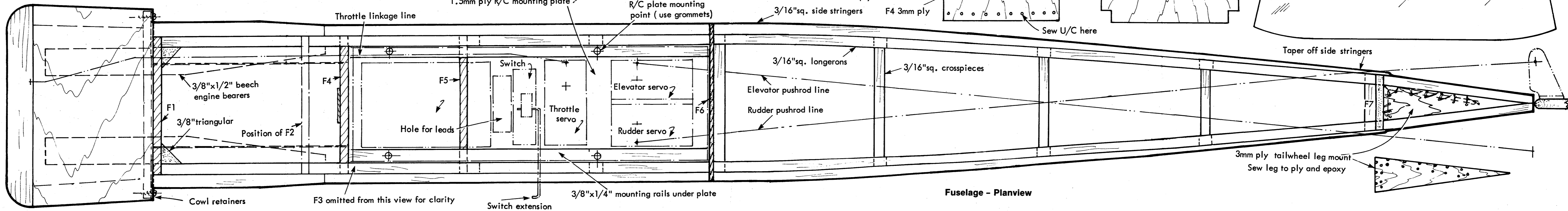
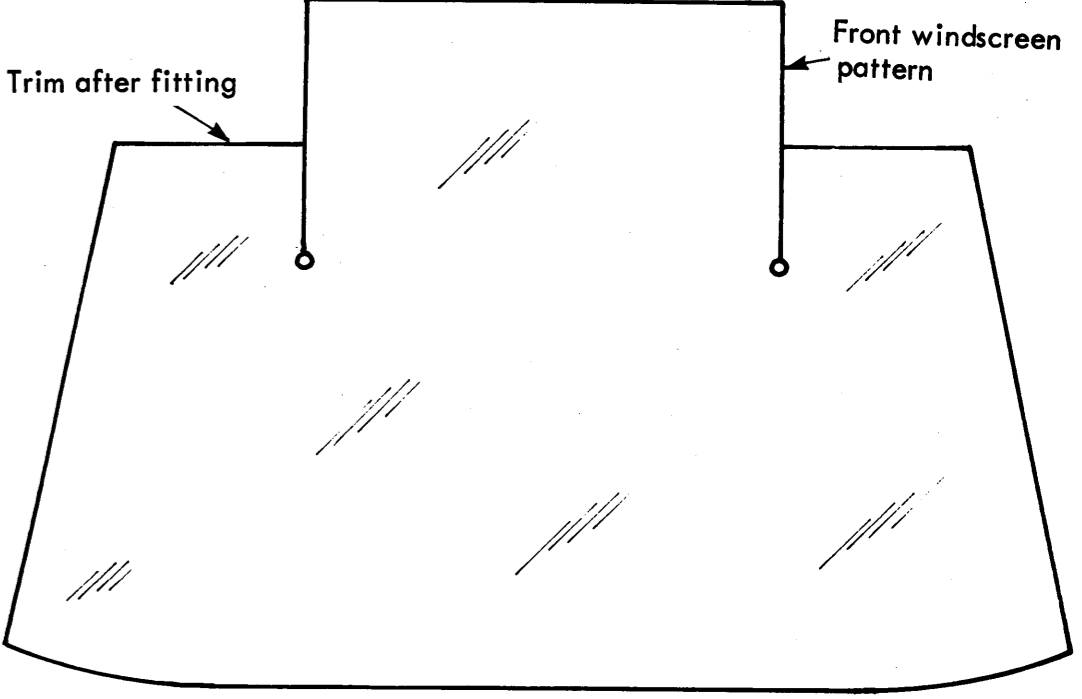
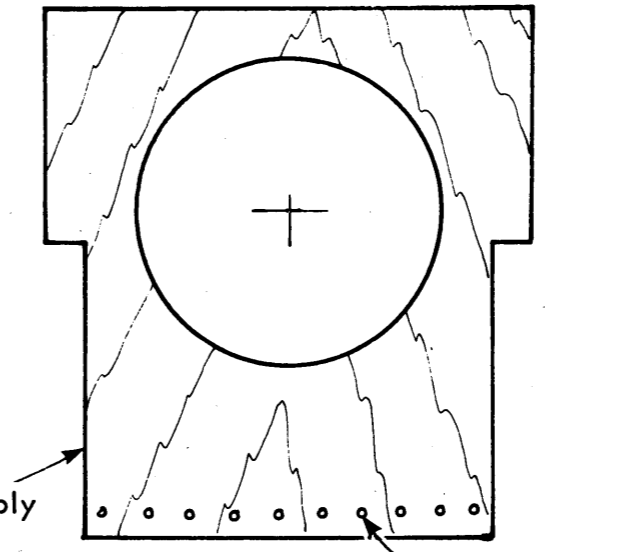
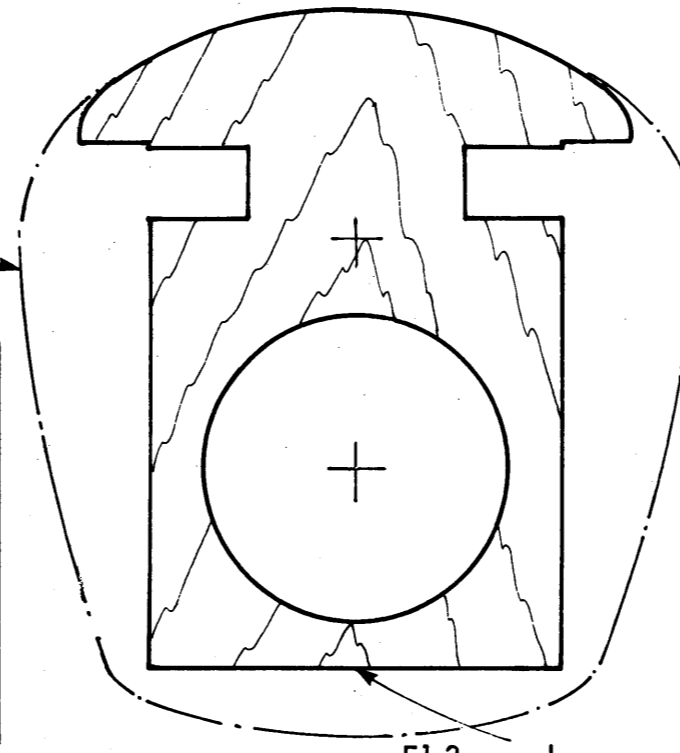
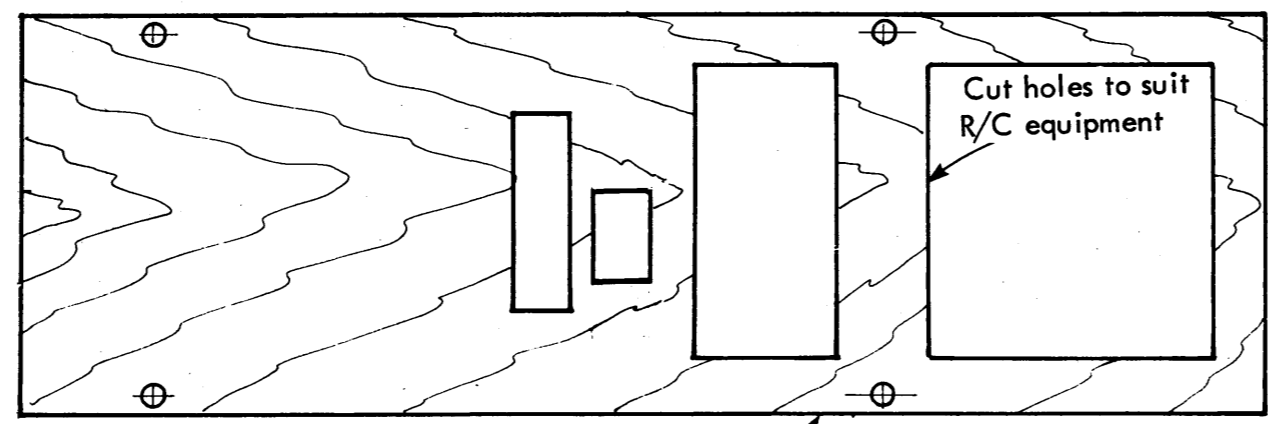
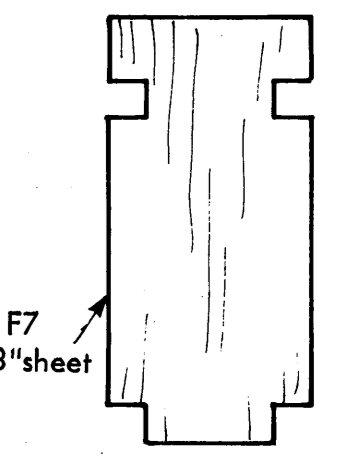
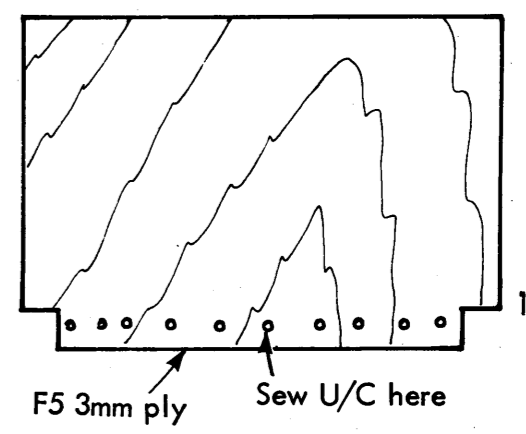
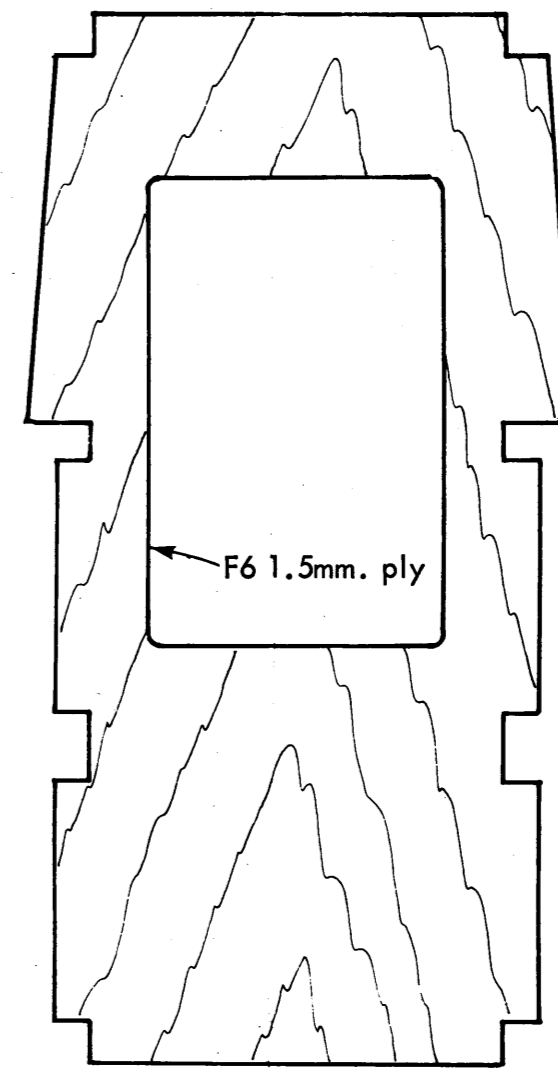
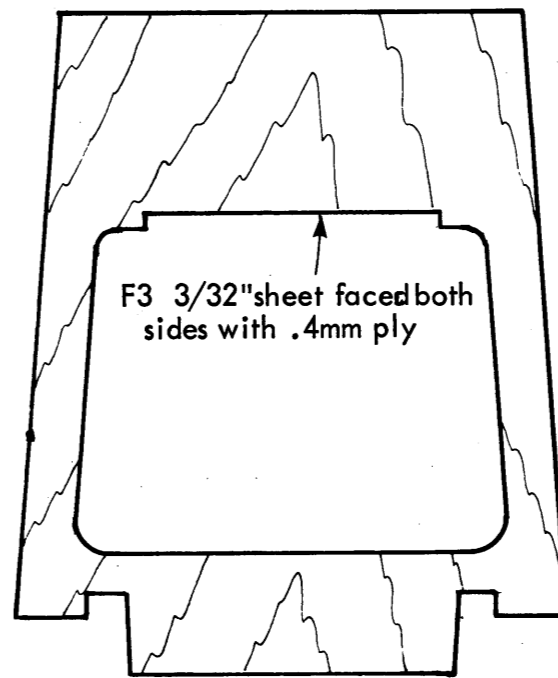
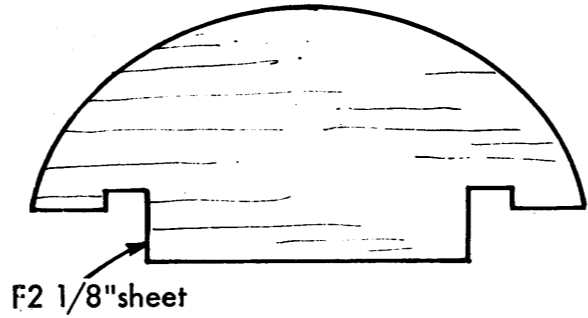
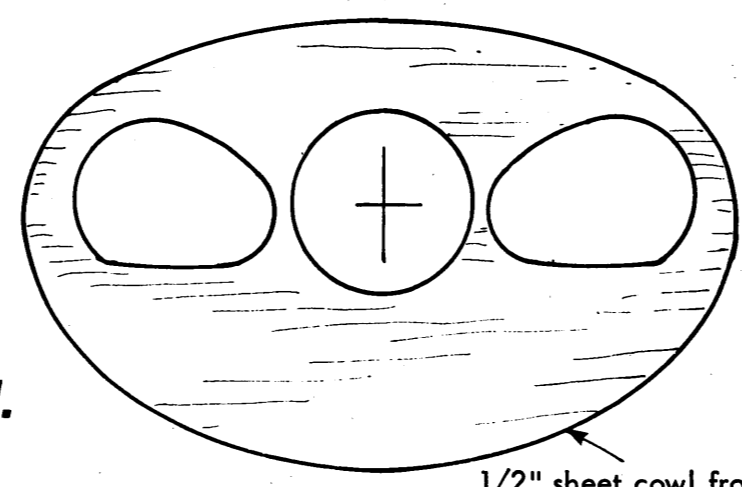
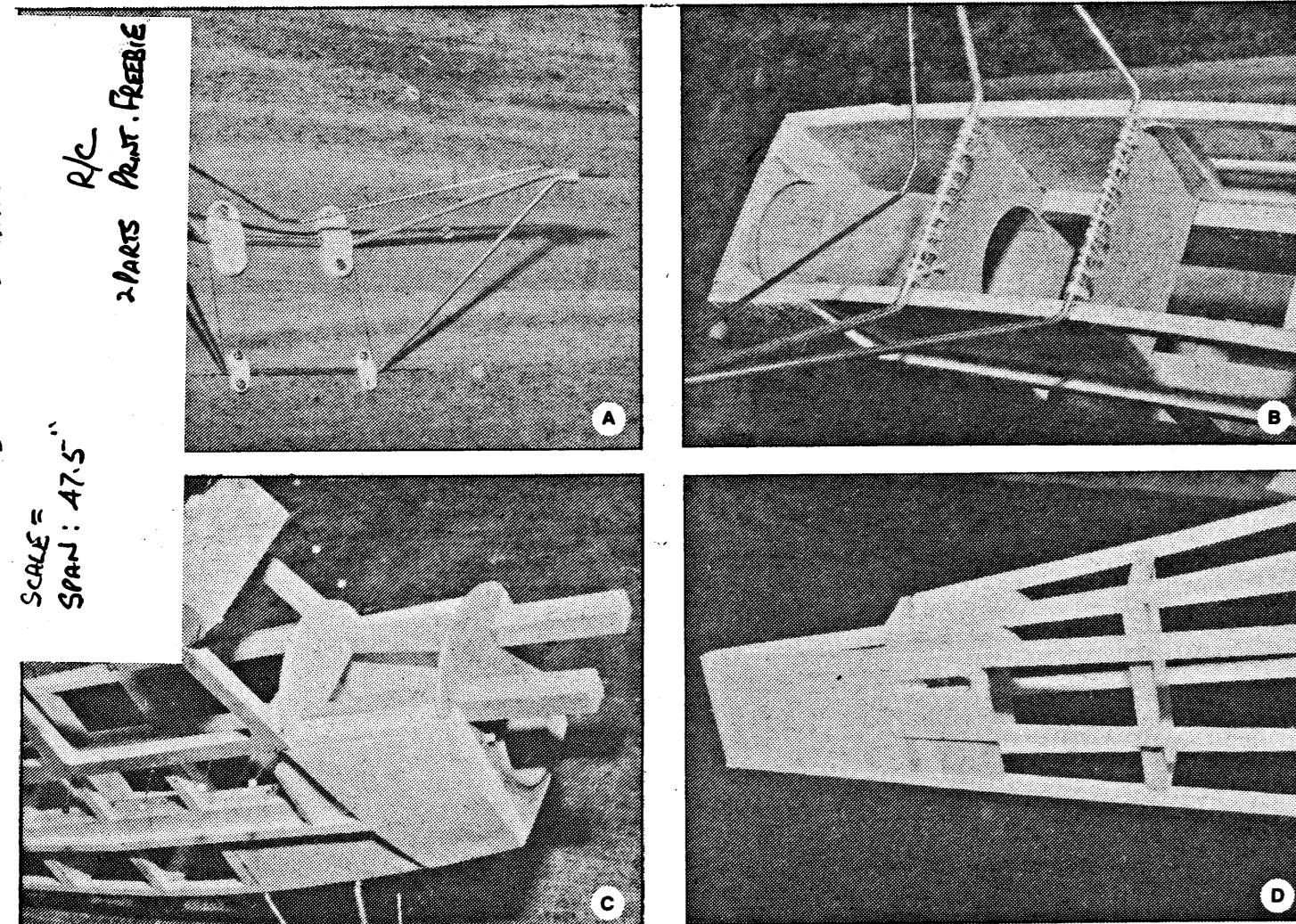
RM Flight Training Course

Porterfield 'Collegiate' Sports Scale model for three function radio control.

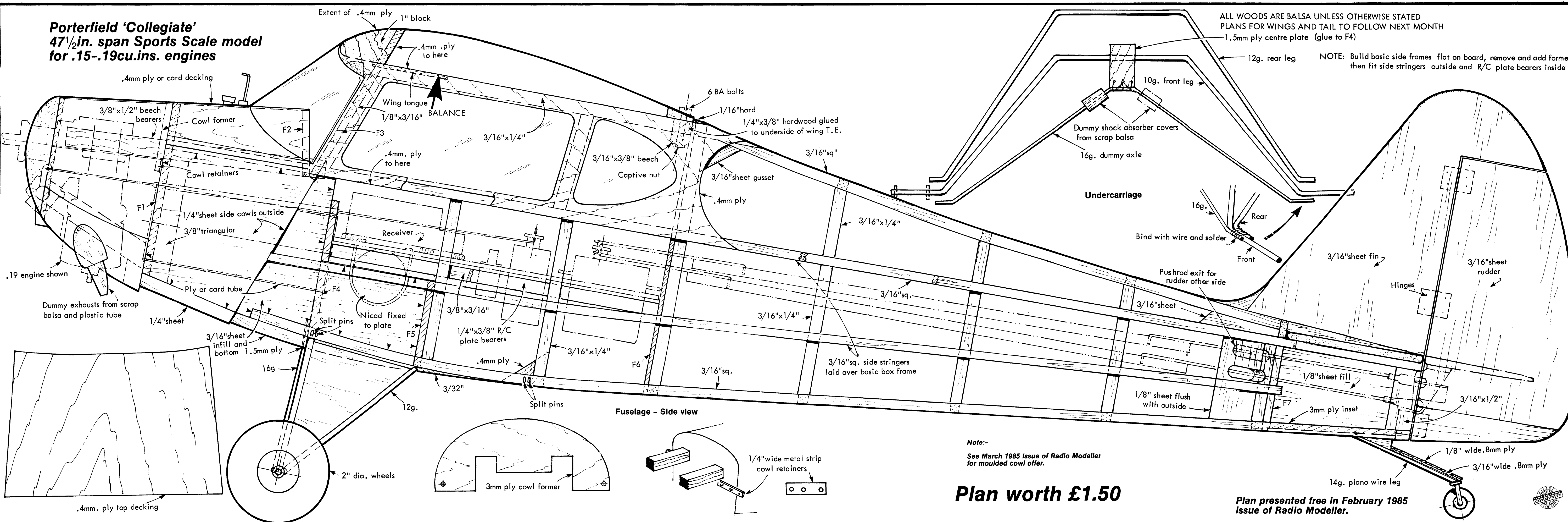
PORTERFIELD'S 'COLLEGIATE'

SCALE = 47.5"

R/C PARTS FROM FREEBIE



Porterfield 'Collegiate'
47 1/2 in. span Sports Scale model
for .15-.19 cu. ins. engines



ALL WOODS ARE BALSA UNLESS OTHERWISE STATED
 PLANS FOR WINGS AND TAIL TO FOLLOW NEXT MONTH

NOTE: Build basic side frames flat on board, remove and add formers then fit side stringers outside and R/C plate bearers inside

Note:-
 See March 1985 issue of Radio Modeller for moulded cowl offer.

Plan worth £1.50

Plan presented free in February 1985 issue of Radio Modeller.

