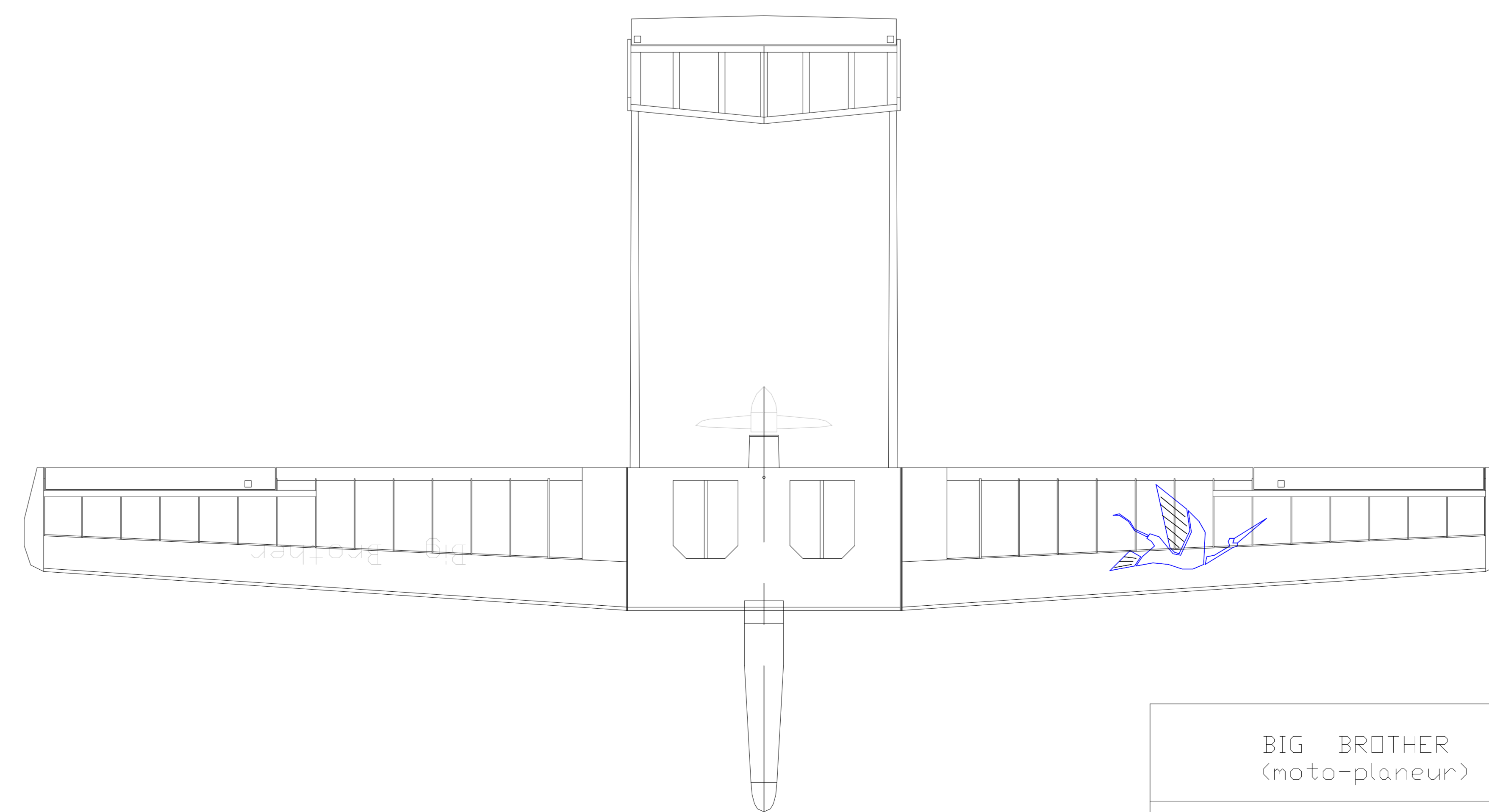
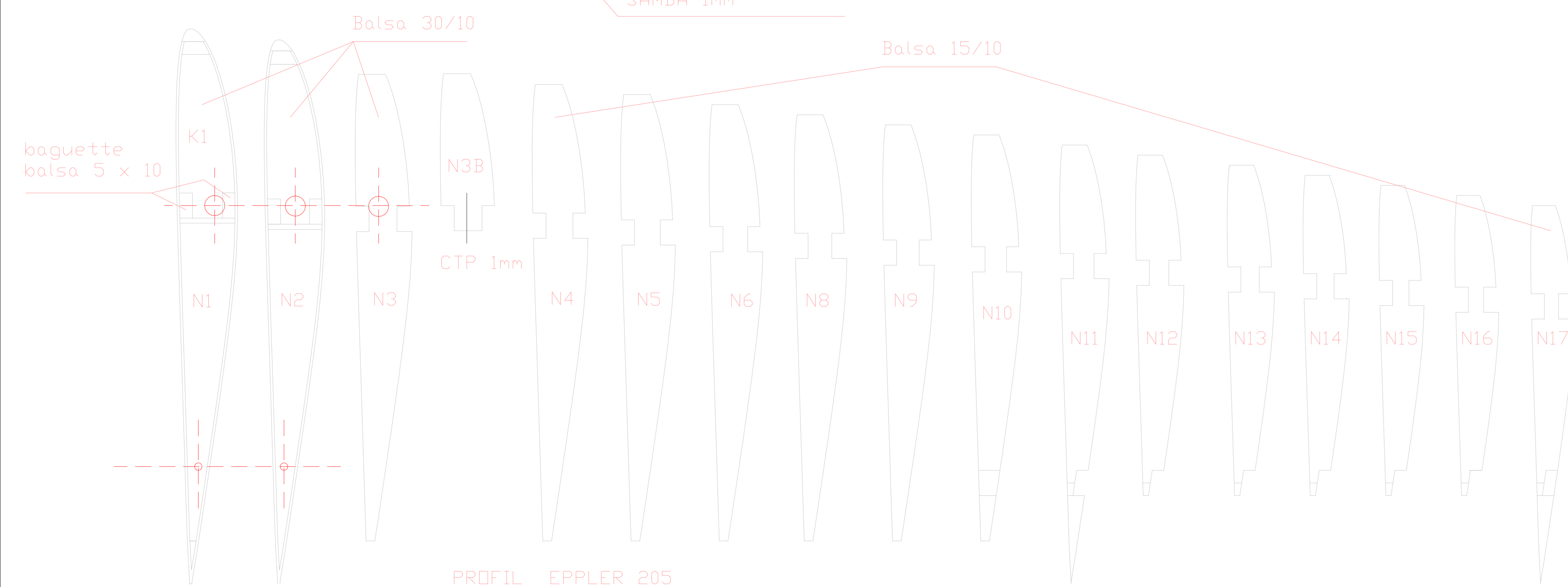
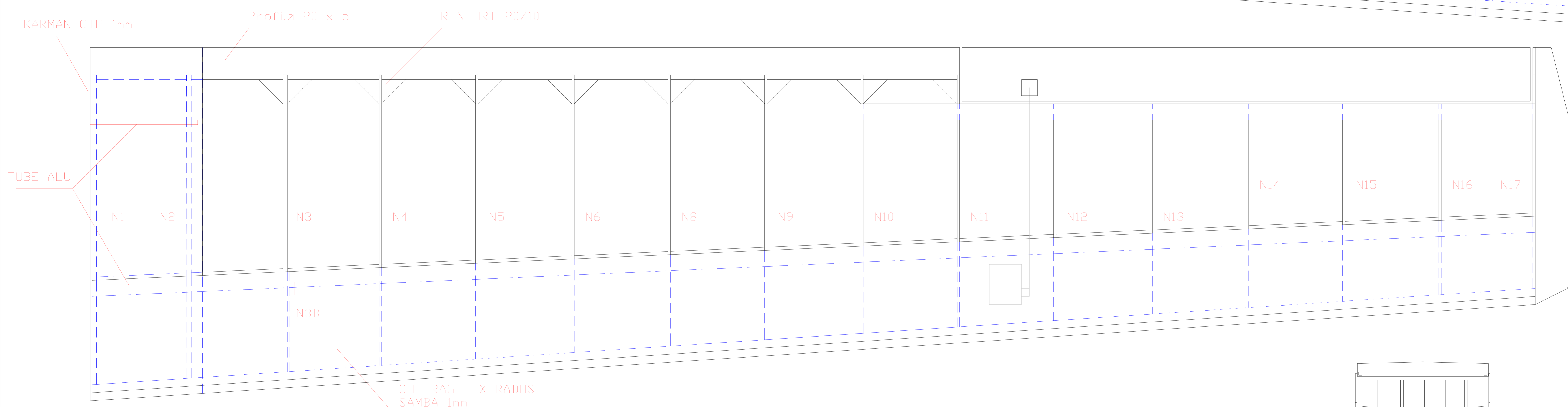
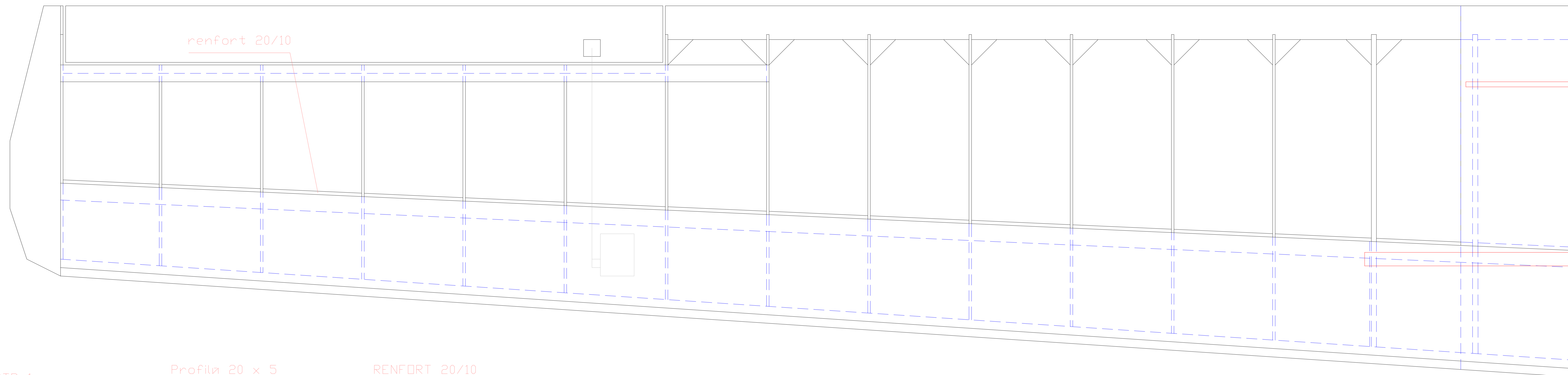


ENVERGURE: 2300 mm POIDS: 1,650 Kg SURFACE AILAIRE: 44 dm ² CHARGE AILAIRE: 37,5 g/dm ²	BIG BROTHER (moto-planeur) par Philippe TECHER 2 Avril 1996	PLANCHE 1/2
--	--	-------------



BIG BROTHER
(moto-planeur)

par Philippe TECHER
2 Avril 1996