

796

Balsa 5x5

Pin 6x6

Balsa 2mm

Balsa 12x5

Coffrage Balsa 15/10

Balsa 6x6

Pin 6x6

C.T.P. 3mm

Balsa 6x6

Balsa 20x6

250

Clé d'ailes C.T.P. 3mm

Balsa 5x5

C.T.P. 1mm

Coffrage 1.5 mm

2.39°

Balsa 5x5

Balsa 15x5

Bois dur 5x5

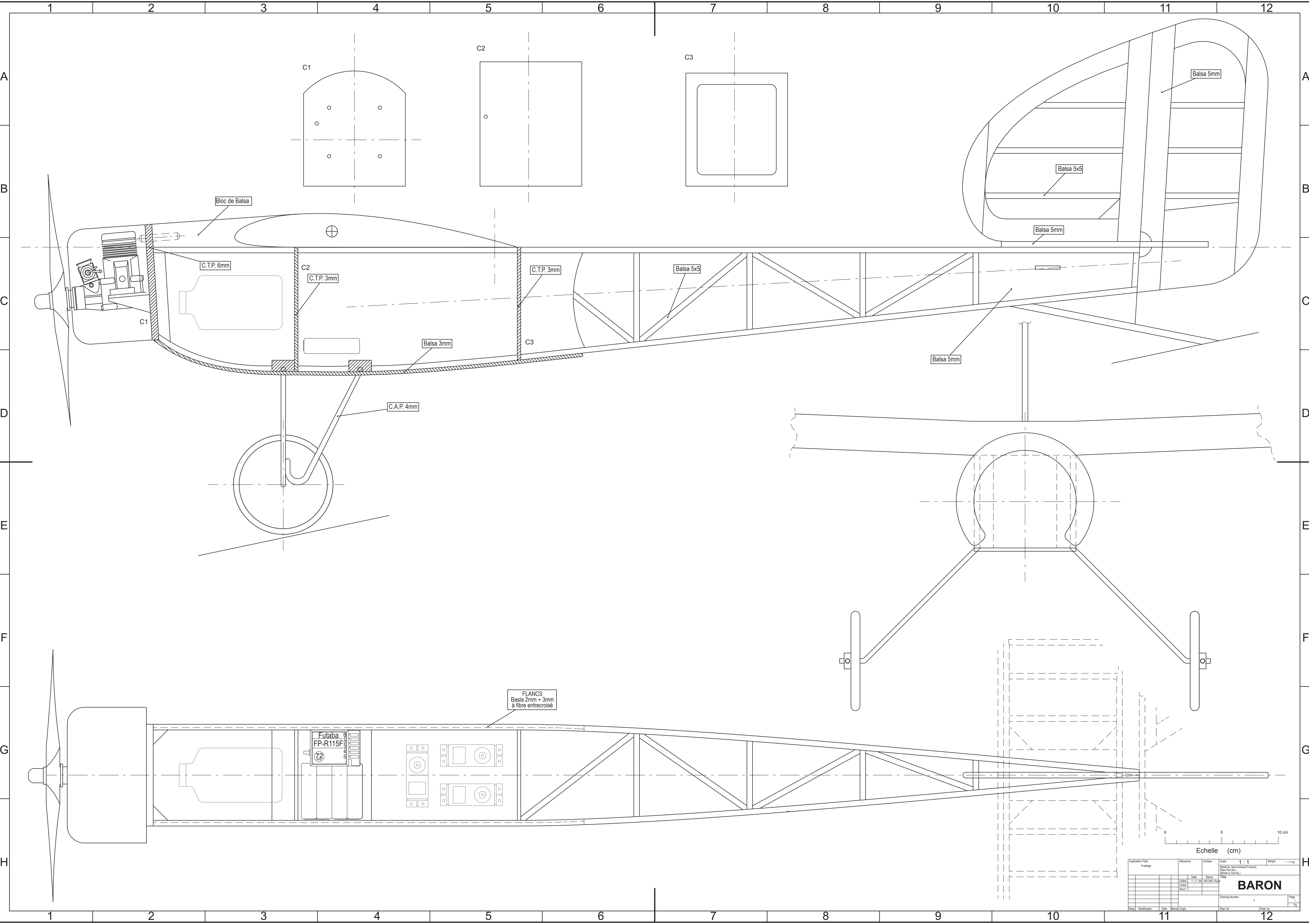
185

610

0 5 10 cm

Echelle (cm)

Application Field 12 Aile Profondeur	Allowance	Surface	Scale 1 : 1	Weight - 1.7 kg
Title (Material, Semi-finished Product) (Raw Part No.) (Model or Die No.)			<h1 style="text-align: center;">BARON</h1>	
Edited	Date	Name		
Check	7 / 3 / 99	NEGRE Renaud		
Norm				
Drawing Number 1			Page 1	Pg.
Resp.	Modification	Date	Name	Origin
				Repl. for
				Repl. by



Bloc de Balsa

C.T.P. 6mm

C.T.P. 3mm

C.T.P. 3mm

Balsa 3mm

C.A.P. 4mm

Balsa 5x5

Balsa 5mm

Balsa 5x5

Balsa 5mm

Balsa 5mm

FLANCS
Balsa 2mm + 3mm
à fibre entrecroisé

Fulaba
FP-R115F

Echelle (cm)

Application Fact	Allowance	Surface	Scale	Weight
Fuselage			1 : 1	- 1.7 kg
<small>(Standard: Semi-Finished Product) (Model of the No.)</small>				
Date	Name	Type		
Edité	7/3/00	FP		
Check				
Norm				
Drawing Number				Page
2				2
Revisé	Modification	Date	Revisé	Origine

BARON