

# AEROFLYTE Sand-piper

KIT No 301

Sandpiper is an attractive model that is fun to build and fly. If built step by step from the plan this model will give you many hours of enjoyment.

**GENERAL BUILDING NOTES:** Before you begin building it is important to look at the plan carefully, reading and understanding the instructions before starting assembly. A good flat building board will enable you to build quickly and squarely. As needed remove each piece from its balsawood sheet with the help of a sharp pointed hobby knife.

When building remember the magic word is "lightness"! The model must be built "straight". Wings, tailplane, and rudder should be flat, without twists. Viewed from the top, one wing tip should be no further forward than the other. As seen from the rear, the tailplane should not be tilted in relation to the wing.

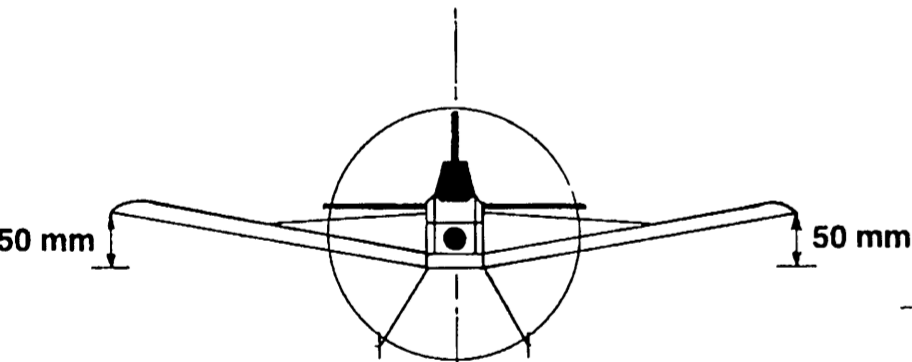
**STAGE ONE:** Tape the plan to a flat building board. Place the two fuselage sides 1 together and drill 3 mm diameter holes where pin marked. Lay one fuselage side 1 over the plan. Locate the positions of formers 2, 3, 4, 5 and 6, (former 6 is glued to the top and rear of former 5) and glue in position making sure they are square and straight whilst drying. Use masking tape or pins to hold parts in position. When dry place the assembly over the top plan view. Glue the left fuselage side 1 in position, hold with masking tape until dry. The remaining former 7 and dowel doubler 1A are glued in position. Tape and glue the tail together making sure the fuselage is symmetrical to the centre line.

Glue top sheeting 8 and 9 in position. The side sheeting 10 must be carefully chamfered on each edge to fit between the top sheeting 8 and the fuselage sides 1 as shown in section "A" (take your time using a sanding block to chamfer the edges a little at a time until they fit). Glue parts 10 in position. Slightly sand all edges of the tailplane 11, then glue the tailplane in position making sure it is square to the fuselage (see wing and tailplane alignment diagram). When dry, chamfer and glue parts 12 in position (similar to parts 10).

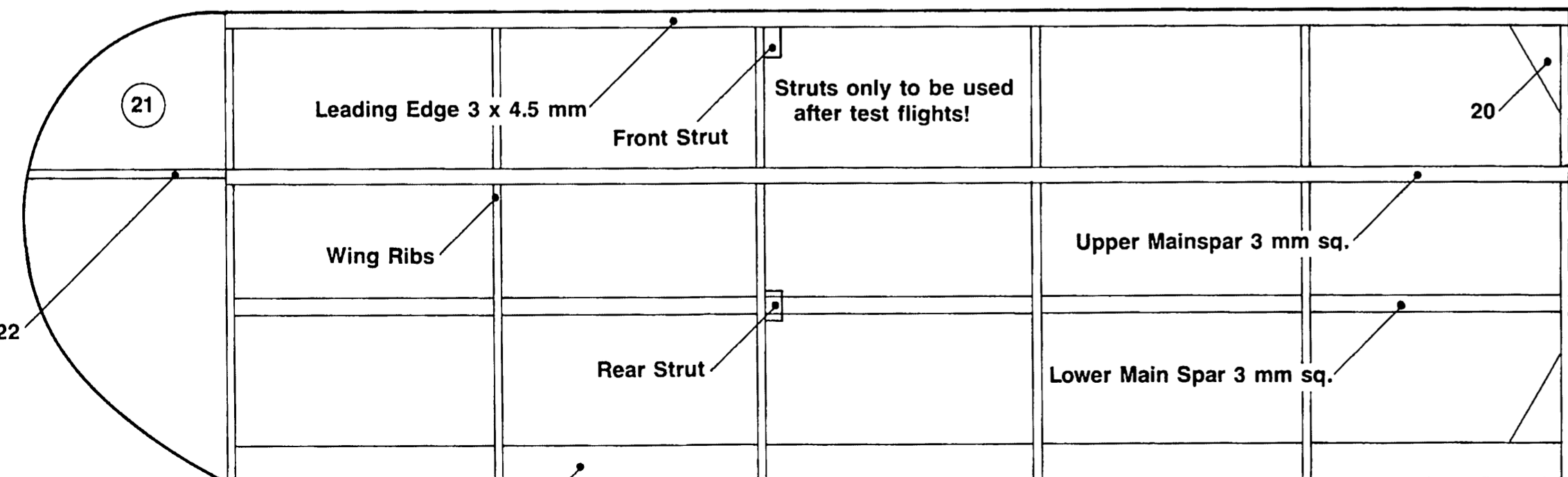
Slightly shape the top block and bottom blocks and glue in position. Sand blocks flush with the front of model. The pre-drilled front nose block is a removable block (used at a later stage for trimming the finished model). Pin parts 15 and 16 to the back of the nose block and check fit to the fuselage, adjust position of 15 and 16 until the nose block is flush with fuselage sides, then glue 15 and 16 to the nose block. Sand top, nose and bottom blocks to shape shown in top and side views. Shape and fit the air intake block. Bend and cut the undercarriage wire to shape using the plan template as a guide. Glue the parts 17, 18 and the bent undercarriage to the front of former 4. Then place and glue part 19 over the assembly and clamp to dry.

The 1.5 mm cross grain bottom sheeting is then glued in place. When dry trim and sand sheeting flush to the fuselage sides. (NOTE: Leave fuselage open as shown for access to the rubber band.) Lightly sand the edges of the fin parts 13 and 14 then glue in place on the model, making sure they line up with the centre line of the model. Cut to length all 3 mm dowels as shown on the plan. Only glue the wing dowels in place.

**STAGE TWO:** Cut to length and pin the 3 x 4.5 mm leading edge and 2.4 x 7 mm trailing edge over the left hand wing plan. Cut and pin the 3 mm square lower mainspar in place. Pin and glue all wing ribs in position using the wing template WT for the correct angle of the inside rib. Cut to length and glue the 3 mm square upper mainspar in position. Glue wing gussets 20, wing tip 21 and wing tip gusset 22 in position and leave until dry. Build right hand wing in same manner.

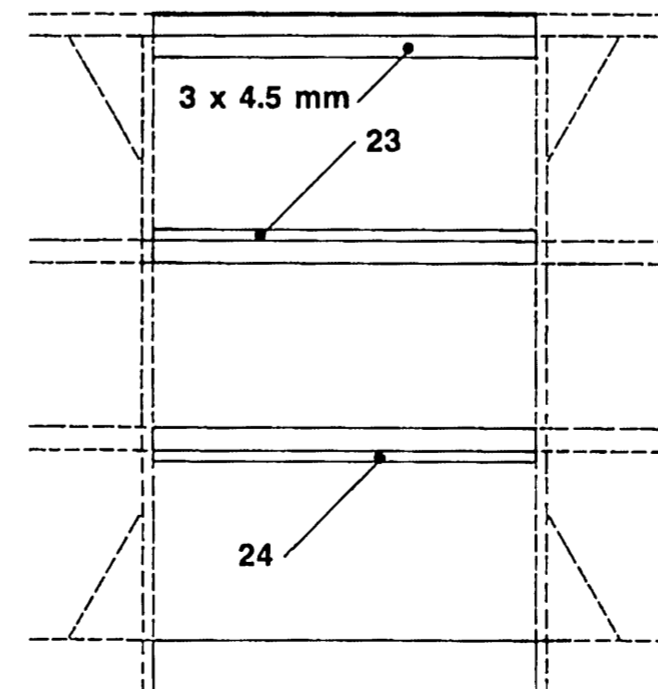


WING AND TAILPLANE ALIGNMENT DIAGRAM

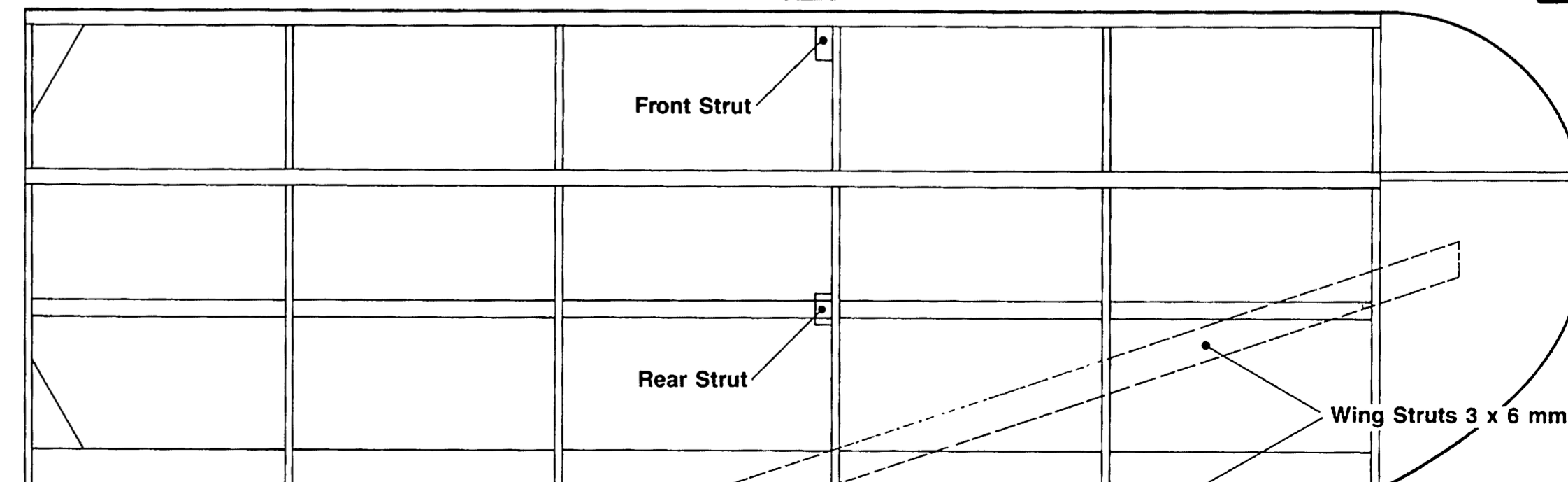


Trailing Edge 2.4 x 7 mm

LEFT HAND WING

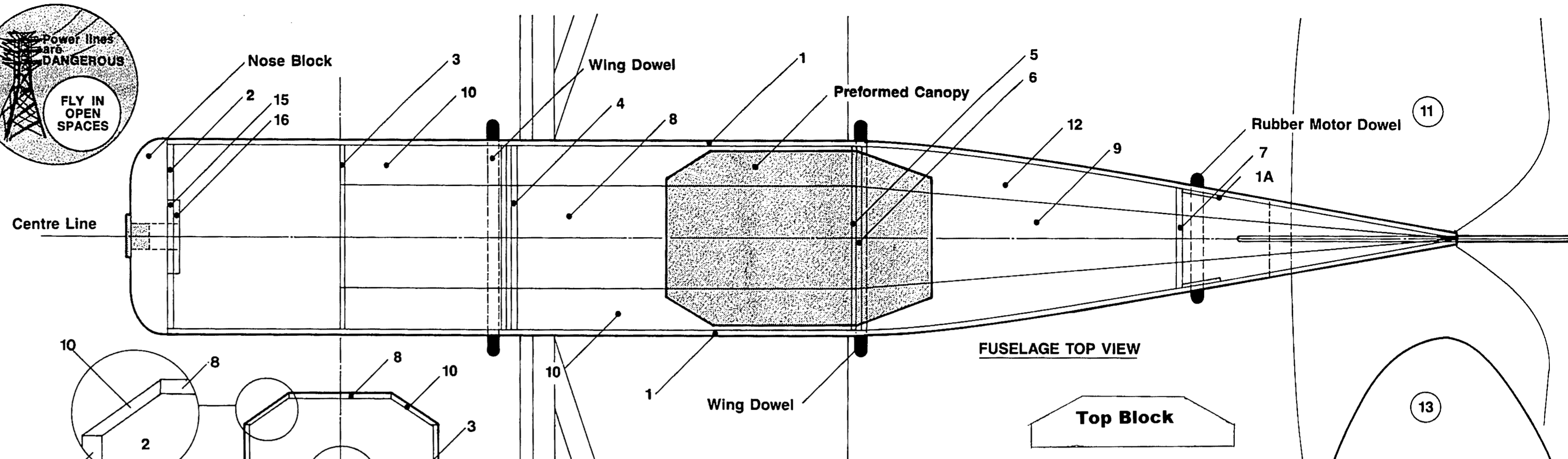
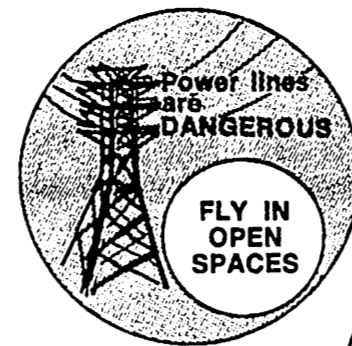


CENTRE SECTION

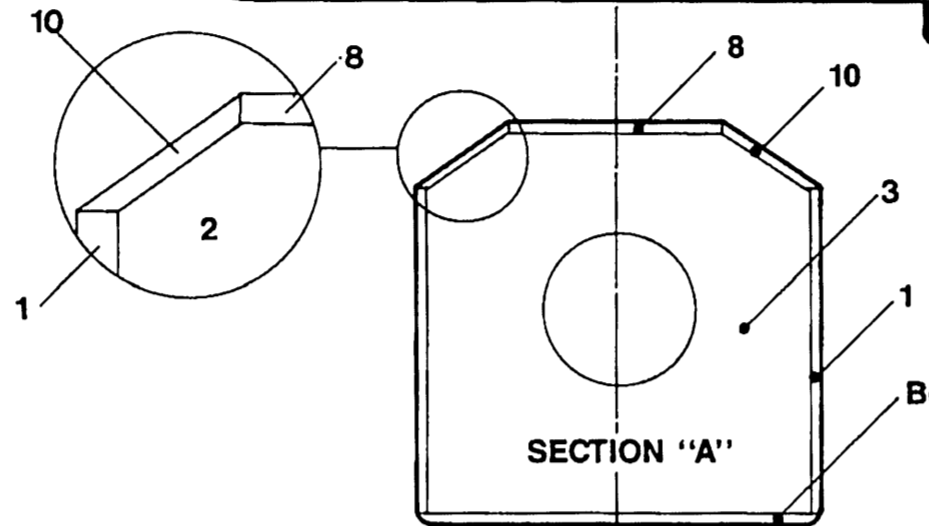


RIGHT HAND WING

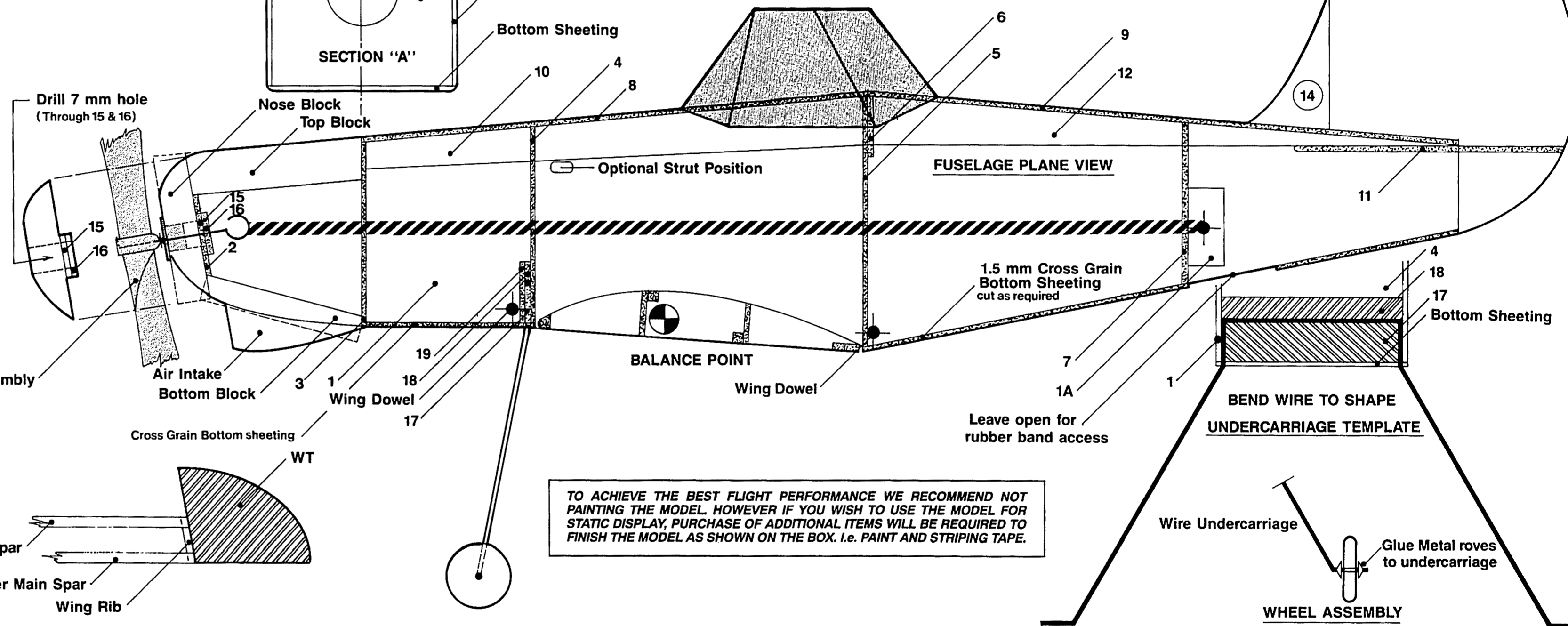
WING STRUT TEMPLATE (TWO ASSEMBLIES REQUIRED)



FUSELAGE TOP VIEW



SECTION "A"



FUSELAGE PLANE VIEW

TO ACHIEVE THE BEST FLIGHT PERFORMANCE WE RECOMMEND NOT PAINTING THE MODEL. HOWEVER IF YOU WISH TO USE THE MODEL FOR STATIC DISPLAY, PURCHASE OF ADDITIONAL ITEMS WILL BE REQUIRED TO FINISH THE MODEL AS SHOWN ON THE BOX. I.e. PAINT AND STRIPING TAPE.