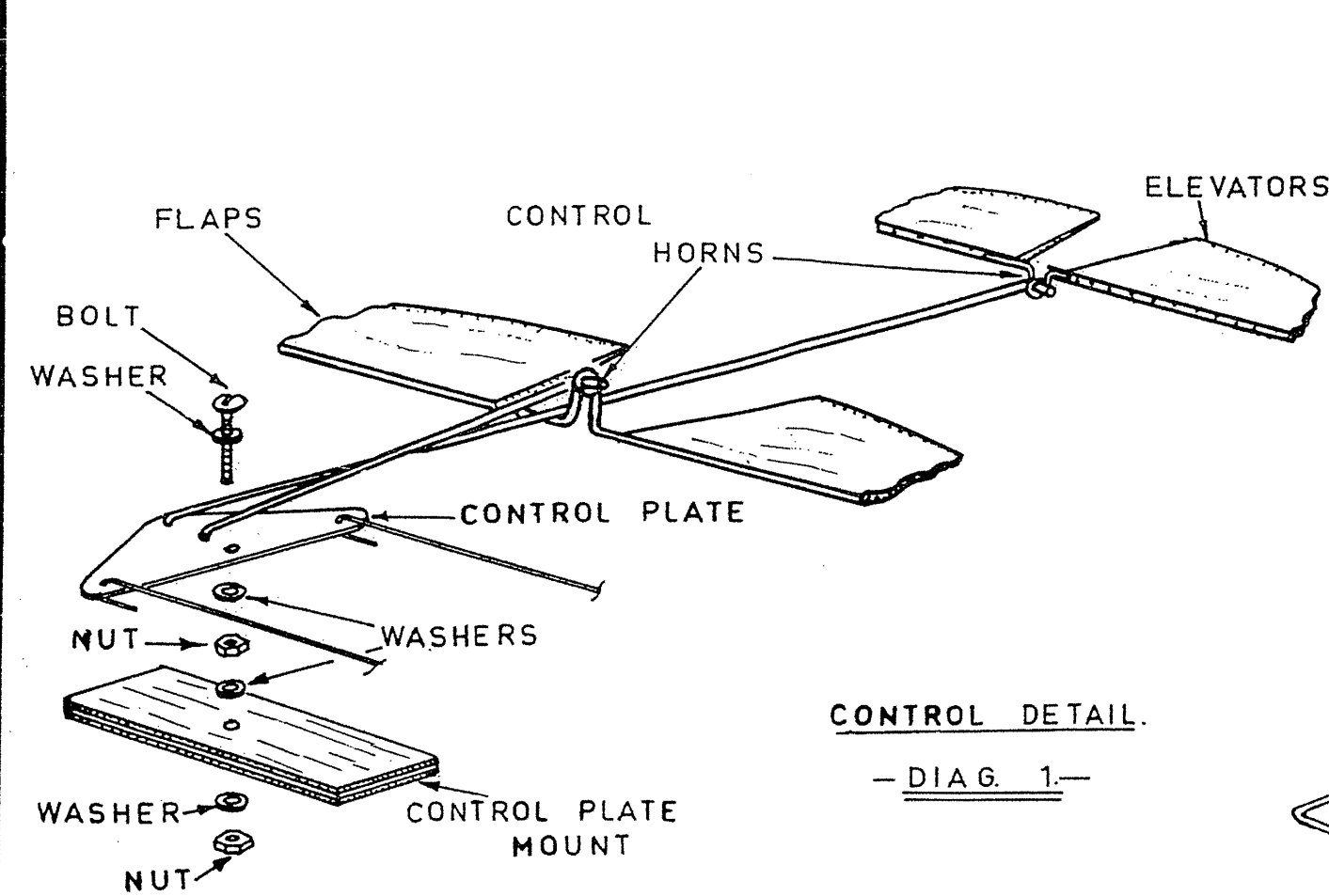


KITTYHAWK

36" SEMI-SCALE STUNT MODEL FOR ALL MOTORS OF 1.5 C.C. TO 25 C.C. CAPACITY.

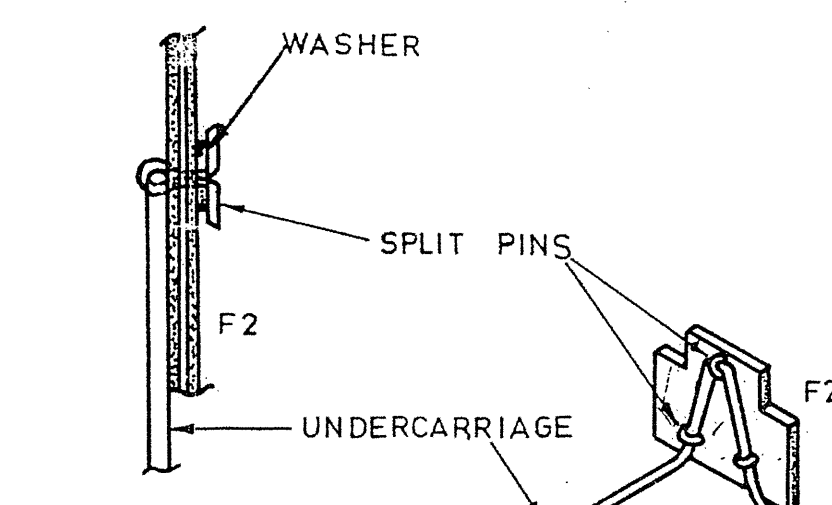
MANUFACTURED BY SOUTHERN MODEL SUPPLIES LTD.

DRAWN - R. DUANCE.

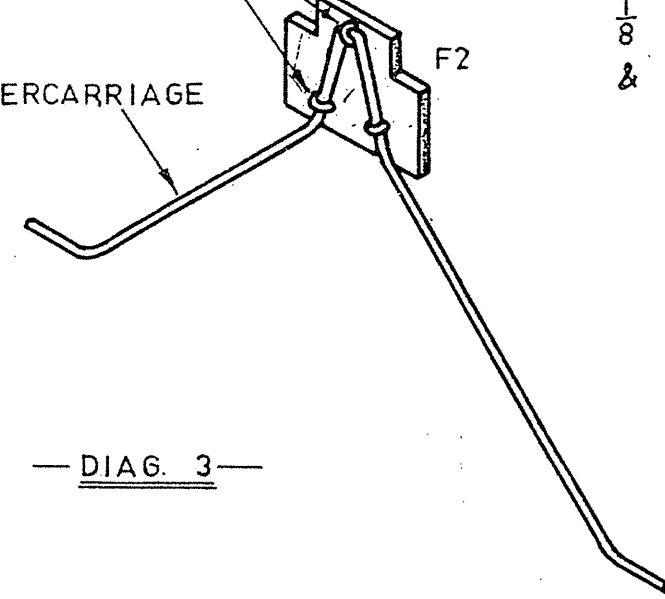


CONTROL DETAIL

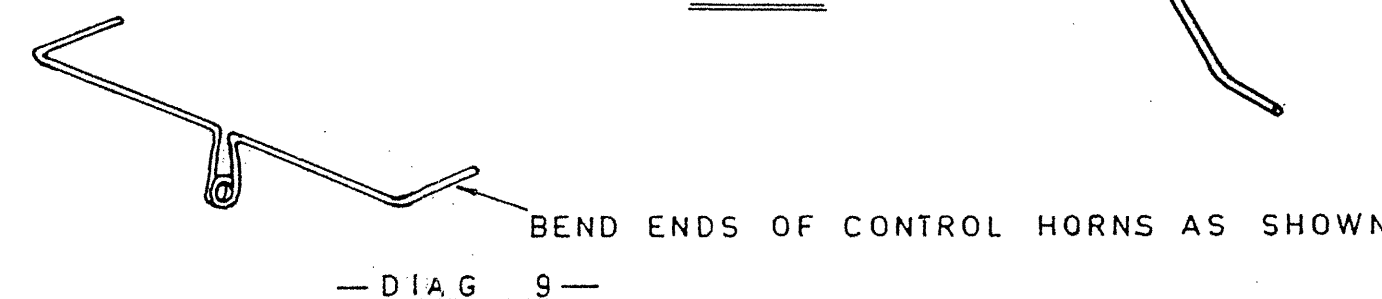
DIAG. 1



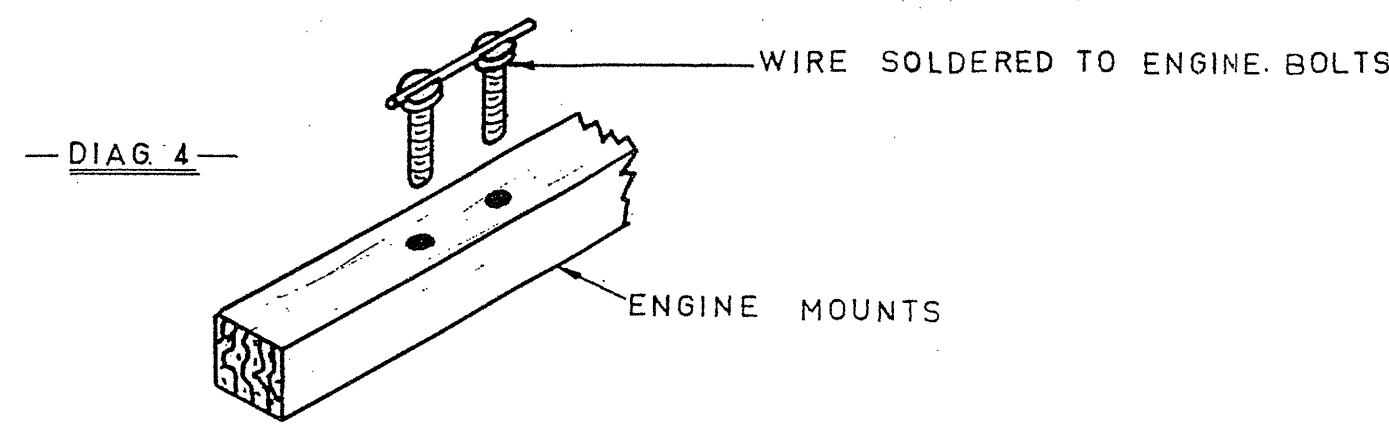
DIAG. 2



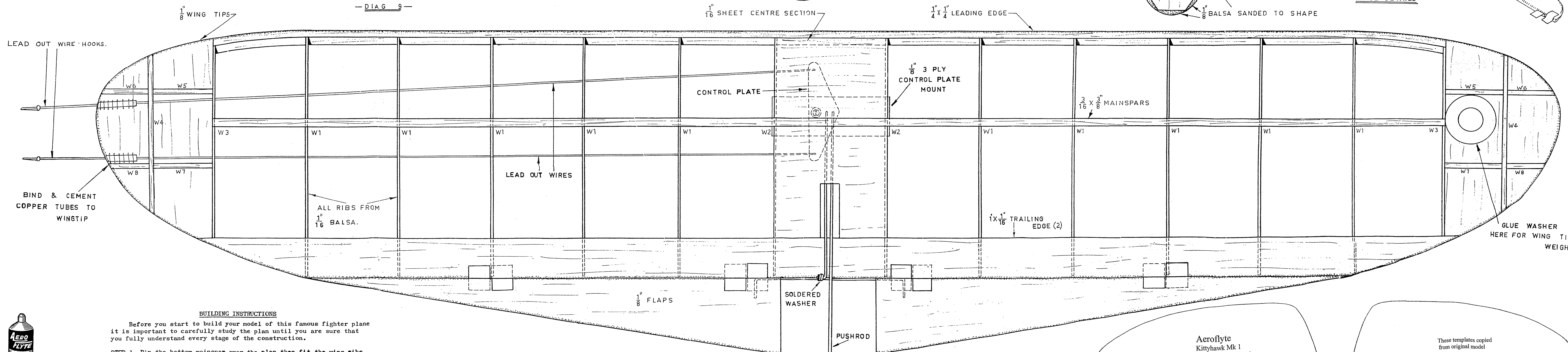
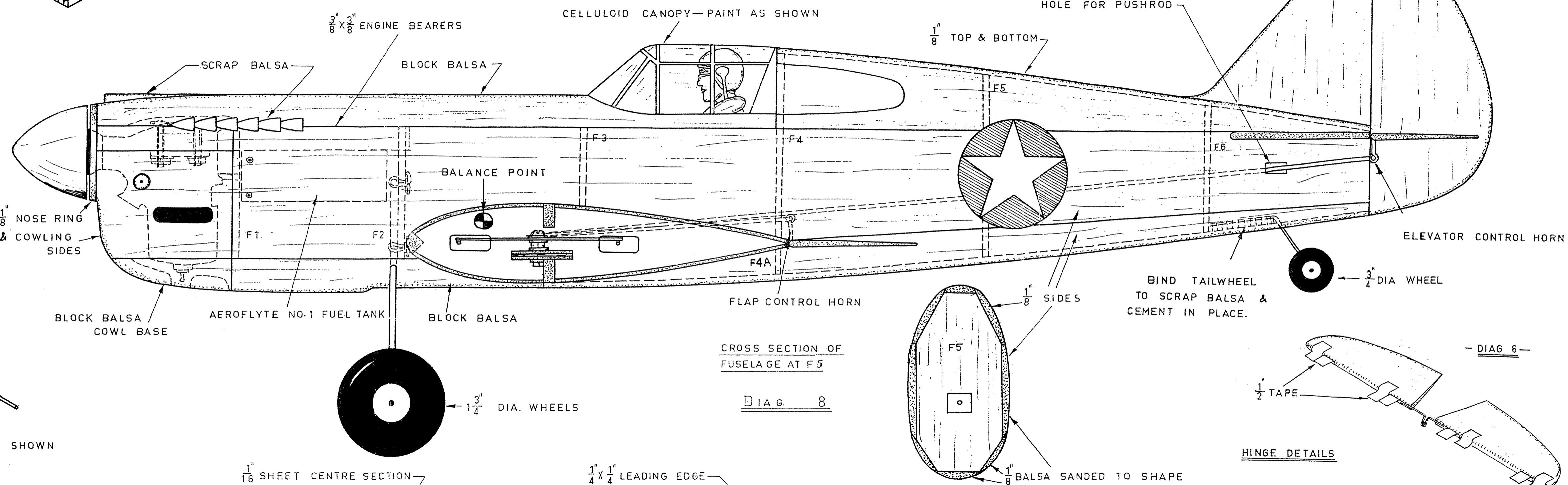
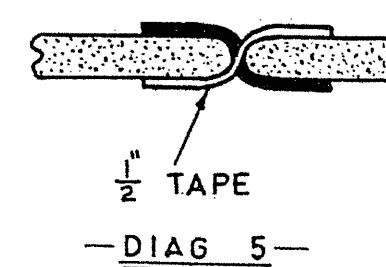
DIAG. 3



DIAG. 9



DIAG. 4



BUILDING INSTRUCTIONS

Before you start to build your model of this famous fighter plane it is important to carefully study the plan until you are sure that you fully understand every stage of the construction.

STEP 1 Pin the bottom main spar over the plan then fit the wing ribs into place on this spar, making sure that the W1, W2 and W3 ribs are in their correct places. Cement all joints then pin the leading edge, bottom trailing edge, top main spar and top trailing edge into place and cement all joints.

Allow to dry before removing from the plan then cement the wing tips and gussets W5 - W8 and the plywood control plate mount into place. Next fit the control plate with the lead out wires and push rod wires already attached (see diag. 1) making sure that the bolt is tight on the control plate mount and that the control plate is free to move on the bolt. Now attach the wing flaps with tape hinges (see diag. 5), fit the wire control horn (diag. 9) and attach the short pushrod wire. Make sure that with the control plate in the neutral position the flaps are level. Complete the wings by adding the wing tip weight and sheet centre section top and bottom.

STEP 2 Fit the ready formed undercarriage to former F2 as detailed in diags. 2 and 3 then cement F1 and F2 to the engine bearers placing the fuel tank into place at the same time. When dry fit the engine (see diag. 4) and then cement this assembly to the two fuselage sides. The next part of the construction is to fit the wings to the fuselage and it is important to do this accurately. Cut a slot near the rear of the left hand fuselage side for the pushrod as shown, then thread the pushrod through F5 and F6 and through this slot. Now place the wing in position at the bottom of the fuselage, check for square and cement firmly into place. Formers F3 - F6 can now be cemented into place the elevators and wire horn fitted with tape hinges to the tailplane and the tailplane then cemented to the fuselage. With the flaps held level bend the end of the pushrod and place through the wire horn and check the controls for free movement throughout. It is most important that the elevators move freely up and down at least 30 degrees.

STEP 3 Complete the construction by fitting the top and bottom sheet sides the block top and bottom, the rudder R1 and R2, canopy, cowl and tailwheel. Sandpaper the entire model to a smooth finish all over then cover with the tissue supplied and give three or four coats of Aero-Flyte model aircraft dope. Finish in the colours you choose with a good quality fuelproof paint.

The Kittyhawk, or Warhawk as it is sometimes known, was one of the most famous fighter planes of the Second World War. A total of 14,000 were produced over its six year production life and these saw duty in almost all theatres of the war, but their most famous successes were in the Western Desert, Middle East, Pacific Area and China.

The maximum speed of the Kittyhawk was 343 m.p.h. and it was armed with six .50 Browning machine guns with 281 rounds per gun.

