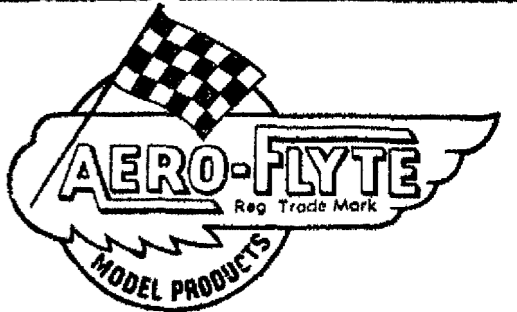


FURY

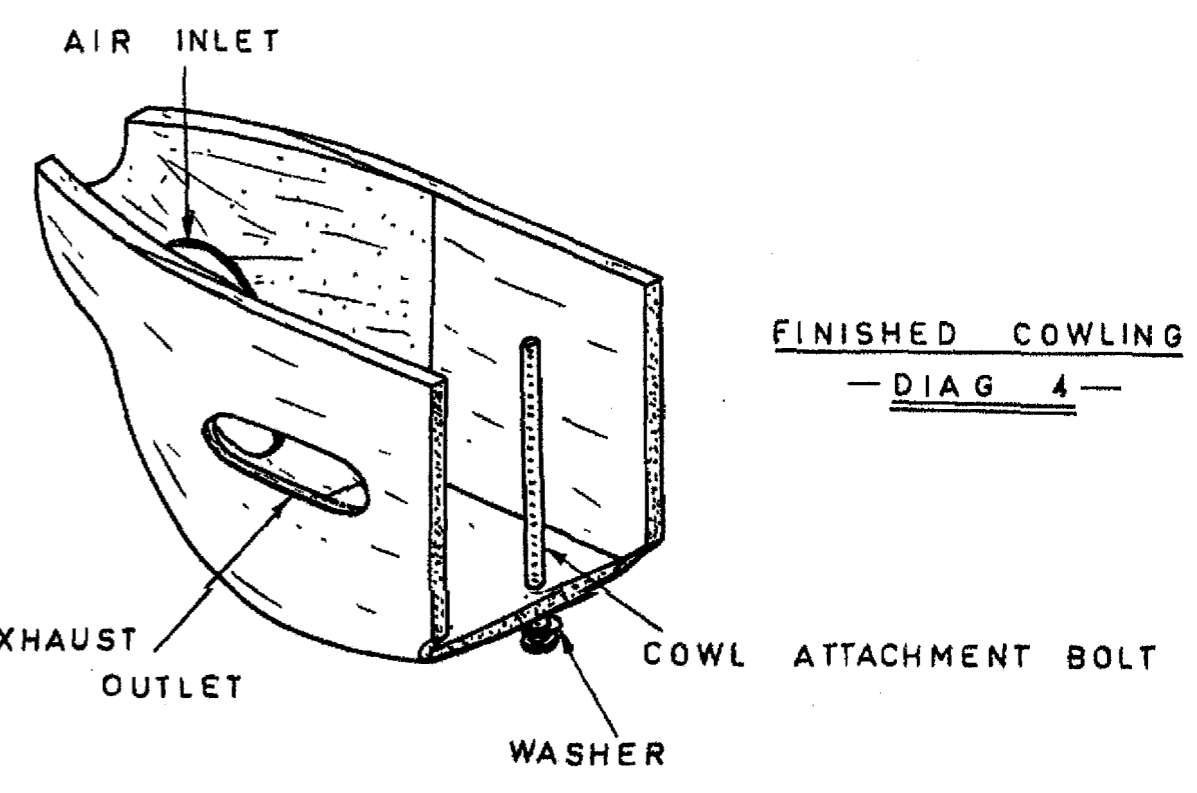
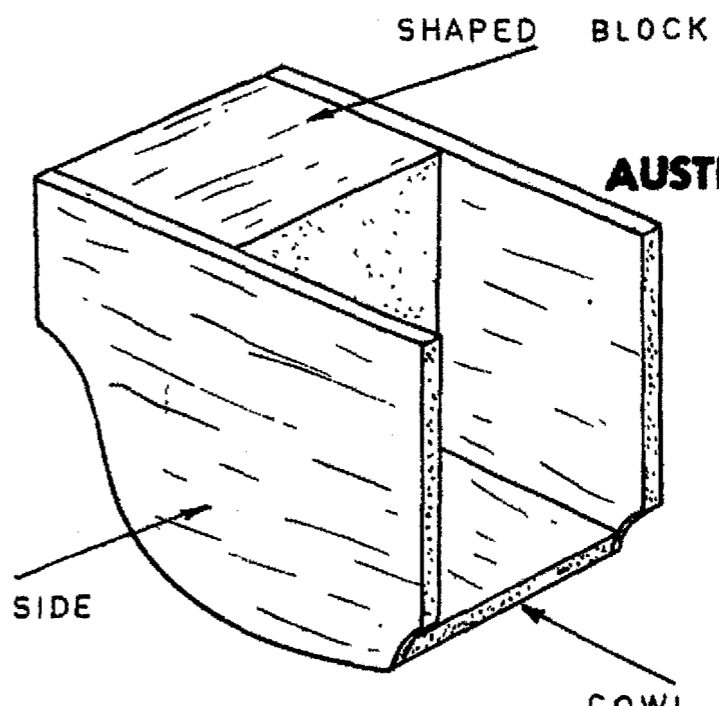
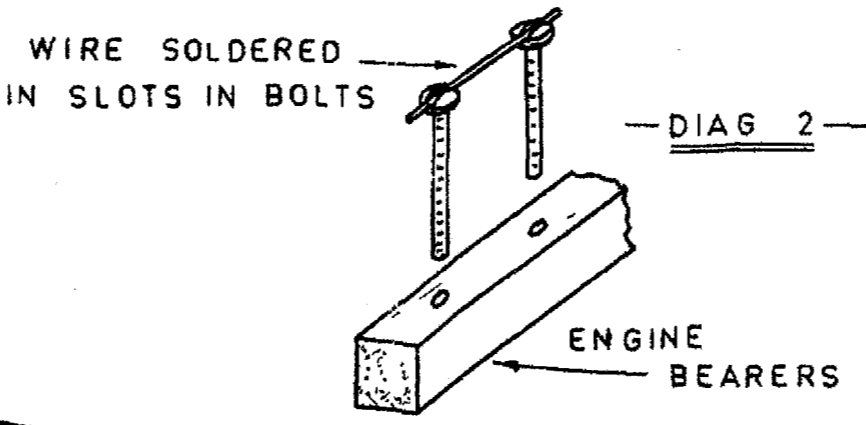
24 WINGSPAN 15CC. TO 25CC. TEAM RACER.
MANUFACTURED BY SOUTHERN MODEL SUPPLIES LTD.



AUSTRALIA'S GREATEST NAME
IN MODEL AIRCRAFT

ASSEMBLED
COWLING

- DIAG 3 -



BUILDING INSTRUCTIONS
Before beginning to build your Fury, study the plan carefully until all stages of construction are fully understood. For greatest strength and easiest building use Aero-Flyte Fast Drying Cement.

STEP 1
Mount the ready formed undercarriage on to plywood formers F1 (See diag. 1) then cement F1 and F2 to the engine bearers and set aside to dry.

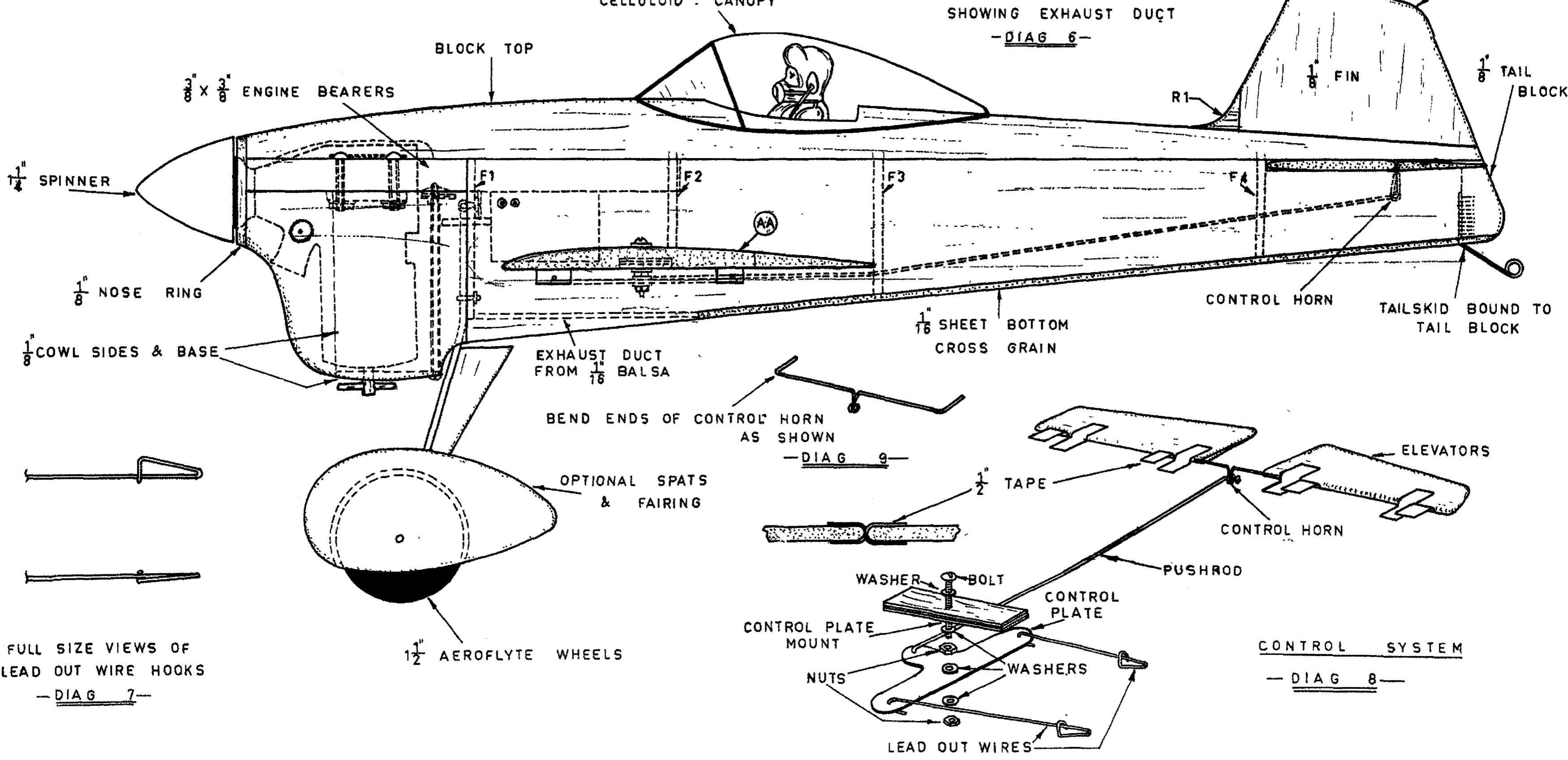
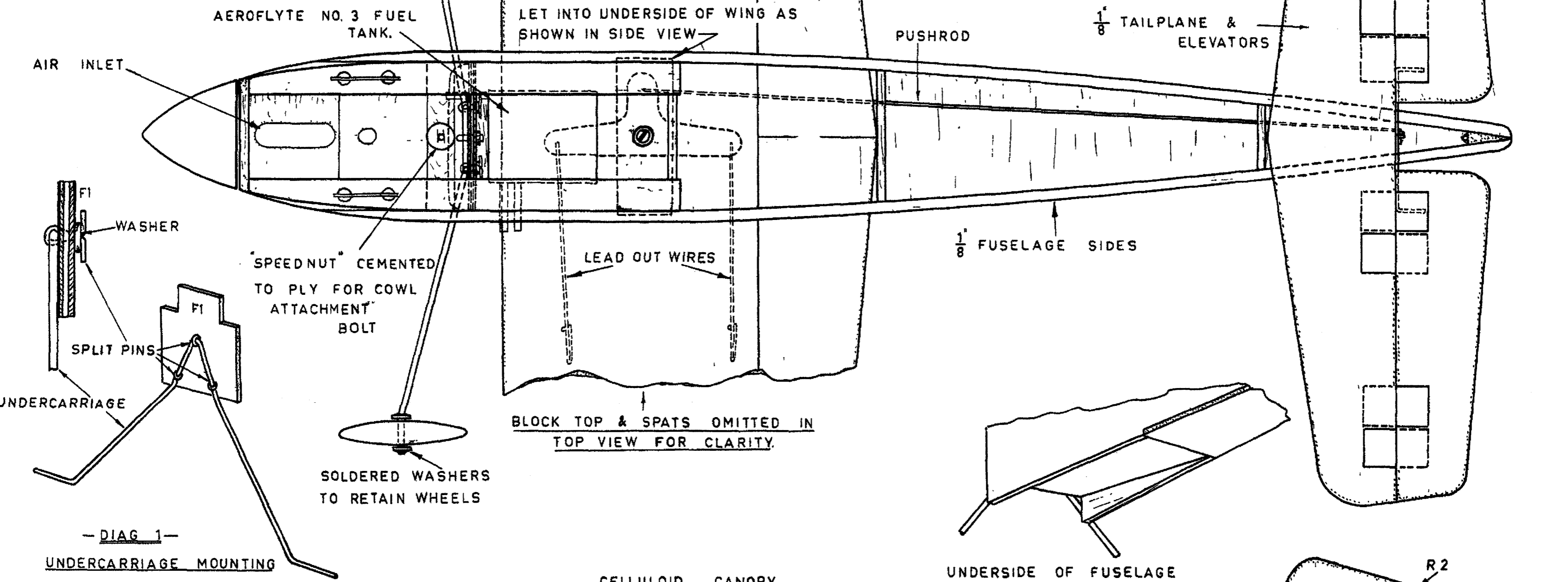
STEP 2
Cement the three 1/4" sheet parts of the wing together and sandpaper the wing to a smooth airfoil section as shown in view AA. Now go back to the motor mount assembly and drill four holes in the engine bearer to suit your motor, bolt the engine into place and solder a piece of wire across the top of the bolts (see diag. 2). Next cement the fuselage sides to the motor mount assembly, fitting formers F3 and F4 and the tail block at the same time. Hold the fuselage sides together with rubber bands until dry.

STEP 3
Slide the wing through the slots in the fuselage sides and cement it into place using plenty of cement to ensure a good joint. Attach the elevators to the tailplane with tape hinges (see diag. 8) fitting the wire control horn at the same time, then cement the tailplane to the fuselage sides. Now fit the control plate and pushrod wire as shown in diagrams 7 and 8 making sure that the bolt is tight on the wing but that control plate moves freely on the bolt. Check that the elevators are free to move at least 30 degrees up and 20 degrees down, fit the fuel tank in place and then cement the block top, 1/16" sheet bottom, fin and canopy into place.

STEP 4
Make up the engine cowling as shown in diag. 3 cement the piece of ply and speed nut across the front of the fuselage and bolt the cowling into place. Complete construction by cementing the 1/8" ply line guide beneath the inside wing, cementing the weight washer to the outside wing and fitting wheels onto the axles of the ready formed undercarriage.

STEP 5
Sandpaper the entire airframe to a smooth finish all over and apply three coats of Aero-Flyte dope. Paint the model in the desired colours using good fuelproof paint. For added strength the model can be covered in light weight tissue before painting.

FLYING
The Fury is a high performance model having won numerous National and State Championships and it flies very smoothly and easily. Use full UP elevator for take off leveling off to NEUTRAL once the plane is airborne. Use gentle arm movements at all times to prevent jerky flying.



FULL SIZE VIEWS OF
LEAD OUT WIRE HOOKS
- DIAG 7 -

