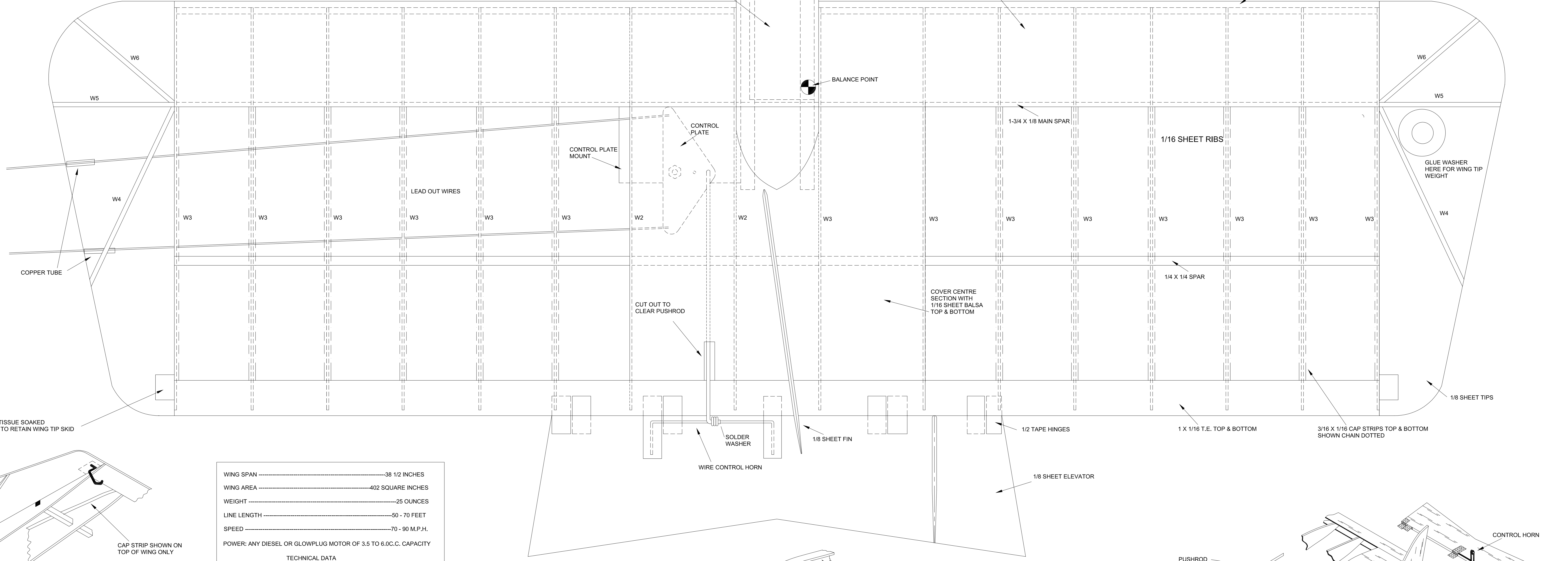
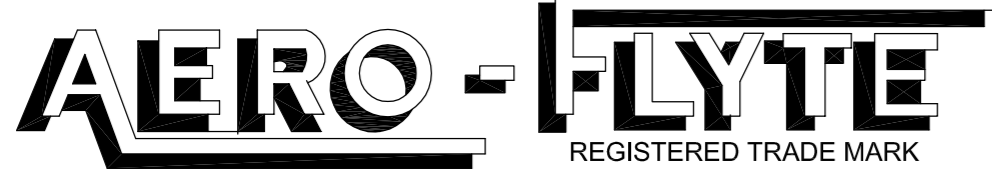


FIRESTREAK

REDRAWN FROM THE ORIGINAL PLAN WITH RIB AND FIN TEMPLATES ADDED BY JOHN MOODY, 15th JULY, 2012.

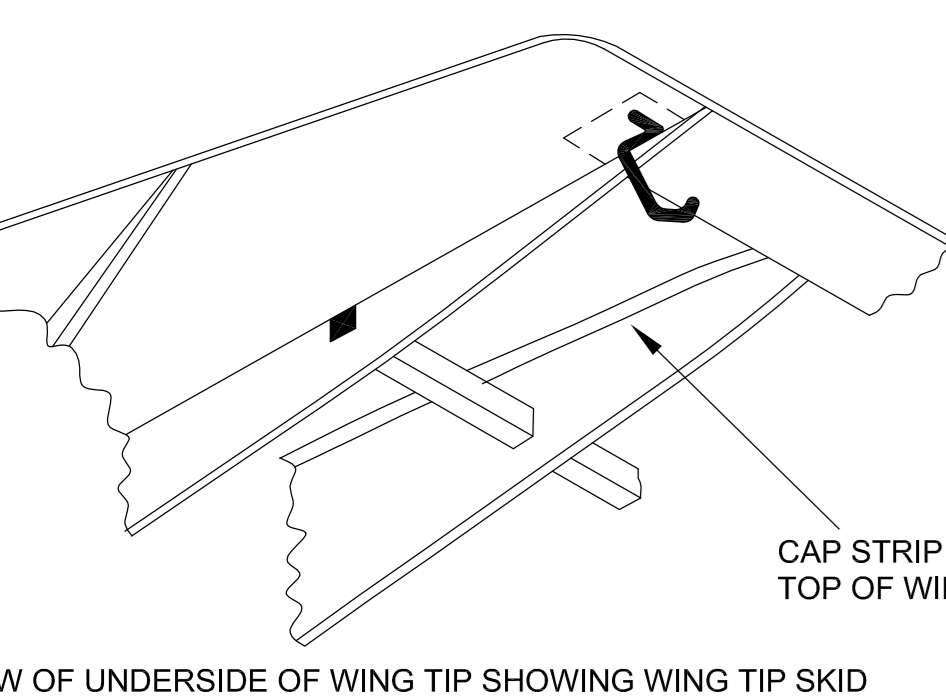
A HIGH PERFORMANCE COMBAT MODEL

MANUFACTURED BY SOUTHERN MODEL SUPPLIES LTD.

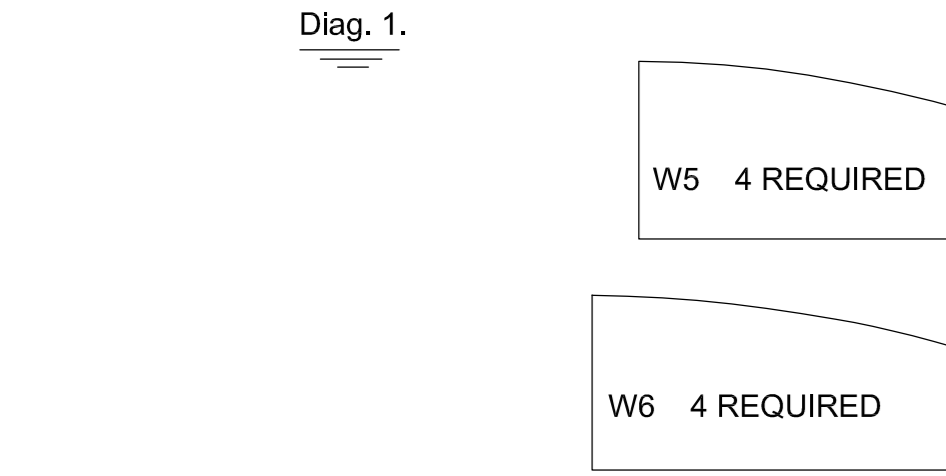


WING SPAN	38 1/2 INCHES
WING AREA	402 SQUARE INCHES
WEIGHT	25 OUNCES
LINE LENGTH	50 - 70 FEET
SPEED	70 - 90 M.P.H.
POWER	ANY DIESEL OR GLOWPLUG MOTOR OF 3.5 TO 6.0 C.C. CAPACITY
TECHNICAL DATA	

CLOTH OR TISSUE SOAKED WITH GLUE TO RETAIN WING TIP SKID



VIEW OF UNDERSIDE OF WING TIP SHOWING WING TIP SKID



FIRESTREAK
Use Aero-Flyte Fast Drying Cement for maximum strength.

Before beginning to build your Firestreak study the plan carefully until all stages of construction are fully understood.

STEP 1
Cut slots into half of the wing ribs supplied to allow for the lead-out wires and cut slots in 2 of these ribs for the control plate mount as in diagram 3. Slide all ribs onto the rear 1/4 x 1/4 spar and then fit the ribs onto the slotted 1 3/4 x 1/8 mainspar. Pin the leading edge and bottom 1 x 1/16 trailing edge sheeting into place and cement all joints. Next add the top 1 x 1/16 trailing edge sheeting, the wing tips and wing tip gussets and the leading edge covering top and bottom.

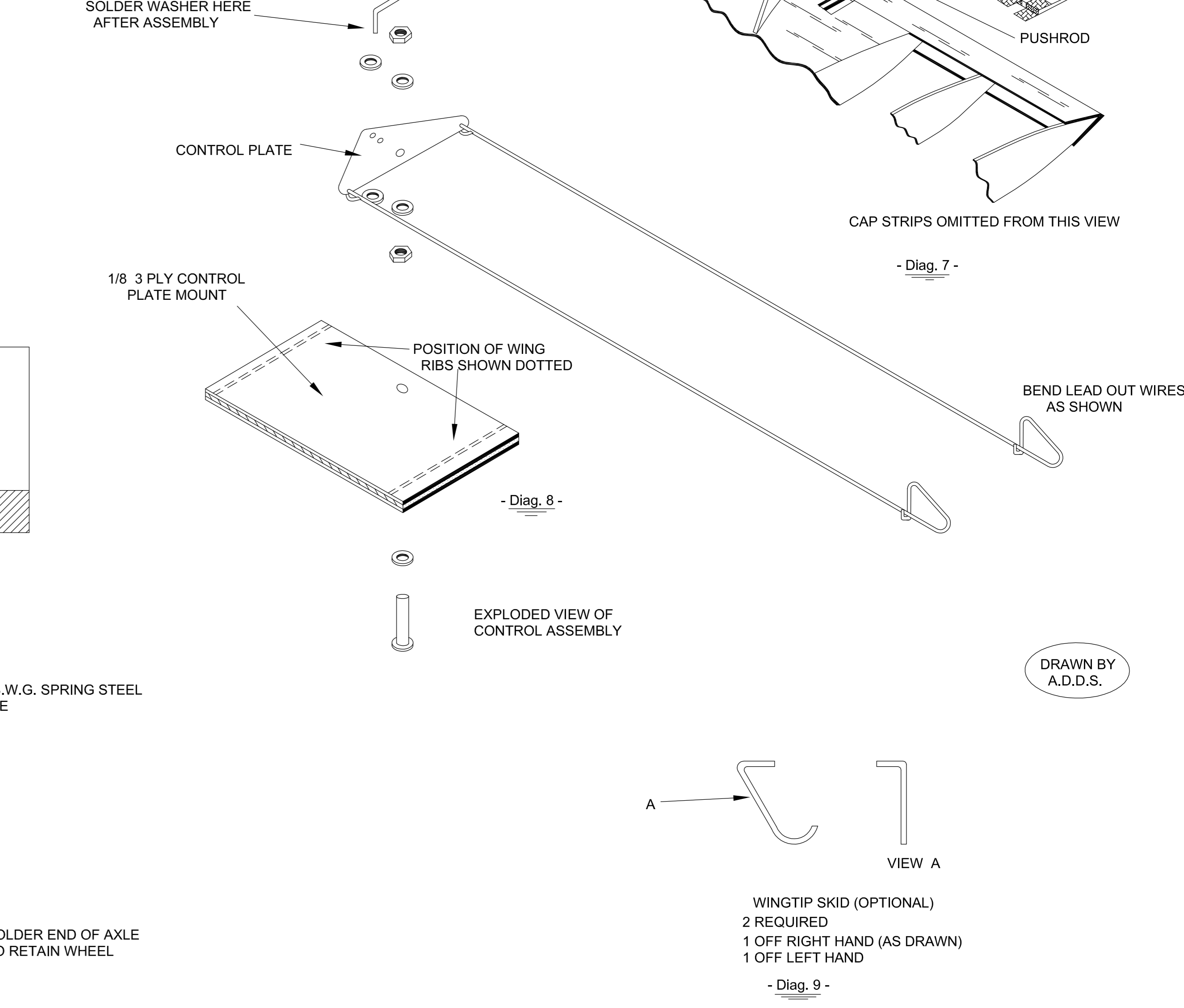
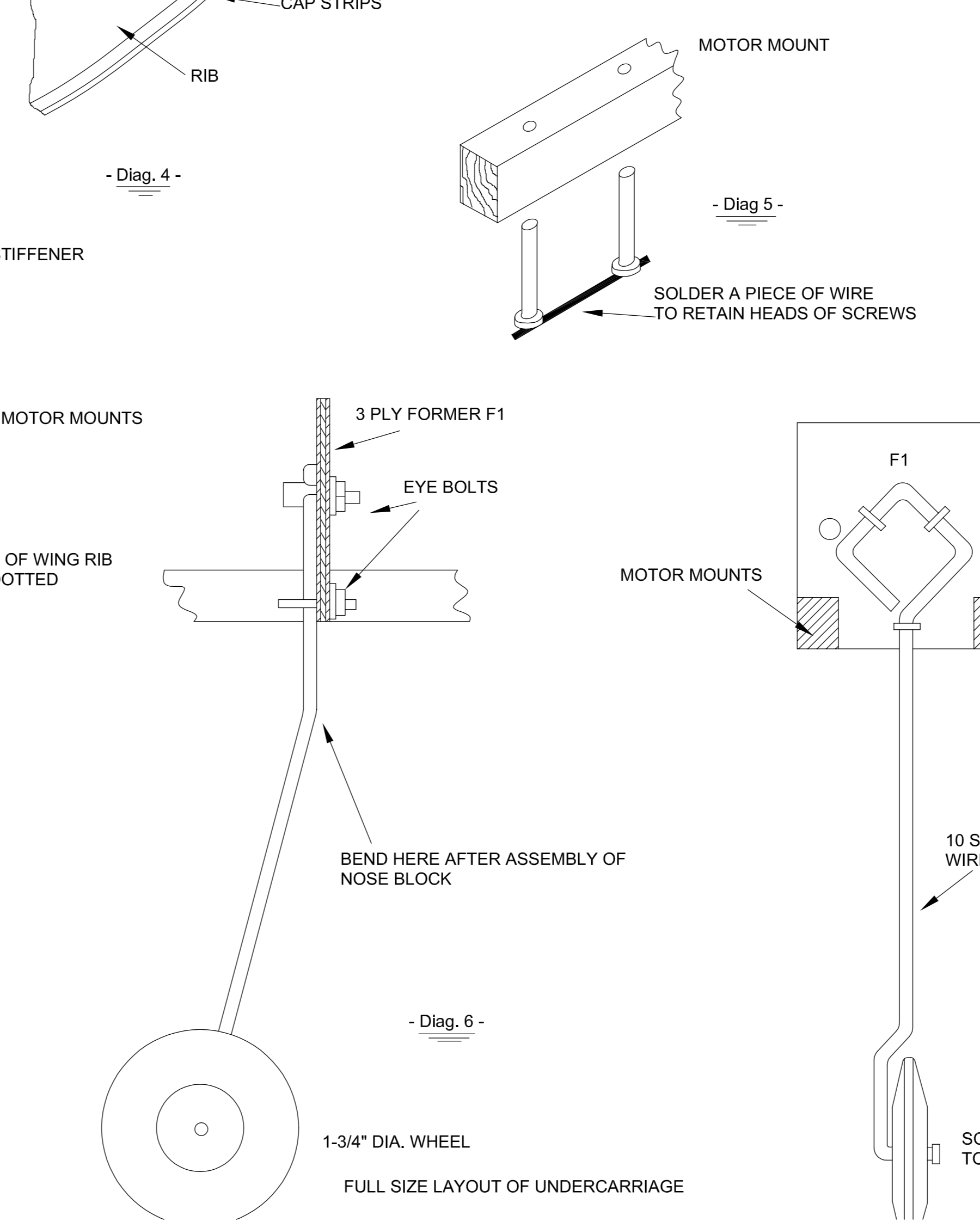
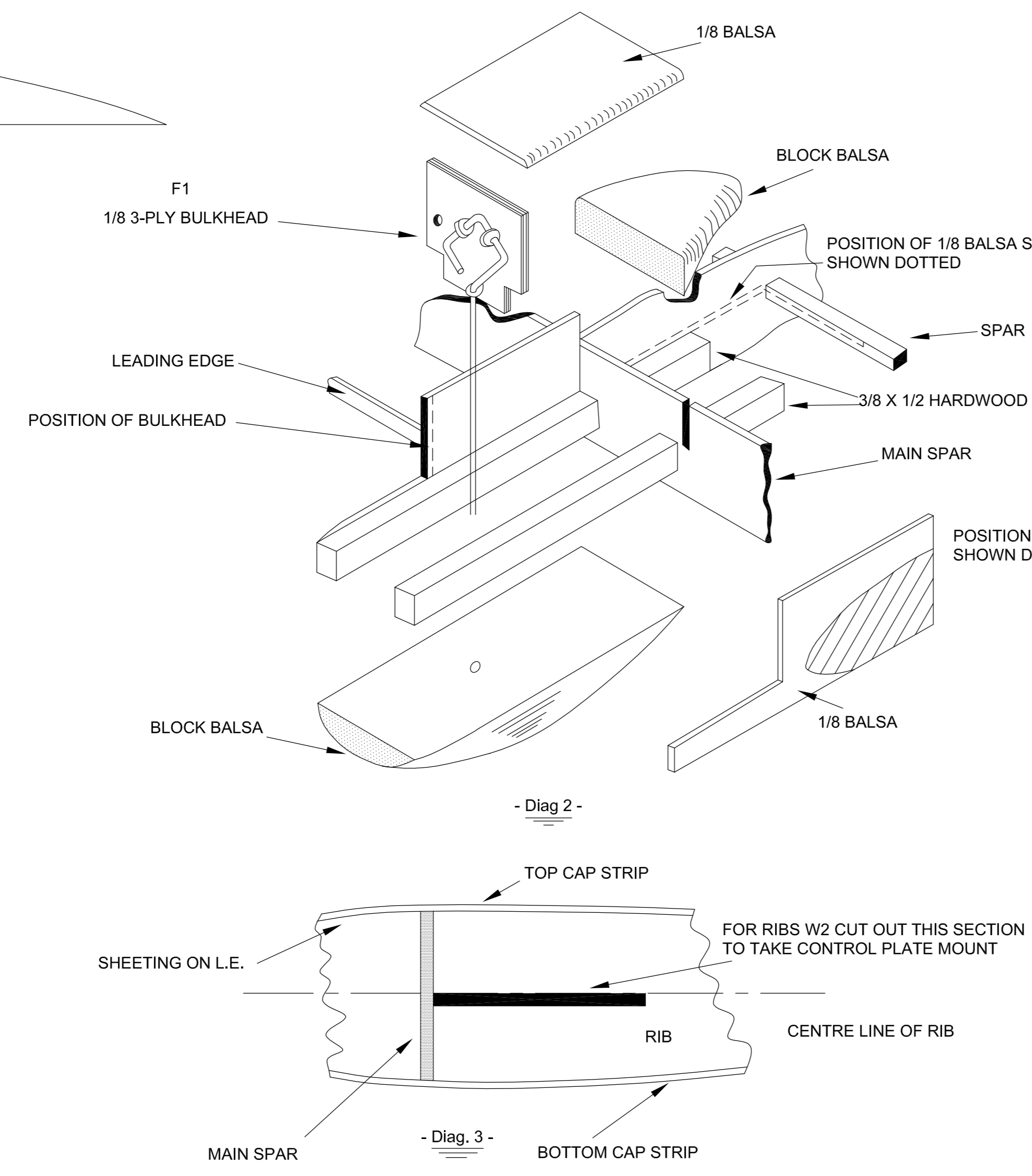
STEP 2
Cement the plywood control plate mount between the two W2 ribs (see diagram 3) and bolt the control plate to it as shown in diagram 8. Next fit the lead-out wires, copper tubing line guides, push rod, all rib capping strips and the wing tip weight.

STEP 3
Bend the undercarriage to shape (see diagram 6) and mount it to plywood former F1 using the three eye bolts supplied. Drill the 1/2 x 3/8 motor mounts to suit the motor to be used and bolt the motor to these, soldering a piece of wire across the heads of the bolts as shown in diagram 5. Cement former F1 to the engine mount with the tank fitted and leave aside to dry. When dry cement the fuselage sides to the engine mount assembly.

STEP 4
Cut away the leading edge of the wing to allow for the fuselage and cut two 3/8 x 1/2 holes in the mainspar to allow for the engine bearers (see diagram 2). Slide the fuselage into place and cement firmly to the wing. Next add the top and bottom centre sheet covering, top and bottom fuselage blocks and top 1/8 sheet fuselage covering. Attach the elevator to the wing using tape hinges as shown and then bend the wire control horn to shape and cement it to the elevator. Bend the end of the push rod at right angles and fit it through the control horn, making sure that the elevator is level when the control plate is held in the neutral position. Complete the construction by cementing the fin into place and fitting the wheel to the axle.

STEP 5
Sandpaper the entire airframe to a smooth finish all over and cover with the tissue supplied. Apply three coats of Aero-Flyte dope to the entire model and paint in the desired colours with fuel-proof paint.

The Firestreak is a high performance combat model which has already won a great number of contests and when powered with any good 3.5 to 6 c.c. motor, your Firestreak will be capable of a similar contest winning performance.



DRAWN BY A.D.D.S.