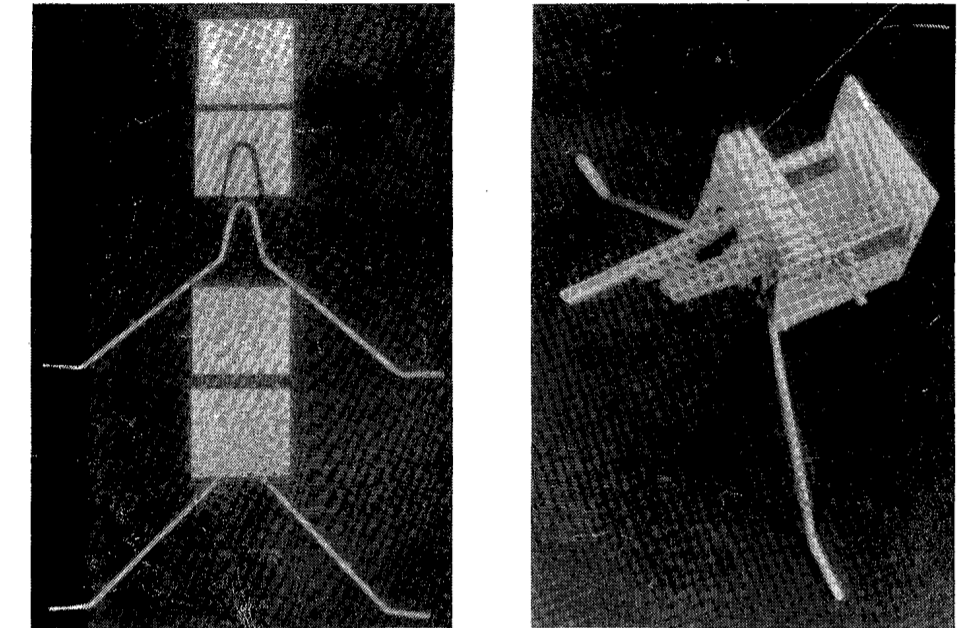


**GENERAL BUILDING NOTES:**  
 Before you begin building, it is important to study the plan carefully. A good flat building board will enable you to build quickly and squarely. This should ensure that your model will have no twists and warps. As needed remove each piece from its balsa wood sheet with the help of a sharp pointed hobby knife.

**STAGE ONE**  
 Former F2 has been diecut to accept the performed wire undercarriage. Epoxy glue F2 on top of F3 then place the undercarriage in the die cut slot and flood with epoxy. place F1 on top and clamp together. When dry cut out from the plan the drilling template and fix temporarily to the front of former assembly, drill as per plan making sure the u.c. legs are angled forward.

Fit the radial mount to the assembly and epoxy glue the radial mount nuts in place. (Lightly coat the bolts with oil to prevent nuts gluing to bolts.) Trim bolts flush with nuts. NOTE: The radial mount must be drilled and tapped to suit your engine.

Before gluing the tank placement block 1 in position it is necessary to carve out part of the block to clear the bottom engine bolt and nut. Place the fuel tubing supplied firmly onto the tank feed pipe and cement the tank into position. A small piece of scrap balsa is placed between the tank and engine mount bolts to avoid puncturing the tank. When dry cement former F4 to the back of the placement block 1 as shown the top and side views.



**STAGE TWO**  
 Choose one fuselage side 2 only and drill two 3mm dia. holes where pin marked for the tank feed pipes. On the same side cut out the lead out circles where partly diecut. Glue the fuselage side to the front assembly making sure it is straight and square. (It may help to place the fuselage upside down on the top view of the plan.) When dry glue the other fuselage side to the assembly making sure the two sides are square. The assembly block 3 is then glued to the front of former F4 and on top of the fuselage sides, making sure it overhangs each fuselage side equally (approx. 11mm) to suit the air scoop sides which will be added later.

Lightly sand the edges of the tailplane 4 round. The tailplane is then positioned in the position pin marked on the underside of the elevator. Fit the end of the pushrod through the control horn, cut thin slots in the elevator and tailplane, push hinges into slots, but do not glue till the model has been tissued and painted (note: when finally gluing hinges in place, use white glue and when drying carefully wash out any excess glue from hinge pins). Thoroughly check the controls for free movement of at least 30° up and down.

Drill a 3mm hole in ply mount 5 where pin marked and make the control plate assembly as shown. It is important that the bolt is tightly screwed to the ply mount but that the control plate moves freely in the bolt. Bend and fit the lead out wires and formed pushrod wire. The ply mount may now be glued to the fuselage with the lead out wires through the fuselage sides and the pushrod towards the rear of the model and under the tailplane.

Lightly sand the elevator 6 and round the edges. Bolt the nylon control horn in the position pin marked on the underside of the elevator. Fit the end of the pushrod through the control horn, cut thin slots in the elevator and tailplane, push hinges into slots, but do not glue till the model has been tissued and painted (note: when finally gluing hinges in place, use white glue and when drying carefully wash out any excess glue from hinge pins). Thoroughly check the controls for free movement of at least 30° up and down.

Lightly sand the elevator 6 and round the edges. Bolt the nylon control horn in the position pin marked on the underside of the elevator. Fit the end of the pushrod through the control horn, cut thin slots in the elevator and tailplane, push hinges into slots, but do not glue till the model has been tissued and painted (note: when finally gluing hinges in place, use white glue and when drying carefully wash out any excess glue from hinge pins). Thoroughly check the controls for free movement of at least 30° up and down.

Lightly sand the elevator 6 and round the edges. Bolt the nylon control horn in the position pin marked on the underside of the elevator. Fit the end of the pushrod through the control horn, cut thin slots in the elevator and tailplane, push hinges into slots, but do not glue till the model has been tissued and painted (note: when finally gluing hinges in place, use white glue and when drying carefully wash out any excess glue from hinge pins). Thoroughly check the controls for free movement of at least 30° up and down.

Lightly sand the elevator 6 and round the edges. Bolt the nylon control horn in the position pin marked on the underside of the elevator. Fit the end of the pushrod through the control horn, cut thin slots in the elevator and tailplane, push hinges into slots, but do not glue till the model has been tissued and painted (note: when finally gluing hinges in place, use white glue and when drying carefully wash out any excess glue from hinge pins). Thoroughly check the controls for free movement of at least 30° up and down.

Lightly sand the elevator 6 and round the edges. Bolt the nylon control horn in the position pin marked on the underside of the elevator. Fit the end of the pushrod through the control horn, cut thin slots in the elevator and tailplane, push hinges into slots, but do not glue till the model has been tissued and painted (note: when finally gluing hinges in place, use white glue and when drying carefully wash out any excess glue from hinge pins). Thoroughly check the controls for free movement of at least 30° up and down.

Lightly sand the elevator 6 and round the edges. Bolt the nylon control horn in the position pin marked on the underside of the elevator. Fit the end of the pushrod through the control horn, cut thin slots in the elevator and tailplane, push hinges into slots, but do not glue till the model has been tissued and painted (note: when finally gluing hinges in place, use white glue and when drying carefully wash out any excess glue from hinge pins). Thoroughly check the controls for free movement of at least 30° up and down.

Lightly sand the elevator 6 and round the edges. Bolt the nylon control horn in the position pin marked on the underside of the elevator. Fit the end of the pushrod through the control horn, cut thin slots in the elevator and tailplane, push hinges into slots, but do not glue till the model has been tissued and painted (note: when finally gluing hinges in place, use white glue and when drying carefully wash out any excess glue from hinge pins). Thoroughly check the controls for free movement of at least 30° up and down.

Lightly sand the elevator 6 and round the edges. Bolt the nylon control horn in the position pin marked on the underside of the elevator. Fit the end of the pushrod through the control horn, cut thin slots in the elevator and tailplane, push hinges into slots, but do not glue till the model has been tissued and painted (note: when finally gluing hinges in place, use white glue and when drying carefully wash out any excess glue from hinge pins). Thoroughly check the controls for free movement of at least 30° up and down.

Lightly sand the elevator 6 and round the edges. Bolt the nylon control horn in the position pin marked on the underside of the elevator. Fit the end of the pushrod through the control horn, cut thin slots in the elevator and tailplane, push hinges into slots, but do not glue till the model has been tissued and painted (note: when finally gluing hinges in place, use white glue and when drying carefully wash out any excess glue from hinge pins). Thoroughly check the controls for free movement of at least 30° up and down.

Lightly sand the elevator 6 and round the edges. Bolt the nylon control horn in the position pin marked on the underside of the elevator. Fit the end of the pushrod through the control horn, cut thin slots in the elevator and tailplane, push hinges into slots, but do not glue till the model has been tissued and painted (note: when finally gluing hinges in place, use white glue and when drying carefully wash out any excess glue from hinge pins). Thoroughly check the controls for free movement of at least 30° up and down.

Lightly sand the elevator 6 and round the edges. Bolt the nylon control horn in the position pin marked on the underside of the elevator. Fit the end of the pushrod through the control horn, cut thin slots in the elevator and tailplane, push hinges into slots, but do not glue till the model has been tissued and painted (note: when finally gluing hinges in place, use white glue and when drying carefully wash out any excess glue from hinge pins). Thoroughly check the controls for free movement of at least 30° up and down.

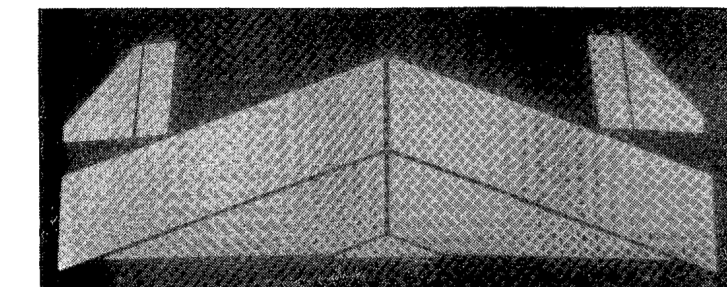
Lightly sand the elevator 6 and round the edges. Bolt the nylon control horn in the position pin marked on the underside of the elevator. Fit the end of the pushrod through the control horn, cut thin slots in the elevator and tailplane, push hinges into slots, but do not glue till the model has been tissued and painted (note: when finally gluing hinges in place, use white glue and when drying carefully wash out any excess glue from hinge pins). Thoroughly check the controls for free movement of at least 30° up and down.

Lightly sand the elevator 6 and round the edges. Bolt the nylon control horn in the position pin marked on the underside of the elevator. Fit the end of the pushrod through the control horn, cut thin slots in the elevator and tailplane, push hinges into slots, but do not glue till the model has been tissued and painted (note: when finally gluing hinges in place, use white glue and when drying carefully wash out any excess glue from hinge pins). Thoroughly check the controls for free movement of at least 30° up and down.

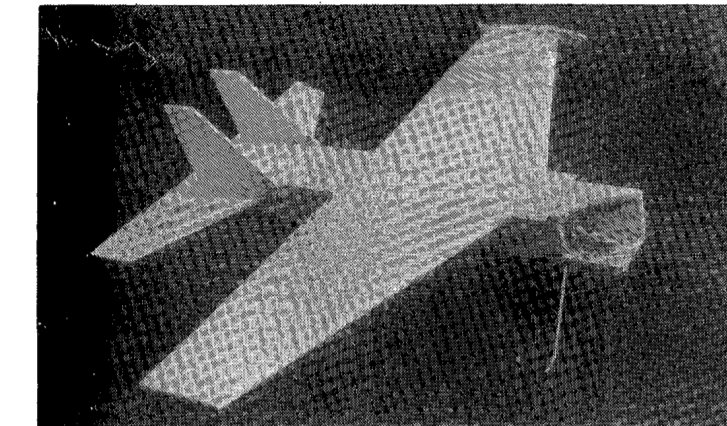
Lightly sand the elevator 6 and round the edges. Bolt the nylon control horn in the position pin marked on the underside of the elevator. Fit the end of the pushrod through the control horn, cut thin slots in the elevator and tailplane, push hinges into slots, but do not glue till the model has been tissued and painted (note: when finally gluing hinges in place, use white glue and when drying carefully wash out any excess glue from hinge pins). Thoroughly check the controls for free movement of at least 30° up and down.

**STAGE FOUR**

Glue the wing parts 11, 12 and 13 together as shown, weight or clamp to a flat surface and allow to dry. Trim each wing tip to the shape on the plan, also trim the front section of wing where shown (B-B). Sand the wing to the given profile and epoxy glue the ply lead out guide 14 to the wing. The cloth tape supplied is glued to the bottom centre joint of the wing. Glue the weight washer to the underside rear tip of the outer wing. Make sure the wing is parallel with the tail plane glue to the fuselage sides where shown on the plan.



The 1.5mm top sheeting is glued in place working from the trailing edge of the wing to the rear of model, followed by the bottom sheeting. When dry sand sheeting flush with the fuselage sides. Assemble the fin parts 15 and 16, glue and then clamp to flat surface till dry. The fins are then glued to the air scoop sides, flush to the end of scoops and resting on the tailplane.



**STAGE FIVE**

The nose section is now ready to block up. Start by shaping the top nose block 17 as shown in the plan top view to give clearance around your engine. Refer to the plan side and top views for block positioning. Glue the top nose block 17 and side cowl block 19 in position followed by the bottom block 18.

From the plan template cut out fill in block 20 and glue in position. The triangular gussets and scrap balsa are cut and fitted inside the nose section. When dry shape the nose in a faircurve from former 1 to line up with a 52mm nose spinner.

Drill a 3mm hole in ply mount 5 where pin marked and make the control plate assembly as shown. It is important that the bolt is tightly screwed to the ply mount but that the control plate moves freely in the bolt. Bend and fit the lead out wires and formed pushrod wire. The ply mount may now be glued to the fuselage with the lead out wires through the fuselage sides and the pushrod towards the rear of the model and under the tailplane.

Lightly sand the elevator 6 and round the edges. Bolt the nylon control horn in the position pin marked on the underside of the elevator. Fit the end of the pushrod through the control horn, cut thin slots in the elevator and tailplane, push hinges into slots, but do not glue till the model has been tissued and painted (note: when finally gluing hinges in place, use white glue and when drying carefully wash out any excess glue from hinge pins). Thoroughly check the controls for free movement of at least 30° up and down.

Lightly sand the elevator 6 and round the edges. Bolt the nylon control horn in the position pin marked on the underside of the elevator. Fit the end of the pushrod through the control horn, cut thin slots in the elevator and tailplane, push hinges into slots, but do not glue till the model has been tissued and painted (note: when finally gluing hinges in place, use white glue and when drying carefully wash out any excess glue from hinge pins). Thoroughly check the controls for free movement of at least 30° up and down.

Lightly sand the elevator 6 and round the edges. Bolt the nylon control horn in the position pin marked on the underside of the elevator. Fit the end of the pushrod through the control horn, cut thin slots in the elevator and tailplane, push hinges into slots, but do not glue till the model has been tissued and painted (note: when finally gluing hinges in place, use white glue and when drying carefully wash out any excess glue from hinge pins). Thoroughly check the controls for free movement of at least 30° up and down.

Lightly sand the elevator 6 and round the edges. Bolt the nylon control horn in the position pin marked on the underside of the elevator. Fit the end of the pushrod through the control horn, cut thin slots in the elevator and tailplane, push hinges into slots, but do not glue till the model has been tissued and painted (note: when finally gluing hinges in place, use white glue and when drying carefully wash out any excess glue from hinge pins). Thoroughly check the controls for free movement of at least 30° up and down.

Lightly sand the elevator 6 and round the edges. Bolt the nylon control horn in the position pin marked on the underside of the elevator. Fit the end of the pushrod through the control horn, cut thin slots in the elevator and tailplane, push hinges into slots, but do not glue till the model has been tissued and painted (note: when finally gluing hinges in place, use white glue and when drying carefully wash out any excess glue from hinge pins). Thoroughly check the controls for free movement of at least 30° up and down.

Lightly sand the elevator 6 and round the edges. Bolt the nylon control horn in the position pin marked on the underside of the elevator. Fit the end of the pushrod through the control horn, cut thin slots in the elevator and tailplane, push hinges into slots, but do not glue till the model has been tissued and painted (note: when finally gluing hinges in place, use white glue and when drying carefully wash out any excess glue from hinge pins). Thoroughly check the controls for free movement of at least 30° up and down.

Lightly sand the elevator 6 and round the edges. Bolt the nylon control horn in the position pin marked on the underside of the elevator. Fit the end of the pushrod through the control horn, cut thin slots in the elevator and tailplane, push hinges into slots, but do not glue till the model has been tissued and painted (note: when finally gluing hinges in place, use white glue and when drying carefully wash out any excess glue from hinge pins). Thoroughly check the controls for free movement of at least 30° up and down.

Lightly sand the elevator 6 and round the edges. Bolt the nylon control horn in the position pin marked on the underside of the elevator. Fit the end of the pushrod through the control horn, cut thin slots in the elevator and tailplane, push hinges into slots, but do not glue till the model has been tissued and painted (note: when finally gluing hinges in place, use white glue and when drying carefully wash out any excess glue from hinge pins). Thoroughly check the controls for free movement of at least 30° up and down.

Lightly sand the elevator 6 and round the edges. Bolt the nylon control horn in the position pin marked on the underside of the elevator. Fit the end of the pushrod through the control horn, cut thin slots in the elevator and tailplane, push hinges into slots, but do not glue till the model has been tissued and painted (note: when finally gluing hinges in place, use white glue and when drying carefully wash out any excess glue from hinge pins). Thoroughly check the controls for free movement of at least 30° up and down.

Lightly sand the elevator 6 and round the edges. Bolt the nylon control horn in the position pin marked on the underside of the elevator. Fit the end of the pushrod through the control horn, cut thin slots in the elevator and tailplane, push hinges into slots, but do not glue till the model has been tissued and painted (note: when finally gluing hinges in place, use white glue and when drying carefully wash out any excess glue from hinge pins). Thoroughly check the controls for free movement of at least 30° up and down.

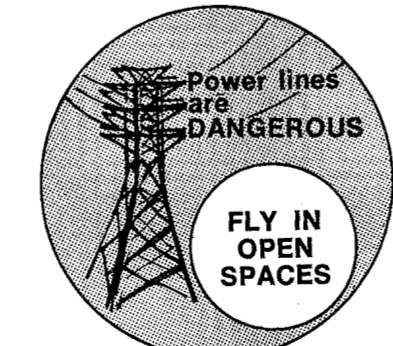
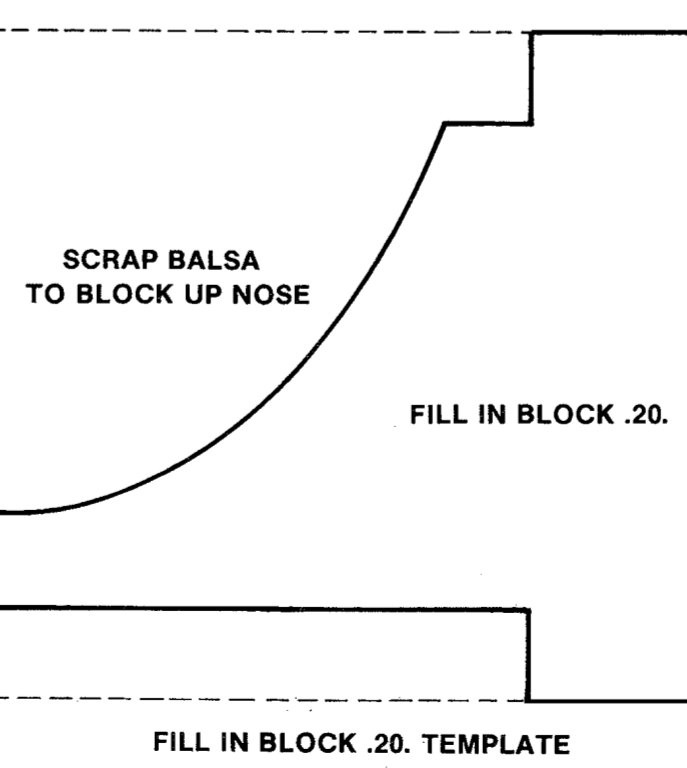
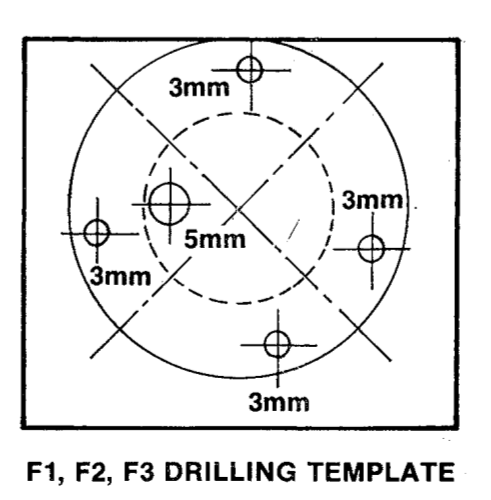
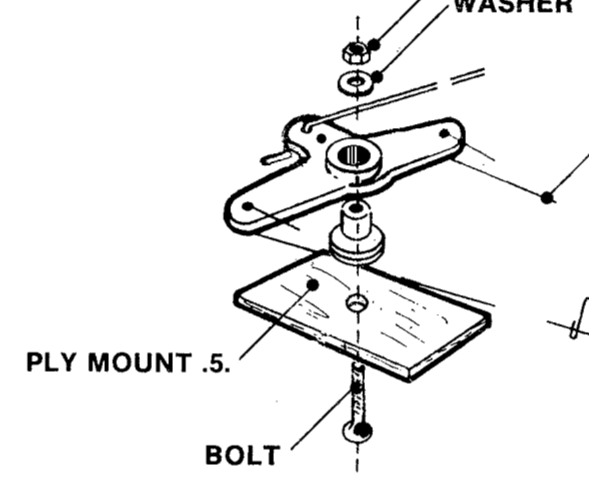
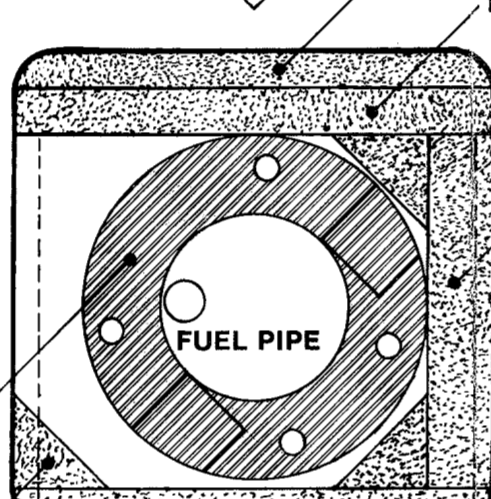
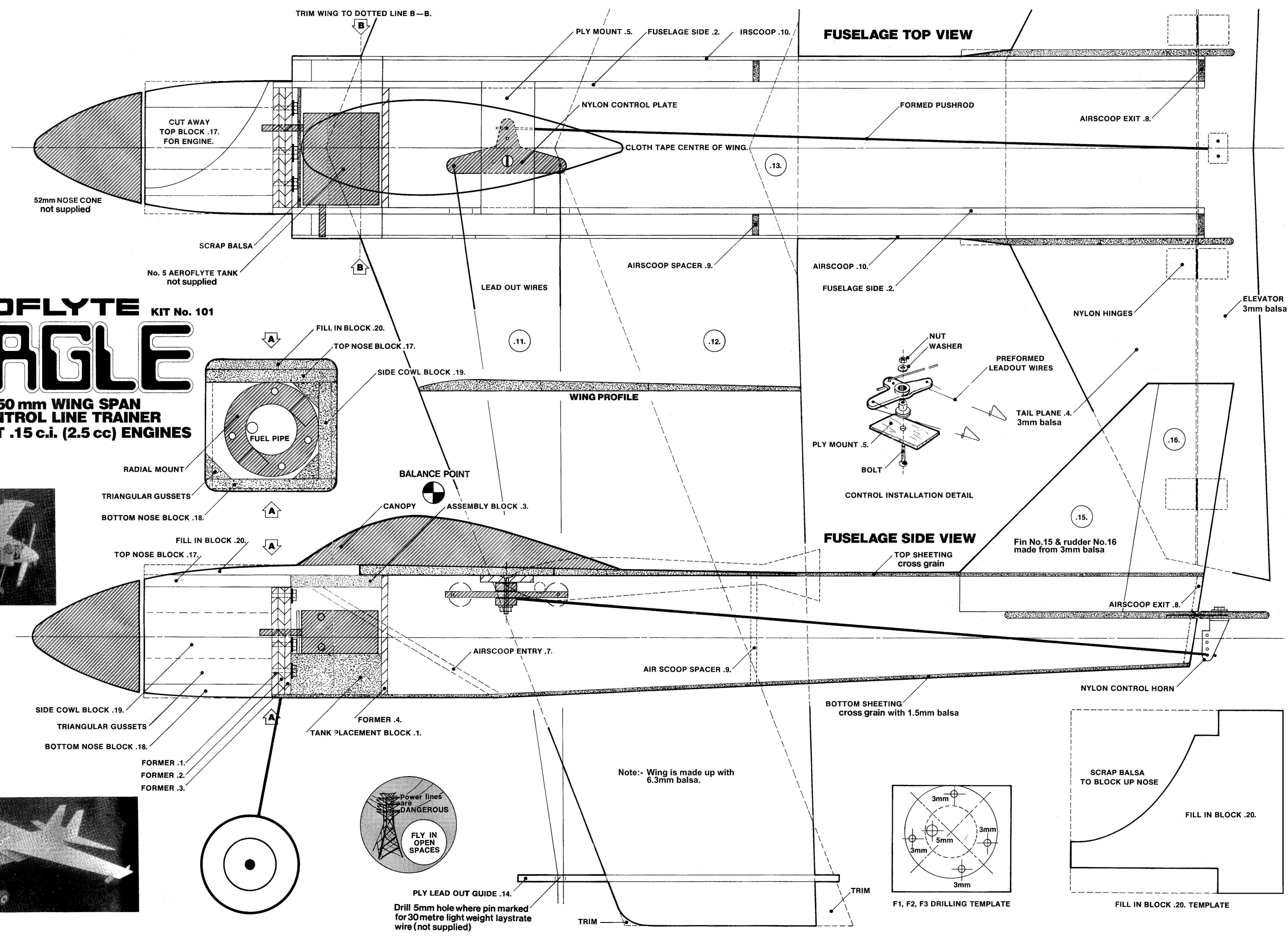
Lightly sand the elevator 6 and round the edges. Bolt the nylon control horn in the position pin marked on the underside of the elevator. Fit the end of the pushrod through the control horn, cut thin slots in the elevator and tailplane, push hinges into slots, but do not glue till the model has been tissued and painted (note: when finally gluing hinges in place, use white glue and when drying carefully wash out any excess glue from hinge pins). Thoroughly check the controls for free movement of at least 30° up and down.

Lightly sand the elevator 6 and round the edges. Bolt the nylon control horn in the position pin marked on the underside of the elevator. Fit the end of the pushrod through the control horn, cut thin slots in the elevator and tailplane, push hinges into slots, but do not glue till the model has been tissued and painted (note: when finally gluing hinges in place, use white glue and when drying carefully wash out any excess glue from hinge pins). Thoroughly check the controls for free movement of at least 30° up and down.

Lightly sand the elevator 6 and round the edges. Bolt the nylon control horn in the position pin marked on the underside of the elevator. Fit the end of the pushrod through the control horn, cut thin slots in the elevator and tailplane, push hinges into slots, but do not glue till the model has been tissued and painted (note: when finally gluing hinges in place, use white glue and when drying carefully wash out any excess glue from hinge pins). Thoroughly check the controls for free movement of at least 30° up and down.

Lightly sand the elevator 6 and round the edges. Bolt the nylon control horn in the position pin marked on the underside of the elevator. Fit the end of the pushrod through the control horn, cut thin slots in the elevator and tailplane, push hinges into slots, but do not glue till the model has been tissued and painted (note: when finally gluing hinges in place, use white glue and when drying carefully wash out any excess glue from hinge pins). Thoroughly check the controls for free movement of at least 30° up and down.

**AEROFLYTE KIT No. 101**  
**EAGLE**  
 750 mm WING SPAN  
 CONTROL LINE TRAINER  
 TO SUIT .15 c.i. (2.5 cc) ENGINES



Drill 5mm hole where pin marked for 30 metre light weight laystrate wire (not supplied)

Note:- Wing is made up with 6.3mm balsa.

**EAGLE FLIGHT INSTRUCTIONS**

Power lines DANGEROUS FLY IN OPEN SPACES

INCORRECT POSITION FOR TAKEOFF RESULTS IN LINES SLACKENING DUE TO CROSSWIND BLOWING PLANE FORWARDS BEFORE SPEED IS ATTAINED.

CORRECT TAKEOFF POSITION

WIND DIRECTION

FLIGHT CIRCLE

GOOD FLYING SPEED IS ATTAINED BY THE TIME THIS POINT IS REACHED.

WIND DIRECTION

POINT PLANE TO RIGHT

CONTROL LINE DETAILS

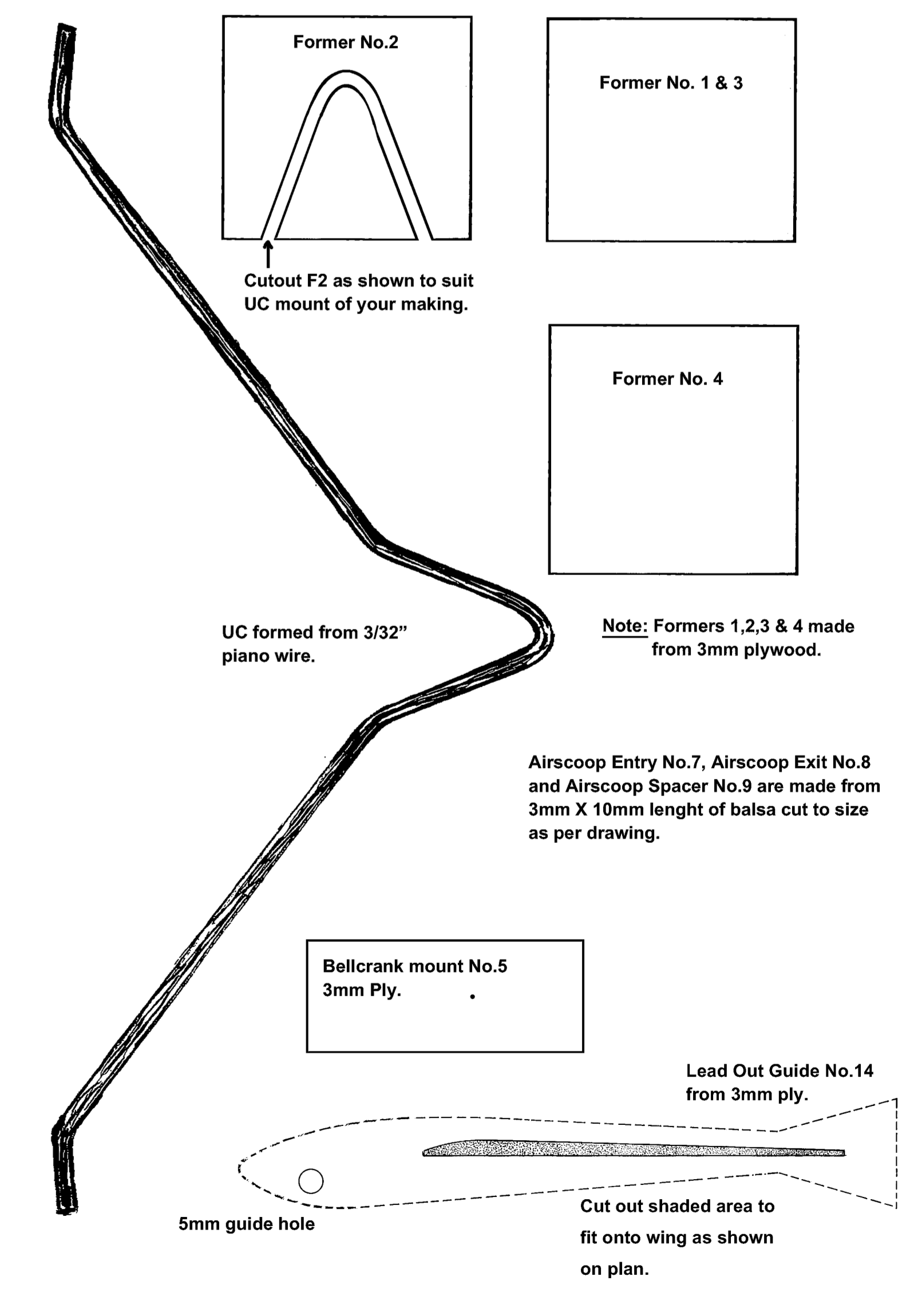
NEUTRAL CONTROL LEVEL ATTITUDE

UP ELEVATOR NEUTRAL ELEVATOR DOWN ELEVATOR

CONTROL CHECK

Have letter signal up or down movement.

AEROFLYTE ACCESSORIES	
Recom. Engine OS 15S	Fuel Tank 5
Prop. 8x6	Gloss (G.S.) No. 1
Dope 250 ml	Laystrate AF 282
Control line Handle AF 228	



MODEL SHOWN CORRECT WAY UP

MODEL SHOWN UPSIDE DOWN.

MODEL SHOWN CORRECT WAY UP

MODEL SHOWN UPSIDE DOWN.