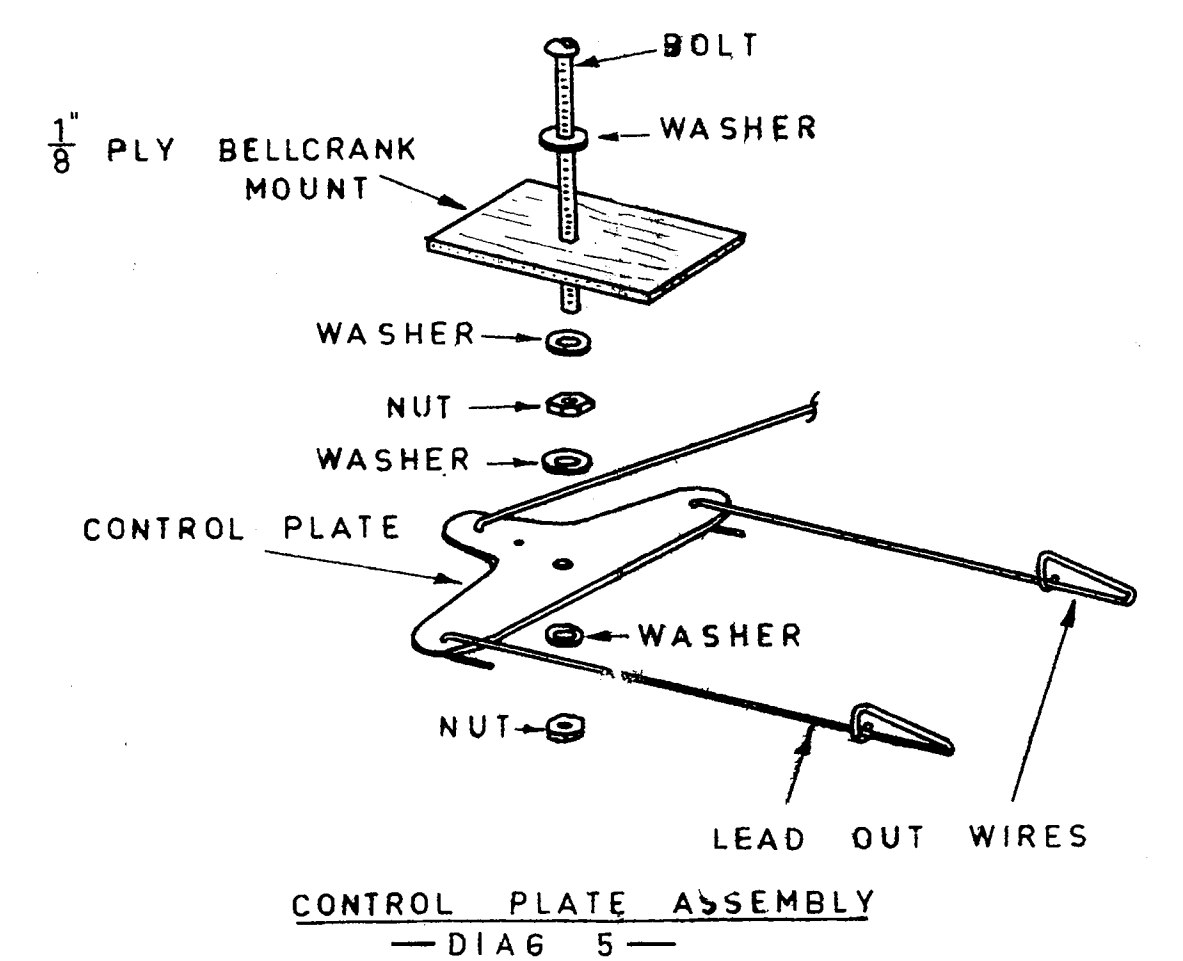
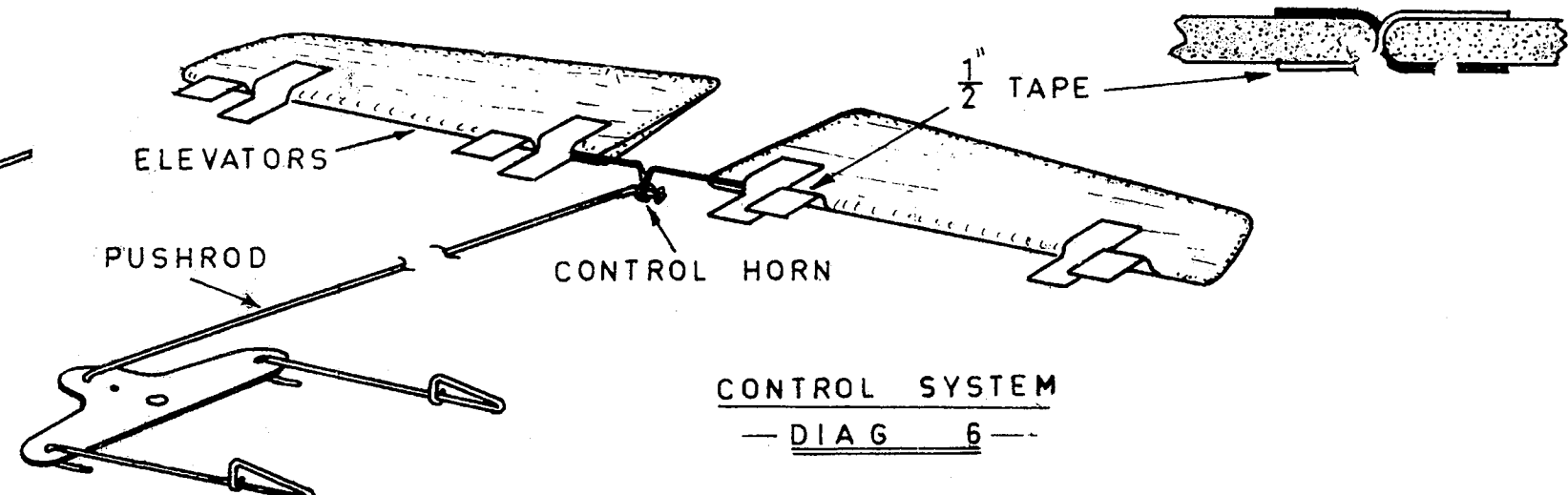
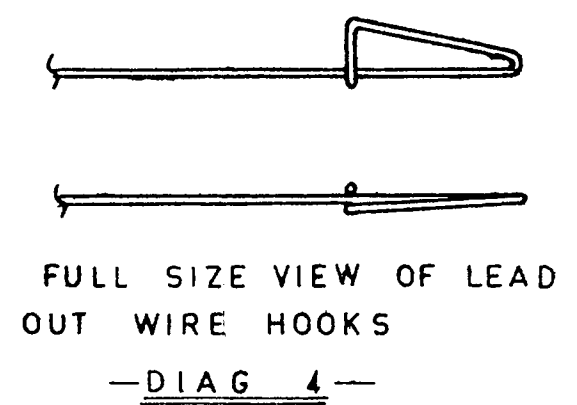
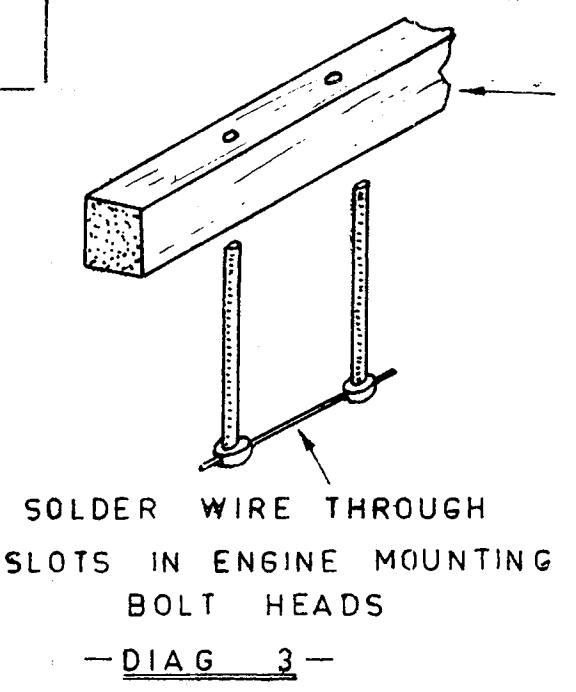
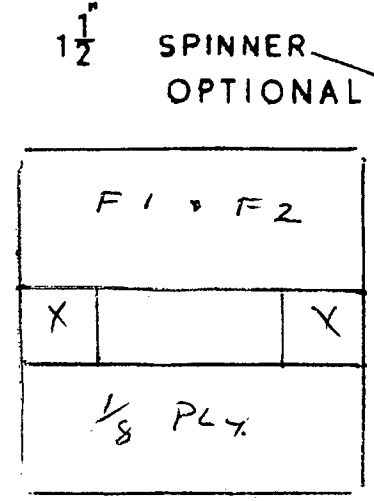
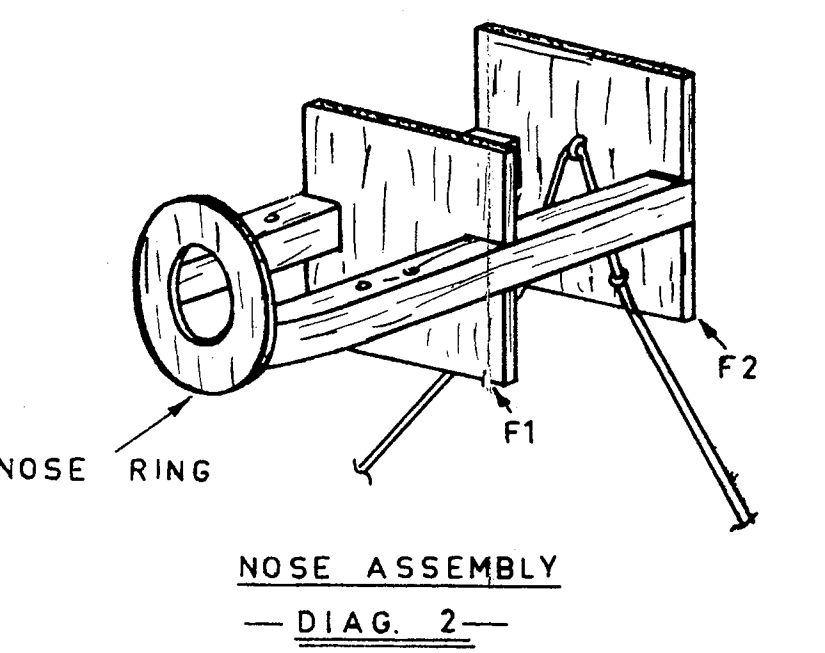
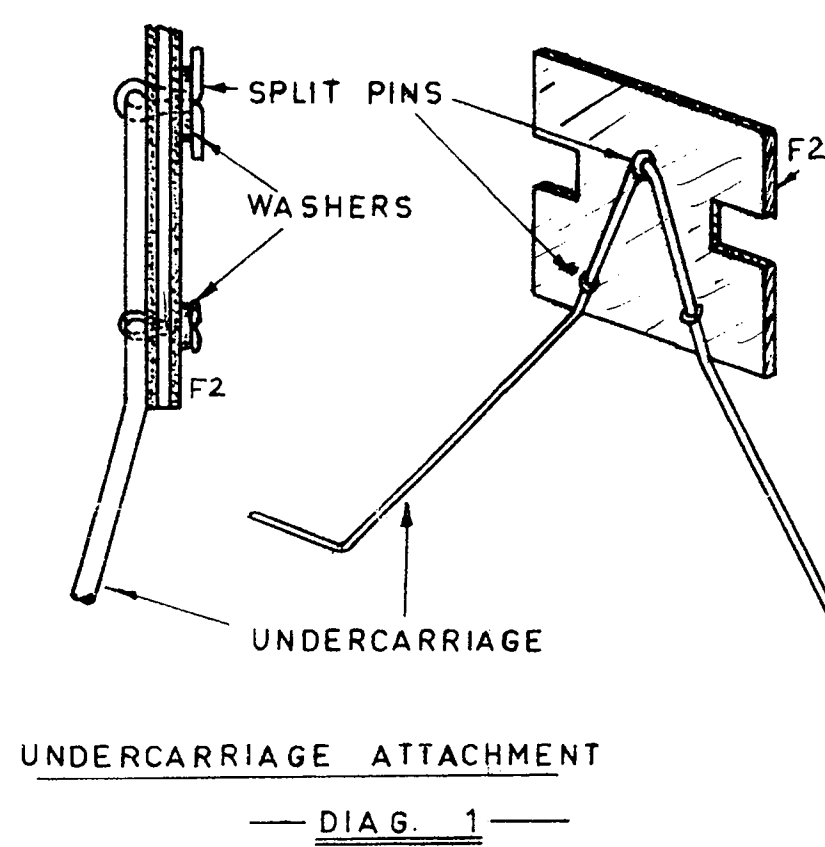
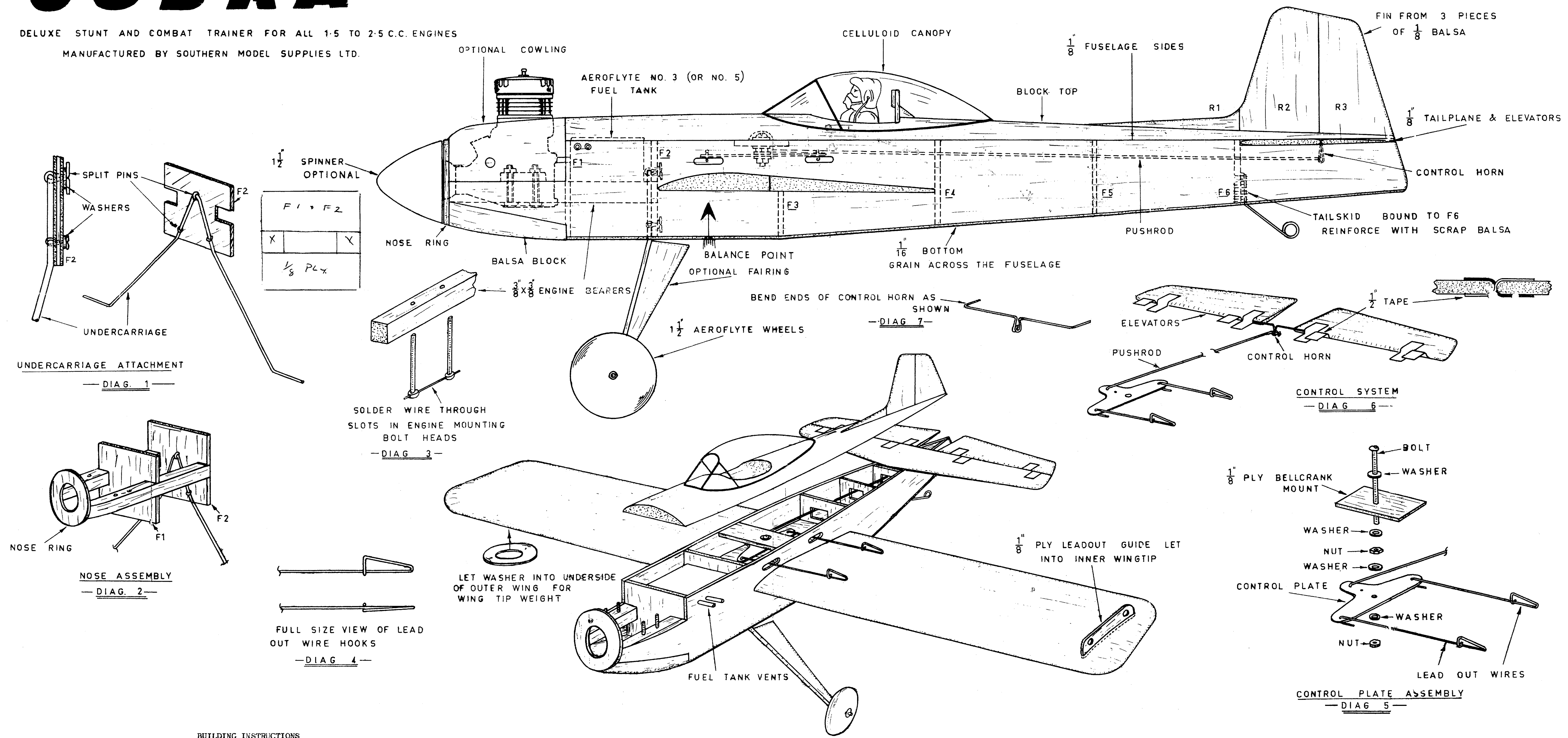


COBRA

DELUXE STUNT AND COMBAT TRAINER FOR ALL 1.5 TO 2.5 C.C. ENGINES
 MANUFACTURED BY SOUTHERN MODEL SUPPLIES LTD.



BUILDING INSTRUCTIONS

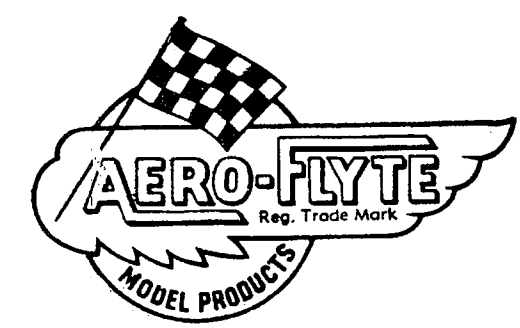
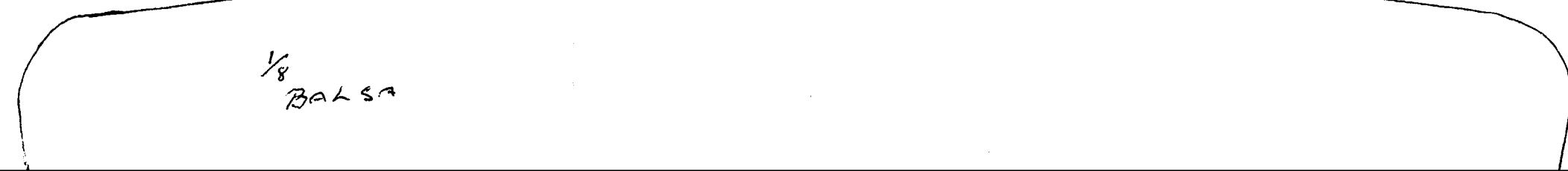
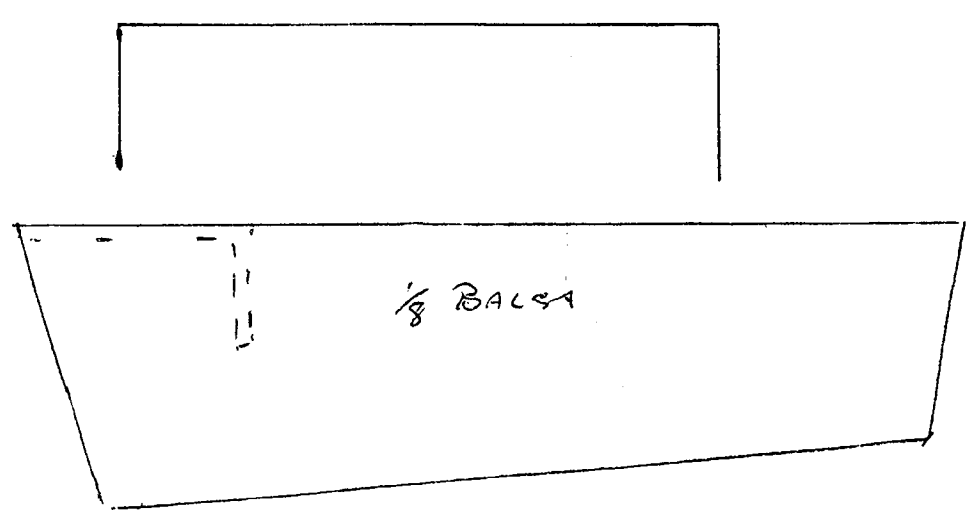
STEP 1
 Cut out all parts from the printed sheet and then study the plan until all stages of construction are fully understood.

STEP 2
 Mount the ready formed undercarriage onto the ply former F2 as shown in diag. 1 then cement F1 and F2 to the engine bearers to make up the nose assembly as in diag. 2. When dry drill holes in the engine bearers and bolt the motor into place, soldering a piece of wire across the bolt heads as shown in diag. 3.

STEP 3
 Cement the fuselage sides to the engine mount assembly fitting the tank at the same time and cement fuselage formers F3, F4, F5 and F6 into place. Next attach the elevators to the tailplane with tape hinges fitting the wire control horn at the same time then bolt the control plate to the control plate mount making sure that the bolt is tight on the ply but the control plate is loose on the bolt. Pin the tailplane and the control plate mount to the fuselage and bend the pushrod wire to suit then cement these into place. Check that the elevators are free to move at least 30° up and down.

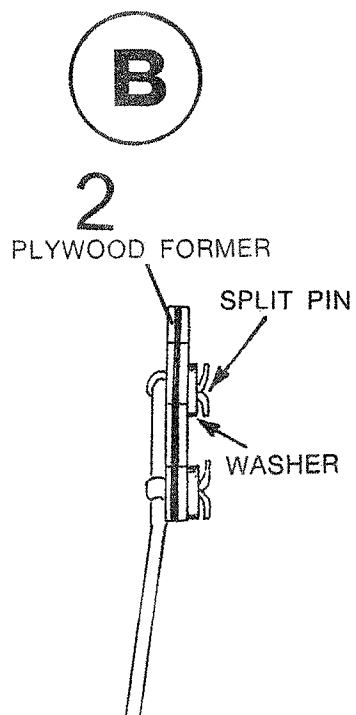
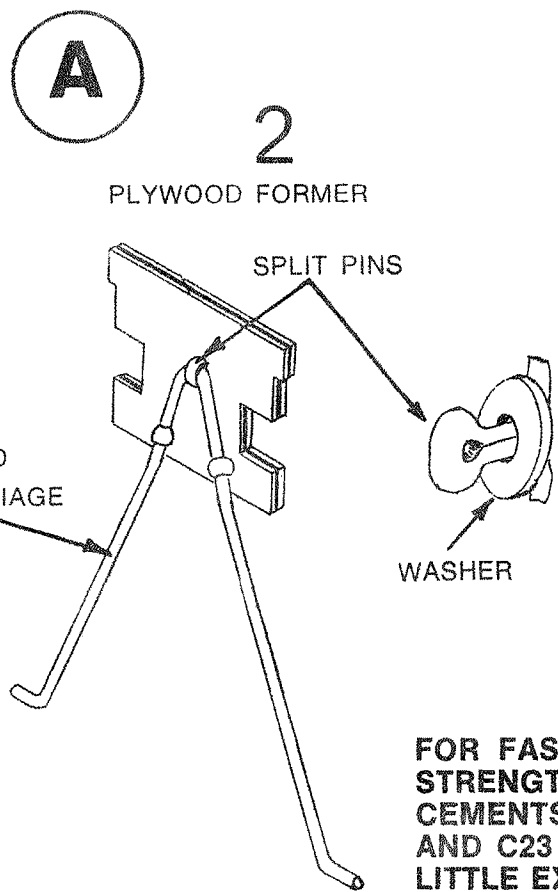
STEP 4
 Cement the two halves of the wing together then slide it through the fuselage and cement firmly into place. Fit the block top, canopy, fin, sheet bottom and bottom nose block and sandpaper the model to a smooth finish all over. Apply 3 coats of Aero-Flyte dope and paint in the desired colours with fuelproof paint.

FLYING
 Use two 45 foot lines if you are using a 2.5 c.c. engine and two 35 foot lines if using a 1.5 c.c. engine. Make sure that you launch the model down wind with the motor running at full power using full UP elevator for take off, leveling off as the model becomes airborne.



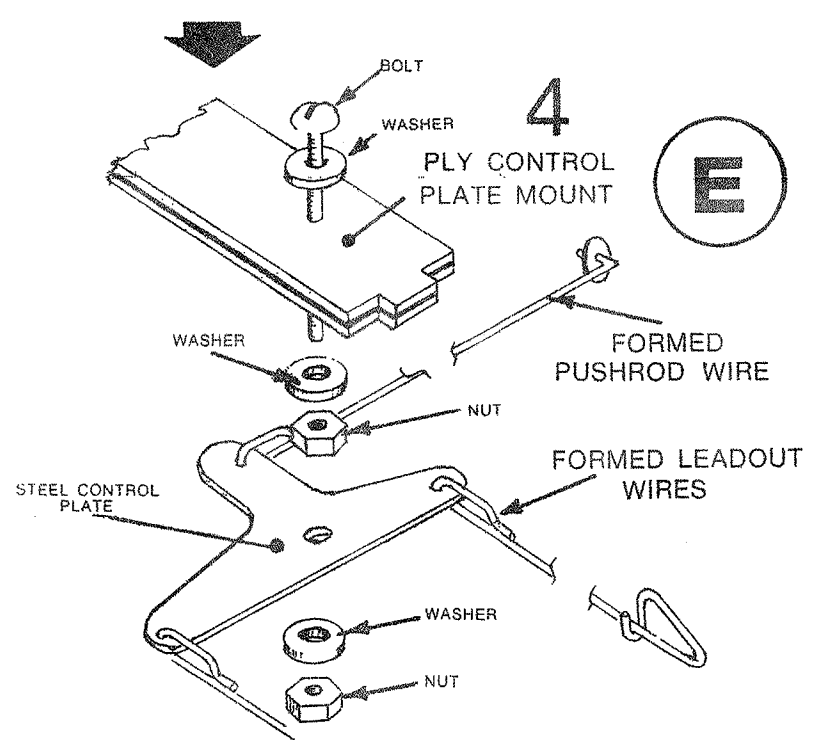
AUSTRALIA'S GREATEST NAME
 IN MODEL AIRCRAFT

TAILPLANE ASSEMBLY

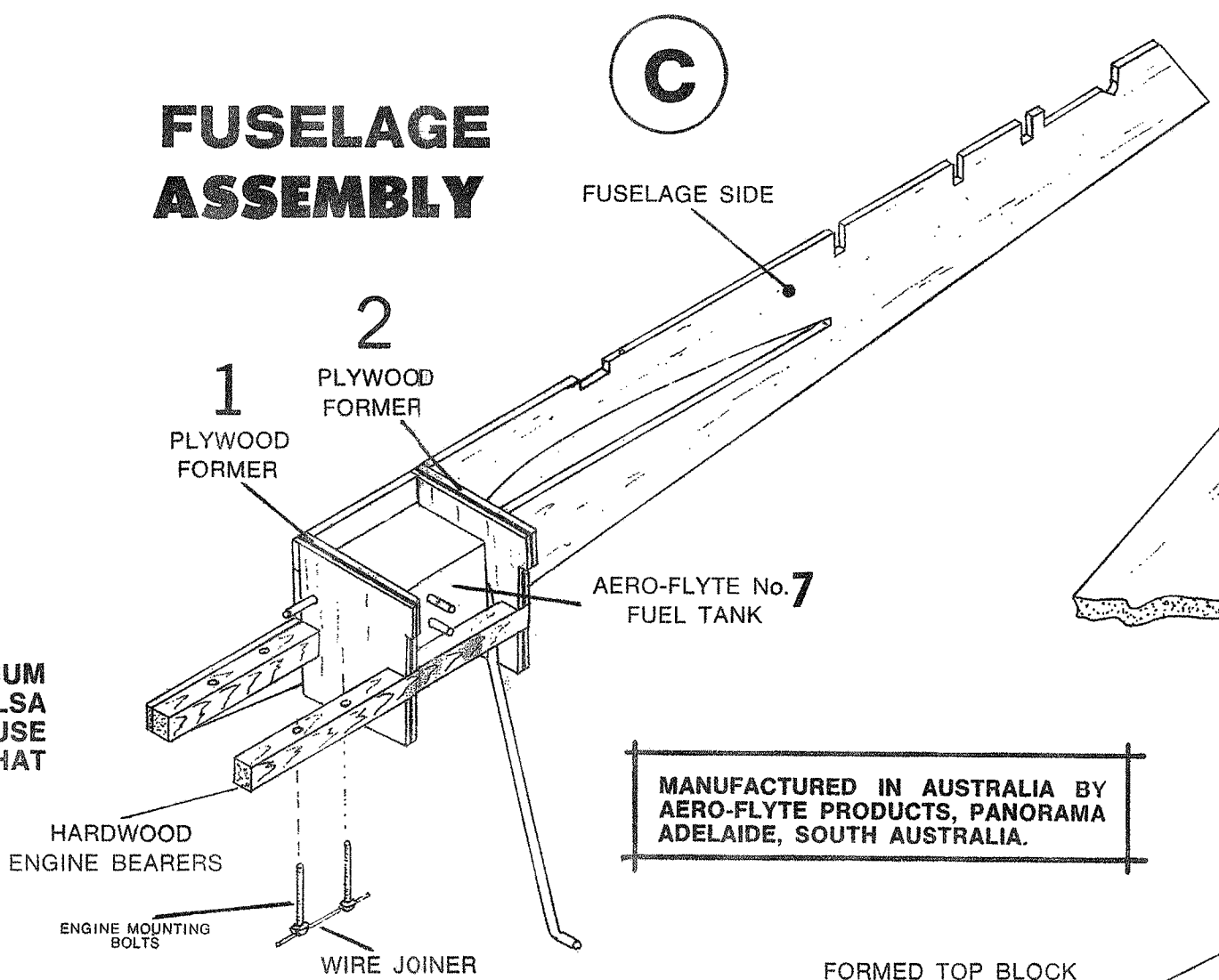


FOR FAST DRYING AND MAXIMUM STRENGTH USE AERO-FLYTE BALSA CEMENTS. C17 FOR NORMAL USE AND C23 FOR JOINTS WHERE THAT LITTLE EXTRA GRIP IS NEEDED.

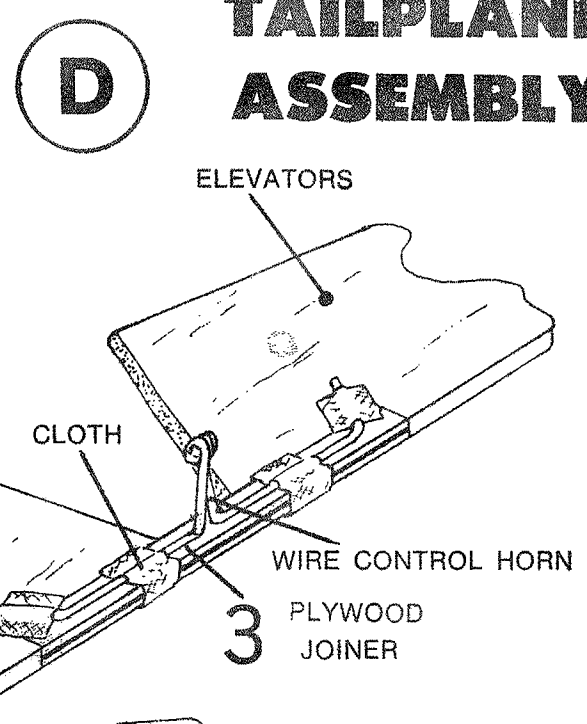
CONTROL INSTALLATION DETAIL



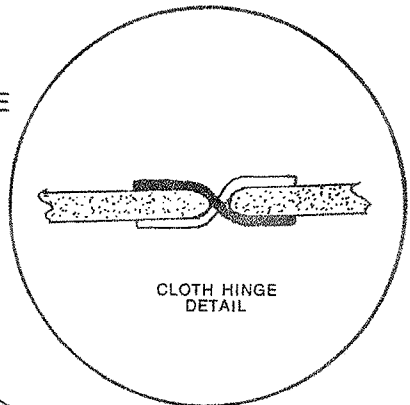
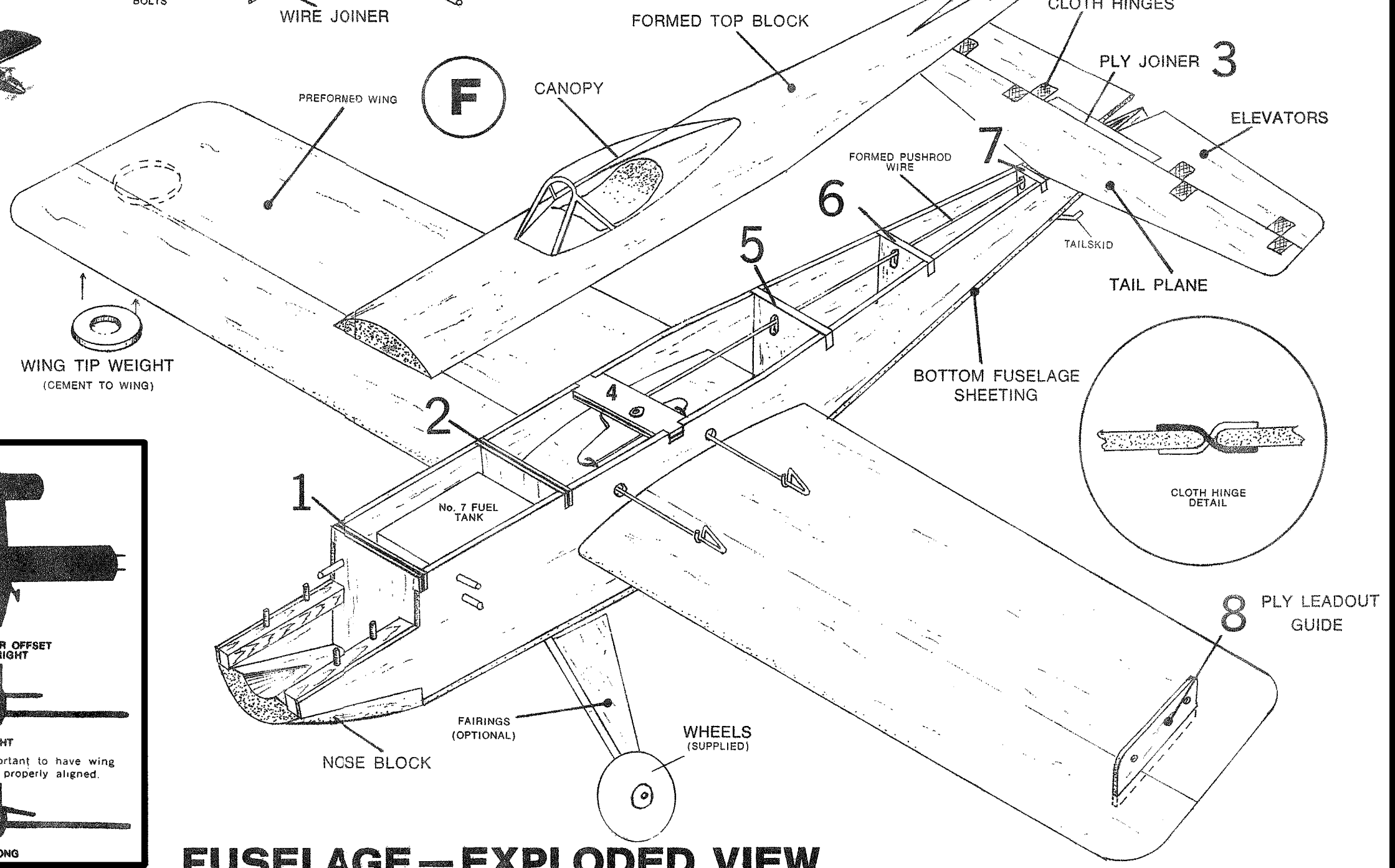
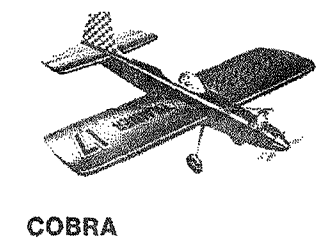
FUSELAGE ASSEMBLY



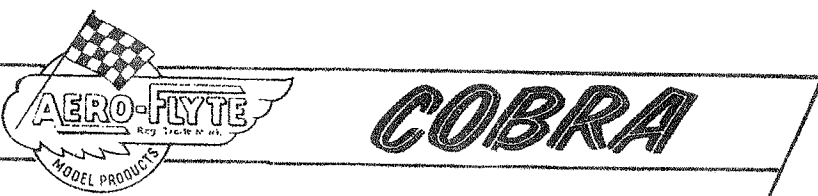
MANUFACTURED IN AUSTRALIA BY AERO-FLYTE PRODUCTS, PANORAMA ADELAIDE, SOUTH AUSTRALIA.



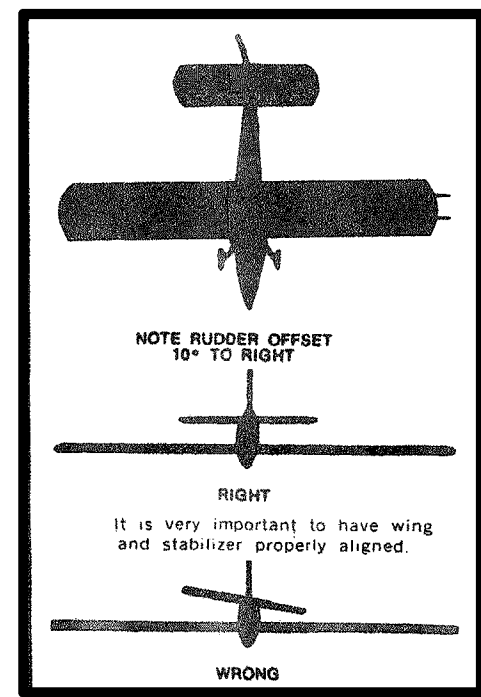
FIN 9
FIN 10
NOTE RUDDER OFFSET 10° TO RIGHT



THIS KIT CONTAINS
GRADE AAA BALSWOOD
EXCLUSIVE TO AERO-FLYTE



FULLY PREFABRICATED CONTROL LINE STUNT TRAINER FOR .15 c.i. (2.5 c.c.) ENGINES
WINGSPAN 27 ins. LENGTH 17 ins.
KIT No. 105



FUSELAGE - EXPLODED VIEW