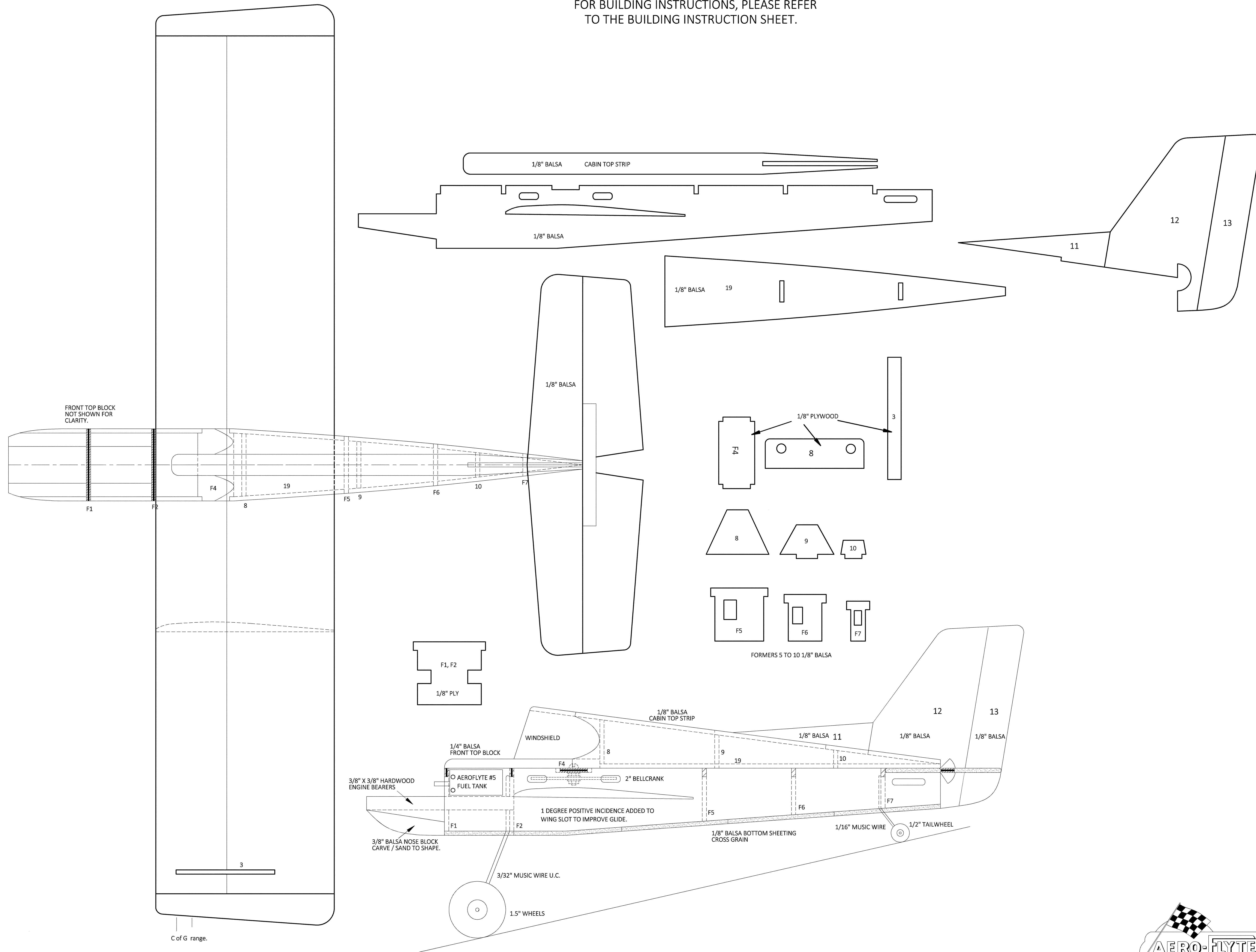


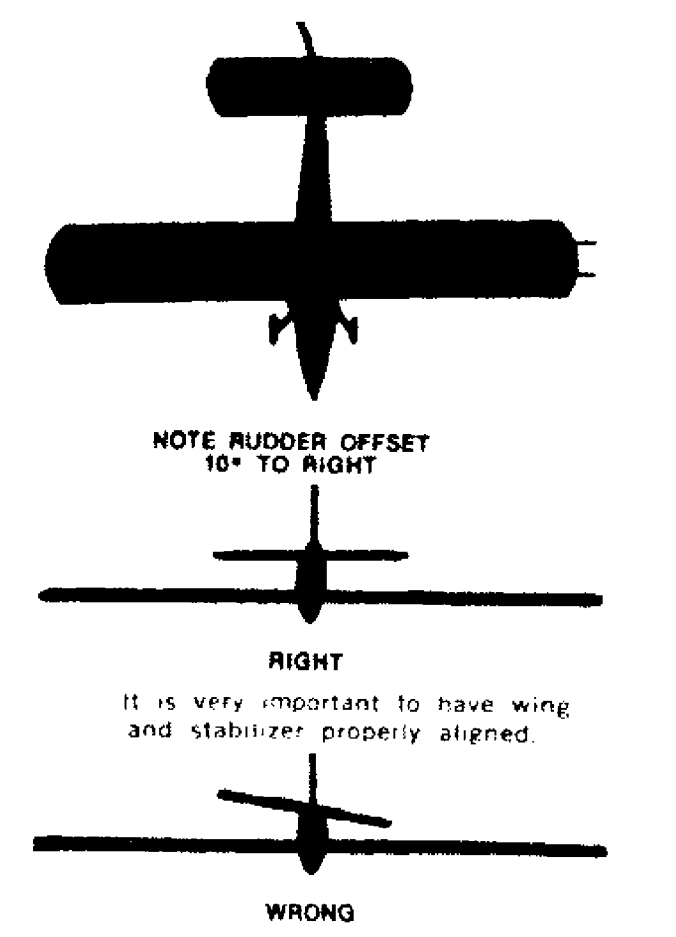
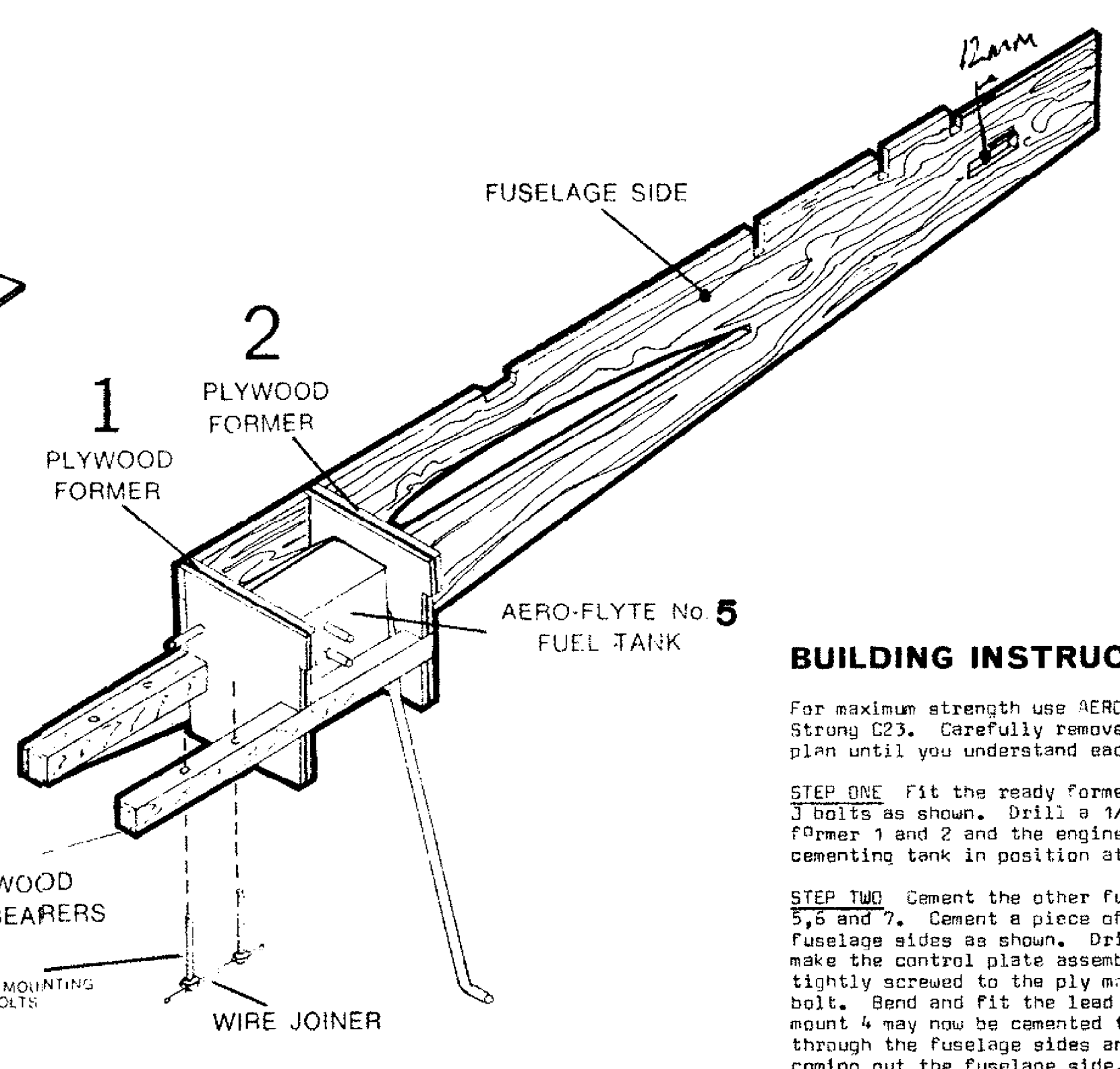
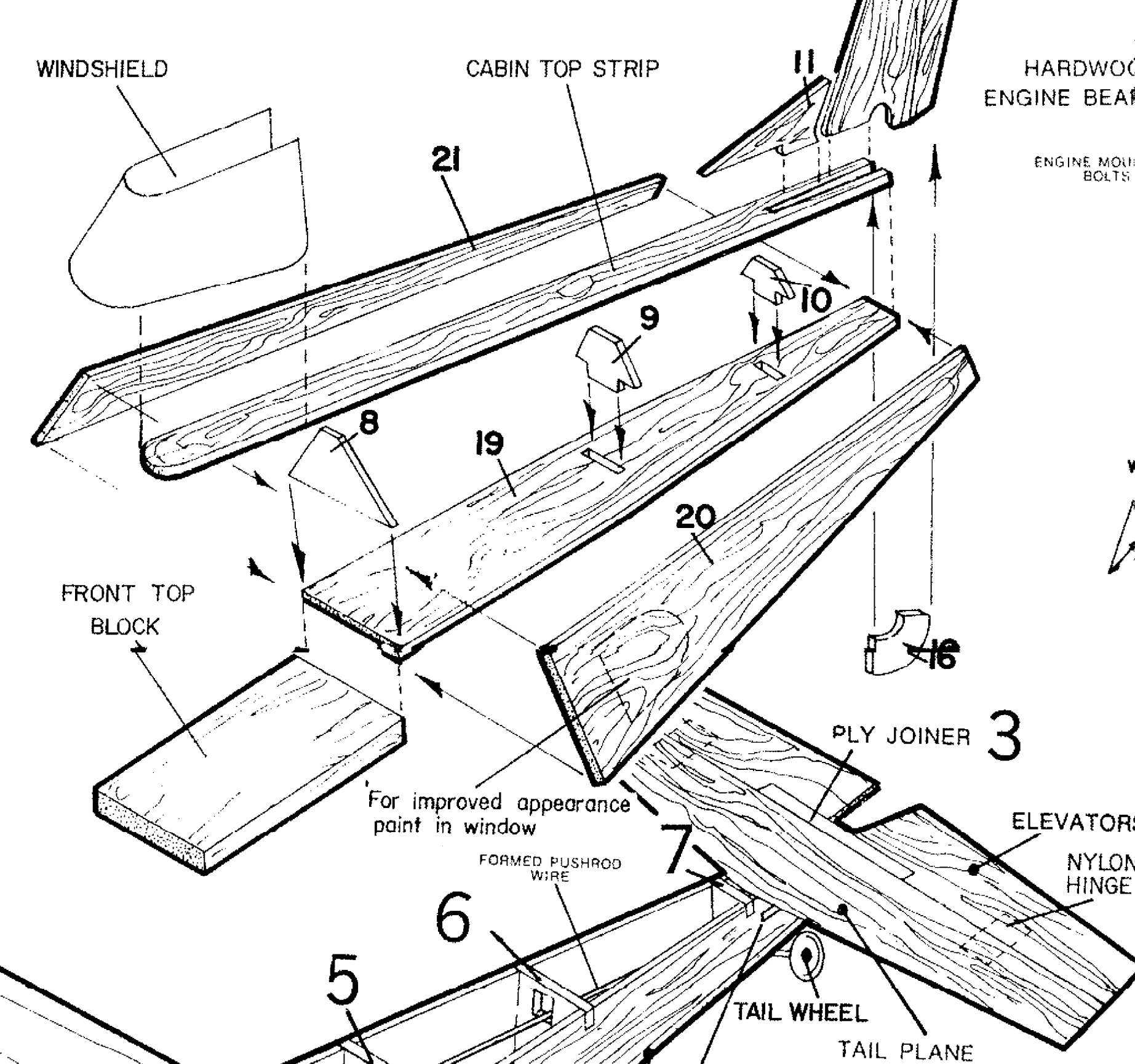
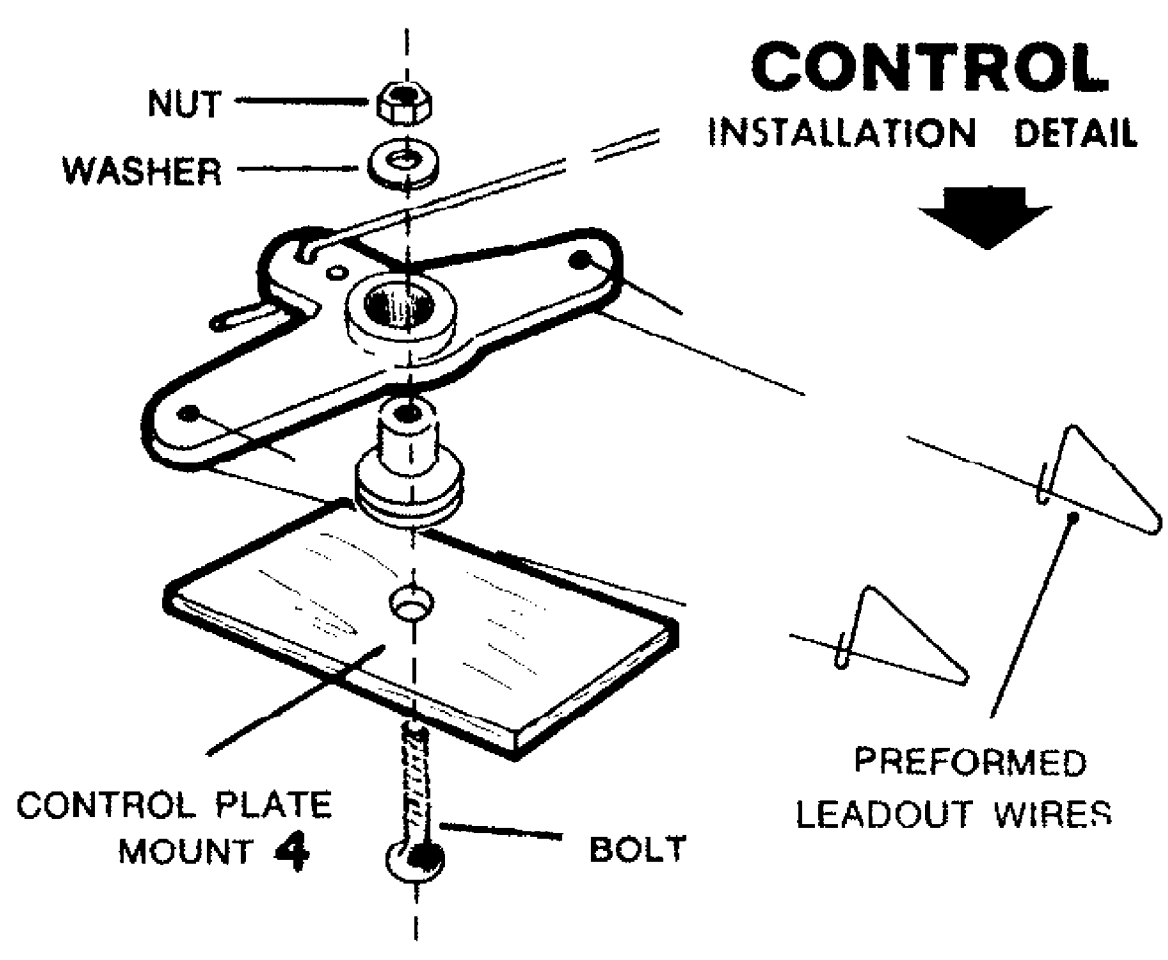
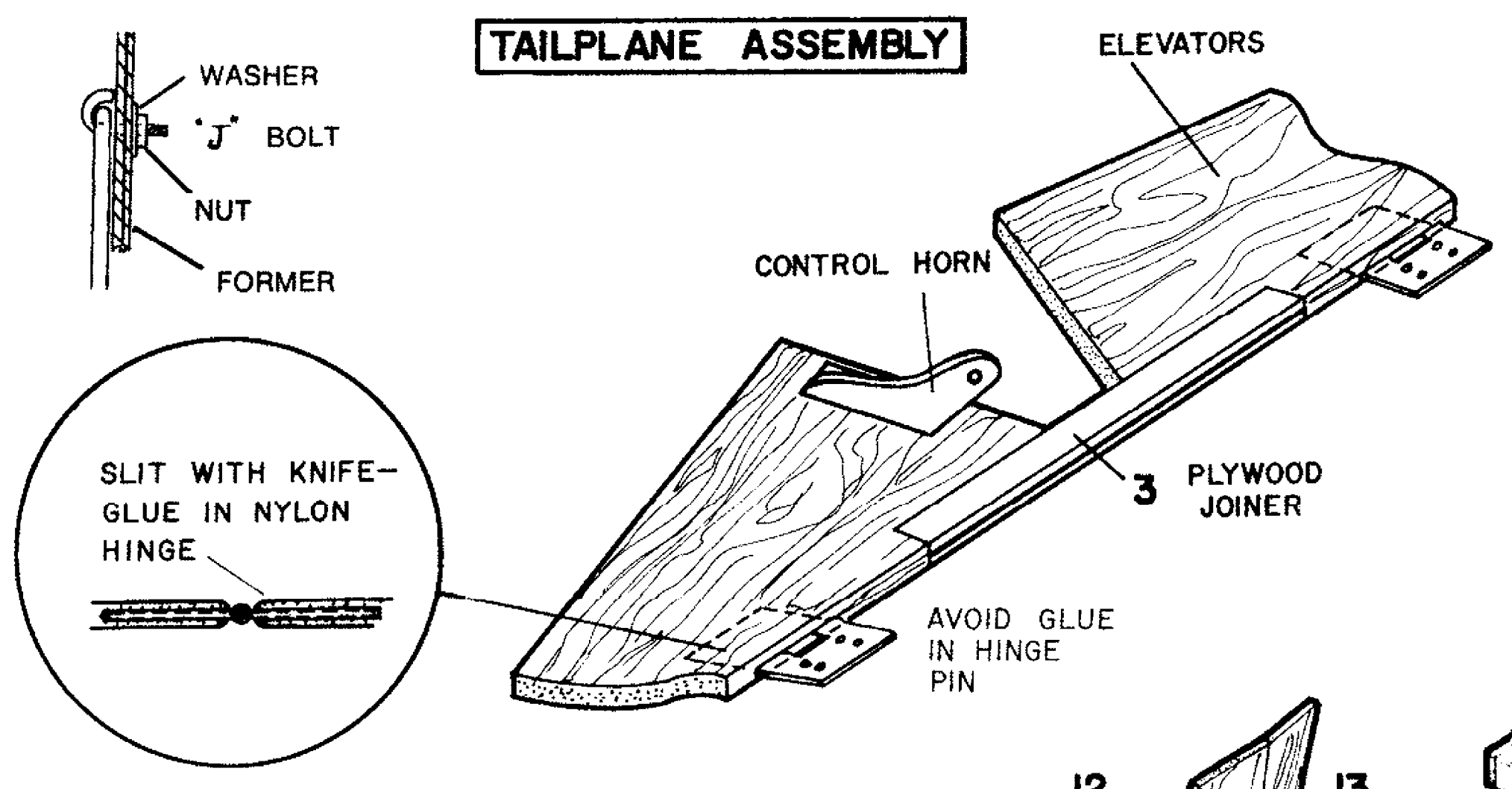
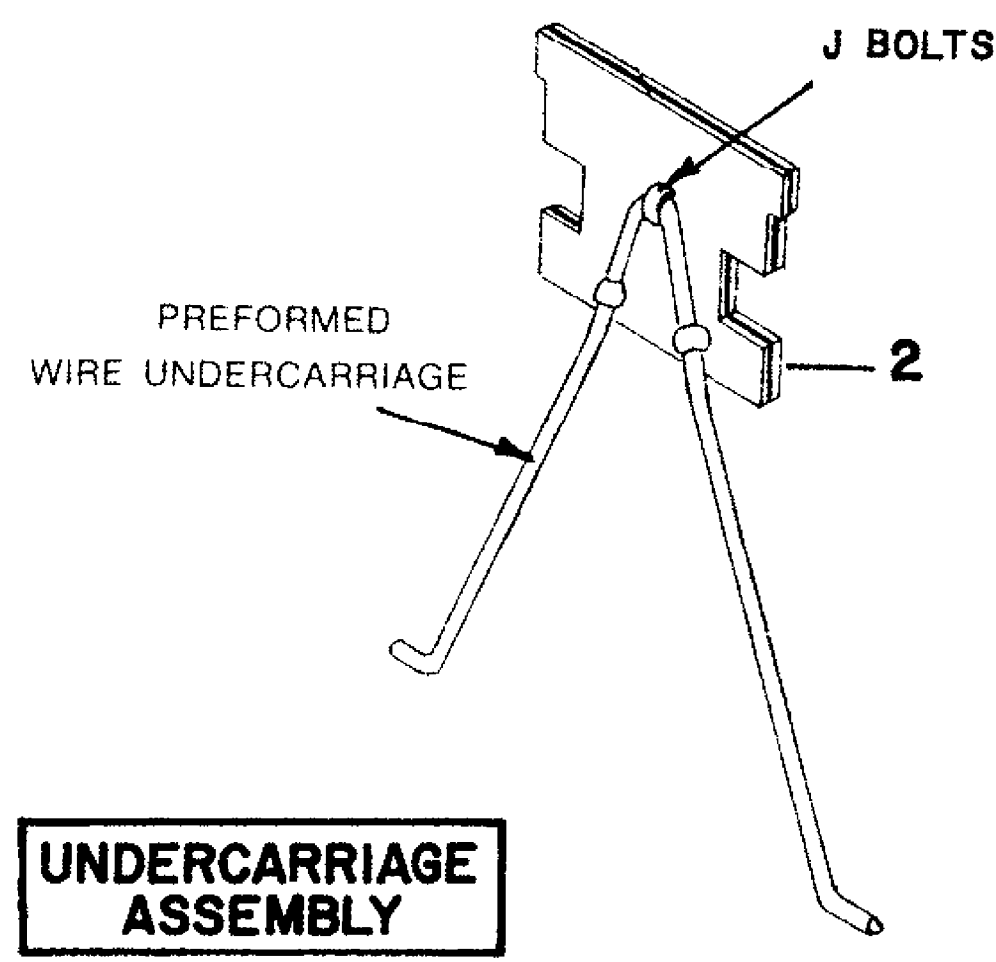
FOR BUILDING INSTRUCTIONS, PLEASE REFER TO THE BUILDING INSTRUCTION SHEET.



No plan was provided for the Cherokee by AeroFlyte. This plan may not be an exact replication but is as close as can be estimated from the template outlines provided. The Cherokee did not glide well and for this reason I have shown the wing slot at 1 degree positive incidence to help with the glide. Increased wing area will also help. The undercarriage is shown canted forward to minimise nose-overs on landing. The Instruction Sheet shows the control horn mounted well back from the hinge line of the elevator. Make sure you install your control horn with the pushrod hole exactly over the hinge line.



**CHEROKEE**  
**KIT No. 105**



**BUILDING INSTRUCTIONS**

For maximum strength use AERO-BALSA CEMENTS, either normal C17 or Super Strong C23. Carefully remove all parts from the diecut sheets, and study the plan until you understand each stage of construction of your model.

**STEP ONE** Fit the ready formed undercarriage securely to ply former 2 using 3 bolts as shown. Drill a 1/8" hole in 1 for the tank feed pipe and cement former 1 and 2 and the engine bearers to one fuselage side, blocking and cementing tank in position at the same time, as detailed.

**STEP TWO** Cement the other fuselage side to the nose assembly and add formers 5, 6 and 7. Cement a piece of scrap 1/8" balsa between the back edges of the fuselage sides as shown. Drill a 1/8" hole in the ply mount 4 (pin marked) and make the control plate assembly as shown. It is important that the bolt is tightly screwed to the ply mount but that the control plate moves freely in the bolt. Bend and fit the lead out wires and formed pushrod wire as shown. Ply mount 4 may now be cemented to the fuselage with the lead out wires coming through the fuselage sides and the pushrod going down through 5, 6 and 7 and coming out the fuselage side.

**STEP THREE** Place the two elevators on a flat surface and join them together with ply joiner 3. Bolt the nylon control horn at the location pin marked on the underside of the elevator (refer sketch). Attach the elevator assembly to the tail plane with the nylon hinges supplied (refer sketch). Fit the end of the wire pushrod through the control horn. Thoroughly check the controls for free movement of at least 35° up and down. Do not cement the tailplane to the fuselage at this stage.

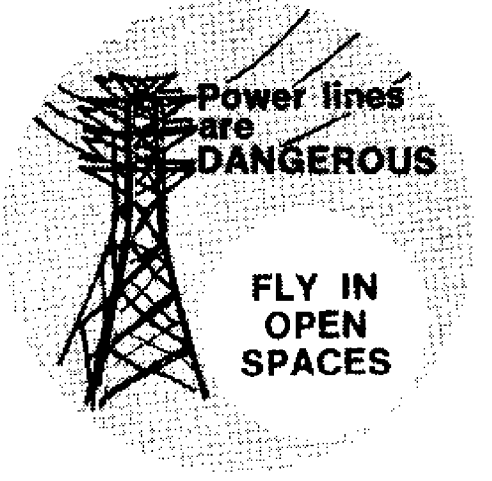
**STEP FOUR** Cement the two halves of the wing together and lay on a smooth, flat surface to dry. Fit each wing tip in place, glue securely and when dry, shape to the wing section. Slide through the fuselage, check for alignment and cement making sure that it is parallel with the tailplane. Fit the top platform 19 and the front top block. When dry, chamfer off the edges of the top block, and fit formers 8, 9 and 10. Take the cabin top strip (matched for fin location) and shape as shown on sketch. Cement this strip in position on top of formers 8, 9 and 10, with the rear of the strip locating at the trailing edge of the tailplane. When dry, chamfer the edges of this strip and fit and cement the top plate 21 and 24 in place. Complete construction by fitting 11, 12 and 13. ~~Check for correct fit of the tailplane as shown and bind with heavy cotton and cement the assembly to former No. 7. Note that the rear of fin (13) is 1/16" from the fin. The fin must maintain line location when flying. Cement the fin support 18 in place.~~

**FINISHING** Sandpaper the entire model to a smooth finish all over and apply one coat of dope. Sandpaper lightly and then tissue cover all over by cutting sections of tissue roughly to shape of the part to be covered and brush dope through the tissue so that it glues to the airframe. Smooth out wrinkles in the tissue and apply a final coat of dope. Cement windshield into place and paint the model with fuelproof enamel in the colours you choose. Fit the airwheels supplied and mount the engine of your choice, within the capacity recommended.

**BALANCE POINT** Your CHEROKEE should balance at a point between the leading edge of the wing and the front leadout wire. (Add weight as required).

The following accessories are tailor-made to suit your CHEROKEE:-

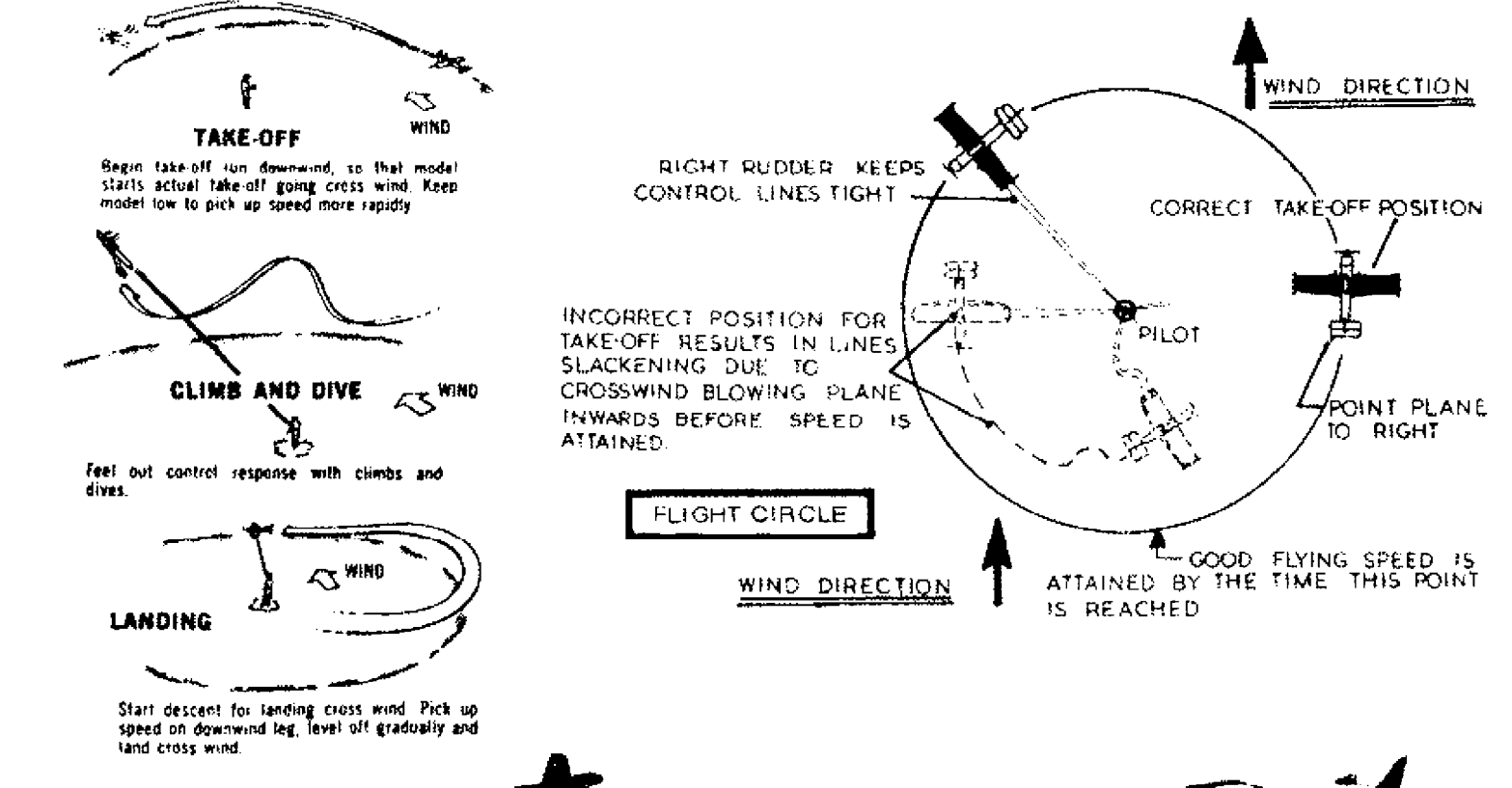
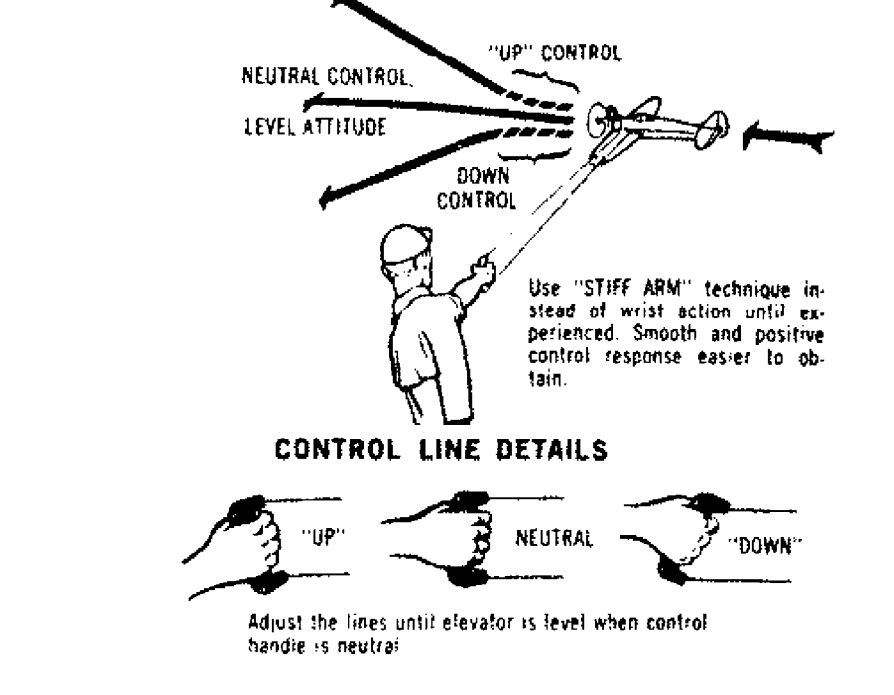
- Aero-Flyte No. 5 Fuel Tank, Aero-Flyte Nylon Control Handle, Aero-Flyte 2 in or 30m Laystrate Wire, Aero-Flyte Full Strength Dope, Glaplug Fuel.



**CHEROKEE KIT No.105**



**HOW TO FLY**



**MODEL AIRCRAFT KITS**

**FLYING CONTROLINE MODELS**

- MUSTANG SCALE**: Semi-scale stunt model of this famous WWII aircraft. 26" wing span detailed plan, fully prefabricated. Suits 1/16" or 1/8" engines.
- CURTISS WAR HAWK**: Enjoy semi-scale appearance together with top performance. A beautiful design with National winning performance. 54" wing span for 3/32" to 1/8" (1/16" - 3/32") engines.
- AVENGER**: The ultimate in stunt control line models. A beautiful design with National winning performance. 54" wing span for 3/32" to 1/8" (1/16" - 3/32") engines.