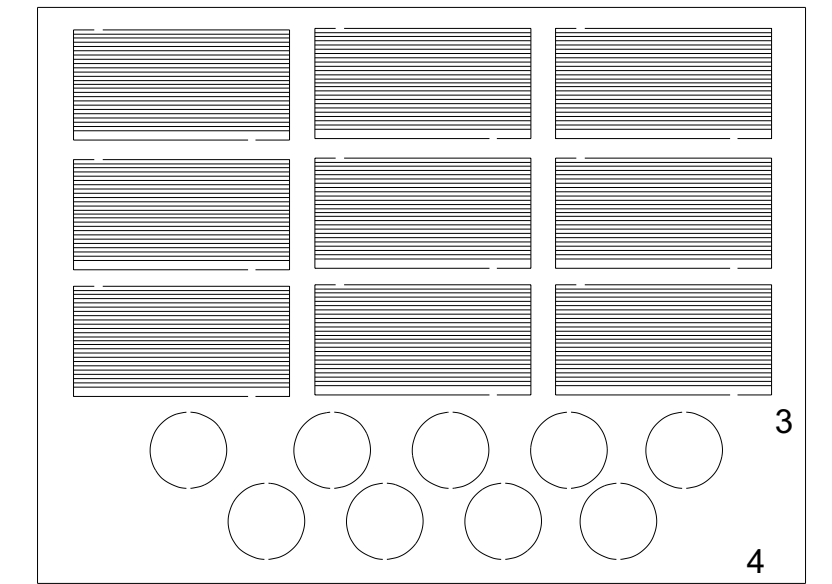
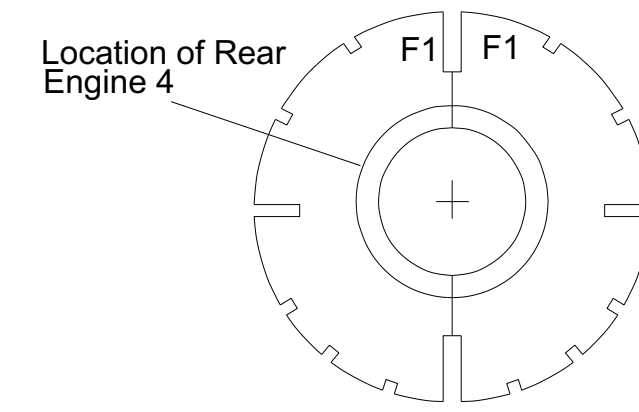
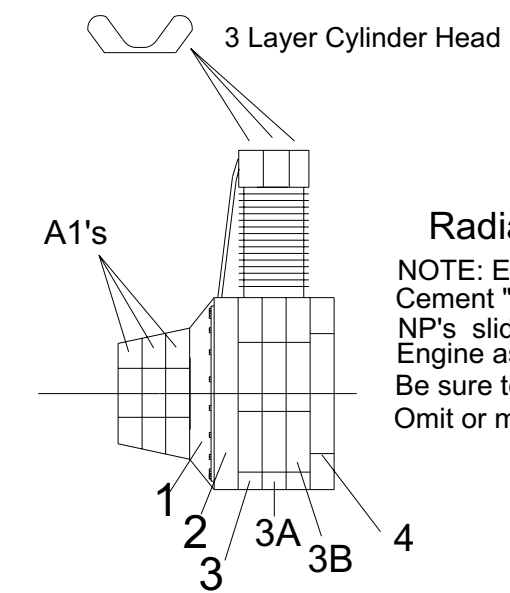


OPTIONAL

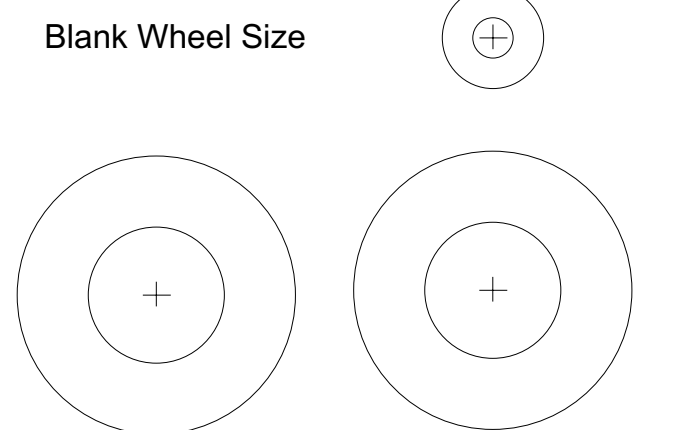


ENGINE CYLINDERS & CAPS
CARD STOCK



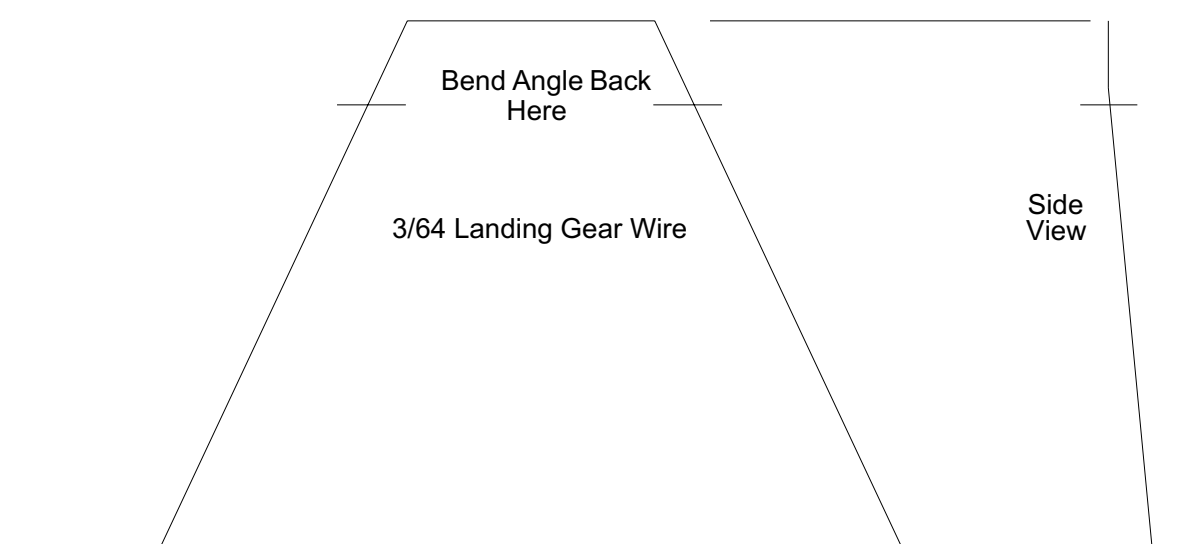
Radial Engine Assembly

NOTE: Engine Part 1 Serves as Nose Plug
Cement "NP's" together and to rear of part 1.
NP's slide into parts 2,3 & 3a to form nose plug.
Engine assembly is cemented cross grained on F2.
Be sure to make the nose plug a snug fit on RP models.
Omit or modify engine on electric motor installations



Blank Wheel Size

Tail Wheel Wire



Bend Angle Back Here

3/64 Landing Gear Wire

Side View