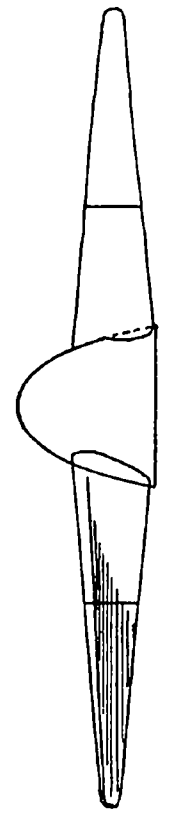
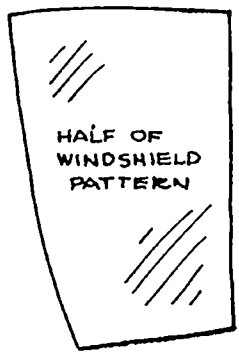


2



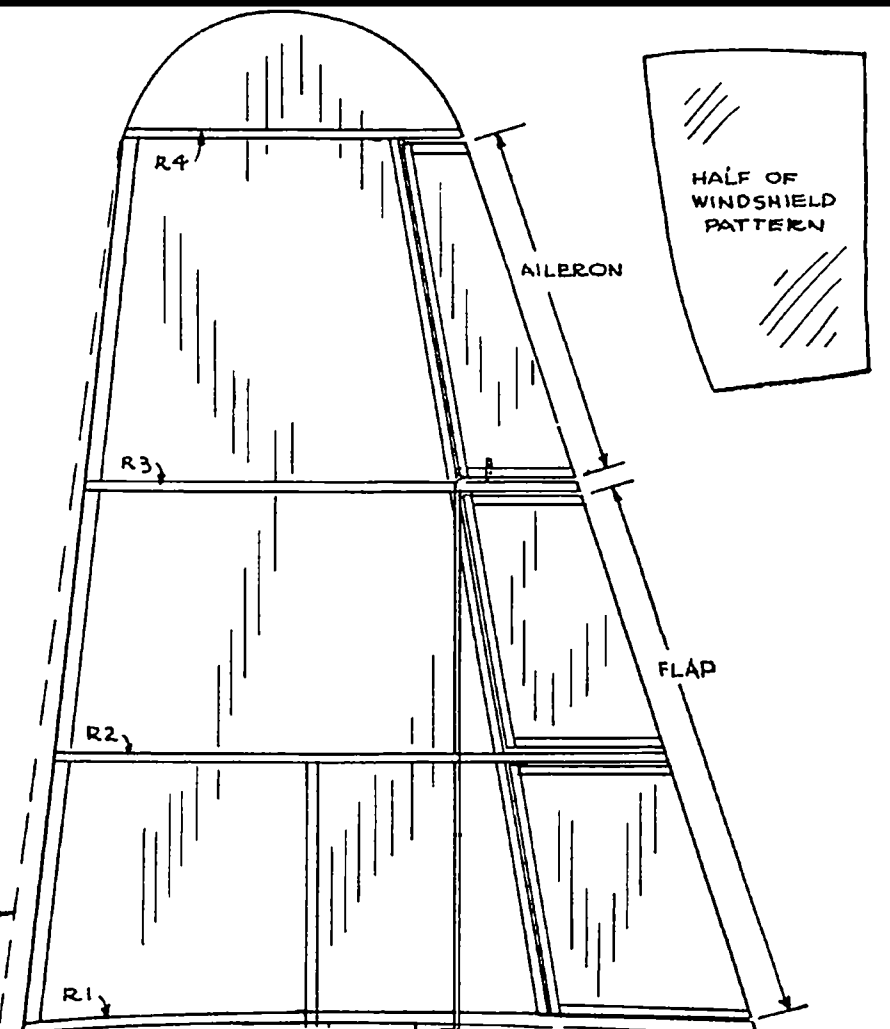
SCALE PROPELLER Side view



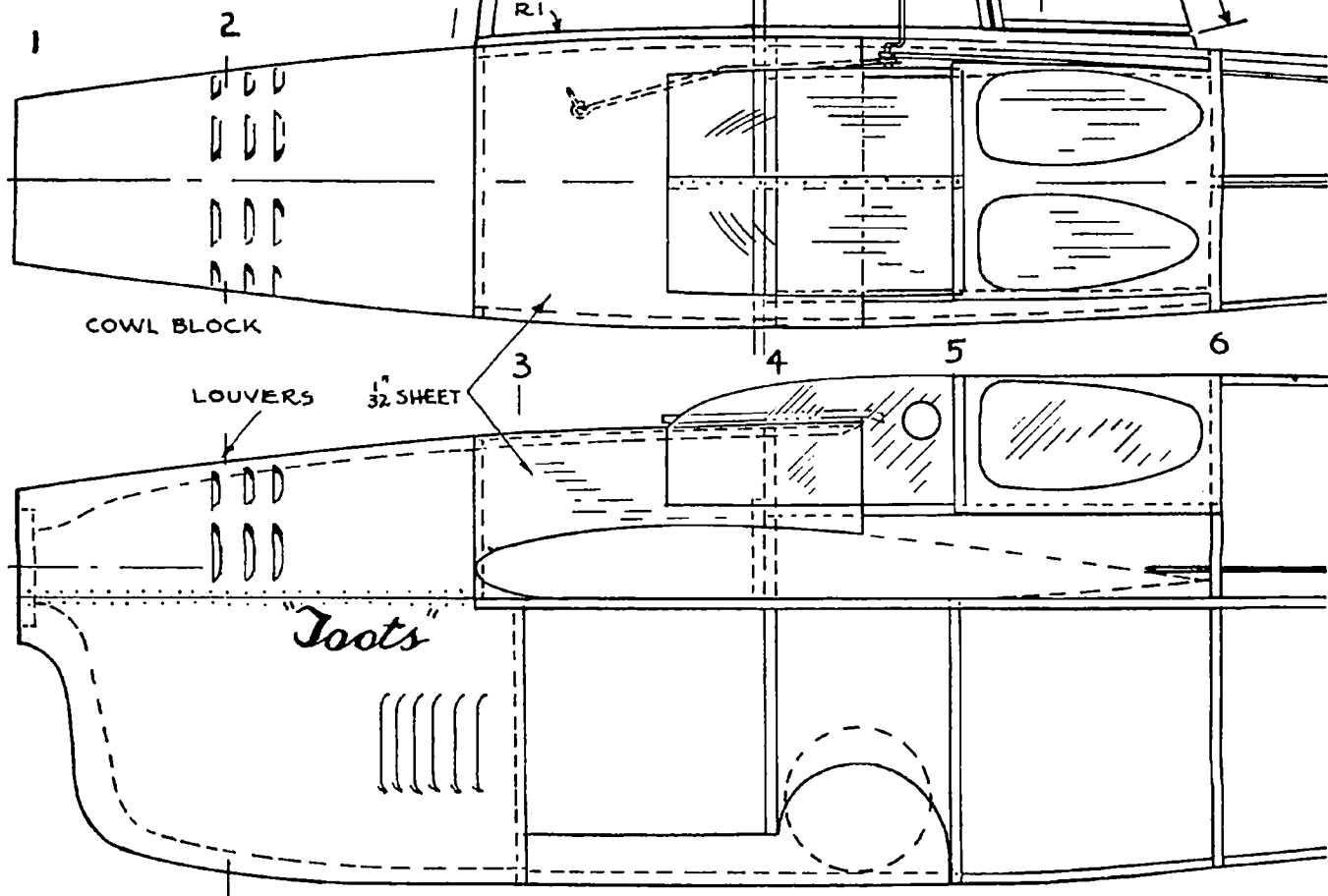
HALF OF WINDSHIELD PATTERN

AIR TRAILS

FLYING SCALE MODEL
of the *Folkerts Special*
SCALE $\frac{3}{4}$ " = 1'-0"



MAKE 4 PLYWOOD PANELS OVERSIZE

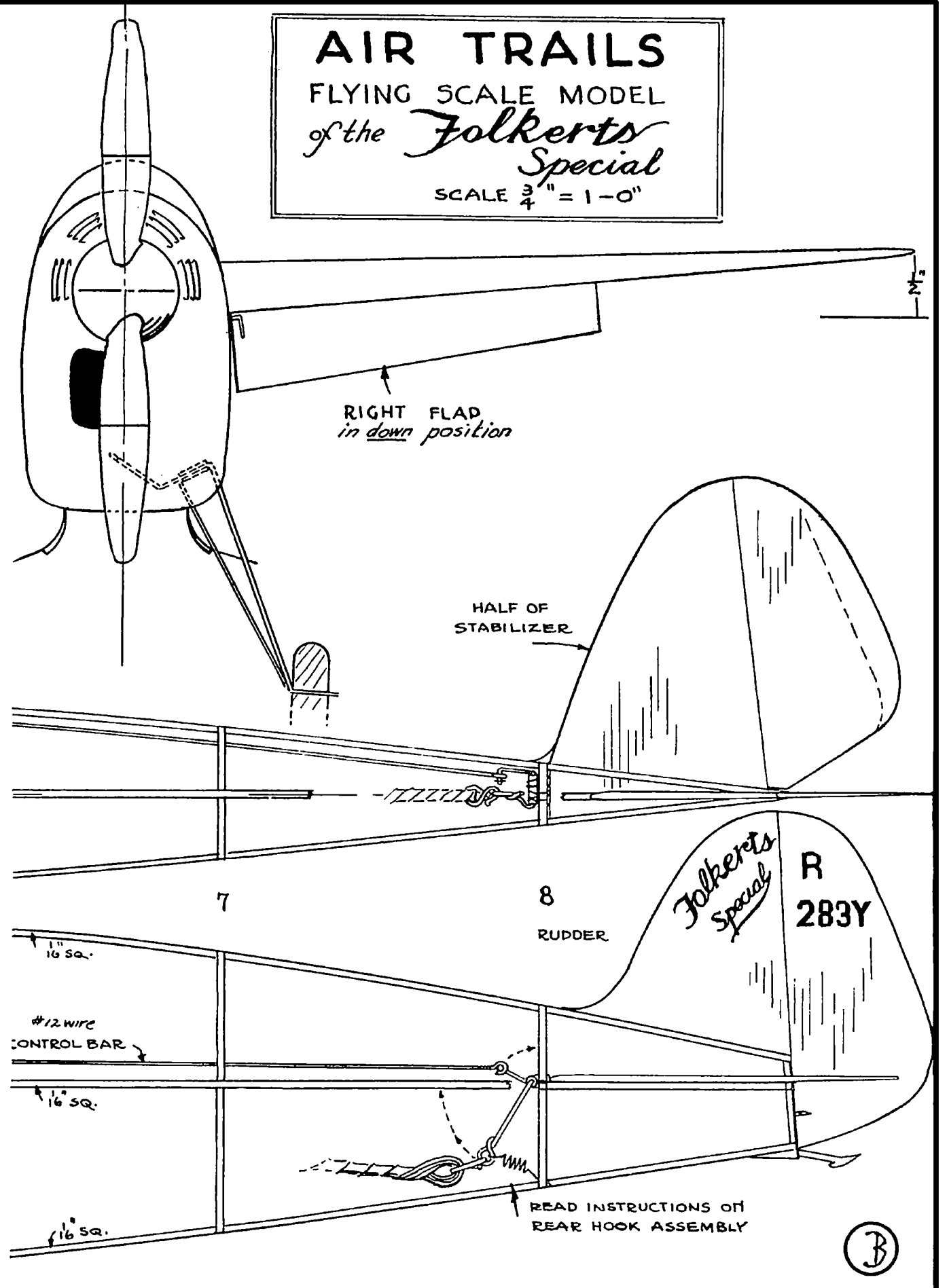


COWL BLOCK

LOUVERS

$\frac{1}{32}$ " SHEET

"Toots"



RIGHT FLAP in down position

HALF OF STABILIZER

RUDDER

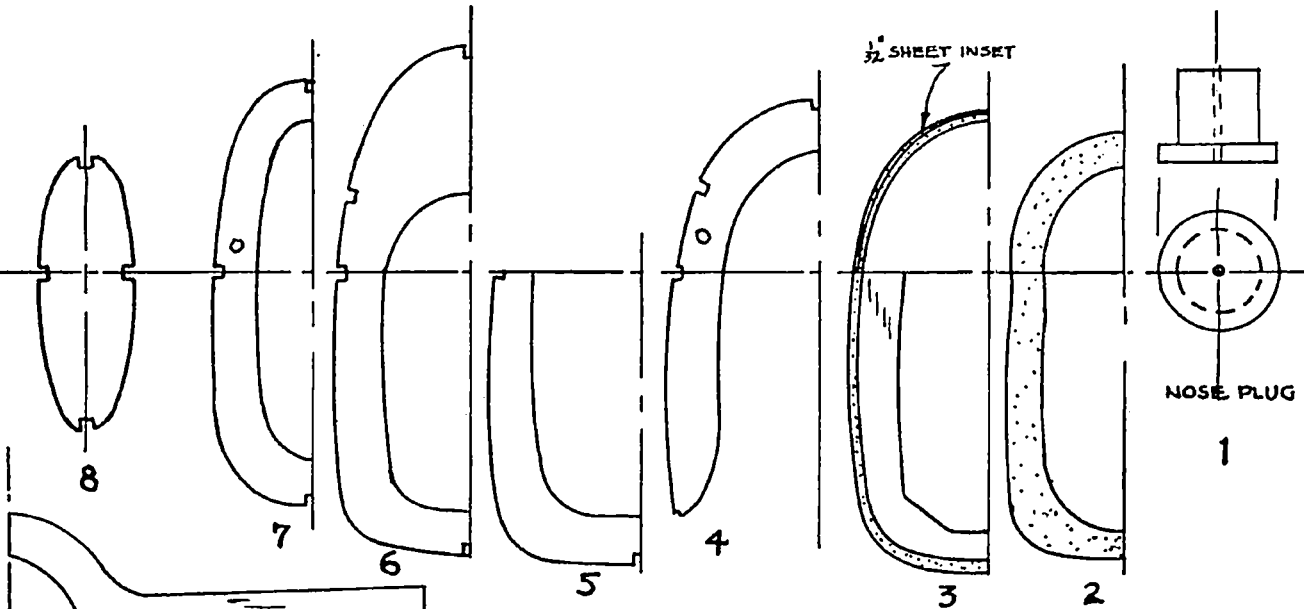
#12 WIRE CONTROL BAR

READ INSTRUCTIONS ON REAR HOOK ASSEMBLY

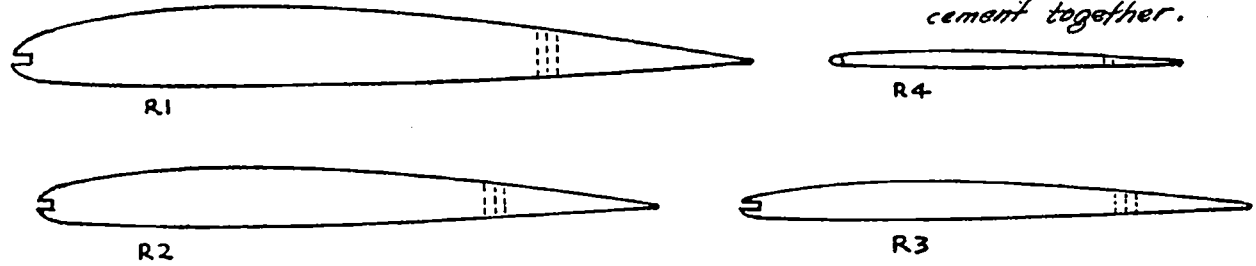
Folkerts Special

R 283Y

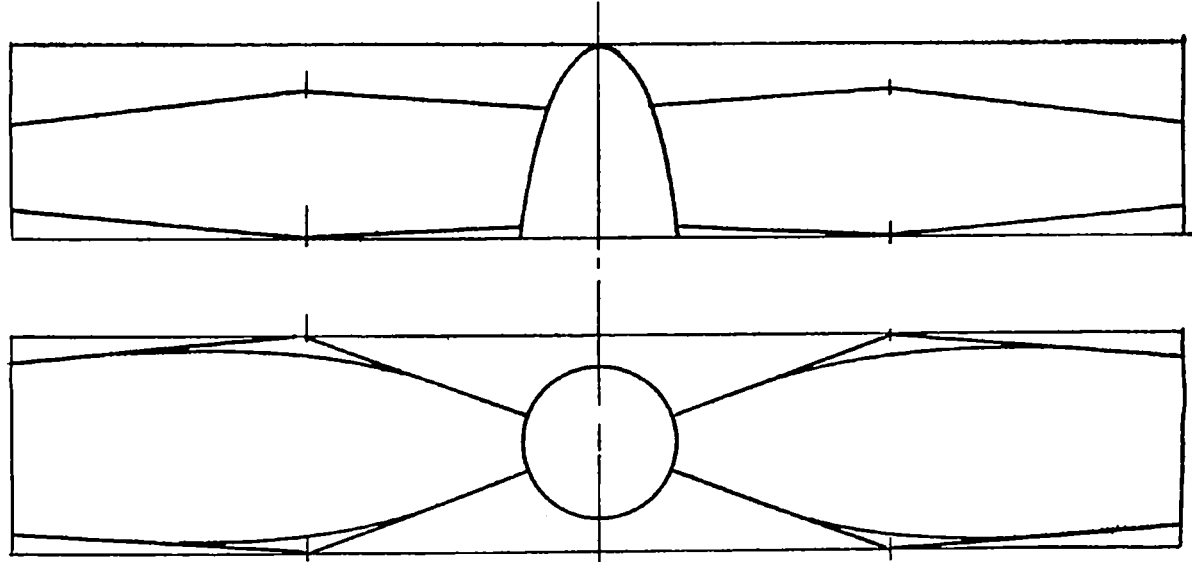
3



SECTIONS & FORMERS
 (plywood)
 Make two of each and
 cement together.



RIBS & PARTS
 Broken lines indicate spars and
 lengths of aileron & flap ribs.

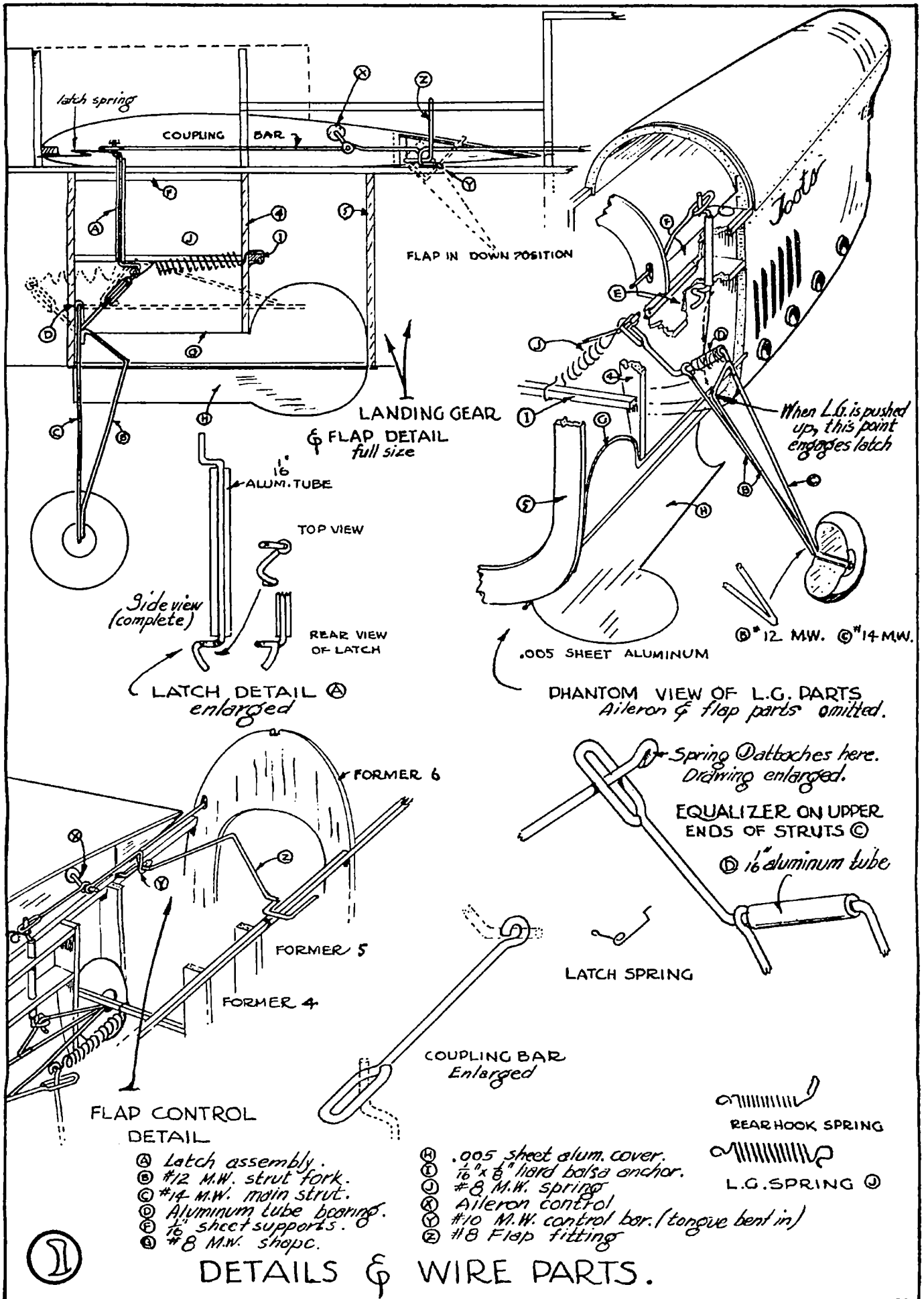


SPECIAL SPEED PROP.

BLOCK
 1" x 1 1/8" x 6"

Carve as a wooden type, leave
 hub thick - taper to tips.





latch spring

COUPLING BAR

FLAP IN DOWN POSITION

LANDING GEAR & FLAP DETAIL full size

1/16" ALUM. TUBE

TOP VIEW

Side view (complete)

REAR VIEW OF LATCH

LATCH DETAIL enlarged

PHANTOM VIEW OF L.G. PARTS
Aileron & flap parts omitted.

When L.G. is pushed up, this point engages latch

.005 SHEET ALUMINUM

ⓐ #12 M.W. ⓑ #14 M.W.

Spring ⓐ attaches here. Drawing enlarged.

EQUALIZER ON UPPER ENDS OF STRUTS ⓑ

ⓐ 1/16" aluminum tube

LATCH SPRING

COUPLING BAR Enlarged

REAR HOOK SPRING

L.G. SPRING ⓑ

FLAP CONTROL DETAIL

- ⓐ Latch assembly.
- ⓑ #12 M.W. strut fork.
- ⓒ #14 M.W. main strut.
- ⓓ Aluminum tube bearing.
- ⓔ 1/16" sheet supports.
- ⓕ #8 M.W. shpc.

- ⓖ .005 sheet alum. cover.
- ⓗ 1/16" x 3/8" hard balsa anchor.
- ⓓ #8 M.W. spring
- ⓙ Aileron control
- ⓚ #10 M.W. control bar. (tongue bent in)
- ⓛ #8 Flap fitting

DETAILS & WIRE PARTS.