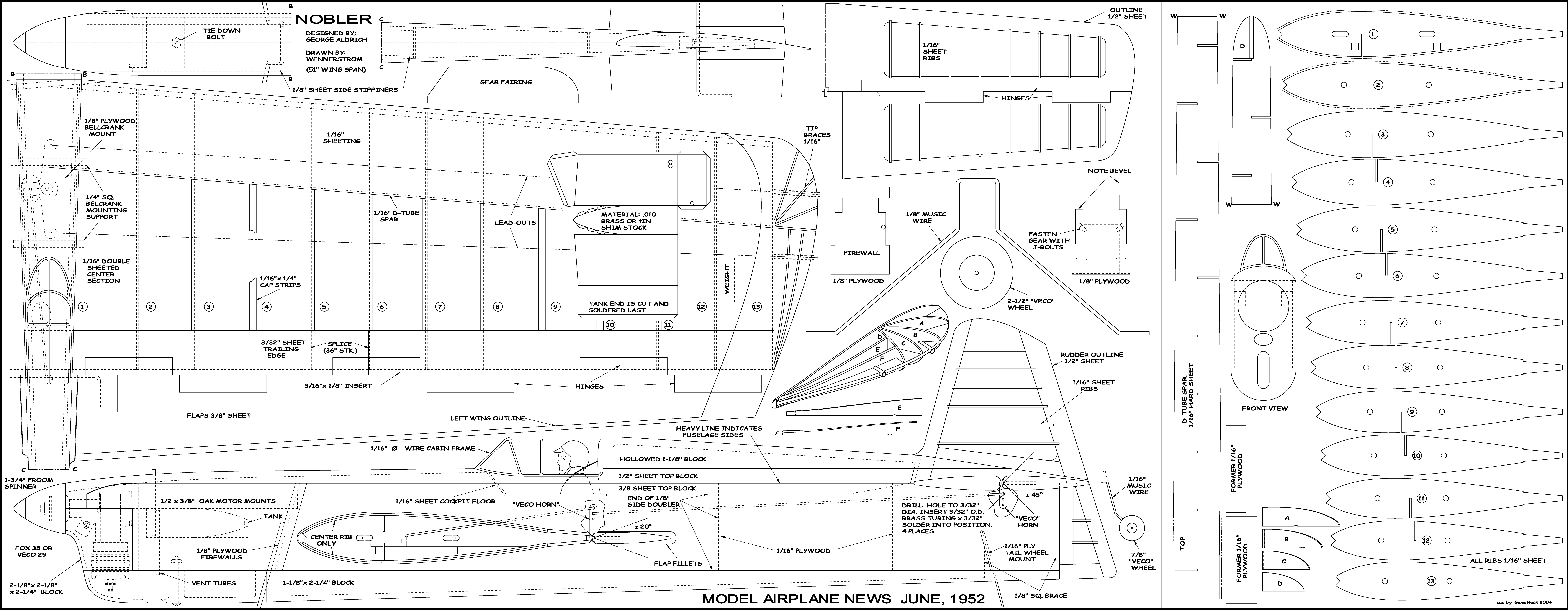


# NOBLER

DESIGNED BY:  
GEORGE ALDRICH  
DRAWN BY:  
WENNERSTROM  
(51" WING SPAN)



1/8" SHEET SIDE STIFFENERS

GEAR FAIRING

1/16" SHEET RIBS

HINGES

OUTLINE 1/2" SHEET

TIP BRACES 1/16"

FIREWALL 1/8" PLYWOOD

1/8" MUSIC WIRE

FASTEN GEAR WITH J-BOLTS

1/8" PLYWOOD

2-1/2" "VECO" WHEEL

RUDDER OUTLINE 1/2" SHEET

1/16" SHEET RIBS

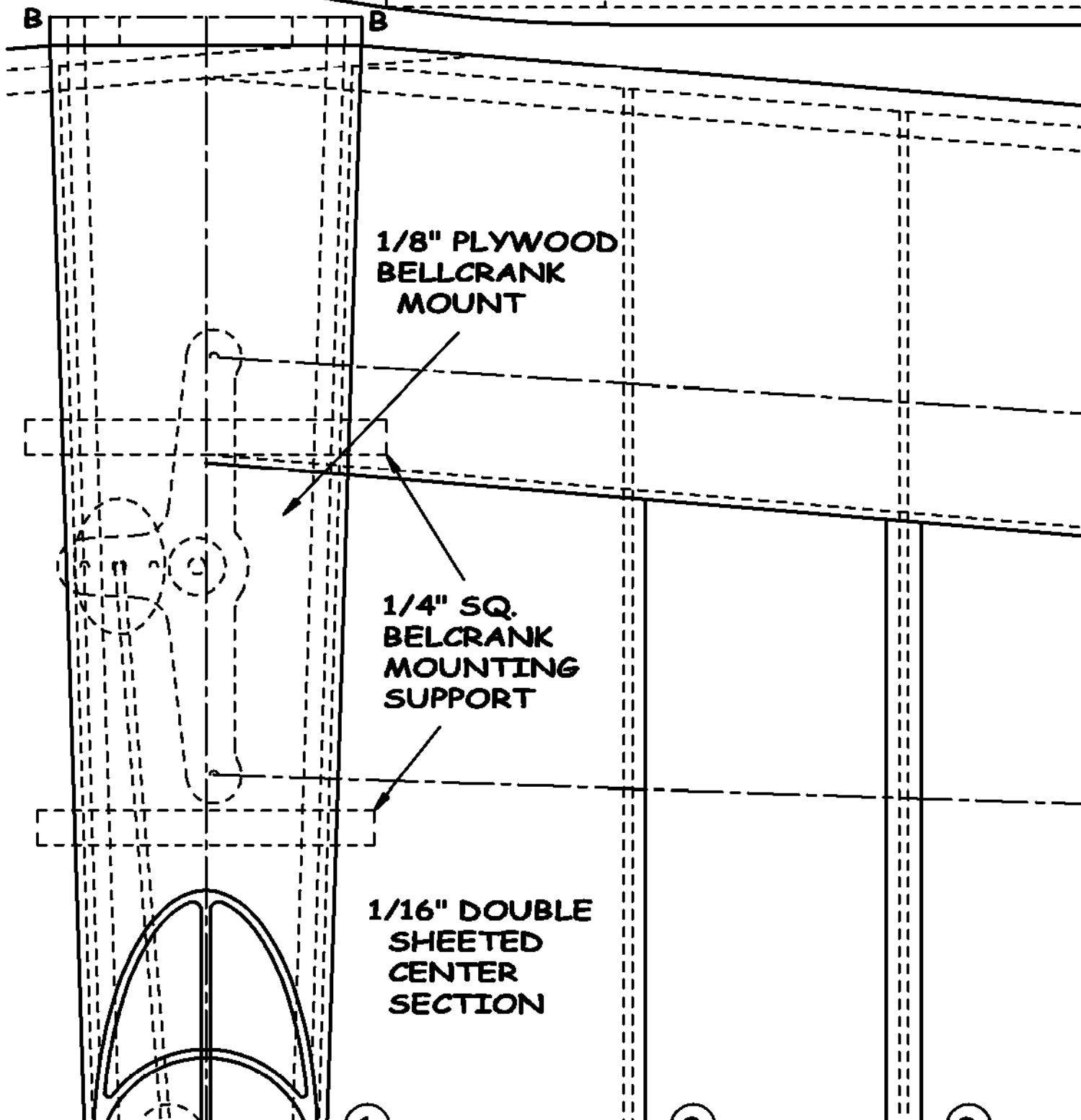
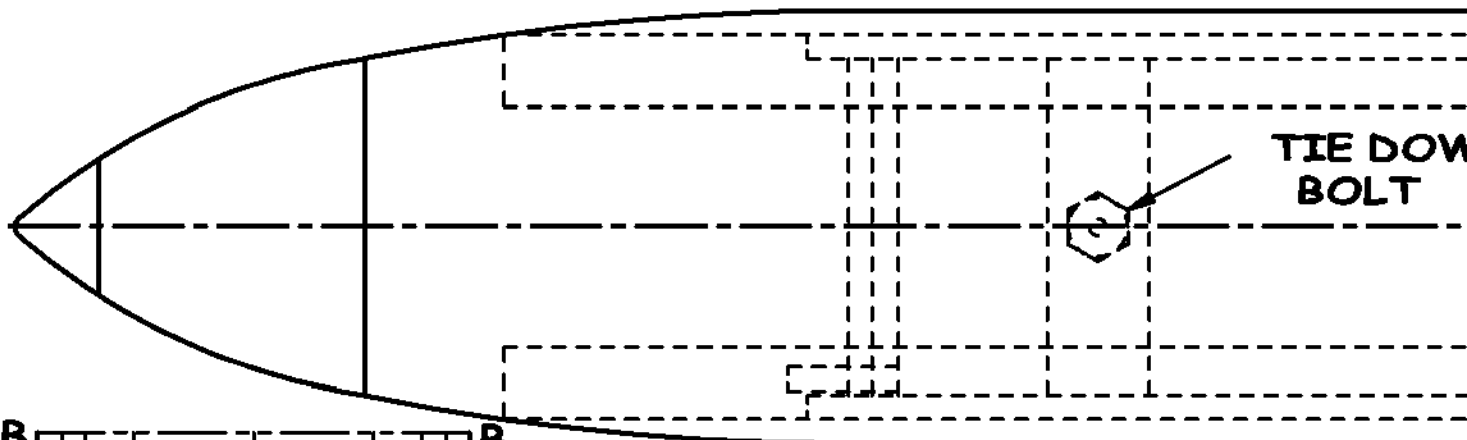
FRONT VIEW

D-TUBE SPAR 1/16" HARD SHEET

FORMER 1/16" PLYWOOD

FORMER 1/16" PLYWOOD

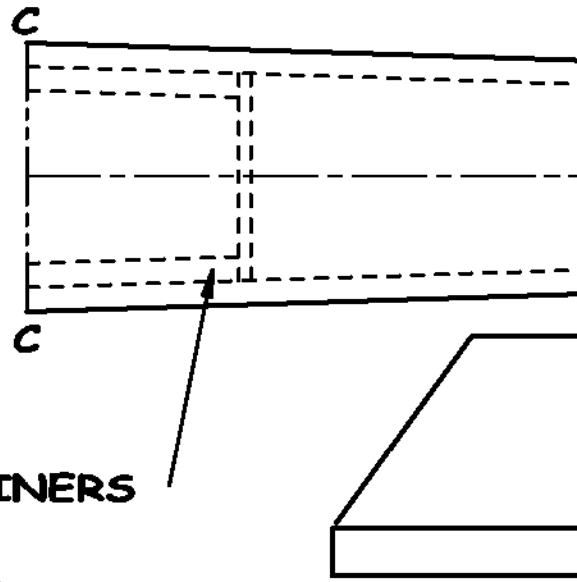
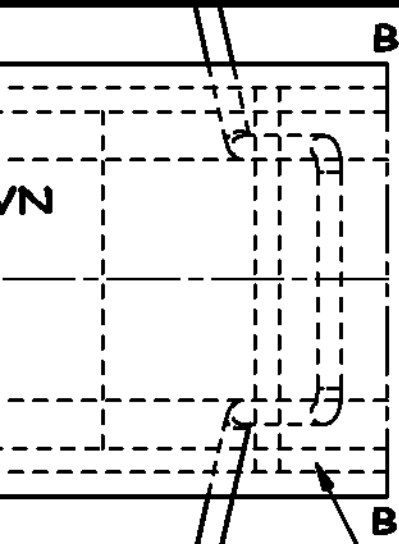
ALL RIBS 1/16" SHEET



# NOBLER

DESIGNED BY:  
GEORGE ALDRICH

DRAWN BY:  
WENNERSTROM  
(51" WING SPAN)

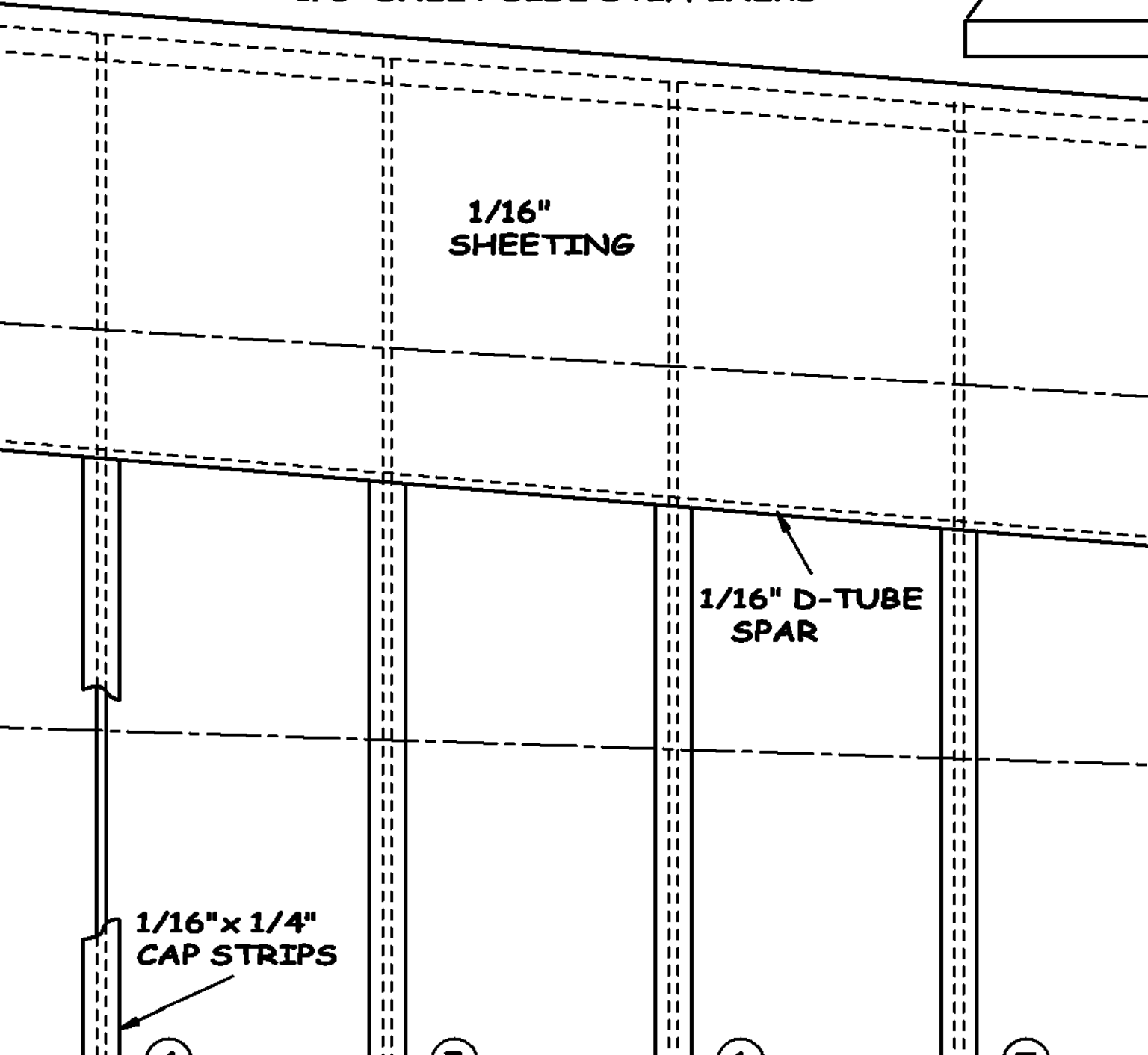


1/8" SHEET SIDE STIFFENERS

1/16"  
SHEETING

1/16" D-TUBE  
SPAR

1/16" x 1/4"  
CAP STRIPS



GEAR FAIRING

This technical drawing shows a gear fairing component and its assembly. The fairing is a curved, cylindrical part with a rounded end. It is shown in a perspective view, with dashed lines indicating its internal structure and how it fits onto a shaft. The shaft has a central hole and a smaller hole near the end. The fairing is labeled 'GEAR FAIRING'.

LEAD-OUTS

Two arrows point from the text 'LEAD-OUTS' to two vertical dashed lines that extend from the top of the fairing down to the bottom of the drawing. These lines represent the lead-outs for the assembly.

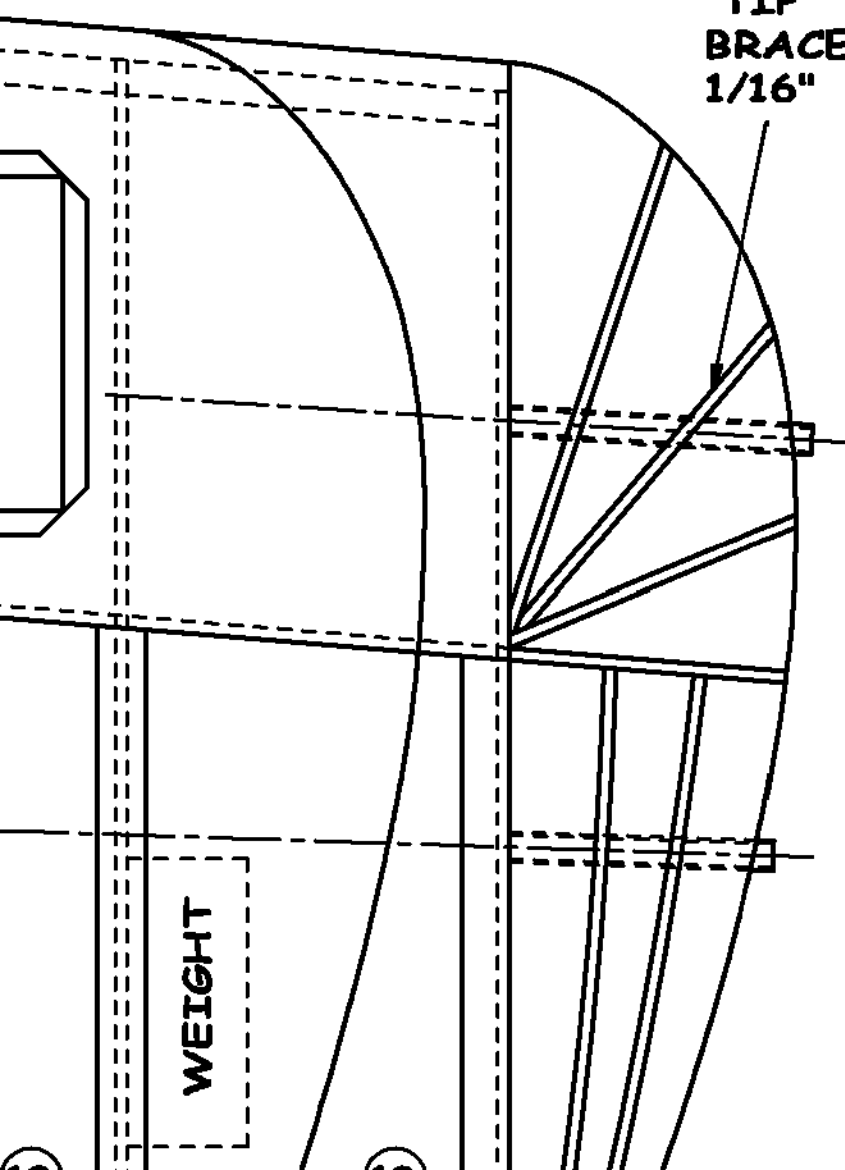
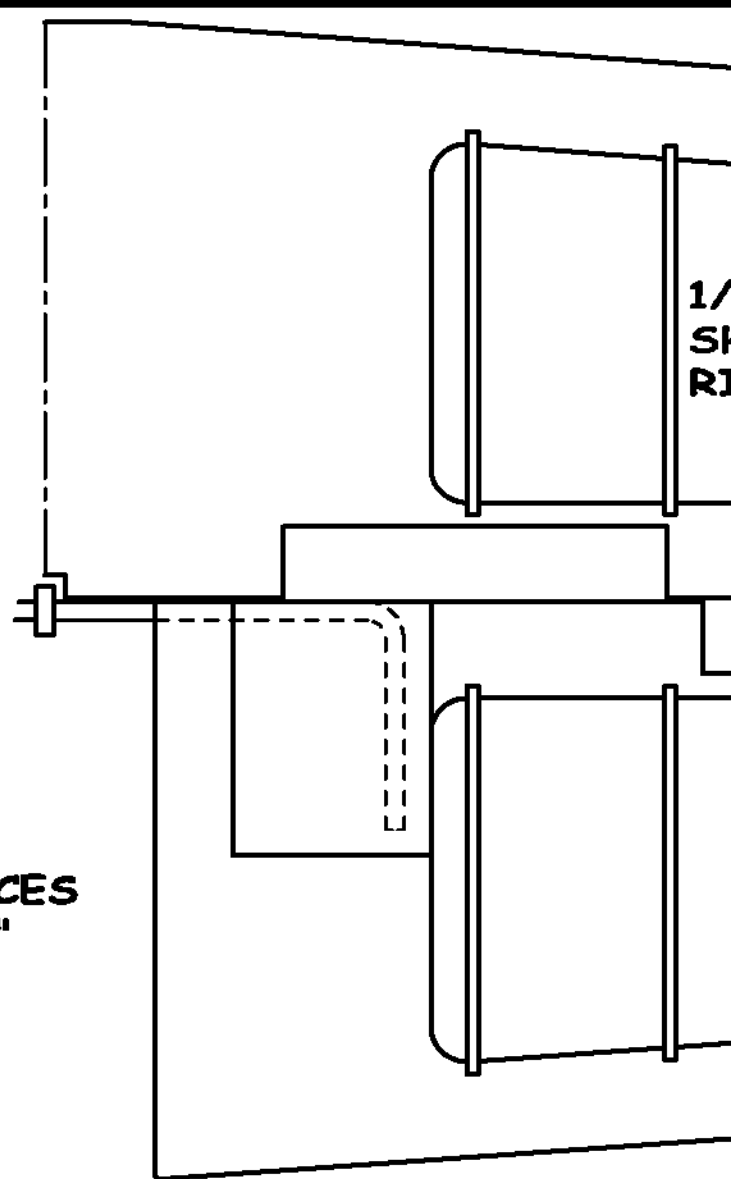
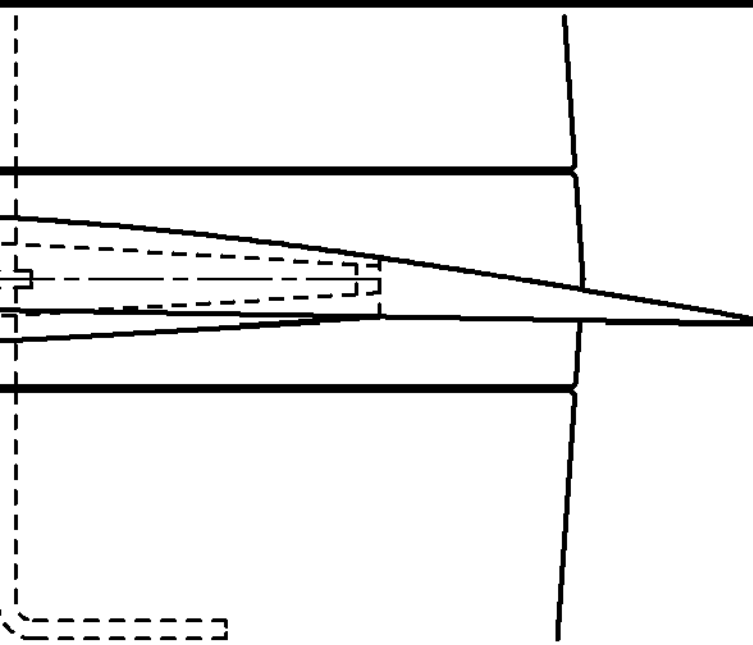
8

MATERIAL: .010  
BRASS OR TIN  
SHIM STOCK

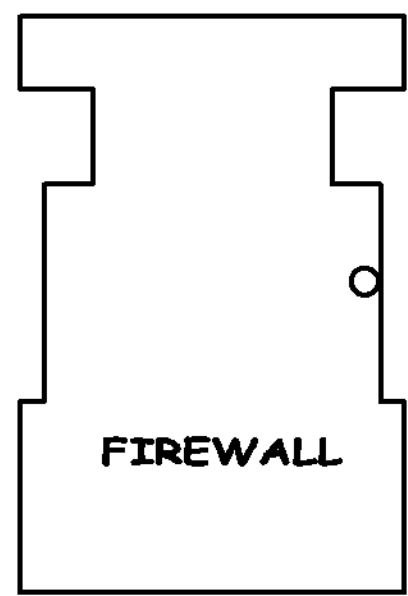
0

This section of the drawing shows a cross-section of the assembly. A trapezoidal shim is placed between the fairing and a larger component. The shim is labeled 'MATERIAL: .010 BRASS OR TIN SHIM STOCK'. The number '8' is written on the right side of the shim, and the number '0' is written on the right side of the larger component. The drawing uses solid lines for the components and dashed lines for the shim and lead-outs.

TANK END IS CUT AND



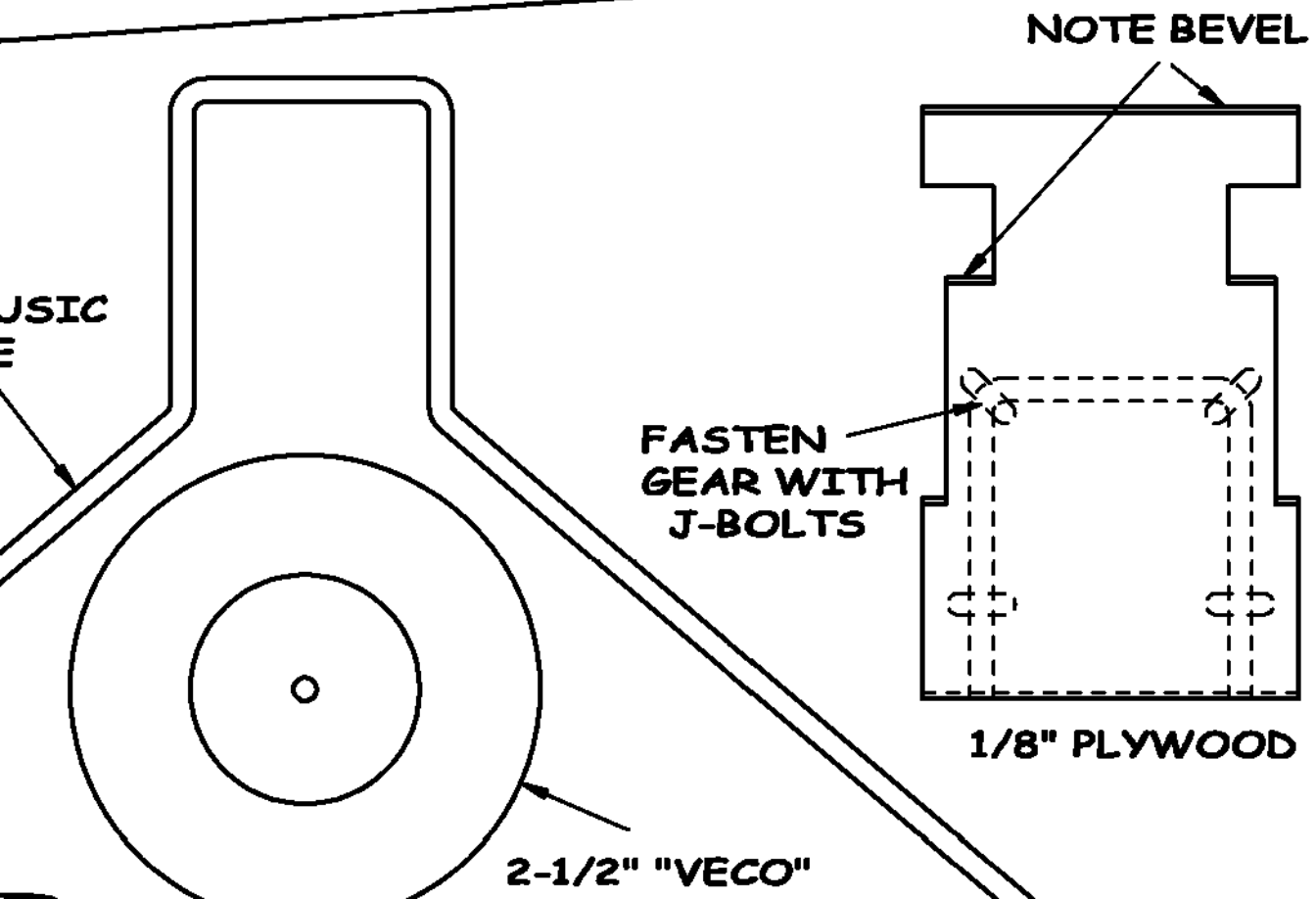
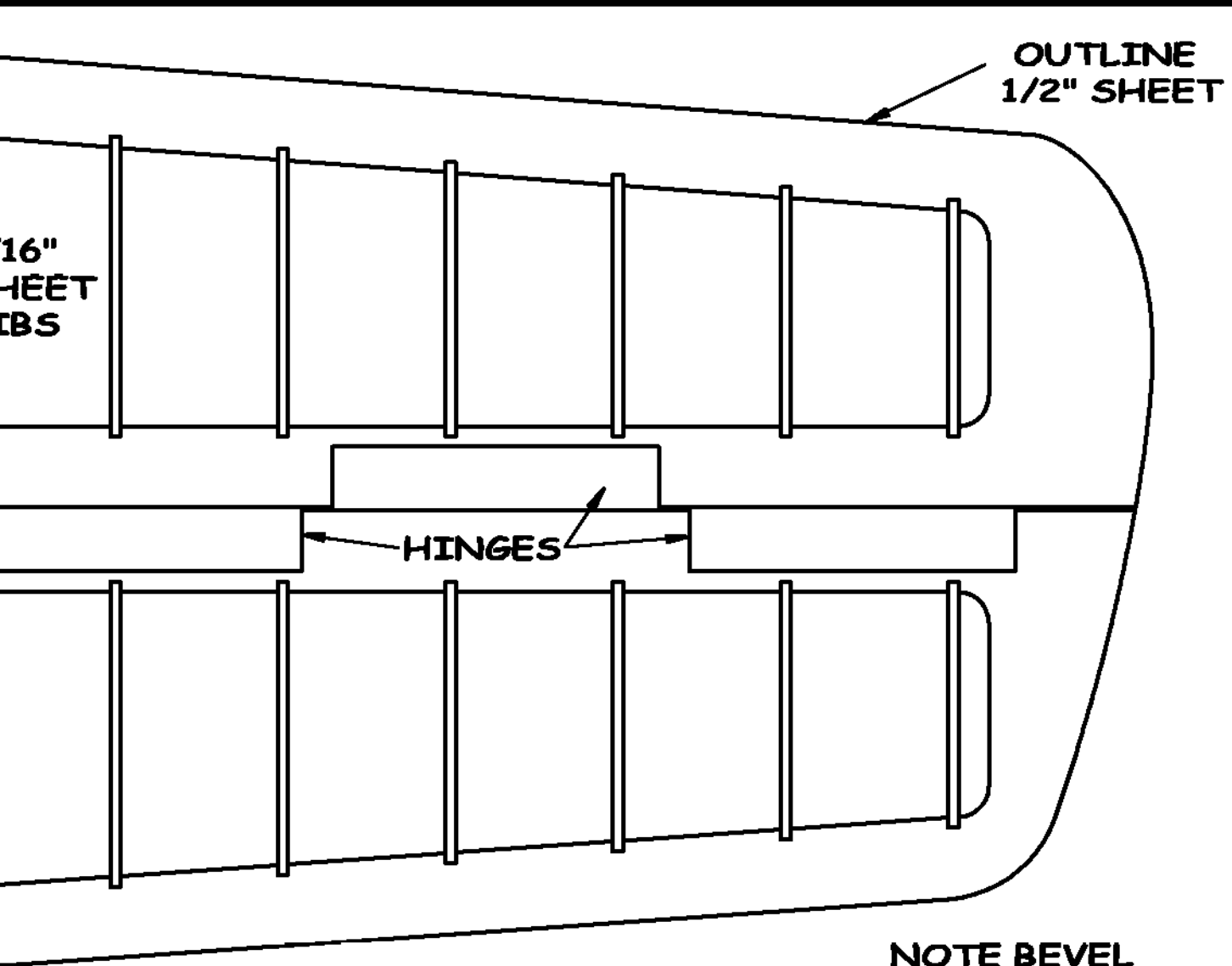
TIP  
BRACES  
1/16"



1/8" MU  
WIRE

FIREWALL

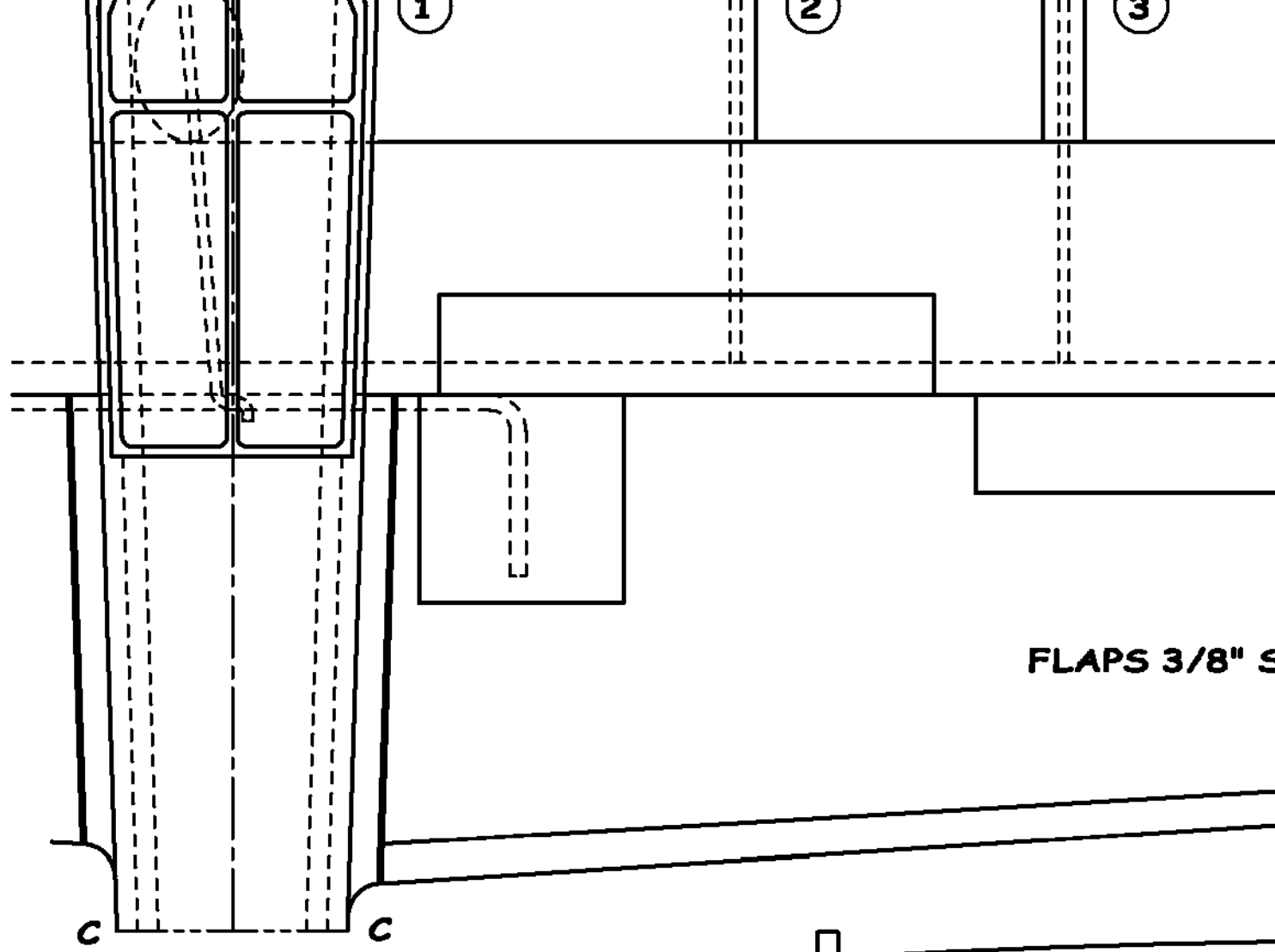
1/8" PLYWOOD



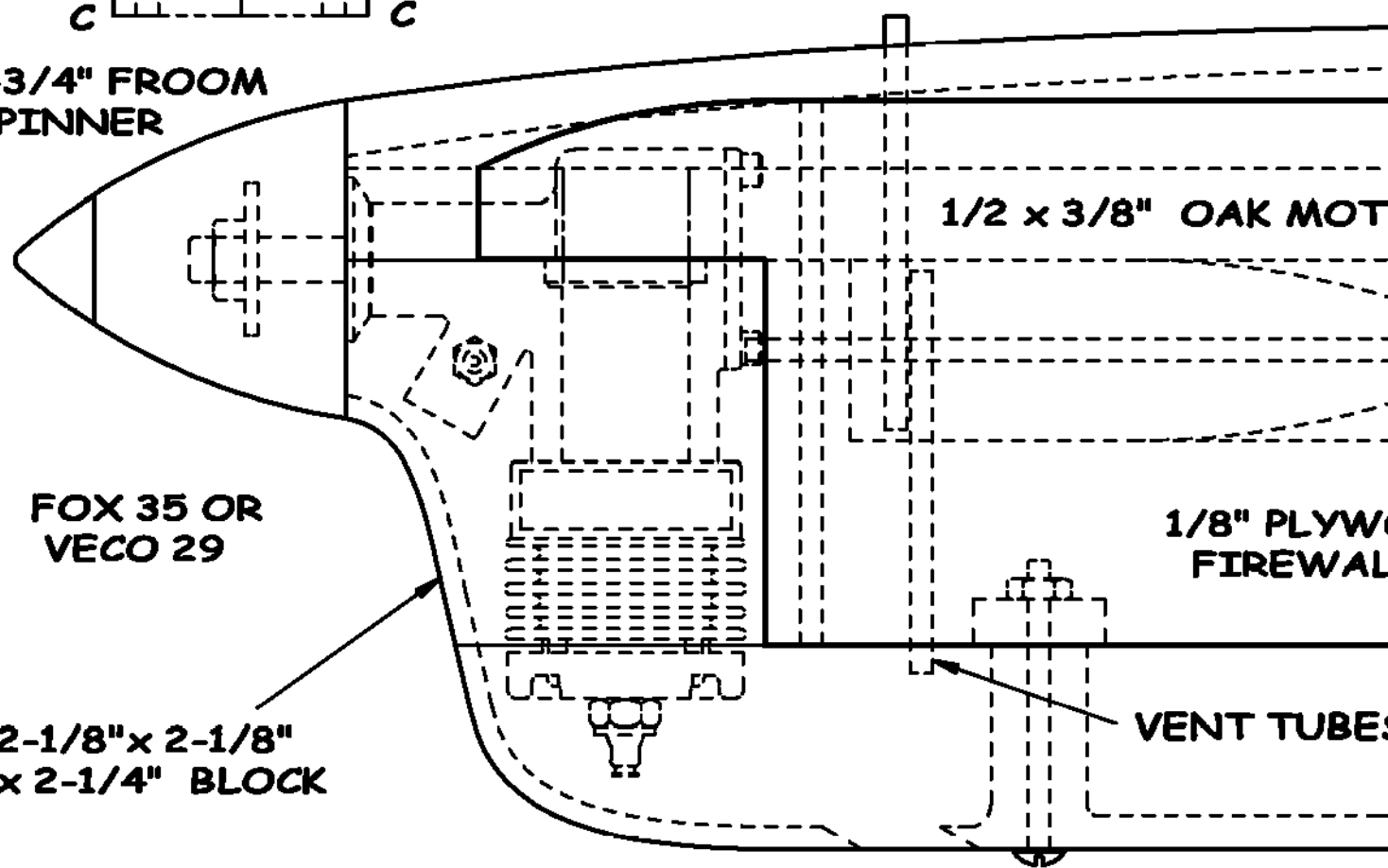
1

2

3



1-3/4" FROM SPINNER



④  
3/32" SHEET  
TRAILING  
EDGE

⑤  
SPLICE  
(36" STK.)

⑥  
⑦  
3/16" x 1/8" INSERT

SHEET

LEFT

1/16" Ø WIRE CABIN FRA

OR MOUNTS

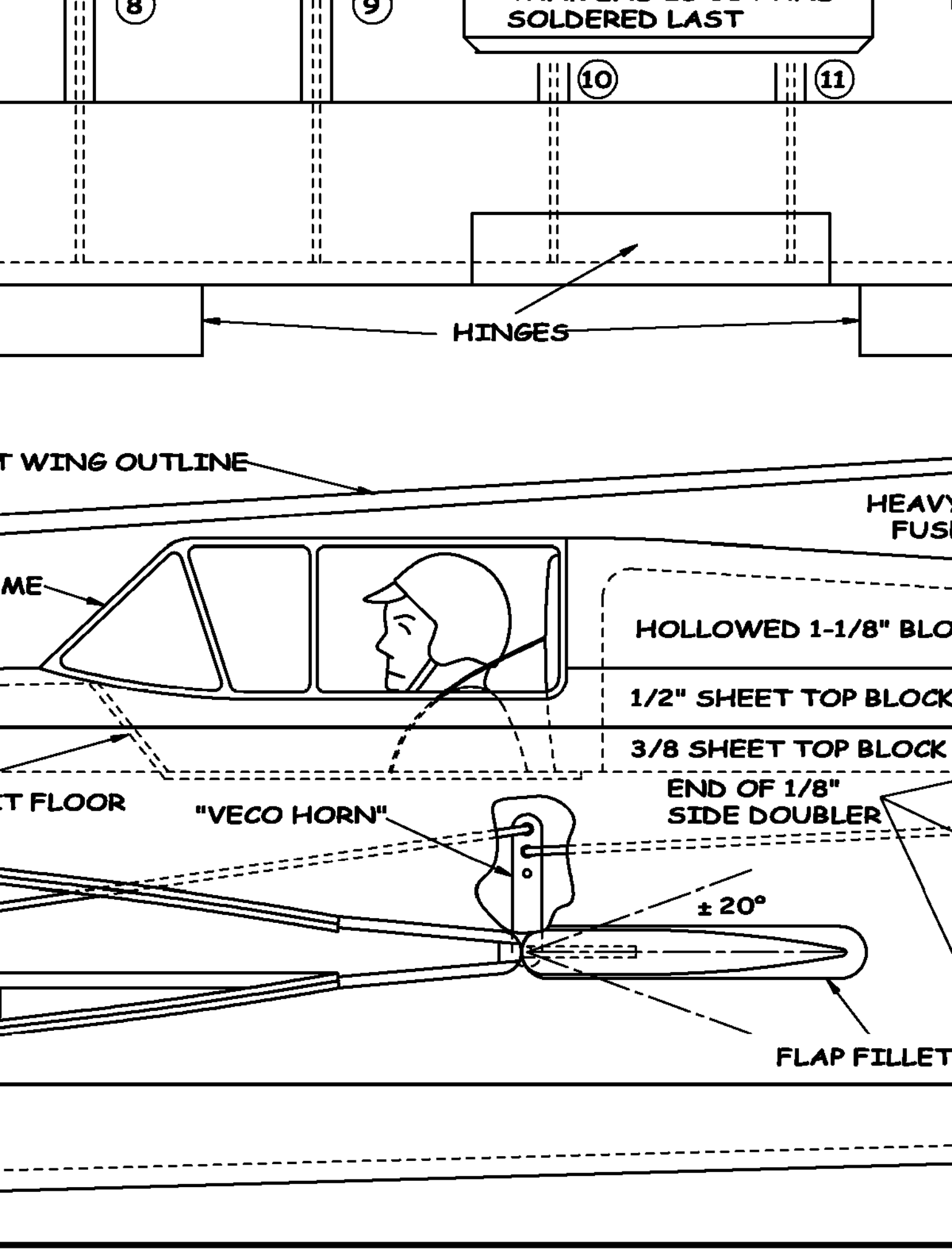
1/16" SHEET COCKPI

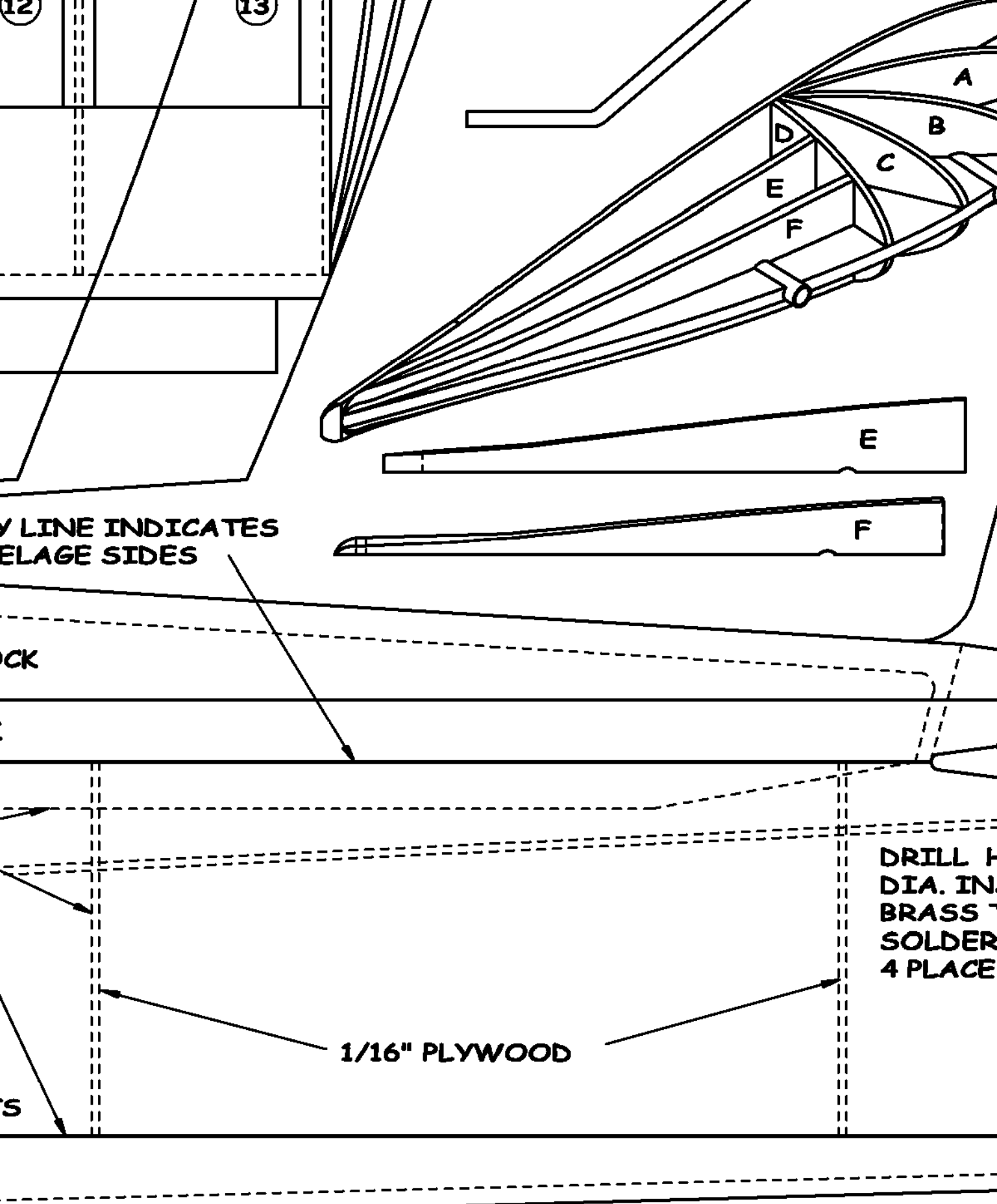
TANK

CENTER RIB  
ONLY

OOD  
LS

S  
1-1/8" x 2-1/4" BLOCK





DASHED LINE INDICATES  
WING ATTACHMENT SIDES

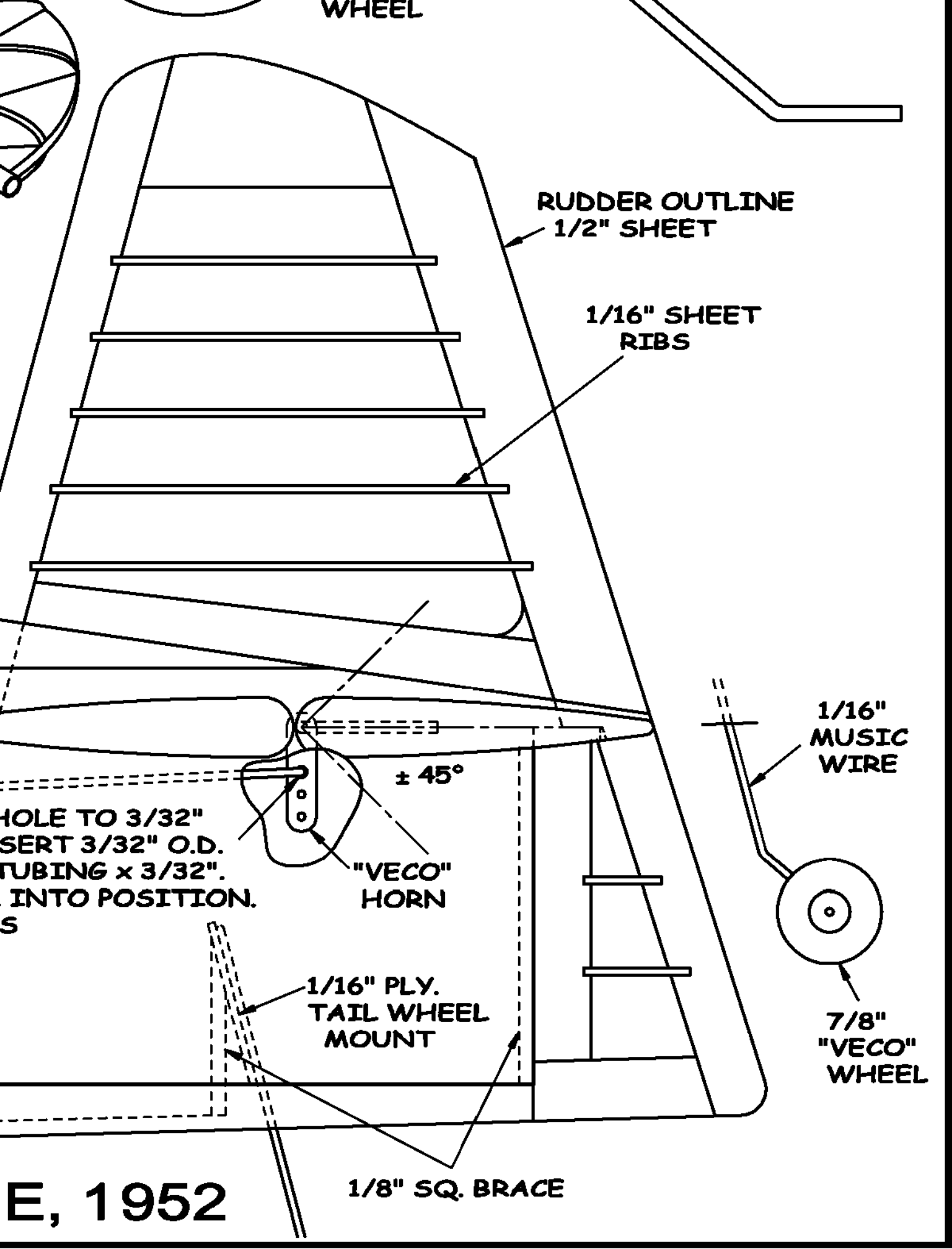
WING

DRILL 4 HOLES  
1/8" DIA. IN  
BRASS SOLDER  
4 PLACES

1/16" PLYWOOD

WING

WHEEL



RUDDER OUTLINE  
1/2" SHEET

1/16" SHEET  
RIBS

1/16"  
MUSIC  
WIRE

7/8"  
"VECO"  
WHEEL

$\pm 45^\circ$

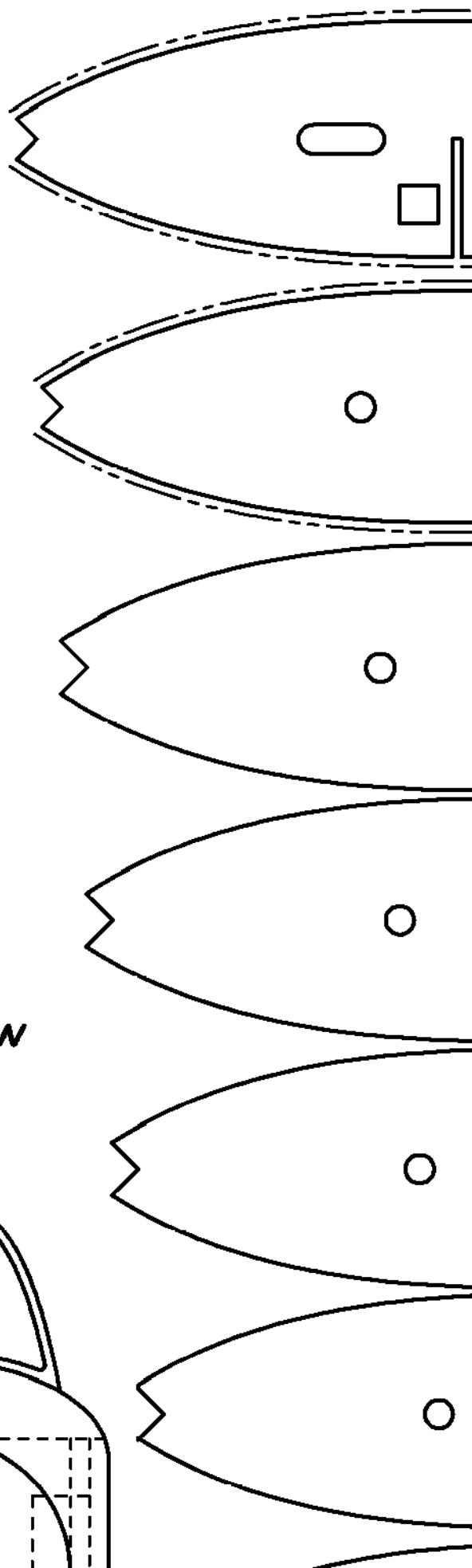
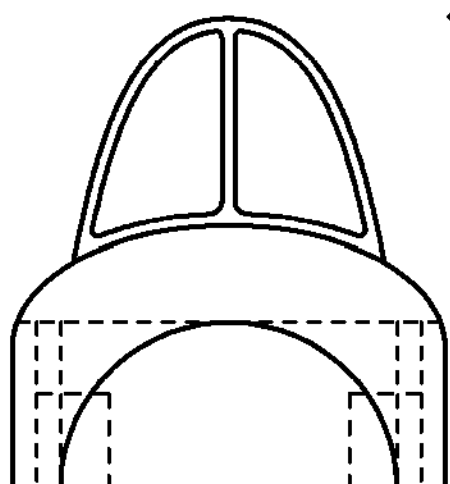
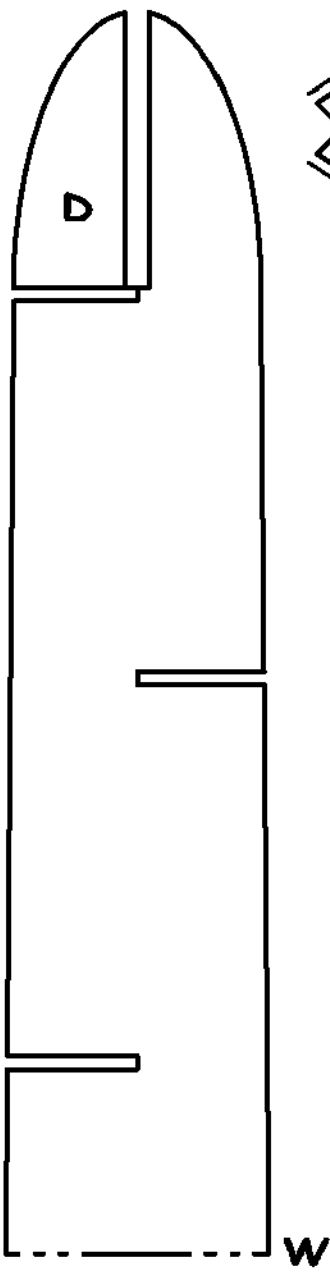
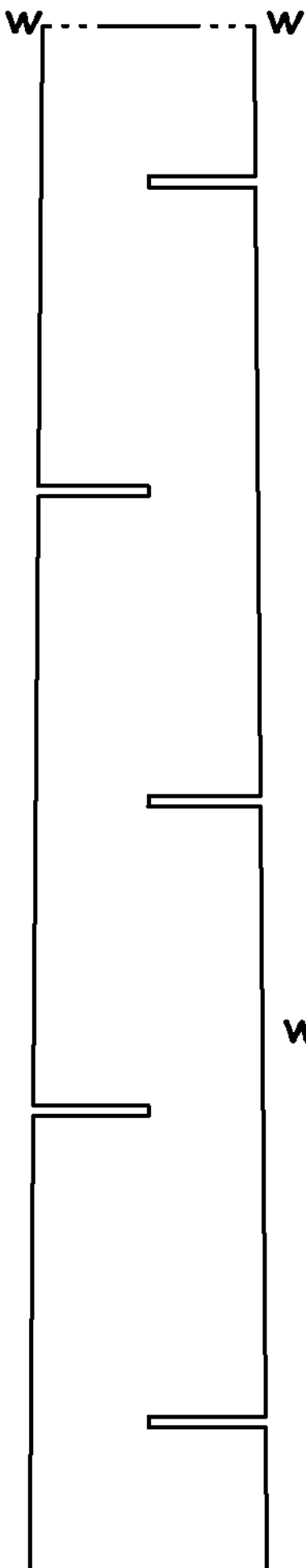
"VECO"  
HORN

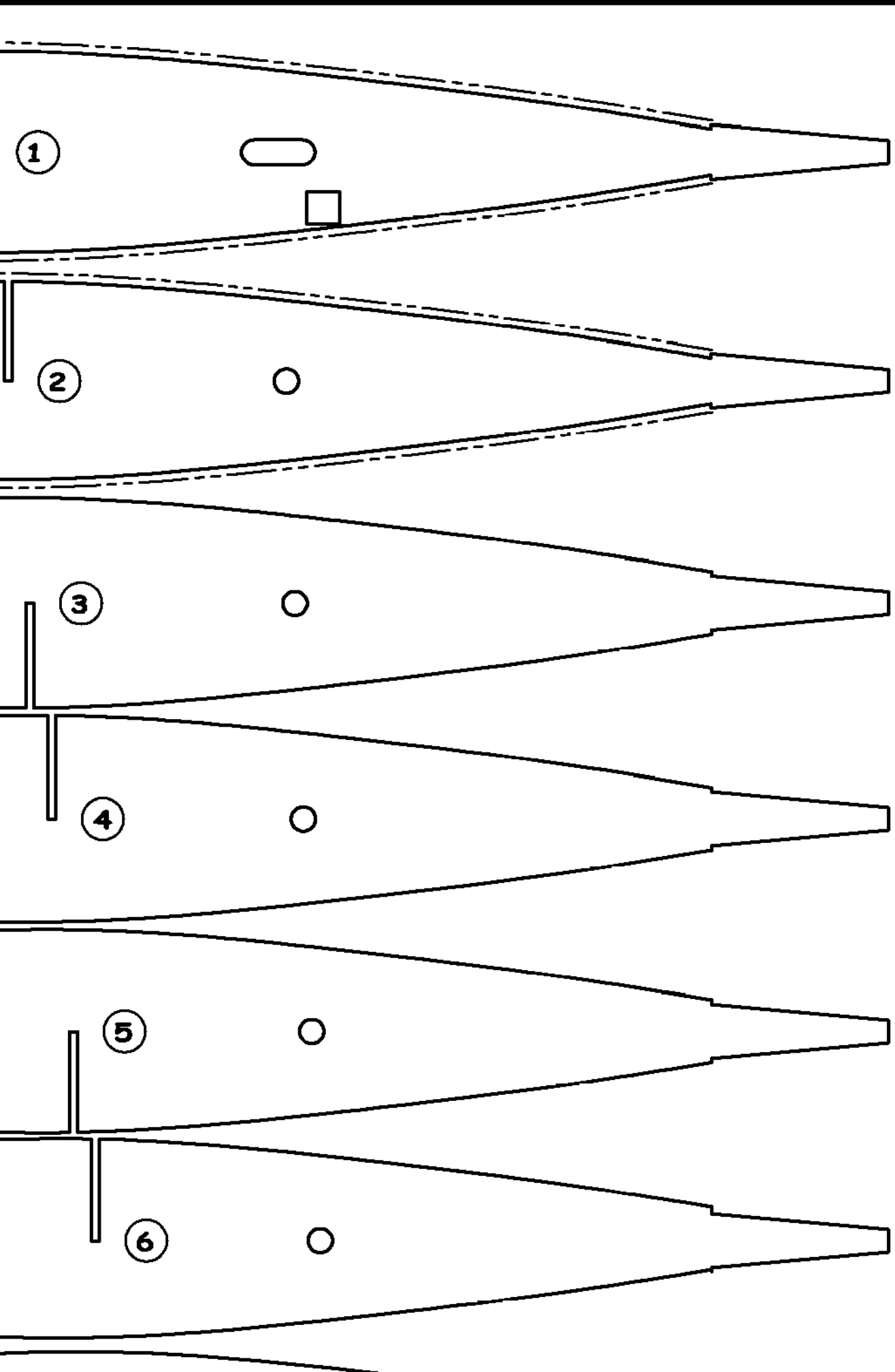
1/16" PLY.  
TAIL WHEEL  
MOUNT

1/8" SQ. BRACE

HOLE TO 3/32"  
INSERT 3/32" O.D.  
TUBING x 3/32".  
INTO POSITION.

E, 1952



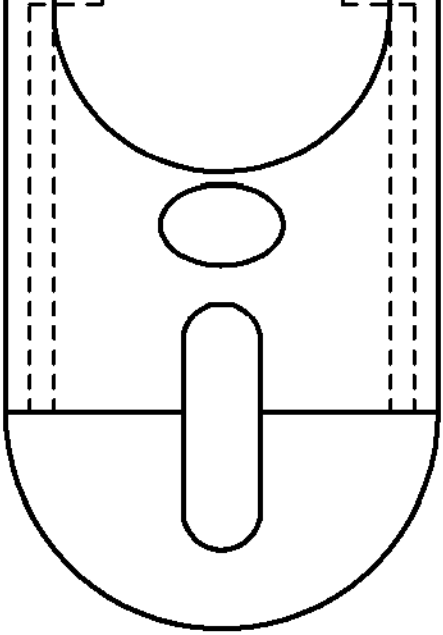


TOP

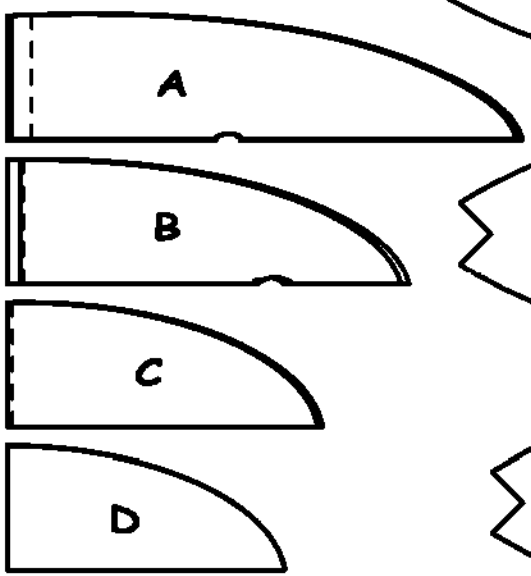
D-TUBE SPAR,  
1/16" HARD SHEET

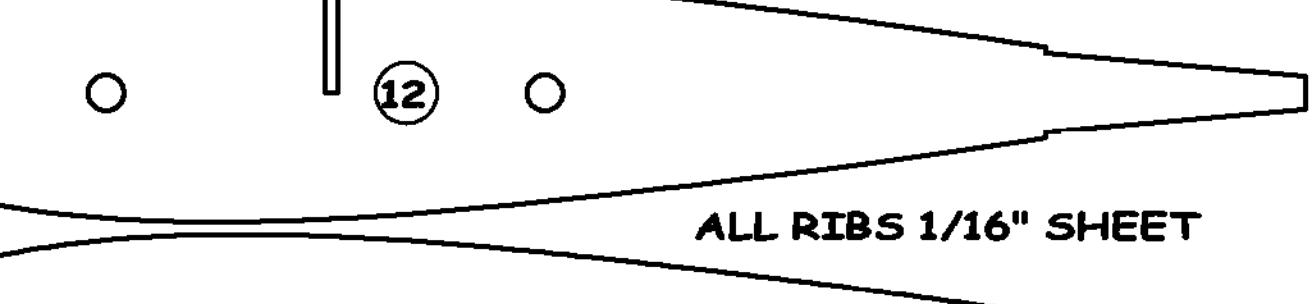
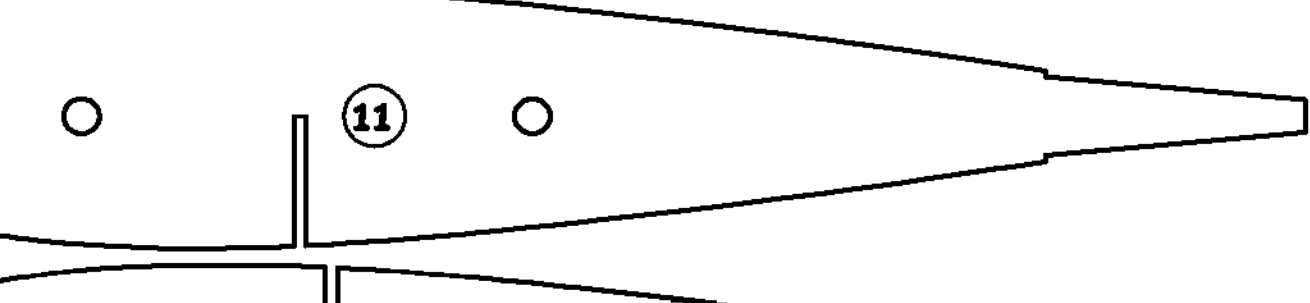
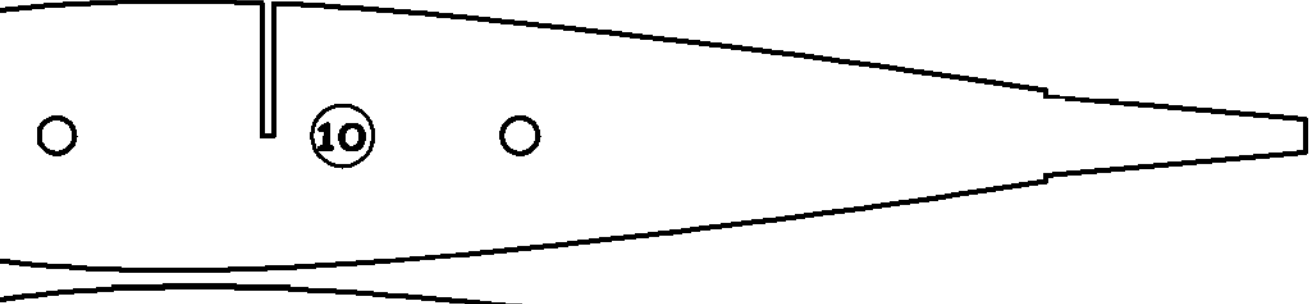
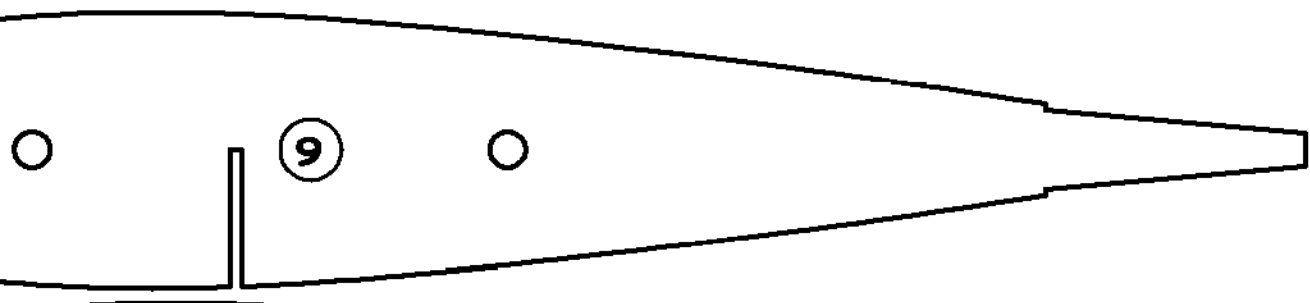
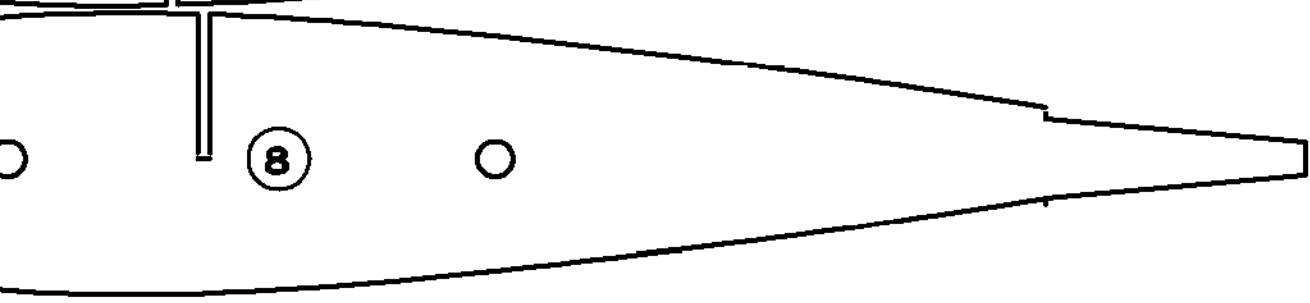
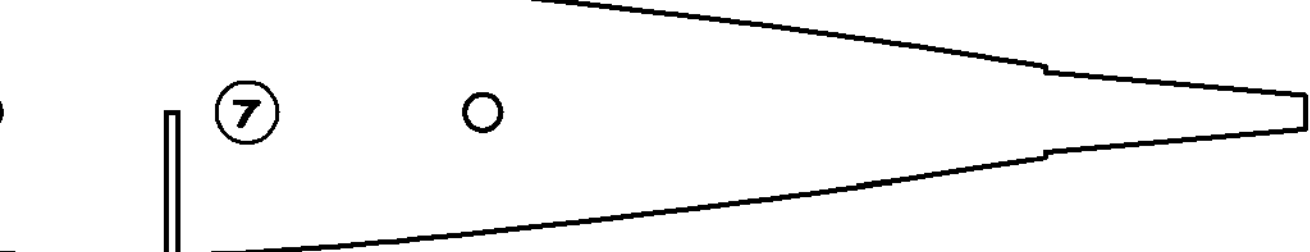
FORMER 1/16"  
PLYWOOD

FORMER 1/16"  
PLYWOOD



FRONT VIEW





**ALL RIBS 1/16" SHEET**