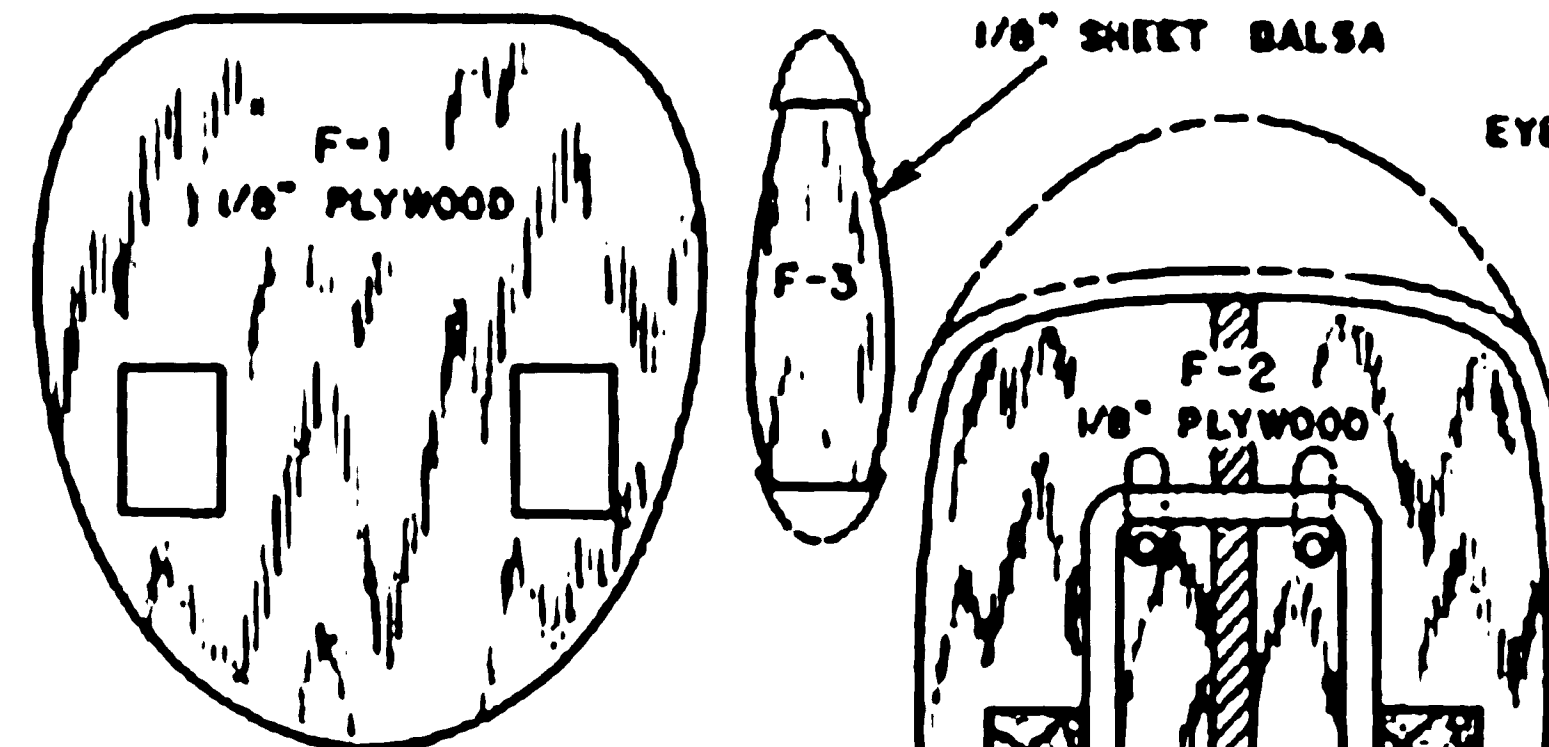


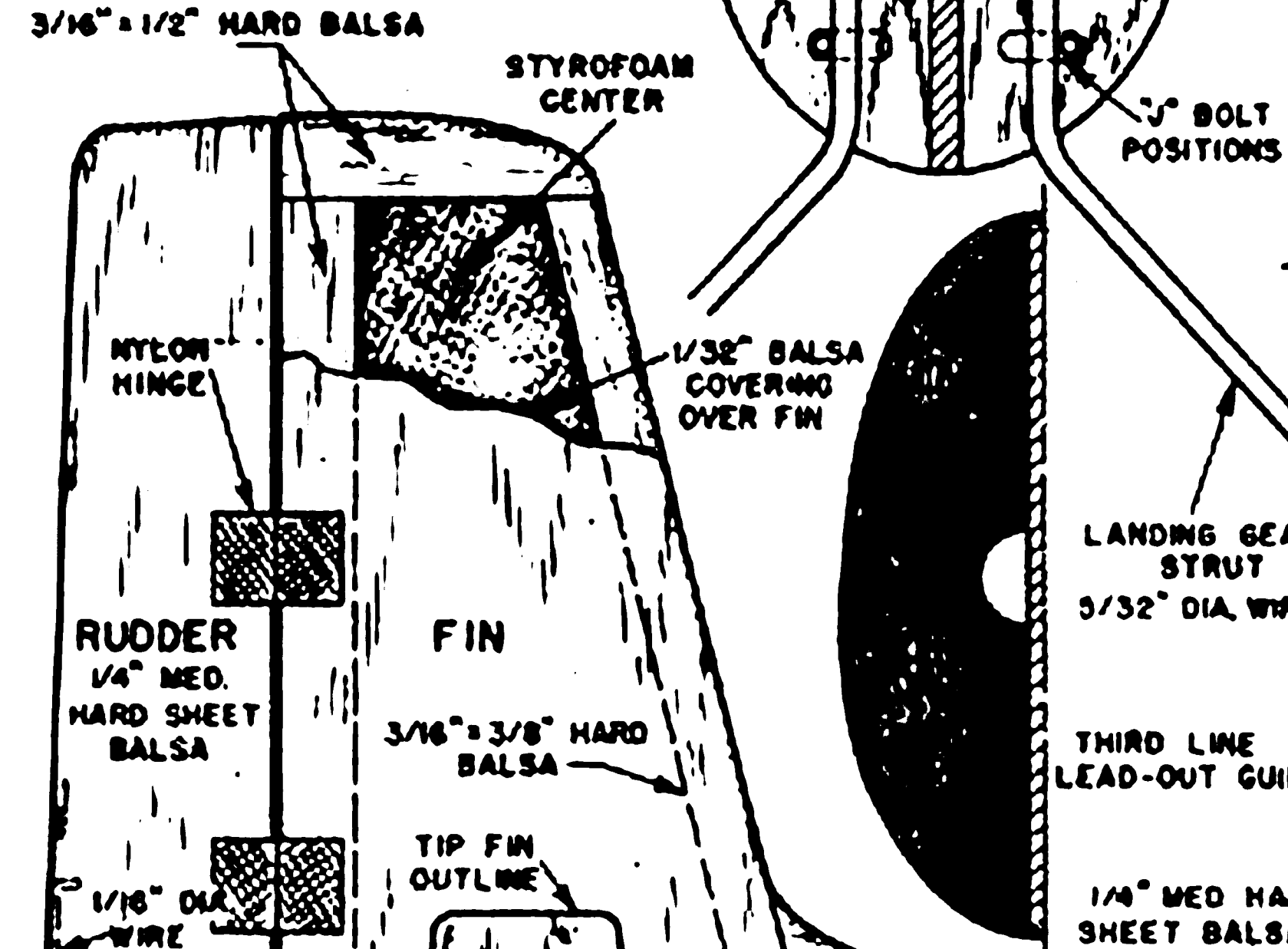
SCALE IN INCHES



NOTE: ADD TWO OUNCES OF BALLAST TO OUTBOARD WING TIP.

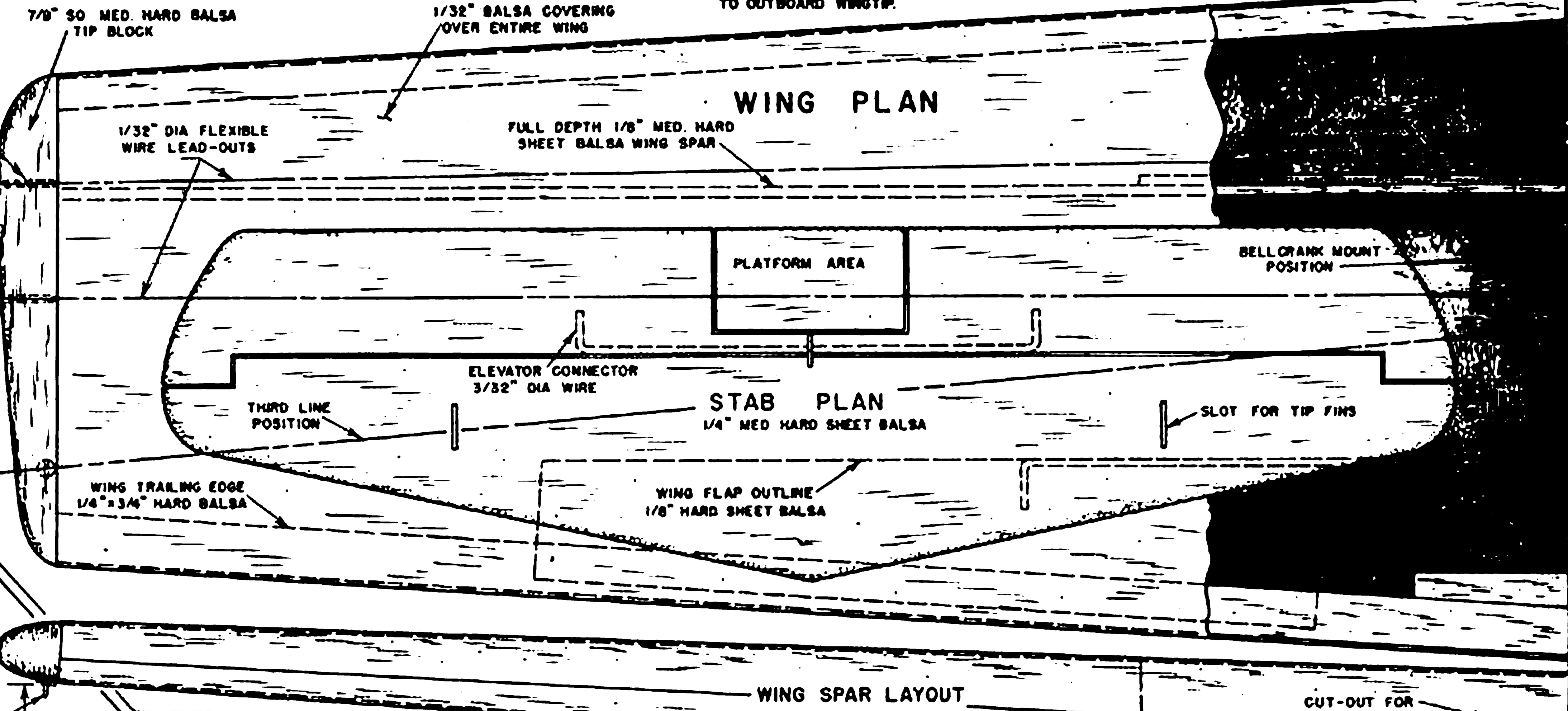


FUSELAGE BULKHEAD DETAILS



RUDDER

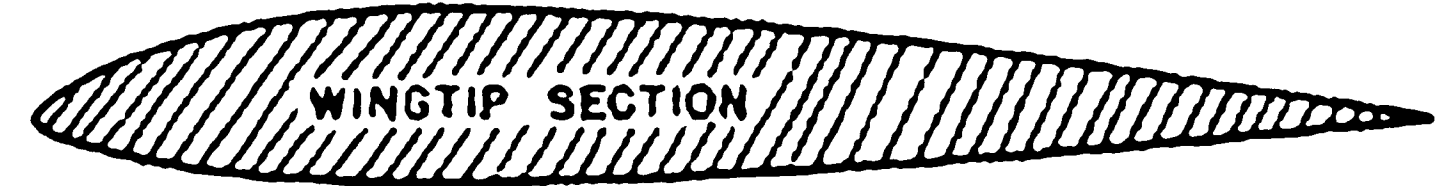
FIN



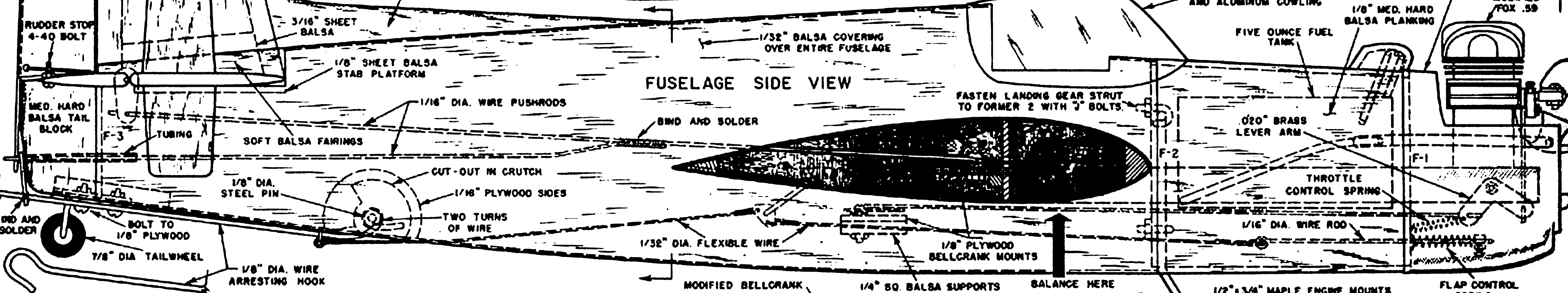
WING PLAN

STAB PLAN

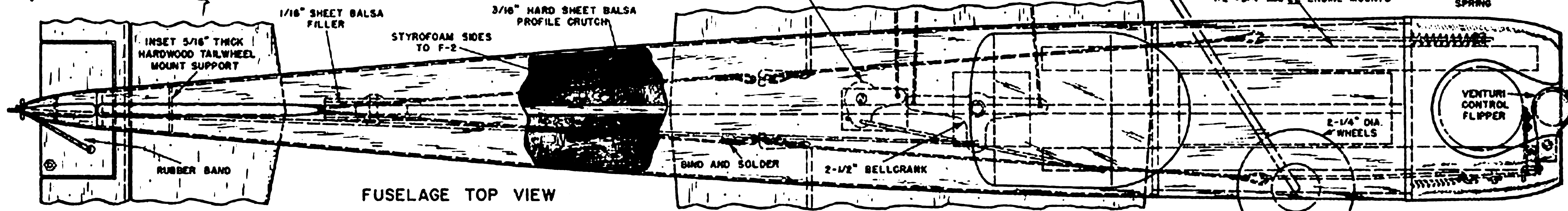
WING SPAR LAYOUT



WINGTIP SECTION



FUSELAGE SIDE VIEW



FUSELAGE TOP VIEW

VENTURI CONTROL FLIPPER

FLAP CONTROL SPRING

1/2" x 3/4" MAPLE ENGINE MOUNTS

1/4" 50 Balsa SUPPORTS

BALANCE HERE

MODIFIED BELLCRANK

2-1/2" BELLCRANK

BIND AND SOLDER

3/16" HARD SHEET Balsa PROFILE CRUTCH

STYROFOAM SIDES TO F-2

1/16" SHEET Balsa FILLER

INSET 3/16" THICK HARDWOOD TAILWHEEL MOUNT SUPPORT

RUBBER BAND

7/8" DIA. TAILWHEEL

1/8" DIA. WIRE ARRESTING HOOK

TWO TURNS OF WIRE

1/16" PLYWOOD SIDES

CUT-OUT IN CRUTCH

1/8" DIA. STEEL PIN

SOFT Balsa FAIRINGS

1/8" SHEET Balsa STAB PLATFORM

3/16" SHEET Balsa

1/4" MED. HARD SHEET Balsa

LANDING GEAR STRUT

3/32" DIA. WIRE

3" BOLT POSITIONS

STYROFOAM CENTER

1/32" Balsa COVERING OVER FIN

1/8" PLYWOOD

1/8" SHEET Balsa

7/8" 50 MED. HARD Balsa TIP BLOCK

1/32" Balsa COVERING OVER ENTIRE WING

1/32" DIA FLEXIBLE WIRE LEAD-OUTS

FULL DEPTH 1/8" MED. HARD SHEET Balsa WING SPAR

PLATFORM AREA

BELLCRANK MOUNT POSITION

THIRD LINE POSITION

ELEVATOR CONNECTOR 3/32" DIA WIRE

1/4" MED. HARD SHEET Balsa

SLOT FOR TIP FIN

WING TRAILING EDGE 1/4" x 3/4" HARD Balsa

WING FLAP OUTLINE 1/8" HARD SHEET Balsa

CUT-OUT FOR BELLCRANK ASSEMBLY

BERKELEY'S "GUARDIAN" CANOPY AND ALUMINUM COWLING

FIVE OUNCE FUEL TANK

1/8" MED. HARD Balsa PLANKING

MODIFIED FOX .59

1/32" Balsa COVERING OVER ENTIRE FUSELAGE

FASTEN LANDING GEAR STRUT TO FORMER 2 WITH 3" BOLTS

5/20" BRASS LEVER ARM

THROTTLE CONTROL SPRING

1/16" DIA. WIRE ROD

1/8" PLYWOOD BELLCRANK MOUNTS

1/32" DIA. FLEXIBLE WIRE

BOLT TO 1/8" PLYWOOD

1/8" DIA. WIRE ARRESTING HOOK