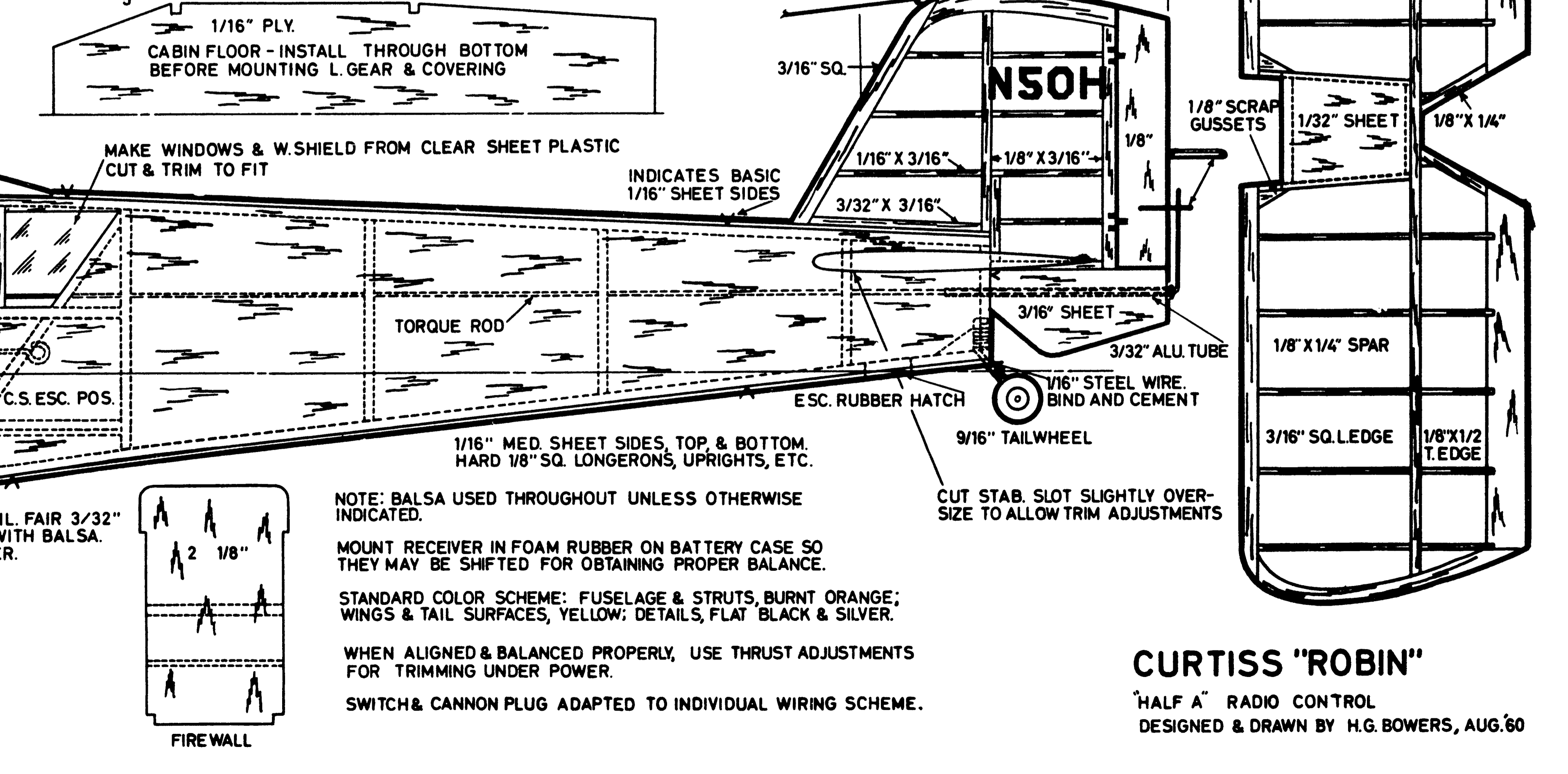
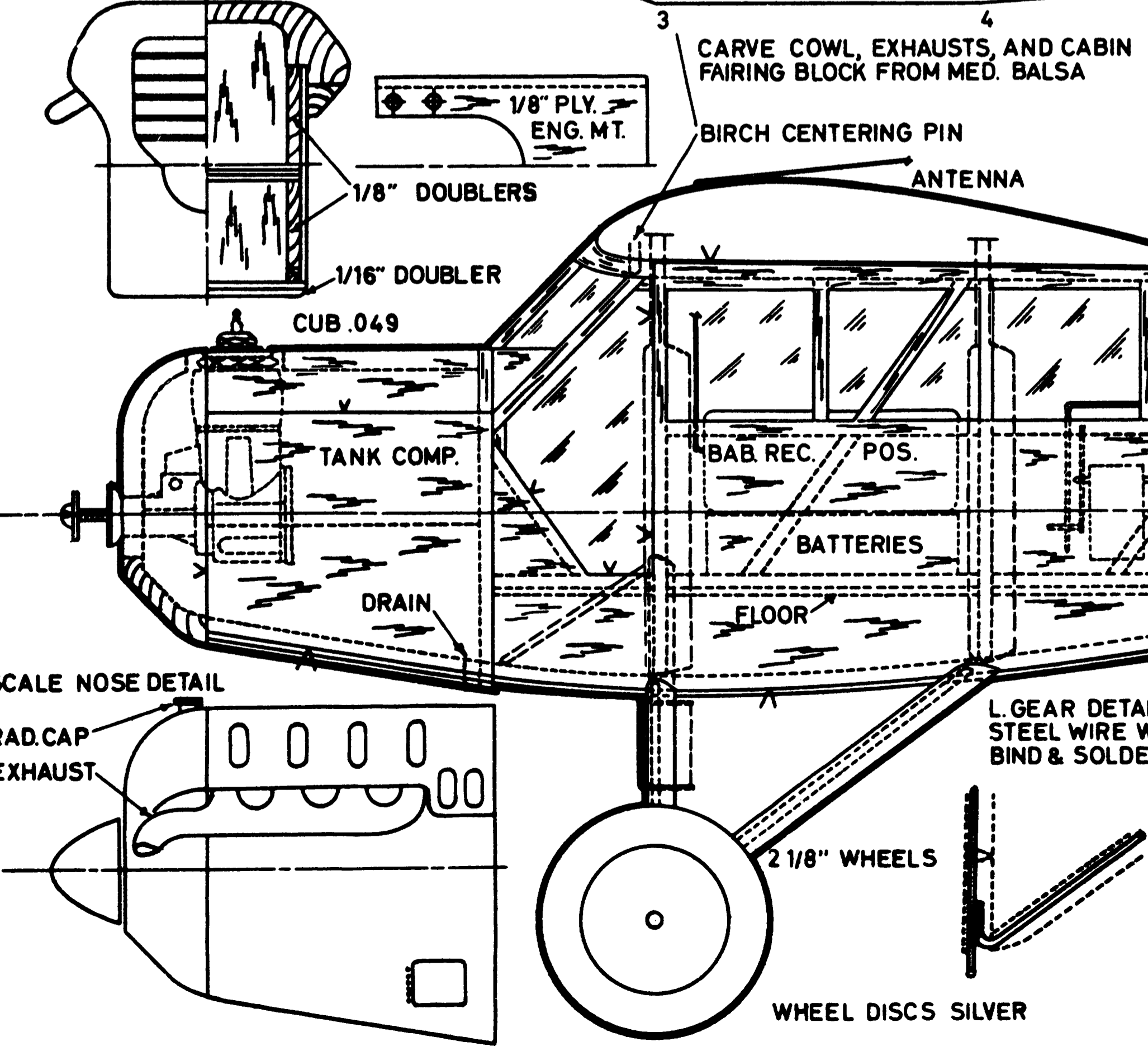
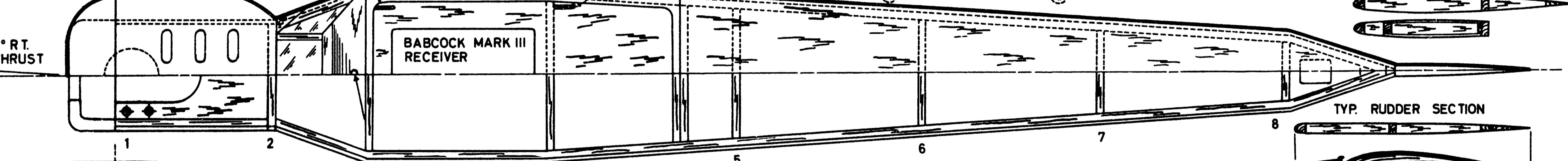


NOTE: THIS PLAN USED TO MAKE BOTH WING PANELS BY REVERSING TIP & STRUT MOUNT POINTS TO CORRECT RIB.



NOTE: BALSA USED THROUGHOUT UNLESS OTHERWISE INDICATED.

MOUNT RECEIVER IN FOAM RUBBER ON BATTERY CASE SO THEY MAY BE SHIFTED FOR OBTAINING PROPER BALANCE.

STANDARD COLOR SCHEME: FUSELAGE & STRUTS, BURNT ORANGE; WINGS & TAIL SURFACES, YELLOW; DETAILS, FLAT BLACK & SILVER.

WHEN ALIGNED & BALANCED PROPERLY, USE THRUST ADJUSTMENTS FOR TRIMMING UNDER POWER.

SWITCH & CANNON PLUG ADAPTED TO INDIVIDUAL WIRING SCHEME.

CURTISS "ROBIN"
 "HALF A" RADIO CONTROL
 DESIGNED & DRAWN BY H.G. BOWERS, AUG. '60