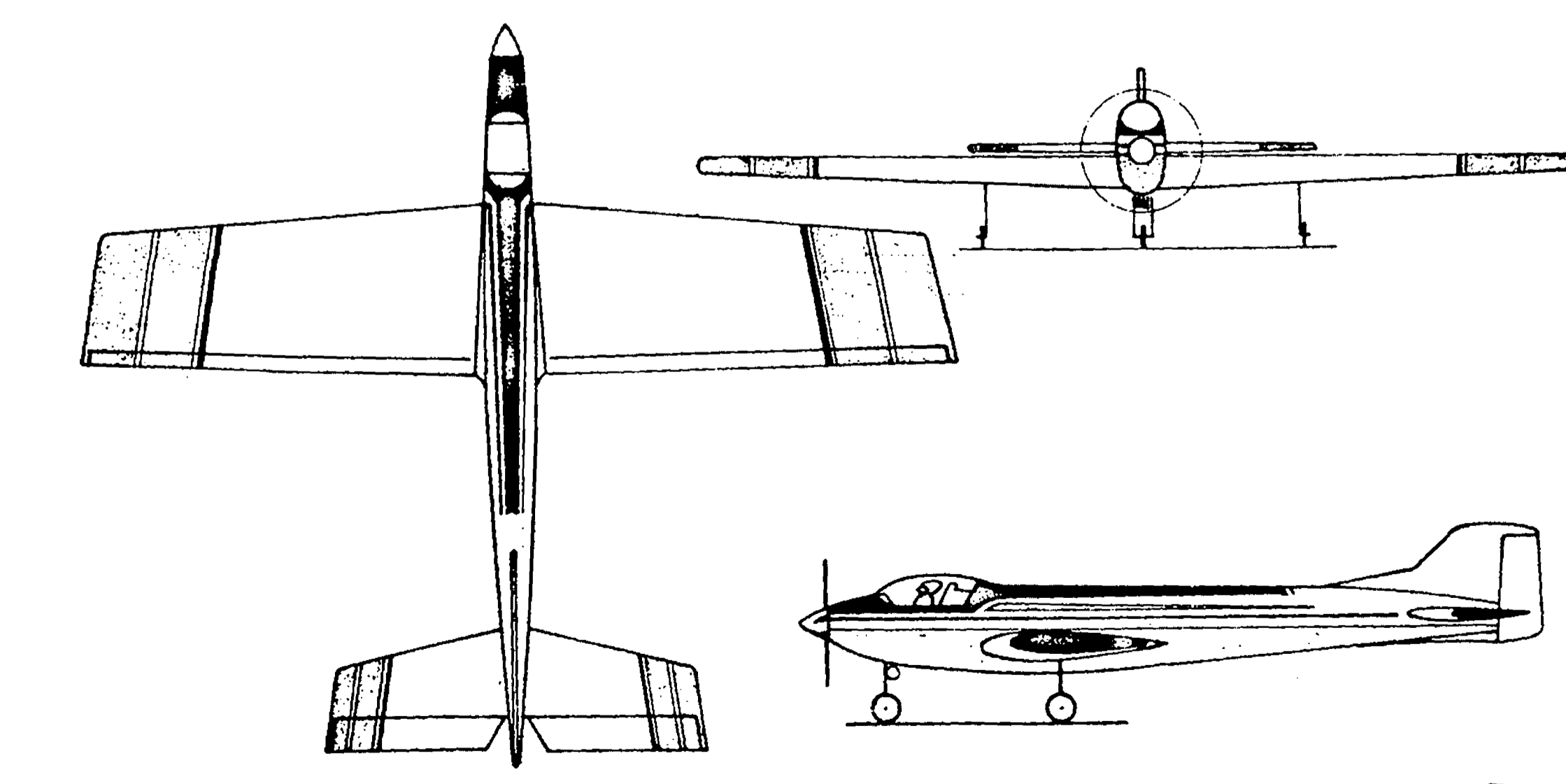
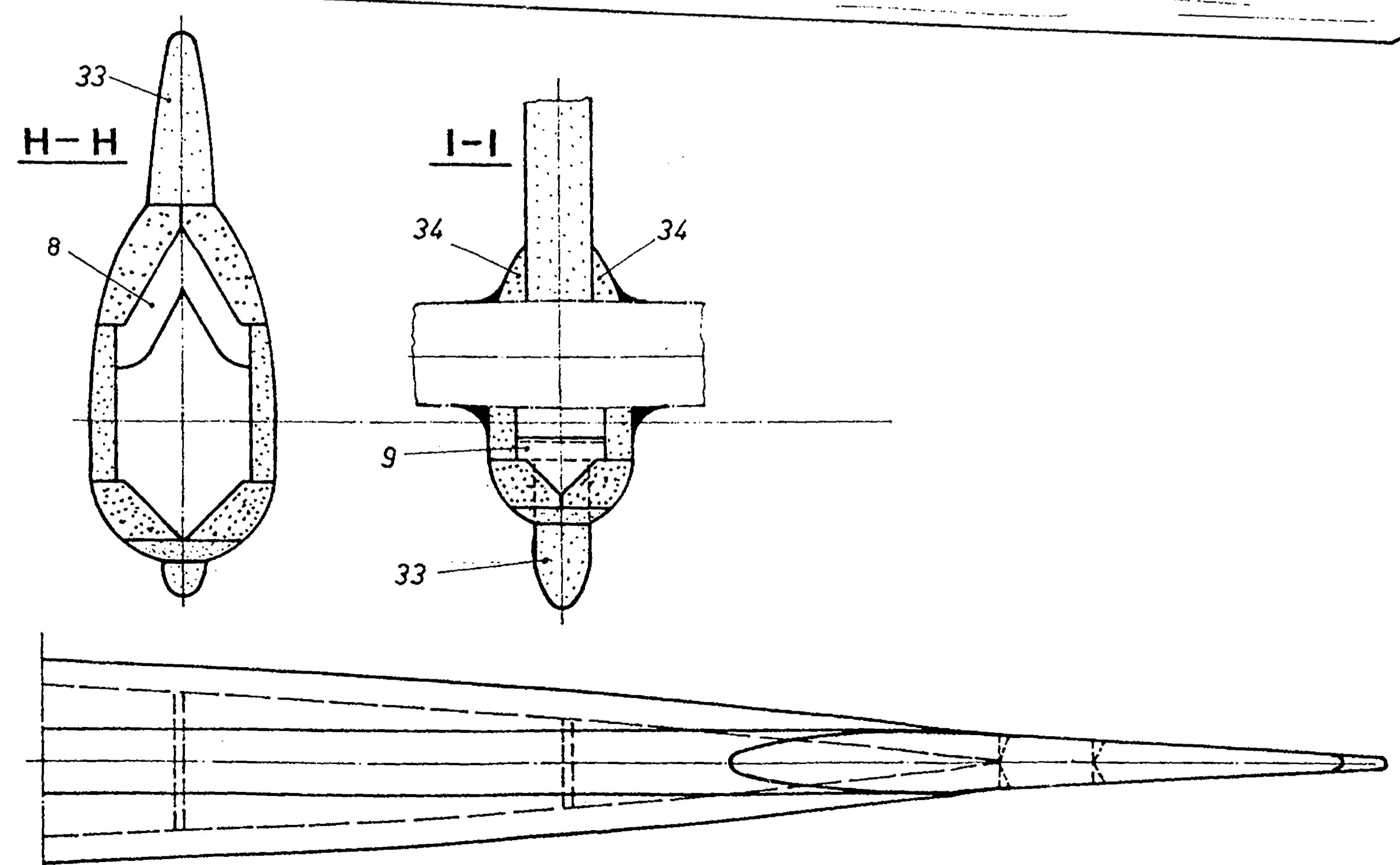
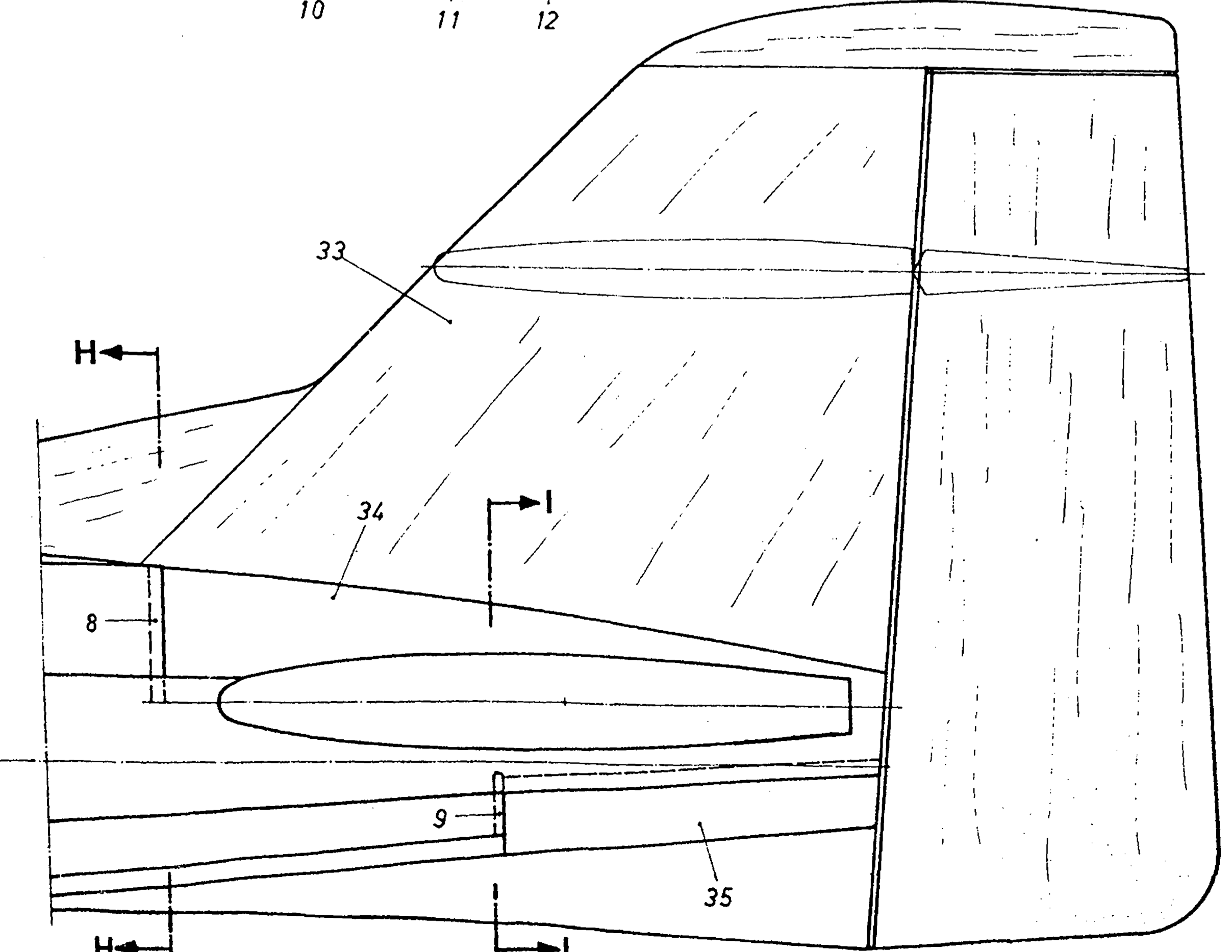
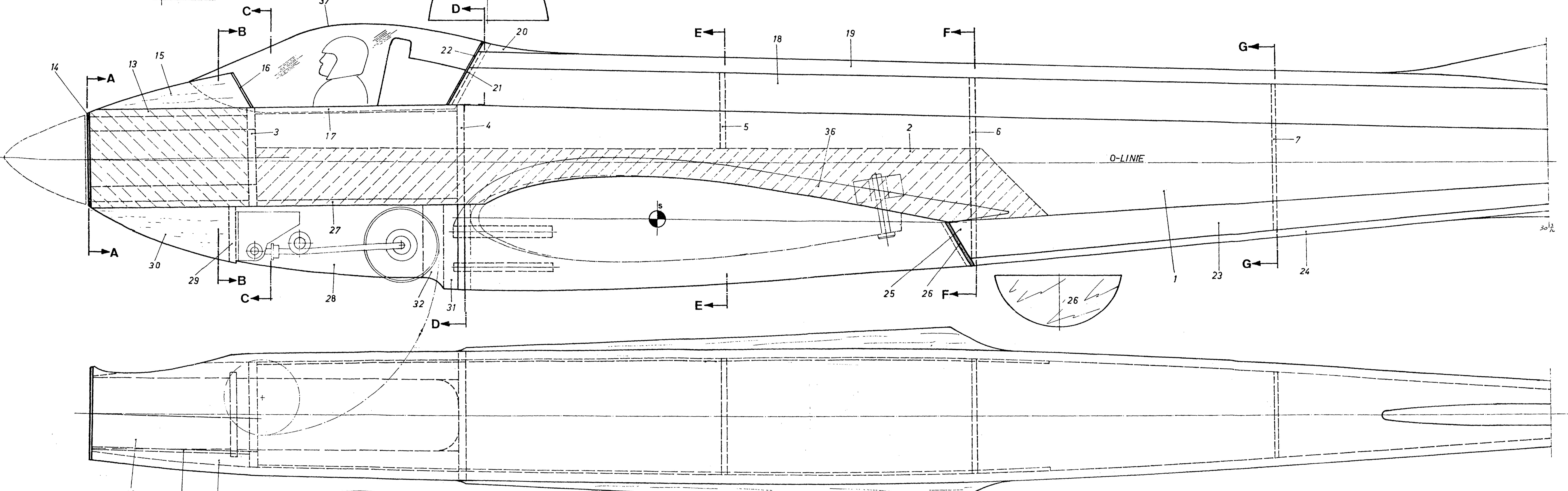


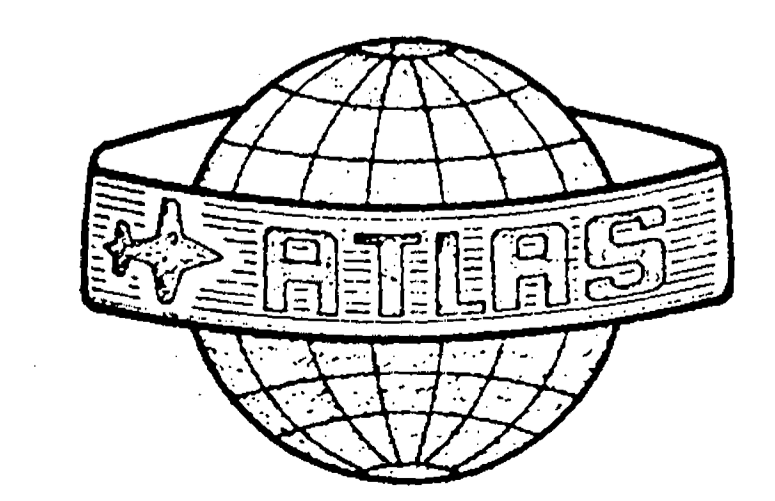
Fuselage, Fin and Rudder

Position	Material	Size
1	Balsa	1/4"
2	Plywood	1/16"
3	Plywood	1/4"
4	Plywood	1/4"
5	Plywood	1/8"
6	Plywood	1/8"
7	Plywood	1/8"
8	Plywood	3/32"
9	Plywood	3/32"
10	Plywood	1/16"
11	Maple	Block
12	Plywood	1/16"
13	Balsa	3/8"
14	Balsa	3/16"
15	Plywood	1/16"
16	Balsa	Block
17	Plywood	1/16"
18	Balsa	3/16"
19	Balsa	3/8"
20	Balsa	3/8"
21	Plywood	3/32"
22	Plywood	1/16"
23	Balsa	3/8"
24	Balsa	3/16"
25	Balsa	Block
26	Plywood	3/32"
27	Balsa	3/16"
28	Balsa	3/4"
29	Plywood	1/4"
30	Balsa	Block
31	Balsa	3/8"
32	Balsa	1/2 sq.
33	Balsa	5/16" Laminated to 5/8"
34	Balsa	Block
35	Balsa	Block
36	Balsa (or EpoxyLite)	Block
37	Butyrate Plastic	.040"



Technische Daten

Spannweite:	1650 mm
Rumpflänge:	1330 mm
Fluggewicht:	3500 g
Motor:	10 ccm
Fernsteuerung:	min. 4/8 Kanal

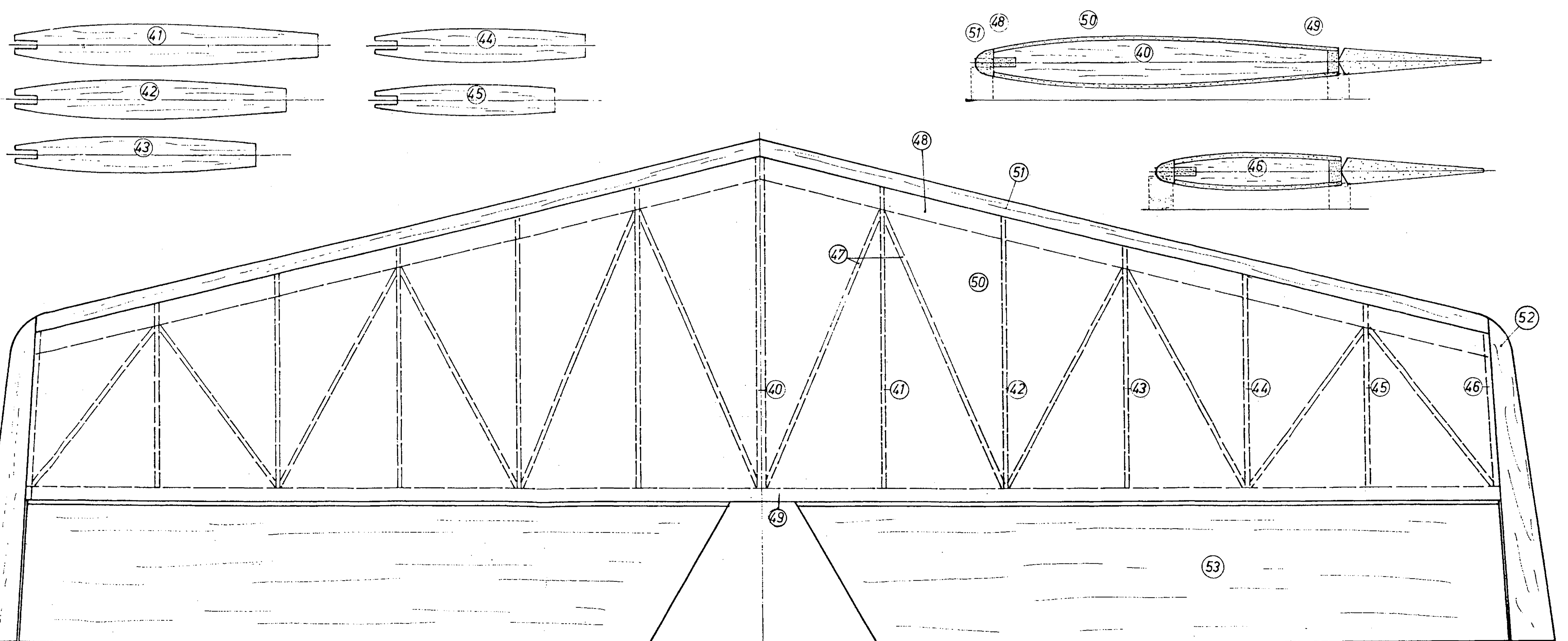
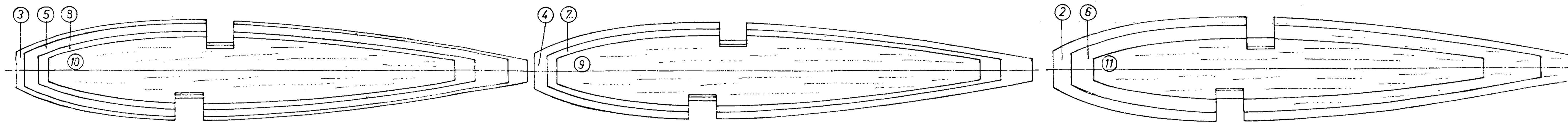
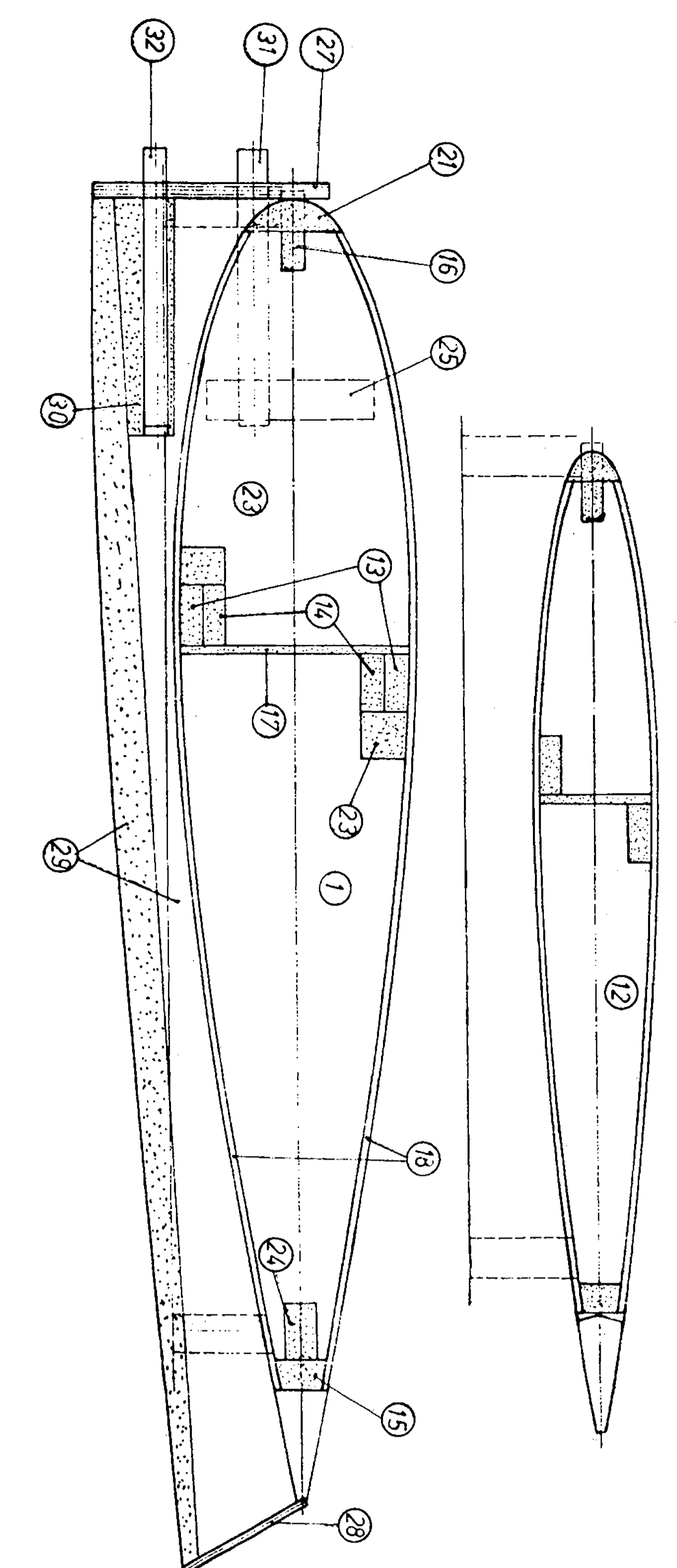
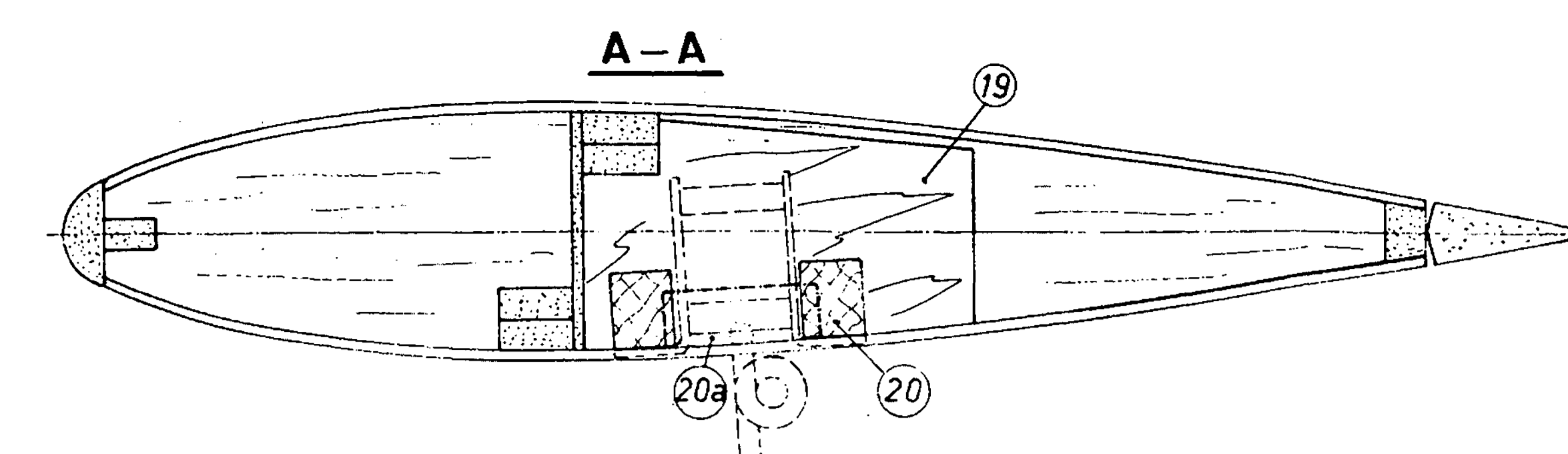
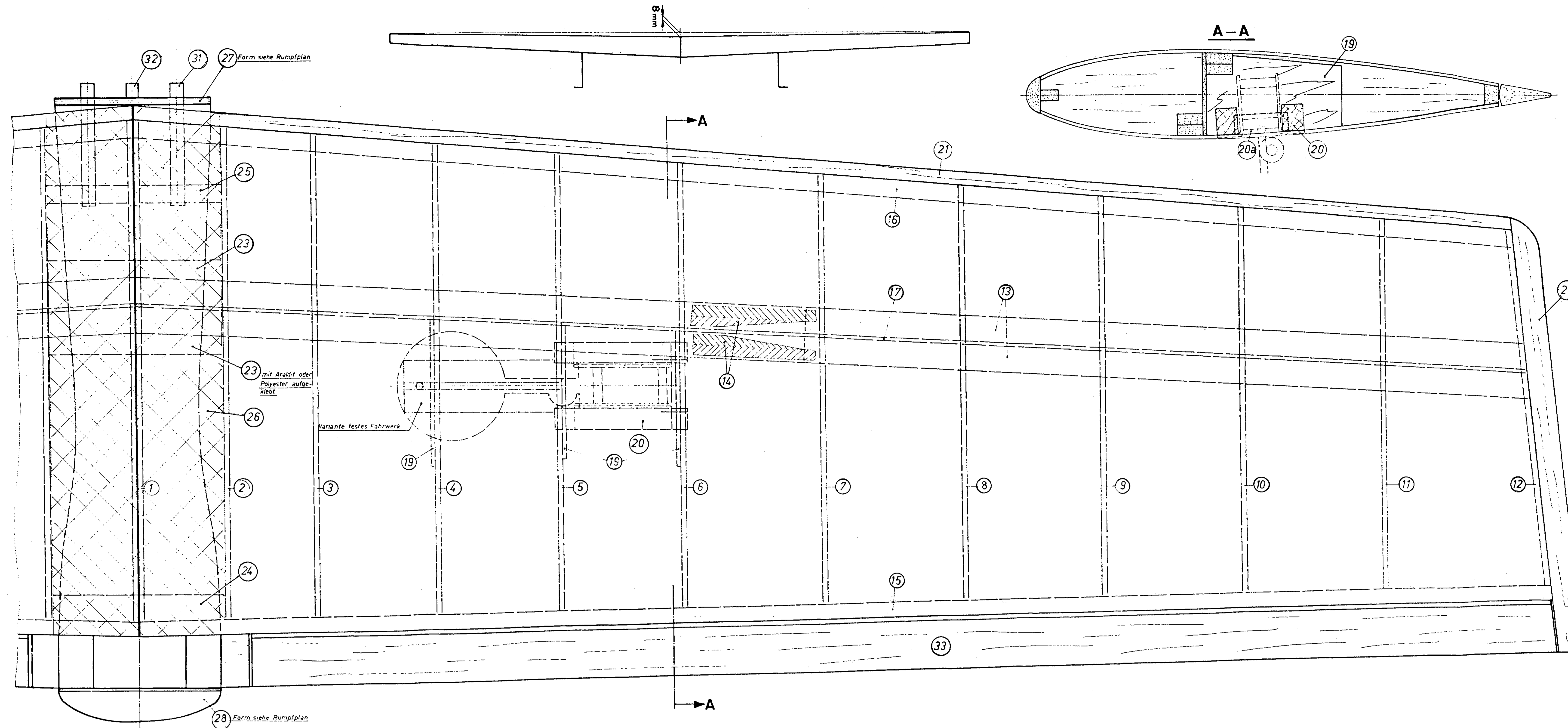


F 3A - MODELL

ATLAS

von Wolfgang Matt

Modellbau Günther Matt, Schaanerstr.112, FL-9494 Schö

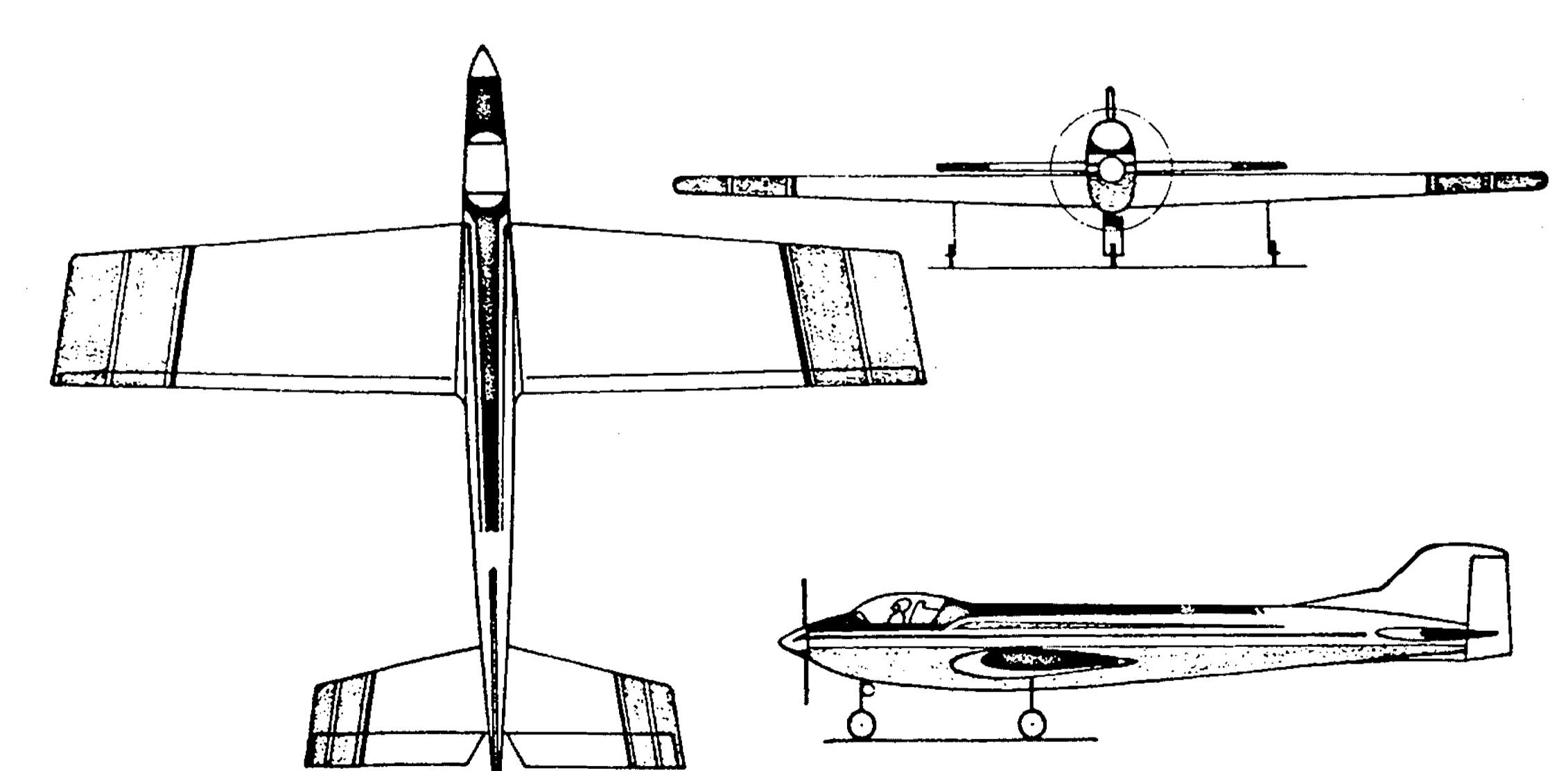


Wing

1-12	Balsa	1/8"
13	Balsa	1/4" X 1/2"
14	Balsa	1/4" X 1/2"
15	Balsa	5/16" X 1/2"
16	Balsa	1/4" X 3/4"
17	Balsa	3/32" (Grain Vertical)
18	Balsa	1/8"
19	Plywood	3/32"
20	Kaple	1/2 sq.
21	Balsa	5/16" X 1"
22	Balsa	Block
23	Balsa	1/2"
24	Balsa	5/16"
25	Balsa	3/8"
26	Fiberglass	2" wide
27	Plywood	3/16"
28	Plywood	1/16"
29	Balsa	3/8"
30	Block	Block
31	Brick Dowell	3/16" dia.
32	Brick Dowell	1/4" dia.
33	Balsa	1/2" X 1 3/16"

Horizontal Stabilizer

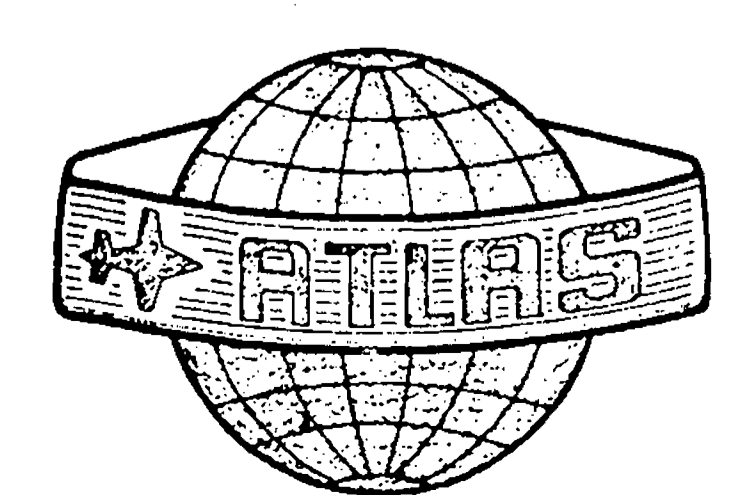
40-46	Balsa	3/32"
47	Balsa	3/32" X 3/8"
48	Balsa	3/16" X 5/8"
49	Balsa	1/4" X 3/8"
50	Balsa	1/16"
51	Balsa	5/16" X 1/2"
52	Balsa	Block
53	Balsa	1/2"



Tragfläche M 1:1

Technische Daten

Spannweite:	1650 mm
Rumpflänge:	1330 mm
Fluggewicht:	3500 g
Motor:	10 ccm
Fernsteuerung:	min. 4/8 Kanal



F3A - MODELL

ATLAS

von Wolfgang Matt