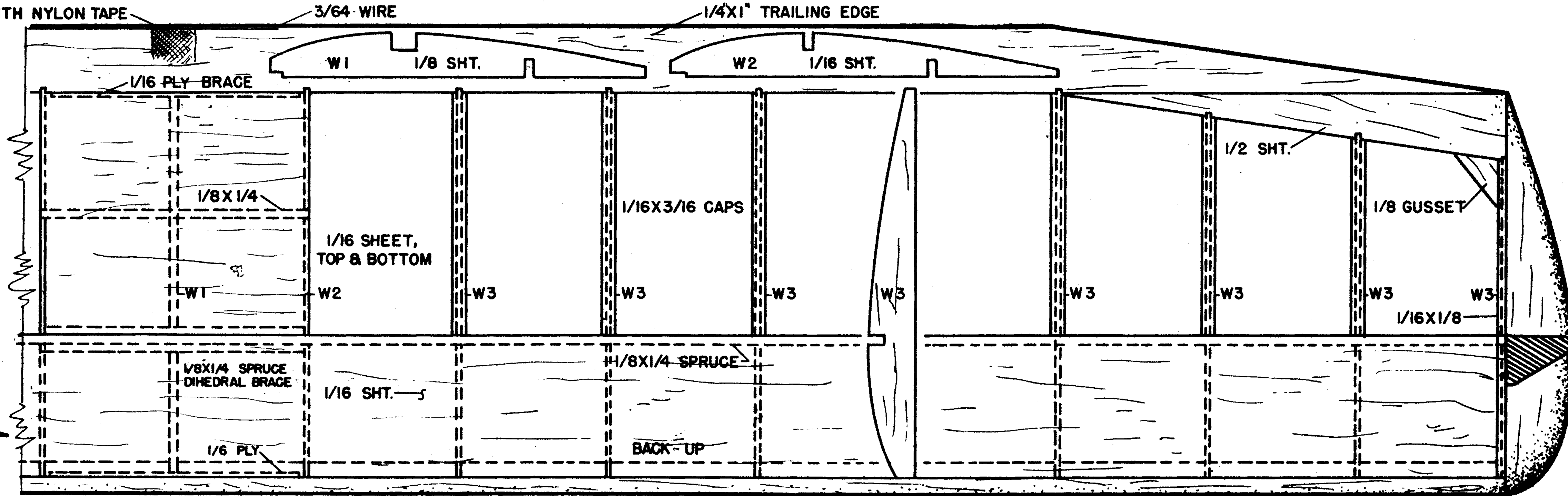
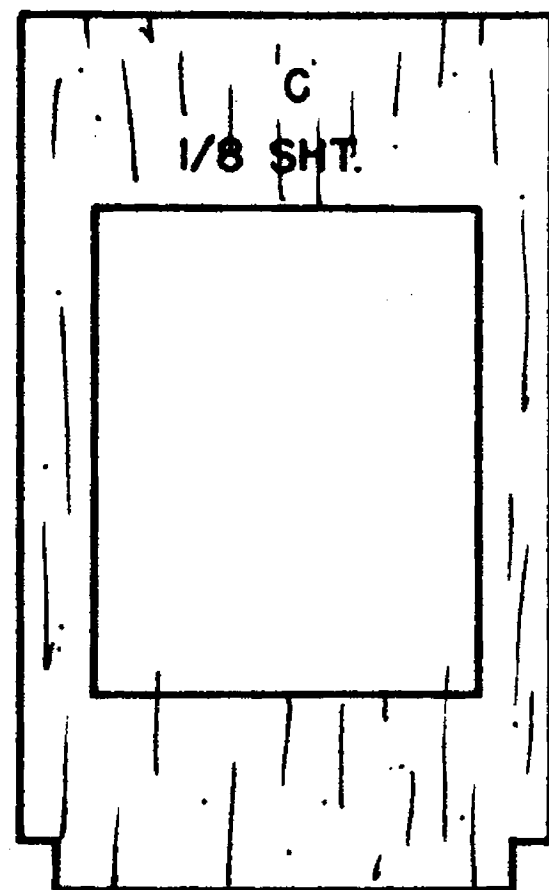
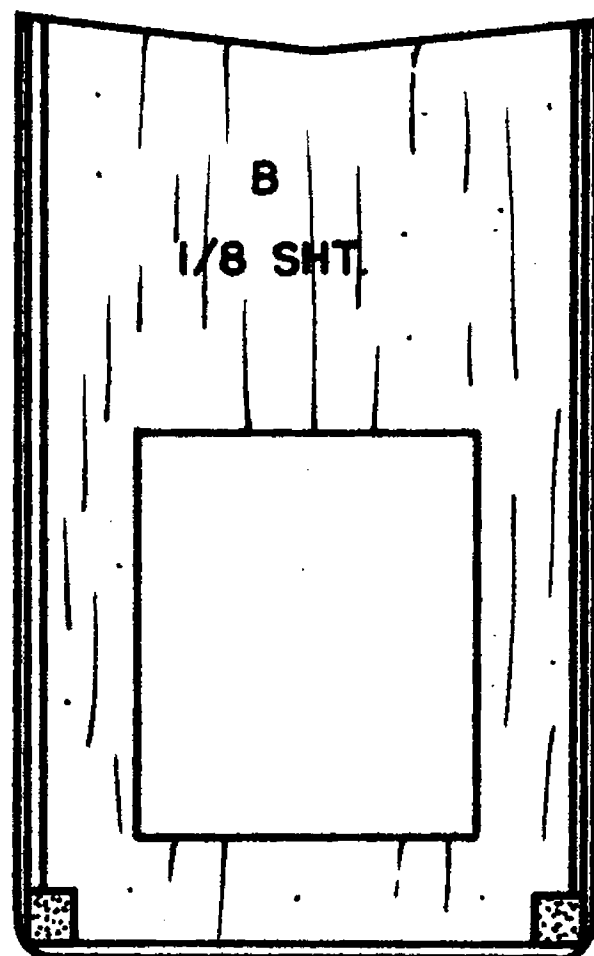


REINFORCE WITH NYLON TAPE

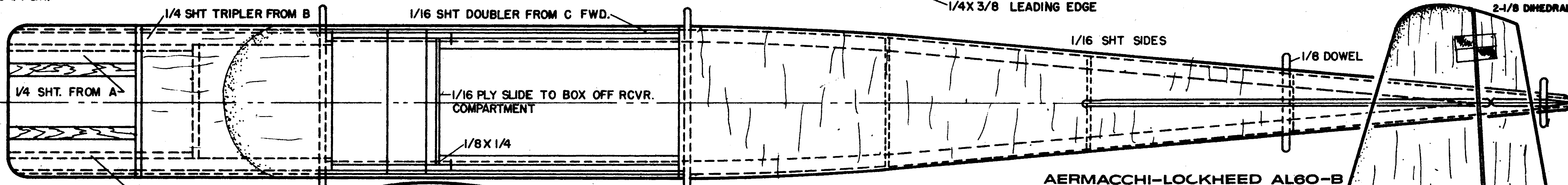
3/64 WIRE

1/4X1" TRAILING EDGE



1/4X3/8 HARDWOOD MOTOR BEARERS CE-  
MENTED TO 1/4 SHT.

TYPICAL WING RIB - TRIM TIP RIBS TO ANGLES  
SHOWN AFTER ASSEMBLY TO PRODUCE NEGATIVE  
ANGLE OF ATTACK



MOUNT ENGINE ON 3/32  
PLY KNOCK-OFF PLATE  
WITH 2 DEGREES RIGHT  
THRUST SECURE WITH  
3-48 SCREWS & BLIND  
NUTS UNDER MOTOR  
BEARERS

1/8 SHT. FROM FRONT OF  
BATTERY COMPARTMENT FWD.

SOLID MEDIUM  
BALSA BLOCK

BALANCE HERE

1/16 SHT. TOP - GRAIN CROSSWISE

AERMACCHI-LOCKHEED AL60-B  
"SANTA MARIA"

1/8 SHT.

1/4X1/4

MAKE FUEL TANK FROM OIO  
SHIM BRASS & 3/32 BRASS  
TUBING

BATTERY COMPART-  
MENT BOX IN WITH  
3/32 SHT. & LINE  
WITH FOAM RUBBER

RCVR.

1/4X3/8 HARD BALSA SERVO RAILS  
3/32 PLY.

WINDOW OUTLINE  
MAKE FROM  
"WONDERCAL"

1/16X3/16

1/16 DOUBLER

SOFT BLOCK FAIRING

HARD TAIL  
BLOCK

1/16 SHT. BOTTOM - GRAIN CROSSWISE

3/16 SHT. T.E. FOR 6 CHANNELS

1-1/2 DIA.

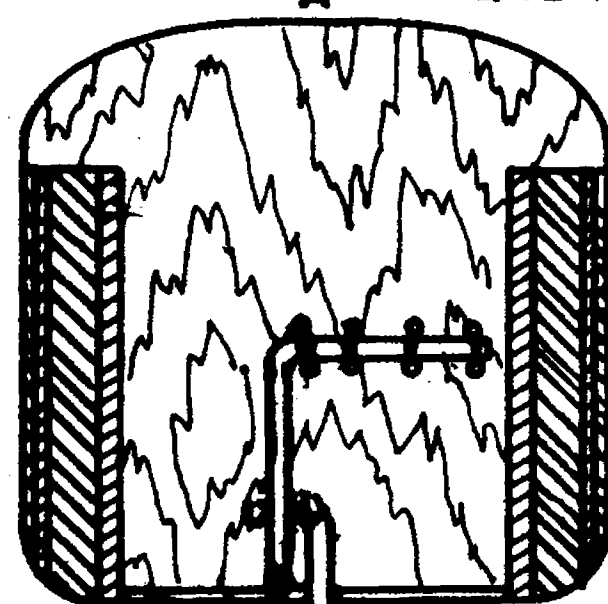


1-3/4 DIA.



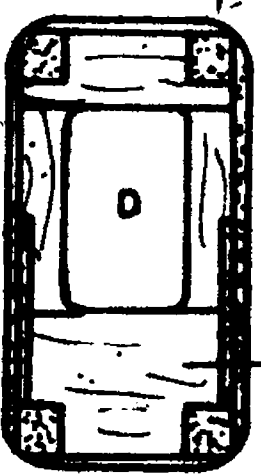
FRONT DIHEDRAL BRACE 1/16 PLY

REAR DIHEDRAL BRACE 1/16 PLY



3/32 SHEET - SAND TO TAPER  
INTO 1/16 SHEET AFT OF C

3/32 WIRE



1/16 REINF.

C TOP 3/32 SHT

